

Waste Water Disposal: Savage
 Drainage Area: Middle Potuxent
 Type of Buildings:
 No. of SHC: NA
 No. of WHC: NA
 No. of Lots: NA
WATER & SEWER CODE
 County Use:
 Water: E-27
 Sewer: NA

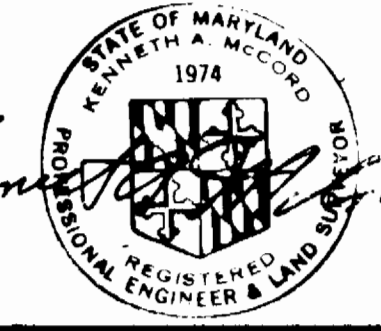
REVIEWED FOR HOWARD SOIL CONSERVATION DISTRICT AND MEETS TECHNICAL REQUIREMENT
James M. Nelson 12-6-83
 SIGNATURE DATE
 U.S. SOIL CONSERVATION SERVICE

This Development Plan is approved for Soil Erosion and Sediment Control by the Howard County Conservation District.
 APPROVED:
Howard S.C.D. 12-9-83
 HOWARD S.C.D. DATE

Sediment Control Measures for this Contract will be implemented in accordance with Article 15 of the Standard Specifications, and Road Construction Plans F-84-51.

DEPARTMENT OF PUBLIC WORKS
 HOWARD COUNTY, MARYLAND
Robert M. Bennett 12-15-83
 DIRECTOR OF PUBLIC WORKS - DATE
Robert M. Bennett 12-9-83
 CHIEF - BUREAU OF UTILITIES - DATE

WHITMAN, REQUARDT AND ASSOCIATES ENGINEERS
 2315 ST. PAUL ST. BALTIMORE MARYLAND



DES S.J.
 DRN J.R.K.
 CHK R.B.N.
 DATE 11/10/83
 BY NO. REVISION DATE

VICINITY MAP AND GENERAL NOTES
 JRK
 Changed Quantity Box
 12/20/83

COLUMBIA VILLAGE OF HICKORY RIDGE SECTION 3 AREA 5 ELECTION DISTRICT NO. 5 CONTRACT NO. 34-1164-D
 Phase III, Part 1 Water Main Extensions

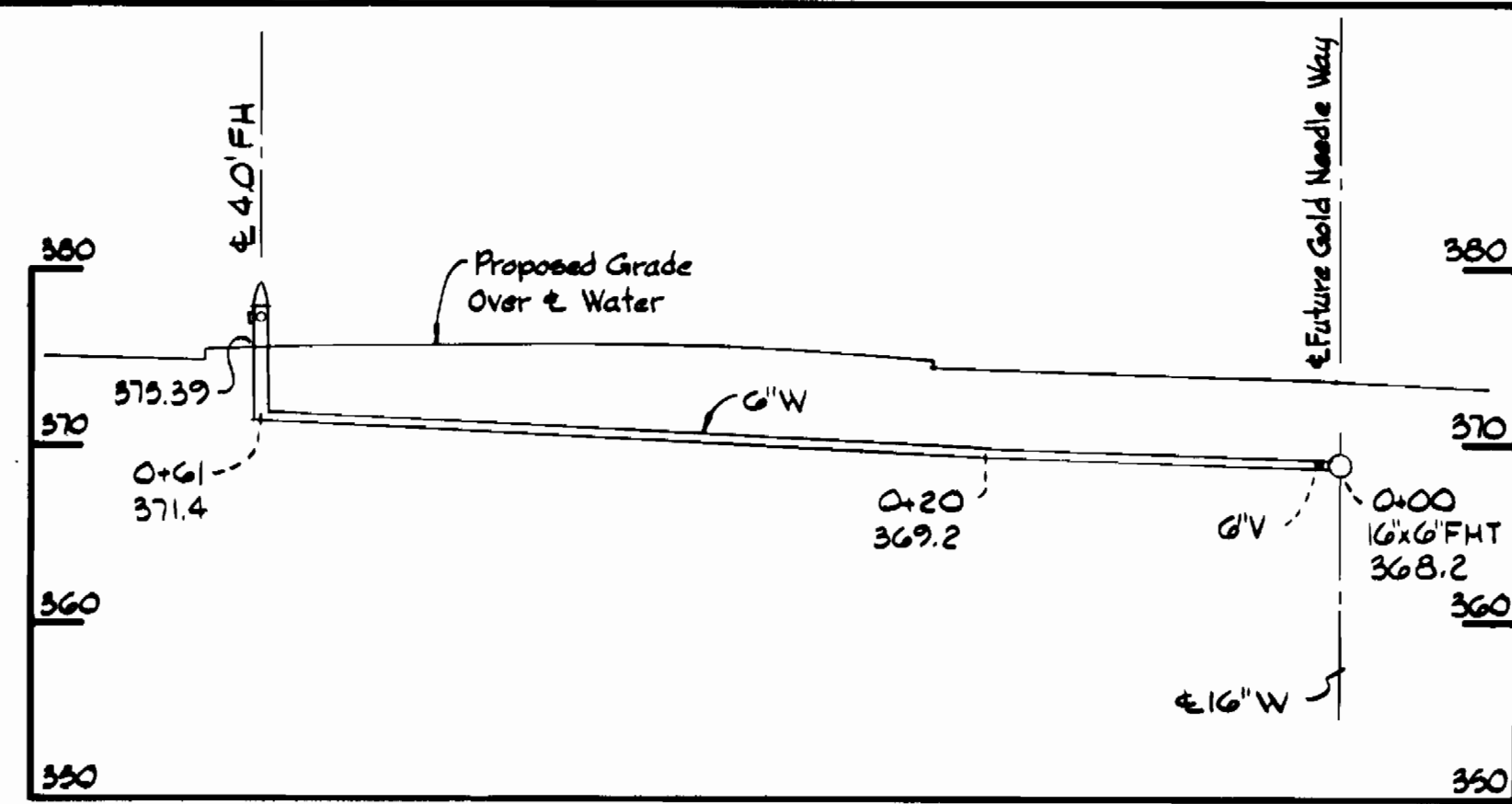
SCALE 1"=600'
 SHEET 1 OF 4

QUANTITIES			
ITEM	BID	AS-BUILT	MATERIAL/SUPPLIER
16" Water LF	1360	1361	U.S. PIPE
16" Valve/Vault Ea.	1	1	16" V. SMITH/VAULT-PENN
12" Water LF	340	338	U.S. PIPE
12" Valves Ea.	2	2	SMITH METRO.
8" Water LF	810	811	U.S. PIPE
8" Valves Ea.	5	5	SMITH METRO.
6" Water LF	310	304	U.S. PIPE
6" V (Excluding FH) Ea.	2	2	SMITH METRO.
Fire Hydrant Ea.	6	6	SMITH METRO.
Air Release NH Ea.	1	1	ATLANTIC PRECAST
8" Sewer LF	260	250	E.T.I.
Manholes Ea.	2	2	ATLANTIC PRECAST

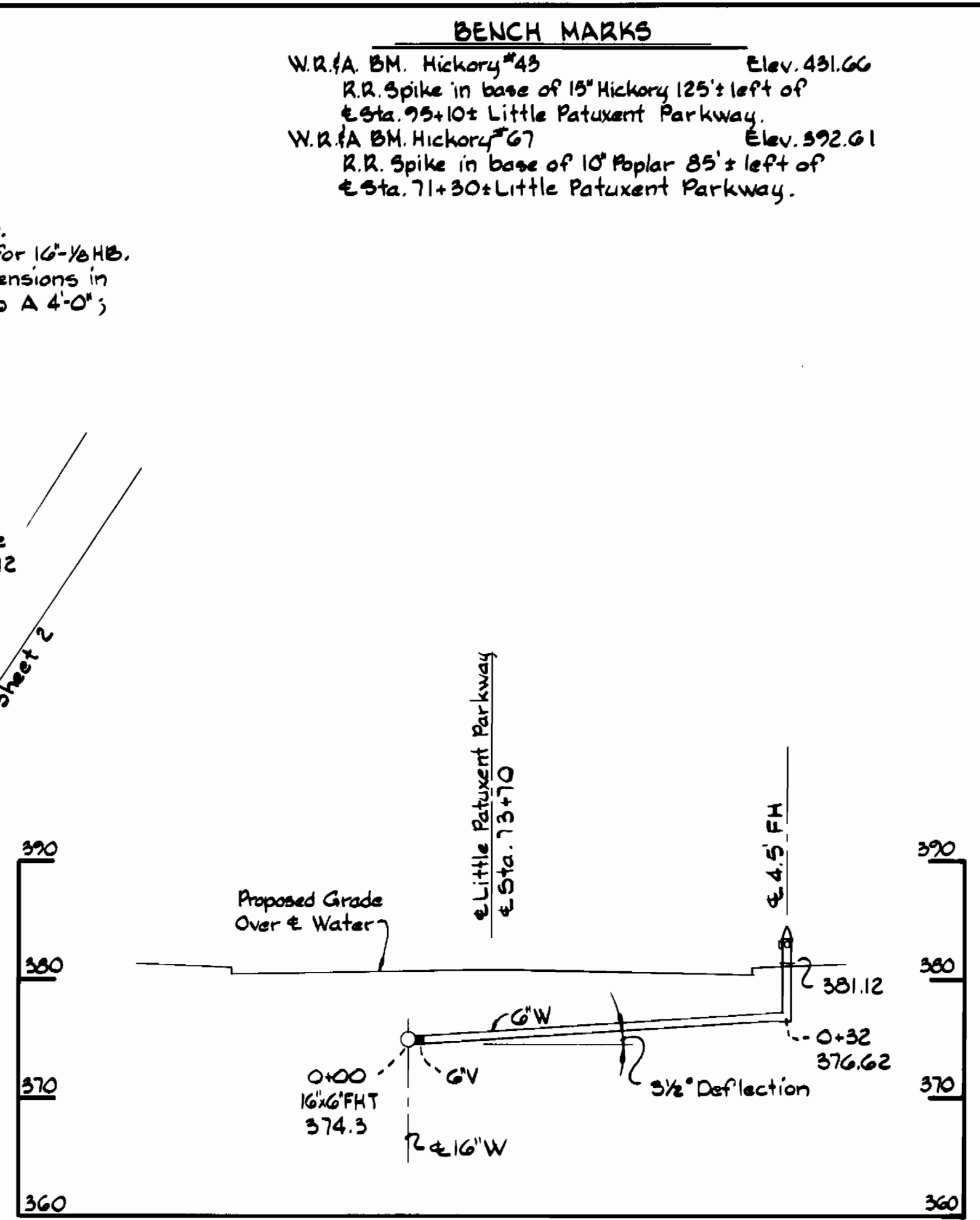
GENERAL NOTES

- APPROXIMATE LOCATION OF EXISTING MAINS ARE SHOWN. THE CONTRACTOR SHALL TAKE ALL NECESSARY PRECAUTIONS TO PROTECT EXISTING MAINS AND SERVICES AND MAINTAIN UNINTERRUPTED SUPPLY. ANY DAMAGE INCURRED SHALL BE REPAIRED IMMEDIATELY TO THE SATISFACTION OF THE ENGINEER, AT THE CONTRACTOR'S EXPENSE.
- ALL HORIZONTAL CONTROLS ARE BASED ON MARYLAND STATE COORDINATES.
- ALL VERTICAL CONTROLS ARE BASED ON U.S.G.S. DATUM.
- ALL PIPE ELEVATIONS SHOWN ARE INVERT ELEVATIONS.
- CLEAR ALL UTILITIES BY A MINIMUM OF 6". CLEAR ALL POLES BY 2'-0" MINIMUM OR TUNNEL AS REQUIRED. ANY COST INCURRED TO THE CONTRACTOR FOR TUNNELING OR BRACING AT POLES SHALL BE INCLUDED IN UNIT PRICES BID FOR CONSTRUCTION OF THE MAIN.
- FOR DETAILS NOT SHOWN ON THE DRAWINGS USE HOWARD COUNTY STANDARD DETAILS.
- FOR MATERIALS AND CONSTRUCTION METHODS USE HOWARD COUNTY STANDARD SPECIFICATIONS.
- CONTRACTOR SHALL LOCATE EXISTING UTILITIES A MINIMUM OF TWO (2) WEEKS IN ADVANCE OF CONSTRUCTION OPERATIONS IN THE VICINITY OF PROPOSED UTILITIES AT HIS OWN EXPENSE.
- CONTRACTOR SHALL NOTIFY THE FOLLOWING UTILITIES OR AGENCIES AT LEAST FIVE (5) WORKING DAYS BEFORE STARTING WORK SHOWN ON THESE PLANS:
 STATE HIGHWAY ADMINISTRATION - 531-5533
 BALTIMORE GAS & ELECTRIC COMPANY - UNDERGROUND ELECTRIC DISTRIBUTION CUSTOMER SERVICE - 685-0123.
 BALTIMORE GAS & ELECTRIC COMPANY - UNDERGROUND GAS DISTRIBUTION CUSTOMER SERVICE - 685-0123.
 ENGINEERING - "DAMAGE CONTROL" - 234-5621.
 "MISS UTILITY" - 1 - 559-0100
 CHESAPEAKE & POTOMAC (C&P) TELEPHONE COMPANY - 725-9976.
 AMERICAN TELEPHONE AND TELEGRAPH - CABLE LOCATION DIVISION - 393-3553.
 COLONIAL PIPELINE COMPANY - 781-4641.
 BUREAU OF UTILITIES HOWARD COUNTY - 992-2366.
- TREES ARE TO BE PROTECTED FROM DAMAGE TO MAXIMUM EXTENT. TREES LOCATED WITHIN THE CONSTRUCTION STRIP ARE NOT TO BE REMOVED OR DAMAGED BY THE CONTRACTOR.
- CONTRACTOR SHALL REMOVE TREES, STUMPS AND ROOTS ALONG LINE OF EXCAVATION AS DIRECTED BY THE ENGINEER. PAYMENT FOR SUCH REMOVAL SHALL BE INCLUDED IN THE UNIT PRICE BID FOR CONSTRUCTION OF THE MAIN.
- PLACE REGULATION "MEN WORKING" AND WARNING SIGNS AS REQUIRED TO COMPLY WITH MARYLAND STATE HIGHWAY ADMINISTRATION MANUAL OF TRAFFIC CONTROL FOR HIGHWAY CONSTRUCTION AND MAINTENANCE OPERATIONS.
- ALL WATER MAINS SHALL BE D.I.P. UNLESS OTHERWISE NOTED.
- TOP OF ALL WATER MAINS SHALL HAVE A MINIMUM OF 3-1/2' COVER UNLESS OTHERWISE NOTED.
- VALVES ADJACENT TO TEES SHALL BE STRAPPED TO TEES.
- BLOCK ALL FITTINGS WITH CONCRETE.
- BURY LINE ELEVATIONS ON FIRE HYDRANTS SHALL BE SET TO THE ELEVATIONS SHOWN ON THE DRAWINGS. ALL FIRE HYDRANTS SHALL BE STRAPPED AND BUTTRESSED WITH CONCRETE IN ACCORDANCE WITH STANDARD DETAILS. SOIL AROUND THE FIRE HYDRANT TO BE COMPACTED IN ACCORDANCE WITH SECTIONS 37.01 AND 37.05 OF THE STANDARD SPECIFICATIONS.
- ALL WATER HOUSE CONNECTIONS SHALL BE FOR AN INSIDE METER SETTING.
- THE CONTRACTOR SHALL NOT OPERATE ANY WATER MAIN VALVES ON THE EXISTING SYSTEM.
- ALL SEWER MAINS SHALL BE C.S.P.X., R.C.S.P., V.C.P.X., A.C.P. CLASS 2400 OR PVC UNLESS OTHERWISE NOTED.
- THE CONTRACTOR SHALL PROVIDE A JOINT IN ALL SEWER MAINS WITHIN 2'-0" OF EXTERIOR MANHOLE WALL.
- ALL MANHOLES SHALL BE 4'-0" INSIDE DIAMETER, UNLESS OTHERWISE NOTED.
- MANHOLES SHOWN WITH 12" AND 16" WALLS ARE FOR BRICK MANHOLES ONLY.
- MANHOLES DESIGNATED W.T. IN PLAN AND PROFILE SHALL HAVE WATERTIGHT FRAME AND COVERS. STANDARD DETAIL 61-85. G 5.52
- ALL MANHOLE FRAME AND COVERS SHALL BE SET 0.5' ABOVE EXISTING GRADE WHERE SHOWN IN PROFILE. SEE DETAIL G 5.41.
- ORIGINAL GROUND OVER WATER WAS TAKEN FROM AERIAL PHOTOGRAPHY PREPARED BY MAPS AND INC., AND VERIFIED BY FIELD SURVEY IN AUG., 1981.
- ALL COPPER WATER HOUSE CONNECTIONS SHALL UTILIZE FLARED FITTINGS.

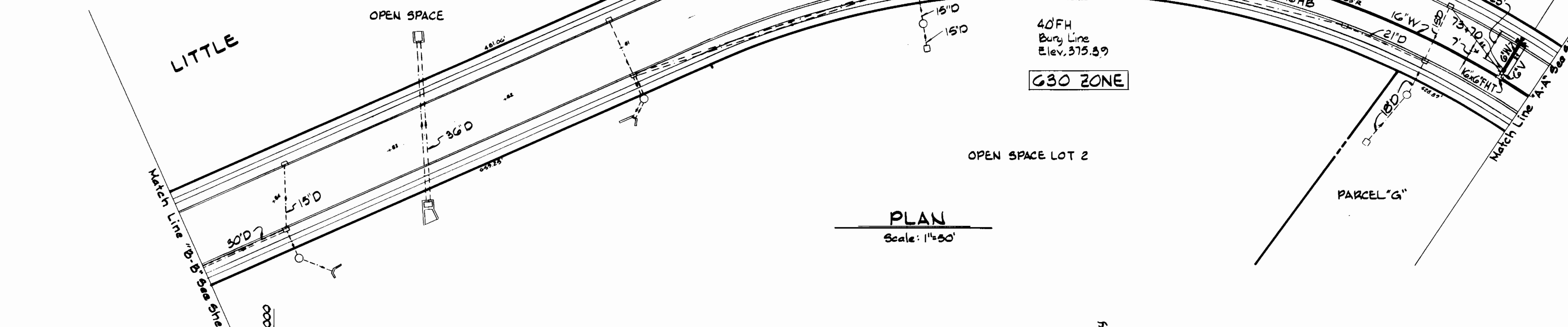
CONTRACT NO. 34-1164-D
 VILLAGE OF HICKORY RIDGE
 HOWARD COUNTY, MARYLAND
 DEPARTMENT OF PUBLIC WORKS



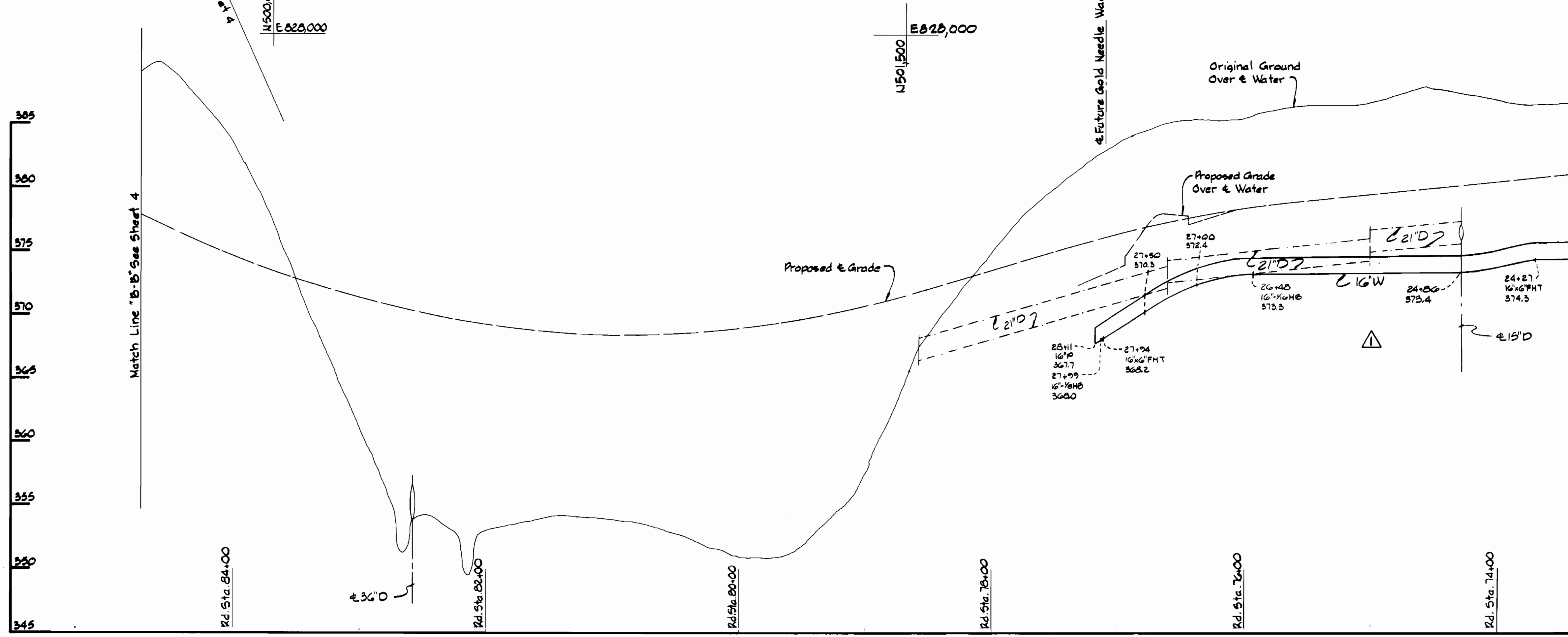
PROFILE
Scale: 1"=10' H.V.



PROFILE
Scale: 1"=10' H.V.



PLAN
Scale: 1"=50'



PROFILE
Scale: H: 1"=50' V: 1"=5'

- NOTES:**
1. Deflect Joints 2 1/2" each @ Sta. 27+95, 27+98 and 28+00.
 2. Special Buttrass required for 16"-1/8" HB. @ Sta. 27+99. Increase dimensions in Standard Detail W.2.21 to A 4'-0"; B 1'-6"; C 1'-6".

BENCH MARKS

W.R.F.A. BM. Hickory #45 Elev. 431.66
 R.R. Spike in base of 15" Hickory 125'± left of
 Sta. 75+10± Little Patuxent Parkway.
 W.R.F.A. BM. Hickory #67 Elev. 392.61
 R.R. Spike in base of 10" Poplar 85'± left of
 Sta. 71+30± Little Patuxent Parkway.

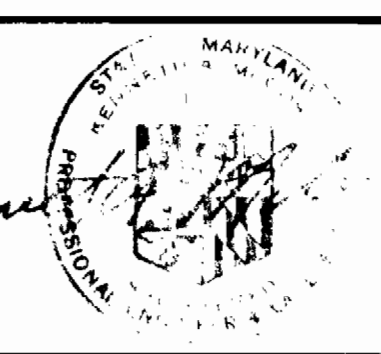
DEPARTMENT OF PUBLIC WORKS
 HOWARD COUNTY, MARYLAND

Robert M. Seinger 12-9-83
 CHIEF - BUREAU OF UTILITIES - DATE

William B. Ray 12-15-83
 CHIEF - BUREAU OF ENGINEERS - DATE

WHITMAN, REQUARDT
 AND ASSOCIATES
 ENGINEERS

2315 ST. PAUL ST.
 BALTIMORE, MARYLAND



DES: S.J.			
DOR: J.R.K.			
CHK: R.B.N.			
DATE: 11/10/83	J.R.K. 1	Lowered 16" Water Main	6/1/84
BY NO.		REVISION	DATE

**PLAN & PROFILE OF
 WATER MAINS**

800' SCALE MAP NO. 35 BLOCK NO.

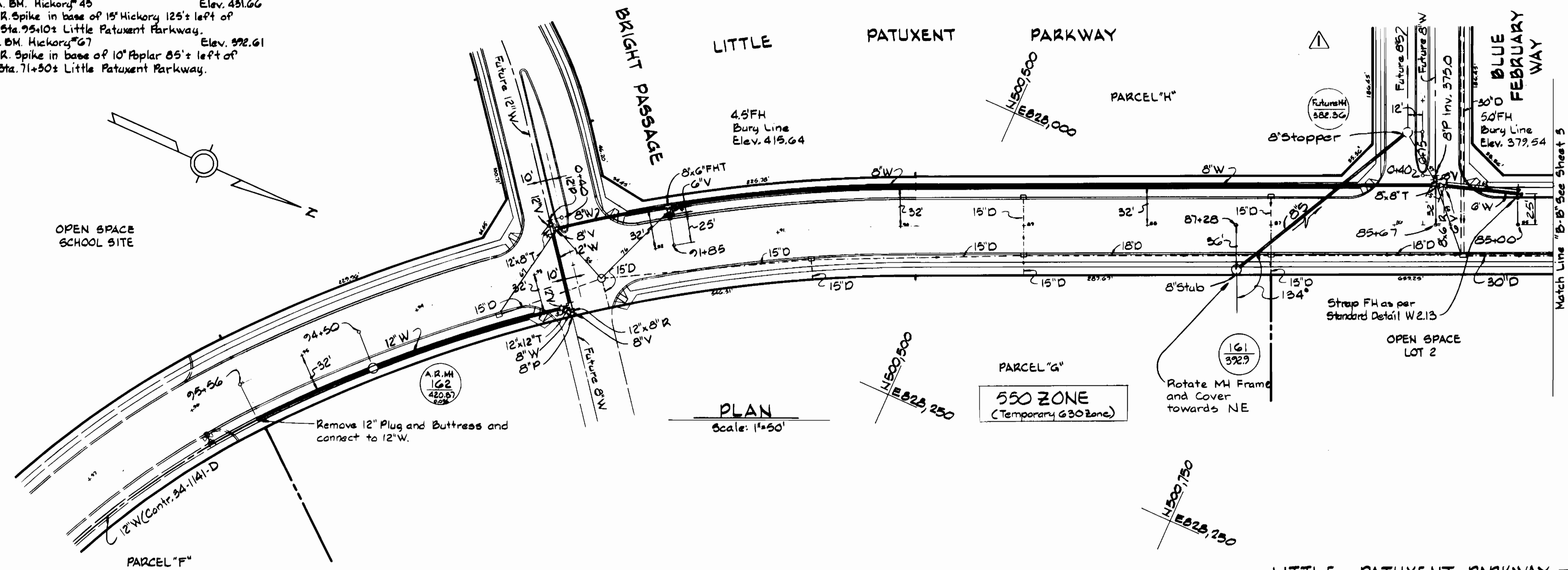
COLUMBIA
 VILLAGE OF HICKORY RIDGE
 SECTION 3 AREA 5
 ELECTION DISTRICT NO. 5
 CONTRACT NO. 34-1164-D

SCALE
 AS
 SHOWN

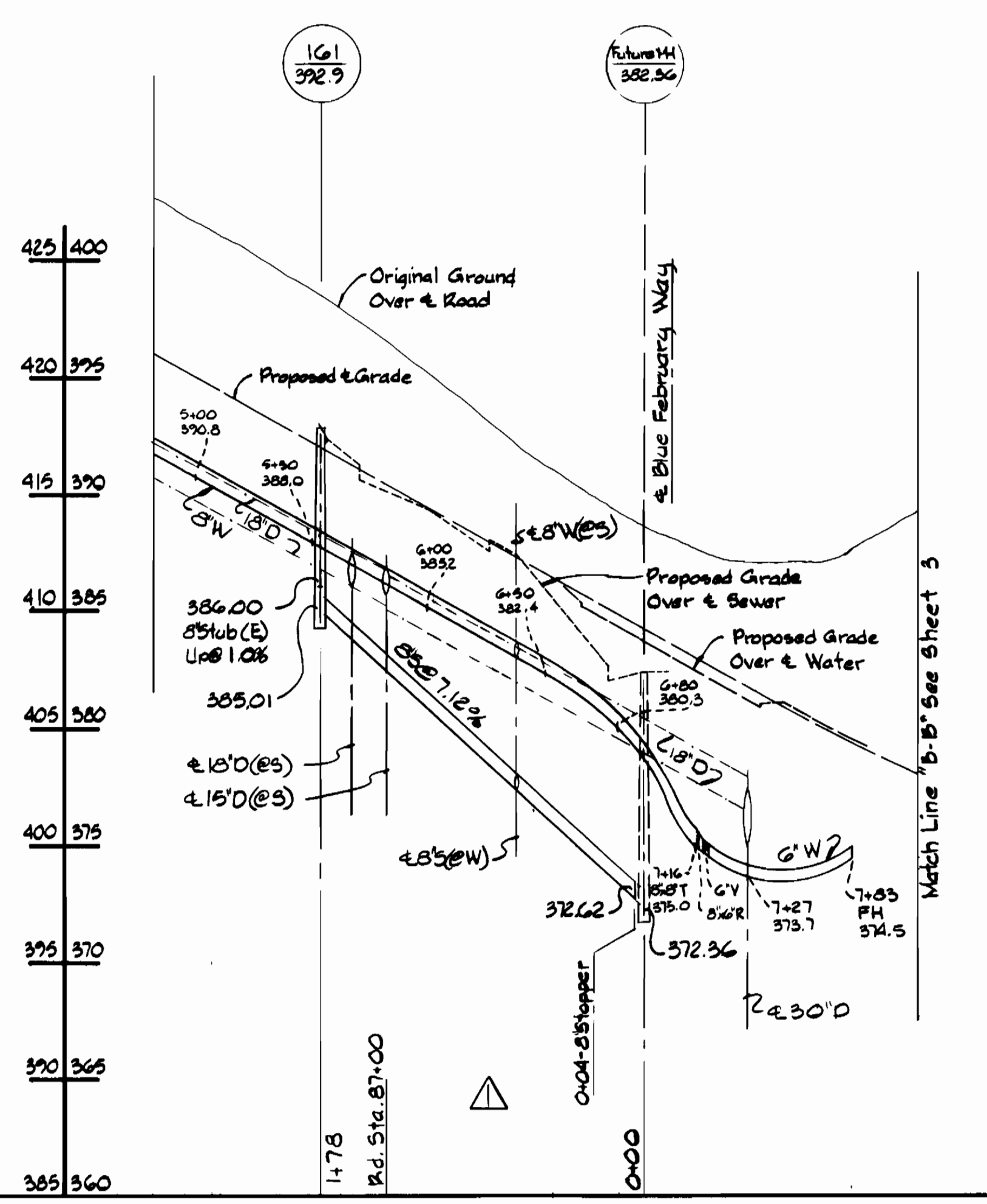
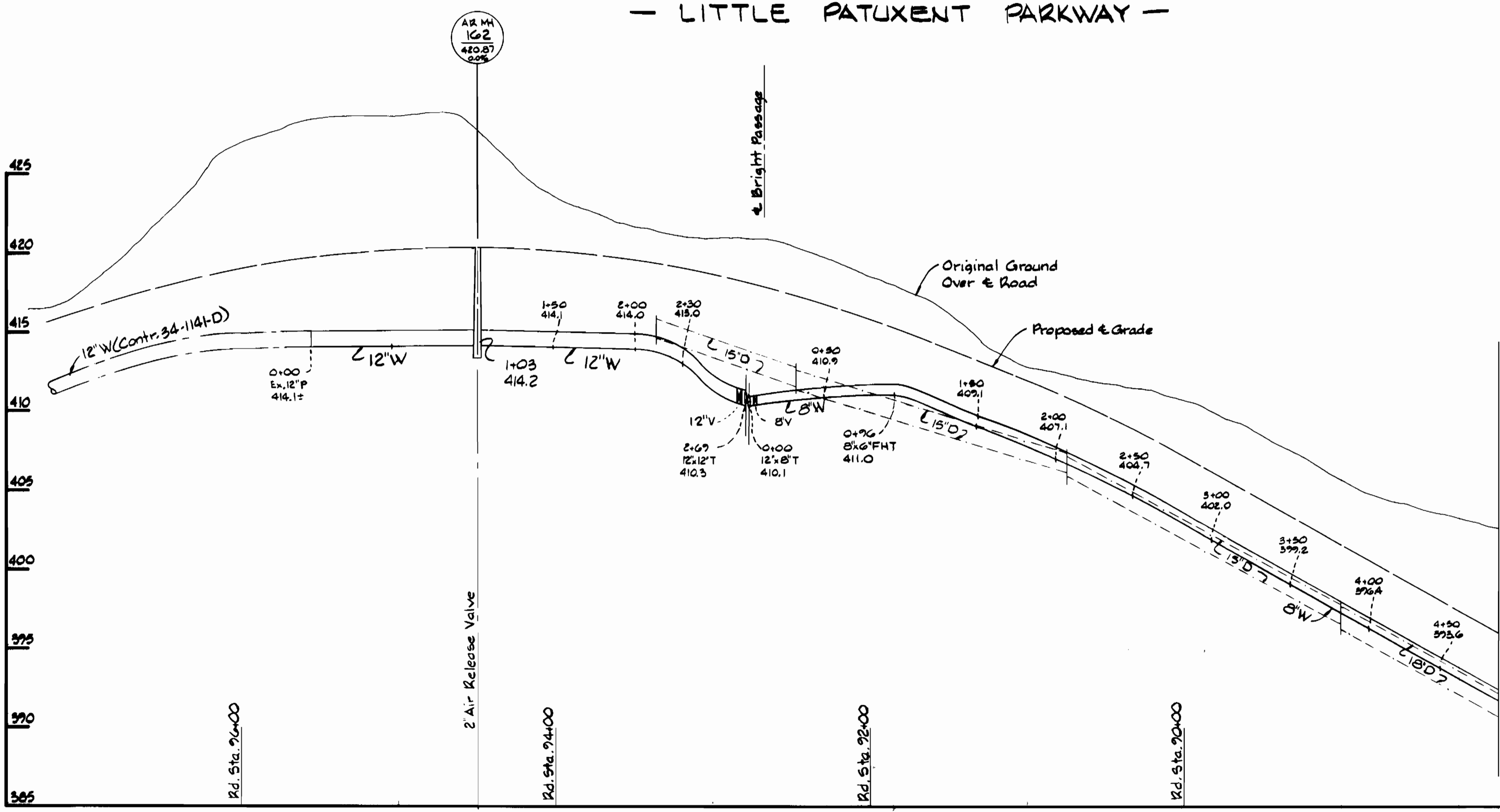
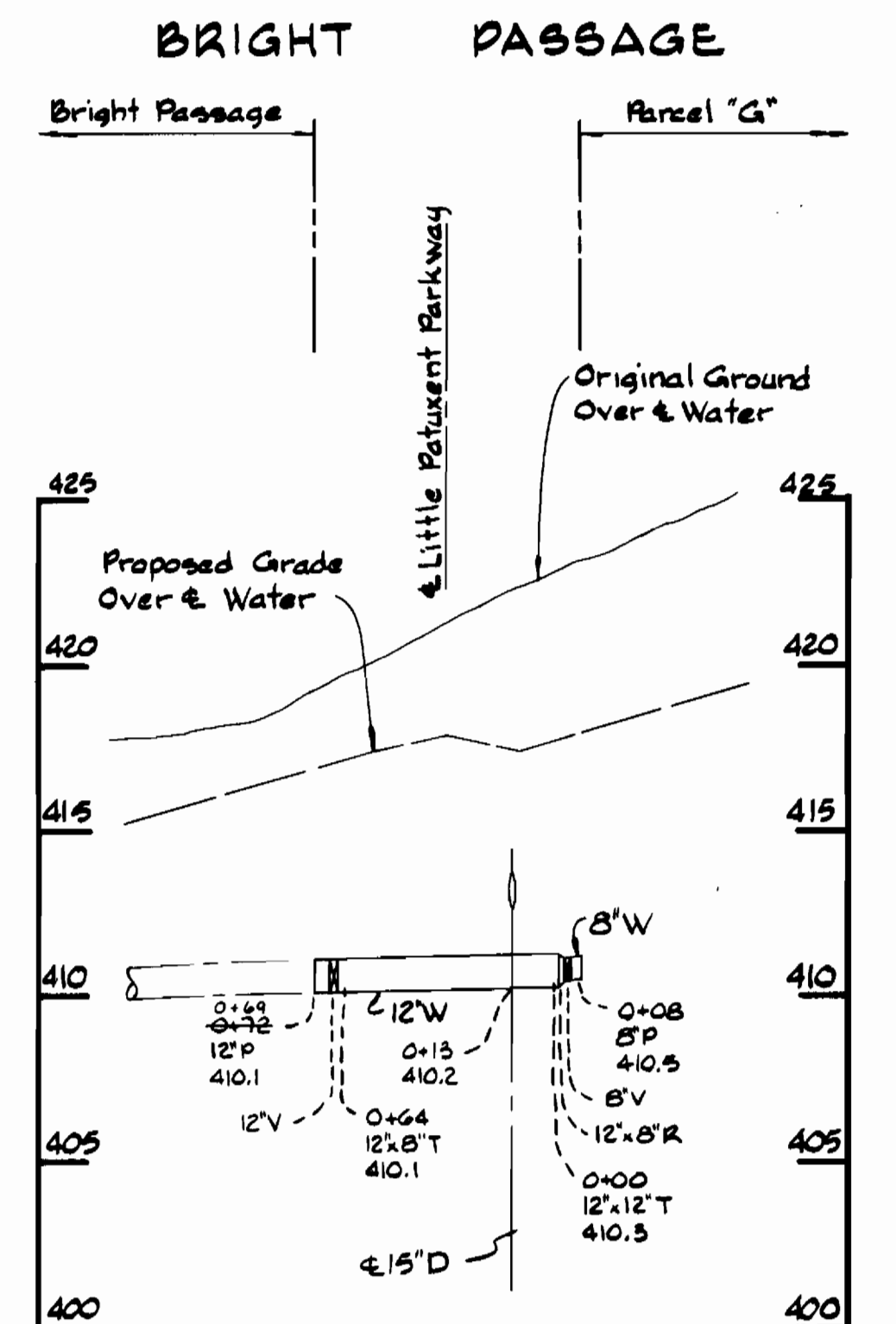
SHEET
 3 OF 4

BENCH MARKS
 W.R.A. BM. Hickory #45 Elev. 491.66
 R.R. Spike in base of 15' Hickory 125' left of
 & Sta. 75+10+ Little Patuxent Parkway.
 W.R.A. BM. Hickory #67 Elev. 392.61
 R.R. Spike in base of 10' Spruce 85' left of
 & Sta. 71+50+ Little Patuxent Parkway.

OPEN SPACE
SCHOOL SITE



PLAN
Scale: 1"=50'



PROFILES
Scale: H: 1"=50'
V: 1"=5'

35,900-828.5

Phase III, Part I
Water Main Extensions

DEPARTMENT OF PUBLIC WORKS
HOWARD COUNTY, MARYLAND
 Director: Robert M. Bainger
 Chief - Bureau of Engineering: [Signature]
 Chief - Bureau of Utilities: [Signature]
 Chief - Land Development Division: [Signature]

WHITMAN, REQUARDT AND ASSOCIATES ENGINEERS
2315 ST. PAUL ST.
BALTIMORE, MARYLAND

DES: S.J.			
DRN: J.R.K.			
CHK: R.B.N.			
DATE: 11/10/83	JRK	Changed Blue February Way	12-20-83
BY: NO.		REVISION	DATE

PLAN & PROFILE OF WATER & SEWER MAINS

COLUMBIA VILLAGE OF HICKORY RIDGE SECTION 3 AREA 5
ELECTION DISTRICT NO. 5
CONTRACT NO. 34-1164-D

SCALE AS SHOWN
SHEET 4 OF 4