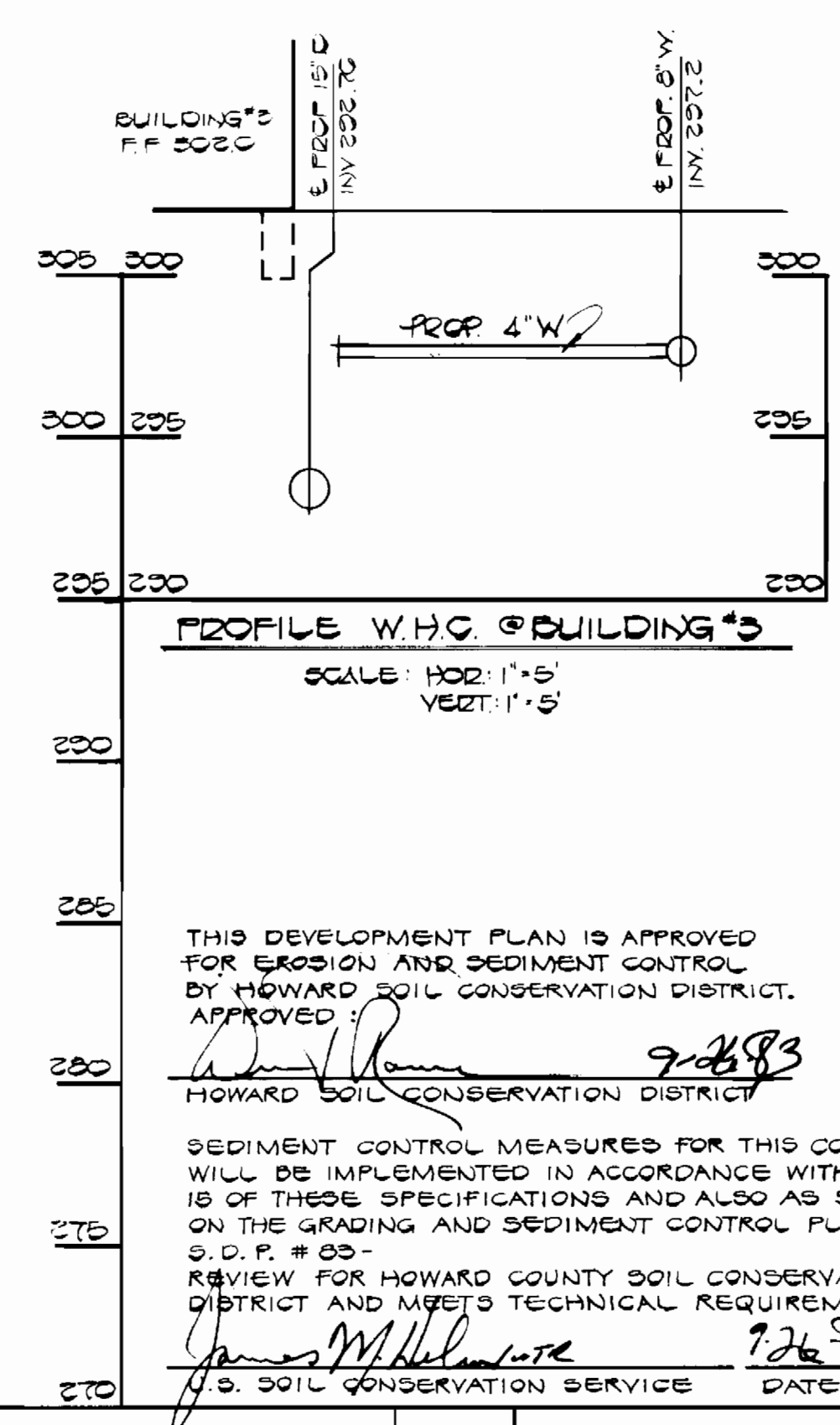
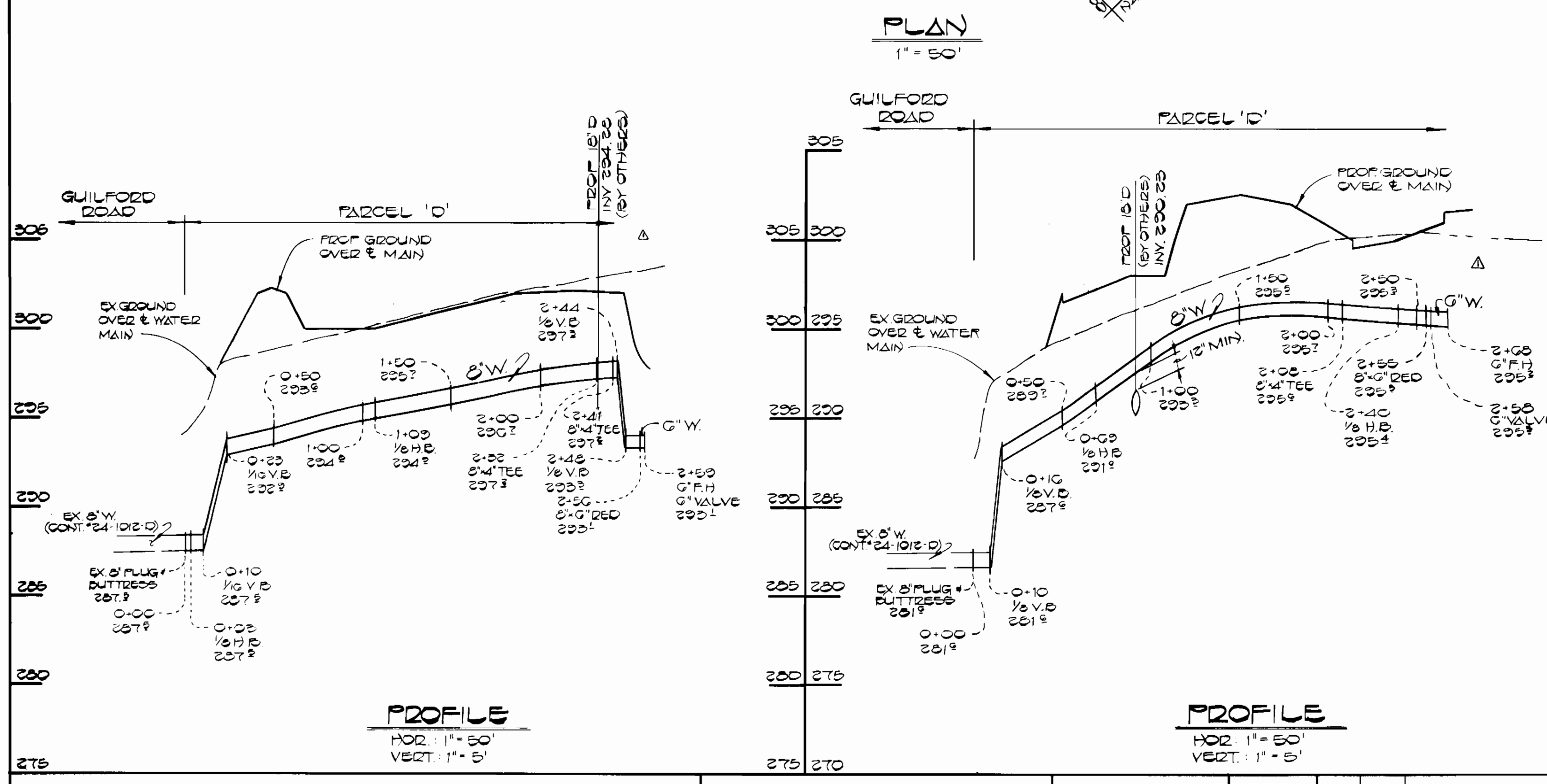


TYPE OF BUILDING:	SERVICE CENTER/OFFICE
NUMBER OF LOTS:	1
NO. OF WATER HOUSE CONN.:	3
NO. OF SEWER HOUSE CONN.:	3
DRAINAGE AREA:	LITTLE PATENT

VICINITY MAP
SCALE: 1"=600'

GENERAL NOTES

- APPROXIMATE LOCATION OF EXISTING MAINS ARE SHOWN. THE CONTRACTOR SHALL TAKE ALL NECESSARY PRECAUTIONS TO PROTECT EXISTING MAINS AND SERVICES AND MAINTAIN UNINTERRUPTED SUPPLY. ANY DAMAGE INCURRED SHALL BE REPAIRED IMMEDIATELY TO THE SATISFACTION OF THE ENGINEER - AT CONTRACTOR'S EXPENSE.
- ALL HORIZONTAL CONTROLS ARE BASED ON MARYLAND STATE COORDINATES.
- ALL VERTICAL CONTROLS ARE BASED ON U.S.C. & G.S. DATUM.
- ALL PIPE ELEVATIONS SHOWN ARE INVERT ELEVATIONS.
- CLEAR ALL UTILITIES BY A MINIMUM OF 6" CLEAR ALL POLES BY 2'-0" MINIMUM OR TUNNEL AS REQUIRED. ANY COST INCURRED TO THE CONTRACTOR FOR TUNNELING OR BRACING AT POLES SHALL BE INCLUDED IN THE UNIT PRICES FOR CONSTRUCTION OF THE MAIN.
- FOR DETAILS NOT SHOWN ON THE DRAWING USE HOWARD COUNTY STANDARD DETAILS.
- FOR MATERIALS AND CONSTRUCTION METHODS USE HOWARD COUNTY STANDARD SPECIFICATIONS.
- CONTRACTOR SHALL LOCATE EXISTING UTILITIES A MINIMUM OF TWO (2) WEEKS IN ADVANCE OF CONSTRUCTION OPERATIONS IN THE VICINITY OF PROPOSED UTILITIES AT HIS OWN EXPENSE.
- CONTRACTOR SHALL NOTIFY THE FOLLOWING UTILITIES OR AGENCIES AT LEAST FIVE (5) WORKING DAYS BEFORE STARTING WORK SHOWN ON THESE PLANS:
 - BALTIMORE GAS AND ELECTRIC CO. - UNDERGROUND ELECTRIC DISTRIBUTION
CUSTOMER SERVICE - (685-0123)
 - BALTIMORE GAS AND ELECTRIC CO. - UNDERGROUND GAS DISTRIBUTION
CUSTOMER SERVICE - (685-0123)
 - ENGINEERING - "DAMAGE CONTROL" - (234-5621)
 - "MISS UTILITY" - (1-559-0100)
 - CHESAPEAKE AND POTOMAC TELEPHONE CO. - (725-9976)
 - BUREAU OF UTILITIES, HOWARD COUNTY - (992-2366)
- TREES ARE TO BE PROTECTED FROM DAMAGE TO MAXIMUM EXTENT. TREES LOCATED WITHIN THE CONSTRUCTION STRIP ARE NOT TO BE REMOVED OR DAMAGED BY THE CONTRACTOR.
- CONTRACTOR SHALL REMOVE TREES, STUMPS AND ROOTS ALONG LINE OF EXCAVATION AS DIRECTED BY THE ENGINEER. PAYMENT FOR SUCH REMOVAL SHALL BE INCLUDED IN THE UNIT PRICE BID FOR THE CONSTRUCTION OF THE MAIN.
- PLACE REGULATION "MEN WORKING" AND WARNING SIGNS AS REQUIRED TO COMPLY WITH MARYLAND STATE HIGHWAY ADMINISTRATION MANUAL OF TRAFFIC CONTROL FOR HIGHWAY CONSTRUCTION AND MAINTENANCE OPERATION.
- ALL WATER MAINS TO BE C.I.P., D.I.P. OR P.C.C.P. UNLESS OTHERWISE NOTED.
- TOP OF ALL WATER MAINS SHALL HAVE A MINIMUM OF 3'-6" COVER UNLESS OTHERWISE NOTED.
- VALVES ADJACENT TO TEES SHALL BE STRAPPED TO TEES.
- BLOCK ALL FITTINGS WITH CONCRETE.
- BURY LINE ELEVATIONS ON FIRE HYDRANTS SHALL BE SET TO THE ELEVATIONS SHOWN ON THE DRAWINGS. ALL FIRE HYDRANTS SHALL BE STRAPPED AND BUTTRESSED WITH CONCRETE IN ACCORDANCE WITH STANDARD DETAILS. SOIL AROUND THE FIRE HYDRANTS TO BE COMPACTED IN ACCORDANCE WITH SECTION 37.01 AND 37.05 OF THE STANDARD SPECIFICATIONS.
- ALL WATER HOUSE CONNECTIONS SHALL BE FOR "INSIDE METER SETTINGS".
- THE CONTRACTOR SHALL NOT OPERATE ANY WATER MAIN VALVES ON THE EXISTING SYSTEM.
- FOR ALL COPPER WATER HOUSE CONNECTIONS, UTILIZE FLARED TYPE FITTINGS ONLY.
- CONTRACTOR SHALL INSTALL 2" PRV ON 2" DOMESTIC METER SUPPLY.



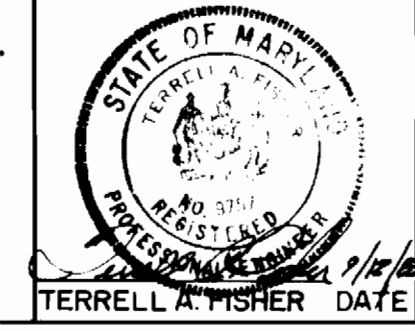
THIS DEVELOPMENT PLAN IS APPROVED FOR EROSION AND SEDIMENT CONTROL BY HOWARD SOIL CONSERVATION DISTRICT. APPROVED: *[Signature]* 9/26/83
HOWARD SOIL CONSERVATION DISTRICT
SEDIMENT CONTROL MEASURES FOR THIS CONTRACT WILL BE IMPLEMENTED IN ACCORDANCE WITH ARTICLE 15 OF THESE SPECIFICATIONS AND ALSO AS SHOWN ON THE GRADING AND SEDIMENT CONTROL PLAN S.D.P. # 83- REVIEW FOR HOWARD COUNTY SOIL CONSERVATION DISTRICT AND MEET TECHNICAL REQUIREMENTS
[Signature] 9/26/83
S.D. SOIL CONSERVATION SERVICE DATE

QUANTITIES			
ITEM	EST'D	AS-BUILT	SUPPLIER
8" W	511 L.F.		
6" W	18 L.F.		
4" W	30 L.F.		
4" F.H. VALVE	2		
4" W	30 L.F.		

DEPARTMENT OF PUBLIC WORKS
HOWARD COUNTY, MARYLAND
DIRECTOR OF PUBLIC WORKS: *[Signature]* 10-4-83
DATE: 10-3-83
CHIEF, BUREAU OF UTILITIES

CHIEF, BUREAU OF ENGINEERING: *[Signature]* DATE
CHIEF, LAND DEVELOPMENT DIVISION: *[Signature]* DATE

FISHER, COLLINS AND CARTER, INC.
CONSULTING ENGINEERS AND LAND SURVEYORS
8388 COURT AVENUE
ELLIOTT CITY, MARYLAND 21043
461-2855



DES. T.A.F.					
DRN. B.G.O.					
CHK. T.A.F.					
T.A.F.	Δ	REVISE OUTSIDE METER SETTING TO INSIDE METER.	5-17-84		
DRN.	Δ	RELOCATE F.H. AT BUILDING NO. 1, REVISE SIZE IN FRONT OF BUILDING 1 & 2.	1-4-84		
BY	NO.	REVISION	DATE		

PLAN AND PROFILE
WATER MAINS

RIVERS CORPORATE PARK
PARCEL 'D'
SECTION TWO AREA ONE
CONTRACT NO. 44-1150-D
SIXTH ELECTION DISTRICT
HOWARD COUNTY, MARYLAND

SCALE: AS SHOWN
SHEET 1 OF 1