

GENERAL NOTES

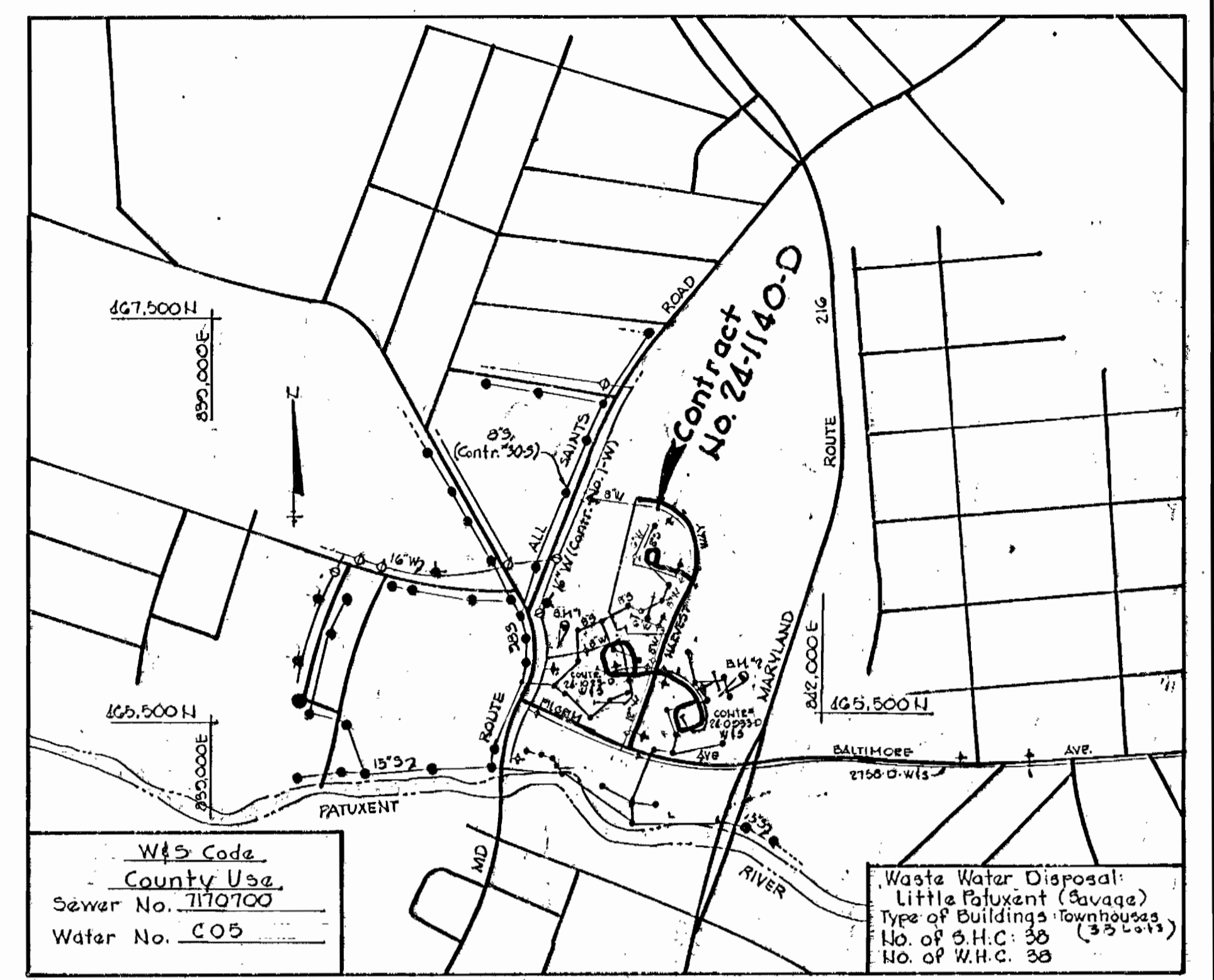
- Approximate location of existing mains are shown. The Contractor shall take all necessary precautions to protect existing mains and services and maintain uninterrupted supply. Any damage incurred shall be repaired immediately to the satisfaction of the Engineer, at the Contractor's expense.
- All horizontal controls are based on Maryland State Coordinates.
- All vertical controls are based on U.S.G.S. Datum.
- All pipe elevations shown are invert elevations.
- Clear all utilities by a minimum of 6'. Clear all poles by 2'-0" minimum or funnel as required. Any cost incurred to the Contractor for tunneling or bracing at poles shall be included in unit prices bid for excavation and backfill.
- For details not shown on drawings use Howard County Standard Details.
- For materials and construction methods use Howard County Standard Specifications.
- Contractor shall locate existing utilities a minimum of two (2) weeks in advance of construction operations in the vicinity of proposed utilities at his own expense.
- Contractor shall notify the following utilities or agencies at least five (5) working days before starting work shown on these plans:
 - State Highway Administration 531-5533
 - Baltimore Gas and Electric Company
Underground Electric Distribution Customer Service 685-0123
 - Baltimore Gas and Electric Company
Underground Gas Distribution Customer Service 685-0123
234-5621
 - Engineering - "Damage Control" 1-559-0100
 - Miss Utility 725-9976
 - Chesapeake and Potomac Telephone Company
 - American Telephone and Telegraph
Cable Location Division 593-3533
781-4641
 - Colonial Pipeline Company 992-2366
 - Bureau of Utilities Howard County
- Trees are to be protected from damage to maximum extent. Trees located within the construction strip are not to be removed or damaged by the Contractor.
- Contractor shall remove trees, stumps and roots along line of excavation as directed by the Engineer. Payment for such removal shall be included in the unit price bid for excavation and backfill.
- Place regulation "Men Working" and warning signs as required to comply with Maryland State Highway Administration Manual of Traffic Control for Highway Construction and Maintenance Operations.
- All water mains to be D.I.P. unless otherwise noted.
- Top of all water mains to have a minimum of 3'-1/2" cover unless otherwise noted.
- Valves adjacent to tees shall be strapped to tees.
- Block all fittings with concrete.
- Bury line elevations on fire hydrants shall be set to the elevations shown on the drawings. All fire hydrants shall be strapped and buttressed with concrete in accordance with standard details. Soil around the fire hydrant to be compacted in accordance with Section 37.014.37.05 of the Standard Specifications.
- All water house connections shall be for inside meter setting.
- The contractor shall not operate any water main valves on the existing system.
- All sewer mains shall be C.S.P.X., V.C.P.X., P.V.C. or A.C.P. Class 2400 unless otherwise noted.
- The contractor shall provide a joint in all sewer mains within 2'-0" of exterior manhole walls.
- All manholes shall be 4'-0" inside diameter, unless otherwise noted.
- For all copper water house connections utilize flared type fittings only.
- Manholes shown with 12" and 16" walls are brick manholes only.
- Manholes designated W.T. in plan and profile shall have watertight frame and covers, Standard Detail 3-12 (RCR-63A). Where watertight frame and cover is used, set top of frame 1'-6" above finished grade.
- House(s) with the symbol "C.N.S." indicates that cellar can not be served.
- All water house connections shall have a minimum vertical clearance of 12" above all sanitary sewer crossings.
- All sanitary sewer house connections shall have a minimum vertical clearance of 12" below all water main crossings.

Air Release Manhole (1" Air Release Valve)
ARM#1
230.7

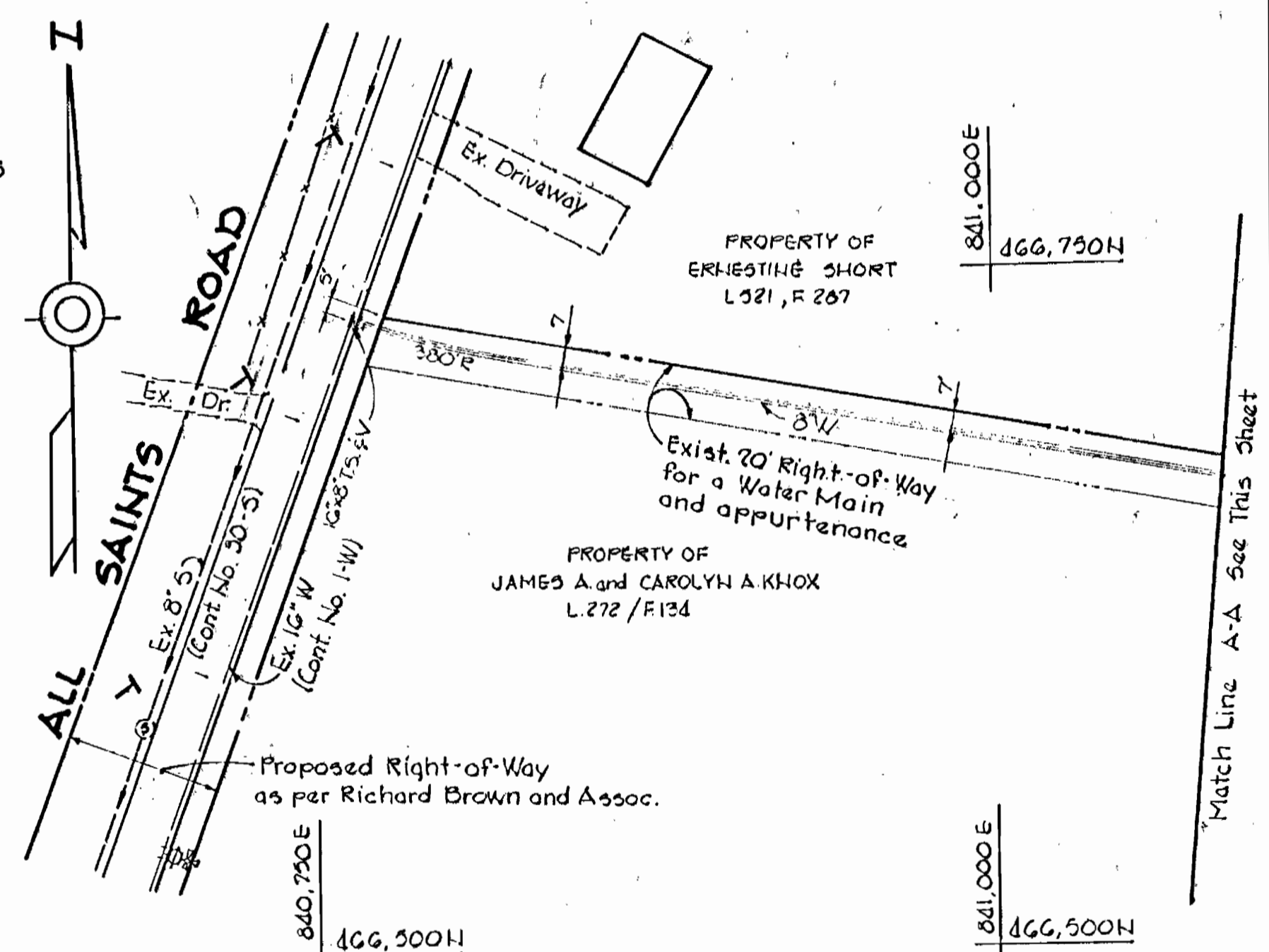
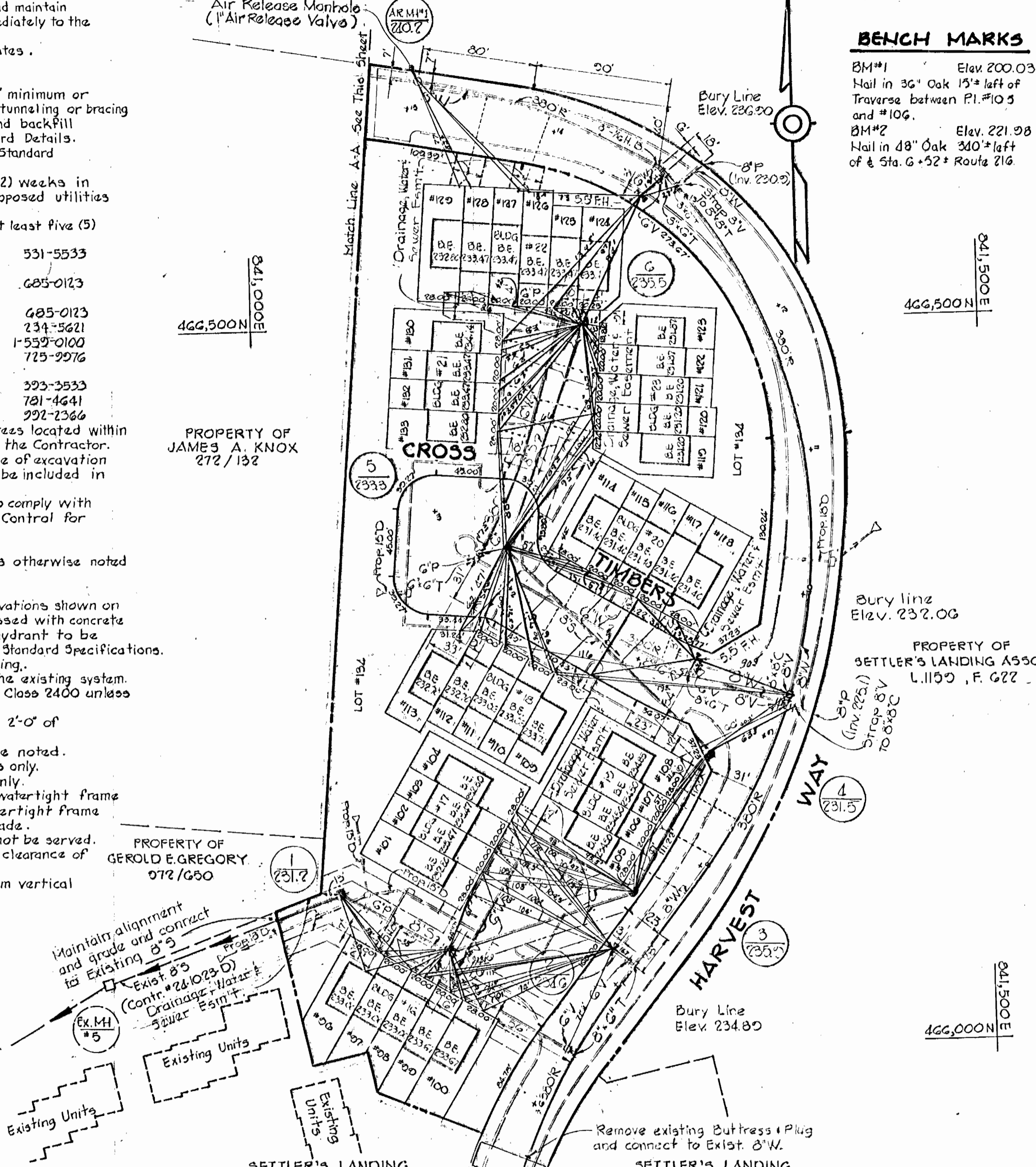
BENCH MARKS

BM#1 Elev. 200.03
Nail in 36" Oak 15' left of Traverse between P.I.#103 and #106.

BM#2 Elev. 221.98
Nail in 48" Oak 340' left of Sta. G+52+ Route 216



VICINITY MAP
Scale 1"=600'



PLAN
SCALE 1"=50'

ITEM	ESTIMATED	AS BUILT	MATERIAL/SUPPLIER
8" Sewer	735 L.F.		
Manholes	62.7 V.F.		
8" Water	1415 L.F.		
6" Water	647 L.F.		
8" V's	4		
6" V's (excl. F.H.V's)	3		
Fire Hydrants	3		
W.H.C. 38" I"	495 L.F.		
S.H.C. C"	810 L.F.		
16" x 8" T.S. & V.	1 Ea.		
Air Release Manhole	1 Ea.		

Settler's Landing
Section 2, Area 1
Contract No. 24-1140-D

6-28-83
DATE

Arthur E. Metzger
PROFESSIONAL ENGR. NO. 3707

SEDIMENT CONTROL MEASURES FOR THIS CONTRACT WILL BE IMPLEMENTED IN ACCORDANCE WITH ARTICLE 19 OF THE SPECIFICATIONS AND FINAL PLAN # F-82-87

HOWARD SOIL CONSERVATION DISTRICT:
REVIEWED FOR HOWARD SOIL CONSERVATION DISTRICT AND MEETS TECHNICAL REQUIREMENTS

James M. Blumberg 11-83
DATE

U.S. SOIL CONSERVATION SERVICE

Don McKone 11-83
DATE

THIS PLAN IS APPROVED FOR SOIL EROSION AND SEDIMENT CONTROL BY THE HOWARD SOIL CONSERVATION DISTRICT

DEPARTMENT OF PUBLIC WORKS
HOWARD COUNTY, MARYLAND

John F. Neuman 11-83
DIRECTOR OF PUBLIC WORKS - DATE

Robert M. Brumby 11-3-83
CHIEF - BUREAU OF UTILITIES - DATE

William E. ... 11/1/83
CHIEF - BUREAU OF ENGINEERING - DATE

...
CHIEF - LAND DEVELOPMENT DIVISION

No.	Date	Revision
1	3/7/84	Revised all Lot Numbers

CONTRACT NO. 24-1140-D

PLAN OF WATER AND SEWER MAINS

SETTLER'S LANDING SECTION - 2 AREA 1
6TH ELECTION DISTRICT

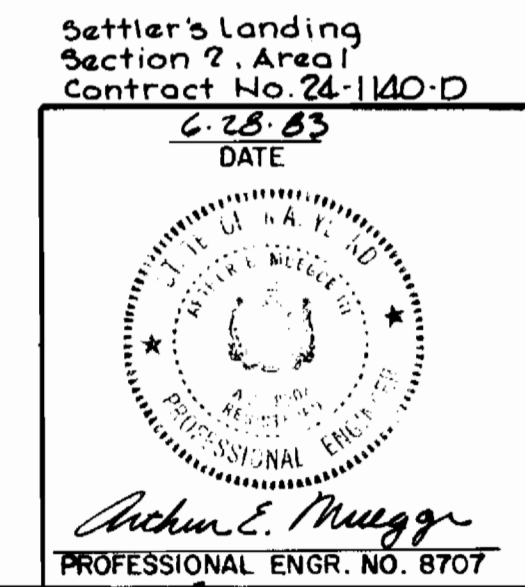
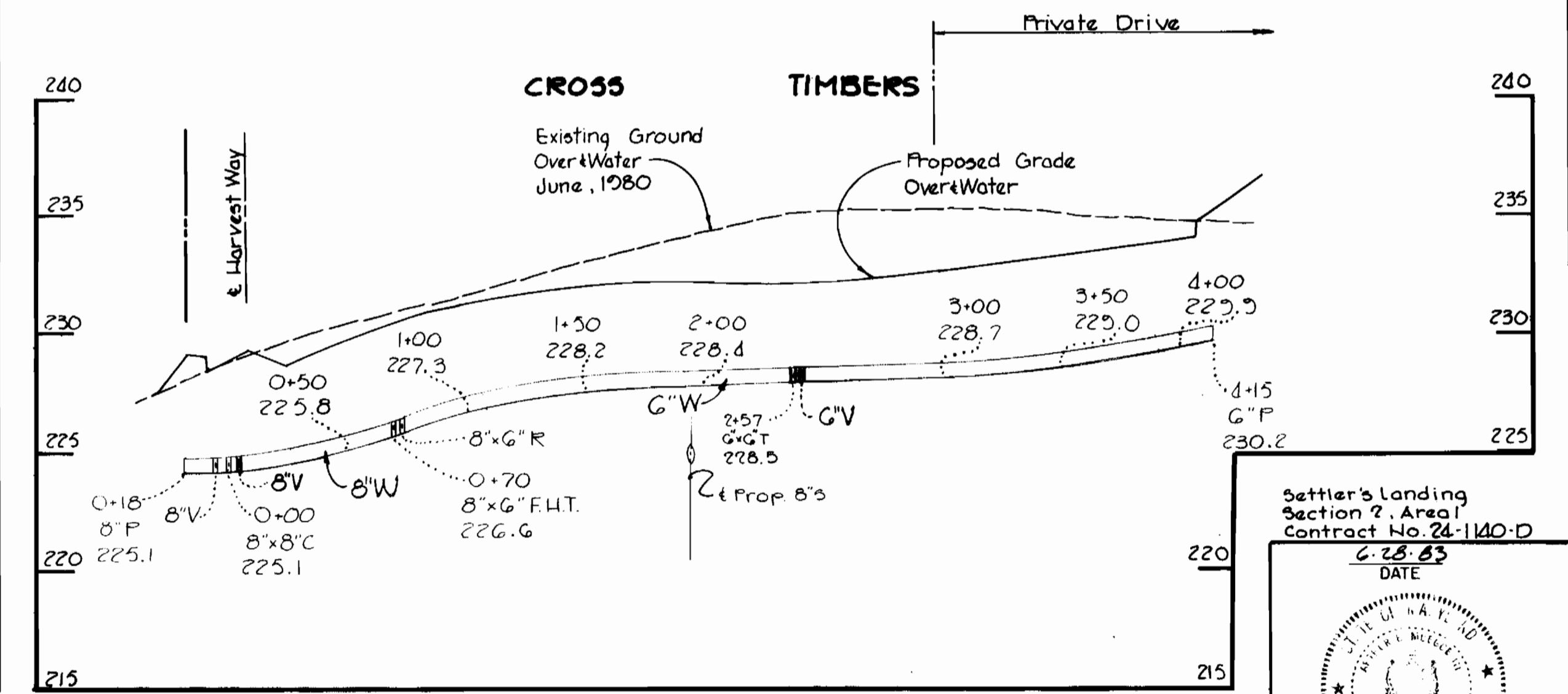
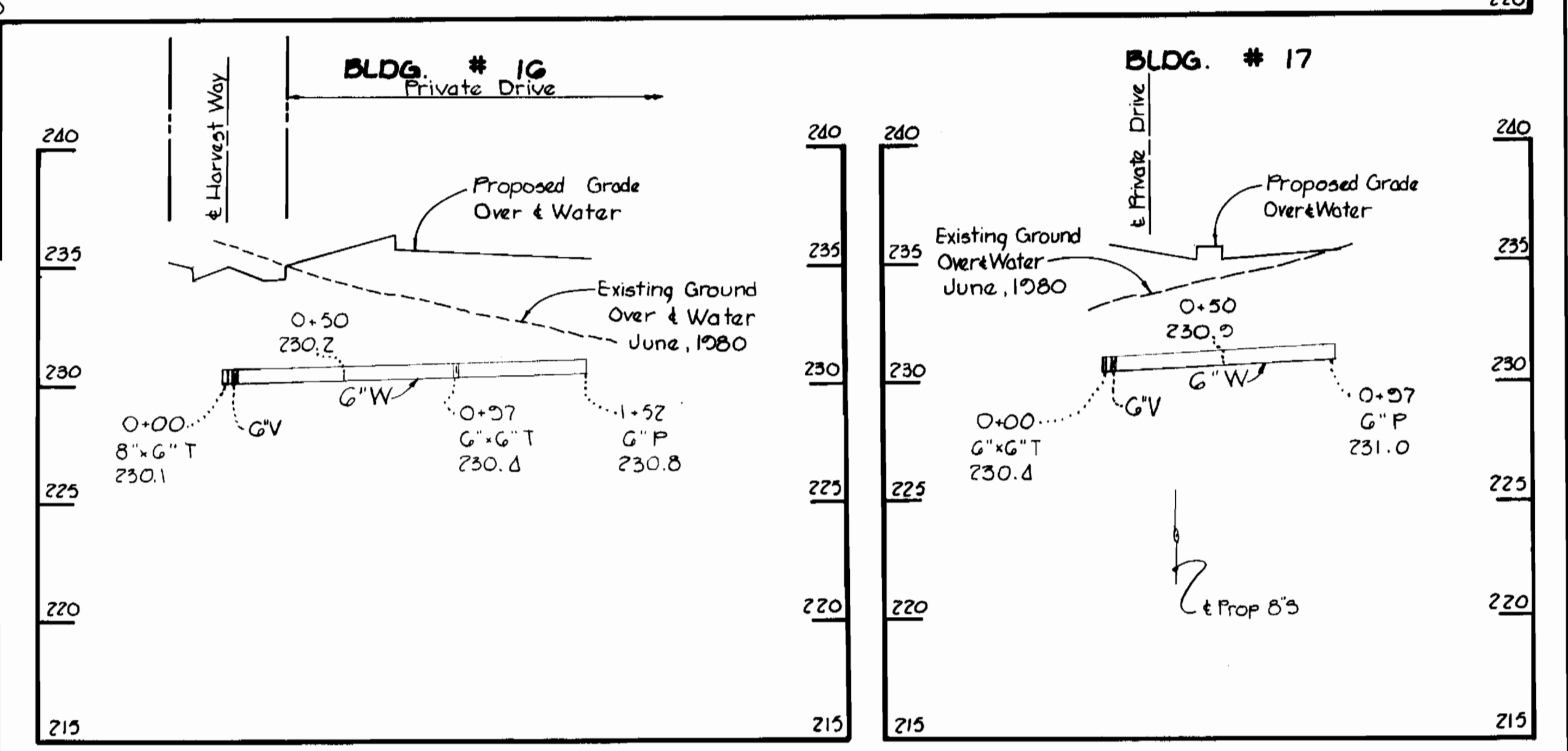
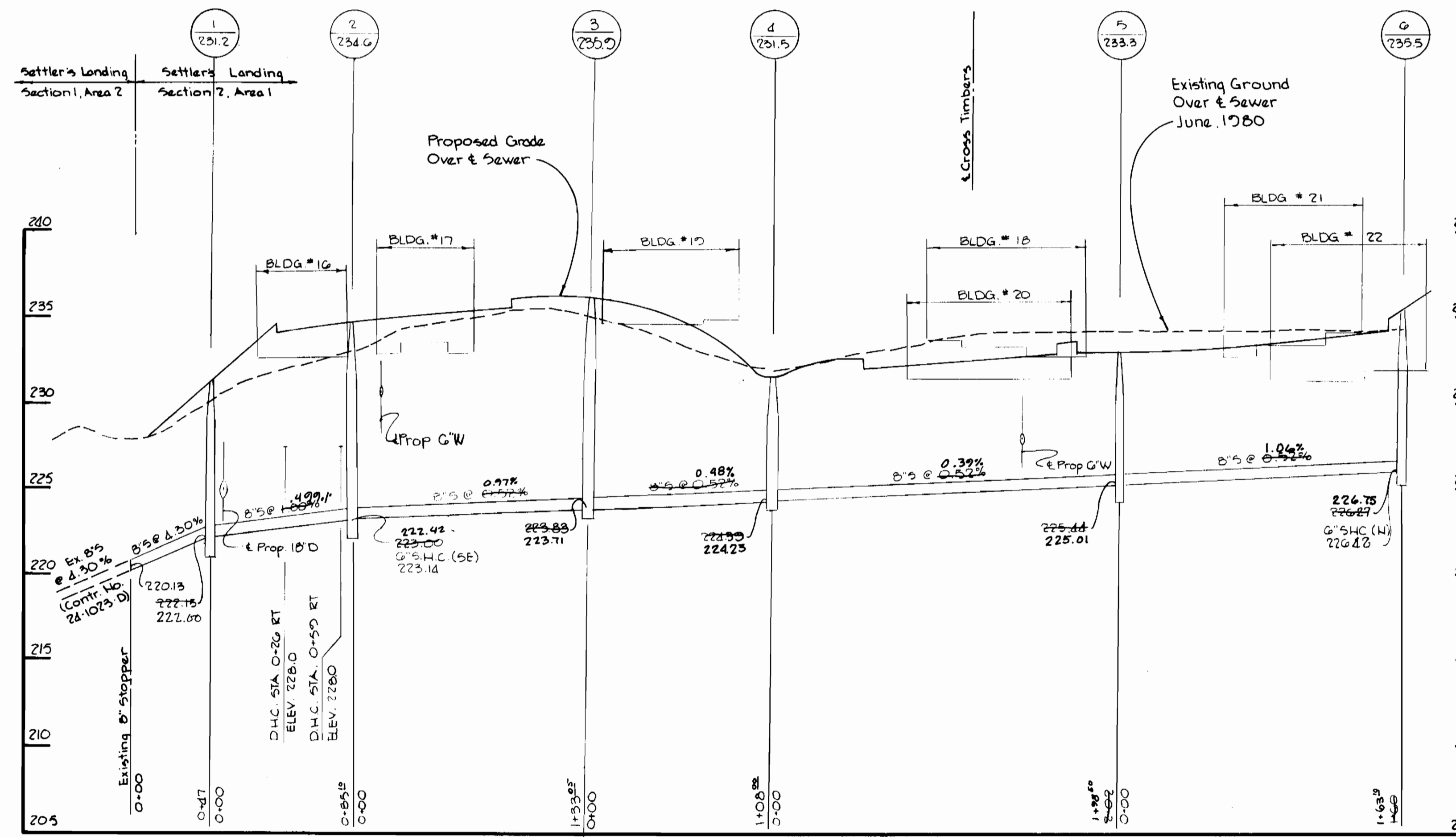
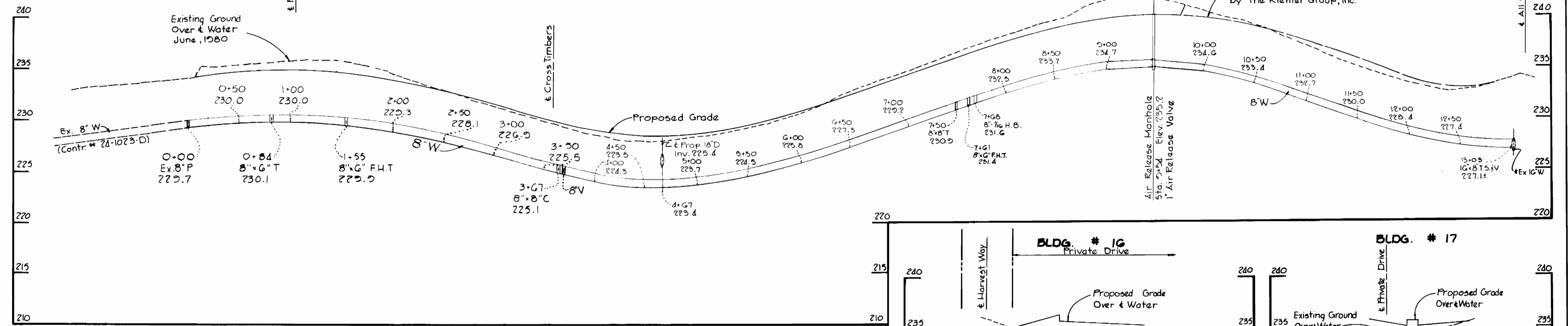
THE RIEMER GROUP, INC.
8659 BALTIMORE NATIONAL PIKE
ELLCOTT CITY, MARYLAND 21043

DRAWING NO. 1 OF 2

SCALE 1"=50'

OCT 27, 1983

HARVEST WAY



<p>THE RIEMER GROUP, INC. 8659 BALTIMORE NATIONAL PIKE ELLCOTT CITY, MARYLAND 21043</p>	<p>DEPARTMENT OF PUBLIC WORKS HOWARD COUNTY, MARYLAND</p> <p><i>Joseph F. Nemy</i> 11-8-83 DIRECTOR OF PUBLIC WORKS - DATE</p> <p><i>Richard M. Binger</i> 11-3-83 CHIEF - BUREAU OF UTILITIES - DATE</p> <p><i>William B. Ray</i> 11-8-83 CHIEF - BUREAU OF ENGINEERING - DATE</p> <p><i>William B. Ray</i> 11-8-83 CHIEF - LAND DEVELOPMENT DIVISION</p>	<p>CONTRACT NO. 24-1140-D</p>	<p>PROFILES OF WATER AND SEWER MAINS</p>	<p>SETTLER'S LANDING SECTION - 2 AREA - 1 6TH ELECTION DISTRICT</p>	<p>DRAWING NO. 2 OF 2</p> <p>SCALE H:V = 50' V:1" = 5'</p>
--	--	-------------------------------	--	---	--

OCT 27, 1983