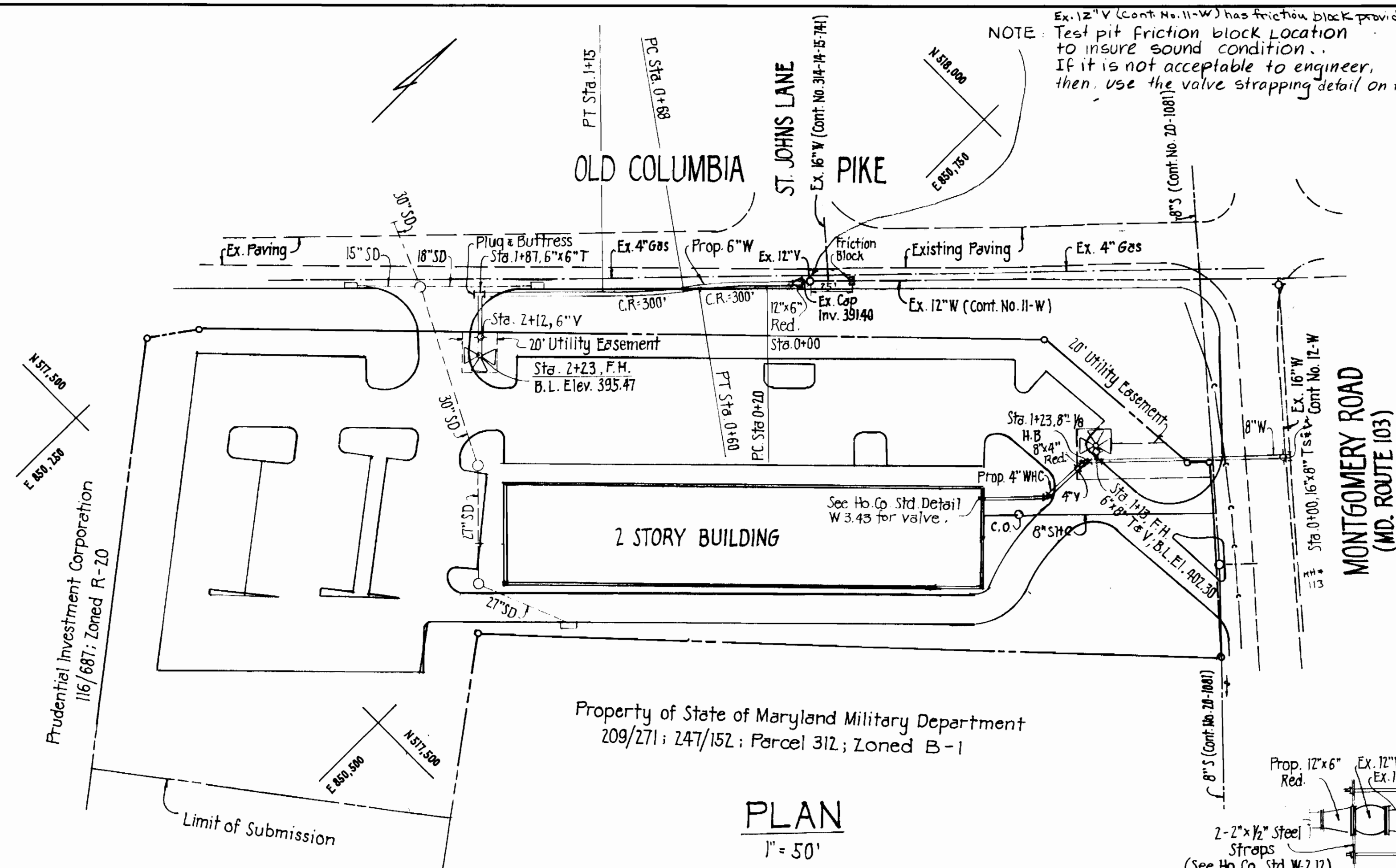
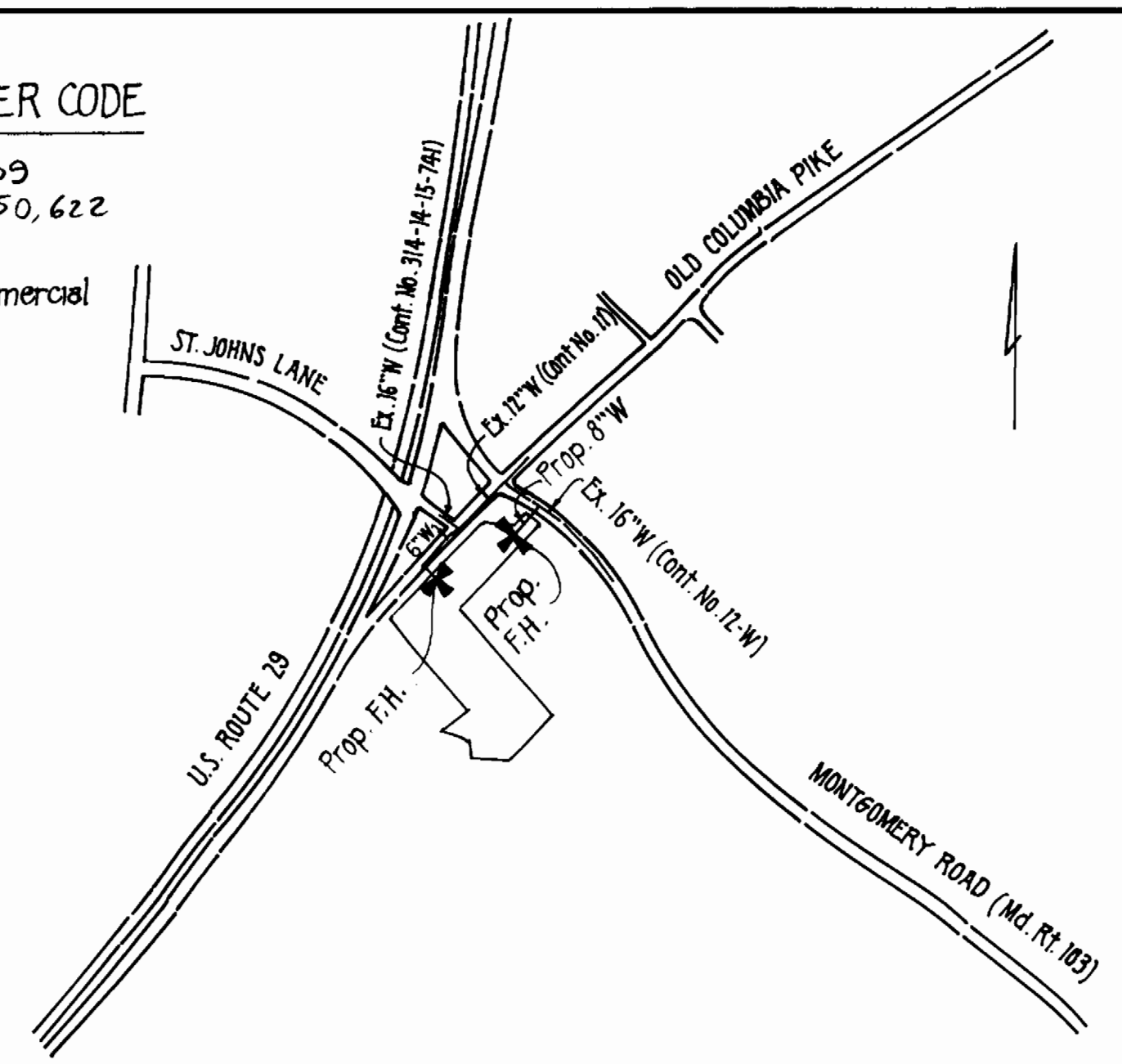


NOTE: Ex. 12" V (Cont. No. 11-W) has friction block provided, sheet 34 of 34 for detail. Test pit friction block location to insure sound condition. If it is not acceptable to engineer, then use the valve strapping detail on this sheet.

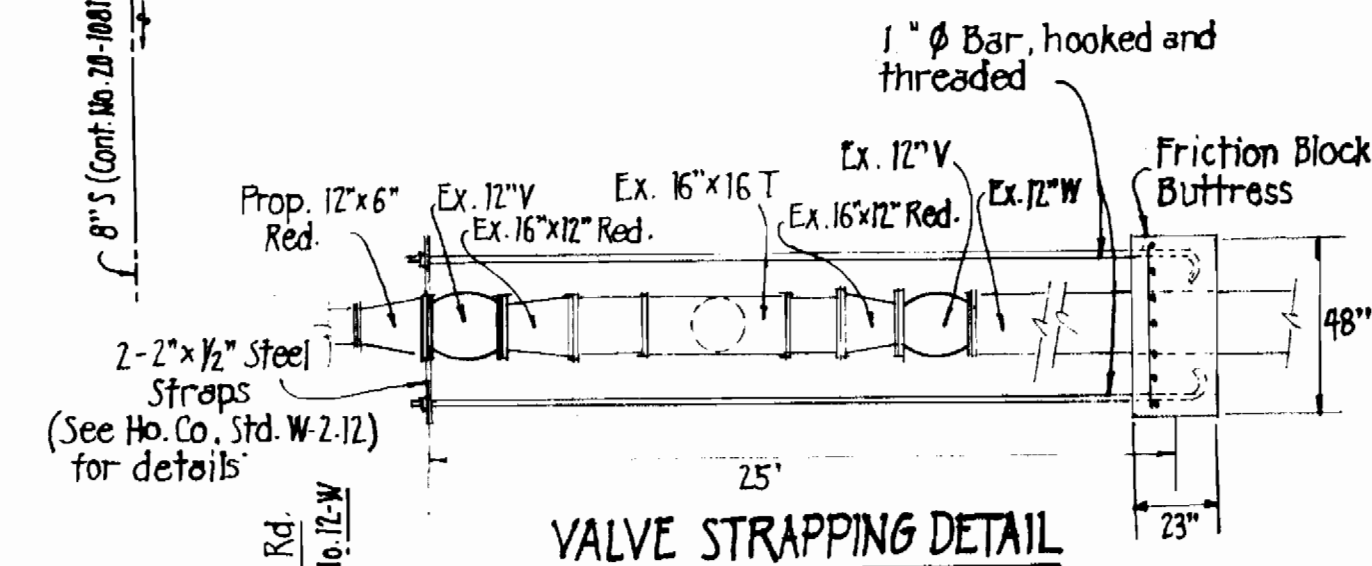
QUANTITY	
ITEM	ESTIMATE
6" Pipe	223 L.F.
8" Pipe	123 L.F.
F.H.	2 EACH
Fric. Block	1 unit
Strap	1 unit
4" Valve	1 EACH
16"x8" T&V	1 unit
8" Valve	1 EACH

WATER & SEWER CODE
 Water No. E-09
 Sewer No. 5,750,622
 No. of Lot - 1
 Type of Bldg. - Commercial
 No. of WHC - 1

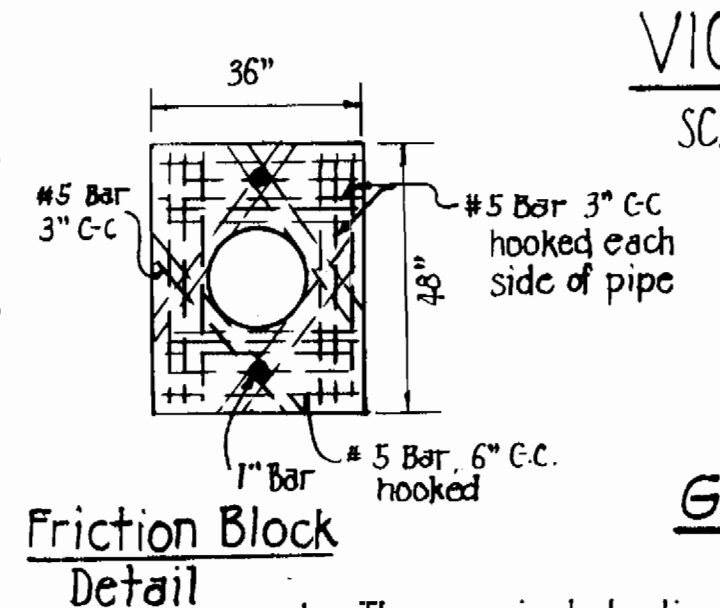


Property of State of Maryland Military Department
 209/271; 247/152; Parcel 312; Zoned B-1

PLAN
 1" = 50'



VALVE STRAPPING DETAIL

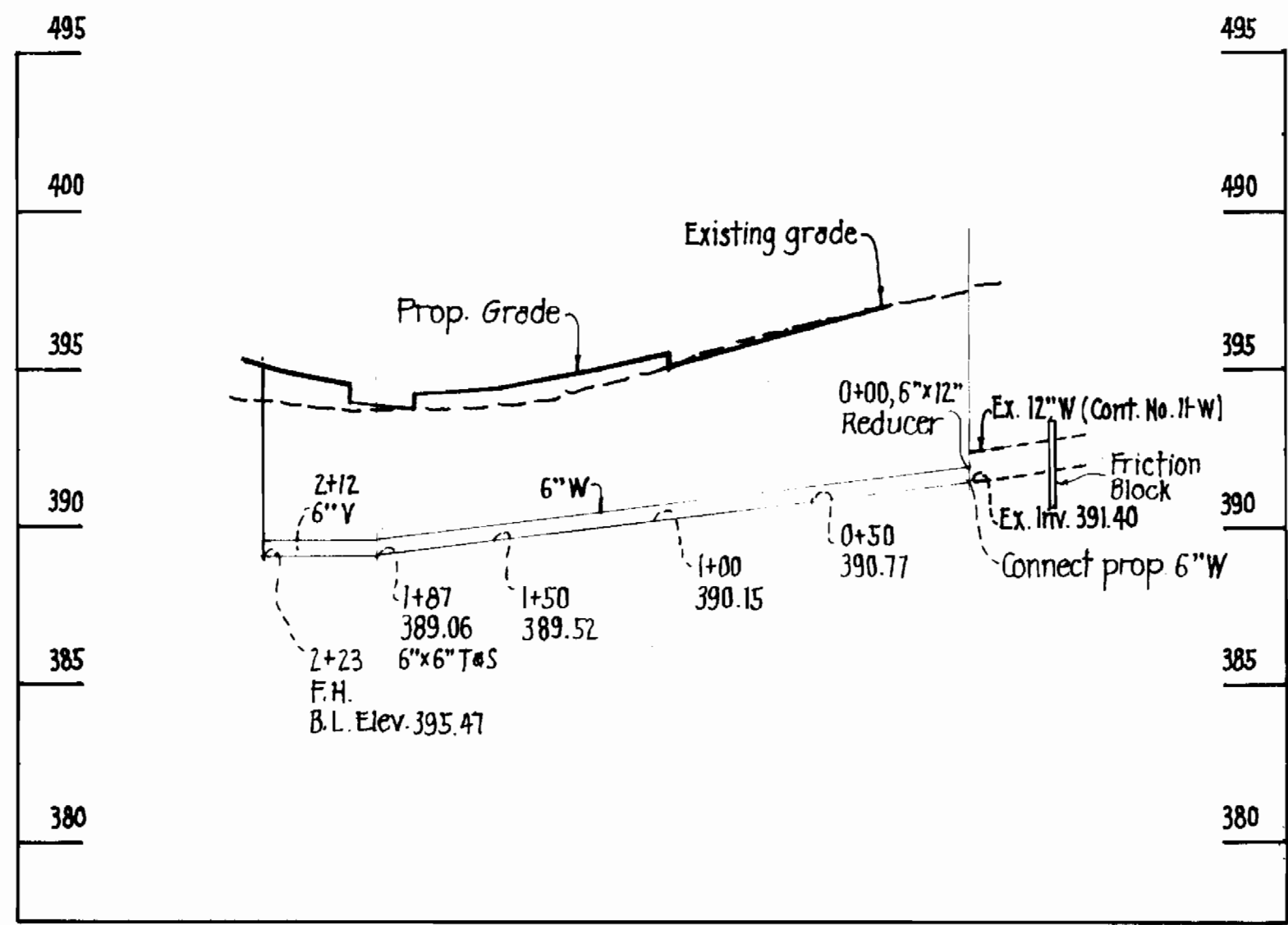


Friction Block Detail

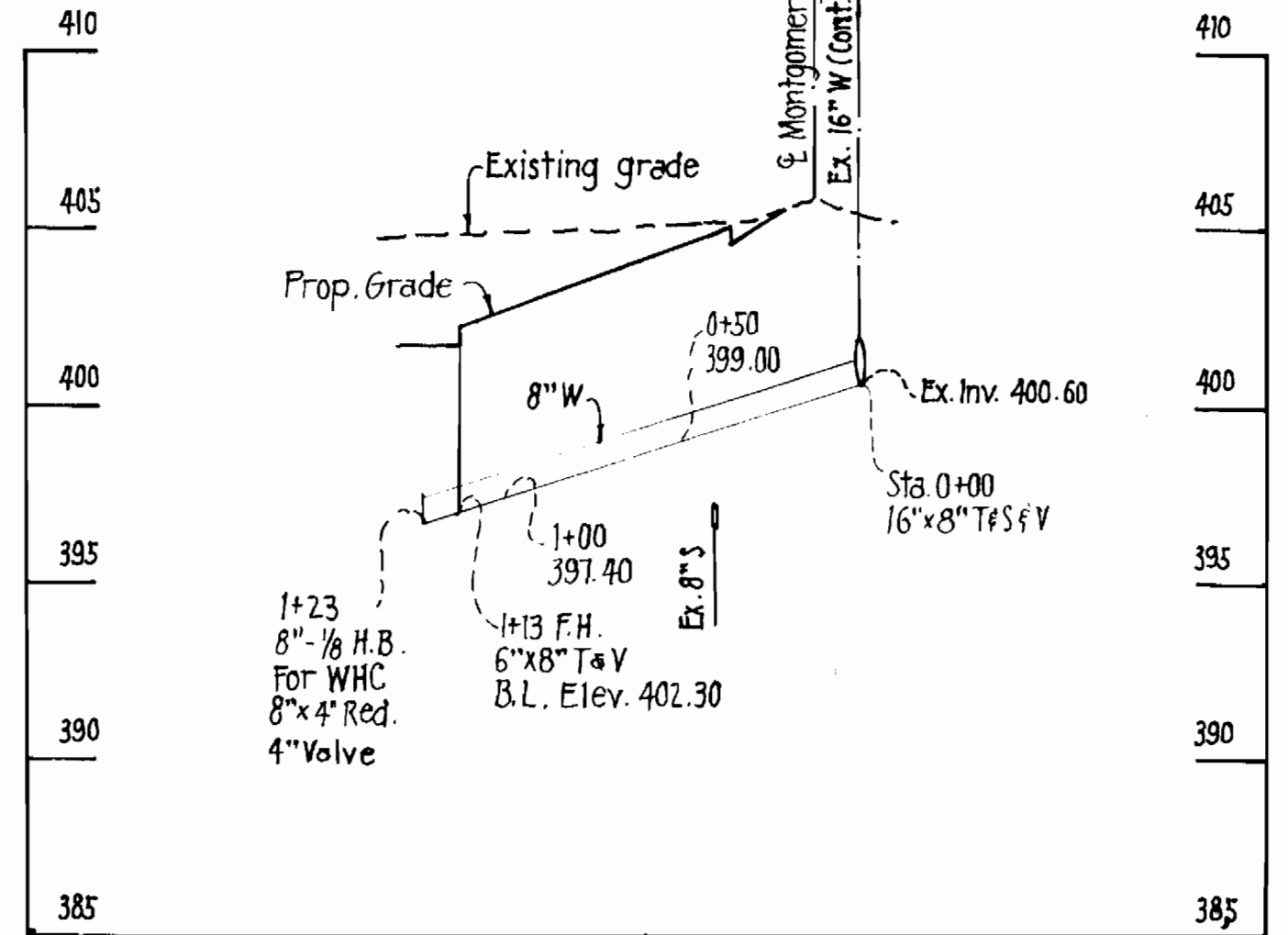
VICINITY MAP
 SCALE: 1" = 600'

GENERAL NOTES

- The approximate location of existing utility is shown. The Contractor shall take all necessary precautions to protect existing utilities and to maintain uninterrupted service. Any damaged incurred due to the Contractor's operation shall be repaired immediately at the Contractor's expense.
- All horizontal controls are based on Md. State Coordinates.
- All vertical controls are based on U.S.G.S. datum.
- All pipe elevations shown are invert elevations.
- All utilities shall be cleared by a min. 6". A utility pole shall be cleared by a min. of 2' or turreted if required. Cost for turreting or bracing poles shall be included in the unit prices bid for excavation and backfill for water mains.
- For all standard details, see standards bound in the specifications.
- The Contractor shall locate existing utilities in advance of construction operations in the vicinity of proposed utilities.
- Notify the Bureau of Utilities, Howard County Phone 992-2366, prior to making any tie on the existing water main.
- The Contractor shall remove tree stumps and roots along the line of excavation as directed by the Engineer. Cost for such removal shall be included in the unit prices bid for excavation and backfill for water main.
- The Contractor shall place regulation "Men Working" and warning signs as required to comply with Md. S.H.A. Manual of Traffic Control for Highway Construction and Maintenance Operations.
- All water mains shall be C.I.P. or D.I.P. unless otherwise noted.
- The top of all water mains shall have a min. of 3'-6" cover unless otherwise noted.
- All valves shall be strapped to the tees in accordance with the standard details.
- All water main fittings shall be buttressed or anchored with conc. in accordance with standard details.
- All fire hydrants shall be strapped to the tees and shall be buttressed with concrete in accordance with the standard details. The cost of strapping fire hydrants and valves shall be included in the unit price bid for furnishing and installing fire hydrants shall be compacted in accordance with Sec. 37.01-3.15 of the standard specifications. Fire hydrant bury line elevation shall be set to the elevations shown on the drawing.
- Water house connection shall be for inside meter settings.
- The Contractor shall notify the following utilities at least (5) days before starting work shown:
 Baltimore Gas and Electric - Underground Electric Distribution - 234-5891; Underground Gas Distribution - 234-5533.
 Miss Utility - 359-0100
 C&P Telephone Co. - 725-9976
 Bureau of Utilities - 992-2366



PROFILE
 Hor. 1" = 50'
 Vert. 1" = 5'



SEDIMENT CONTROL MEASURES FOR THIS CONTRACT WILL BE IMPLEMENTED IN ACCORDANCE WITH ART. NO. 15 OF THE HOWARD COUNTY STANDARD SPECIFICATIONS AND AS PER SITE DEVELOPMENT PLAN NO. 81-82.

HOWARD SOIL CONSERVATION DISTRICT:
 REVIEWED FOR HOWARD SOIL CONSERVATION DISTRICT AND MEETS TECHNICAL REQUIREMENTS:
 James M. Helms 8-23-83
 U.S. SOIL CONSERVATION SERVICE DATE
 THIS PLAN IS APPROVED FOR SOIL EROSION AND SEDIMENT CONTROL BY THE HOWARD SOIL CONSERVATION DISTRICT
 [Signature] 8-23-83
 HOWARD SOIL CONSERVATION DISTRICT DATE



Revision: Relocated 8" SHC - AMT 6-27-85

DEPARTMENT OF PUBLIC WORKS
 HOWARD COUNTY, MARYLAND
 Director of Public Works: [Signature] 10-1-83
 Chief - Bureau of Utilities: Robert M. Bringer 9-2-83
 Chief - Bureau of Engineering: [Signature] 8-24-83
 Chief - Land Development Division: [Signature] 9-6-83

PURDUM & JESCHKE
 ENGINEERS
 1023 N. CALVERT ST.
 BALTIMORE, MARYLAND

CONTRACT NO. 44-1139-D

PLAN & PROFILE
 WATER MAIN EXTENSION

PRUDENTIAL INVESTMENT CO.
 2ND ELECTION DISTRICT
 HOWARD CO., MARYLAND

DRAWING NO. 1 OF 1
 SCALE AS SHOWN
 DRW: ART
 DES: ART
 CHD: ART