

BENCH MARKS

B.M.#1 ELEV. 220.04
 TOP RIM ELEVATION OF EX. SAN. MANHOLE #610
 B.M.#2 ELEV. 224.22
 R.D. SPIKE SET 10' OFF E. WHISKEY BOTTOM ROAD, 42' SOUTHEAST OF C.P.#12

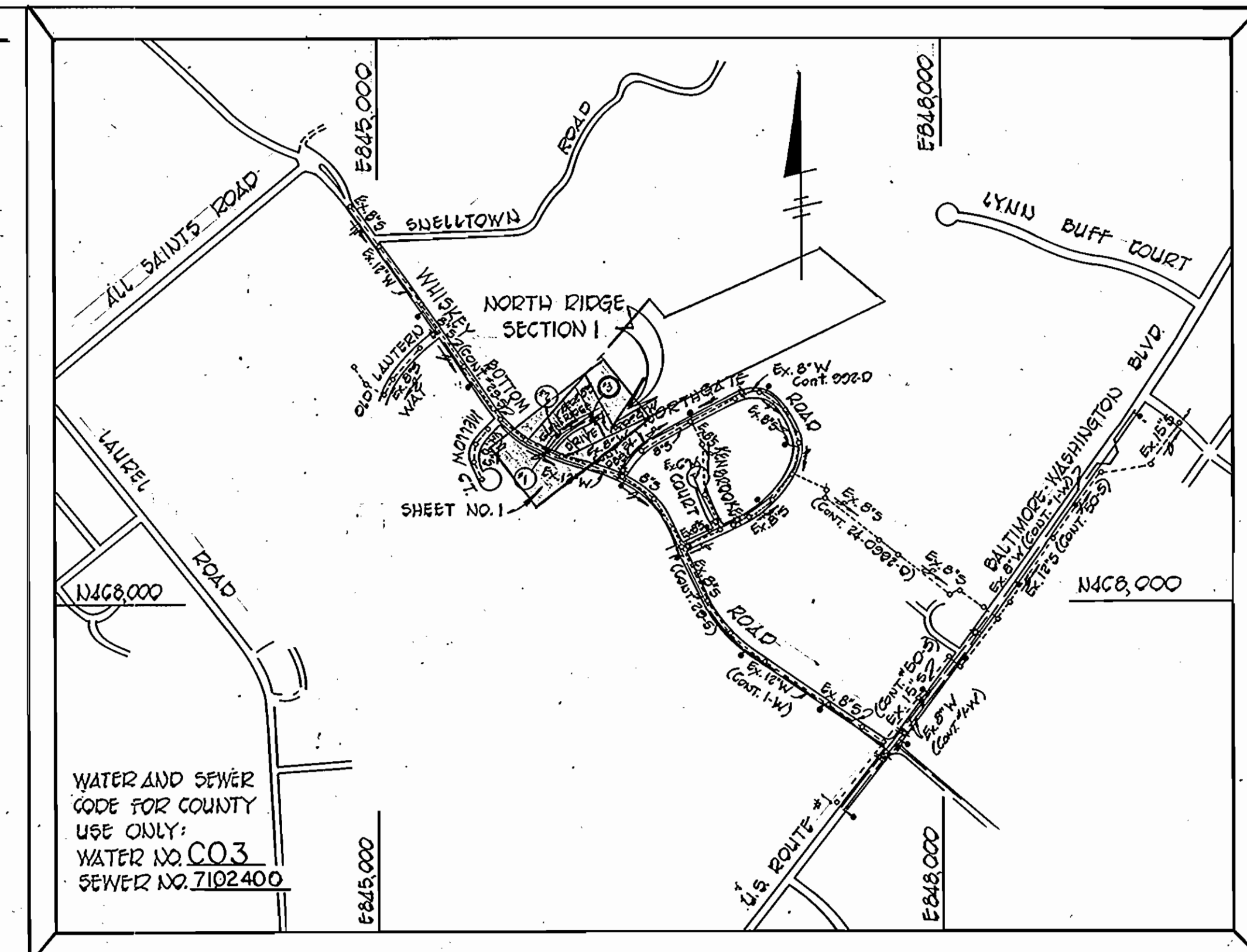
MINIMUM SEWER SERVICE ELEVATIONS

LOT 2	280.3
LOT 3	281.1
LOT 4	281.1
LOT 5	280.5
LOT 6	280.7
LOT 7	281.4
LOT 8	281.4
LOT 9	280.0

SEWER HOUSE CONNECTION

INVERT ELEVATIONS AT PROPERTY LINE

STATION	LOT	INVERT
M1 TO M2		
0+00 RT.	LOT 9	275.72
M2 TO M3	LOT 2	275.00
M3 TO M4		
M4 TO M5	LOT 2	275.08
1+00 LT.	LOTS 3/4	276.00
1+00 RT.	LOTS 7/8	277.12
M5 TO M6	LOT 5	277.27
M6 TO M7	LOT 6	277.52



WATER AND SEWER CODE FOR COUNTY USE ONLY:
 WATER NO. C03
 SEWER NO. 7102400

VICINITY MAP
 SCALE: 1" = 600'

TYPE OF BUILDING: SINGLE FAMILY
 NO. OF LOTS: 22 BUILDABLE LOTS
 NO. OF WATER HOUSE CONN.: 2
 NO. OF SEWER HOUSE CONN.: 2
 DRAINAGE AREA: LITTLE PATUXENT

GENERAL NOTES

- APPROXIMATE LOCATION OF EXISTING MAINS ARE SHOWN. THE CONTRACTOR SHALL TAKE ALL NECESSARY PRECAUTIONS TO PROTECT EXISTING MAINS AND SERVICES AND MAINTAIN UNINTERRUPTED SUPPLY. ANY DAMAGE INCURRED SHALL BE REPAIRED IMMEDIATELY TO THE SATISFACTION OF THE ENGINEER, AT THE CONTRACTOR'S EXPENSE.
- ALL HORIZONTAL CONTROLS ARE BASED ON MARYLAND STATE COORDINATES.
- ALL VERTICAL CONTROLS ARE BASED ON U.S.C. & G.S. DATUM.
- ALL PIPE ELEVATIONS SHOWN ARE INVERT ELEVATIONS.
- CLEAR ALL UTILITIES BY A MINIMUM OF 6". CLEAR ALL POLES BY 2'-0" MINIMUM OR TUNNEL AS REQUIRED. ANY COST INCURRED TO THE CONTRACTOR FOR TUNNELING OR BRACING AT POLES SHALL BE INCLUDED IN THE UNIT PRICES BID FOR CONSTRUCTION OF THE MAIN.
- FOR DETAILS NOT SHOWN ON THE DRAWINGS USE HOWARD COUNTY STANDARD DETAILS.
- FOR MATERIALS AND CONSTRUCTION METHODS USE HOWARD COUNTY STANDARD SPECIFICATIONS.
- CONTRACTOR SHALL LOCATE EXISTING UTILITIES A MINIMUM OF TWO (2) WEEKS IN ADVANCE OF CONSTRUCTION OPERATIONS IN THE VICINITY OF PROPOSED UTILITIES AT HIS OWN EXPENSE.
- CONTRACTOR SHALL NOTIFY THE FOLLOWING UTILITIES OR AGENCIES AT LEAST FIVE (5) WORKING DAYS BEFORE STARTING WORK SHOWN ON THESE PLANS:
 BALTIMORE GAS AND ELECTRIC CO. - UNDERGROUND ELECTRIC DISTRIBUTION
 CUSTOMER SERVICE - (685-0123)
 BALTIMORE GAS AND ELECTRIC CO. - UNDERGROUND GAS DISTRIBUTION
 CUSTOMER SERVICE - (685-0123)
 ENGINEERING - "DAMAGE CONTROL" - (234-5621)
 "MISS UTILITY" - (1-559-0100)
 CHESAPEAKE AND POTOMAC TELEPHONE COMPANY - (725-9976)
 BUREAU OF UTILITIES, HOWARD COUNTY - (992-2566)
- TREES ARE TO BE PROTECTED FROM DAMAGE TO MAXIMUM EXTENT. TREES LOCATED WITHIN THE CONSTRUCTION STRIP ARE NOT TO BE REMOVED OR DAMAGED BY THE CONTRACTOR.
- CONTRACTOR SHALL REMOVE TREES, STUMPS AND ROOTS ALONG LINE OF EXCAVATION AS DIRECTED BY THE ENGINEER. PAYMENT FOR SUCH REMOVAL SHALL BE INCLUDED IN THE UNIT PRICE BID FOR THE CONSTRUCTION OF THE MAIN.
- PLACE REGULATION "MEN WORKING" AND WARNING SIGNS AS REQUIRED TO COMPLY WITH MARYLAND STATE HIGHWAY ADMINISTRATION MANUAL OF TRAFFIC CONTROL FOR HIGHWAY CONSTRUCTION AND MAINTENANCE OPERATION.
- ALL WATER MAINS TO BE C.I.P., D.I.P. OR P.C.C.P. UNLESS OTHERWISE NOTED.
- TOP OF ALL WATER MAINS SHALL HAVE A MINIMUM OF 3'-6" COVER UNLESS OTHERWISE NOTED.
- VALVES ADJACENT TO TEES SHALL BE STRAPPED TO TEES.
- BLOCK ALL FITTINGS WITH CONCRETE.
- BURY LINE ELEVATIONS ON FIRE HYDRANTS SHALL BE SET TO THE ELEVATIONS SHOWN ON THE DRAWINGS. ALL FIRE HYDRANTS SHALL BE STRAPPED AND BUTTRESSED WITH CONCRETE IN ACCORDANCE WITH STANDARD DETAILS. SOIL AROUND THE FIRE HYDRANTS TO BE COMPACTED IN ACCORDANCE WITH SECTION 37.01 AND 37.05 OF THE STANDARD SPECIFICATIONS.
- ALL WATER HOUSE CONNECTIONS SHALL BE FOR AN INSIDE METER SETTING.
- THE CONTRACTOR SHALL NOT OPERATE ANY WATER MAIN VALVES ON THE EXISTING SYSTEM.
- ALL SEWER MAINS SHALL BE C.S.P.X., V.C.P.X., A.C.P. CLASS 2400 OR PVC UNLESS OTHERWISE NOTED.
- THE CONTRACTOR SHALL PROVIDE A JOINT IN ALL SEWER MAINS WITHIN 2'-0" OF EXTERIOR MANHOLE WALL.
- ALL MANHOLE SHALL BE 4'-0" INSIDE DIAMETER, UNLESS OTHERWISE NOTED.
- MANHOLES SHOWN WITH 12" AND 16" WALLS ARE BRICK MANHOLES ONLY.
- WATER MAIN AND WATER HOUSE CONNECTION LINE MUST BE PLACED SO AS TO HAVE AT LEAST ONE (1) FOOT SEPARATION FROM THE SEWER MAIN OR SEWER HOUSE CONNECTION AS THEY PASS ABOUT IT.
- FOR ALL COPPER WATER HOUSE CONNECTIONS, UTILIZE FLARED TYPE FITTINGS ONLY.

QUANTITIES

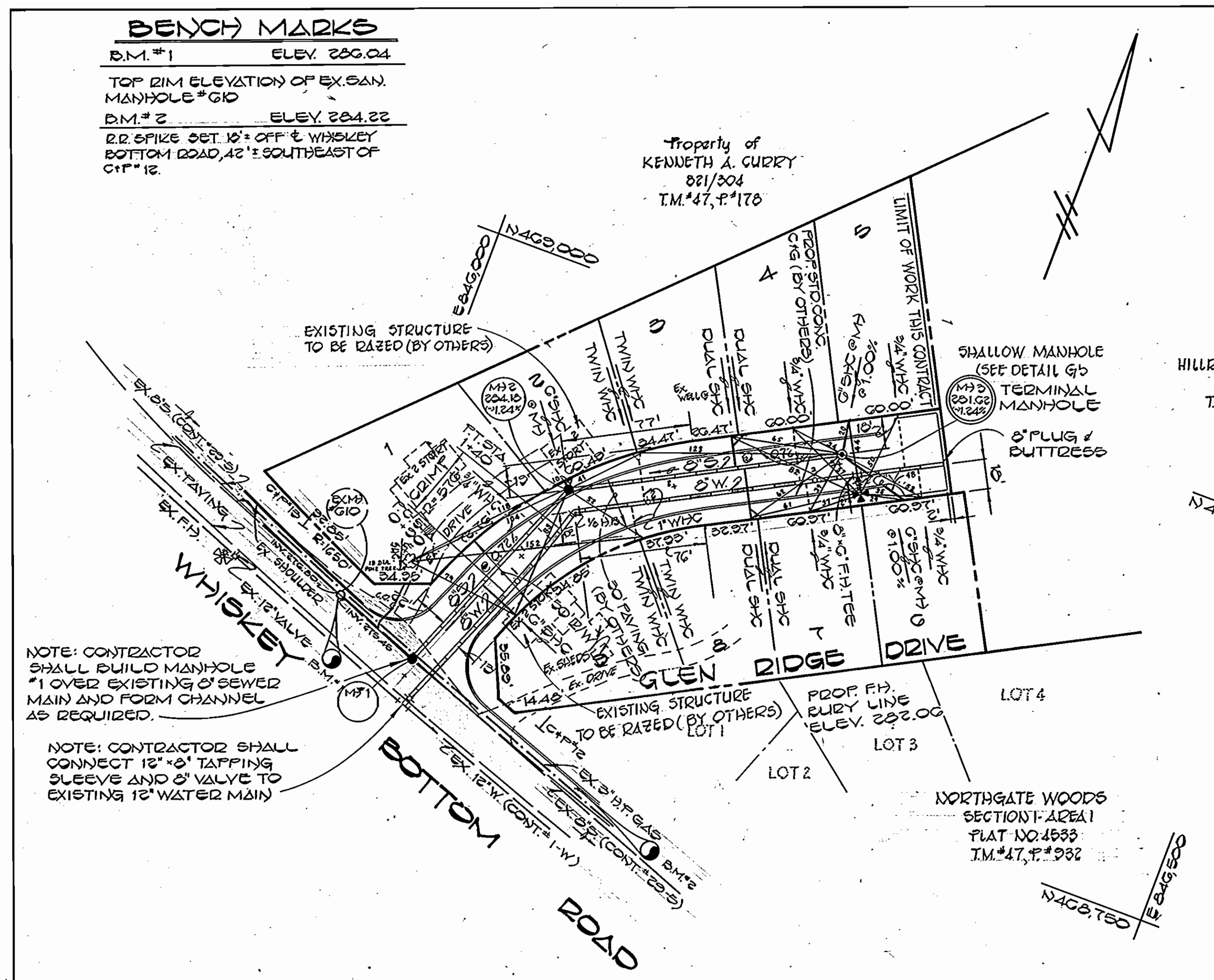
ITEM	EST'D	AS-BUILT	SUPPLIED
8" SEWER	201 L.F.		
8" SEWER	108 L.F.		
MANHOLE	2 EA.		
8" WATER	374 L.F.		
8" WATER	10 L.F.		
FIRE HYD.	1 EA.		
1" W/C	45 L.F.		
3/4" W/C	150 L.F.		
12" TAPPING SLEEVE 18" V.	1 EA.		

SEDIMENT CONTROL MEASURES FOR THIS CONTRACT WILL BE IMPLEMENTED IN ACCORDANCE WITH THE PROVISIONS OF THESE SPECIFICATIONS AND ALSO AS SHOWN ON THE GRADING AND SEDIMENT CONTROL PLAN F-83-119 REVIEWED FOR HOWARD COUNTY SOIL CONSERVATION DISTRICT AND MEETS TECHNICAL REQUIREMENTS

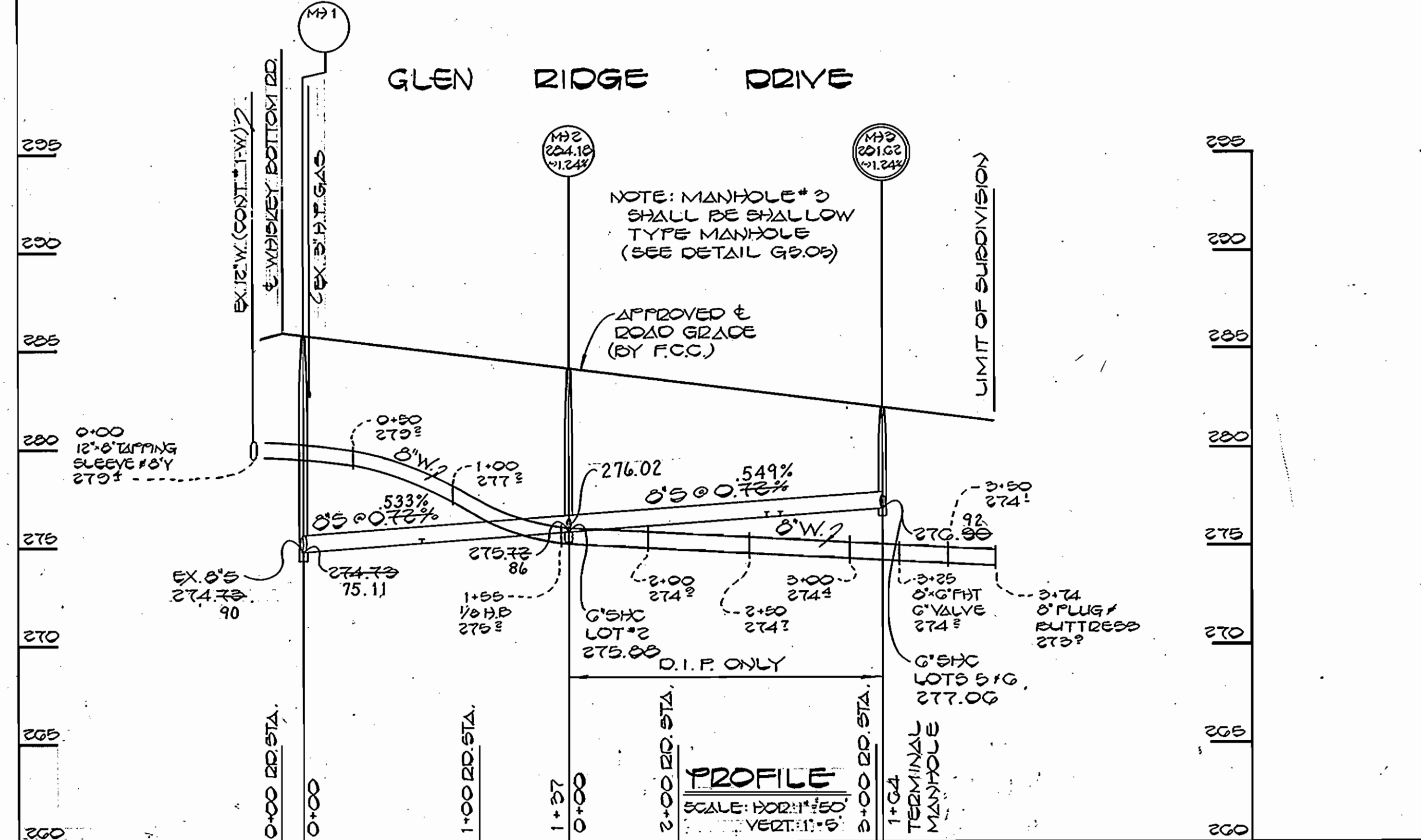
James M. [Signature] 7-22-83
 U.S. SOIL CONSERVATION SERVICE DATE

THIS DEVELOPMENT IS APPROVED FOR EROSION AND SEDIMENT CONTROL BY THE HOWARD COUNTY SOIL CONSERVATION DISTRICT.

[Signature] 7-22-83
 HOWARD COUNTY SOIL CONSERVATION DISTRICT DATE



PLAN
 1" = 50'



PROFILE
 SCALE: HOR: 1" = 50'
 VERT: 1" = 5'

DEPARTMENT OF PUBLIC WORKS
 HOWARD COUNTY, MARYLAND

John F. [Signature] 8-3-83
 DIRECTOR OF PUBLIC WORKS DATE

Robert M. [Signature] 7-27-83
 CHIEF, BUREAU OF UTILITIES DATE

[Signature] 8-3-83
 CHIEF, BUREAU OF ENGINEERING DATE

[Signature] 7-27-83
 CHIEF, LAND DEVELOPMENT DIVISION DATE

FISHER, COLLINS AND CARTER, INC.
 CONSULTING ENGINEERS AND LAND SURVEYORS
 8388 COURT AVENUE
 ELLICOTT CITY, MARYLAND 21043

STATE OF MARYLAND
 TERRILL A. FISHER
 REGISTERED PROFESSIONAL ENGINEER

DES: D.B.S.
 DRN: D.B.S.
 CHK: T.A.F.
 DATE: 6/9/83

BY	NO.	REVISION	DATE

PLAN AND PROFILE
 WATER AND SEWER MAIN

NORTH RIDGE SUBDIVISION
 SECTION ONE

CONTRACT NO. 24-1132-D
 SIXTH ELECTION DISTRICT
 HOWARD COUNTY, MARYLAND

SCALE AS SHOWN
 SHEET 1 OF 1