

Waste Water Disposal: Sewage
 Type of Buildings: Townhouses
 No. of SMC: 75
 No. of WMC: 75
 No. of Lots: 75

WATER & SEWER CODE
 County Use:
 Water: E-14
 Sewer: 5201900

QUANTITIES			
ITEM	BID	AS-BUILT	MATERIAL/SUPPLIER
8" Sewer L.F.	1833 LF	1745 LF.	AAA WATERWORKS NORTHSTAR P.V.C.
Manholes Ea.	10	11	ATLANTIC CONC. PRECAST CONC.
8" Water L.F.	1309 LF	1325 LF.	AAA WATERWORKS GRIFFIN D.I.P.
8" Valves Ea.	4	4	AAA WATERWORKS
6" Water L.F.	347 LF	388 LF.	AAA WATERWORKS GRIFFIN D.I.P.
6" V. (Excluding F.H.V.)	2	2	AAA WATERWORKS
Fire Hydrants Ea.	2	2	DRESSER
6" Fire Hydrant Valve	1	1	AAA WATERWORKS
W.H.C.	250' 1" 252' 3/4"	678' 1" 1218' 2"	AAA WATERWORKS
S.H.C. (6")	2,170 LF	2476 LF.	AAA WATERWORKS NORTHSTAR P.V.C.

GENERAL NOTES

- Approximate location of existing mains are shown. The contractor shall take all necessary precautions to protect existing mains and services and maintain uninterrupted supply. Any damage incurred shall be repaired immediately to the satisfaction of the engineer, at the contractor's expense.
- All horizontal controls are based on Maryland state coordinates.
- All vertical controls are based on U.S.G.S. Datum.
- All pipe elevations shown are invert elevations.
- Clear all utilities by a minimum of 6'. Clear all poles by 2'-0" minimum or tunnel as required. Any cost incurred to the contractor for tunneling or bracing at poles shall be included in unit prices bid for construction of the main.
- For details not shown on the drawings, use Howard County Standard Details.
- For materials and construction methods use Howard County Standard Specifications.
- Contractor shall locate existing utilities a minimum of two (2) weeks in advance of construction operations in the vicinity of proposed utilities at his own expense.
- Contractor shall notify the following utilities or agencies at least five (5) working days before starting work shown on these plans:
 State Highway Administration - 531-5533
 Baltimore Gas & Electric Company - Underground Electric Distribution Customer Service - 685-0123.
 Baltimore Gas & Electric Company - Underground Gas Distribution Customer Service - 685-0123.
 Engineering - "Damage Control" - 234-5621.
 "Miss Utility" - 1-555-0100.
 Chesapeake and Potomac (C&P) Telephone Company - 725-9976.
 American Telephone and Telegraph - Cable Location Division - 393-3553.
 Colonial Pipeline Company - 781-4641.
 Bureau of Utilities Howard County - 992-2366.
- Trees are to be protected from damage to maximum extent. Trees located within the construction strip are not to be removed or damaged by the contractor.
- Contractor shall remove trees, stumps, and roots along the line of excavation as directed by the engineer. Payment for such removal shall be included in the unit price bid for construction of the main.
- Place regulation "men working" and warning signs as required to comply with Maryland State Highway Administration Manual of Traffic Control for Highway Construction and Maintenance Operations.
- All water mains shall be C.I.P. or D.I.P. unless otherwise noted.
- Top of all water mains shall have a minimum of 3'-1/2' cover unless otherwise noted.
- Valves adjacent to trees shall be strapped to trees.
- Block all fittings with concrete.
- Bury line elevations on fire hydrants shall be set to the elevations shown on the drawings. All fire hydrants shall be strapped and buttressed with concrete in accordance with standard details. Soil around the fire hydrant to be compacted in accordance with Sections 37.01 and 37.05 of the standard specifications.
- All water house connections shall be for an inside meter setting.
- The contractor shall not operate any water main valves on the existing system.
- All sewer mains shall be C.S.P.X., R.C.S.P., V.C.R.X., A.C.P. Class 2400 or PVC unless otherwise noted.
- The contractor shall provide a joint in all sewer mains within 2'-0" of exterior manhole wall.
- All manholes shall be 4'-0" inside diameter, unless otherwise noted.
- Manholes shown with 12" and 16" walls are brick manholes only.
- Manholes designated W.T. in plan and profile shall have watertight frame and covers, Standard Detail 81.45.
- For all copper water house connections, utilize flared type fittings only.

CONTRACT NO. 24-1124-D
OAK VIEW VILLAGE
HOWARD COUNTY, MARYLAND
DEPARTMENT OF PUBLIC WORKS

SEDIMENT CONTROL MEASURES FOR THIS CONTRACT WILL BE IMPLEMENTED IN ACCORDANCE WITH ARTICLE 15 OF THE STANDARD SPECIFICATIONS (E-83-135)

REVIEWED FOR HOWARD SOIL CONSERVATION DISTRICT AND MEETS TECHNICAL REQUIREMENT

James M. [Signature] 10-14-83
 SIGNATURE DATE
 U.S. SOIL CONSERVATION SERVICE

THIS DEVELOPMENT PLAN IS APPROVED FOR SOIL EROSION AND SEDIMENT CONTROL BY HOWARD CO. CONSERVATION DISTRICT

APPROVED:
[Signature] 10-14-83
 HOWARD S.C.D. DATE

REVISIONS		
Date	Description	By
Nov 10 83	add 25' D's & 1 MH to quantities	mbk
5-15-84	Moved MH 1-C South 20'	sr

DEPARTMENT OF PUBLIC WORKS
 HOWARD COUNTY, MARYLAND

[Signature] 10-25-83
 CHIEF - BUREAU OF ENGINEERING DATE

[Signature] 10-27-83
 CHIEF - BUREAU OF UTILITIES DATE

[Signature] 10-27-83
 CHIEF - LAND DEVELOPMENT DIVISION DATE

IPDS 802 Sligo Avenue
 Silver Spring, Md. 20910
 (301) 585-5676

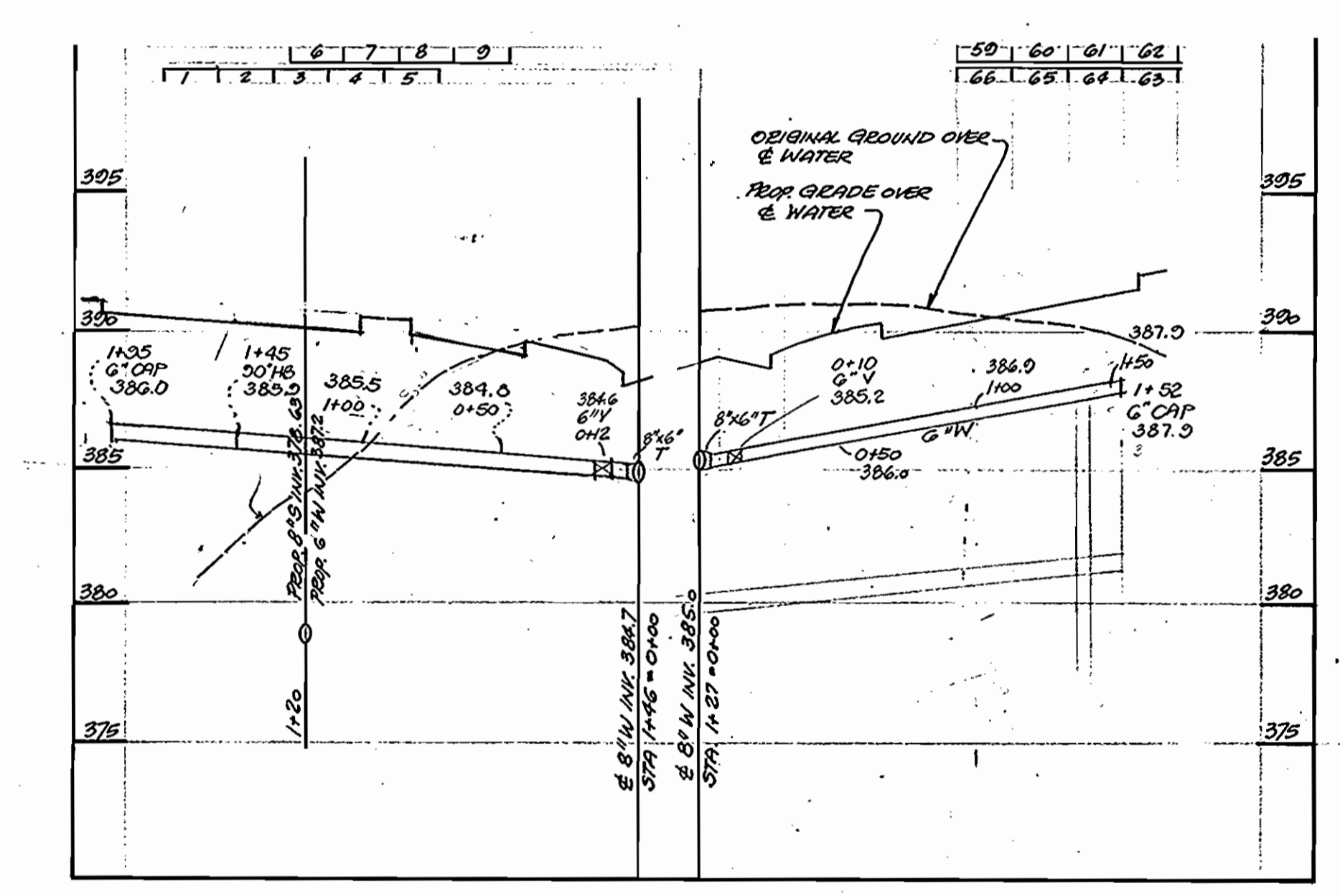
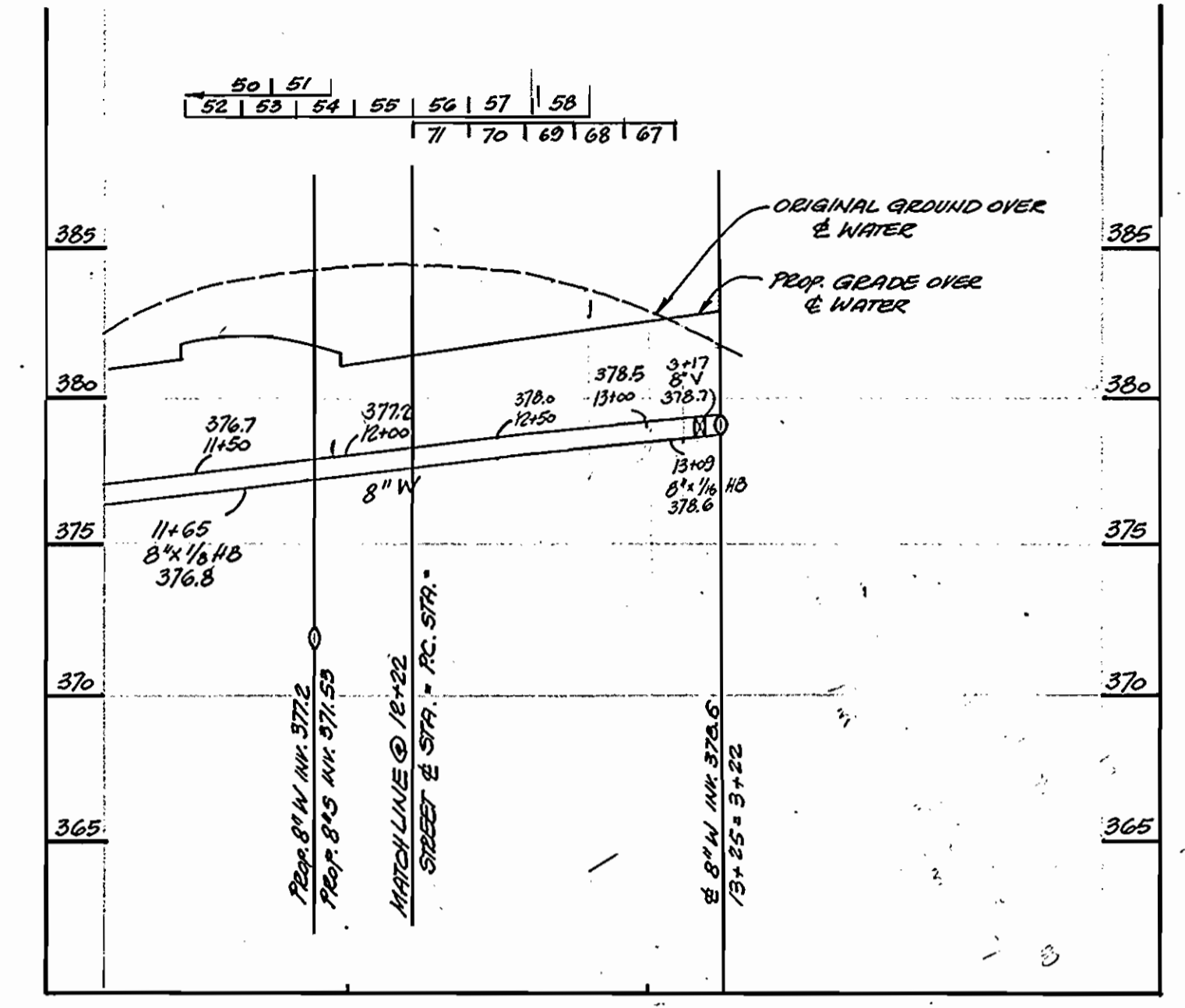
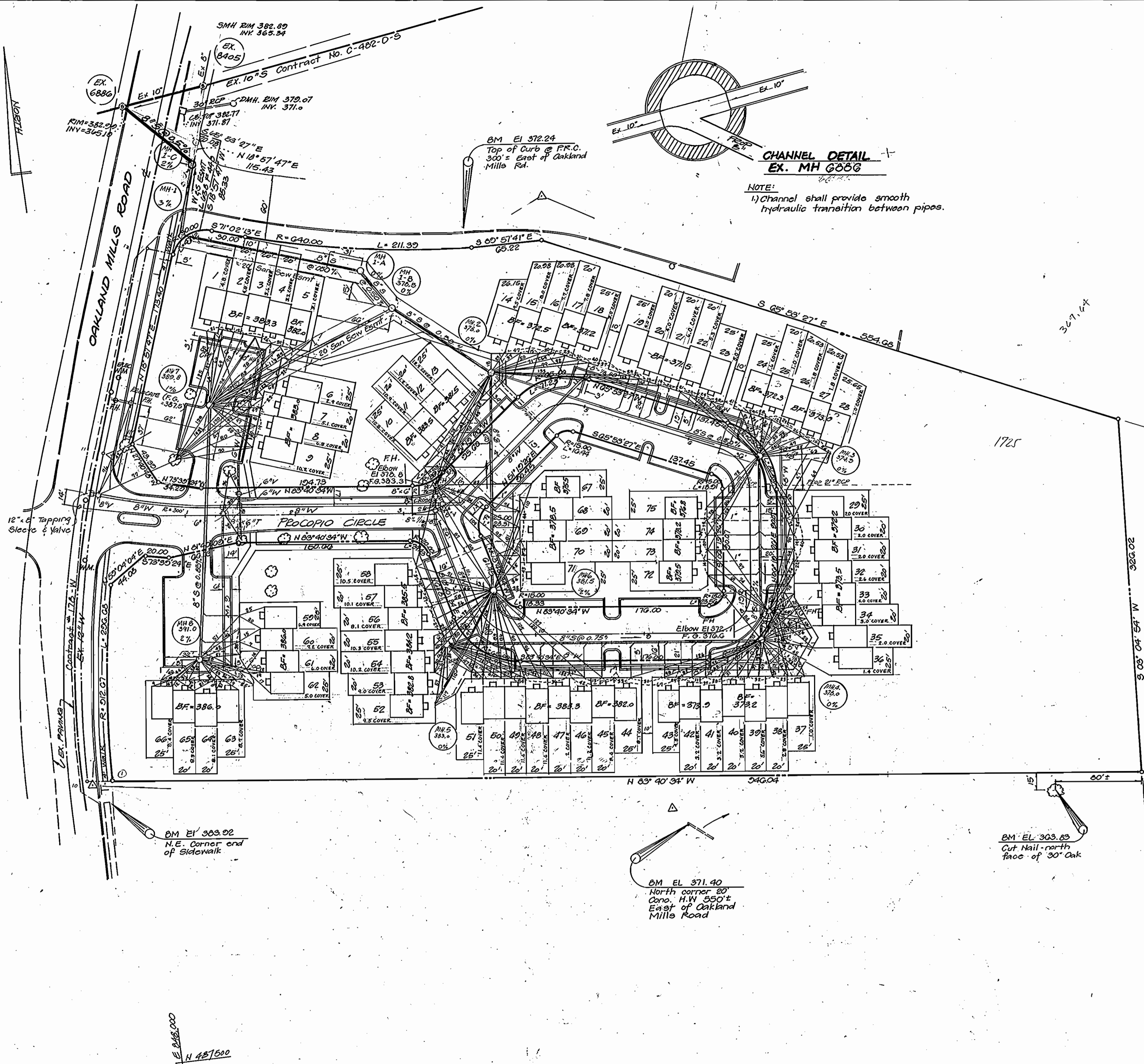
The Interprofessional
 PLANNING & DESIGN STUDIO, LTD.
 Engineers • Architects • Surveyors
 Planners & Landscape Architects

OWNERS
 Bernard Goldberg and
 Bruno Reich
 3001 Park Ave.
 Ellicott City, Maryland
 21043
 (301) 465-2772

VICINITY MAP
 AND
 GENERAL NOTES

COLUMBIA
 OAK VIEW VILLAGE LOTS 1-75
 ELECTION DISTRICT #6
 CONTRACT NO. 24-1124-D

SCALE:
 SHEET
 1 OF 3



OWNERS
 Bernard Goldberg and
 Bruno Reich
 3001 Park Ave.
 Ellicott City, Maryland
 21043
 (301) 465-2772

REVISIONS		
Date	Description	By
Nov 18 '83	add MH I-C, connect to EX. MH 6886	MBL
Dec. 18, 83	changed the No. 370.8 to 370.6	U.R.
5/15/84	changed MH # I-C Moved 20' South	ST

DEPARTMENT OF PUBLIC WORKS
 HOWARD COUNTY, MARYLAND

Michael F. Norman
 Director of Public Works
 DATE: 10-27-83

William J. Reidy
 Chief - Bureau of Engineering
 DATE: 10-27-83

Robert J. ...
 Chief - Bureau of Utilities
 DATE: 10-27-83

IPDS
 The Interprofessional
PLANNING & DESIGN STUDIO, LTD.
 Engineers • Architects • Surveyors
 Planners & Landscape Architects

802 Sligo Avenue
 Silver Spring, Md.
 20910
 (301) 585-5676

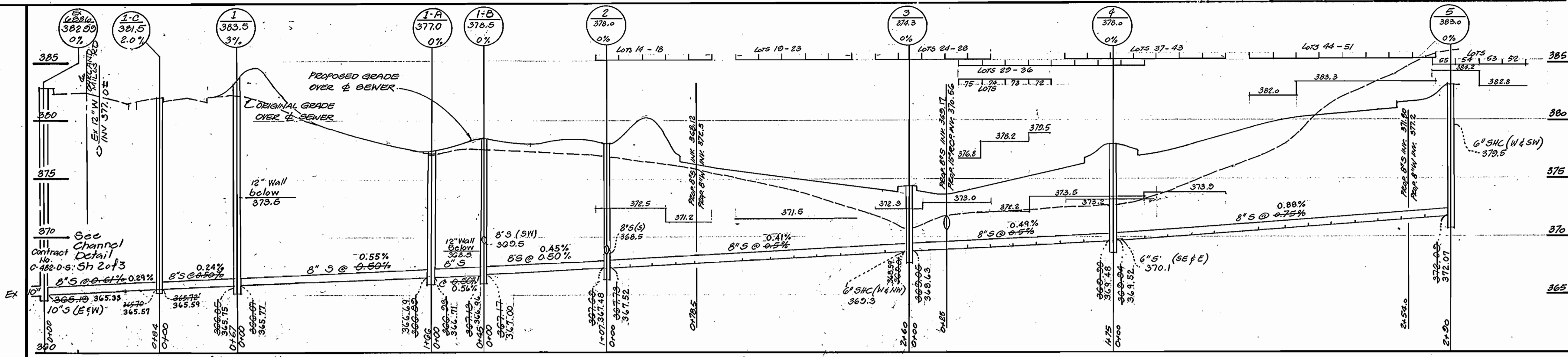
PLAN FOR WATER & SEWER MAINS
PROFILES OF WATER MAINS

COLUMBIA
OAK VIEW VILLAGE
 LOTS 1-76
 ELECTION DISTRICT #6
CONTRACT No. 24-1124-D

SCALE:
 Horiz. 1" = 50'
 Vert. 1" = 5'

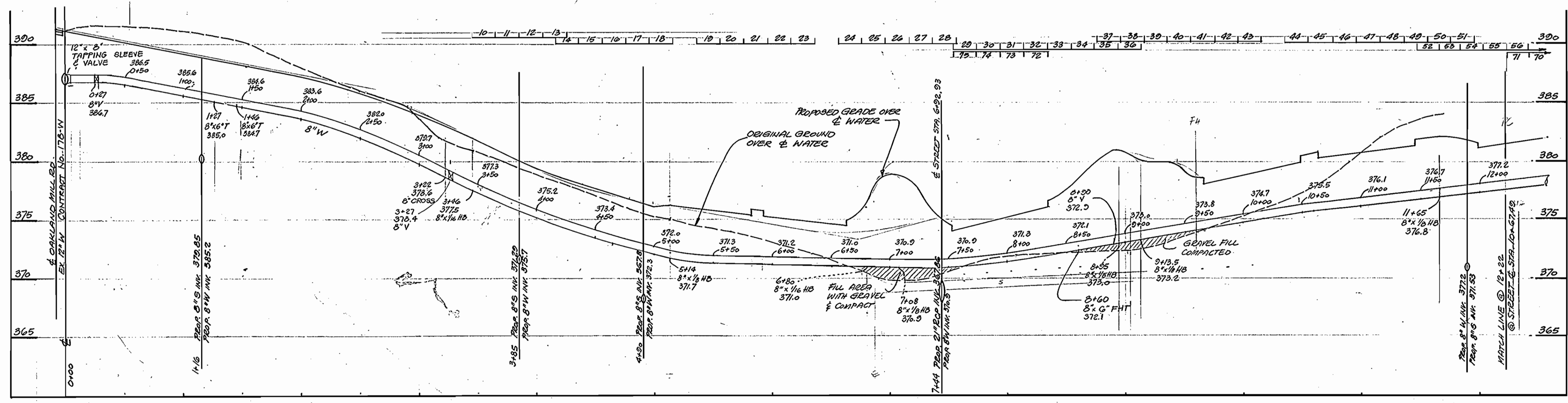
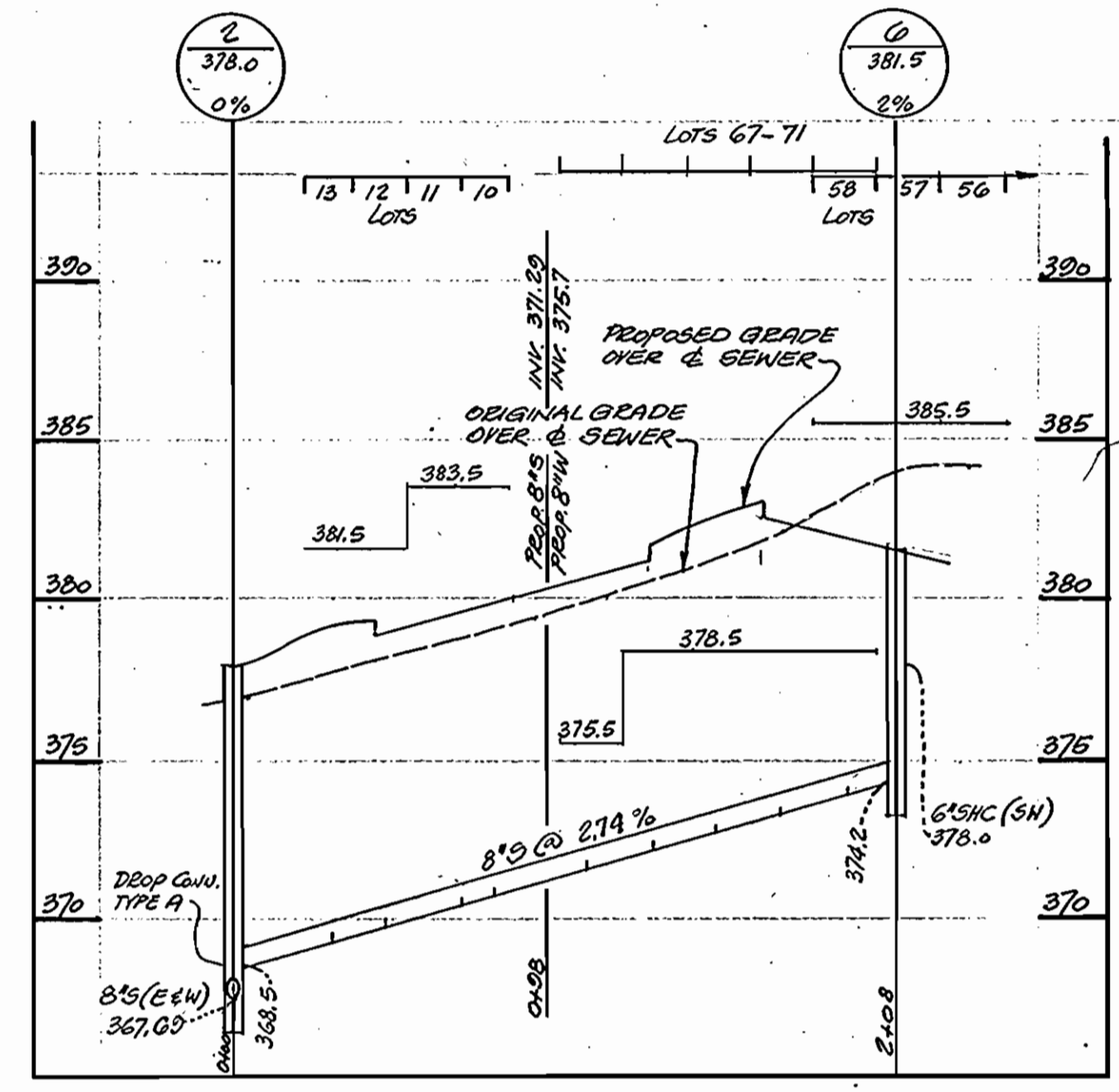
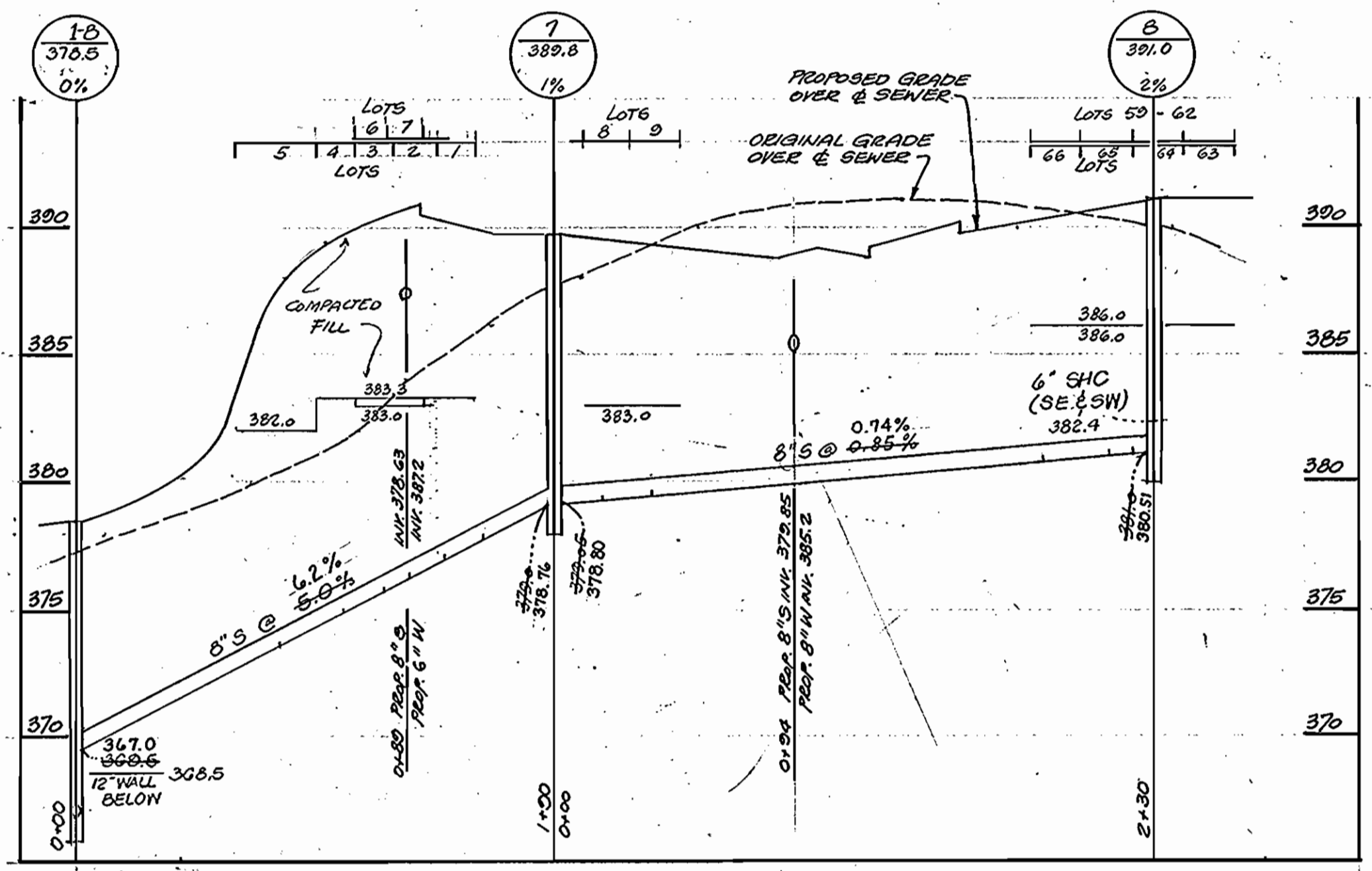
SHEET
 2 OF 3

AS-BUILT AUG. 13, 1984



SEWER HOUSE CONNECTION
INVERT ELEVATIONS AT PROPERTY LINE

STATION	LOT	INVERT	
FROM MH #2 TO #3			
MH #2 L	14	368.0	
0+20 L	15	368.20	
0+35 L	16	368.50	
0+55 L	17	368.70	
0+85 L	18	368.91	
1+20 L	19	369.10	
1+50 L	20	369.14	
1+50 L	21	369.24	
1+70 L	22	369.34	
1+90 L	23	369.44	
2+30 L	24	369.70	
MH #3	25	369.90	
MH #3	26	369.90	
MH #3	27	370.10	
MH #3	28	370.30	
FROM MH #3 TO #4			
0+45 L	29	370.00	
0+70 L	30	370.10	
0+95 L	31	370.15	
1+05 L	32	370.20	
1+25 L	33	370.25	
1+45 L	34	370.30	
1+60 L	35	370.35	
MH #4	36	370.40	
MH #4	37	371.1	
0+50 R	76	370.40	
0+75 R	74	370.40	
0+90 R	73	370.40	
1+05 R	72	370.40	
FROM MH #4 TO #5			
0+08 L	39	370.80	
0+20 L	40	370.97	
0+48 L	41	371.12	
0+60 L	42	371.27	
0+88 L	43	371.42	
1+15 L	44	371.57	DWG DROP ELIMINATED
1+48 L	45	371.72	DWG DROP ELIMINATED
1+60 L	46	371.87	DWG DROP ELIMINATED
1+88 L	47	372.02	DWG DROP ELIMINATED
2+00 L	48	372.17	DWG DROP ELIMINATED
2+28 L	49	372.32	DWG DROP ELIMINATED
2+40 L	50	372.47	DWG DROP ELIMINATED
2+60 L	51	372.62	DWG DROP ELIMINATED
MH #5	52	372.77	
MH #5	53	372.92	
MH #5	54	373.07	
MH #5	55	373.22	
FROM MH #5 TO #7			
1+00 R	1	372.8	TWIN 6"
1+25 R	2	372.8	DWG DROP ELIMINATED
1+50 R	3	372.8	DWG DROP ELIMINATED
1+75 R	4	372.8	DWG DROP ELIMINATED
2+00 R	5	372.8	DWG DROP ELIMINATED
2+25 L	6	372.8	DWG DROP ELIMINATED
2+50 L	7	372.8	DWG DROP ELIMINATED
FROM MH #7 TO #8			
0+20 L	8	380.25	
0+40 L	9	380.36	
1+25 L	59	382.12	
2+15 L	60	382.30	
2+25 L	61	382.12	TWIN 6"
	62	382.10	TWIN 6"
MH #8	63	382.5	TWIN 6"
MH #8	64	382.5	TWIN 6"
MH #8	65	383.0	TWIN 6"
MH #8	66	383.0	TWIN 6"
FROM MH #8 TO #6			
0+20 R	13	372.0	DWG DROP ELIMINATED
0+35 R	12	372.0	DWG DROP ELIMINATED
0+45 R	11	372.0	DWG DROP ELIMINATED
0+85 R	10	372.0	DWG DROP ELIMINATED
7+92 R	58	380.0	DWG TWIN 6" DROP ELIMINATED
MH #6	57	380.0	
1+00 L	67	372.5	
1+25 L	68	372.5	
1+45 L	69	372.5	
1+65 L	70	372.5	
1+85 L	71	372.5	



REVISIONS		OWNERS
10/18/83	Add MH 3-5	Bernard Goldberg and Bruno Reich 3001 Park Ave. Elliott City, Maryland 21043 (301) 405-2772
10/20/83	Changed the slope	
11/17/83	Added MH 6	
11/17/83	Added MH 8	

DEPARTMENT OF PUBLIC WORKS
HOWARD COUNTY, MARYLAND

Robert H. Brinson
DIRECTOR OF PUBLIC WORKS
10-27-83

William F. Brinson
CHIEF - BUREAU OF UTILITIES
10-27-83

IPDS
The Interprofessional
PLANNING & DESIGN STUDIO, LTD.
Engineers • Architects • Surveyors
Planners & Landscape Architects

802 Sligo Avenue
Silver Spring, Md.
20910
(301) 585-5676



PROFILES OF WATER & SEWER MAINS

COLUMBIA
OAK VIEW VILLAGE LOTS 1-75
ELECTION DISTRICT #6
CONTRACT NO 24-1124-D

SCALE:
HORIZ 1"=50'
VERT. 1"=5'

SHEET
3 OF 3

AS-BUILT AUG. 13, 1984