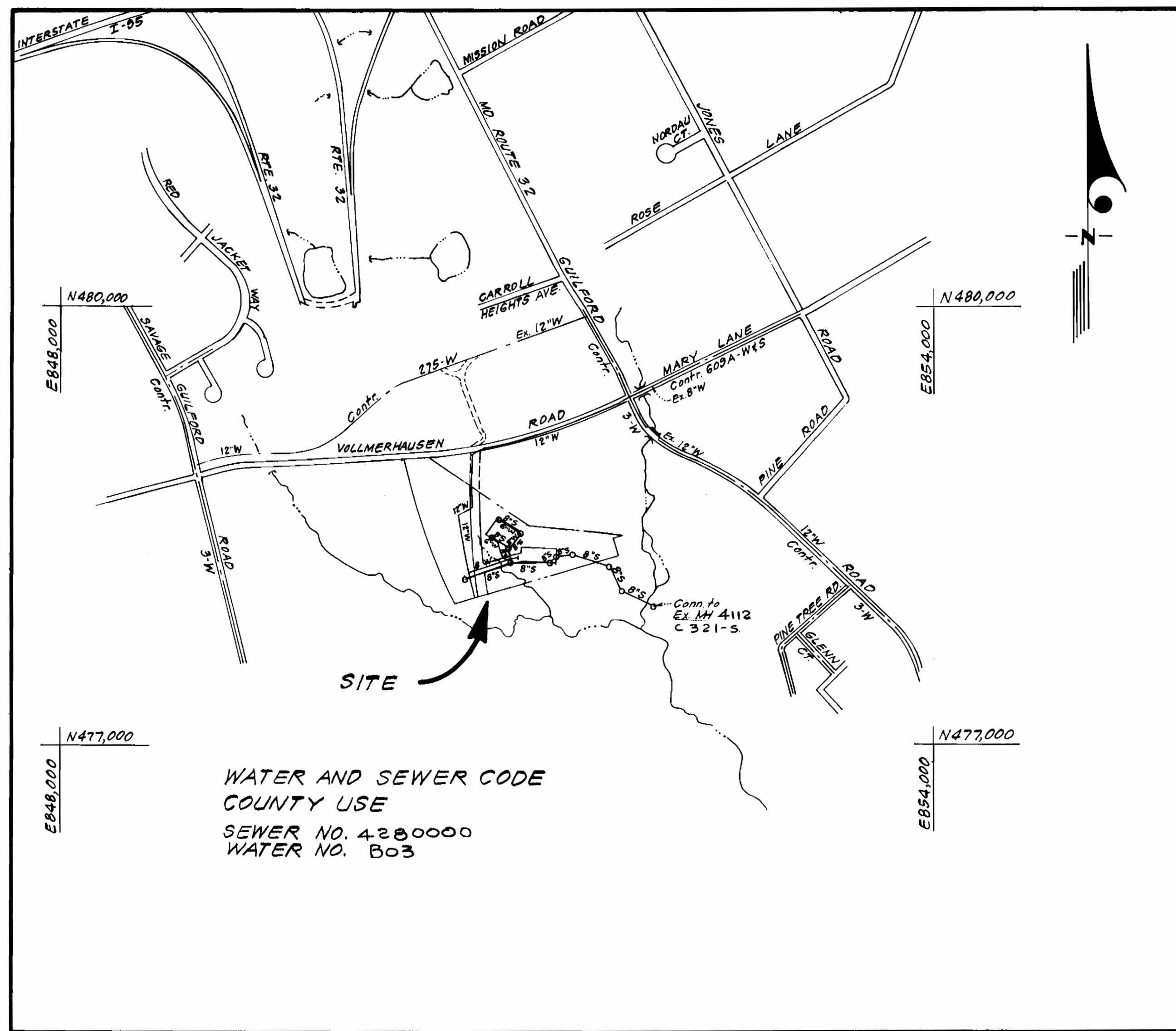


TYPE OF BUILDING	Townhouses
NUMBER OF LOTS	33
NUMBER OF SHC'S	53
NUMBER OF WHC'S	37
DRAINAGE AREA	Little Patuxent



WATER AND SEWER CODE
COUNTY USE
SEWER NO. 4280000
WATER NO. 803

VICINITY MAP
Scale: 1" = 600'

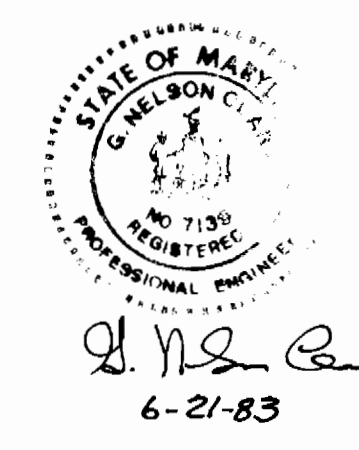
GENERAL NOTES

- Approximate location of existing mains are shown. The contractor shall take all necessary precautions to protect existing mains and services and maintain uninterrupted supply. Any damage incurred shall be repaired immediately to the satisfaction of the inspector, at the contractor's expense.
- All horizontal controls are based on Maryland State Coordinates.
- All vertical controls are based on U.S.G.S. Datum.
- All pipe elevations shown are invert elevations.
- Clear all utilities by a minimum of 6" clear all poles by 2'-0" minimum or tunnel as required. Any cost incurred to the contractor for tunneling or bracing at poles shall be included in unit prices bid for excavation and backfill.
- For details not shown on the drawings use Howard County Standard Details.
- For materials and construction methods use Howard County Standard Specifications.
- Contractor shall locate existing utilities a minimum of two (2) weeks in advance of construction operations in the vicinity of proposed utilities at his own expense.
- Contractor shall notify the following utilities or agencies at least five (5) working days before starting work shown on these plans.
 - State Highway Administration - 531-5533
 - Baltimore Gas & Electric Company - Underground Electric Distribution Customer Service - 685-0123
 - Baltimore Gas & Electric Company - Underground Gas Distribution Customer Service - 685-0123
 - Engineering - Damage Control - 234-5621
 - Miss Utility - 1-559-0100
 - Chesapeake & Potomac (C & P) Telephone Company - 725-9976
 - American Telephone and Telegraph - Cable Location Division - 393-3553
 - Colonial Pipeline Company - 781-4641
 - Bureau of Utilities Howard County - 992-2366
- Trees are to be protected from damage to maximum extent. Trees located within the construction strip are not to be removed or damaged by the contractor.
- Contractor shall remove trees, stumps, and roots along line of excavation as directed by the Inspector. Payment for such removal shall be included in the unit price bid for excavation and backfill.
- Place regulation "Men Working" and warning signs as required to comply with Maryland State Highway Administration Manual of Traffic Control for Highway Construction and Maintenance Operations.
- All water mains to be ~~C.P.P.~~ D.I.P. unless otherwise noted.
- Top of all water mains to have a minimum of 3-1/2' cover unless otherwise noted.
- Valves adjacent to tees shall be strapped to tees.
- Block all fittings with concrete.
- Bury line elevations on fire hydrants shall be set to the elevations shown on the drawings. All fire hydrants shall be strapped and buttressed with concrete in accordance with standard details. Soil around the fire hydrant to be compacted in accordance with Section 5-15 of the Standard Specifications.
- All water house connections shall be for an inside meter setting.
- The contractor shall not operate any water main valves on the existing system.
- All sewer mains shall be C.S.P.X., V.C.P.X., P.V.C., or A.C.P. Class 2400 unless otherwise noted.
- The contractor shall provide a joint in all sewer mains within 2'-0" of exterior manhole wall.
- All manholes shall be 4'-0" inside diameter, unless otherwise noted.
- Water main and water house connection lines must have a minimum of one foot separation from the sanitary sewer and sewer house connections as they cross. Except at crossings, water and sewer lines shall have a minimum horizontal separation of 10'.
- For all copper Water House Connections use Flared Type Fittings only.
- Valve key extension shall be provided when depth of the valve operating nut exceeds 3.5". See standard detail W3.65.
- MH#1 shall have a watertight frame and cover.

Sediment Control Measures will be implemented in accordance with Article No. 15 of the Specifications B with Rough Grading Plan GP 83-48.F-83-11D

REVIEWED FOR HOWARD SOIL CONSERVATION DISTRICT AND MEETS TECHNICAL REQUIREMENT
 SIGNATURE: *[Signature]* DATE: 6-24-83
 U.S. SOIL CONSERVATION SERVICE
 This Development Plan is approved for Soil Erosion and Sediment Control by the Howard Soil Conservation District.
 APPROVED: *[Signature]* DATE: 6-24-83
 Howard S.C.D. DATE

CONTRACT NO. 24-1117-D
 ASBURY WOODS
 SECTION ONE
 HOWARD COUNTY, MARYLAND
 DEPARTMENT OF PUBLIC WORKS

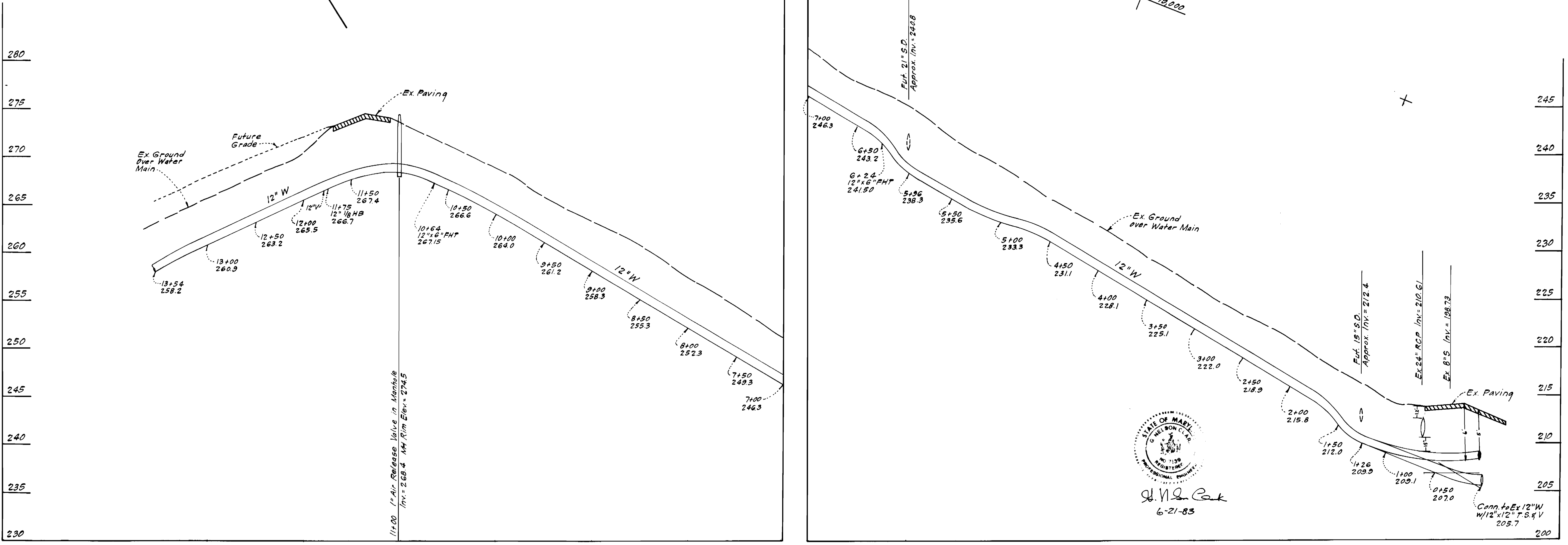
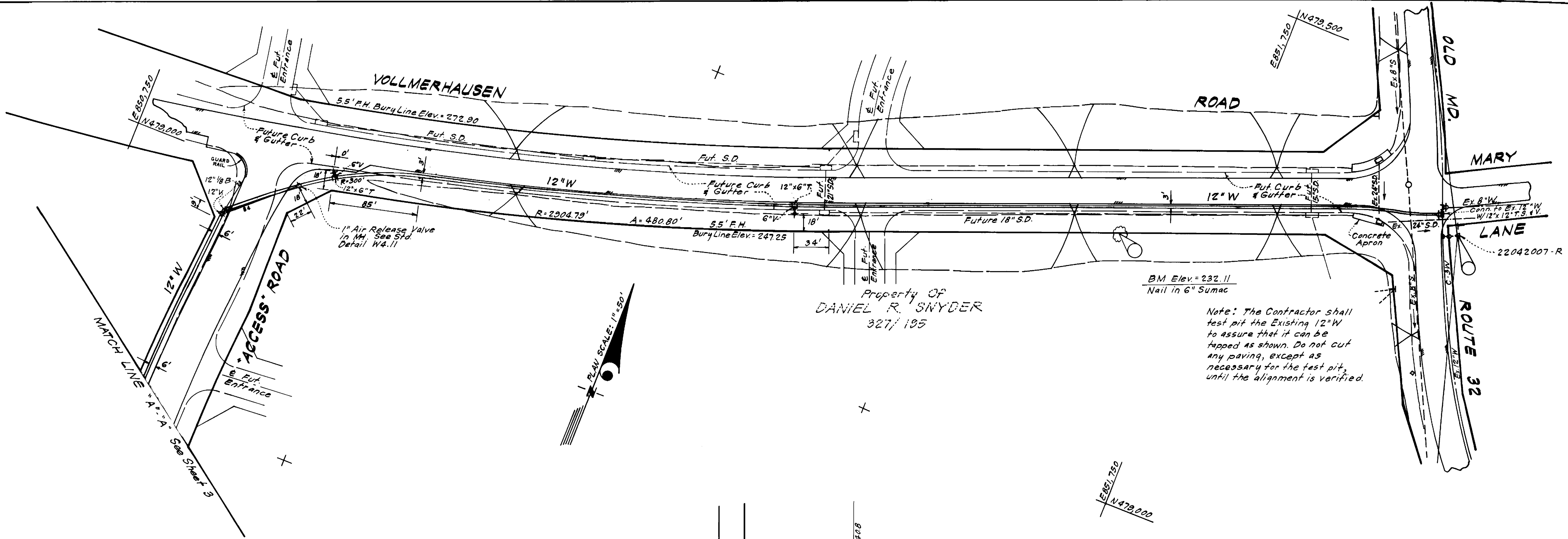


ITEM	ESTM'D	AS-BUILT	MATERIAL/SUPPLIER
6" VCPX		699 LF	THE LOGAN CLAY PRODUCTS CO. ATP WATER/SEWER SUPPLIES
M.H.		13 EA.	ATLANTIC PRECAST
QUANTITIES			
6" W	304 LF	354 LF	GRIFFIN PIPE
8" W	514 LF	779 LF	GRIFFIN PIPE/BELAIR
12" W	2245 LF	2245 LF	GRIFFIN PIPE
8" S	1980 LF	1,691 LF	THE LOGAN CLAY PRODUCTS CO. ATP WATER/SEWER SUPPLIES
12" V	2 EA.	3 EA.	FLOW IND.
8" V	4 EA.	4 EA.	FLOW IND.
6" (excl. F.H.)	4 EA.	4 EA.	FLOW IND.
F.H.	4 EA.	4 EA.	FLOW IND.
12" x 8" T.S. & V	1 EA.	1 EA.	

DEPARTMENT OF PUBLIC WORKS
 HOWARD COUNTY, MARYLAND
 DIRECTOR OF PUBLIC WORKS: *[Signature]* DATE: 7-1-83
 CHIEF, BUREAU OF ENGINEERING: *[Signature]* DATE: 7/1/83
 CHIEF, BUREAU OF UTILITIES: *[Signature]* DATE: 6-30-83
 CHIEF, LAND DEVELOPMENT DIVISION: *[Signature]* DATE: 7/1/83

CLARK • FINEFROCK & SACKETT
 ENGINEERS • PLANNERS • SURVEYORS
 11315 LOCKWOOD DRIVE • SILVER SPRING, MARYLAND • (301) 593-3400

CONTRACT NO. 24-1117-D
 TITLE SHEET
 ASBURY WOODS SECTION ONE
 6TH ELECTION DISTRICT
 DRAWING NO. 1 OF 4
 SCALE AS SHOWN



STATE OF MARYLAND
 NELSON CLARK
 PROFESSIONAL ENGINEER
 No. 1155
 6-21-83

PROFILE SCALE
 Horiz : 1" = 50'
 Vert : 1" = 5'

DEPARTMENT OF PUBLIC WORKS
 HOWARD COUNTY, MARYLAND
 Director of Public Works - DATE 7-1-83
 Chief, Bureau of Engineering - DATE 7-1-83
 Chief, Bureau of Utilities - DATE 6-30-83
 Chief, Land Development - DATE

CLARK · FINEFROCK & SACKETT
 ENGINEERS · PLANNERS · SURVEYORS
 11315 LOCKWOOD DRIVE · SILVER SPRING MARYLAND 20904 · (301) 593-3400

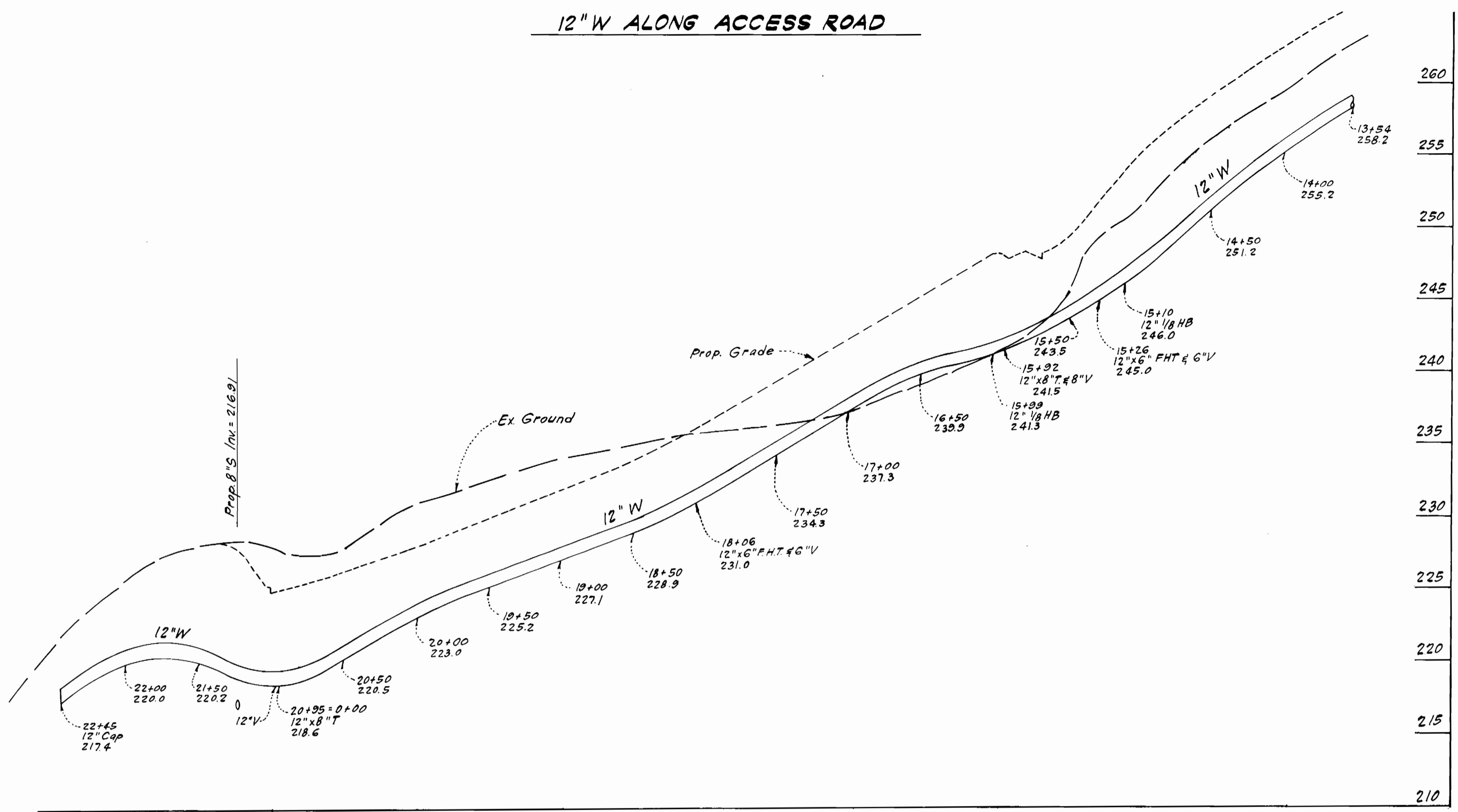
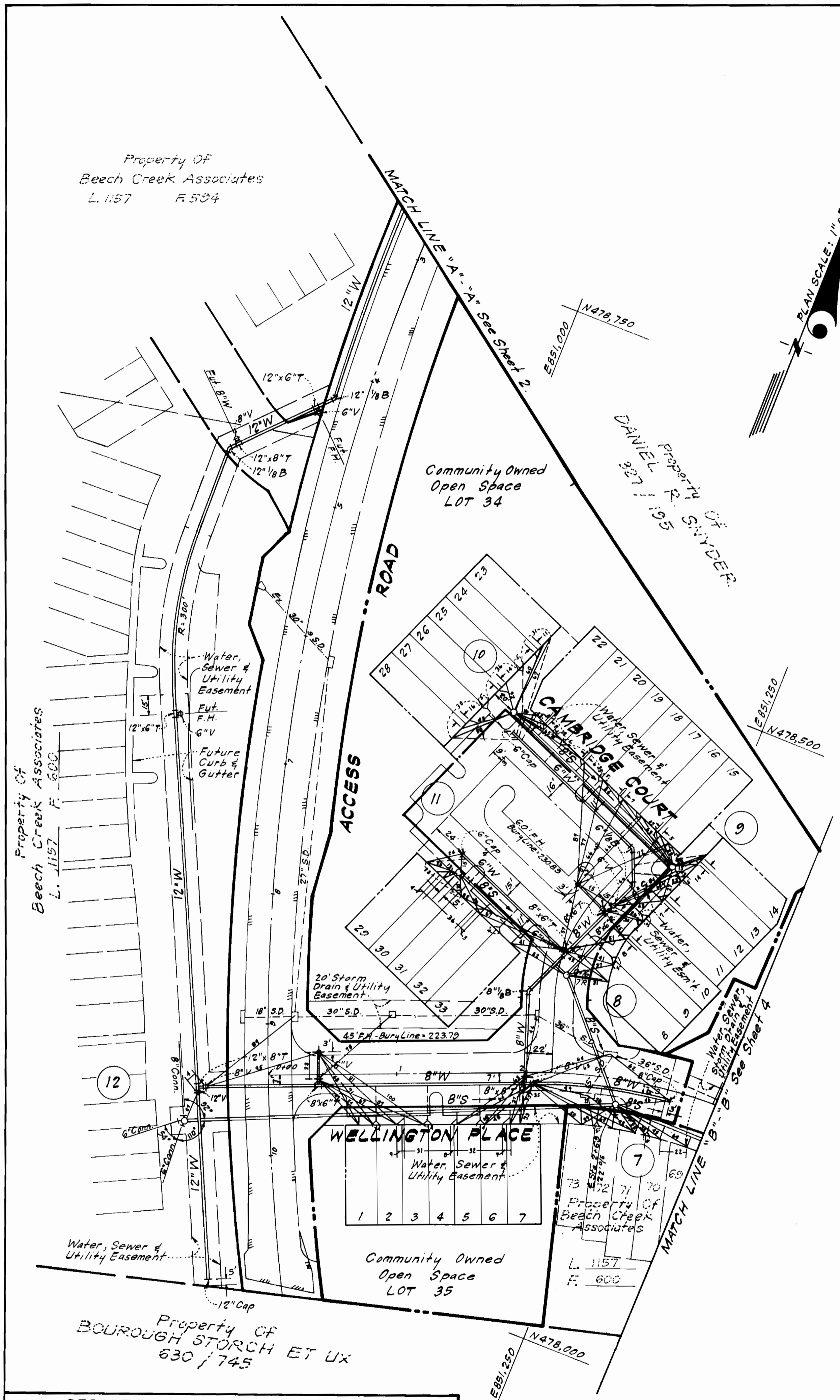
CONTRACT NO. 24-1117-D

PLAN AND PROFILES OF
 WATER & SEWER MAINS

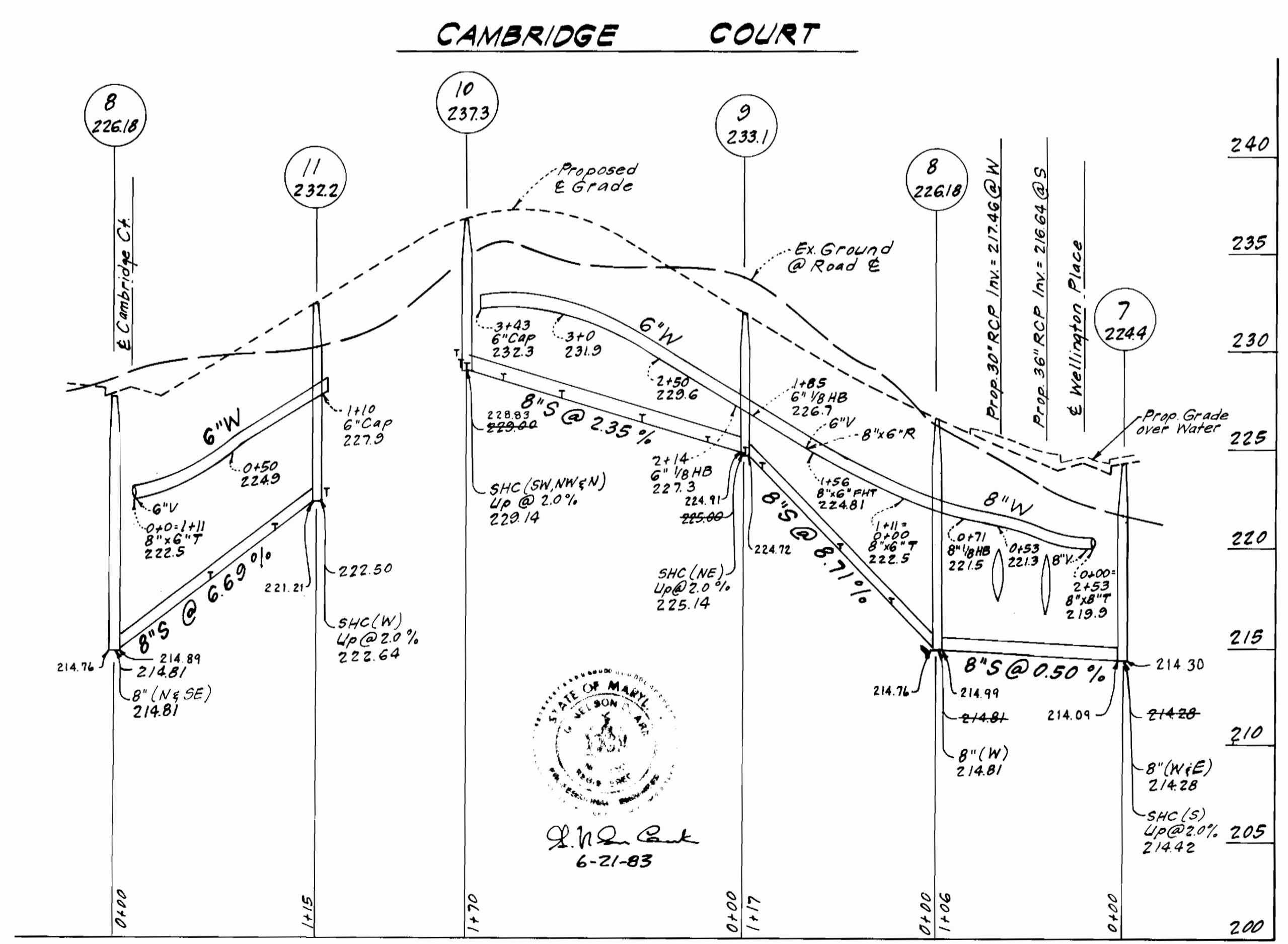
ASBURY WOODS
 SECTION ONE
 6TH ELECTION DISTRICT

DRAWING NO. 2
 OF 4
 SCALE AS SHOWN

AS-BUILT JULY 23, 1984



PROFILE SCALE
 Horiz.: 1" = 50'
 Vert.: 1" = 5'



DEPARTMENT OF PUBLIC WORKS
 HOWARD COUNTY, MARYLAND
 DATE: 8-20-83
 DATE: 6-30-83

CLARK • FINEFROCK & SACKETT
 ENGINEERS • PLANNERS • SURVEYORS
 11315 LOCKWOOD DRIVE SILVER SPRING MARYLAND 20904 (301) 593-3400

CONTRACT NO. 24-1117-D

PLAN AND PROFILES OF
 WATER & SEWER MAINS

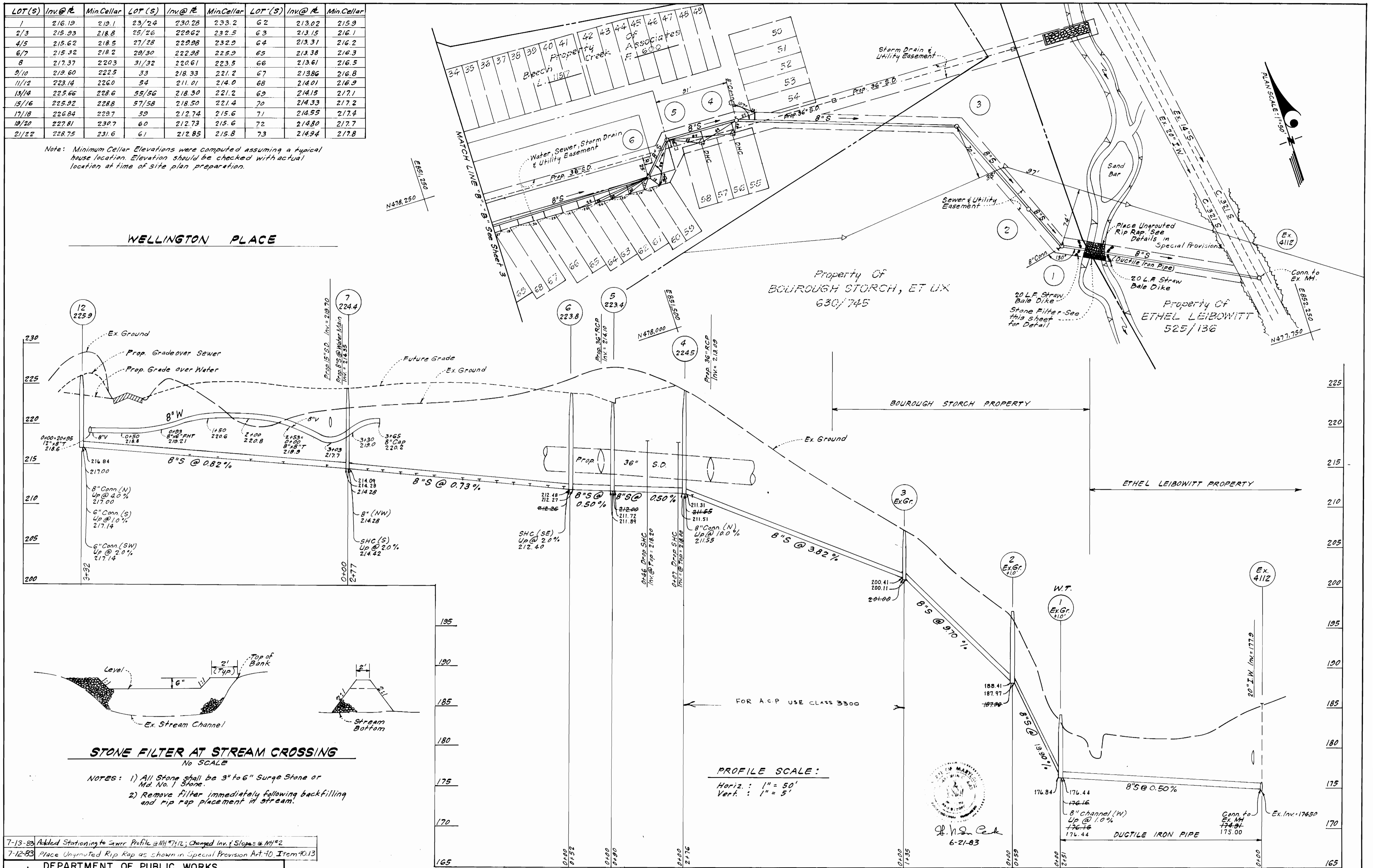
ASBURY WOODS
 SECTION ONE
 6TH ELECTION DISTRICT

DRAWING NO. 3 OF 4
 SCALE AS SHOWN

AS-BUILT JULY 23, 1984

LOT(S)	Inv@R	Min.Cellar	LOT(S)	Inv@R	Min.Cellar	LOT(S)	Inv@R	Min.Cellar
1	216.19	219.1	23/24	230.28	233.2	62	213.02	215.9
2/3	215.93	218.8	25/26	229.62	232.5	63	213.15	216.1
4/5	215.62	218.5	27/28	229.08	232.9	64	213.31	216.2
6/7	215.32	218.2	29/30	229.98	232.9	65	213.38	216.3
8	217.37	220.3	31/32	220.61	223.5	66	213.61	216.5
9/10	219.60	222.5	33	218.33	221.2	67	213.86	216.8
11/12	223.14	226.0	34	211.01	214.0	68	214.01	216.9
13/14	225.66	228.6	35/36	218.30	221.2	69	214.15	217.1
15/16	225.92	228.8	37/38	218.50	221.4	70	214.33	217.2
17/18	226.84	229.7	39	212.74	215.6	71	214.55	217.4
19/20	227.81	230.7	40	212.73	215.6	72	214.80	217.7
21/22	228.75	231.6	41	212.85	215.8	73	214.94	217.8

Note: Minimum Cellar Elevations were computed assuming a typical house location. Elevation should be checked with actual location at time of site plan preparation.



STONE FILTER AT STREAM CROSSING

No SCALE

- NOTES: 1) All Stone shall be 3" to 6" Surge Stone or Md. No. 1 Stone.
 2) Remove filter immediately following backfilling and rip rap placement in stream.

7-13-83 Added Stationing to Sewer Profile @ MH #712; Changed Inv. f Slopes @ MH #2
 7-12-83 Place Unrouted Rip Rap as shown in Special Provision Art. 40, Item 40.13

DEPARTMENT OF PUBLIC WORKS
 HOWARD COUNTY, MARYLAND
 Director of Public Works - DATE
 Chief, Bureau of Engineering - DATE
 Chief, Bureau of Utilities - DATE

CLARK • FINEFROCK & SACKETT
 ENGINEERS PLANNERS SURVEYORS
 1115 LOCKWOOD DRIVE SILVER SPRING MARYLAND 20904 (301) 593-3400

CONTRACT NO. 24-117D

PLAN AND PROFILES OF
 WATER & SEWER MAINS

ASBURY WOODS
 SECTION ONE
 6TH ELECTION DISTRICT

DRAWING NO. 4 OF 4 SCALE AS SHOWN

AS-BUILT JULY 23, 1984