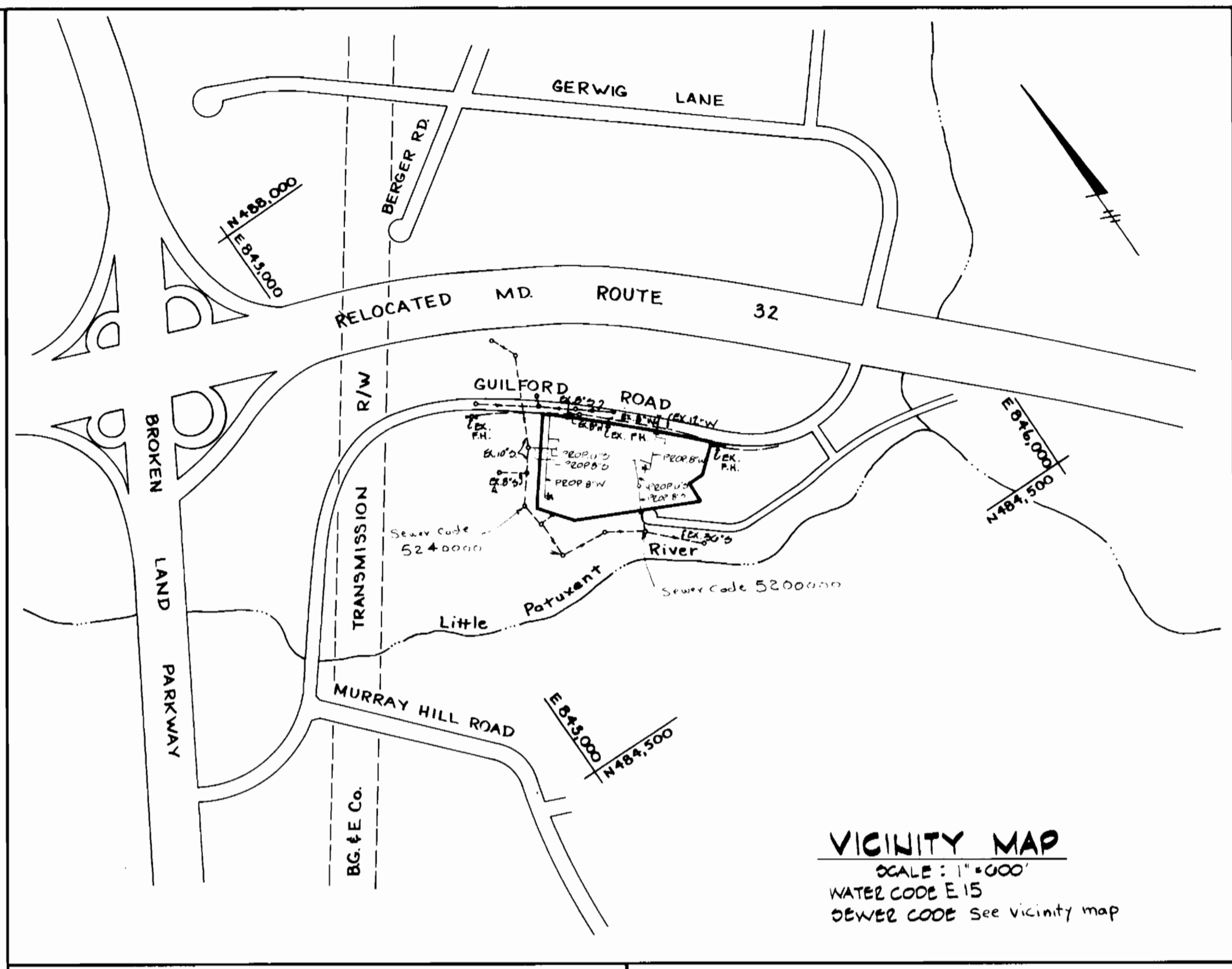


GENERAL NOTES

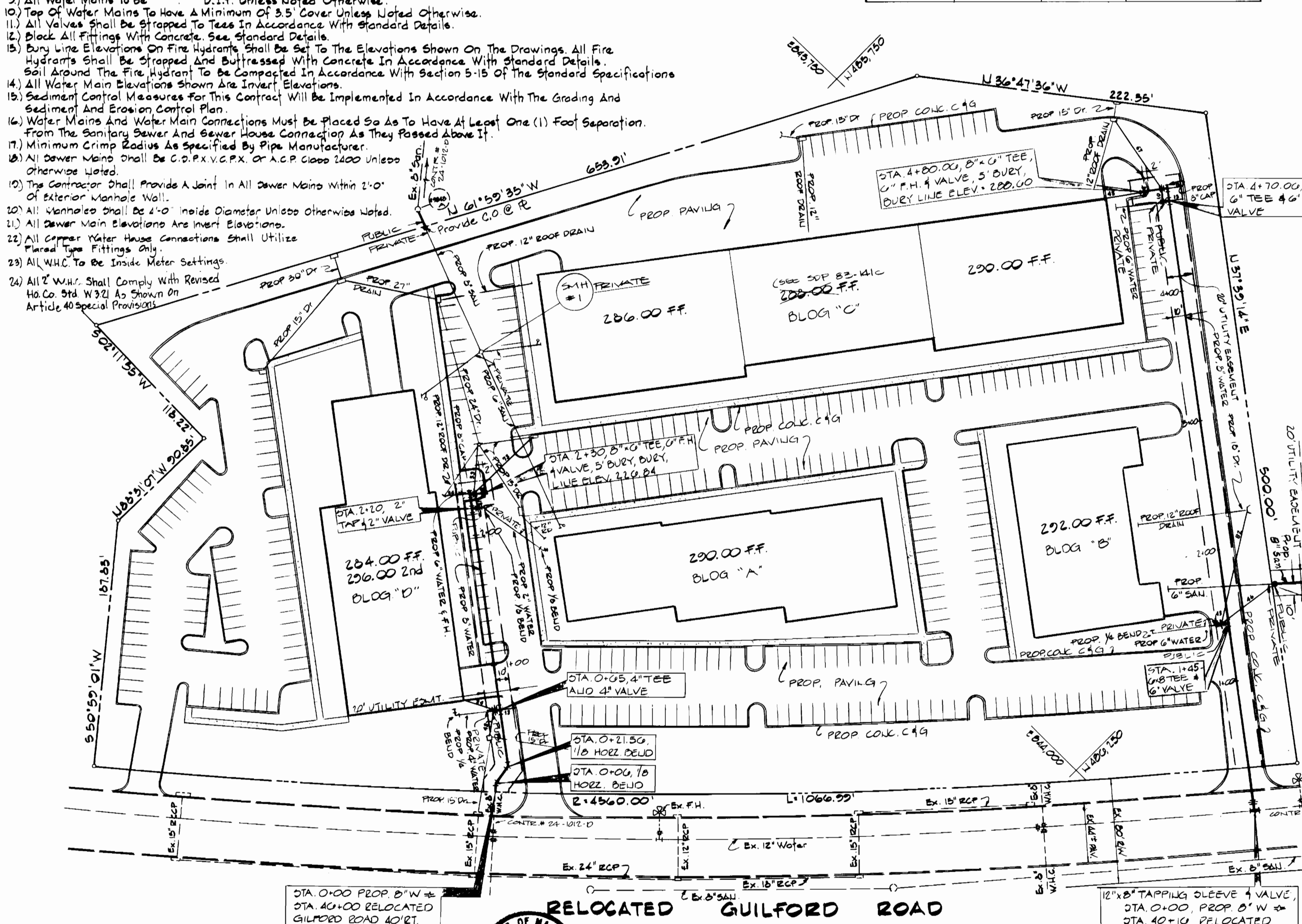
- Construction Of Water Mains And Sewer Mains Shall Be In Strict Accordance With The Standard Specifications And Standard Details Of Howard County. Any Damage Incurred Shall Be Repaired Immediately At Contractor's Expense.
- All Horizontal Controls Are Based On Maryland State Coordinate System.
- All Vertical Controls Are Based On U.S.G.S. Datum.
- Clear All Utilities By A Minimum Of 6' Clear All Poles 2'-0" Minimum Or Tunnel As Required.
- Contractor Shall Locate Existing Utilities In Advance Of Construction Operations In Vicinity Of Proposed Utilities.
- Contractor Shall Notify The Following Utilities Or Agencies At Least Five (5) Days Before Starting Work:
 "Mise Utility" (Collect) 1-557-0100 Baltimore Gas & Electric Co. - Undergrd 234-5555
 Baltimore Gas & Electric Co. - Undergrd 234-5651 Gas Distribution Engineering, Mr. Bell
 Electric Distribution Engineering - "Damage Control" Mr. G.U. Zeller, Manager Chesapeake And Potomac Telephone Co. 725-3976
 Bureau Of Utilities (Howard County) 992-2366
- Contractor Shall Remove Trees, Stumps And Roots Along Lines Of Excavation As Directed By The Engineer. Payment For Such Removal Shall Be Included In The Unit Price Bid For Excavation And Backfill For Water And Sewer Mains.
- Place Regulation "Men Working" And Warning Signs As Required To Comply With Maryland State Highway Administration Manual For Highway Construction And Maintenance Operations.
- All Water Mains To Be D.I.P. Unless Noted Otherwise.
- Top Of Water Mains To Have A Minimum Of 3.5' Cover Unless Noted Otherwise.
- All Valves Shall Be Strapped To Tees In Accordance With Standard Details.
- Block All Fittings With Concrete. See Standard Details.
- Bury Line Elevations On Fire Hydrants Shall Be Set To The Elevations Shown On The Drawings. All Fire Hydrants Shall Be Strapped And Buttressed With Concrete In Accordance With Standard Details. Soil Around The Fire Hydrant To Be Compacted In Accordance With Section 5-15 OF THE STANDARD SPECIFICATIONS.
- All Water Main Elevations Shown Are Invert Elevations.
- Sediment Control Measures For This Contract Will Be Implemented In Accordance With The Grading And Sediment And Erosion Control Plan.
- Water Mains And Water Main Connections Must Be Placed So As To Have At Least One (1) Foot Separation From The Sanitary Sewer And Sewer House Connection As They Passed Above It.
- Minimum Crimp Radius As Specified By Pipe Manufacturer.
- All Sewer Mains Shall Be C.P.P.V.C.P.X. OR A.C.P. Class 2000 Unless Otherwise Noted.
- The Contractor Shall Provide A Joint In All Sewer Mains Within 2'-0" Of Exterior Manhole Wall.
- All Manholes Shall Be 4'-0" Inside Diameter Unless Otherwise Noted.
- All Sewer Main Elevations Are Invert Elevations.
- All Copper Water House Connections Shall Utilize Flared Type Fittings Only.
- All W.H.C. To Be Inside Meter Settings.
- All W.H.C. Shall Comply With Revised Ho.Co. Std. W322 As Shown On Article 40 Special Provisions.

QUANTITIES			
ITEM	ESTIMATED	AD-BUILT	MATERIAL / SUPPLIER
8" SEWER	55L.F.	48.0 L.F.	PVC CERTAIN TEED CORR.
MANHOLED			ATLANTIC PRECAST CONC. CORR.
8" WATER	710 L.F.	700.0 L.F.	U.S. PIPE AND FOUNDRY CORR.
6" WATER	46 L.F.	40.0 L.F.	U.S. PIPE AND FOUNDRY CORR.
4" WATER	8 L.F.	10.0 L.F.	U.S. PIPE AND FOUNDRY CORR.
2" WATER	8 L.F.	10.0 L.F.	REVERE COPPER CORR.
12" x 8" TAPPING SLEEVE & VALVE	1	1	SMITH METROPOLITAN CORR.
4" VALVE	1	1	SMITH METROPOLITAN CORR.
2" VALVE	1	1	FORD METER BOX CO.
6" FEE HYD.	2	2	SMITH METROPOLITAN CORR.
6" VALVE	4	4	SMITH METROPOLITAN CORR.
1/8 BEND (8")	2	2	U.S. PIPE AND FOUNDRY CORR.
8" x 6" TEE	4	4	U.S. PIPE AND FOUNDRY CORR.
8" x 4" TEE	1	1	U.S. PIPE AND FOUNDRY CORR.
2" TAP	1	1	U.S. PIPE AND FOUNDRY CORR.



VICINITY MAP
SCALE: 1"=400'
WATER CODE E.15
SEWER CODE See vicinity map

TYPE OF BUILDINGS	OFFICE & WAREHOUSE
NUMBER OF LOTS	1
NUMBER OF WATER H.C.	4
NUMBER OF SEWER H.C.	4
DRAINAGE AREA	LITTLE PATUXENT



Note: Contractor To Test Pit Existing Utilities Prior To Laying Pipe To Determine Exact Location And Elevation.

James M. Delaporte
4-19-83

DEPARTMENT OF PUBLIC WORKS
HOWARD COUNTY, MARYLAND
4-21-83
G.W. STEPHENS JR. AND ASSOC. INC.
CONSULTING ENGINEERS
303 ALLEGHENY AVENUE
TOWSON, MARYLAND 21204

SEDIMENT CONTROL MEASURES FOR CONTRACT WILL BE IMPLEMENTED IN ACCORDANCE WITH ARTICLE #15 OF THE STANDARD SPECIFICATIONS AND G.D.P. # 82-141
DEPARTMENT OF PUBLIC WORKS
HOWARD COUNTY, MARYLAND
4-25-83

REVIEWED FOR THE HOWARD SOIL CONSERVATION DISTRICT AND MEETS TECHNICAL REQUIREMENTS.
James M. Delaporte
SIGNED DATE 4-15-83
U.S. SOIL CONSERVATION SERVICE

THIS CONSTRUCTION PLAN IS APPROVED FOR SOIL EROSION AND SEDIMENT CONTROL BY THE HOWARD SOIL CONSERVATION DISTRICT.
James M. Delaporte
APPROVED BY DATE 4-21-83
HOWARD SOIL CONSERVATION DISTRICT

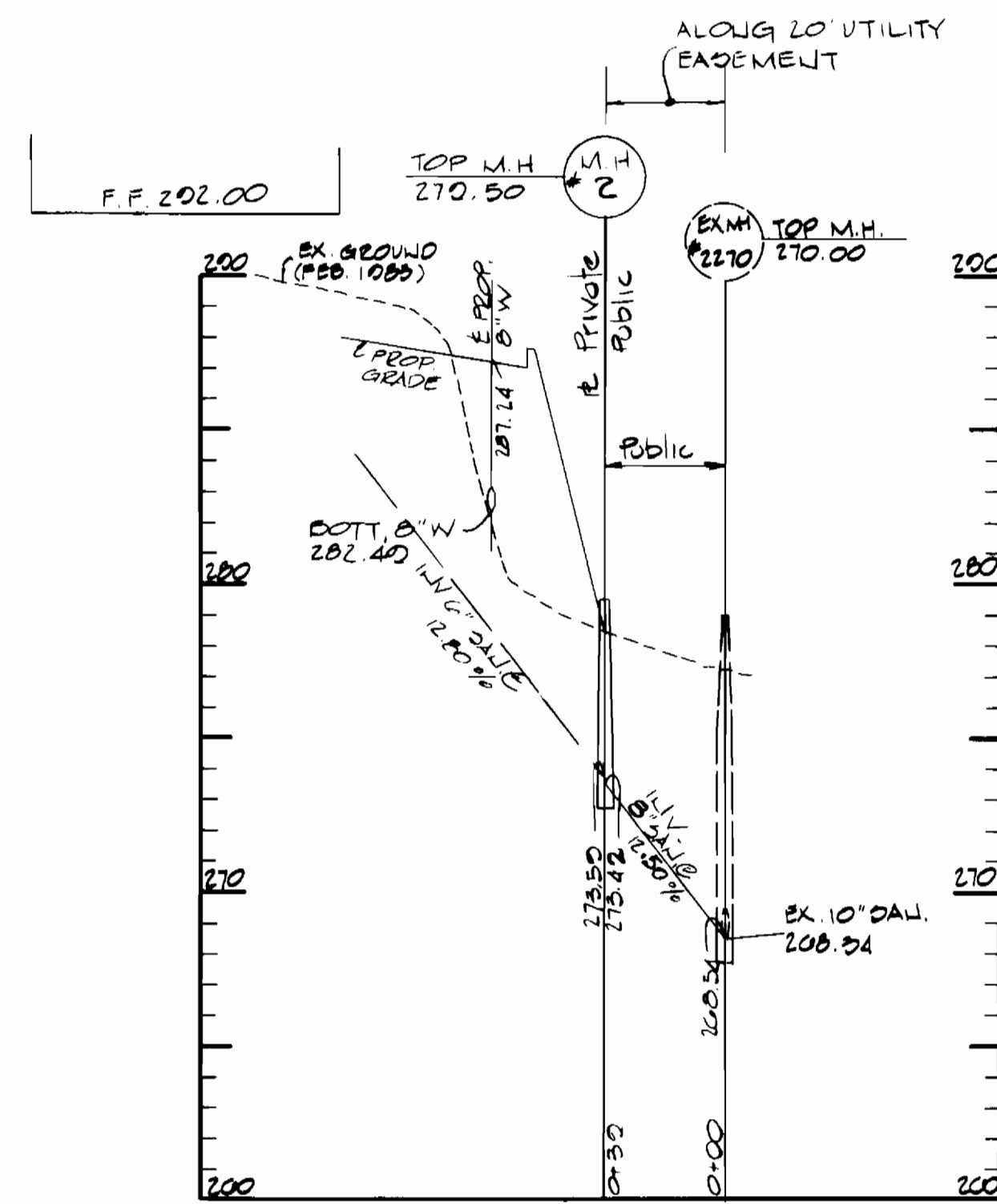
CONTRACT NO.
24-1109-D

PLAN AND PROFILE FOR PROPOSED WATER

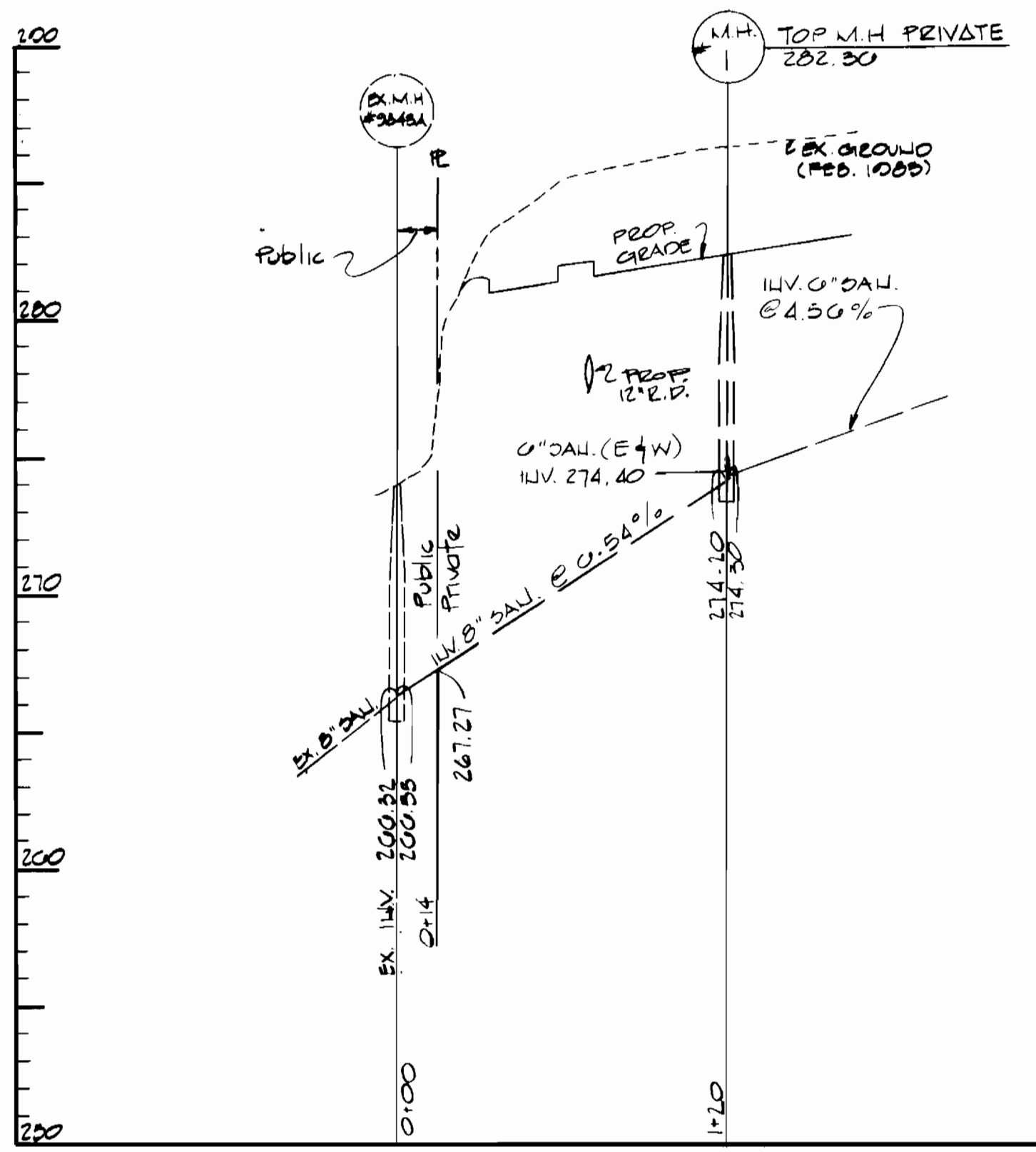
RIVERB CORPORATE PARK
PROPOSED OFFICE/WAREHOUSE COMPLEX
SECTION 2, AREA 1, PARCEL E
HOWARD COUNTY, MD. ELECT. DIST. #6

DATE	REVISION	BY
6-14-83	REV. SHEET TO BE BLDG. B/C/B	EWK
5-2-83	CHANGE TO BE BLDG. B/C/B	EWK
5-2-83	CHANGE TO BE BLDG. B/C/B	EWK

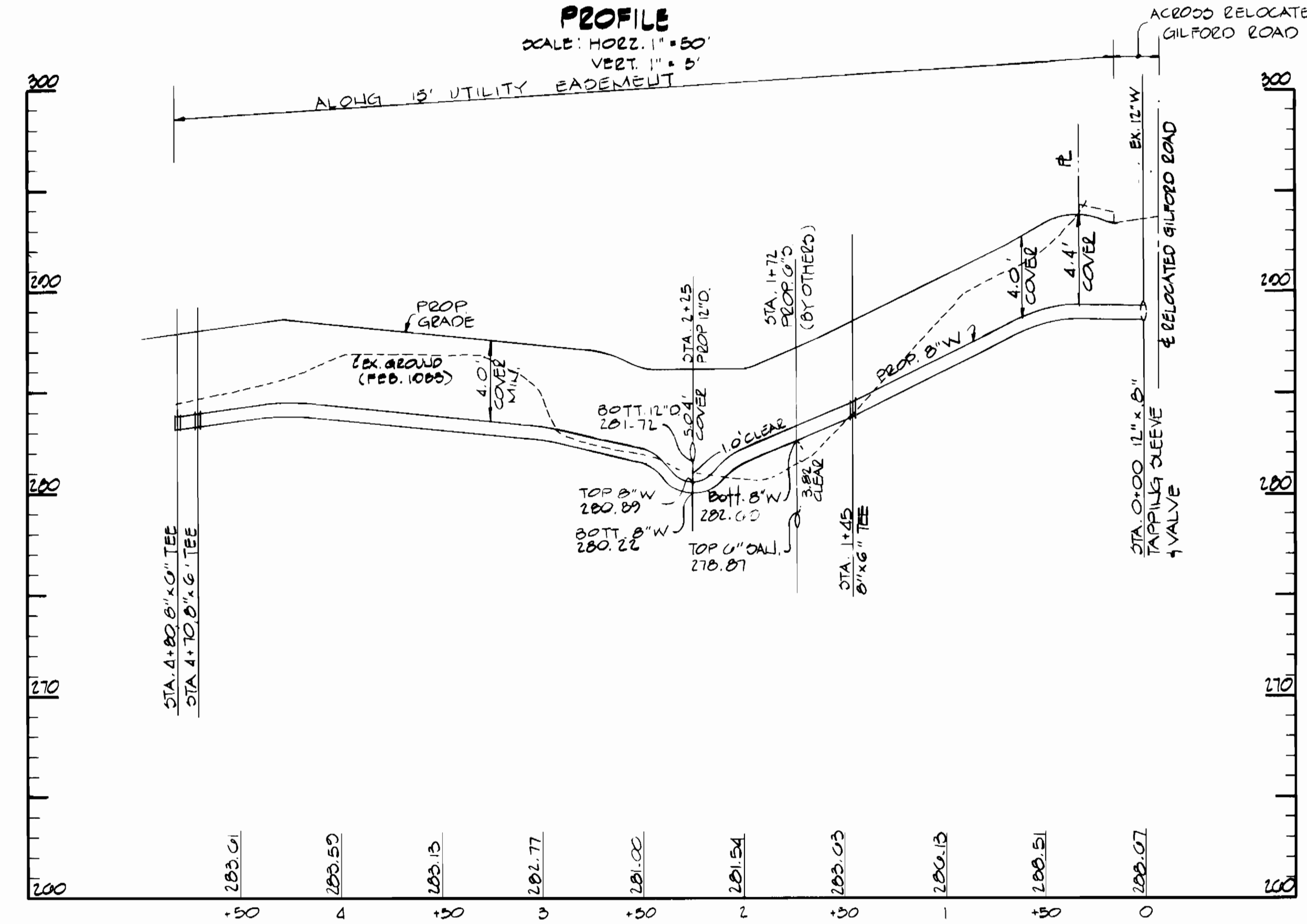
DRAWING NO. 1 OF 2	SCALE 1"=50'	DESIGNER T.B. DRAWN R.A.Z. CHECKED T.C. P.L.J. 4/78
--------------------	--------------	---



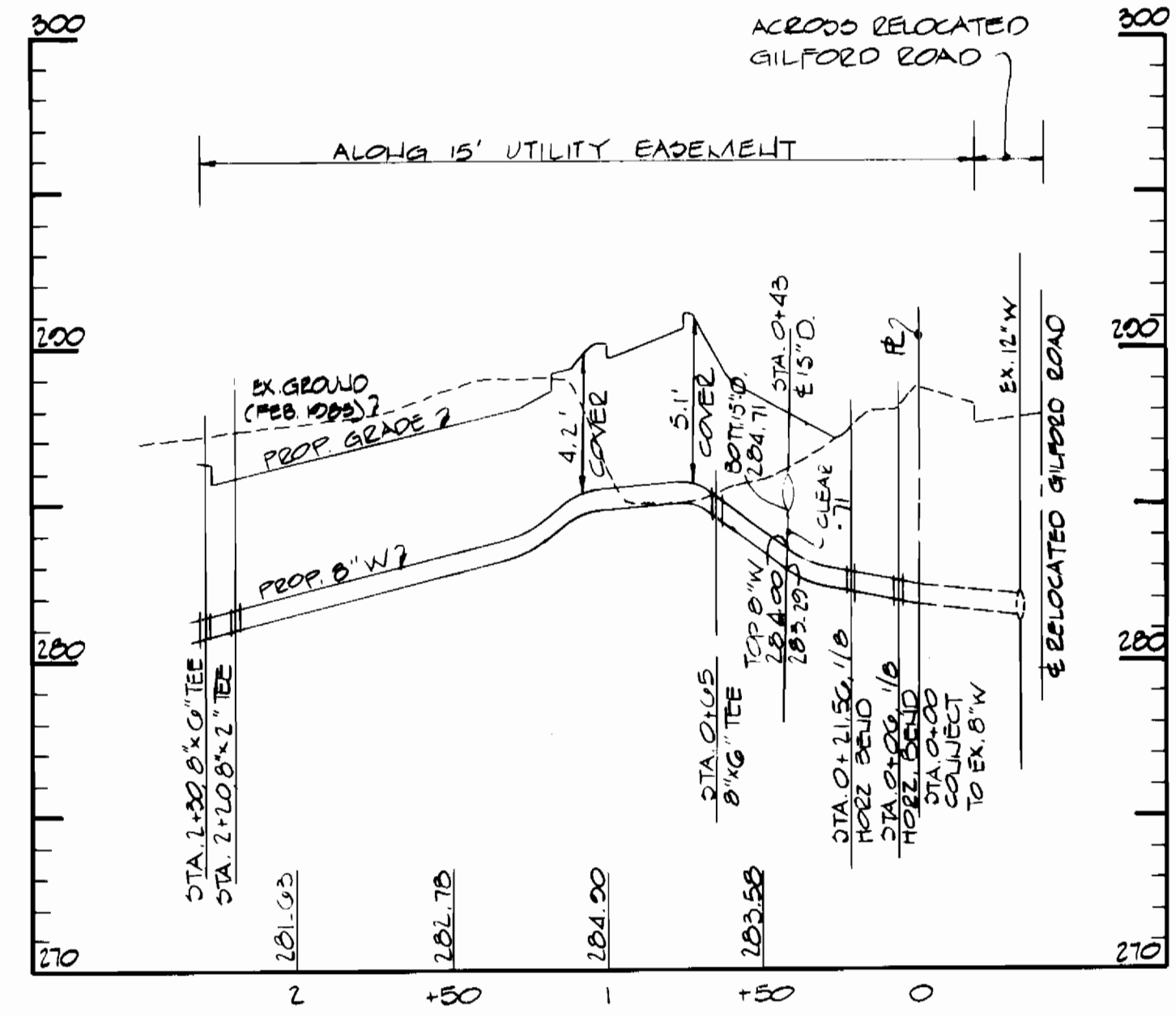
PROFILE
SCALE: HORIZ. 1" = 50'
VERT. 1" = 5'



PROFILE
SCALE: HORIZ. 1" = 50'
VERT. 1" = 5'



PROFILE
SCALE: HORIZ. 1" = 50'
VERT. 1" = 5'



PROFILE
SCALE: HORIZ. 1" = 50'
VERT. 1" = 5'



DEPARTMENT OF PUBLIC WORKS
HOWARD COUNTY, MARYLAND
R. H. M. Beinger 4-21-83
CHIEF BUREAU OF UTILITIES DATE
G. W. STEPHENS JR. AND ASSOC., INC.
CONSULTING ENGINEERS
303 ALLEGHENY AVENUE
TOWSON, MARYLAND 21284

SEDIMENT CONTROL MEASURES FOR CONTRACT WILL BE IMPLEMENTED IN ACCORDANCE WITH ARTICLE *15 OF THE STANDARD SPECIFICATIONS AND O.D.P. *82-141
DEPARTMENT OF PUBLIC WORKS
HOWARD COUNTY, MARYLAND
J. M. E. Nunnally 4-25-83
DIRECTOR PUBLIC WORKS DATE
CHIEF LAND DEVELOPMENT DATE

REVIEWED FOR THE HOWARD SOIL CONSERVATION DISTRICT AND MEETS TECHNICAL REQUIREMENTS
James M. Hill 4-15-83
DIGLED DATE
U.S. SOIL CONSERVATION SERVICE

THIS CONSTRUCTION PLAN IS APPROVED FOR SOIL EROSION AND SEDIMENT CONTROL BY THE HOWARD SOIL CONSERVATION DISTRICT.
D. T. P. 4-21-83
APPROVED BY DATE
HOWARD SOIL CONSERVATION DISTRICT

CONTRACT NO.
24-1109-D

PROFILE
OF
WATER MAIN

RIVERS CORPORATE PARK
SECTION 2, AREA 1, PARCEL E
G.W. ELECTION DISTRICT HOWARD CO., MD.

DRAWING NO. 2 OF 2	SCALE AS SHOWN	SPECIAL T.B.D. DRAWN BY CHECKED BY P.H. 4758
--------------------	----------------	--