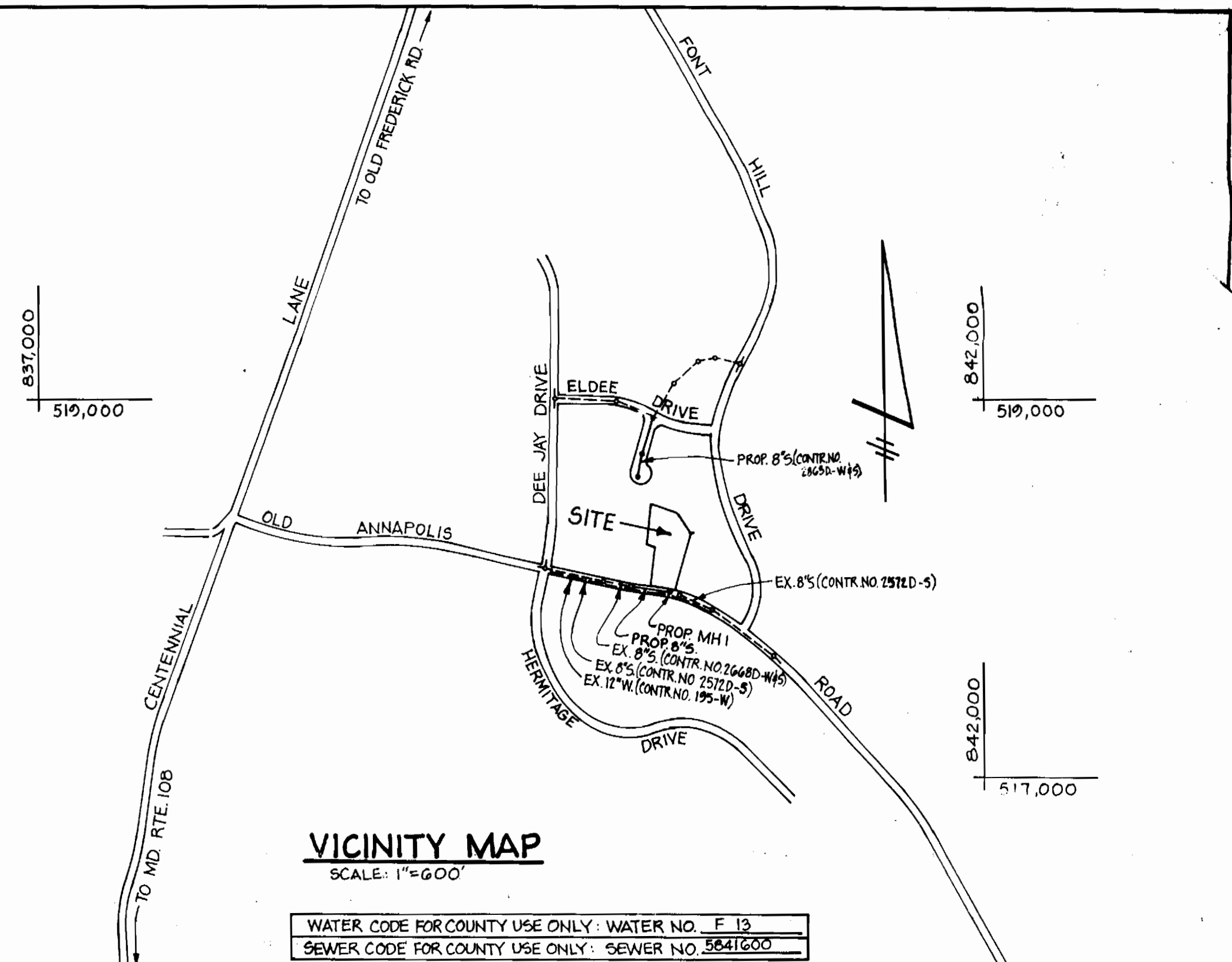


QUANTITIES			
ITEM	ESTIMATED	AS BUILT	MATERIAL/SUPPLIER
8" SEWER	205 L.F.		
MANHOLES	1		

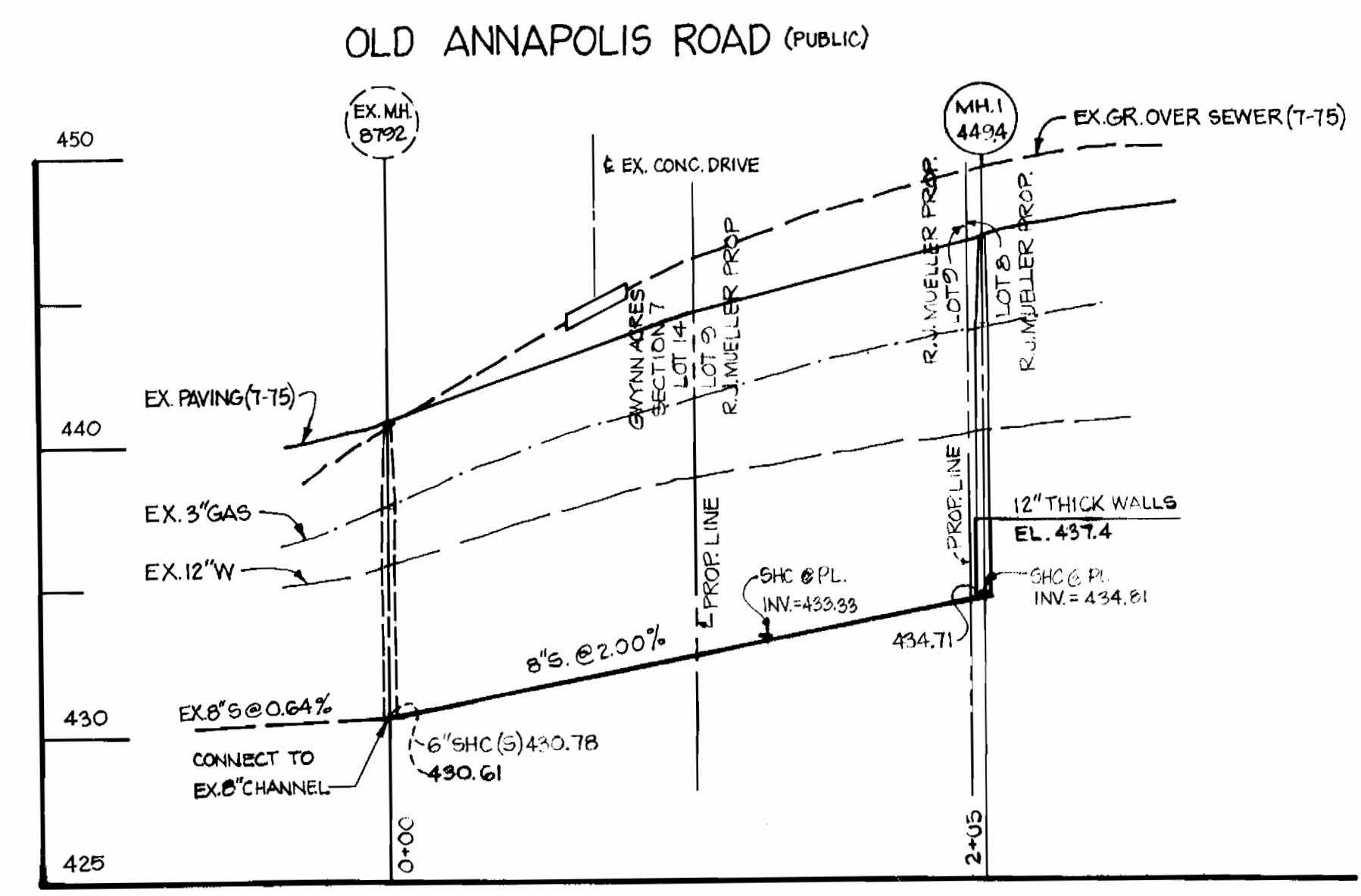
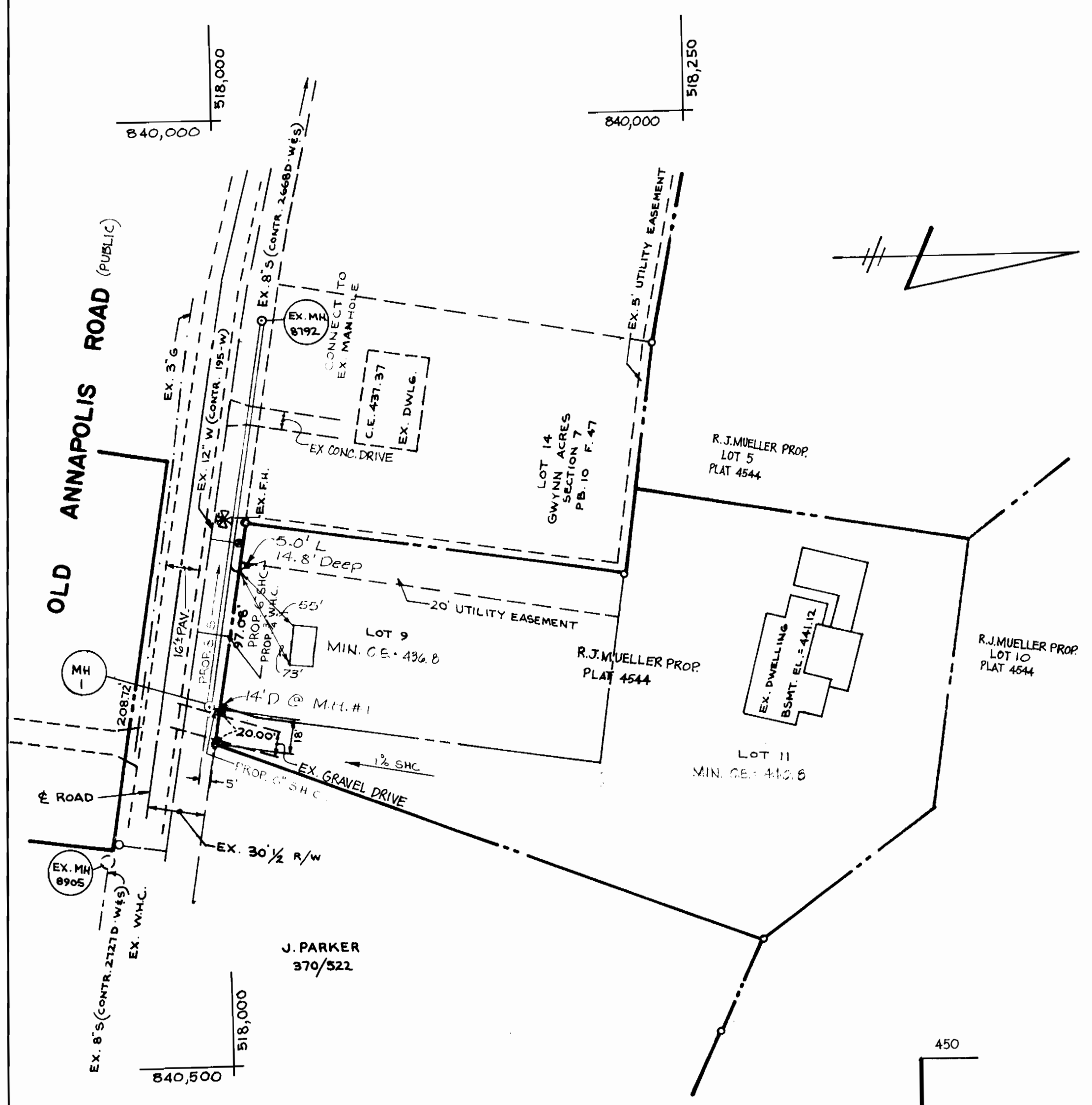


TYPE OF BUILDINGS: SINGLE FAMILY DWELLING	
NUMBER OF LOTS	2
NUMBER OF WATER HOUSE CONNECTIONS	1
NUMBER OF SEWER HOUSE CONNECTIONS	2
DRAINAGE AREA	LITTLE PATUXENT

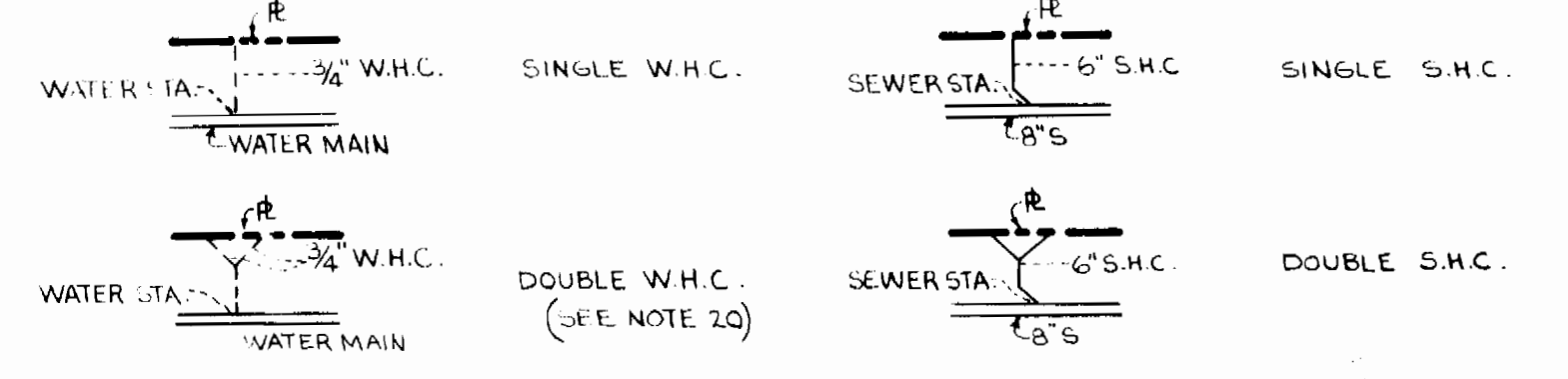
GENERAL NOTES

- APPROXIMATE LOCATION OF EX. MAINS ARE SHOWN. THE CONTRACTOR SHALL TAKE ALL NECESSARY PRECAUTIONS TO PROTECT EX. MAINS AND SERVICES AND MAINTAIN UNINTERRUPTED SUPPLY. ANY DAMAGE INCURRED SHALL BE REPAIRED IMMEDIATELY TO THE SATISFACTION OF THE ENGINEER, AT THE CONTRACTOR'S EXPENSE.
- ALL HORIZONTAL CONTROLS ARE BASED ON MD. STATE COORDINATES.
- ALL VERTICAL CONTROLS ARE BASED ON U.S.G.S. DATUM.
- ALL PIPE ELEV. SHOWN ARE INVERT ELEV.
- CLEAR ALL UTILITIES BY A MIN. OF 6'. CLEAR ALL POLES BY 2' MIN OR TUNNEL AS REQUIRED. ANY COST INCURRED TO THE CONTRACTOR FOR TUNNELING OR BRACING AT POLES SHALL BE INCLUDED IN UNIT PRICES BID FOR CONSTRUCTION OF THE MAIN.
- FOR DETAILS NOT SHOWN ON THE DWGS. USE HO. CO. STD. DETAILS.
- FOR MATERIALS AND CONSTRUCTION METHODS USE HO. CO. STD. SPECS.
- CONTRACTOR SHALL LOCATE EX. UTILITIES A MIN. OF TWO (2) WEEKS IN ADVANCE OF CONSTR. OPERATIONS IN THE VICINITY OF PROP. UTILITIES AT HIS OWN EXPENSE.
- CONTRACTOR SHALL NOTIFY THE FOLLOWING UTILITIES OR AGENCIES AT LEAST 5 WORKING DAYS BEFORE STARTING WORK SHOWN ON THESE PLANS:

STATE HIGHWAY ADMINISTRATION	531-5533	BALT. G & E CO.-UNDERGROUND GAS & ELECTRIC DIST. CUSTOMER SERVICE	685-0123
ENGINEERING - "DAMAGE CONTROL"	234-5621	AMERICAN TELEPHONE & TELEGRAPH - CABLE LOCATION DIVISION	393-3553
"MISS UTILITY"	1-559-0100	COLONIAL PIPELINE CO.	761-4641
C & P TELEPHONE CO.	725-2976	BUREAU OF UTILITIES HO. CO.	892-2366
- TREES ARE TO BE PROTECTED FROM DAMAGE TO MAX. EXTENT. TREES LOCATED WITHIN THE CONSTR. STRIP ARE NOT TO BE REMOVED OR DAMAGED BY THE CONTRACTOR.
- CONTRACTOR SHALL REMOVE TREES, STUMPS AND ROOTS ALONG LINE OF EXCAVATION AS DIRECTED BY THE ENGINEER. PAYMENT FOR SUCH REMOVAL SHALL BE INCLUDED IN THE UNIT PRICE BID FOR CONSTR. OF THE MAIN.
- PLACE REGULATION "MEN WORKING" & WARNING SIGNS AS REQ'D TO COMPLY WITH M.S.H.A. MANUAL OF TRAFFIC CONTROL FOR HIGHWAY CONSTR. & MAINTENANCE OPERATIONS.
- ALL WATER MAINS TO BE C.I.P. OR DIP UNLESS OTHERWISE NOTED.
- TOP OF ALL WATER MAINS TO HAVE A MIN. OF 3'-1/2" COVER UNLESS OTHERWISE NOTED.
- ALL WATER HOUSE CONNECTIONS SHALL BE FOR AN INSIDE METER SETTING.
- ALL SEWER MAINS SHALL BE C.S.P.X., P.C.S.P., V.C.P.X., A.C.P. CLASS 2400 OR PVC UNLESS OTHERWISE NOTED.
- THE CONTRACTOR SHALL PROVIDE A JOINT IN ALL SEWER MAINS WITHIN 2' OF EXTERIOR MANHOLE WALL.
- ALL MANHOLES SHALL BE 4' INSIDE DIAMETER, UNLESS OTHERWISE NOTED.
- MANHOLES SHOWN WITH 12" & 16" WALLS ARE BRICK MANHOLES ONLY.
- MANHOLES DESIGNATED W.T. IN PLAN & PROFILE SHALL HAVE WATERTIGHT FRAME & COVERS, STD. DETAIL 91.45. WHERE WATERTIGHT MANHOLE FRAME & COVER IS USED, SET TOP OF FRAME 1'-6" ABOVE FINISHED GRADE.
- HOUSE(S) WITH THE SYMBOL "C.N.S." INDICATES THAT CELLAR CAN NOT BE SERVED.



LEGEND



SEDIMENT CONTROL MEASURES FOR THIS CONTRACT WILL BE IMPLEMENTED IN ACCORDANCE WITH ARTICLE 15 OF THE SPECIFICATIONS.

REVIEWED FOR HOWARD COUNTY AND MEETS TECHNICAL REQUIREMENTS
 6-15-83
 U.S. SOIL CONSERVATION SERVICE

THE DEVELOPMENT IS APPROVED SOIL EROSION AND SEDIMENT CONTROL BY THE HOWARD SOIL CONSERVATION DISTRICT.
 6-15-83
 SOIL CONSERVATION DISTRICT

DEPARTMENT OF PUBLIC WORKS
 HOWARD COUNTY, MARYLAND

Director of Public Work: *John F. Neuman* 6-20-83
 Chief Bureau of Engineering: *Robert M. Bevinger* 6-17-83

BOENDER ASSOCIATES, INC.
 ENGINEERS, PLANNERS, SURVEYORS
 COURTHOUSE SQUARE, ELLICOTT CITY, MARYLAND 21043

CONTRACT NO. 24-1104D

R.J. MUELLER PROPERTY
 LOTS 11 AND 9, OLD ANNAPOLIS ROAD
 PLANS & PROFILES

ELECTION DISTRICT NO. 2
 DRAWING NO. 1 OF 1
 SCALE AS SHOWN

DES. L.L.Y.
 DRW. D.C.B.
 CHK. L.L.Y.
 81016

AS BUILT - OCT., 1985