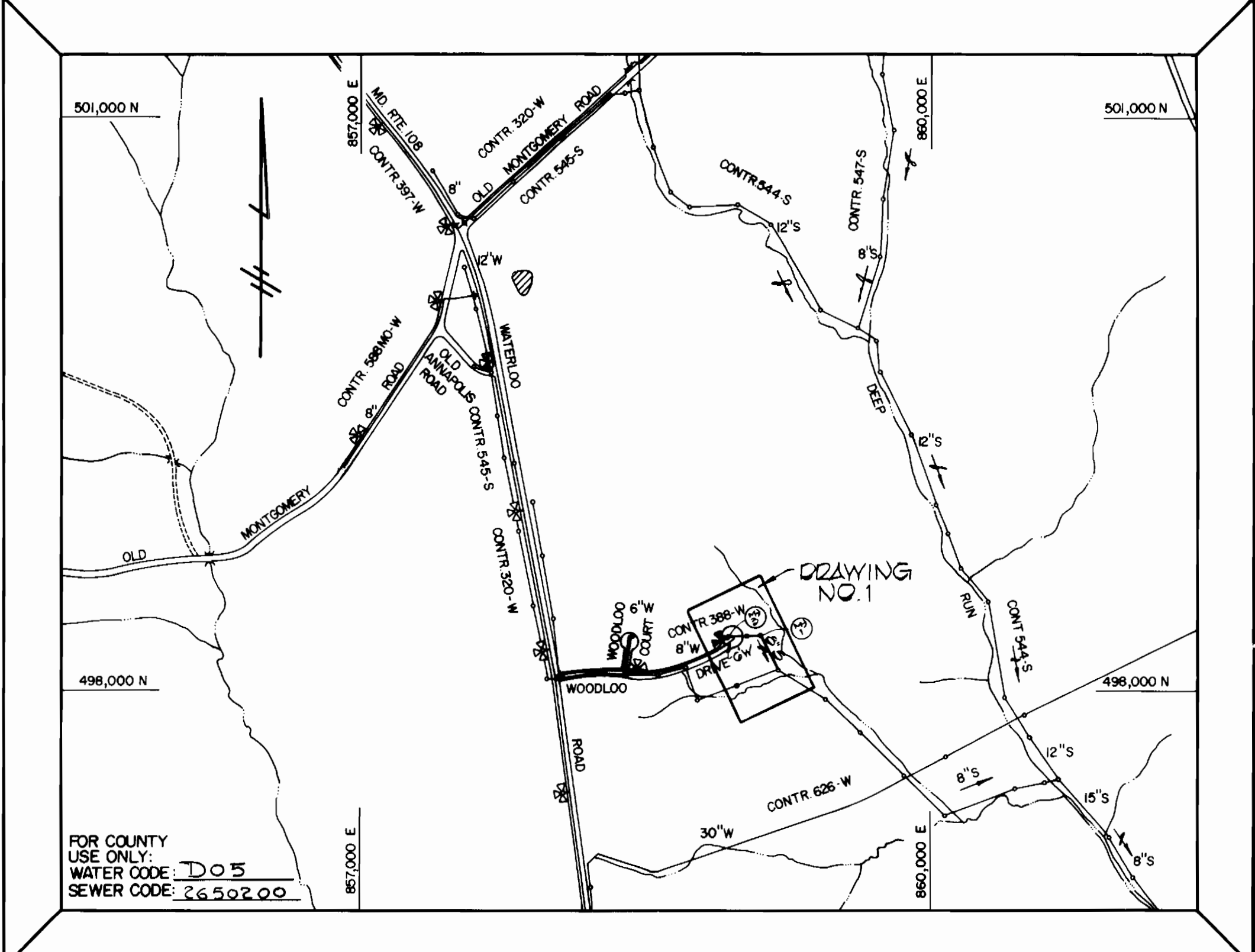
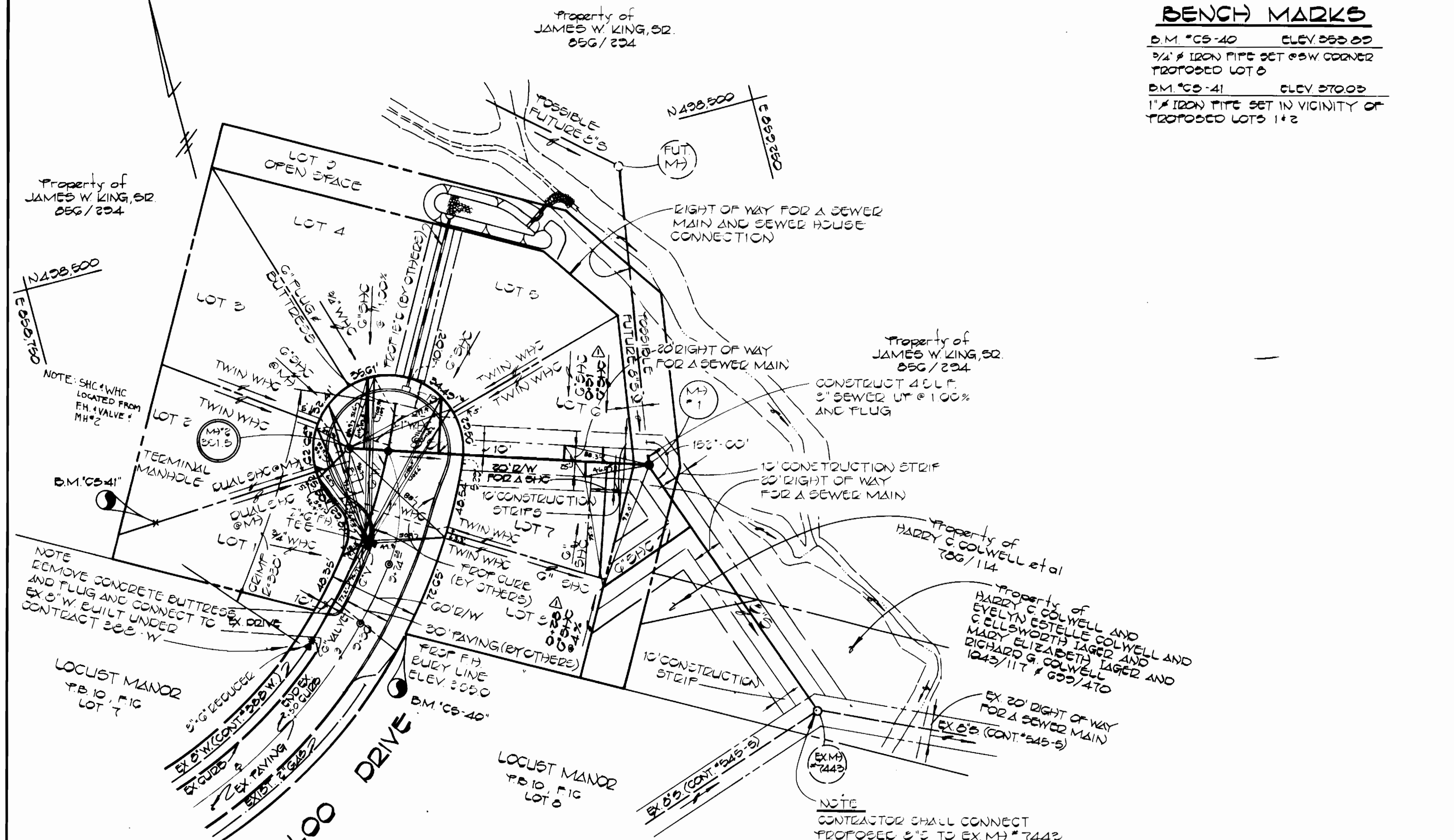


BENCH MARKS

B.M. *CS-40 ELEV 333.00
 1/2" IRON PIPE SET 6" W CORNER PROPOSED LOT 6
 B.M. *CS-41 ELEV 370.00
 1" IRON PIPE SET IN VICINITY OF PROPOSED LOTS 1+2



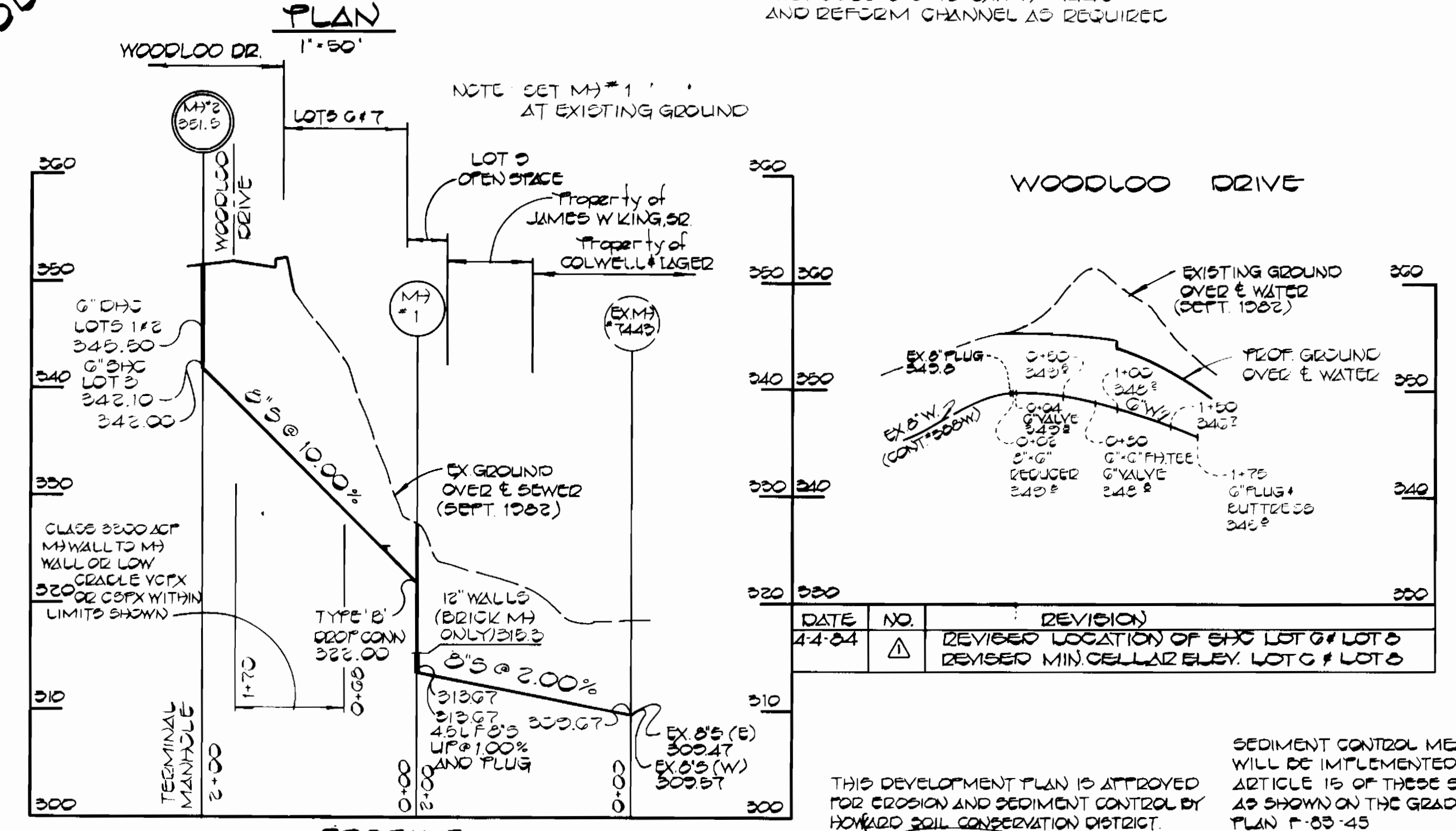
VICINITY MAP
 SCALE: 1" = 600'

GENERAL NOTES

- APPROXIMATE LOCATION OF EXISTING MAINS ARE SHOWN. THE CONTRACTOR SHALL TAKE ALL NECESSARY PRECAUTIONS TO PROTECT EXISTING MAINS AND SERVICES AND MAINTAIN UNINTERRUPTED SUPPLY. ANY DAMAGE INCURRED SHALL BE REPAIRED IMMEDIATELY TO THE SATISFACTION OF THE ENGINEER, AT THE CONTRACTOR'S EXPENSE.
- ALL HORIZONTAL CONTROLS ARE BASED ON MARYLAND STATE COORDINATES.
- ALL VERTICAL CONTROLS ARE BASED ON U.S.C.B.G.S.
- ALL PIPE ELEVATIONS SHOWN ARE INVERT ELEVATIONS.
- CLEAR ALL UTILITIES BY A MINIMUM OF 6". CLEAR ALL POLES BY 2'-0" MINIMUM OR TUNNEL AS REQUIRED. ANY COST INCURRED TO THE CONTRACTOR FOR TUNNELING OR BRACING AT POLES SHALL BE INCLUDED IN UNIT PRICES BID FOR CONSTRUCTION OF THE MAIN.
- FOR DETAILS NOT SHOWN ON THE DRAWINGS USE HOWARD COUNTY STANDARD DETAILS.
- FOR MATERIALS AND CONSTRUCTION METHODS USE HOWARD COUNTY STANDARD SPECIFICATIONS.
- CONTRACTOR SHALL LOCATE EXISTING UTILITIES A MINIMUM OF TWO (2) WEEKS IN ADVANCE OF CONSTRUCTION OPERATIONS IN THE VICINITY OF PROPOSED UTILITIES AT HIS OWN EXPENSE.
- CONTRACTOR SHALL NOTIFY THE FOLLOWING UTILITIES OR AGENCIES AT LEAST FIVE (5) WORKING DAYS BEFORE STARTING WORK SHOWN ON THESE PLANS:
 - BALTIMORE GAS AND ELECTRIC CO - UNDERGROUND ELECTRIC DISTRIBUTION CUSTOMER SERVICE - (685-0123)
 - BALTIMORE GAS AND ELECTRIC CO - UNDERGROUND GAS DISTRIBUTION CUSTOMER SERVICE - (685-0123)
 - ENGINEERING - "DAMAGE CONTROL" - (234-5621)
 - "MISS UTILITY" - (1-559-0100)
 - CHESAPEAKE & POTOMAC (C&P) TELEPHONE COMPANY - (725-9976)
 - BUREAU OF UTILITIES, HOWARD COUNTY - (992-2366)
- TREES ARE TO BE PROTECTED FROM DAMAGE TO MAXIMUM EXTENT. TREES LOCATED WITHIN THE CONSTRUCTION STRIP ARE NOT TO BE REMOVED OR DAMAGED BY THE CONTRACTOR.
- CONTRACTOR SHALL REMOVE TREES, STUMPS AND ROOTS ALONG LINE OF EXCAVATION AS DIRECTED BY THE ENGINEER. PAYMENT FOR SUCH REMOVAL SHALL BE INCLUDED IN THE UNIT PRICE BID FOR CONSTRUCTION OF THE MAIN.
- PLACE REGULATION "MEN WORKING" AND WARNING SIGNS AS REQUIRED TO COMPLY WITH MARYLAND STATE HIGHWAY ADMINISTRATION MANUAL OF TRAFFIC CONTROL FOR HIGHWAY CONSTRUCTION AND MAINTENANCE OPERATIONS.
- ALL WATER MAINS TO HAVE A MINIMUM OF 3'-6" COVER UNLESS OTHERWISE NOTED.
- VALVES ADJACENT TO TREES SHALL BE STRAPPED TO TREES.
- BLOCK ALL FITTINGS WITH CONCRETE.
- BURY LINE ELEVATIONS ON FIRE HYDRANTS SHALL BE SET TO THE ELEVATIONS SHOWN ON THE DRAWINGS.
- ALL FIRE HYDRANTS SHALL BE STRAPPED AND BUTTRESSED WITH CONCRETE IN ACCORDANCE WITH STANDARD DETAILS. SOIL AROUND THE FIRE HYDRANT TO BE COMPACTED IN ACCORDANCE WITH SECTION 37.01 AND 37.05 OF THE STANDARD SPECIFICATIONS.
- ALL WATER HOUSE CONNECTIONS SHALL BE FOR AN INSIDE METER SETTING.
- THE CONTRACTOR SHALL NOT OPERATE ANY WATER MAIN VALVES ON THE EXISTING SYSTEM.
- ALL SEWER MAINS SHALL BE CS.PX., V.C.PX., ACP CLASS 2400, P.V.C. OR HD.P.E. UNLESS OTHERWISE NOTED.
- THE CONTRACTOR SHALL PROVIDE A JOINT IN ALL SEWER MAINS WITHIN 2'-0" OF EXTERIOR MANHOLE WALL.
- ALL MANHOLES SHALL BE 4'-0" INSIDE DIAMETER, UNLESS OTHERWISE NOTED.
- MANHOLES SHOWN WITH 12" AND 16" WALLS ARE BRICK MANHOLES ONLY.
- WATER MAIN AND WATER HOUSE CONNECTION LINES MUST BE PLACED SO AS TO HAVE AT LEAST ONE (1) FOOT SEPARATION FROM THE SEWER MAIN OR SEWER HOUSE CONNECTION AS THEY PASS ABOUT IT.

MIN. CELLAR ELEVATIONS

LOT 1	347.1
LOT 2	347.1
LOT 3	347.1
LOT 4	344.9
LOT 5	343.9
LOT 6	338.5
LOT 7	330.0
LOT 8	331.4



PROFILE
 SCALE: HOR 1" = 100'
 VERT 1" = 10'

THIS DEVELOPMENT PLAN IS APPROVED FOR EROSION AND SEDIMENT CONTROL BY HOWARD SOIL CONSERVATION DISTRICT.

APPROVED: *[Signature]* 1-25-83
 HOWARD SOIL CONSERVATION DISTRICT DATE 1/25/83

SEDIMENT CONTROL MEASURES FOR THIS CONTRACT WILL BE IMPLEMENTED IN ACCORDANCE WITH ARTICLE 15 OF THESE SPECIFICATIONS AND ALSO AS SHOWN ON THE GRADING AND SEDIMENT CONTROL PLAN P-83-45

REVIEWED FOR HOWARD COUNTY SOIL CONSERVATION DISTRICT AND MEETS TECHNICAL REQUIREMENTS

DATE 4-4-84 NO. 1 REVISION LOCATION OF SHC LOT 6 & LOT 5 REVISION MIN. CELLAR ELEV. LOT 6 & LOT 5

QUANTITIES

ITEM	EST'D	AS-BUILT	SUPPLIER
8" SEWER	408 L.F.	402.3	ACP J-M CO.
6" SEWER	258 L.F.	271	ACP J-M CO.
MANHOLE	2 EA.	2	TERRE HILL
6" WATER	160 L.F.	175.3	DIP U.S. PIPE
FIRE HYD.	1 EA.	1	U.S. PIPE
1" WHC	108 L.F.	123'-5"	HOWELL METAL
1/2" WHC	70 L.F.	81'-0"	HOWELL METAL

STATE OF MARYLAND
 PROFESSIONAL ENGINEER
 TERRELL A. FISHER #9757 DATE 1/16/83

DEPARTMENT OF PUBLIC WORKS
 HOWARD COUNTY, MARYLAND
 DIRECTOR OF PUBLIC WORKS: *[Signature]* 1-28-83
 CHIEF, BUREAU OF UTILITIES: *[Signature]* 1-26-83
 CHIEF, BUREAU OF ENGINEERING: *[Signature]* 1-28-83
 CHIEF, LAND DEVELOPMENT DIVISION: *[Signature]* 1-28-83

FISHER, COLLINS AND CARTER, INC.
 CIVIL ENGINEERS AND LAND SURVEYORS
 8388 COURT AVENUE
 ELLICOTT CITY, MARYLAND 21043

CONTRACT NO. 14-1089-D

PLAN, PROFILE AND DETAILS
 WATER AND SEWER MAINS

WOODLAND PARK - SECTION ONE
 WATER AND SEWER MAIN EXTENSIONS
 HOWARD COUNTY, MARYLAND
 ELECTION DISTRICT 5

DRAWING NO. 1 OF 1
 SCALE AS SHOWN
 DES: D.B.S.
 DRN: D.B.S.
 CHK: T.A.F.

JANUARY 12, 1983

AS-BUILT JULY, 1983