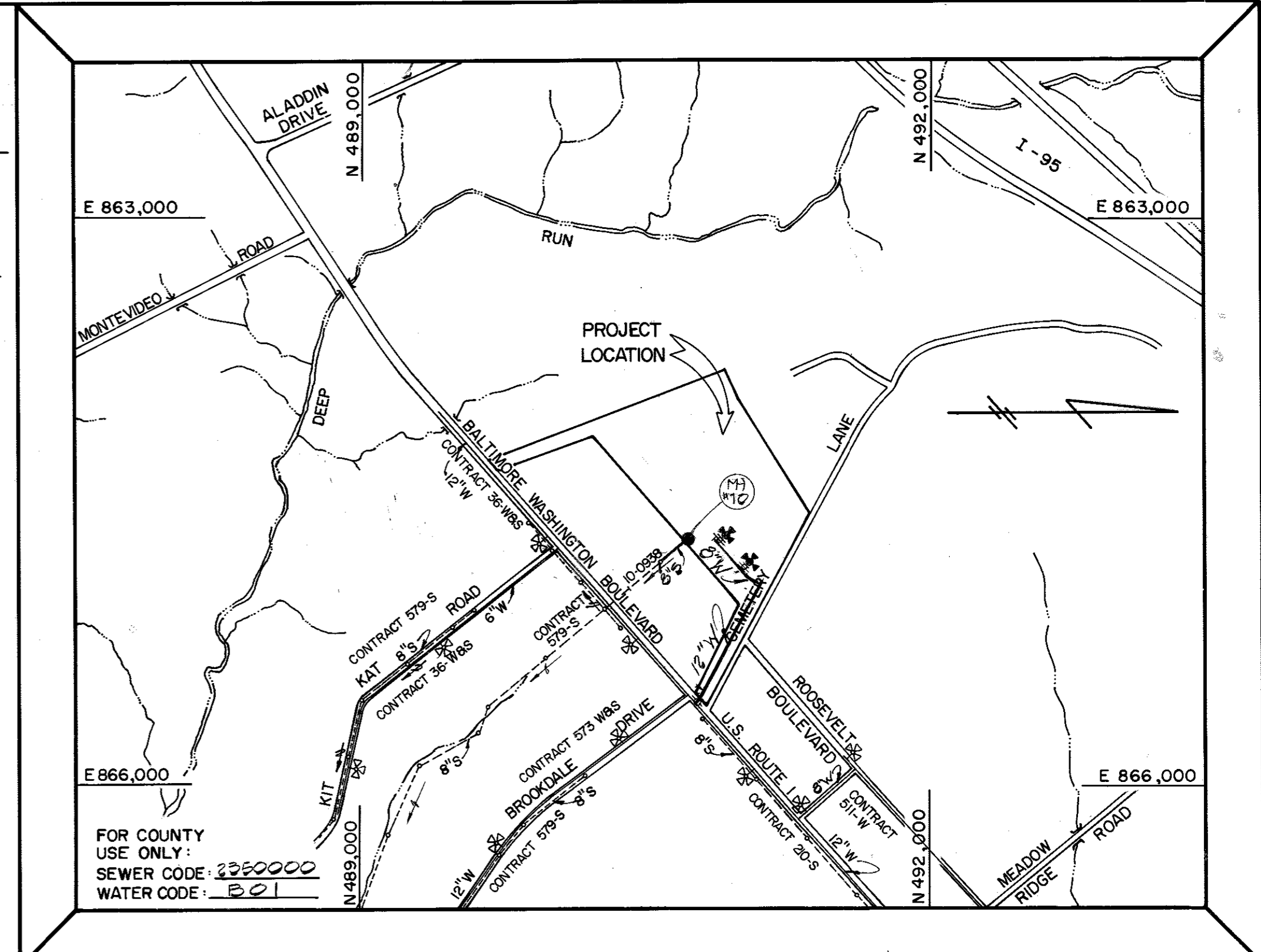


BENCH MARKS

B.M.#1	ELEV. 210.21
2.2" SPIKE IN 16" LOGS, IN CEMETERY LANE 100' WEST OF U.S.#1	
B.M.#2	ELEV. 210.02
2.2" SPIKE IN 40" OAK, 60' NW OF ROOSEVELT BLVD & CEMETERY LANE - 12' OFF NORTH SIDE CEMETERY LANE	
B.M.#3	ELEV. 206.91
PIE NAIL SET IN MORTAR JOINT NW CORNER OF EX. LUSKING'S WAREHOUSE BUILDING	



TYPE OF BUILDING: OFFICE & GARAGE
 TOTAL NUMBER OF LOTS: 1
 NUMBER OF WATER HOUSE CONNECTIONS: 1
 NUMBER OF SEWER HOUSE CONNECTIONS: 1
 DRAINAGE AREA: PATAPSCO

VICINITY MAP
 SCALE: 1" = 600'

GENERAL NOTES

- APPROXIMATE LOCATION OF EXISTING MAINS ARE SHOWN. THE CONTRACTOR SHALL TAKE ALL NECESSARY PRECAUTIONS TO PROTECT EXISTING MAINS AND SERVICES AND MAINTAIN UNINTERRUPTED SUPPLY. ANY DAMAGE INCURRED SHALL BE REPAIRED IMMEDIATELY TO THE SATISFACTION OF THE ENGINEER, AT THE CONTRACTOR'S EXPENSE.
- ALL HORIZONTAL CONTROLS ARE BASED ON MARYLAND STATE COORDINATES.
- ALL VERTICAL CONTROLS ARE BASED ON U.S.C. & G.S. DATUM.
- ALL PIPE ELEVATIONS SHOWN ARE INVERT ELEVATIONS.
- CLEAR ALL UTILITIES BY A MINIMUM OF 6". CLEAR ALL POLES BY 2'-0" MINIMUM OR TUNNEL AS REQUIRED. ANY COST INCURRED TO THE CONTRACTOR FOR TUNNELING OR BRACING AT POLES SHALL BE INCLUDED IN UNIT PRICES BID FOR CONSTRUCTION OF THE MAIN.
- FOR DETAILS NOT SHOWN ON THE DRAWINGS USE HOWARD COUNTY STANDARD DETAILS.
- FOR MATERIALS AND CONSTRUCTION METHODS USE HOWARD COUNTY STANDARD SPECIFICATIONS.
- CONTRACTOR SHALL LOCATE EXISTING UTILITIES A MINIMUM OF TWO (2) WEEKS IN ADVANCE OF CONSTRUCTION OPERATIONS IN THE VICINITY OF PROPOSED UTILITIES AT HIS OWN EXPENSE.
- CONTRACTOR SHALL NOTIFY THE FOLLOWING UTILITIES OR AGENCIES AT LEAST FIVE (5) WORKING DAYS BEFORE STARTING WORK SHOWN ON THESE PLANS:
 STATE HIGHWAY ADMINISTRATION - (301-383-4435)
 BALTIMORE GAS AND ELECTRIC CO. - UNDERGROUND ELECTRIC DISTRIBUTION
 CUSTOMER SERVICE - (685-0123)
 BALTIMORE GAS AND ELECTRIC CO. - UNDERGROUND GAS DISTRIBUTION
 CUSTOMER SERVICE - (685-0123)
 ENGINEERING - "DAMAGE CONTROL" - (234-5621)
 MISS UTILITY - (1-559-0000)
 CHESAPEAKE & POTOMAC (C&P) TELEPHONE COMPANY - (725-9976)
 BUREAU OF UTILITIES, HOWARD COUNTY - (992-2366)
- TREES ARE TO BE PROTECTED FROM DAMAGE TO MAXIMUM EXTENT. TREES LOCATED WITHIN THE CONSTRUCTION STRIP ARE NOT TO BE REMOVED OR DAMAGED BY THE CONTRACTOR.
- CONTRACTOR SHALL REMOVE TREES, STUMPS AND ROOTS ALONG LINE OF EXCAVATION AS DIRECTED BY THE ENGINEER. PAYMENT FOR SUCH REMOVAL SHALL BE INCLUDED IN THE UNIT PRICE BID FOR CONSTRUCTION OF THE MAIN.
- PLACE REGULATION "MEN WORKING" AND WARNING SIGNS AS REQUIRED TO COMPLY WITH MARYLAND STATE HIGHWAY ADMINISTRATION MANUAL OF TRAFFIC CONTROL FOR HIGHWAY CONSTRUCTION AND MAINTENANCE OPERATIONS. ALL WATER MAINS TO BE D.I.P. UNLESS OTHERWISE NOTED.
- TOP OF ALL WATER MAINS TO HAVE A MINIMUM OF 3'-6" COVER UNLESS OTHERWISE NOTED.
- VALVES ADJACENT TO TEES SHALL BE STRAPPED TO TEES.
- BLOCK ALL FITTINGS WITH CONCRETE IN ACCORDANCE WITH STANDARD DETAILS.
- BURY LINE ELEVATIONS ON FIRE HYDRANTS SHALL BE SET TO THE ELEVATIONS SHOWN ON THE DRAWINGS.
- ALL FIRE HYDRANTS SHALL BE STRAPPED AND BUTTRESSED WITH CONCRETE IN ACCORDANCE WITH STANDARD DETAILS. SOIL AROUND THE FIRE HYDRANT TO BE COMPACTED IN ACCORDANCE WITH SECTION 37.01 AND 37.05 OF THE STANDARD SPECIFICATIONS.
- ALL WATER HOUSE CONNECTIONS SHALL BE FOR AN INSIDE METER SETTING.
- THE CONTRACTOR SHALL NOT OPERATE ANY WATER MAIN VALVES ON THE EXISTING SYSTEM.
- ALL SEWER MAINS SHALL BE C.S.P.X., V.C.P.X., A.C.P. CLASS 2400, P.V.C. UNLESS OTHERWISE NOTED.
- THE CONTRACTOR SHALL PROVIDE A JOINT IN ALL SEWER MAINS WITHIN 2'-0" OF EXTERIOR MANHOLE WALL.
- ALL MANHOLES SHALL BE 4'-0" INSIDE DIAMETER, UNLESS OTHERWISE NOTED.
- MANHOLES SHOWN WITH 12" AND 16" WALLS ARE BRICK MANHOLES ONLY.
- WATER MAIN AND WATERHOUSE CONNECTION LINES MUST BE PLACED SO AS TO HAVE AT LEAST ONE (1) FOOT SEPARATION FROM THE SEWER MAIN OR SEWER HOUSE CONNECTION AS THEY PASS ABOUT IT.

REVISIONS

NO.	DATE	INDICATE & DENOTE RECONNECTED WHC
1	8/6/82	

PLAN
 1" = 50'



DEPARTMENT OF PUBLIC WORKS
 HOWARD COUNTY, MARYLAND
 Director of Public Works: *Terrell A. Pender* 8-19-82
 Chief, Bureau of Engineering: *William J. Rowe* 8/19/82
 Chief, Bureau of Utilities: *Richard M. Bennett* 8-19-82
 Chief, Land Development Division: *William J. Rowe* 8-19-82

SEDIMENT CONTROL MEASURES FOR THIS CONTRACT WILL BE IMPLEMENTED IN ACCORDANCE WITH THE PROVISIONS OF THESE SPECIFICATIONS AND ALSO AS SHOWN ON THE GRADING & SEDIMENT CONTROL PLAN, S.D.P. NO. 82-148

REVIEWED FOR HOWARD COUNTY SOIL CONSERVATION DISTRICT AND MEETS TECHNICAL REQUIREMENTS.
 Approved: *William J. Rowe* 8/17/82
 HOWARD SOIL CONSERVATION SERVICE DATE

THIS DEVELOPMENT IS APPROVED FOR EROSION AND SEDIMENT CONTROL BY THE HOWARD SOIL CONSERVATION DISTRICT.
 Approved: *William J. Rowe* 8-17-82
 HOWARD SOIL CONSERVATION DISTRICT DATE

FISHER, COLLINS AND CARTER, INC.
 CIVIL ENGINEERS AND LAND SURVEYORS
 8388 COURT AVENUE
 ELLICOTT CITY, MARYLAND 21043

CONTRACT NO. 14-1074-D

REVISIONS

NO.	DATE	DESCRIPTION
1	10-10-82	REVISE BURY LINE ELEVATION, ADJUST PROP. GRADE OVER MAIN AND WATER MAIN ELEVATIONS, RELOCATE 2" WHC

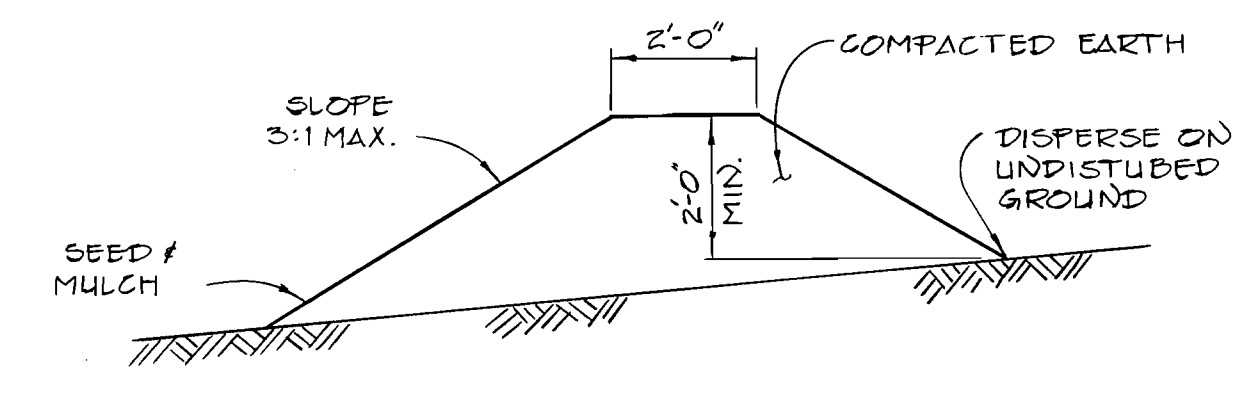
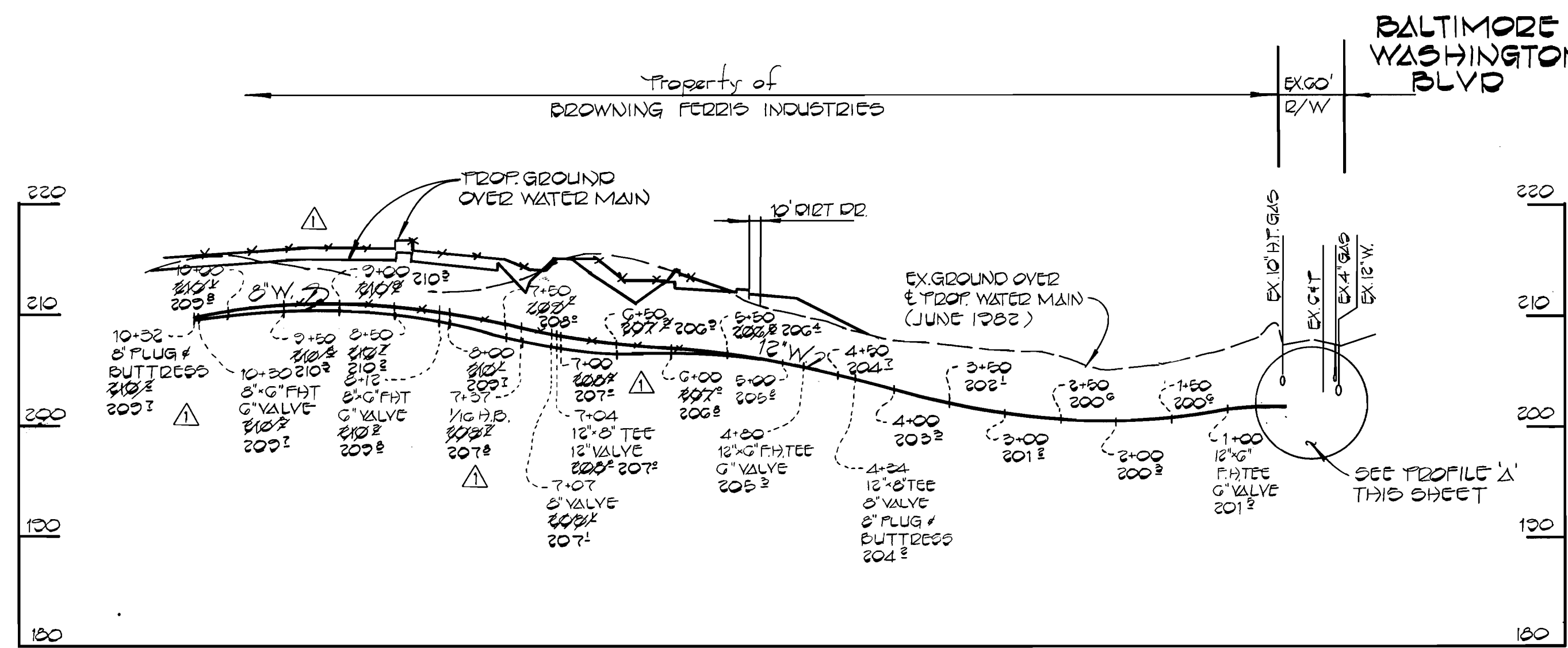
PLAN
WATER AND SEWER MAINS

QUANTITIES				QUANTITIES			
ITEM	EST'D	AS-BUILT	SUPPLIER	ITEM	EST'D	AS-BUILT	SUPPLIER
8" SEWER	120 LF	120 LF	PVC. AIP	F. HYDRANT	4 EA	4 EA	AIP
6" SEWER	12 LF	12 LF	PVC. AIP	8" VALVES	2 EA	2 EA	AIP
MANHOLE	1 EA	1 EA	PRECAST	12" VALVES	1 EA	1 EA	AIP
8" WATER	320 LF	320 LF	D.I.P. AIP				
6" WATER	35 LF	35 LF	D.I.P. AIP				
2" WHC VALVE	10 LF	11 LF					
6" F.H. VALVES	4 EA	4 EA	AIP				
12" WATER	704 LF	706 LF	D.I.P. AIP				
12" TS 8" V	1 EA	1 EA	AIP				

BROWNING - FERRIS INDUSTRIES
WATER AND SEWER MAIN EXTENSION
ELECTION DISTRICT NO. 1

CONTRACT NO. 14-1074-D
 BROWNING-FERRIS INDUSTRIES
 WATER AND SEWER MAIN
 EXTENSION
 TAX MAP 43
 PARCEL 15

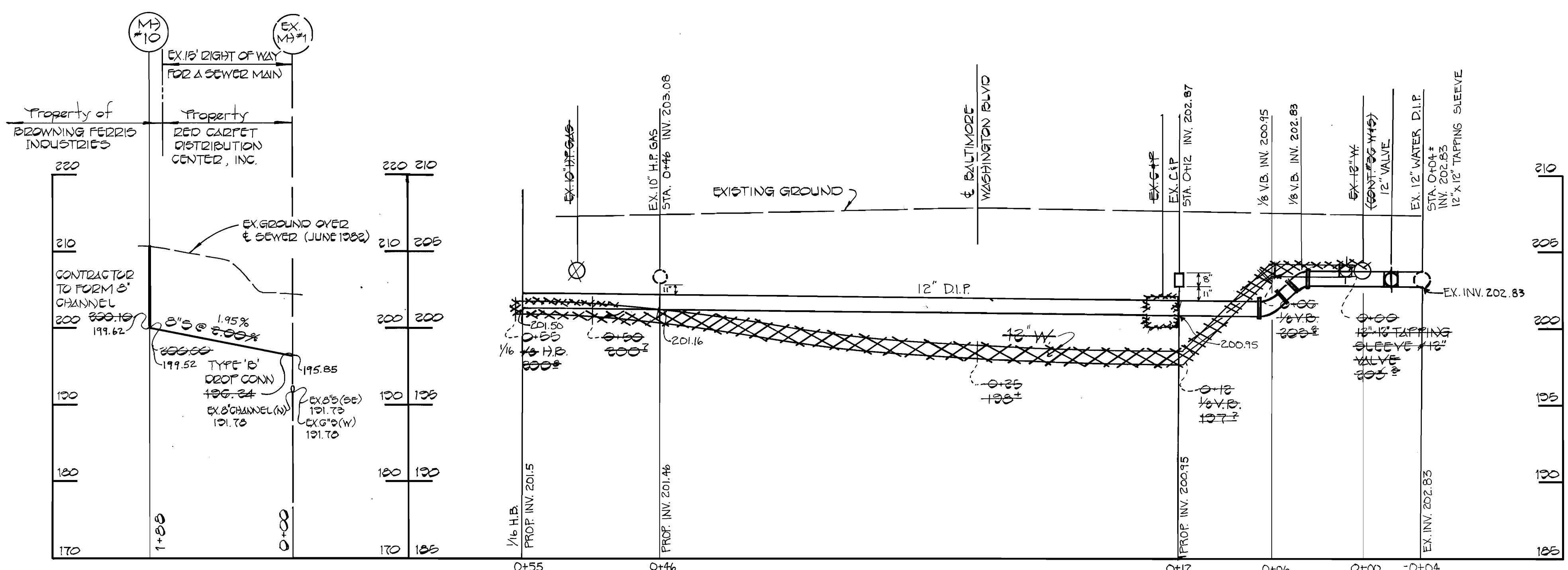
DRAWING NO. 1 OF 2
 SCALE: AS SHOWN
 DES: D.B.S.
 DRN: D.B.S.
 CHK: T.A.F.



TEMPORARY EARTH DIVERSION BERM
NO SCALE

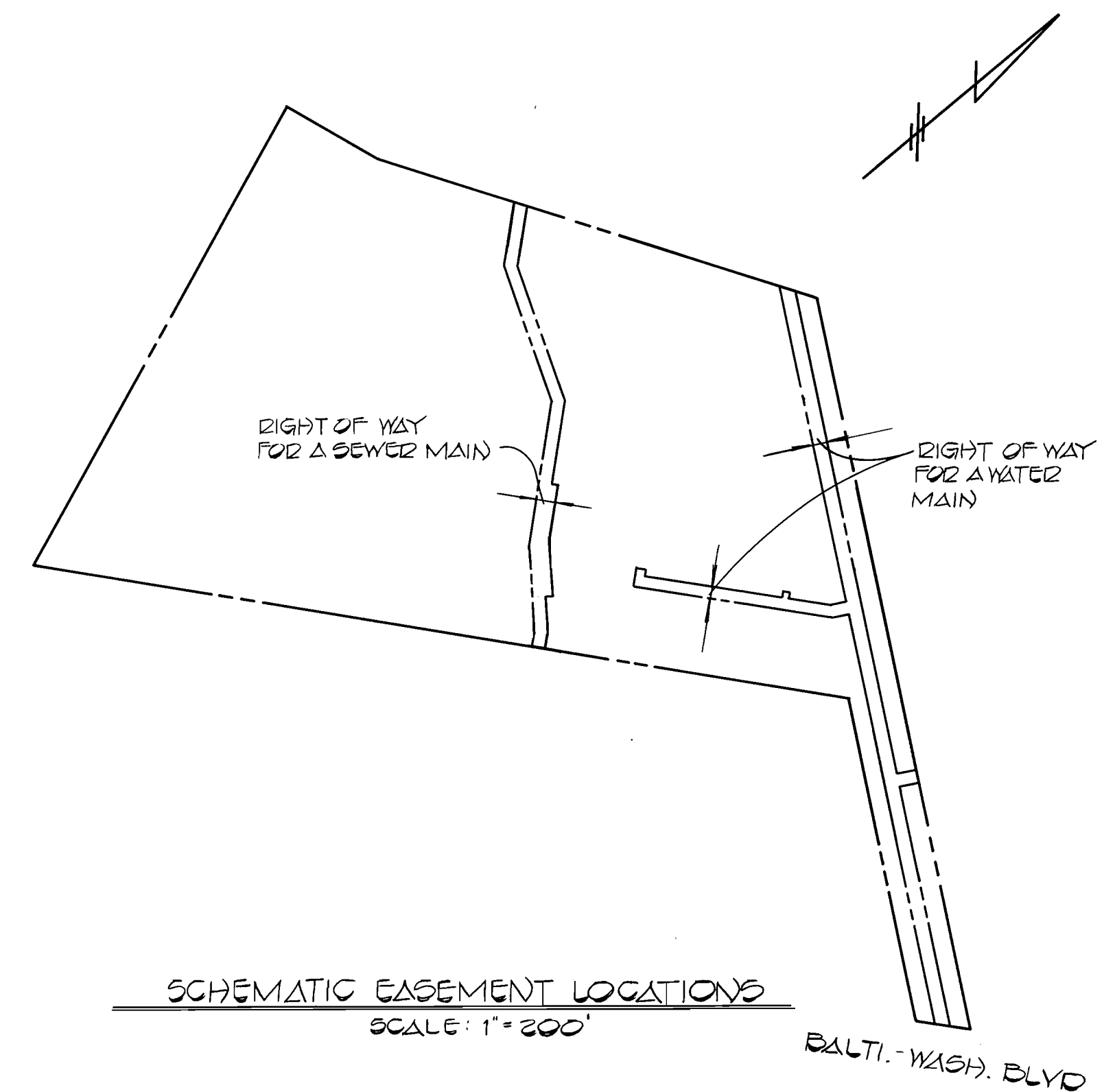
DIVERSION BERMS ARE REQUIRED EVERY 250 FEET ON CONTINUOUS SLOPES OF 4% OR GREATER. THE BERMS SHALL CONFORM TO THE TYPICAL SECTION SHOWN HEREON AND SHALL BE CONSTRUCTED ACROSS THE CONSTRUCTION AREAS IMMEDIATELY AFTER THE BACKFILLING OF THE PIPE TRENCH AND PRIOR TO PLACING STABILIZATION IN ORDER TO PREVENT EROSION OF THE BACKFILLED AREAS.

PROFILE
SCALE: HOR. 1"=100'
VERT. 1"=10'



PROFILE
SCALE: HOR. 1"=100'
VERT. 1"=10'

PROFILE 'A'
SCALE: HOR. 1"=5'
VERT. 1"=5'



SCHEMATIC EASEMENT LOCATIONS
SCALE: 1"=200'



Terrell A. Fisher
TERRELL A. FISHER, P.E.

DEPARTMENT OF PUBLIC WORKS
HOWARD COUNTY, MARYLAND

Director of Public Works: *Devin Nemy* 8-20-82
 Chief, Bureau of Engineering: *William R. R... 8/11/82*
 Chief, Bureau of Utilities: *Robert M. Reinger* 8-19-82
 Chief, Land Development Division: *W... 8-9-82*

FISHER, COLLINS AND CARTER, INC.
CIVIL ENGINEERS AND LAND SURVEYORS
8388 COURT AVENUE
ELLCOTT CITY, MARYLAND 21043

CONTRACT NO. 14-1074-D

PROFILE & DETAILS
WATER AND SEWER MAINS

REVISIONS		
NO.	DATE	DESCRIPTION
1	10-12-82	REVISE BURY LINE ELEVATION, ADJUST PROF. GRADE OVER MAIN AND WATER MAIN ELEVATIONS, RELOCATE 2" WVC

BROWNING - FERRIS INDUSTRIES
WATER AND SEWER MAIN EXTENSION
ELECTION DISTRICT NO. 1

CONTRACT NO. 14-1074-D
BROWNING-FERRIS INDUSTRIES
WATER AND SEWER MAIN
EXTENSION
TAX MAP 43
PARCEL 1E

DES: D.B.S.
DRN: D.B.S.
CHK: T.A.F.

DRAWING NO. 2 OF 2
SCALE: AS SHOWN

AUGUST 13, 1982

AS-BUILT JULY, 1985