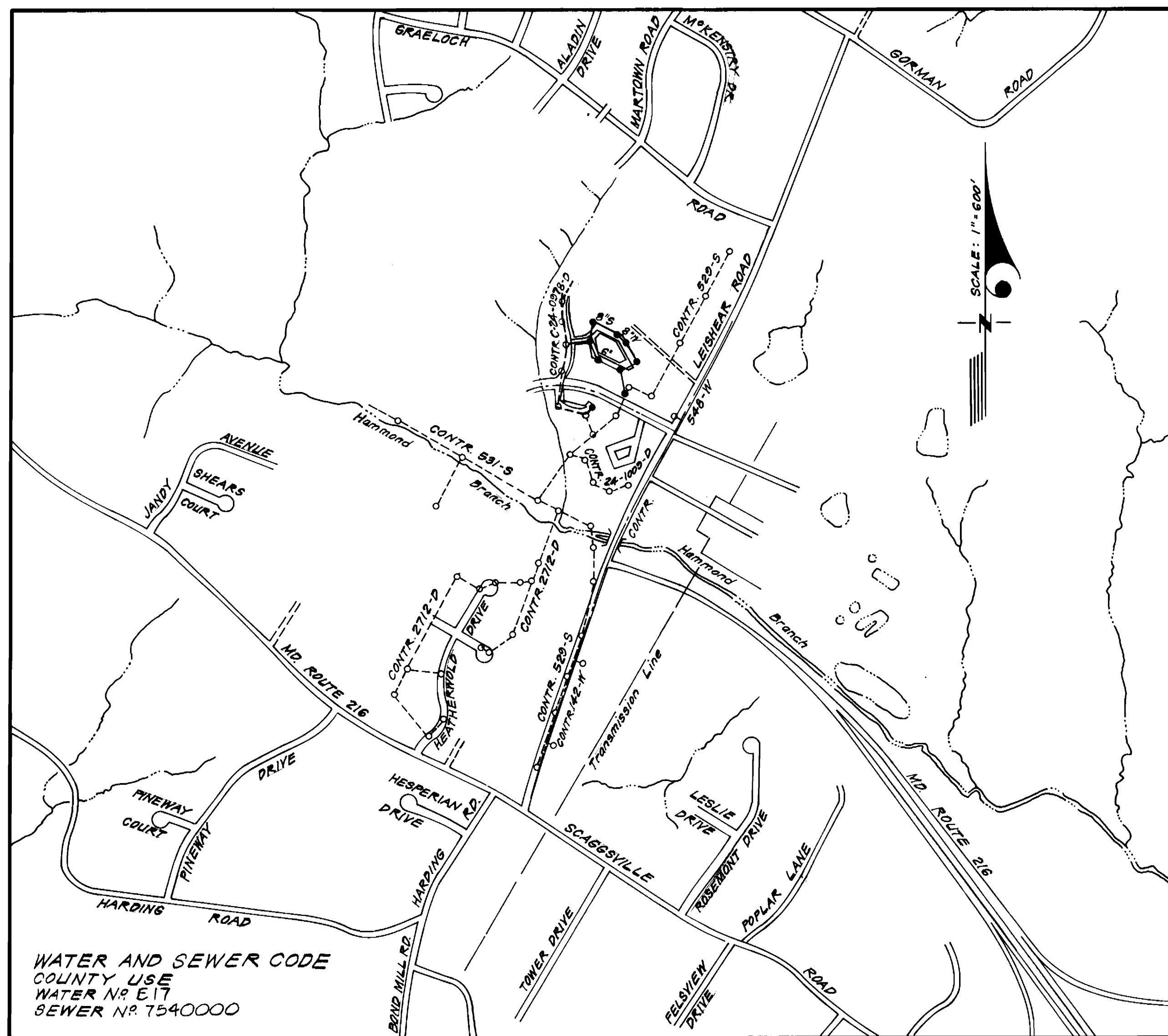


Type of Buildings	Townhouses
Number of Lots	76
Number of Water House Connections	76
Number of Sewer House Connections	76
Drainage Area	Little Patuxent River



VICINITY MAP
SCALE: 1"=600'

GENERAL NOTES

- Approximate location of existing mains are shown. The contractor shall take all necessary precautions to protect existing mains and services and maintain uninterrupted supply. Any damage incurred shall be repaired immediately to the satisfaction of the inspector, at the contractor's expense.
- All horizontal controls are based on Maryland State Coordinates.
- All vertical controls are based on U.S.G.S. Datum.
- All pipe elevations shown are invert elevations.
- Clear all utilities by a minimum of 6" clear all poles by 2'-0" minimum or tunnel as required. Any cost incurred to the contractor for tunneling or bracing at poles shall be included in unit prices bid for excavation and backfill.
- For details not shown on the drawings use Howard County Standard Details.
- For materials and construction methods use Howard County Standard Specifications.
- Contractor shall locate existing utilities a minimum of two (2) weeks in advance of construction operations in the vicinity of proposed utilities at his own expense.
- Contractor shall notify the following utilities or agencies at least five (5) working days before starting work shown on these plans.
 - State Highway Administration - 531-5533
 - Baltimore Gas & Electric Company - Underground Electric Distribution Customer Service - 685-0123
 - Baltimore Gas & Electric Company - Underground Gas Distribution Customer Service - 685-0123
 - Engineering - Damage Control - 234-5621
 - Miss Utility - 1-559-0100
 - Chesapeake & Potomac (C & P) Telephone Company - 725-9976
 - American Telephone and Telegraph - Cable Location Division - 393-3553
 - Colonial Pipeline Company - 781-4641
 - Bureau of Utilities Howard County - 992-2366
- Trees are to be protected from damage to maximum extent. Trees located within the construction strip are not to be removed or damaged by the contractor.
- Contractor shall remove trees, stumps, and roots along line of excavation as directed by the Inspector. Payment for such removal shall be included in the unit price bid for excavation and backfill.
- Place regulation "Men Working" and warning signs as required to comply with Maryland State Highway Administration Manual of Traffic Control for Highway Construction and Maintenance Operations.
- All water mains to be C.I.P. or D.I.P. unless otherwise noted.
- Top of all water mains to have a minimum of 3-1/2' cover unless otherwise noted.
- Valves adjacent to tees shall be strapped to tees.
- Block all fittings with concrete.
- Bury line elevations on fire hydrants shall be set to the elevations shown on the drawings. All fire hydrants shall be strapped and buttressed with concrete in accordance with standard details. Soil around the fire hydrant to be compacted in accordance with Section 5-15 of the Standard Specifications.
- All water house connections shall be for an inside meter setting.
- The contractor shall not operate any water main valves on the existing system.
- All sewer mains shall be C.S.P.X., V.C.P.X., P.V.C., or A.C.P. Class 2400 unless otherwise noted.
- The contractor shall provide a joint in all sewer mains within 2'-0" of exterior manhole wall.
- All manholes shall be 4'-0" inside diameter, unless otherwise noted.
- Water main and water house connection lines must have a minimum of one foot separation from the sanitary sewer and sewer house connections as they cross. Except at crossings, water and sewer lines shall have a minimum horizontal separation of 10'.
- The sanitary tees and stubs provided under contract 24-0978 D are to be utilized for SHCs off of Ex. Sewer. Lots 7 thru 32 shall be served in this manner. Lots 5 and 6 will require a cast iron saddle as indicated.

Sediment Control Measures will be implemented in accordance with Article No. 15 of the Specifications & with Road Construction Plan F. 82-72 ; Drawing 5 , Sediment & Erosion Control.

REVIEWED FOR HOWARD SOIL CONSERVATION DISTRICT AND MEETS TECHNICAL REQUIREMENT

James M. Bellamy 1/12/82
SIGNATURE DATE

U.S. SOIL CONSERVATION SERVICE

This Development Plan is approved for Soil Erosion and Sediment Control by the Howard Soil Conservation District.

APPROVED:
William J. Rowe 8-12-82
Howard S.C.D. DATE

CONTRACT NO.24-1073-D W&S

MURRAY HILL

**HOWARD COUNTY, MARYLAND
DEPARTMENT OF PUBLIC WORKS**

QUANTITIES			
ITEM	BID	AS-BUILT	MATERIALS/SUPPLIER
6" W	891	8 917 L.F.	D.I.P. U.S. PIPE
8" W	1402	1,391 L.F.	D.I.P. U.S. PIPE
8" S	1213	1,168 L.F.	V.C.P.X. SUPERIOR CLAY CORP.
F.H.	3	3	A.P. SMITH - U.S. PIPE
6" V Excluding F.H.V.	3	3	U.S. PIPE
8" V	4	4	U.S. PIPE
12" W	291	295 L.F.	D.I.P. U.S. PIPE
M.H.'s		8	TERRE-HILL CONCRETE PROD.



W. J. Rowe
1-5-82

DEPARTMENT OF PUBLIC WORKS
HOWARD COUNTY, MARYLAND
William F. Nalley 8-25-82 DIRECTOR OF PUBLIC WORKS-DATE
Robert M. Bunn 8-13-82 CHIEF BUREAU OF ENGINEERING-DATE
William F. Nalley 8-24-82 CHIEF, BUREAU OF UTILITIES-DATE
William F. Nalley 8-24-82 CHIEF, LAND DEVELOPMENT DIVISION-DATE

CONTRACT NO. 24-1073-D

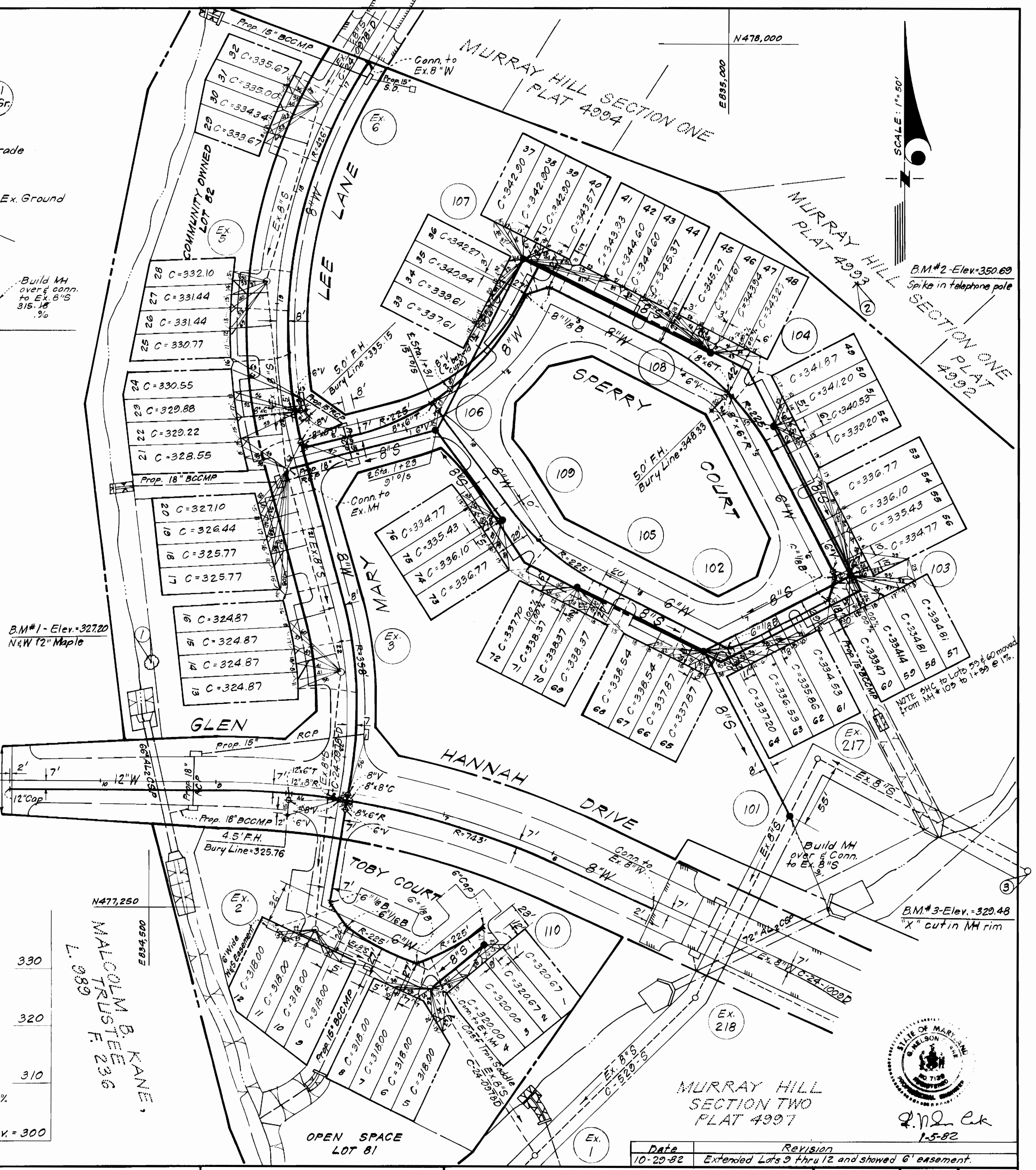
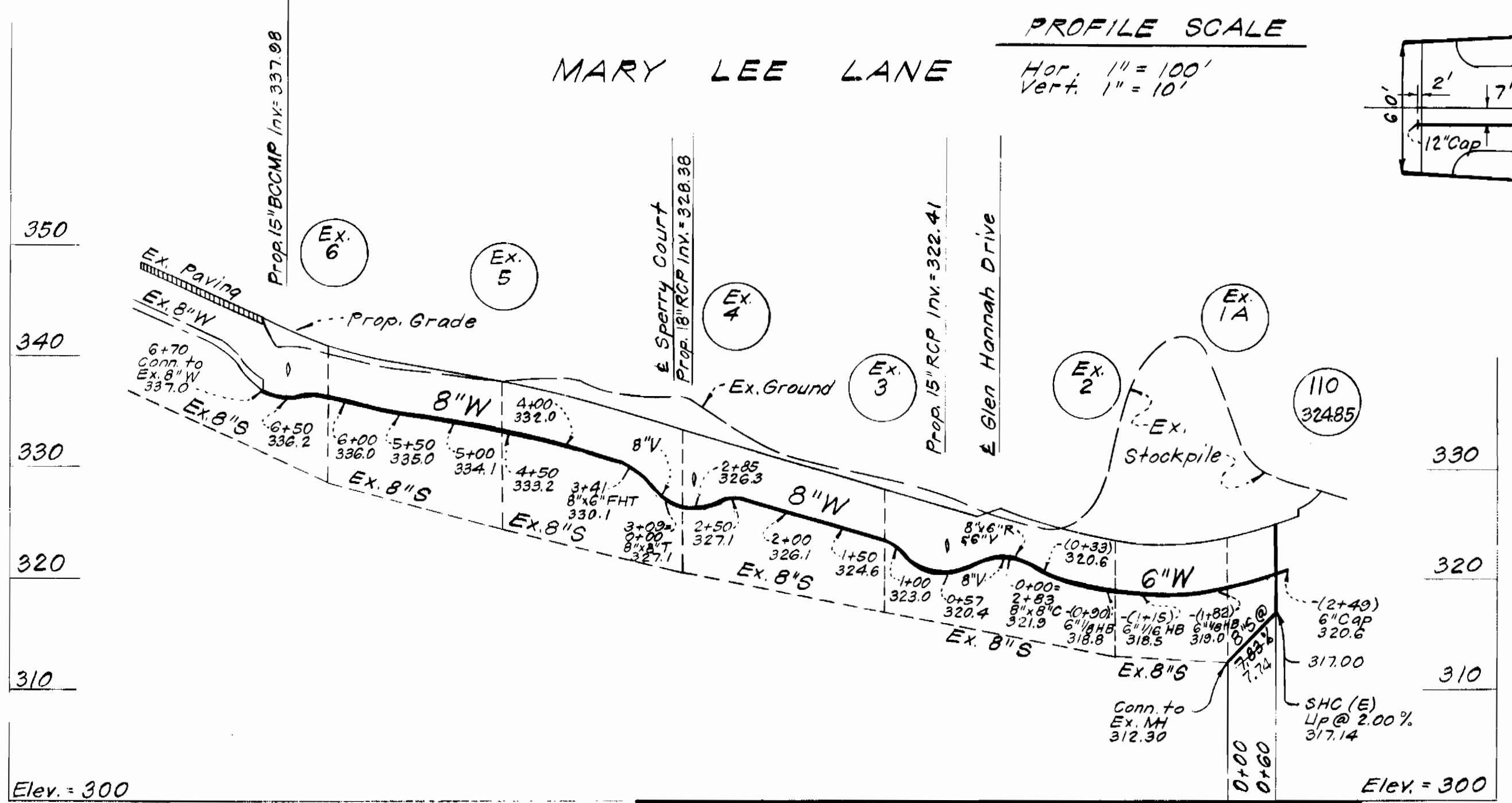
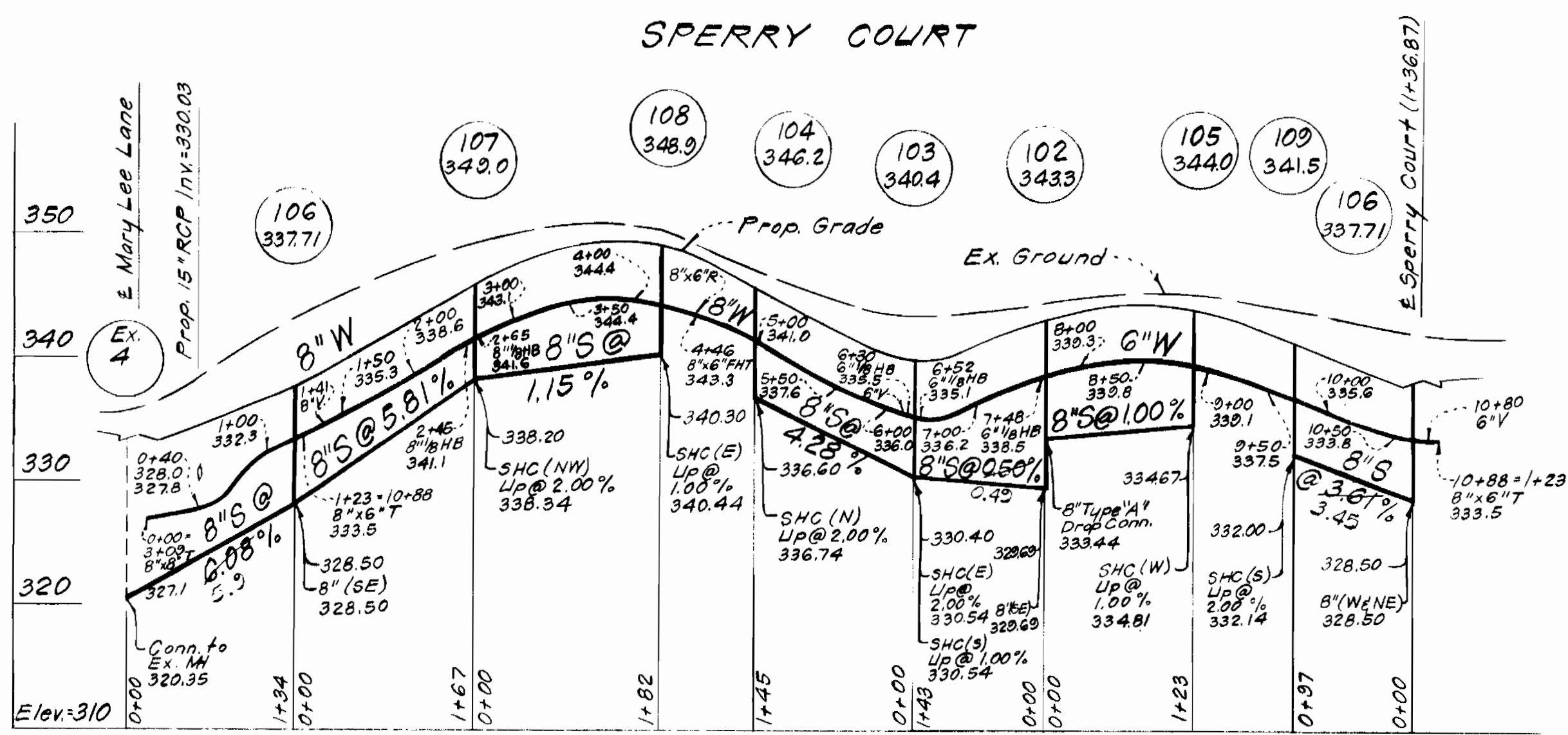
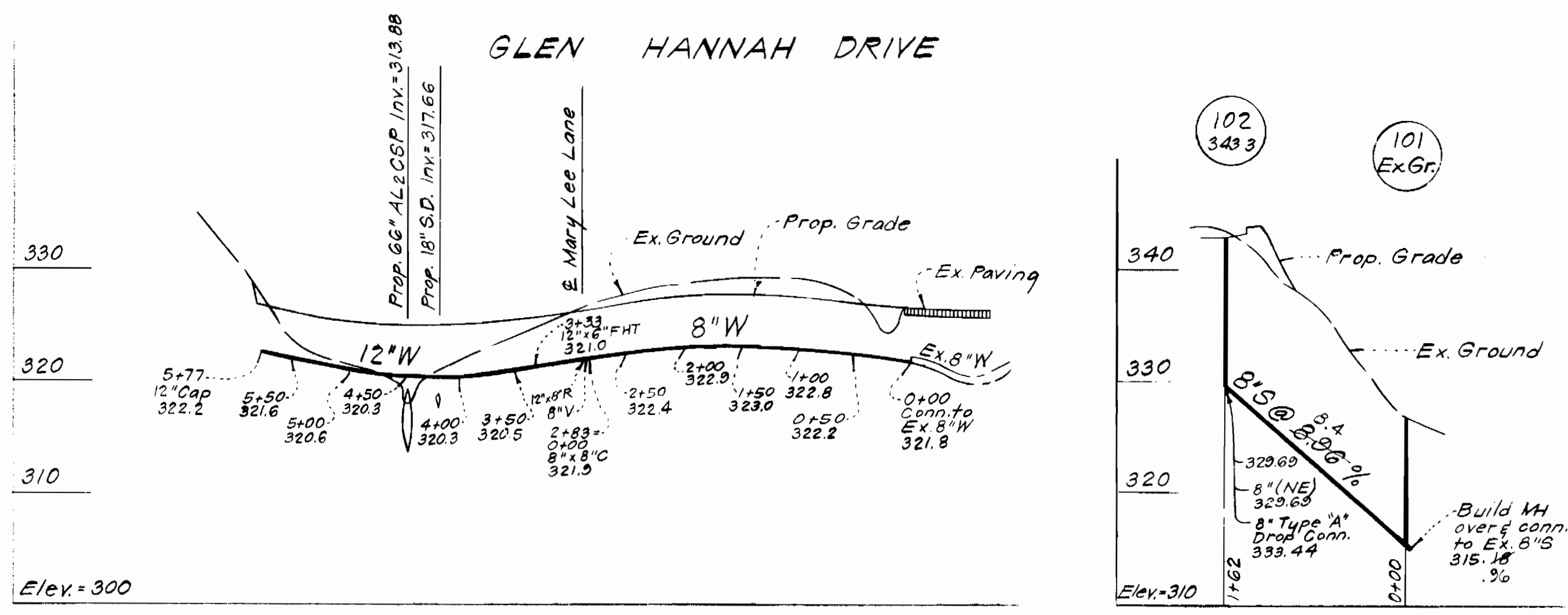
TITLE SHEET

MURRAY HILL
SECTION THREE AREA ONE
6TH ELECTION DISTRICT

DRAWING NO. 1 OF 2 SCALE As Shown

CLARK • FINEFROCK & SACKETT
ENGINEERS • PLANNERS • SURVEYORS
11315 LOCKWOOD DRIVE • SILVER SPRING, MARYLAND • (301) 593-3400

AS-BUILT 5-5-88



DEPARTMENT OF PUBLIC WORKS
HOWARD COUNTY, MARYLAND

Director of Public Works - DATE 8-25-82
Chief, Bureau of Engineering - DATE
Chief, Bureau of Utilities - DATE
Chief, Land Development - DATE

CONTRACT NO. 24-1073-D

PLAN & PROFILES OF WATER & SEWER MAINS

MURRAY HILL SECTION THREE AREA ONE
6TH ELECTION DISTRICT

DRAWING NO. 2 OF 2 SCALE As Shown

Date	Revision
10-29-82	Extended Lots 9 thru 12 and showed 6' easement.

CLARK • FINEFROCK & SACKETT
ENGINEERS • PLANNERS • SURVEYORS
11315 LOCKWOOD DRIVE • SILVER SPRING, MARYLAND (301) 593-3400

AS BUILT 5-9-83