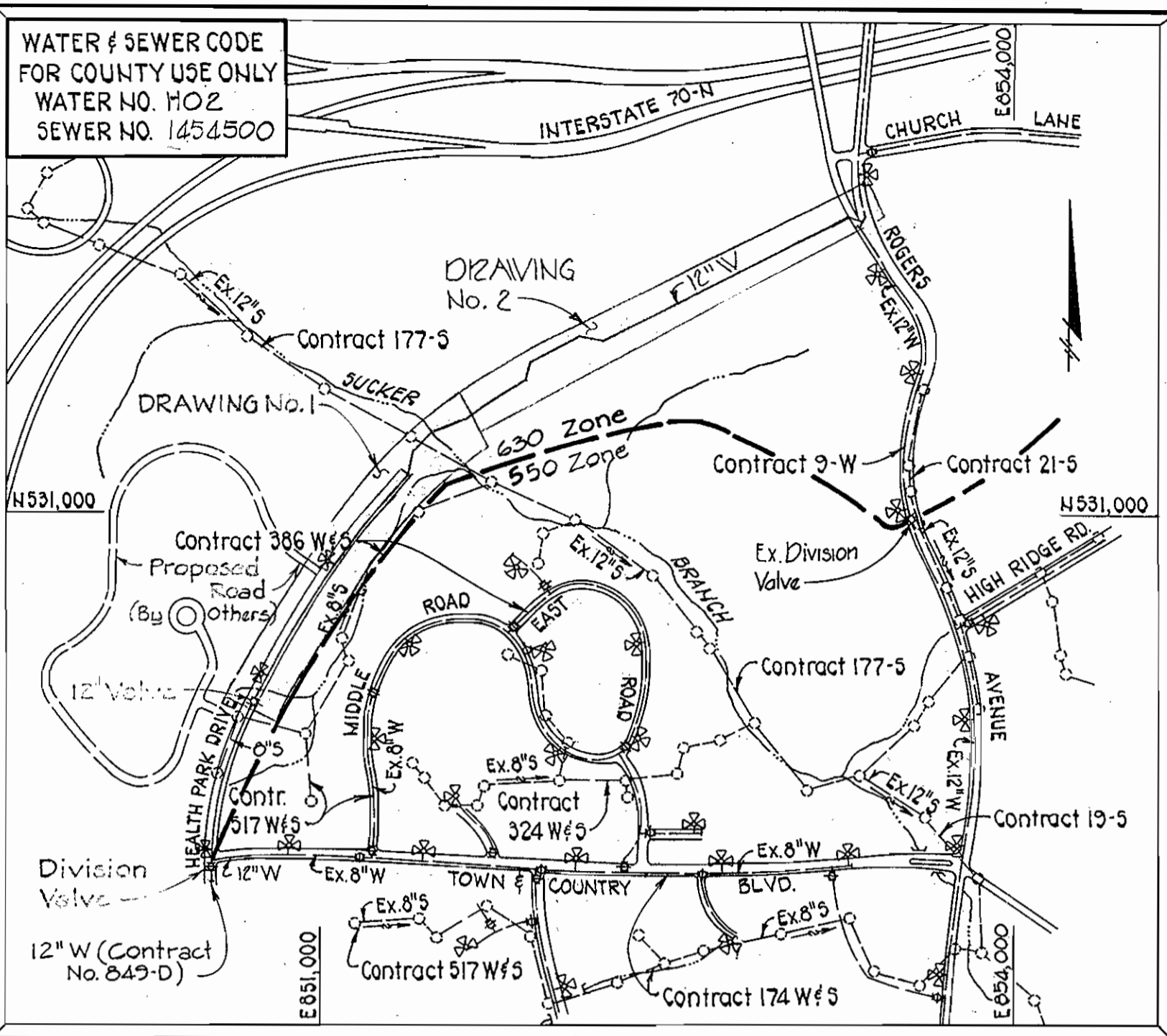


1063/1 WS

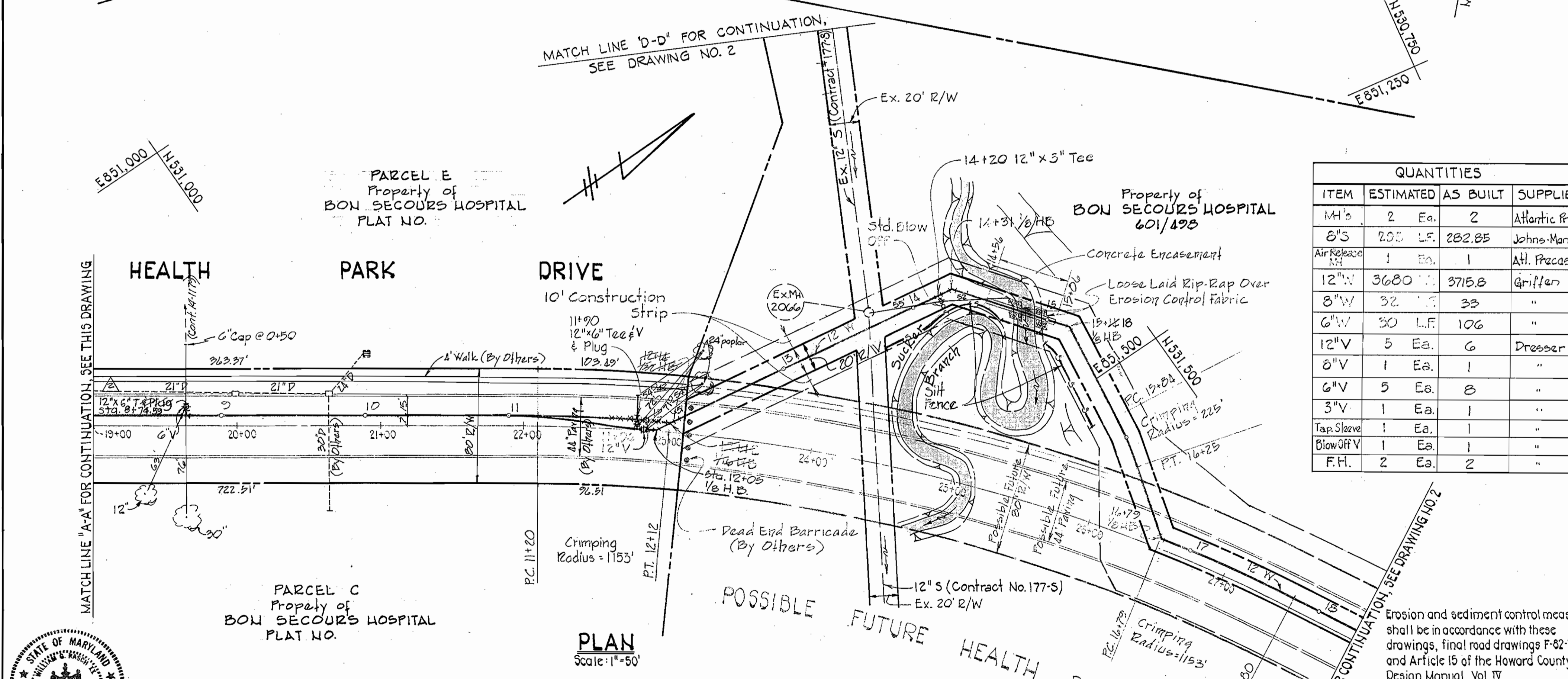
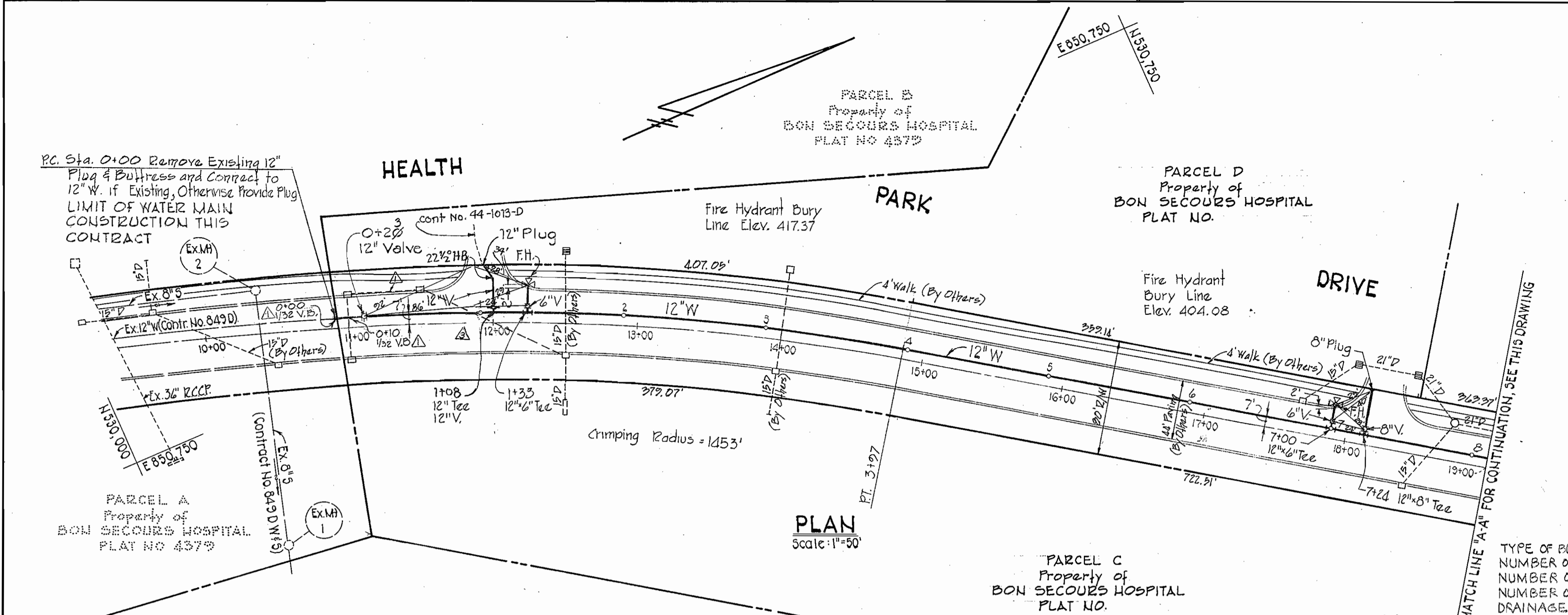


WATER & SEWER CODE FOR COUNTY USE ONLY
 WATER NO. 1102
 SEWER NO. 1454500

GENERAL NOTES
 Scale: 1"=600'

- The approximate locations of existing mains are shown. The Contractor shall take all necessary precautions to protect existing mains and services and maintain uninterrupted supply. Any damage incurred shall be repaired immediately to the satisfaction of the Engineer at the Contractor's expense.
- All horizontal controls are based on Maryland State Coordinates.
- All vertical controls are based on U.S.G.S. Datum.
- All pipe elevations shown are invert elevations.
- All utilities shall be cleared by a minimum of 6". All poles shall be cleared by 2'-0" minimum tunneled as required. Any cost incurred by the Contractor for tunneling or bracing at poles shall be included in the unit prices bid for construction of water mains and sewer mains.
- For details not shown on the drawings use Howard County Standard Details.
- For materials and construction methods use Howard County Standard Specifications.
- The Contractor shall locate existing utilities a minimum of two (2) weeks in advance of construction operations in the vicinity of proposed utilities at his expense.
- The Contractor shall notify the following utilities or agencies at least five (5) working days before starting work shown on these plans:
 - State Highway Administration - 531-5533
 - Baltimore Gas & Electric Company - Underground Electric Distribution Customer Service - 685-0123
 - Baltimore Gas & Electric Company - Underground Gas Distribution Customer Service - 685-0123
 - Engineering - "Damage Control" - 235-5621
 - "Miss Utility" - 1-559-0100
 - Chesapeake & Potomac (C&P) Telephone Company - 725-9976
 - American Telephone and Telegraph - Cable Location Division - 393-3553
 - Colonial Pipeline Company - 781-4641
 - Bureau of Utilities - Howard County - 992-2366
- Trees shall be protected from damage to the maximum extent. Trees located within the construction strips are not to be removed or damaged by the Contractor.
- The Contractor shall remove trees, stumps and roots along the line of excavation as directed by the Engineer. Payment for such removal shall be included in the unit prices bid for construction of water mains and sewer mains.
- The Contractor shall place regulation "Men Working" and warning signs as required to comply with Maryland State Highway Administration Manual of Traffic Control for Highway Construction and Maintenance Operations.
- All water mains shall be C.I.P. or D.I.P. unless otherwise noted.
- The top of all water mains shall have a minimum of 3'-6" cover unless otherwise noted.
- Valves adjacent to trees shall be strapped to trees.
- All fittings shall be blocked with concrete.
- Bury line elevations on fire hydrants shall be set to the elevations shown on the drawings. All fire hydrants shall be strapped and buttressed with concrete in accordance with standard details. Soil around the fire hydrant to be compacted in accordance with Article 37.01-3(15) of the Standard Specifications.
- All sewer mains shall be C.S.P.X., V.C.P.X., P.V.C., or A.C.P. Class 2400 unless otherwise noted.
- The Contractor shall provide a joint in all sewer mains within 2'-0" of exterior manhole walls.

QUANTITIES			
ITEM	ESTIMATED	AS BUILT	SUPPLIER
MH's	2 Ea.	2	Atlantic Precast
8" S	202 LF.	282.85	Johns-Manville
Air Release V	1 Ea.	1	A.H. Precast
12" W	3680	3715.8	Gritter
8" W	32	33	"
6" W	30 LF.	106	"
12" V	5 Ea.	6	Dresser
8" V	1 Ea.	1	"
6" V	5 Ea.	8	"
3" V	1 Ea.	1	"
Tap Sleeve	1 Ea.	1	"
Blow Off V	1 Ea.	1	"
F.H.	2 Ea.	2	"



William G. Neuman
 William G. Neuman II
 Date

DEPARTMENT OF PUBLIC WORKS
 HOWARD COUNTY, MARYLAND
 DIRECTOR OF PUBLIC WORKS: *John F. Neuman* 9-7-82
 CHIEF - BUREAU OF UTILITIES: *Richard B. Rouse* 9-3-82
 CHIEF - BUREAU OF ENGINEERING: *William G. Neuman* 9-3-82
 CHIEF - LAND DEVELOPMENT: *William G. Neuman* 9-3-82

NO.	DATE	REVISION
2-13-88		Rev. 12" x 12" Tee V Location
6-9-88		ADD. 12" x 6" Tee & Plug
10-23-88		ADD. 8" S.D. PIPE, ADD. V3/8 H.B.'S

PURDUM & JESCHKE
 ENGINEERS
 1023 N. CALVERT ST.
 BALTIMORE, MARYLAND

CONTRACT NO. 14-1063-D

VICINITY MAP AND
 PLAN OF WATER & SEWER MAINS

HOWARD SOIL CONSERVATION DISTRICT
 Reviewed For Howard Soil Conservation District and Meets Technical Requirements.
James M. Helmer 9/1/82
 Signature Date
 This Development Plan is Approved For Soil Erosion and Sediment Control by the Howard Soil Conservation District.
James M. Helmer 9/1/82
 Signature Date
 Howard Soil Conservation District

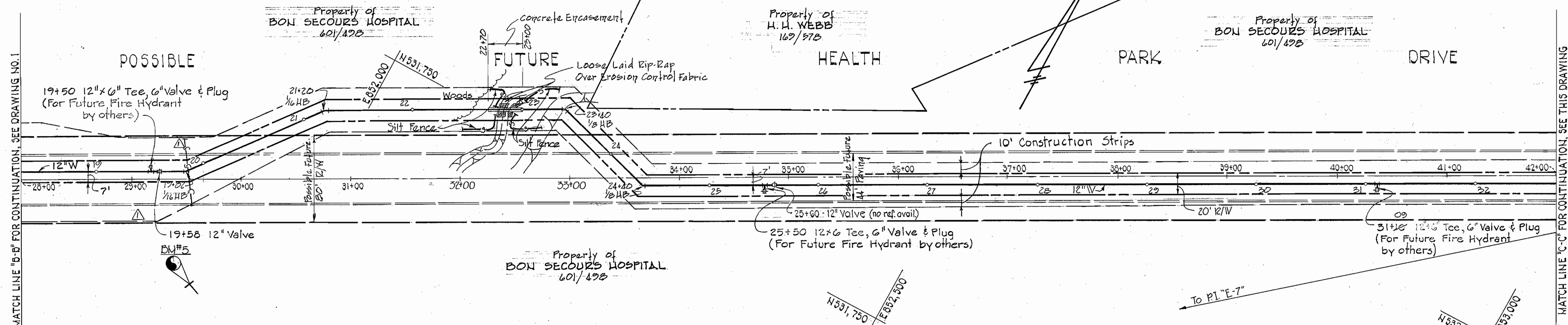
BON SECOURS HEALTH PARK
 WATER MAIN & SEWER EXTENSION
 ELECTION DISTRICT NO. 2
 HOWARD COUNTY, MARYLAND

CONTRACT NO. 14-1063-D
 BON SECOURS HEALTH PARK
 WATER MAIN & SEWER EXTENSION

DRAWING NO. 1	SCALE AS SHOWN	Designed: REP
OF 3		Drafted: PWR
		Checked: REP

MATCH LINE "B-B" FOR CONTINUATION, SEE DRAWING NO. 1

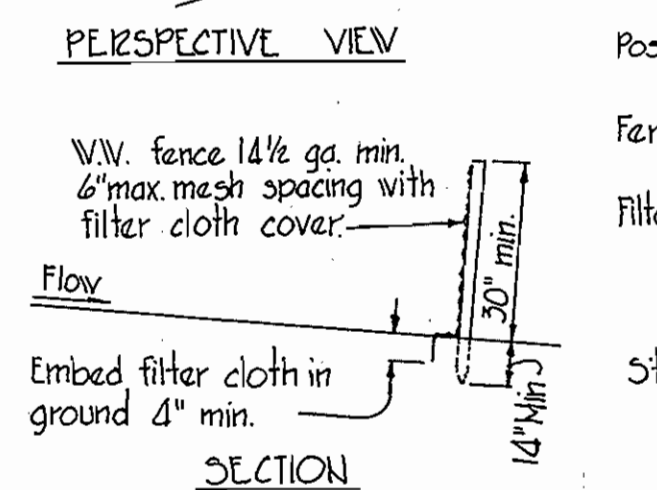
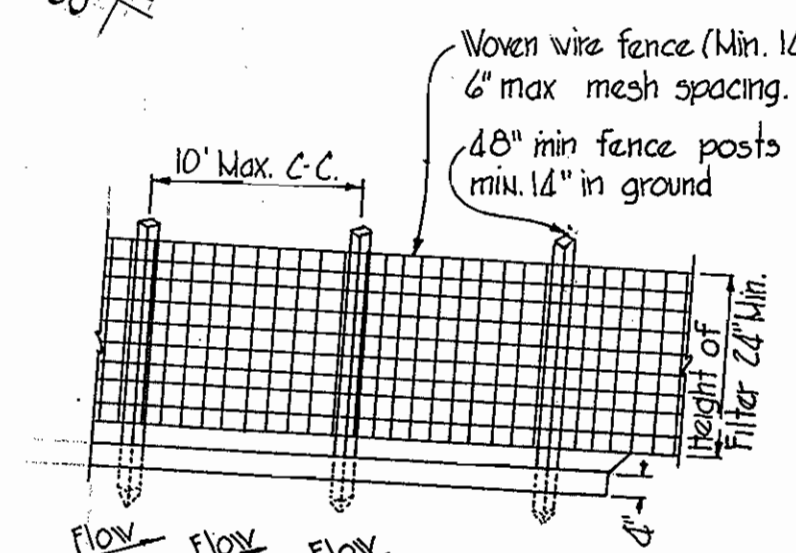
MATCH LINE "C-C" FOR CONTINUATION, SEE THIS DRAWING



Note:
Contractor shall locate Ex. 12" Water Main prior to Constructing 12" Water Main between Sta. 33+00 and 36+00 Cost for this item shall be included in the Unit Price Bid for Furnishing 12" Water Main.

PLAN
Scale: 1" = 50'

BENCH MARKS
 BM#15 371.13
 RAILROAD SPIKE IN UTILITY POLE 75'± RIGHT OF FUTURE ROAD & STATION 29+50
 BM#18 452.26
 RAILROAD SPIKE IN C&P POLE #75, 71'± EAST OF P.I. E-6.



SILT FENCE DETAIL
NO SCALE

CONSTRUCTION NOTES
 1. Woven wire fence to be fastened securely to fence posts with wire ties or staples.
 2. Filter cloth to be fastened securely to woven wire fence with wire ties spaced every 24" at top and mid section.

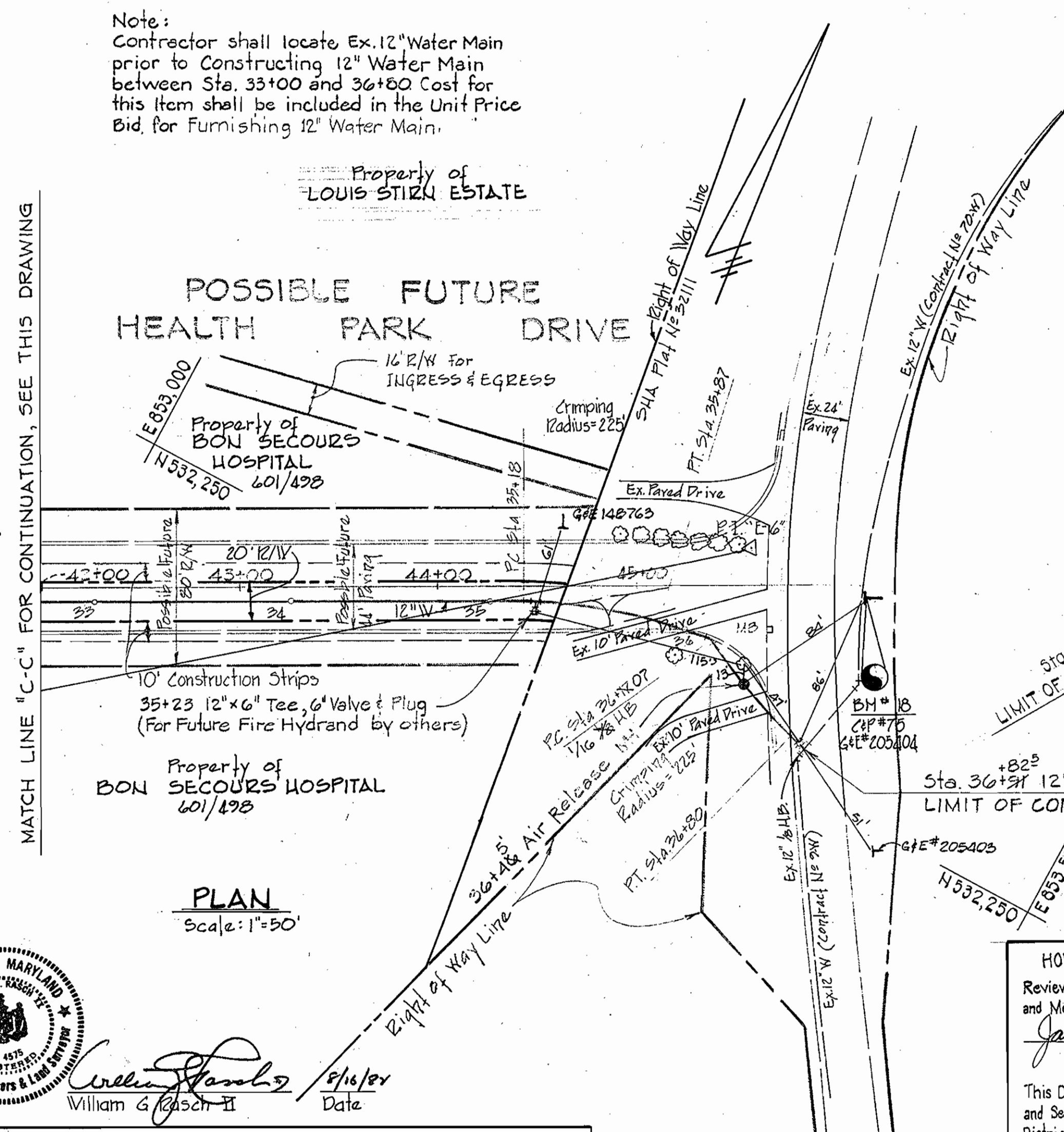
Posts: Steel either T or U type or 2" hardwood.
 Fence: Woven wire, 1/4" gage max 6" mesh opening.
 Filter Cloth: Filter X; Mirifi 100X, Laurel Erosion Control Cloth, Bidim, Polyfilter X or equal.

Standard Symbol:

SEDIMENT CONTROL NOTES

- The developer shall notify the Howard County Office of Inspection and permits at least 24 hours prior to beginning any construction shown hereon (992-2435 or 992-2436).
- All graded areas shall be stabilized in accordance with the U.S.D.A. Soil Conservation Service "Standards and Specifications for Soil Erosion and Sediment Control in Developing Areas," and the following:
 - Soil Amendments:
 - Dolomitic limestone at 90 lbs./1000 SF.
 - Commercial fertilizer 10-10-10 at 25 lbs./1000 SF.
 - Seeding:
 - Seed Mixtures:
 - Slopes flatter than 3:1 - Table 51-1, Mix No. 1 Kentucky 31 Tall Fescue at 1.5 lbs./1000 SF.
 - Slopes steeper than 3:1 - Table 51-1 Mix No. 7 Kentucky 31 Tall Fescue at 1 lb./1000 SF & Crownvatch, inoculated at 0.5 lb./1000 SF.
 - Sowing: Use mechanical broadcast seeders or hydro seeder.
 - Mulching: Straw at 90 lbs./1000 SF. with liquid asphalt or emulsified asphalt binder or cellulose fiber mulch spread by hydroseeder at 35 lbs./1000 SF.
- All stockpiles shall be protected with silt fence or other.
- All excess excavated materials removed from the site shall be deposited in a spoil area with an approved erosion and sediment control plan.
- Construction Sequence:
 - Clear area to be graded and install sediment control structures indicated on plan.
 - Strip topsoil and stockpile for spreading on disturbed areas after completing of grading operations.
 - Complete excavation as indicated. Begin excavation for "Permanent Excavation Section" at W.L. Sta. 20+00 and work toward W.L. Sta. 16+00. Maintain drainage in excavated area to silt fence.
 - Install water line.
 - Spread topsoil and stabilize all disturbed area with seeding.
 - Remove silt fence when seeding is established.

MATCH LINE "C-C" FOR CONTINUATION, SEE THIS DRAWING



PLAN
Scale: 1" = 50'

HOWARD SOIL CONSERVATION DISTRICT
 Reviewed For Howard Soil Conservation District and Meets Technical Requirements.
 Signature: *James M. Nelson* Date: 9/2/82
 This Development Plan is approved For Soil Erosion and Sediment Control By the Howard Soil Conservation District.
 Approved: *W. T. Rowe* 9-1-82
 Howard Soil Conservation District Date



William G. Jeschke II 9/16/82
 Date

DEPARTMENT OF PUBLIC WORKS
 HOWARD COUNTY, MARYLAND
 Director: *W. F. Neimann* 9-7-82
 Chief - Bureau of Utilities: *Robert M. Reisinger* 9-3-82
 Chief - Bureau of Engineering: *William G. Jeschke II* 9-3-82
 Chief - Land Development: *William G. Jeschke II* 9-3-82

PURDUM & JESCHKE
 ENGINEERS
 1023 N. CALVERT ST.
 BALTIMORE, MARYLAND

CONTRACT NO. 14-1063-D

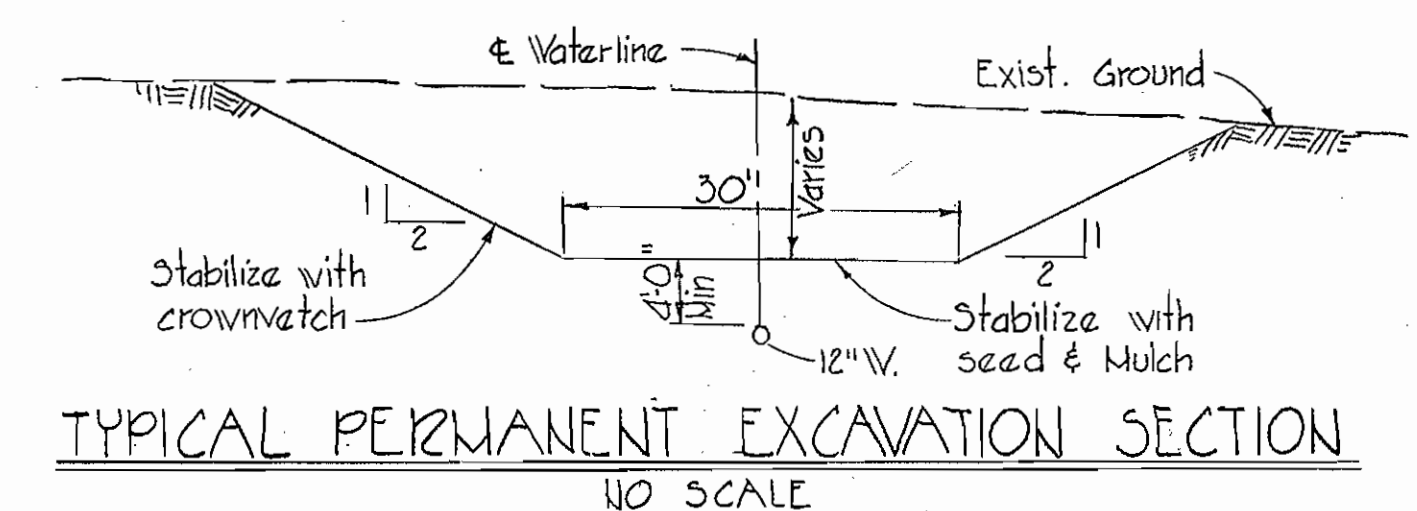
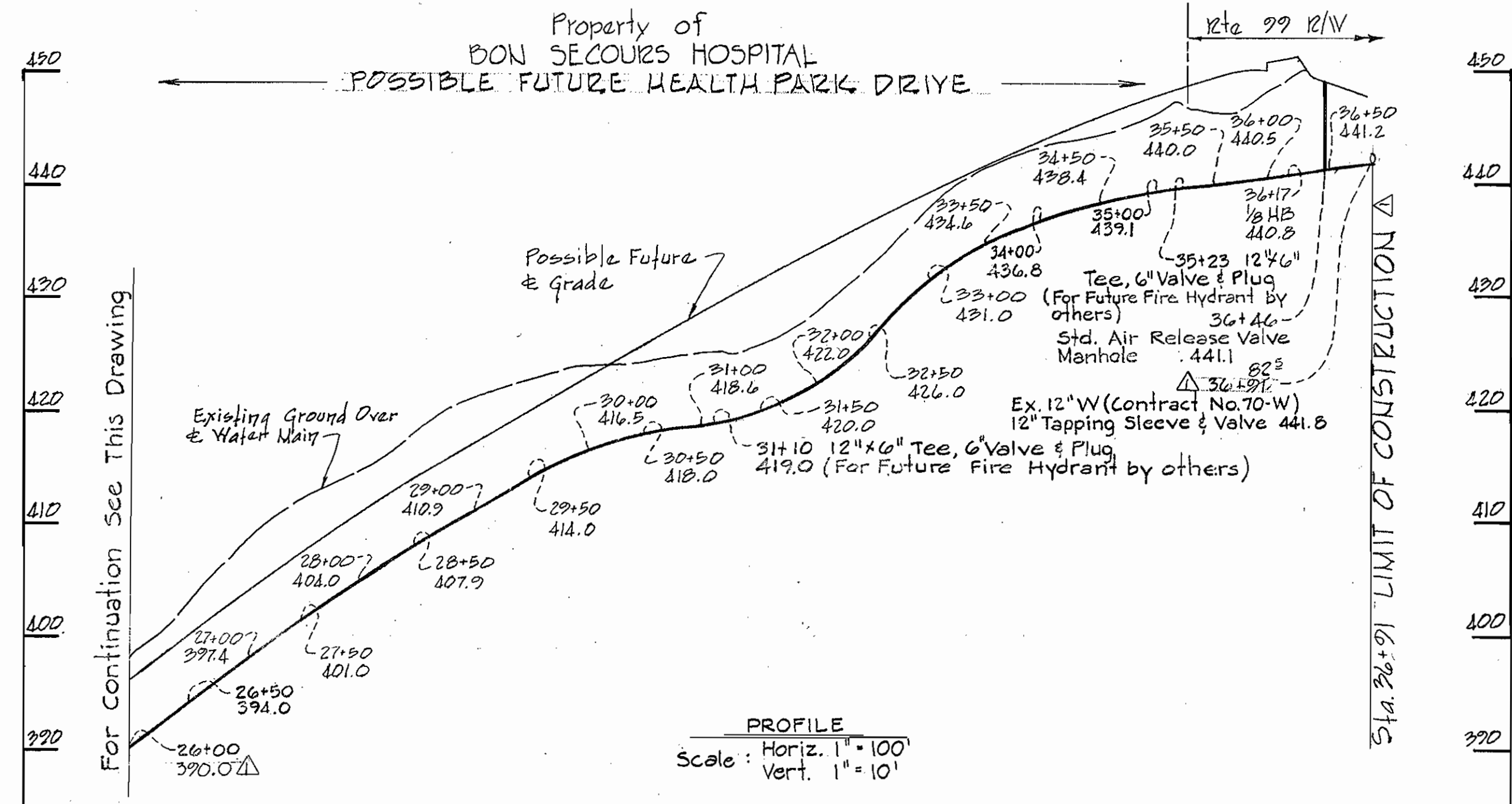
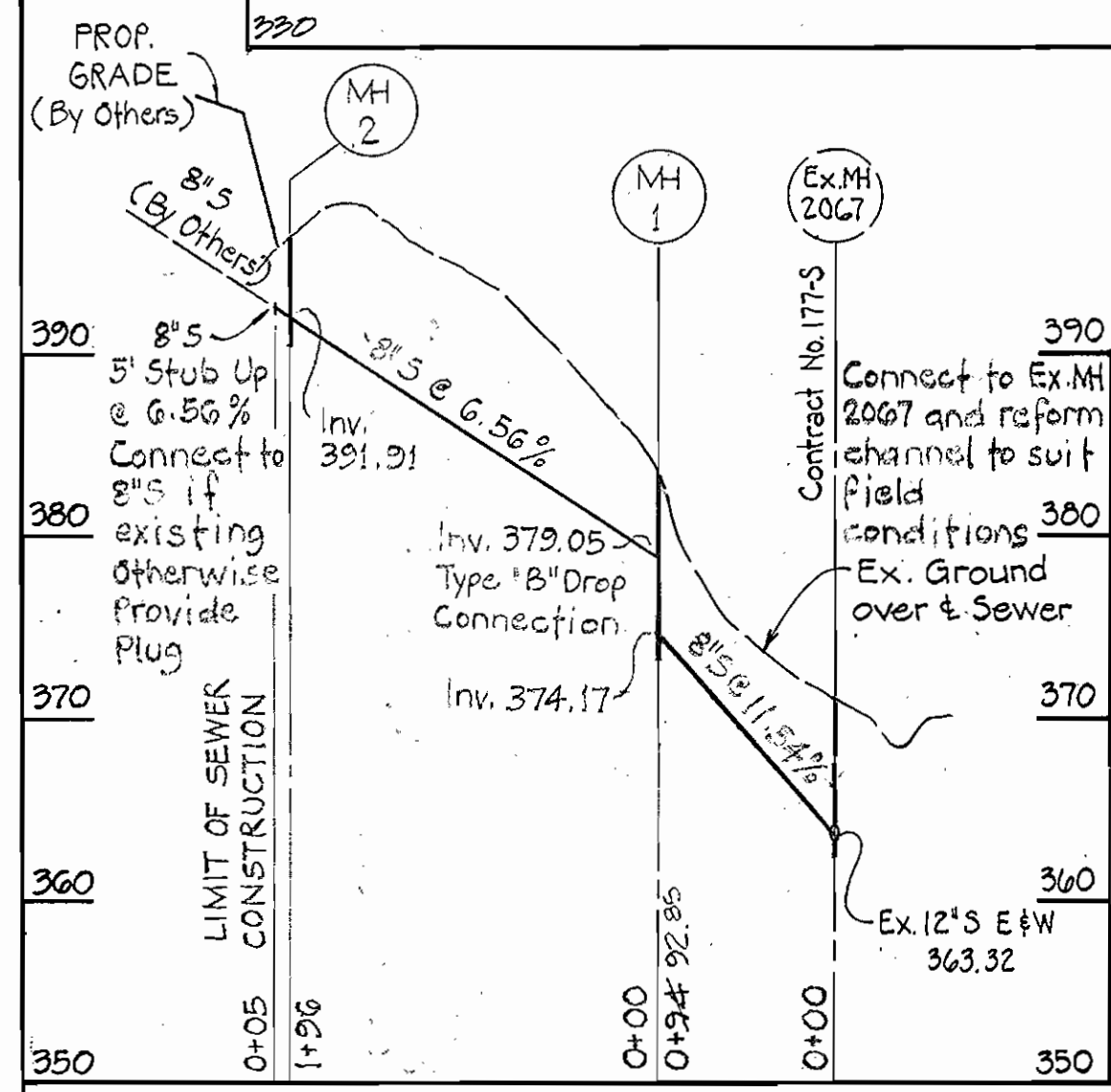
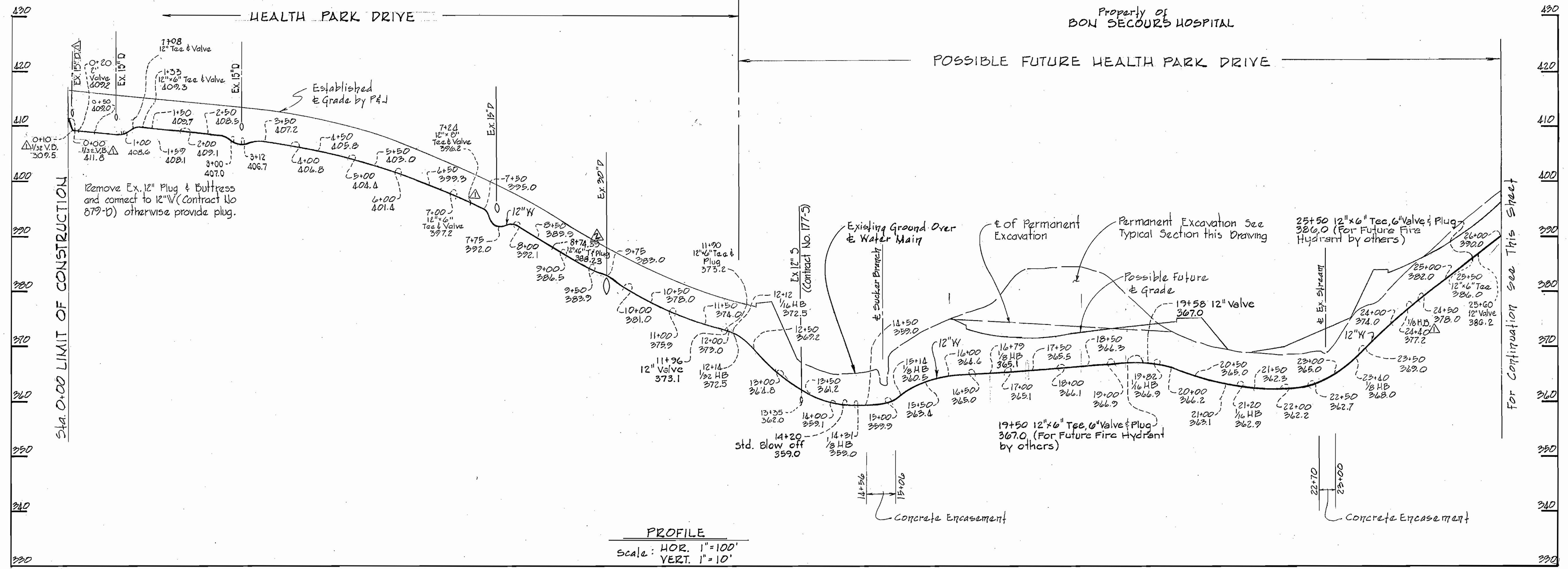
PLAN OF
 WATER & SEWER MAINS

BON SECOURS HEALTH PARK
 WATER MAIN & SEWER EXTENSION
 ELECTION DISTRICT NO. 2
 HOWARD COUNTY, MARYLAND

DRAWING NO. 2 OF 3
 SCALE AS SHOWN
 Designed: REP
 Drafted: T.J.
 Checked: REP

1063/2 WS

1063/3 WS



William G. Jeschke II
Date

DEPARTMENT OF PUBLIC WORKS
HOWARD COUNTY, MARYLAND
DIRECTOR OF PUBLIC WORKS: J. F. Nimmey
DATE: 9-3-82
CHIEF - BUREAU OF UTILITIES: Robert M. Berman
DATE: 9-3-82
CHIEF - LAND DEVELOPMENT: William G. Jeschke II
DATE: 9-3-82

HOWARD SOIL CONSERVATION DISTRICT
THIS DEVELOPMENT PLAN IS APPROVED FOR SOIL EROSION AND SEDIMENT CONTROL BY THE HOWARD SOIL CONSERVATION DISTRICT.
APPROVED: [Signature] DATE: 9-1-82
REVIEWED FOR HOWARD SOIL CONSERVATION DISTRICT AND MEETS TECHNICAL REQUIREMENTS.
[Signature] DATE: 9-3-82

PURDUM & JESCHKE
ENGINEERS
1023 N. CALVERT ST.
BALTIMORE, MARYLAND

CONTRACT NO. 14-1063-D

PROFILE OF
WATER & SEWER MAINS

BON SECOURS HEALTH PARK
WATER MAIN & SEWER EXTENSION
ELECTION DISTRICT NO. 2
HOWARD COUNTY, MARYLAND

CONTRACT NO. 14-1063-D
BON SECOURS HEALTH PARK
WATER MAIN & SEWER EXTENSION

DESIGNED: REP
DRAFTED: TJ
CHECKED: REP