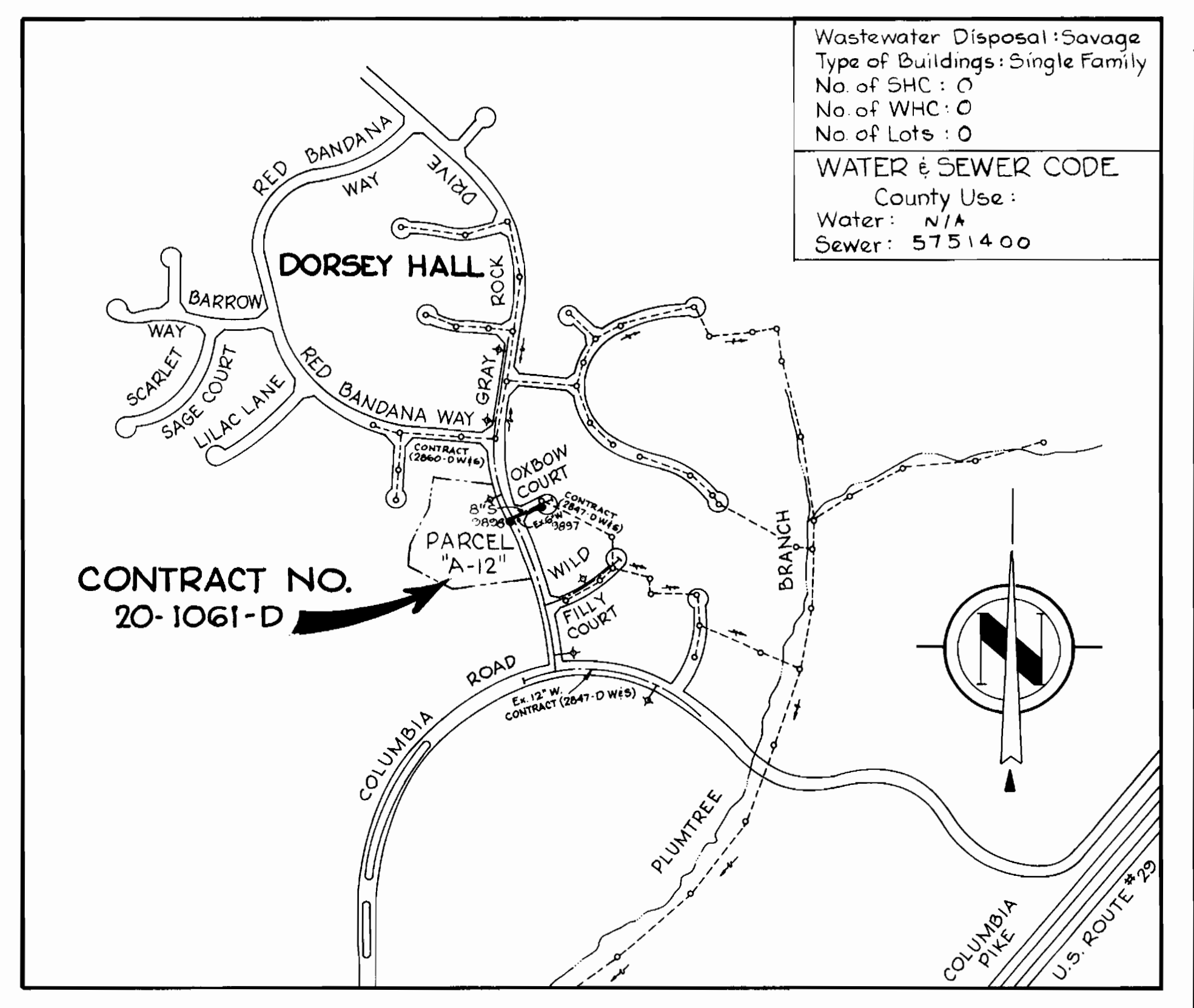


W.R.# A B.M. # "OXBOW" Elev. 373.83  
Concrete Monument S.E. corner intersection of Gray Rock Dr. & Oxbow Ct., located 30' E. of Gray Rock Dr. (lot 24).

W.R.# A B.M. # Conc. Mon. Elev. 382.81  
Concrete Monument 60' ± N. corner intersection Gray Rock Dr. and Wild Filly Ct., approx. 55' N. from ± Wild Filly Ct., 30' E. of Gray Rock Dr.



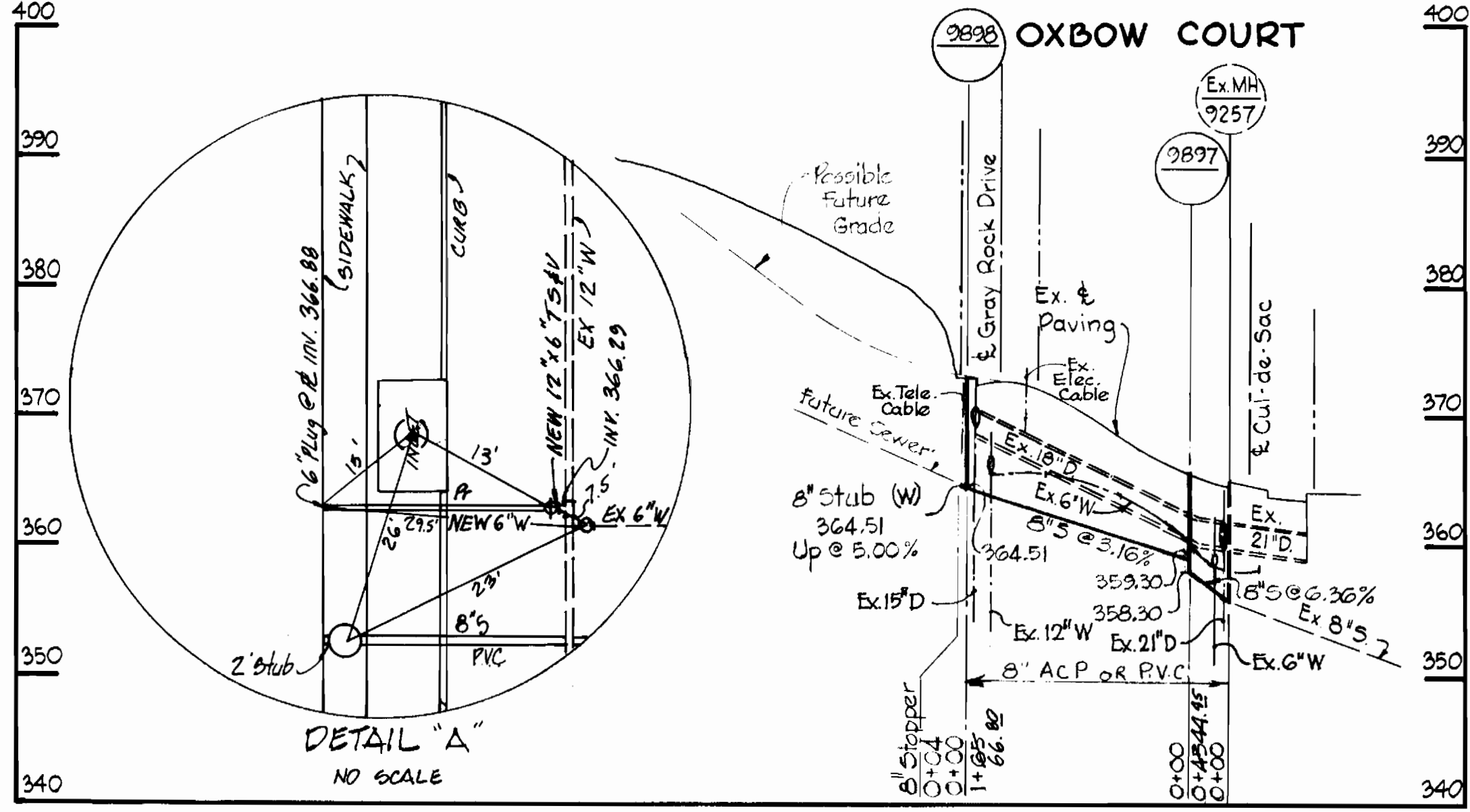
Wastewater Disposal: Savage  
Type of Buildings: Single Family  
No of SHC: 0  
No of WHC: 0  
No of Lots: 0

**WATER & SEWER CODE**  
County Use:  
Water: N/A  
Sewer: 5751400

**GENERAL NOTES**

- APPROXIMATE LOCATION OF EXISTING MAINS SHOWN. THE CONTRACTOR SHALL TAKE ALL NECESSARY PRECAUTIONS TO PROTECT EXISTING MAINS AND SERVICES AND MAINTAIN UNINTERRUPTED SUPPLY. ANY DAMAGE INCURRED SHALL BE REPAIRED IMMEDIATELY TO THE SATISFACTION OF THE ENGINEER, AT THE CONTRACTOR'S EXPENSE.
  - ALL PIPE ELEVATIONS SHOWN ARE INVERT ELEVATIONS.
  - CONTRACTOR SHALL LOCATE EXISTING UTILITIES A MINIMUM OF TWO WEEKS IN ADVANCE OF CONSTRUCTION OPERATIONS IN THE VICINITY OF UTILITIES AT HIS EXPENSE.
  - FOR DETAILS NOT SHOWN ON THE DRAWINGS, USE HOWARD COUNTY STANDARD DETAILS.
  - FOR MATERIALS AND CONSTRUCTION REQUIREMENTS, USE HOWARD COUNTY STANDARD SPECIFICATIONS.
  - ALL HORIZONTAL CONTROLS ARE BASED ON MARYLAND STATE COORDINATES.
  - ALL VERTICAL CONTROLS ARE BASED ON USGS DATUM.
  - CLEAR ALL UTILITIES BY A MINIMUM OF 6". CLEAR ALL POLES BY 2'-0" MINIMUM OR TUNNEL AS REQUIRED. THE COST FOR TUNNELING OR BRACING POLES SHALL BE INCLUDED IN APPROPRIATE UNIT PRICES BID.
  - CONTRACTOR SHALL NOTIFY THE FOLLOWING UTILITIES OR AGENCIES AT LEAST FIVE (5) WORKING DAYS BEFORE STARTING WORK SHOWN ON THESE PLANS.
- BALTIMORE GAS AND ELECTRIC COMPANY  
UNDERGROUND ELECTRIC AND GAS DISTRIBUTION CUSTOMER SERVICE - 685-0123  
DAMAGE CONTROL - 234-5621
- "MISS UTILITY" - 1 - 559-0100  
CHESAPEAKE & POTOMAC TELEPHONE COMPANY - 725-9876  
AMERICAN TELEPHONE AND TELEGRAPH - CABLE LOCATION DIVISION - 393-3553  
BUREAU OF UTILITIES HOWARD COUNTY - 992-2366
  - TREES ARE TO BE PROTECTED FROM DAMAGE TO MAXIMUM EXTENT. TREES LOCATED WITHIN THE CONSTRUCTION STRIP ARE NOT TO BE REMOVED OR DAMAGED BY THE CONTRACTOR.
  - CONTRACTOR SHALL REMOVE TREES, STUMPS AND ROOTS ALONG LINE OF EXCAVATION AS DIRECTED BY THE ENGINEER. PAYMENTS FOR SUCH REMOVAL SHALL BE INCLUDED IN APPROPRIATE UNIT PRICES BID.
  - PLACE REGULATION "MEN WORKING" AND WARNING SIGNS AS REQUIRED TO COMPLY WITH MARYLAND STATE HIGHWAY ADMINISTRATION MANUAL OF TRAFFIC CONTROL FOR HIGHWAY CONSTRUCTION AND MAINTENANCE OPERATIONS.
  - ALL SEWER MAINS SHALL BE A.C.P. OR P.V.C. UNLESS OTHERWISE NOTED.
  - ALL MANHOLES SHALL BE 4'-0" INSIDE DIAMETER, UNLESS OTHERWISE NOTED.
  - THE CONTRACTOR SHALL PROVIDE A JOINT IN ALL SEWER MAINS WITHIN 2'-0" OF EXTERIOR MANHOLE WALLS.

QUANTITIES			
ITEM	BID	AS-BUILT	MATERIAL/SUPPLIER
8" Sewer	214 LF	215.5 LF	ATLANTIC PRECAST CONC. CO. / SUPPLIES INC.
Manholes	2	2	ATLANTIC PRECAST CONC. CO. / SUPPLIES INC.
12"x6" T&E	X	1	ATLANTIC / A.P. W.R.S. / SUPPLIES INC.
6" D.I.P WATER (cl. 82)	-	24 LF.	ATLANTIC / A.P. W.R.S. / SUPPLIES INC.



REVIEWED FOR HOWARD SOIL CONSERVATION DISTRICT AND MEETS TECHNICAL REQUIREMENTS

*James M. Hela* 5-12-82  
SIGNATURE DATE  
U.S. SOIL CONSERVATION SERVICE

This Development Plan is approved for Soil Erosion and Sediment Control by the Howard County Conservation District

APPROVED: *William J. Hama* 5-12-82  
HOWARD S.E.D. DATE

DEPARTMENT OF PUBLIC WORKS  
HOWARD COUNTY, MARYLAND

*Henry F. Nimmer* 5-14-82  
DIRECTOR OF PUBLIC WORKS - DATE

*Richard A. Bevinger* 5-13-82  
CHIEF - BUREAU OF UTILITIES - DATE

Sediment Control Measures for this Contract will be implemented in accordance with Article 15 of the Standard Specifications and Road Construction Plan F-82-101.

WHITMAN, REQUARDT AND ASSOCIATES  
ENGINEERS  
2315 ST. PAUL ST.  
BALTIMORE, MARYLAND

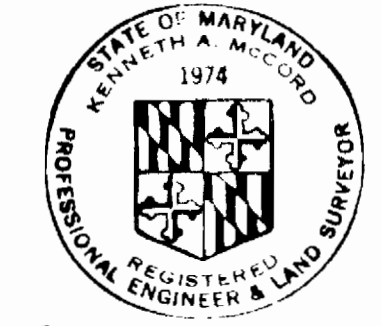
CONTRACT NO. 20-1061-D

PLAN AND PROFILE OF WATER & SEWER MAINS

DORSEY HALL  
ELECTION DISTRICT ELLICOTT CITY NO. 2

Dorsey Hall - Parcel "A-12"  
Section 1 Area 3  
Contract No. 20-1061-D Phase II  
F.O. # 6618

SCALE AS SHOWN  
24-516/846.5  
24-517/846.5



*Kenneth A. Hela*