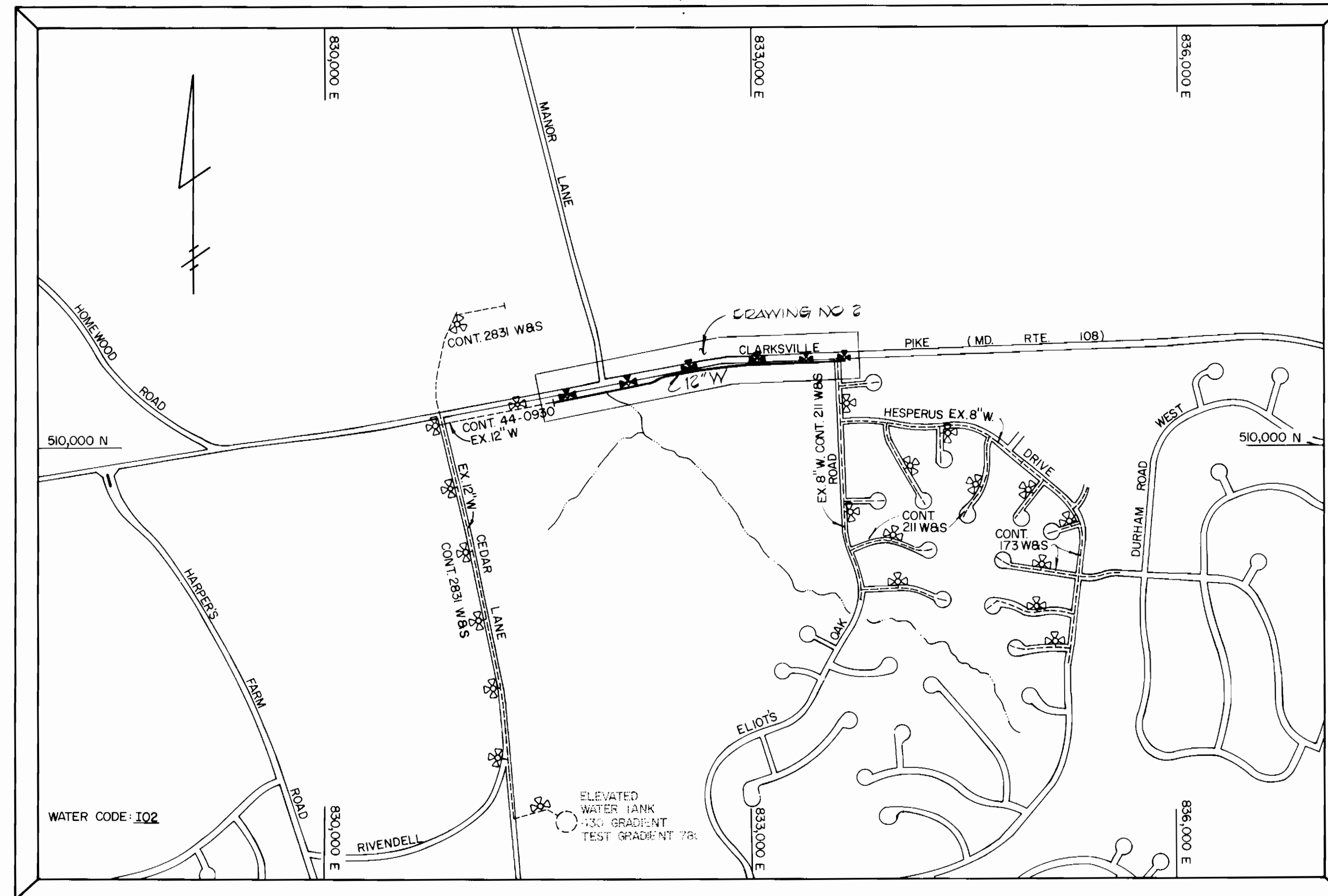


GENERAL NOTES

- APPROXIMATE LOCATION OF EXISTING MAINS ARE SHOWN. THE CONTRACTOR SHALL TAKE ALL NECESSARY PRECAUTIONS TO PROTECT EXISTING MAINS AND SERVICES AND MAINTAIN UNINTERRUPTED SUPPLY. ANY DAMAGE INCURRED SHALL BE REPAIRED IMMEDIATELY TO THE SATISFACTION OF THE ENGINEER, AT THE CONTRACTORS EXPENSE.
- ALL HORIZONTAL CONTROLS ARE BASED ON MARYLAND STATE COORDINATES.
- ALL VERTICAL CONTROLS ARE BASED ON U.S.G.S. DATUM.
- ALL PIPE ELEVATIONS SHOWN ARE INVERT ELEVATIONS.
- CLEAR ALL UTILITIES BY A MINIMUM OF 6". CLEAR ALL POLES BY 2'-0" MINIMUM OR TUNNEL AS REQUIRED, ANY COST INCURRED TO THE CONTRACTOR FOR TUNNELING OR BRACING AT POLES SHALL BE INCLUDED IN UNIT PRICES BID FOR CONSTRUCTION OF THE MAIN.
- FOR DETAILS NOT SHOWN ON THE DRAWINGS USE HOWARD COUNTY STANDARD DETAILS.
- FOR MATERIALS AND CONSTRUCTION METHODS USE HOWARD COUNTY STANDARD SPECIFICATION.
- CONTRACTOR SHALL LOCATE EXISTING UTILITIES A MINIMUM OF TWO (2) WEEKS IN ADVANCE OF CONSTRUCTION OPERATIONS IN THE VICINITY OF PROPOSED UTILITIES AT HIS OWN EXPENSE.
- CONTRACTOR SHALL NOTIFY THE FOLLOWING UTILITIES OR AGENCIES AT LEAST FIVE (5) WORKING DAYS BEFORE STARTING WORK SHOWN ON THESE PLANS:
 - STATE HIGHWAY ADMINISTRATION - (531-5333)
 - BALTIMORE GAS AND ELECTRIC CO. - UNDERGROUND ELECTRIC DISTRIBUTION, CUSTOMER SERVICE - (685-023)
 - BALTIMORE GAS AND ELECTRIC CO. - UNDERGROUND GAS DISTRIBUTION, CUSTOMER SERVICE - (685-023)
 - ENGINEERING "DAMAGE CONTROL" - (234-5621)
 - "MISS UTILITY" - (1-559-0100)
 - CHESAPEAKE & POTOMAC (C&P) TELEPHONE COMPANY - (725-9976)
 - BUREAU OF UTILITIES, HOWARD COUNTY - (992-2366)
- TREE ARE TO BE PROTECTED FROM DAMAGE TO MAXIMUM EXTENT. TREES LOCATED WITHIN THE CONSTRUCTION STRIP ARE NOT TO BE REMOVED OR DAMAGED BY THE CONTRACTOR.
- CONTRACTOR SHALL REMOVE TREES, STUMPS AND ROOTS ALONG LINE OF EXCAVATION AS DIRECTED BY THE ENGINEER. PAYMENT FOR SUCH REMOVAL SHALL BE INCLUDED IN THE UNIT PRICES BID FOR CONSTRUCTION OF THE MAIN.
- PLACE REGULATION "MEN WORKING" AND WARNING SIGNS AS REQUIRED TO COMPLY WITH MARYLAND STATE HIGHWAY ADMINISTRATION MANUAL OF TRAFFIC CONTROL FOR HIGHWAY CONSTRUCTION AND MAINTENANCE OPERATIONS.
- ALL WATER MAINS TO BE C.I.P. OR D.I.P. UNLESS OTHERWISE NOTED.
- VALVES ADJACENT TO TEES SHALL BE STRAPPED TO TEES.
- BLOCK ALL FITTINGS WITH CONCRETE.
- BURY LINE ELEVATIONS ON FIRE HYDRANTS SHALL BE SET TO THE ELEVATIONS SHOWN ON THE DRAWINGS. ALL FIRE HYDRANTS SHALL BE STRAPPED AND BUTTRESSED WITH CONCRETE IN ACCORDANCE WITH STANDARD DETAILS. SOIL AROUND THE FIRE HYDRANT IS TO BE COMPACTED IN ACCORDANCE WITH SECTION 37.01 AND 37.05 OF THE STANDARD SPECIFICATIONS.
- ALL WATER HOUSE CONNECTIONS SHALL BE FOR AN INSIDE METER SETTING. WATER MAIN AND WATER HOUSE CONNECTION LINES MUST BE PLACED SO AS TO HAVE AT LEAST ONE (1) FOOT SEPARATION FROM THE SEWER MAIN OR SEWER HOUSE CONNECTION AS THEY PASS ABOUT IT.
- TOP OF ALL WATER MAINS TO HAVE A MINIMUM OF 3'-6" COVER UNLESS OTHERWISE NOTED.
- THE CONTRACTOR SHALL NOT OPERATE ANY WATER MAIN VALVES ON THE EXISTING SYSTEM.



QUANTITIES			
ITEM	EST'D	AS BUILT	SUPPLIER
12" WATER	2075 LF	2087 LF	ATLANTIC PIPE
6" WATER	125 LF	148 LF	ATLANTIC PIPE
12" VALVES	4 EA	4 EA	A+P SUPPLIES
6" F.H VALVES	0 EA	6 EA	A+P SUPPLIES
3/4" WHC	120 LF	294 LF	FLOW IND
1" WHC	220 LF	218 LF	FLOW IND
FIRE HYDRANTS	0 EA	6 EA	A+P SUPPLIES
8" VALVES	1 EA	1 EA	A+P SUPPLIES
AIR RELEASE VALVE	1 EA	1 EA	FLOW IND

CONTRACT NO. 44-1046
CAPITAL PROJECT W-8127
MARYLAND ROUTE 108 - PART III
HOWARD COUNTY, MARYLAND
DEPARTMENT OF PUBLIC WORKS



TERRELL A. FISHER 2/9/82
DATE

THIS PLAN IS APPROVED FOR EROSION AND SEDIMENT CONTROL BY THE HOWARD SOIL CONSERVATION DISTRICT.

REVIEWED FOR HOWARD COUNTY SOIL CONSERVATION DISTRICT AND MEETS TECHNICAL REQUIREMENTS.

William J. Rowe 5-11-82
APPROVED HOWARD SOIL CONSERVATION DISTRICT DATE

James A. Adams 5-12-82
US SOIL CONSERVATION SERVICE DATE

CONTRACT NO. 44-1046
CAPITAL PROJECT W-8127
MARYLAND ROUTE 108 - PART III
WATER EXTENSION
HOWARD COUNTY, MARYLAND

DEPARTMENT OF PUBLIC WORKS
HOWARD COUNTY, MARYLAND

John F. ... 6-10-82
DIRECTOR OF PUBLIC WORKS DATE

Allen S. Brown 6-14-82
CHIEF, BUREAU OF UTILITIES DATE

Allen S. Brown 6-14-82
CHIEF, UTILITY DIVISION DATE

FISHER, COLLINS AND CARTER, INC.
CIVIL ENGINEERS AND LAND SURVEYORS
8388 COURT AVENUE
ELLCOTT CITY, MARYLAND 21043

CONTRACT NO. 44-1046
CAPITAL PROJECT W-8127

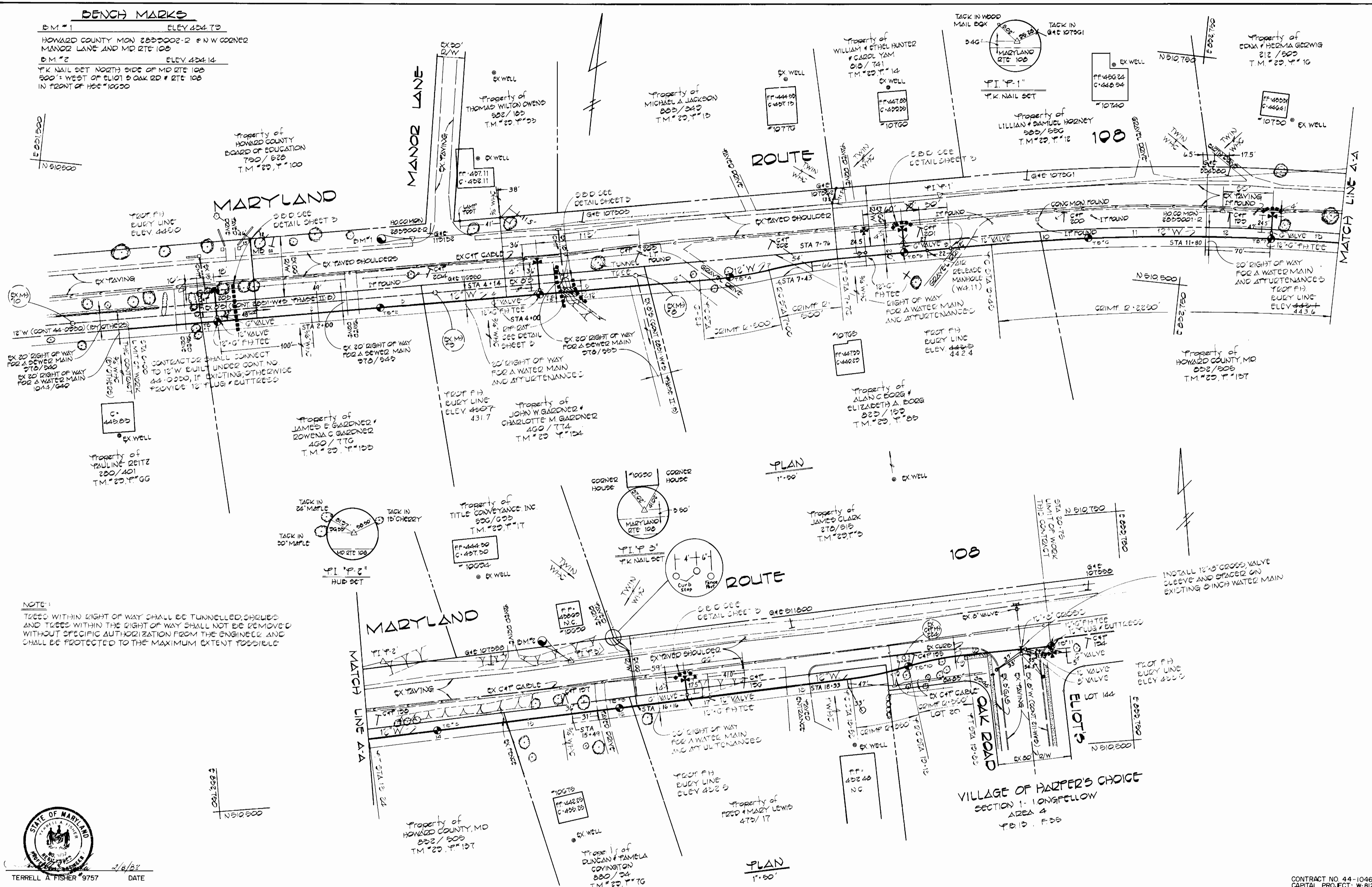
VICINITY MAP

MARYLAND ROUTE 108 - PART III
WATER MAIN EXTENSION
HOWARD COUNTY, MARYLAND
ELECTION DISTRICT 5

DRAWING NO. 1 OF 3	SCALE 1" = 600'	DES: D.B.S. DRN: D.B.B. CHK: T.A.F.
--------------------	-----------------	---

BENCH MARKS

B.M. #1 ELEV 424.70
 HOWARD COUNTY MON 2850002-R S.W. CORNER
 MANOR LANE AND MD RTE 108
 B.M. #2 ELEV 424.14
 T.K. NAIL SET NORTH SIDE OF MD RTE 108
 500' WEST OF ELIOT & OAK RD # RTE 108
 IN FRONT OF HSE #10000



NOTE:
 TREES WITHIN RIGHT OF WAY SHALL BE TUNNELLED, SHRUBS
 AND TREES WITHIN THE RIGHT OF WAY SHALL NOT BE REMOVED
 WITHOUT SPECIFIC AUTHORIZATION FROM THE ENGINEER, AND
 SHALL BE PROTECTED TO THE MAXIMUM EXTENT POSSIBLE



TERRELL A FISHER #9757 DATE 2/8/82

DEPARTMENT OF PUBLIC WORKS
 HOWARD COUNTY, MARYLAND
 Director of Public Works: *William F. Nunn* 6/2/82
 Chief, Bureau of Engineering: *William E. Ray* 4/1/82
 Chief, Bureau of Utilities: *Robert M. Berman* 6/9/82
 Chief, Utility Division: *Allen S. Brown* 6/4/82

FISHER, COLLINS AND CARTER, INC.
 CIVIL ENGINEERS AND LAND SURVEYORS
 8388 COURT AVENUE
 ELLICOTT CITY, MARYLAND 21043

CONTRACT NO. 44-1046
 CAPITAL PROJECT W-8127

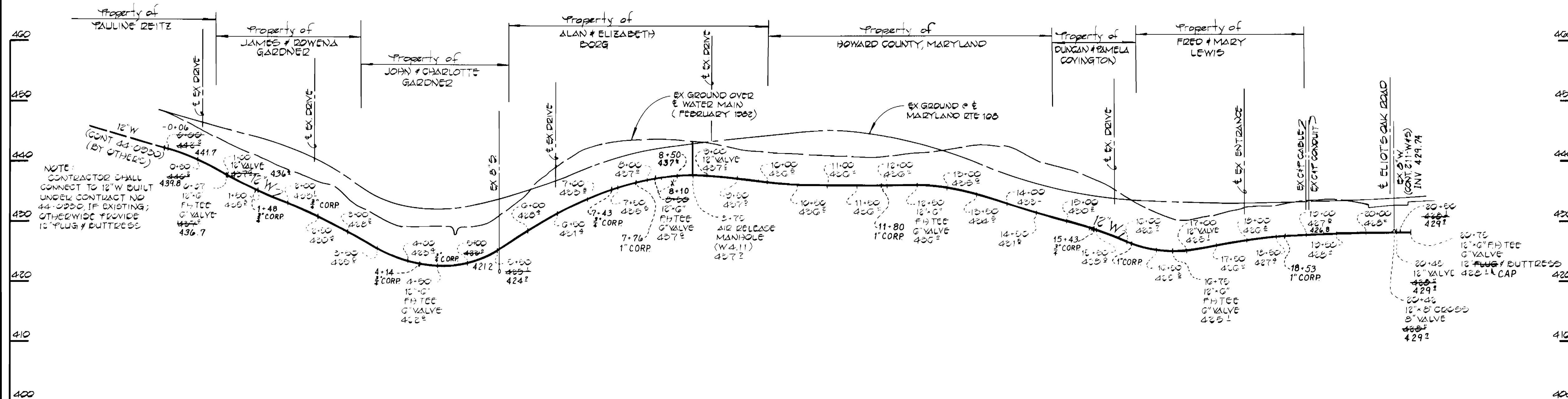
PLAN
 WATER MAIN

MARYLAND ROUTE 108 - PART III
 WATER MAIN EXTENSION
 HOWARD COUNTY, MARYLAND
 ELECTION DISTRICT 5

DRAWING NO. 2 OF 3	SCALE AS SHOWN	DES. D.B.S. DRN. D.B.S. CHK. T.A.F.
--------------------	----------------	---

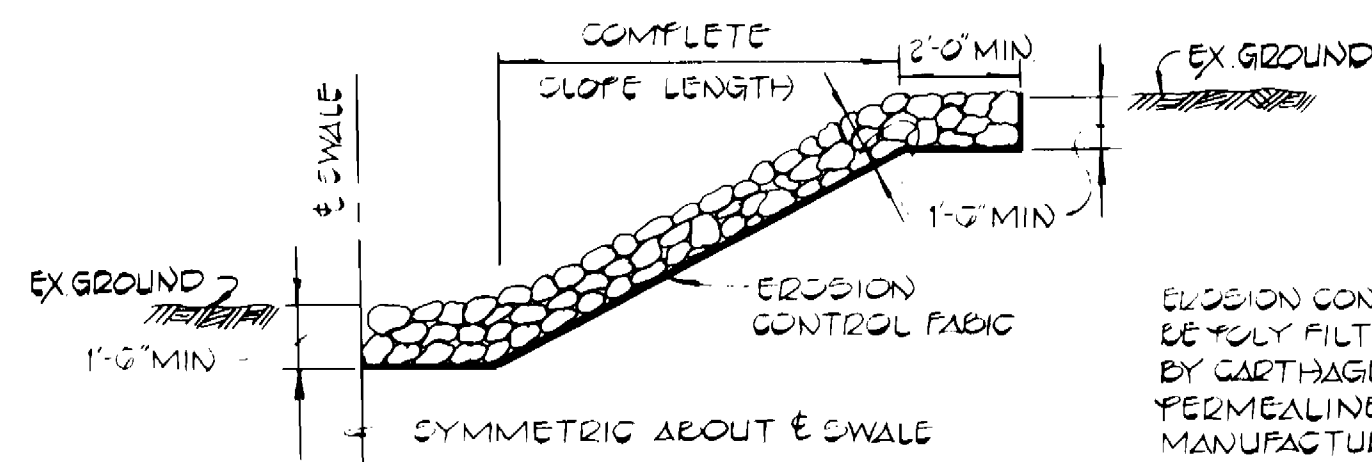
CONTRACT NO. 44-1046
 CAPITAL PROJECT W-8127
 MARYLAND ROUTE 108 - PART III
 WATER MAIN EXTENSION
 HOWARD COUNTY, MARYLAND

MARYLAND ROUTE 108



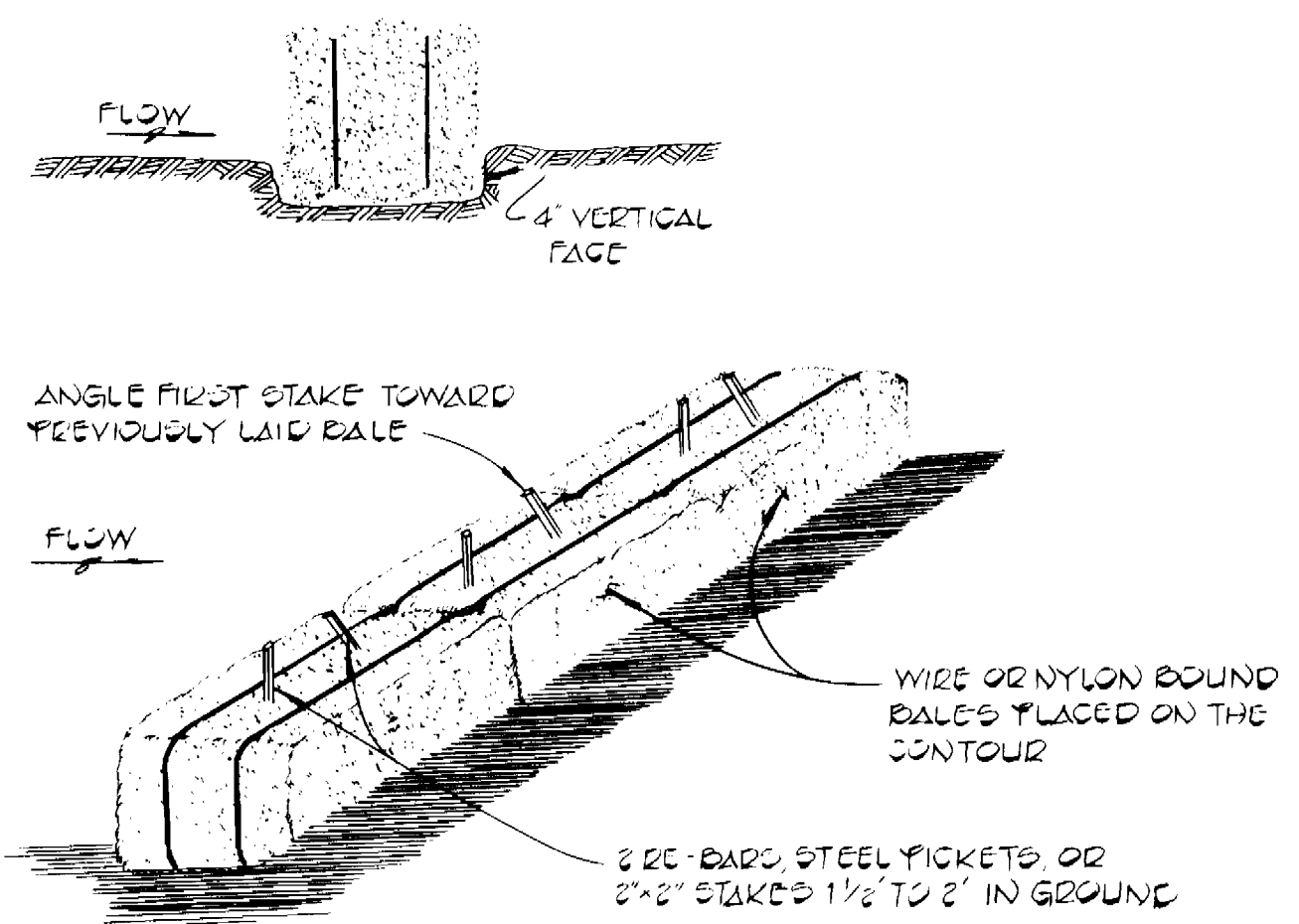
PROFILE
SCALE HOR 1"=100'
VERT 1"=10'

2 1/2' DAP TO CONSIST OF BLENDED ROCKS OF RANDOM SHAPE AND SIZE, RESISTANT TO THE ACTION OF AIR AND WATER AND SUITABLE FOR BANK PROTECTION. ALL ROCKS TO WEIGH A MINIMUM OF 75 POUNDS.

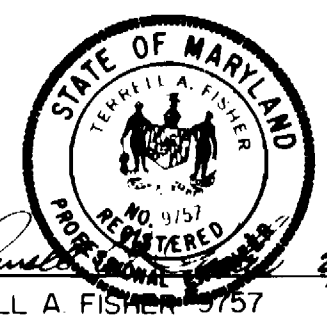


UNGROUTED RIPRAP DETAIL
NO SCALE

EROSION CONTROL FABRIC SHALL BE POLY FILTER-X AS MANUFACTURED BY GARTHAGE MILLS, INC. OR PERMEALINER M-1126 AS MANUFACTURED BY STAFF INDUSTRIES, INC. OR EQUAL.



STRAW BALE DIKE
NO SCALE



TERRELL A. FISHER 9/8/82 DATE

DEPARTMENT OF PUBLIC WORKS
HOWARD COUNTY MARYLAND
M. F. Nunnally 6/16/82
DIRECTOR OF PUBLIC WORKS DATE
Allen S. Brown 6/14/82
CHIEF, BUREAU OF UTILITIES DATE
CHIEF, UTILITY DIVISION

FISHER, COLLINS AND CARTER, INC.
CIVIL ENGINEERS AND LAND SURVEYORS
8388 COURT AVENUE
ELLCOTT CITY, MARYLAND 21043

CONTRACT NO. 44-1046
CAPITAL PROJECT W-8127

PROFILE & DETAILS
WATER MAIN

MARYLAND ROUTE 108 - PART III
WATER MAIN EXTENSION
HOWARD COUNTY, MARYLAND
ELECTION DISTRICT 5

DRAWING NO. 3 OF 3	SCALE AS SHOWN	DES. D.B.S.
		DRN. D.B.S.
		CHK. T.A.F.

CONTRACT NO. 44-1046
CAPITAL PROJECT W-8127
MARYLAND ROUTE 108 - PART III
WATER EXTENSION
HOWARD COUNTY, MARYLAND