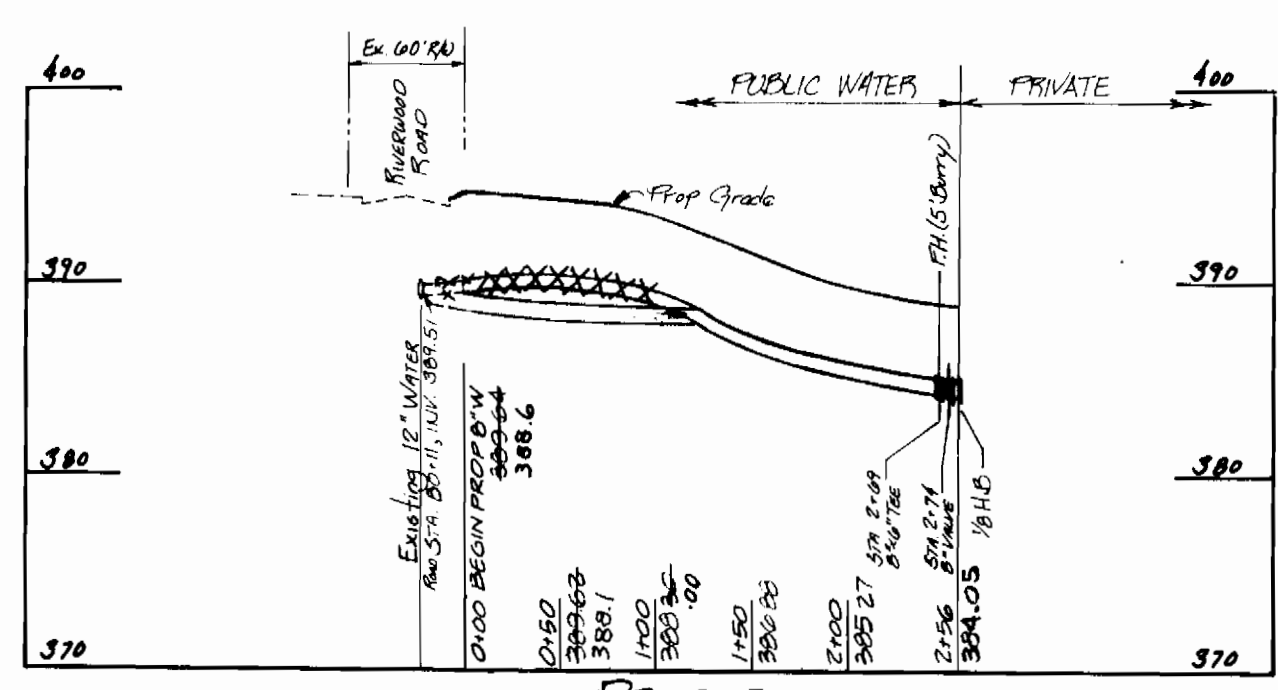


TYPE OF BUILDING	OFFICE & LAB	BENCH MARK # 2	ELEVATION = 378.59
NUMBER OF LOTS	1	DESCRIPTION: R.R. Spike In C & P Pole No 10 1/2,	
NUMBER OF W.H.C.	1	West Side Of Pte. 32, Sta. 88+55.5, @ 120'± Right	
NUMBER OF S.H.C.	N/A	Of Old Columbia Rd. (Obtained From Century Engineer-	
DRAINAGE AREA	LITTLE PATUXENT	ing).	
		BENCH MARK # 234002	ELEVATION 362.61
		DESCRIPTION: R.B. 1.5'± West Of West Ed	
		Road, 7' Below Surface (Guilford Road)	
		N 408,839.13 / E 836,802.85	

- ### GENERAL NOTES
- Approximate location of existing mains are shown. The Contractor Shall Take all necessary precautions To Protect Existing Mains And Services And Uninterrupted Supply. Any Damage Incurred Shall Be Repaired Immediately.
  - All Horizontal Controls Are Based On Maryland State Coordinates.
  - All Vertical Controls Are Based On U.S.G.S Datum.
  - Clear All Utilities By A Minimum Of 6'. Clear All Poles 2'-0" Minimum Or Tunnel As Required.
  - Contractor Shall Locate Existing Utilities In Advance Of Construction Operations In Vicinity Of Proposed Utilities.
  - Contractor Shall Notify The Following Utilities Or Agencies At Least (5) Five Days Before Starting Any Work:
 

"Miss Utility" (Collect)	1-555-0100
Daltimore Gas & Electric Co. - Underground Electric Distribution Engineering "Damage Control", Mr. G.U. Zeller, Manager	234-5691
Daltimore Gas & Electric Co. Underground Gas Distribution Engineering, Mr. Ball	234-5533
Cheapeake & Potomac Telephone Co.	725-2976
Bureau Of Utilities (Howard County)	992-2366
  - Contractor Shall Remove Trees, Stumps, And Roots Along Line Of Excavation As Directed By Engineer. Payment For Sash Removal Shall Be Included In The Unit Price Bid For "Excavation And Backfill For Water And Sewer Mains".
  - Place Regulation "Men Working" And Warning Signs As Required To Comply With Maryland State Highway Administration "Manual For Highway Construction And Maintenance Operations".
  - All Water Mains To Be C.I.P. Or D.I.P. Unless Otherwise Noted.
  - Top Of Water Mains To Have A Minimum Of 3.5' Cover Unless Otherwise Noted.
  - All Valves Shall Be Strapped To Tees In Accordance With Standard Details.
  - Check All Fittings With Concrete. See Standards Found In Specifications.
  - Bury Line Elevations On Fire Hydrants Shall Be Set To The Elevations Shown On The Drawings. All Fire Hydrants Shall Be Strapped And Buttressed With Concrete In Accordance With Standard Details. Soil Around The Fire Hydrant To Be Compacted In Accordance With Section 5-15 Of The Standard Specifications.
  - All Water Main Elevations Shown Are Invert (I) Elevations.
  - Sediment Control Measures For This Contract Will Be Implemented In Accordance With Grading And Sediment And Erosion Control Plan.
  - Water Main And Water House Connections Must Be Placed So As To Have At Least One (1) Foot Separation From The Sanitary Sewer And Sewer House Connection As They Pass Above It.
  - Minimum Crimp Radius As Specified By Pipe Manufacturer.
  - The Contractor Shall Not Operate Any Water Main Valves On The Existing System.



NOTE: Proposed Improvements, Other Than 8" Water, As Shown Hereon Are As Indicated On S.D.P.#

*Japobrotas*  
 1-12-82  
 1964 # 8930

SEDIMENT CONTROL MEASURES FOR CONTRACT WILL BE IMPLEMENTED IN ACCORDANCE WITH ARTICLE #15 OF THE STANDARD SPECIFICATIONS AND S.D.P.# 82-79C

QUANTITIES			
ITEM	ESTIMATED	AS-BUILT	MATERIAL-SUPPLIER
8" x 6" TEE	1 EA.	1 EA.	TRINITY VALLEY - A+P
8" WATER	256 L.F.	256 L.F.	ATLANTIC STATES - A+P
6" WATER	5 L.F.	5 L.F.	ATLANTIC STATES - A+P
6" F.H. VALVE	1 EA.	1 EA.	MUELLER - A+P
8" VALVE	1 EA.	1 EA.	MUELLER - A+P
1/8 SAND (8')	1 EA.	1 EA.	TRINITY VALLEY - A+P
FIRE HYDRANT	1 EA.	1 EA.	M.H. DRESSER - FLDW

DEPARTMENT OF PUBLIC WORKS  
 HOWARD COUNTY, MARYLAND  
 Robert W. Bauninger 3-8-82  
 CHIEF - BUREAU OF UTILITIES - DATE

DEPARTMENT OF PUBLIC WORKS  
 HOWARD COUNTY, MARYLAND  
 George W. Stephens, Jr. & Assoc., Inc.  
 CONSULTING ENGINEERS  
 303 ALLEGHENY AVENUE  
 TOWSON, MARYLAND 21284

DEPARTMENT OF PUBLIC WORKS  
 HOWARD COUNTY, MARYLAND  
 3-10-82  
 CHIEF - LAND DEVELOPMENT - DATE

REVIEWED FOR THE HOWARD SOIL CONSERVATION DISTRICT MEETS TECHNICAL REQUIREMENTS

*James M. Hehl* 3-4-82  
 U.S. SOIL CONSERVATION SERVICE DATE

THIS CONSTRUCTION PLAN IS APPROVED FOR SOIL EROSION AND SEDIMENT CONTROL BY THE HOWARD SOIL CONSERVATION DISTRICT.

*William T. Rome* 3-4-82  
 APPROVED HOWARD SOIL CONSERVATION DISTRICT DATE

CONTRACT NO  
 44-1044-D

PLAN AND PROFILE  
 OF  
 WATER MAIN

RIVERS CORPORATE PARK  
 SECTION 1, AREA 1, PARCEL 'C'  
 6TH ELECTION DISTRICT  
 HOWARD COUNTY, MARYLAND

DRAWING  
 NO 1  
 OF 1

SCALE  
 AS SHOWN

DESIGN - T.C.  
 DRAWING - P.L.C.  
 CHECK - T.C.  
 PROJ. - 04575