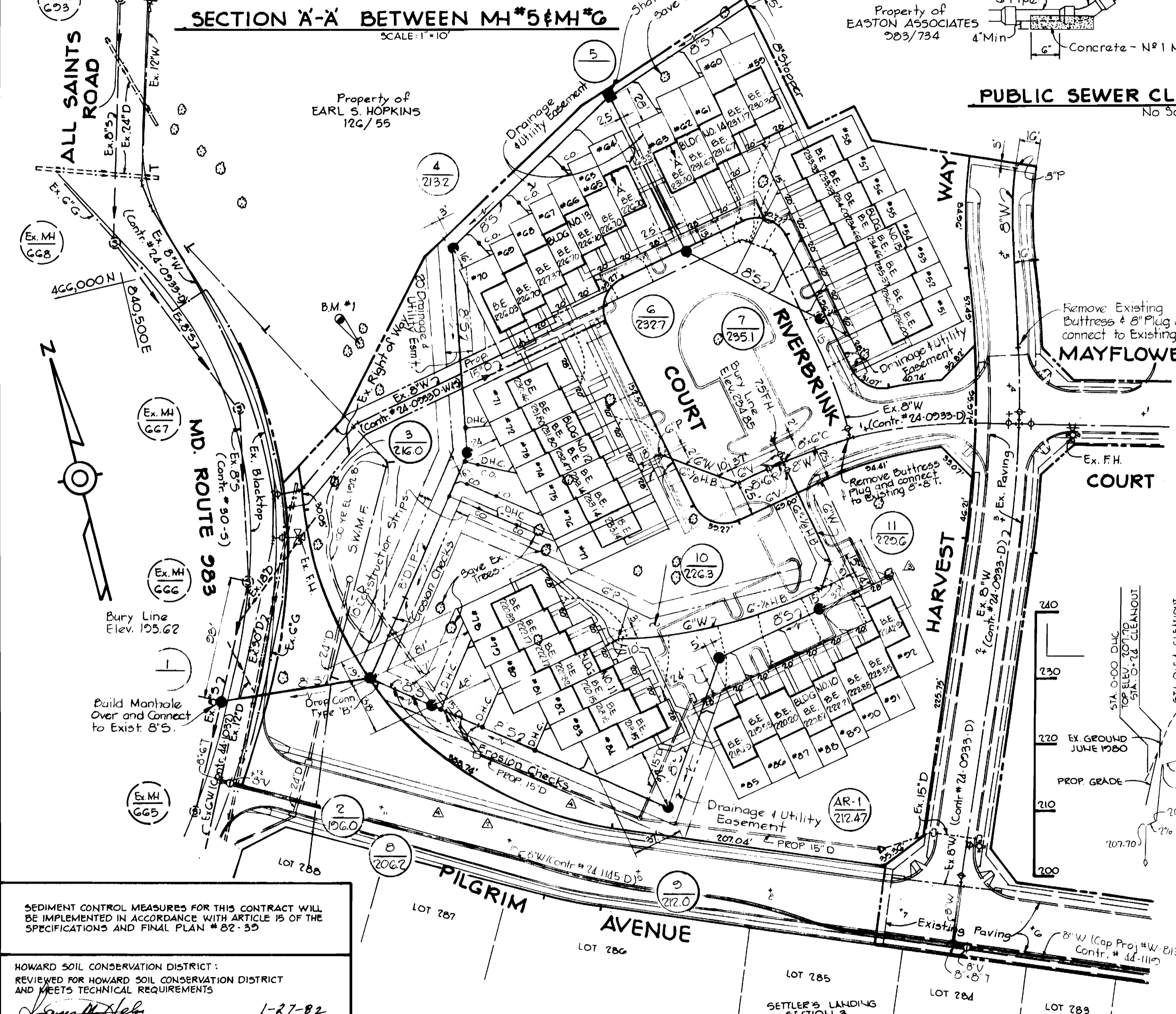
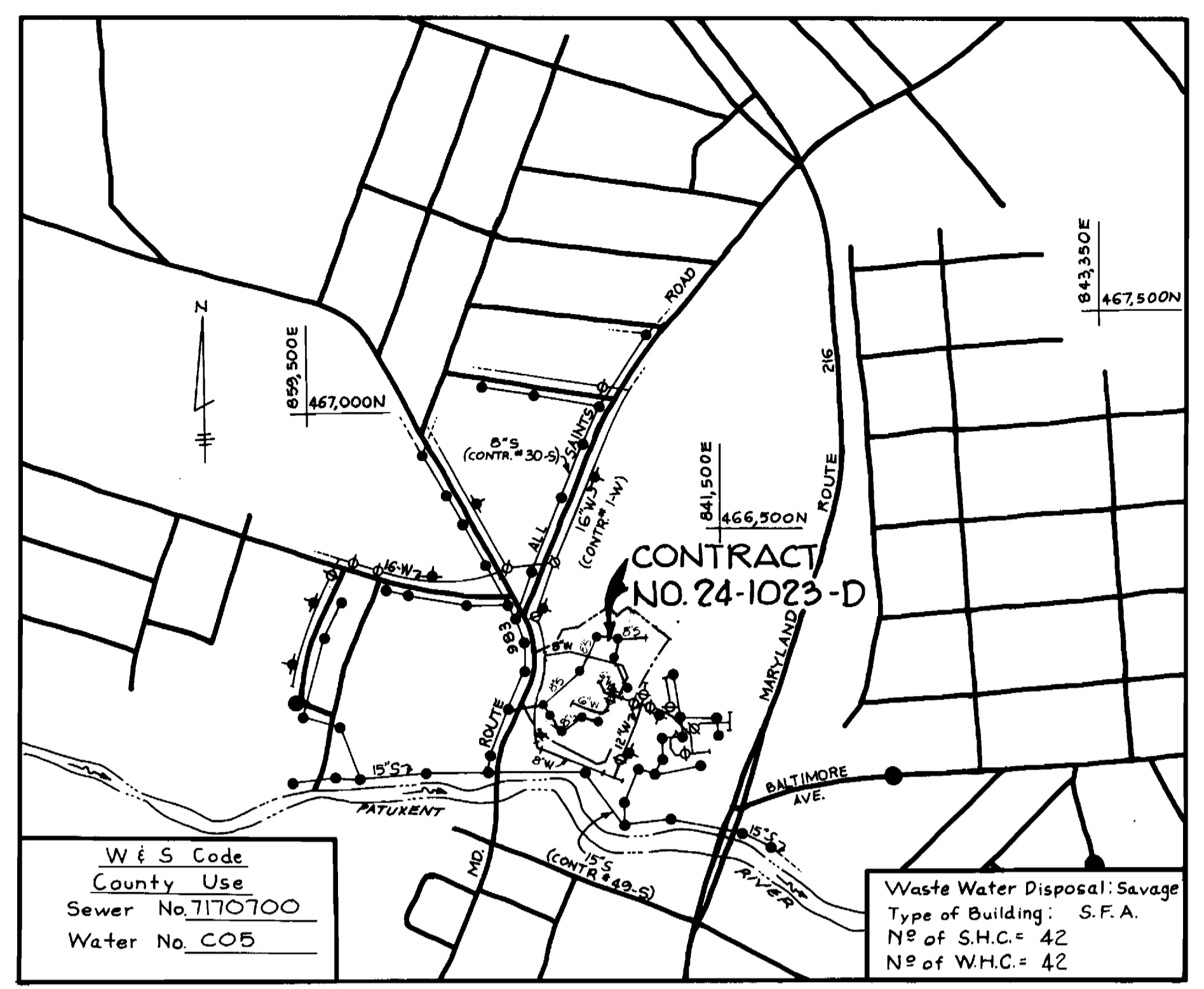
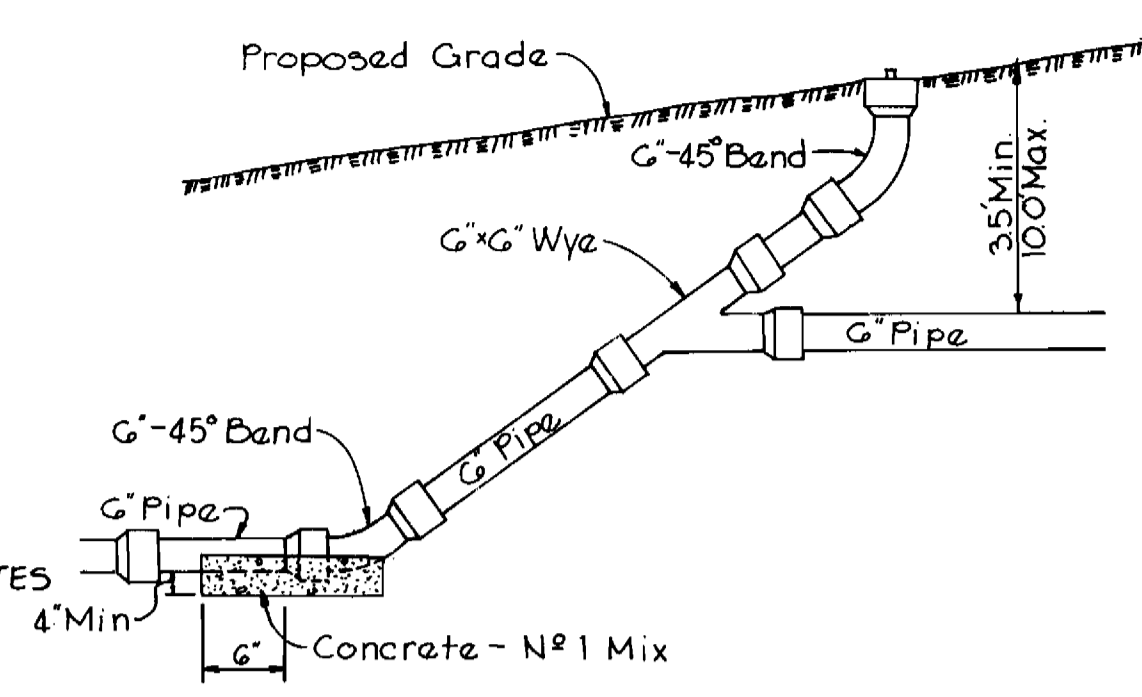


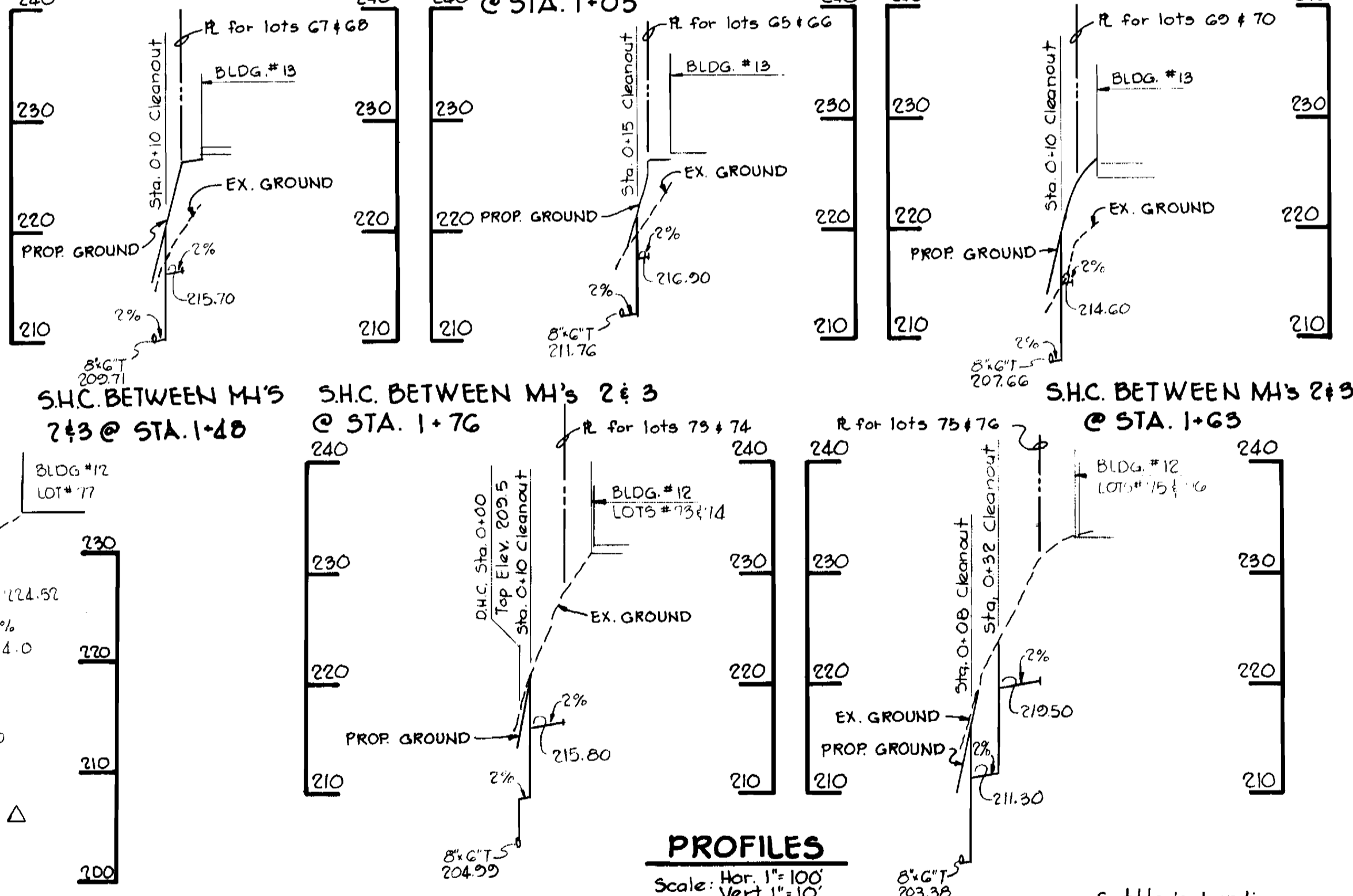
**BENCH MARKS**

B.M. #1 Elev. 200.03  
Nail in 36" Oak 15'± left of Traverse between P.I. #105 and P.I. #106

B.M. #2 Elev. 221.98  
Nail in 48" Oak 340'± left of Sta. G+52± Route 216



**PROFILES**  
Scale: Hor. 1"=100' Vert. 1"=10'



QUANTITIES		ESTIMATED AS BUILT MATERIAL/SUPPLIER	
ITEM	QUANTITY		
8" Sewer	1432 L.F.		
Manholes	20 V.F.		
Fire Hydrants	1		
8" Water	101 L.F.		
6" Water	310 L.F.		
6" V's (excl. F.H.V's)	2		

SEDIMENT CONTROL MEASURES FOR THIS CONTRACT WILL BE IMPLEMENTED IN ACCORDANCE WITH ARTICLE 15 OF THE SPECIFICATIONS AND FINAL PLAN #82-35

HOWARD SOIL CONSERVATION DISTRICT:  
REVIEWED FOR HOWARD SOIL CONSERVATION DISTRICT AND MEETS TECHNICAL REQUIREMENTS

*William V. R...*  
DATE: 1-27-82

UPD. SOIL CONSERVATION SERVICE  
THIS PLAN IS APPROVED FOR SOIL EROSION AND SEDIMENT CONTROL BY THE HOWARD SOIL CONSERVATION DISTRICT.

*William V. R...*  
DATE: 1-27-82

HOWARD SOIL CONSERVATION DISTRICT

RIEMER-TRACY & ASSOCIATES, INC.  
8659 BALTIMORE NATIONAL PIKE  
ELLCOTT CITY, MARYLAND 21043

DEPARTMENT OF PUBLIC WORKS  
HOWARD COUNTY, MARYLAND  
CHIEF, LAND DEVELOPMENT DIVISION  
CHIEF, BUREAU OF ENGINEERING  
CHIEF, BUREAU OF UTILITIES

DATE: 1-29-82  
DATE: 1/29/82  
DATE: 1/29/82

CONTRACT NO. 24-1023-D

PLAN AND PROFILES OF WATER AND SEWER MAINS

SETTLERS LANDING SECTION - 1 AREA - 2  
6TH ELECTION DISTRICT

DRAWING NO. OF 2 SCALE AS SHOWN

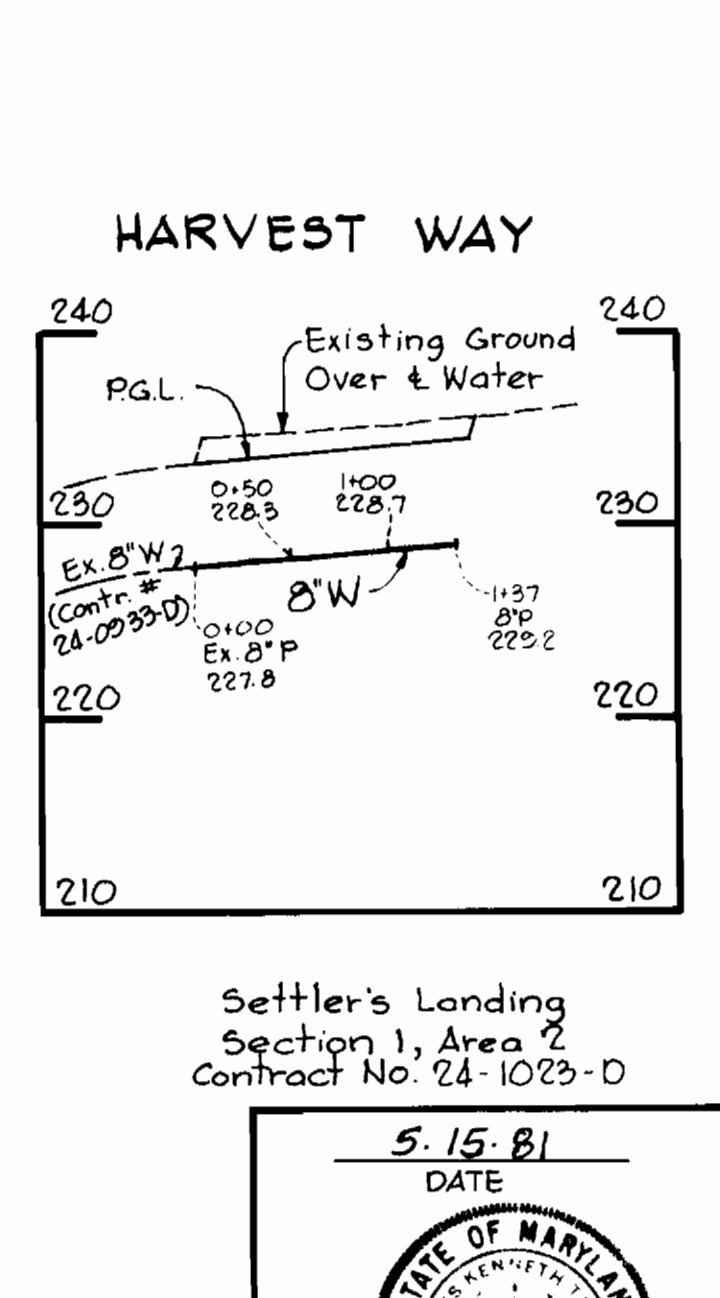
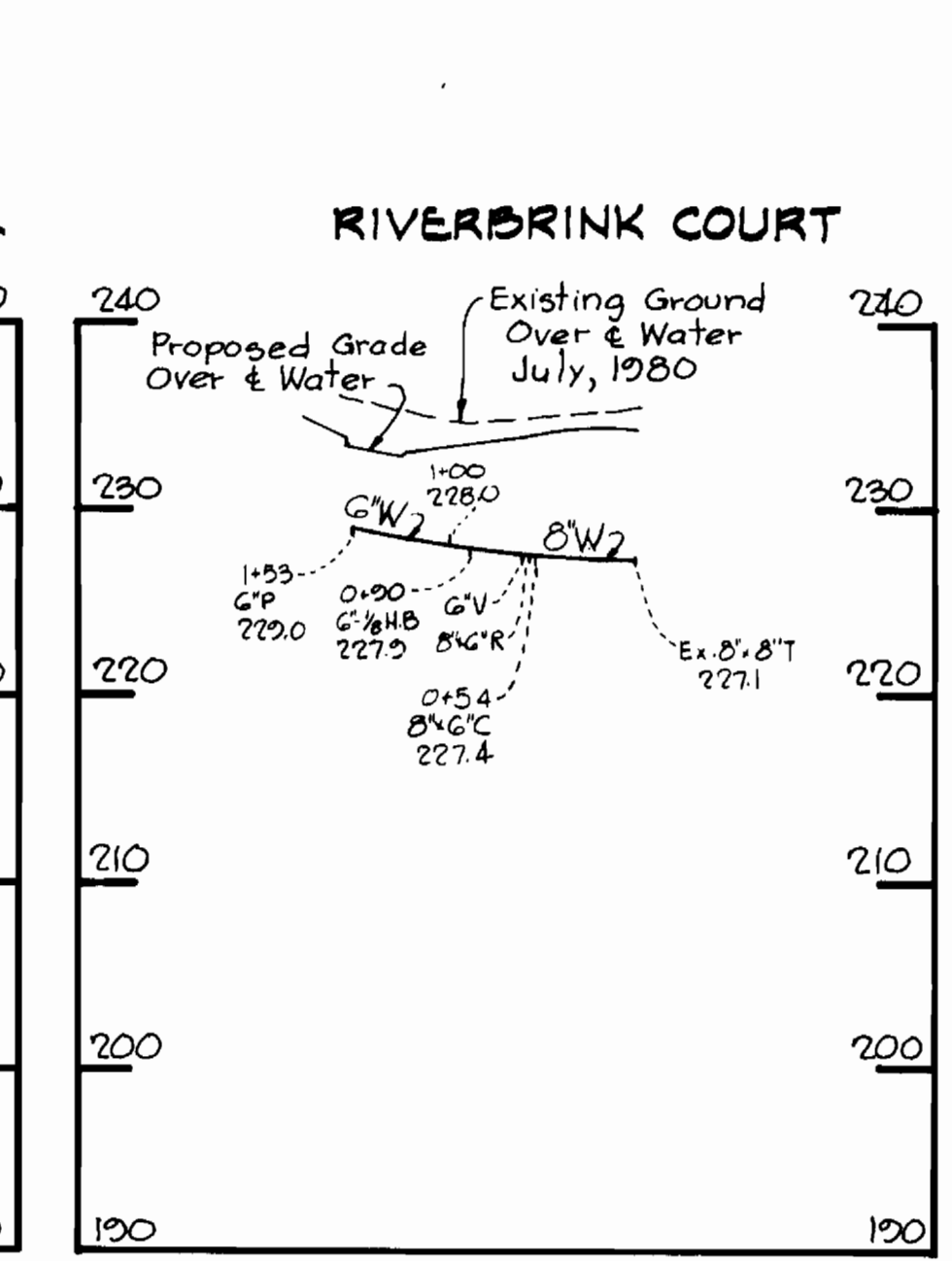
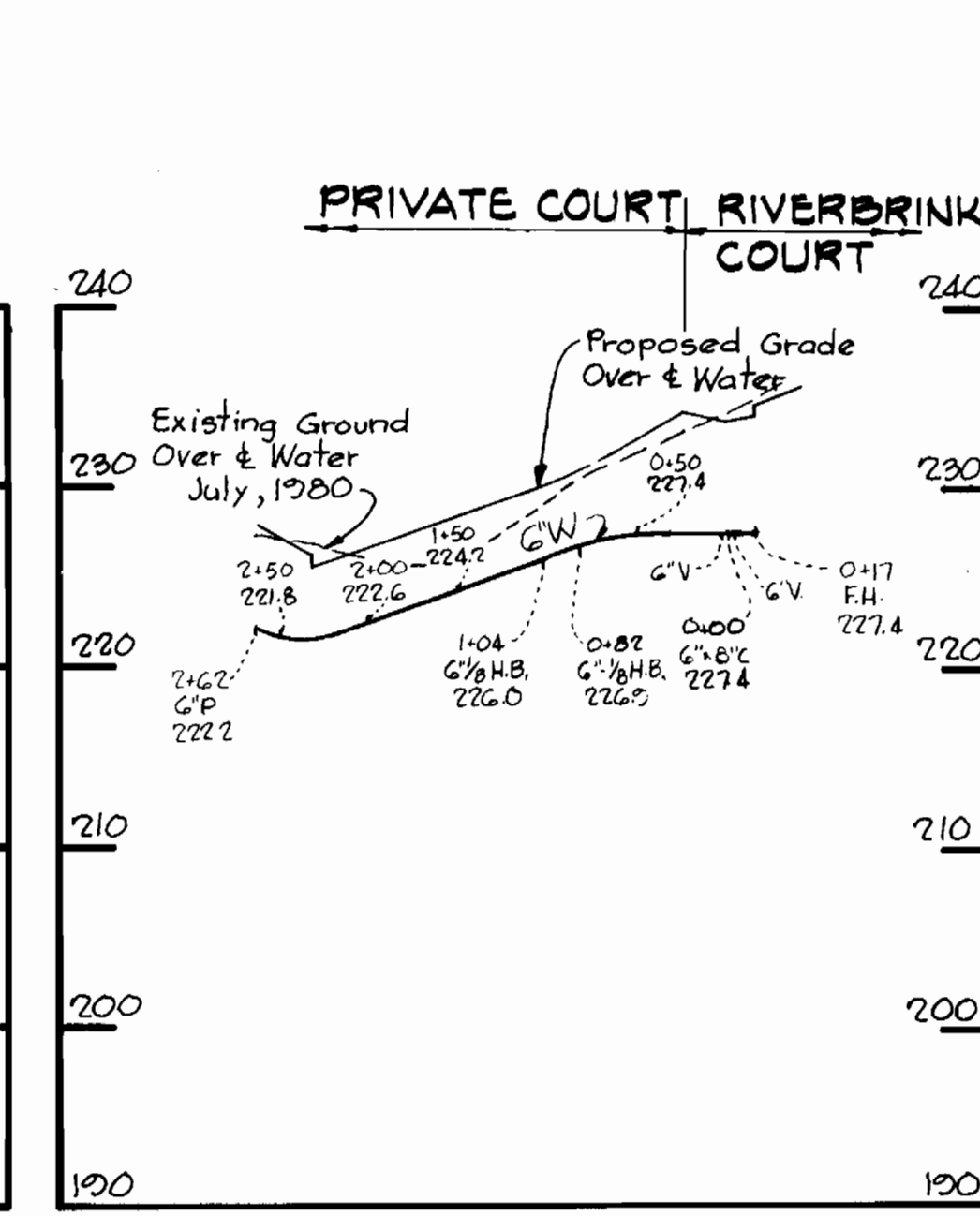
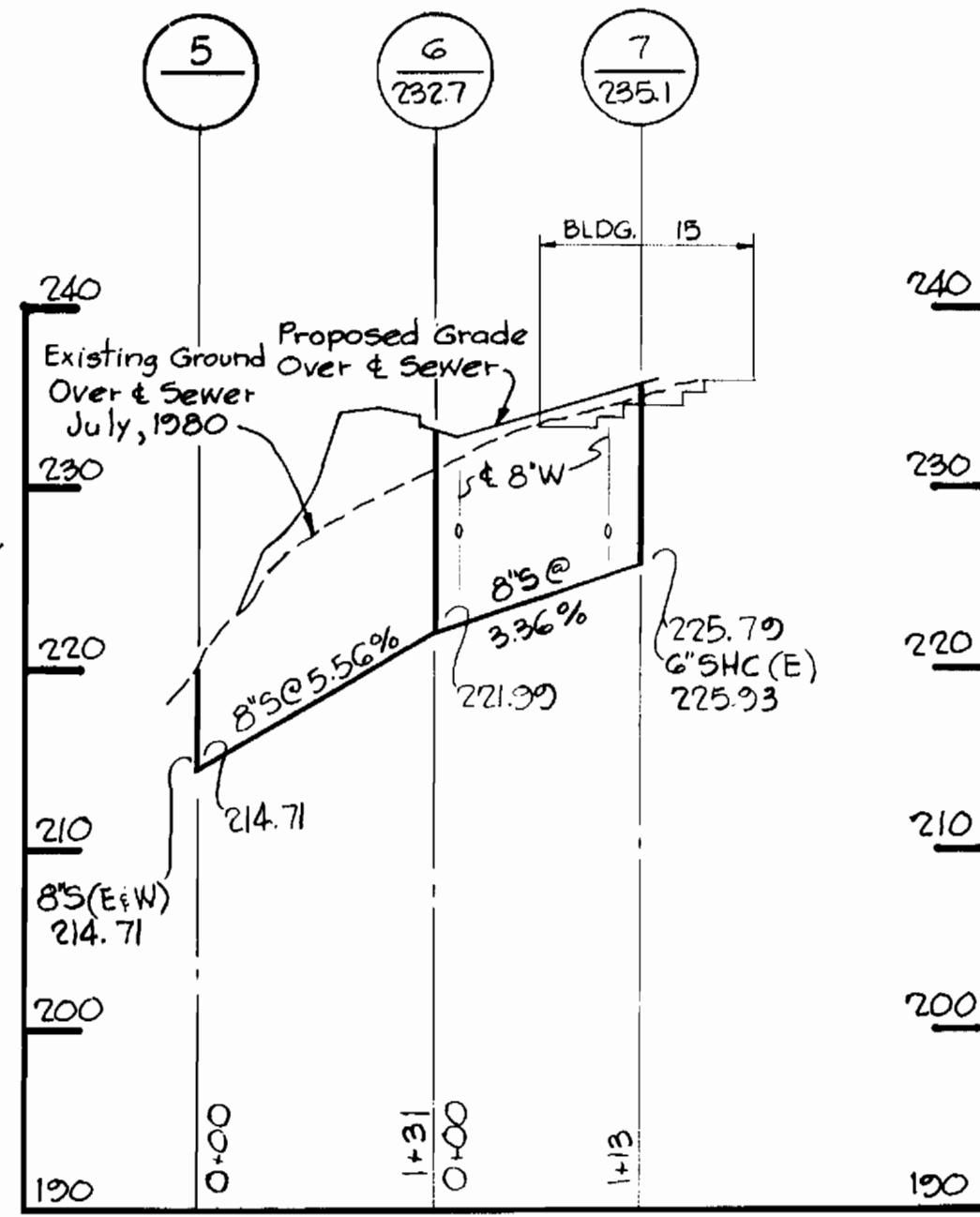
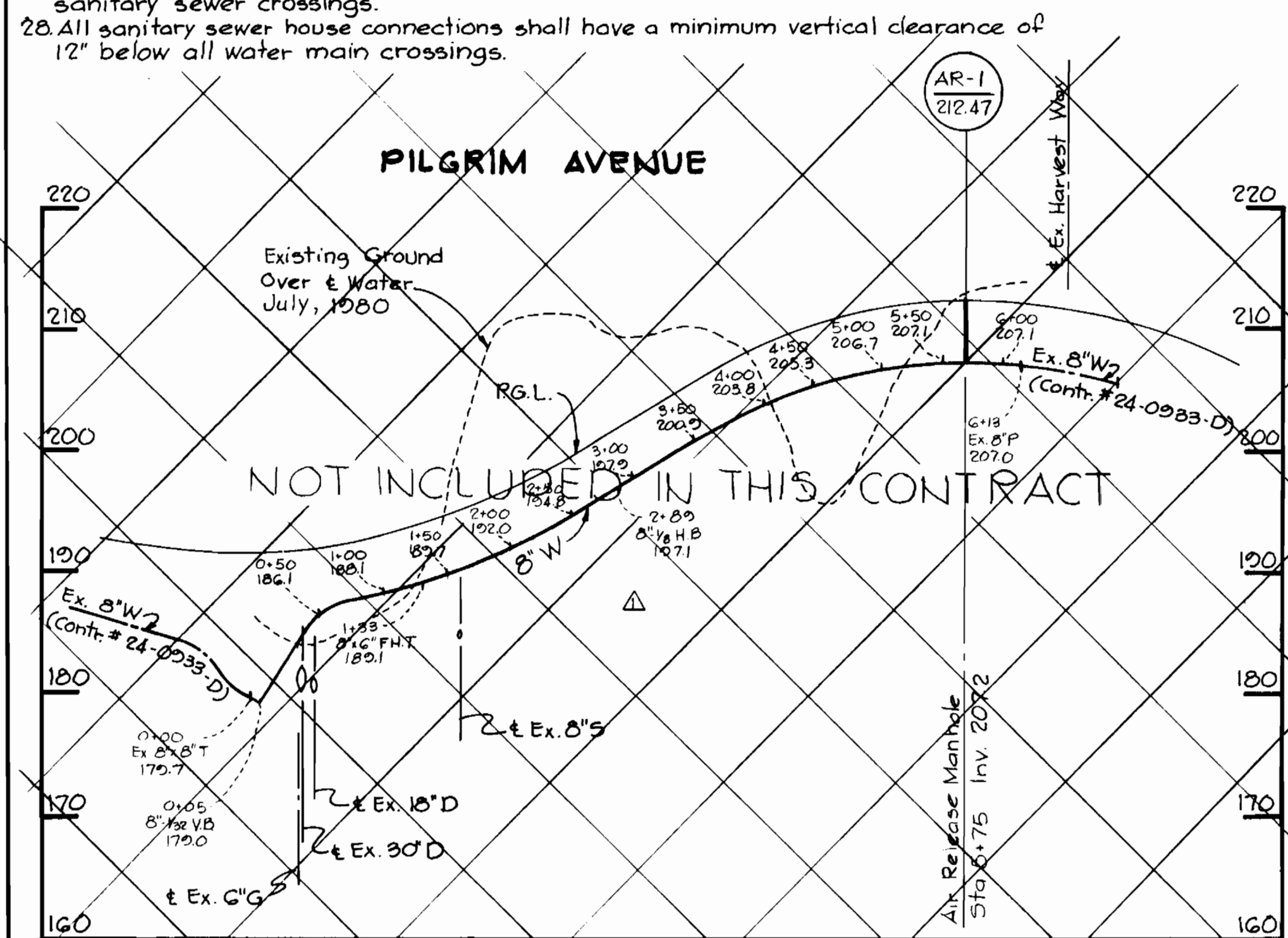
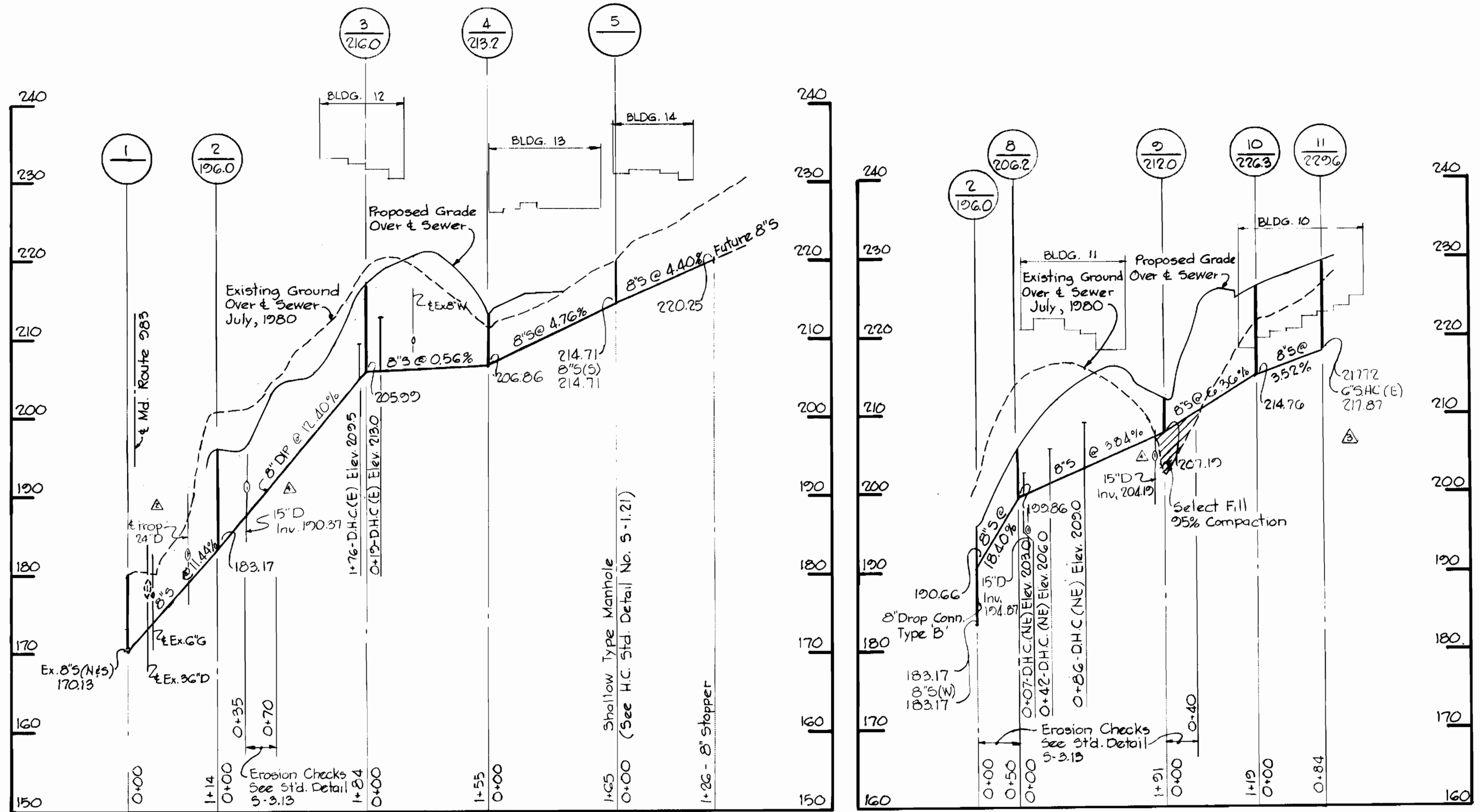
Settlers Landing Section 1, Area 2  
Contract No. 24-1023-D

5-15-81  
DATE

STATE OF MARYLAND  
PROFESSIONAL ENGR. NO. 23566

# GENERAL NOTES

- Approximate location of existing mains are shown. The contractor shall take all necessary precautions to protect existing mains and services and maintain uninterrupted supply. Any damage incurred shall be repaired immediately to the satisfaction of the Engineer, at the Contractor's expense.
- All horizontal controls are based on Maryland State Coordinates.
- All vertical controls are based on U.S.G.S. Datum.
- All pipe elevations shown are invert elevations.
- Clear all utilities by a minimum of 6'. Clear all poles by 2'-0" minimum or tunnel as required. Any cost incurred to the contractor for tunneling or bracing at poles shall be included in the unit prices bid for excavation and backfill.
- For details not shown on the drawing use Howard County Standard Details.
- For materials and construction methods use Howard County Standard Specifications.
- Contractor shall locate existing utilities a minimum of two (2) weeks in advance of construction operation in the vicinity of proposed utilities at his own expense.
- Contractor shall notify the following utilities or agencies at least five (5) working days before starting work shown on these plans:
  - State Highway Administration - 531-5533
  - Baltimore Gas & Electric Company - Underground Electric Distribution Customer Service - 685-0123
  - Baltimore Gas & Electric Company - Underground Gas Distribution Customer Service - 685-0123
  - Engineering - "Damage Control" - 234-5621
  - "Miss Utility" - 1-559-0100
  - Chesapeake & Potomac (C&P) Telephone Company - 725-9976
  - American Telephone and Telegraph - Cable Location Division - 393-3533
  - Colonial Pipeline Company - 781-4641
  - Bureau of Utilities Howard County - 992-2366
- Trees are to be protected from damage to maximum extent. Trees located within the construction strip are not to be removed or damaged by the contractor.
- Contractor shall remove trees, stumps and roots along line of excavation as directed by the Engineer. Payment for such removal shall be included in the unit price bid for excavation and backfill.
- Place regulation "Men Working" and warning signs as required to comply with Maryland State Highway Administration Manual of Traffic Control for Highway Construction and Maintenance Operations.
- All water mains to be C.I.P. or D.I.P. unless otherwise noted.
- Top of all water mains to have a minimum of 3'-1/2' cover unless otherwise noted.
- Valves adjacent to tees shall be strapped to tees.
- Block all fittings with concrete.
- Bury line elevations on fire hydrants shall be set to the elevations shown on the drawings. All fire hydrants shall be strapped and buttressed with concrete in accordance with standard details. Soil around the fire hydrant to be compacted in accordance with Section 5-15 of the Standard Specifications.
- All water house connections shall be for an inside meter setting.
- The contractor shall not operate any water main valves on the existing system.
- All sewer mains shall be C.S.P.X., V.C.P.X., PVC or A.C.P. Class 2400 unless otherwise noted.
- The contractor shall provide a joint in all sewer mains within 2'-0" of exterior manhole wall.
- All manholes shall be 4'-0" inside diameter, unless otherwise noted.
- Force mains shall be D.I.P. only.
- Manholes shown with 12" and 16" walls are brick manholes only.
- Manholes designated W.T. in plan and profile shall have watertight frame and covers, Standard Detail 5-12 (RCR-63A). Where watertight manhole covers and cover is used, set top of frame 1'-6" above finished grade.
- House(s) with the symbol "C.N.S." indicates that cellar can not be served.
- All water house connections shall have a minimum vertical clearance of 12" above all sanitary sewer crossings.
- All sanitary sewer house connections shall have a minimum vertical clearance of 12" below all water main crossings.



Rev.	Date	Description
1	12-15-85	Revised Addition of Storm Drains near MH 1, 2, 8 & 9
2	6-3-82	Revised length between MH's 10 & 11
3	6-3-82	Revised ground line between MH's 1 & 2
4	6-3-82	Deleted 8\"/>

Settler's Landing  
Section 1, Area 2  
Contract No. 24-1023-D

5-15-81  
DATE

PROFESSIONAL ENGR. NO. 10556

RIEMER-TRACY & ASSOCIATES, INC. 8659 BALTIMORE NATIONAL PIKE ELLICOTT CITY, MARYLAND 21043	DEPARTMENT OF PUBLIC WORKS HOWARD COUNTY, MARYLAND CHIEF, LAND DEVELOPMENT DIVISION CHIEF, BUREAU OF ENGINEERING CHIEF, BUREAU OF UTILITIES	CONTRACT NO. 24-1023-D	PROFILES OF WATER AND SEWER MAINS	SETTLERS LANDING SECTION - 1 AREA - 2 6TH ELECTION DISTRICT	DRAWING NO. 2 OF 2	SCALE H:1"=100' V:1"=10'
--	---	------------------------	-----------------------------------	--	--------------------	--------------------------