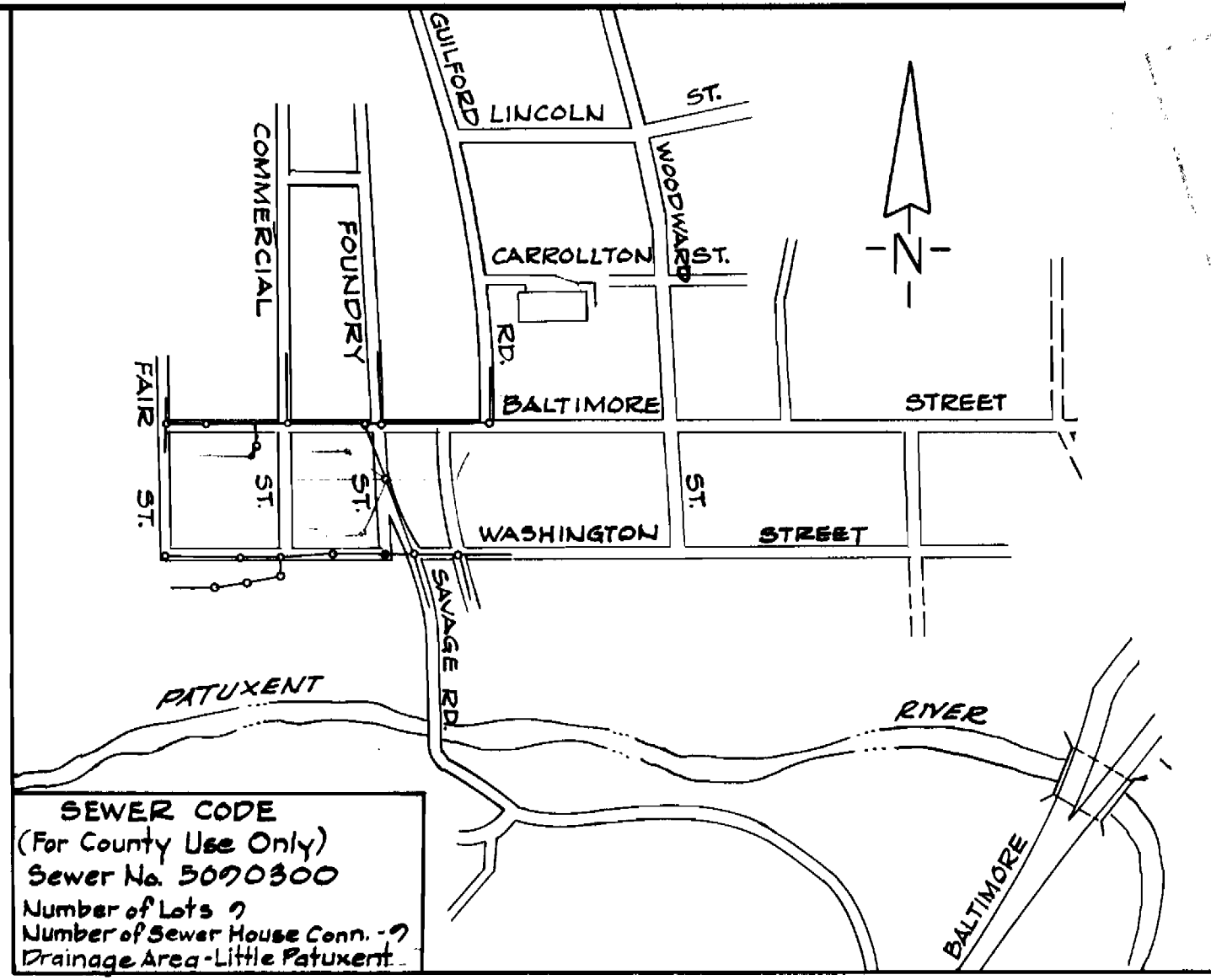


B.M. #2  
 Cut on Southwest corner of Inlet at  
 Southeast corner Baltimore St. and  
 Commercial St. Elev. 217.683

QUANTITIES		
ITEM	BID	AS BUILT MATERIAL/SUPPLIER
8" Sewer	251 LF	
6" Sewer	75 LF	
4" Sewer	164 LF	
M.H. Depth 4'	1 Ea.	
M.H. Greater Than 4'	3.0 VF	
M.L. Cleanout (L.H.)	13.5 VF	

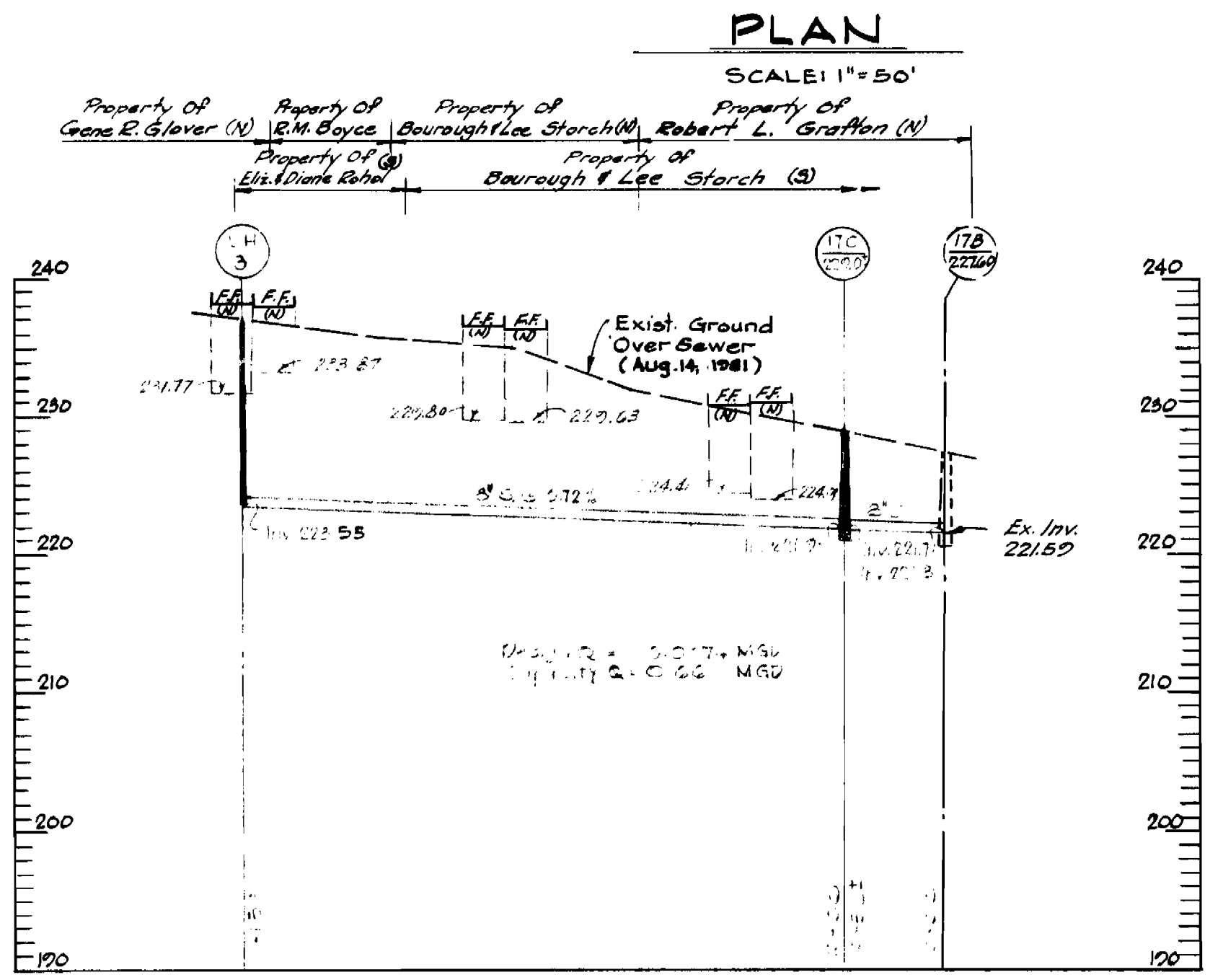


SEWER CODE  
 (For County Use Only)  
 Sewer No. 5070300  
 Number of Lots 7  
 Number of Sewer House Conn. 7  
 Drainage Area - Little Patuxent

VICINITY MAP  
 SCALE: 1"=600'

**GENERAL NOTES**

- Approximate location of existing mains are shown. The contractor shall take necessary precautions to protect existing mains and services and maintain in supply. Any damage incurred shall be repaired immediately to the satisfaction of the Engineer, at the Contractor's expense.
- All horizontal controls are based on Maryland State Coordinates.
- All vertical controls are based on U.S.G.S. Datum.
- All pipe elevations shown are invert elevations.
- Clear all utility by a minimum of 6". Clear all poles by 2'-0" minimum or tunnel as required. Any cost incurred to the contractor for tunneling or bracing at poles shall be included in unit prices bid for construction of the main.
- For details not shown on the drawings use Howard County Standard Details.
- For materials and construction methods use Howard County Standard Specifications.
- Contractor shall locate existing utilities a minimum of two (2) weeks in advance of construction operations in the vicinity of proposed utilities at his own expense.
- Contractor shall notify the following utilities or agencies at least five (5) working days before starting work shown on these plans:  
 State Highway Administration - 531-5533  
 Baltimore Gas & Electric Company - Underground Electric Distribution Customer Service - 685-0123  
 Baltimore Gas & Electric Company - Underground Gas Distribution Customer Service - 685-0123  
 Engineering - "Damage Control" 234-5621  
 "Miss Utility" 1-557-0100  
 Chesapeake & Potomac (CAP) Telephone Company 725-7776  
 American Telephone and Telegraph - Cable Location Division 393-3553  
 Colonial Pipeline Company 781-4641  
 Bureau of Utilities Howard County 772-2366
- Trees are to be protected from damage to maximum extent. Trees located within the construction strip are not to be removed or damaged by the contractor.
- Contractor shall remove trees, stumps and roots along line of excavation as directed by the Engineer. Payment for such removal shall be included in the unit price bid for construction of the main.
- Place regulation "Men Working" and warning signs as required to comply with Maryland State Highway Administration Manual of Traffic Control for Highway Construction and Maintenance Operations.
- All sewer mains shall be C.S.P.X., R.C.S.P., V.C.P.X., A.C.P. Class 2400 or P.V.C. unless otherwise noted.
- The contractor shall provide a joint in all sewer mains within 2'-0" of exterior manhole wall.
- All manholes shall be 4'-0" inside diameter, unless otherwise noted.
- House(s) with the symbol "C.N.S." indicates that cellar can not be served.



PROFILE  
 SCALE: HORIZ. 1"=50'  
 VERT. 1"=10'

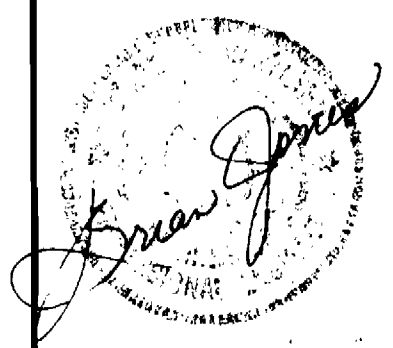
**SEDIMENT AND EROSION CONTROL MEASURES**

The Contractor Shall Comply With All Requirements Of Erosion And Sediment Control As Specified In Section 15.05 OF THE HOWARD COUNTY STANDARD SPECIFICATIONS AND DETAILS FOR CONSTRUCTION (Design Vol. III)

**BY THE DEVELOPER**

I Certify That All Construction Will Be Done According To This Plan Of Development And Plan For "Erosion And Sediment Control" And I Also Authorize Periodic On-site Inspection By The Howard Soil Conservation District Or Their Authorized Agent, As Deemed Necessary

Signature \_\_\_\_\_ Date \_\_\_\_\_  
 Reviewed For Howard County S.C.D. And Meets Technical Requirements  
 Signature \_\_\_\_\_ Date 1-27-82  
 U.S. Soil Conservation Service  
 This Development Plan Is Approved For Soil Erosion And Sediment Control By The Howard Soil Conservation District  
 Signature \_\_\_\_\_ Date 1-27-82  
 Approved \_\_\_\_\_ Date \_\_\_\_\_  
 Howard S.C.D.



DEPARTMENT OF PUBLIC WORKS  
 HOWARD COUNTY, MARYLAND  
 Director of Public Works: *John F. Newman* 1-27-82  
 Chief-Bureau of Engineering: \_\_\_\_\_  
 Chief-Bureau of Utilities: *Allen S. Brown* 1/27/82

JAMES PETRICA & ASSOCIATES, INC.  
 CONSULTING ENGINEERS  
 409 JEFFERSON BUILDING  
 TOWSON, MARYLAND

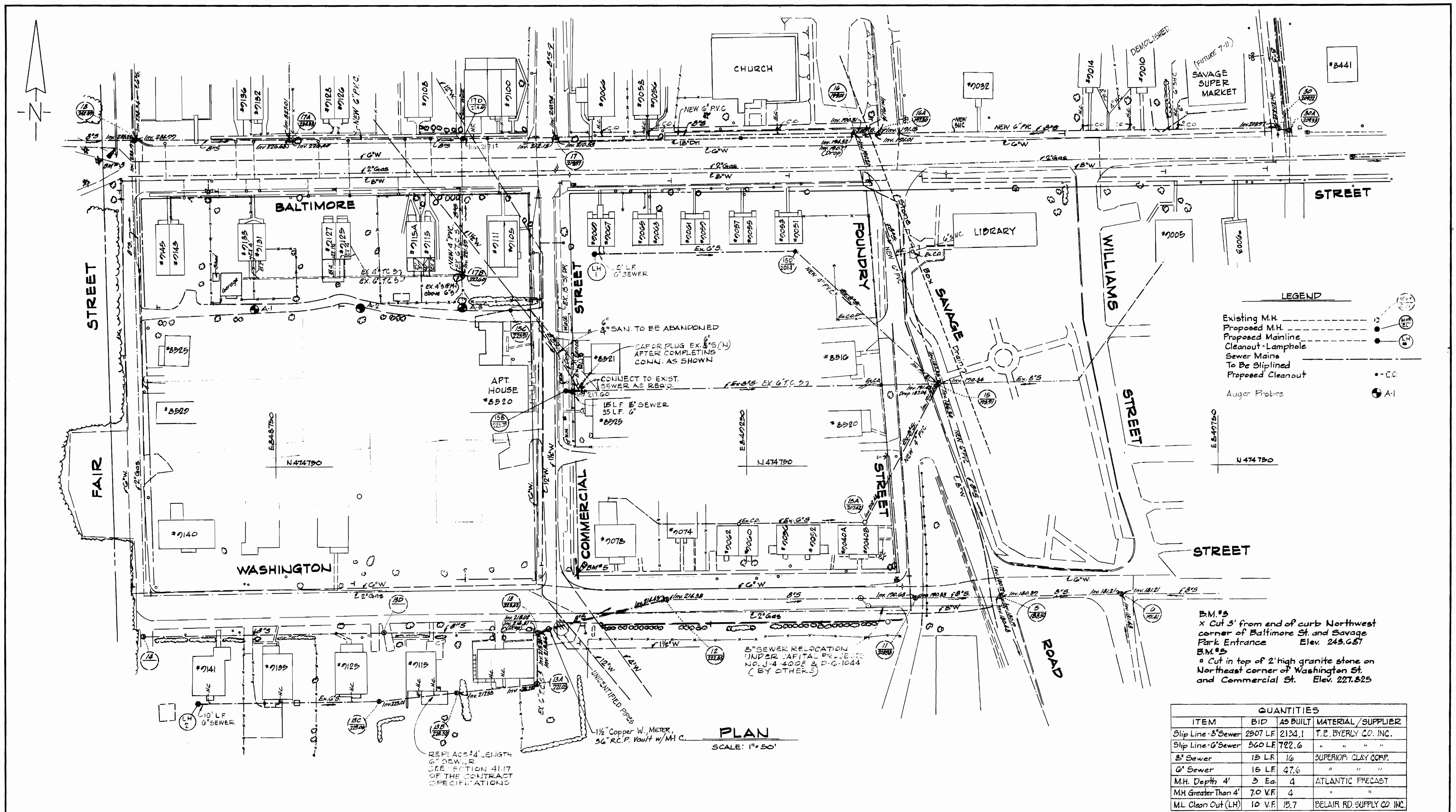
CONTRACT NO. 20-1020  
 PROJECT NO. S-6112

PLAN AND PROFILE  
 SEWER MAIN  
 REHABILITATION

SAVAGE  
 ELECTION DISTRICT - GUILFORD NO. 6

SAVAGE SEWER REHABILITATION  
 PROJECT NO. S-6112  
 CONTRACT NO. 20-1020  
 DRAWING NO. 1  
 OF 2  
 SCALE AS SHOWN

AS-BUILT



**LEGEND**

- Existing M.H. (Symbol)
- Proposed M.H. (Symbol)
- Proposed Mainline (Symbol)
- Cleanout - Lamphole (Symbol)
- Sewer Mains To Be Sliplined (Symbol)
- Proposed Cleanout (Symbol)
- Auger Probes (Symbol)

B.M.#3  
x Cut 3' from end of curb Northwest corner of Baltimore St and Savage Park Entrance Elev. 249.65'

B.M.#5  
x Cut in top of 2' high granite stone on Northeast corner of Washington St. and Commercial St. Elev. 227.825

QUANTITIES			
ITEM	BID	AS BUILT	MATERIAL/SUPPLIER
Slip Line - 8" Sewer	2907 LF	2134.1	T.E. BYERLY CO. INC.
Slip Line - 6" Sewer	560 LF	722.6	" " " "
8" Sewer	15 LF	16	SUPERIOR CLAY CORP.
6" Sewer	15 LF	47.6	" " " "
M.H. Depth 4'	3 Ea.	4	ATLANTIC PRECAST
M.H. Greater Than 4'	7.0 V.F.	4	" " " "
M.L. Clean Out (LH)	10 V.F.	15.7	BELAIR RD. SUPPLY CO. INC.

**PLAN**  
SCALE: 1" = 50'

REPLACE 14' LENGTH 6" SEWER SEE SECTION 4117 OF THE CONTRACT SPECIFICATIONS



**DEPARTMENT OF PUBLIC WORKS**  
HOWARD COUNTY, MARYLAND

*Wm. F. Nunn* 1-28-82  
DIRECTOR OF PUBLIC WORKS — DATE

*Robert W. Bennett* 1-28-82  
CHIEF-BUREAU OF UTILITIES — DATE

*Allen S. Brown* 1/27/82  
CHIEF-UTILITY DIVISION — DATE

**JAMES PETRICA & ASSOCIATES, INC.**  
CONSULTING ENGINEERS  
409 JEFFERSON BUILDING  
TOWSON, MARYLAND

CONTRACT NO. 20-1020  
PROJECT NO. S-6112

PLAN AND DETAILS  
SEWER MAIN  
REHABILITATION

SAVAGE  
ELECTION DISTRICT — GUILFORD NO. 6

SAVAGE SEWER REHABILITATION  
PROJECT NO. S-6112  
CONTRACT NO. 20-1020

DRAWING NO. 2  
OF 2

SCALE AS SHOWN

AS-BUILT