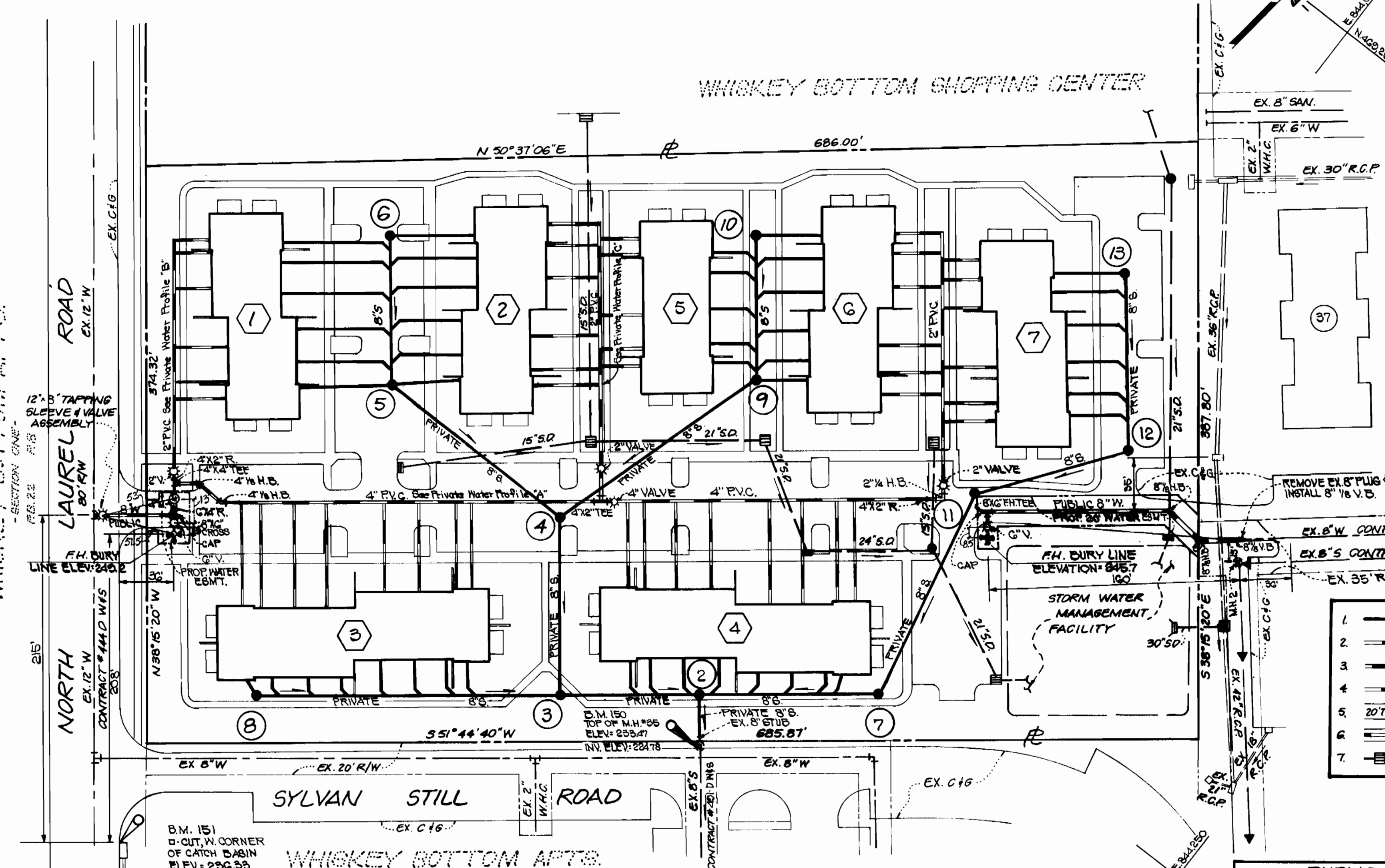
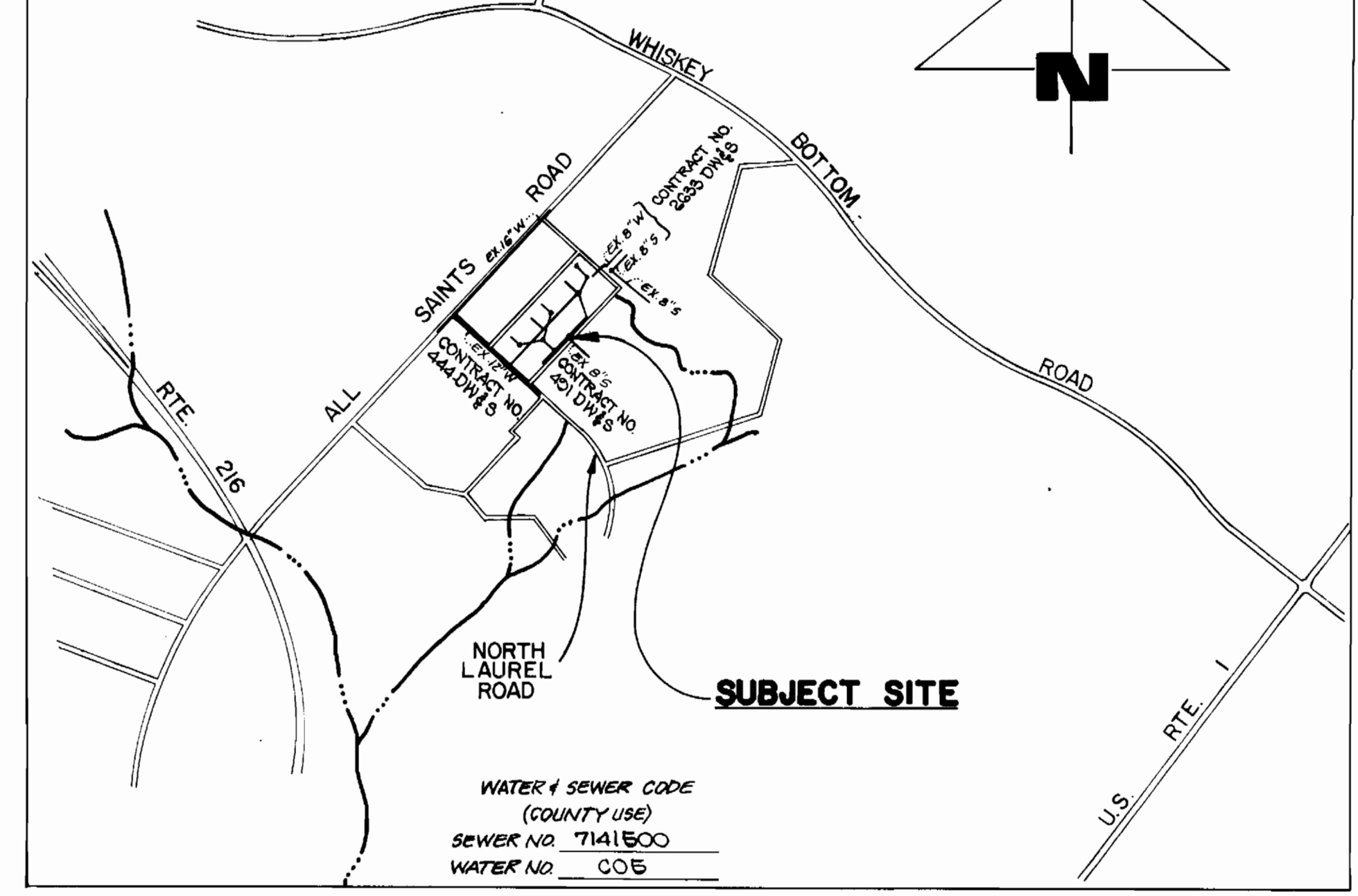
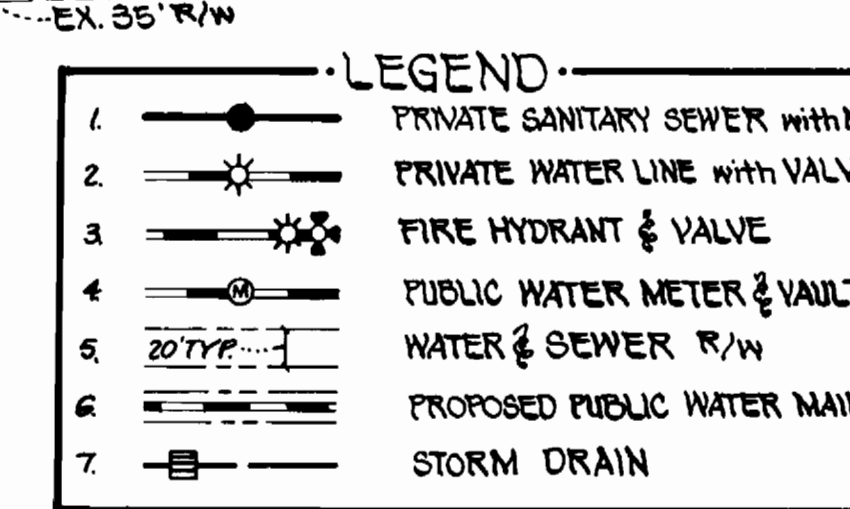


VICINITY MAP
SCALE: 1" = 600'



GENERAL NOTES

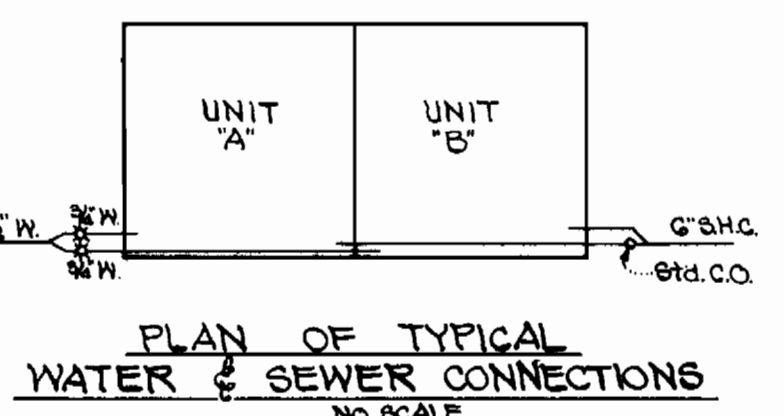
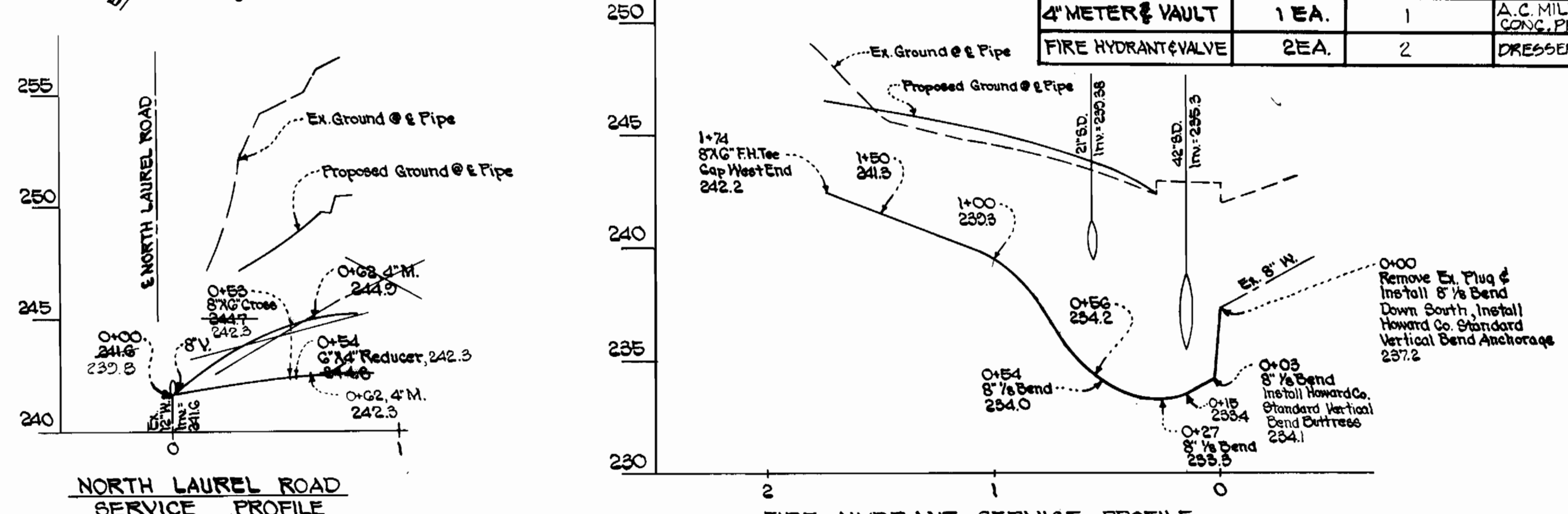
- APPROXIMATE LOCATION OF EXISTING MAINS ARE SHOWN. THE CONTRACTOR SHALL TAKE ALL NECESSARY PRECAUTIONS TO PROTECT EX. MAINS & SERVICES AND MAINTAIN UNINTERRUPTED SUPPLY. ANY DAMAGE INCURRED SHALL BE REPAIRED IMMEDIATELY TO THE SATISFACTION OF THE ENGINEER, AT THE CONTRACTOR'S EXPENSE.
- ALL PIPE ELEVATIONS SHOWN ARE INVERT ELEVATIONS.
- CLEAR ALL UTILITIES BY A MINIMUM OF 6". CLEAR ALL POLES BY 2'-0" MIN. OR TUNNEL AS REQUIRED. ANY COST INCURRED TO THE CONTRACTOR FOR TUNNELING OR BRACING AT POLES SHALL BE INCLUDED IN UNIT PRICES BID FOR CONSTRUCTION OF THE MAIN.
- FOR DETAILS NOT SHOWN ON THE DRAWINGS, USE HOWARD CO. STD. DETAILS.
- FOR MATERIALS & CONSTRUCTION METHODS, USE HOWARD CO. STD. SPECIFICATIONS.
- CONTRACTOR SHALL LOCATE EX. UTILITIES A MINIMUM OF 2 WKS. IN ADVANCE OF CONSTRUCTION OPERATIONS IN THE VICINITY OF PROPOSED UTILITIES AT HIS OWN EXPENSE.
- CONTRACTOR SHALL NOTIFY THE FOLLOWING UTILITIES AT LEAST 5 WORKING DAYS BEFORE STARTING WORK SHOWN ON THESE PLANS:
 - BALTIMORE GAS & ELECTRIC CO. - UNDERGROUND ELECTRIC DISTRIBUTION - CUSTOMER SERVICE - 685-0123.
 - ENGINEERING - "DAMAGE CONTROL" - 23A-5621.
 - MISS UTILITY - 1-559-0100
 - CHESAPEAKE & POTOMAC (CIP) TELEPHONE CO. - 725-9976.
 - BUREAU OF UTILITIES, HOWARD CO. - 942-2366
- ALL WATER MAINS TO BE D.I.P. UNLESS OTHERWISE NOTED.
- TOP OF ALL WATER MAINS TO HAVE A MIN. OF 3.5' COVER UNLESS OTHERWISE NOTED.
- VALVES ADJACENT TO TEES SHALL BE STRAPPED TO TEES.
- BLOCK ALL FITTINGS WITH CONCRETE.
- BURY LINE ELEVATIONS ON FIRE HYDRANTS SHALL BE SET TO THE ELEVATIONS SHOWN ON THE DRAWINGS. ALL FIRE HYDRANTS SHALL BE STRAPPED & BUTTRESSED WITH CONCRETE IN ACCORDANCE WITH STD. DETAILS. SOIL AROUND THE F.H. TO BE COMPACTED IN ACCORDANCE WITH SECTION 8701 & 8705 OF THE STD. SPECIFICATIONS.
- THE CONTRACTOR SHALL NOT OPERATE ANY WATER MAIN VALVES ON THE EX. SYSTEM.
- ALL SEWER MAINS SHALL BE C.B.P., R.C.S.P., V.C.P., A.C.P. CLASS 3000 OR P.V.C. UNLESS NOTED.
- THE CONTRACTOR SHALL PROVIDE A JOINT IN ALL SEWER MAINS WITHIN 2'-0" OF EXTERIOR MANHOLE WALL.
- ALL MANHOLES SHALL BE 4'-0" INSIDE DIAMETER, UNLESS OTHERWISE NOTED.
- WATER MAIN & WATER HOUSE CONN. MUST BE PLACED 50' AS TO HAVE AT LEAST 1' SEPARATION FROM THE SANITARY SEWER AS THEY PASS ABOVE IT.
- WATER & SEWER SERVICE TO THESE LOTS WILL BE GRANTED UNDER THE PROVISIONS OF SECTION 18.122B OF THE HOWARD CO. CODE.
- ALL SANITARY SEWERS ARE 6" DIAMETER.
- ALL SEWER HOUSE CONNECTIONS ARE 6" TO WITHIN 5' OF BUILDING.
- ALL WATER TO BE 1 1/2" TO WITHIN 5' OF BUILDING.
- ALL SANITARY SEWER AND WATER MAINS ARE PRIVATELY OWNED AND MAINTAINED EXCEPT AS SHOWN.
- ALL HORIZONTAL CONTROLS ARE BASED ON MARYLAND STATE COORDINATES.
- ALL VERTICAL CONTROLS ARE BASED ON U.S.G.S. DATUM.
- PLACE REGULATION "MEN WORKING" AND WARNING SIGNS AS REQUIRED TO COMPLY WITH MARYLAND STATE HIGHWAY ADMINISTRATION MANUAL OF TRAFFIC CONTROL FOR HIGHWAY CONSTRUCTION AND MAINTENANCE OPERATIONS.
- THE CONTRACTOR SHALL INSTALL 4" METER VAULT AS PER DETAIL SHOWN IN ARTICLE 40.00, SPECIAL PROVISION AT 40.10.



PUBLIC WATER QUANTITIES

ITEM	EST'D	AS-BUILT	SUPPLIER
8" WATER	227 L.F.	210	Griffin D.I.P.
4" WATER	20 L.F.	6	" "
4" METER & VAULT	1 EA.	1	A.C. MILLER CONC. PRODUCTS
FIRE HYDRANT & VALVE	2 EA.	2	DRESSER, M.P.H.

PROFILE SCALES
HORIZ. 1" = 50' VERT. 1" = 5'



Sediment Control Measures will be implemented in accordance with Article No. 18 of the Specifications & with Site Development Plan, Drawings 5 & 6 Sediment & Erosion Control, 803 & 807, 11 & 12, 13 & 14.

REVIEWED FOR HOWARD SOIL CONSERVATION DISTRICT AND MEETS TECHNICAL REQUIREMENT
Signature: [Signature] DATE: 3-4-83
U.S. SOIL CONSERVATION SERVICE

This Development Plan is approved for Soil Erosion and Sediment Control by the Howard Soil Conservation District.
APPROVED: [Signature] DATE: 3-16-83
Howard S.C.D.

DEPARTMENT OF PUBLIC WORKS
HOWARD COUNTY, MARYLAND

Director of Public Works - DATE: 3-21-83
Chief - Bureau of Engineering - DATE: [Signature] 3-21-83
Chief - Bureau of Utilities - DATE: 3-22-83

Date	REVISION	By
02/18/83	New grade Service Pro.	WJL

CONTRACT NO. 44-1016-D

JOHNSON, MIRMIRAN & THOMPSON
2568A Riva Road
Annapolis, Maryland 21401

WHISKEY BOTTOM SQUARE APTS.
GUILFORD (6th) ELECTION DISTRICT
HOWARD COUNTY, MARYLAND

DRAWING NO. 1 OF 1
SCALE AS SHOWN