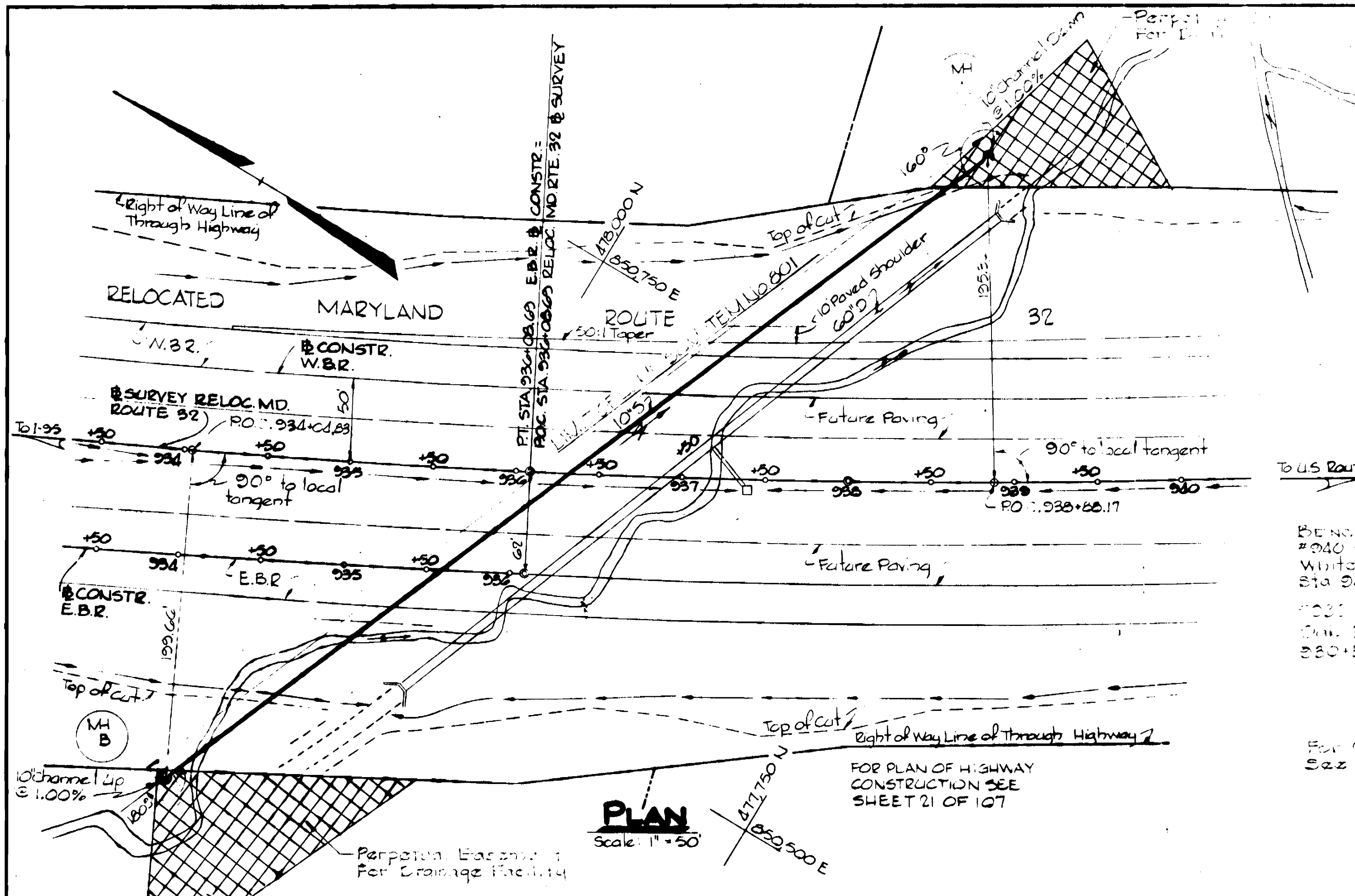


WYS 1004 see file drawer # 656

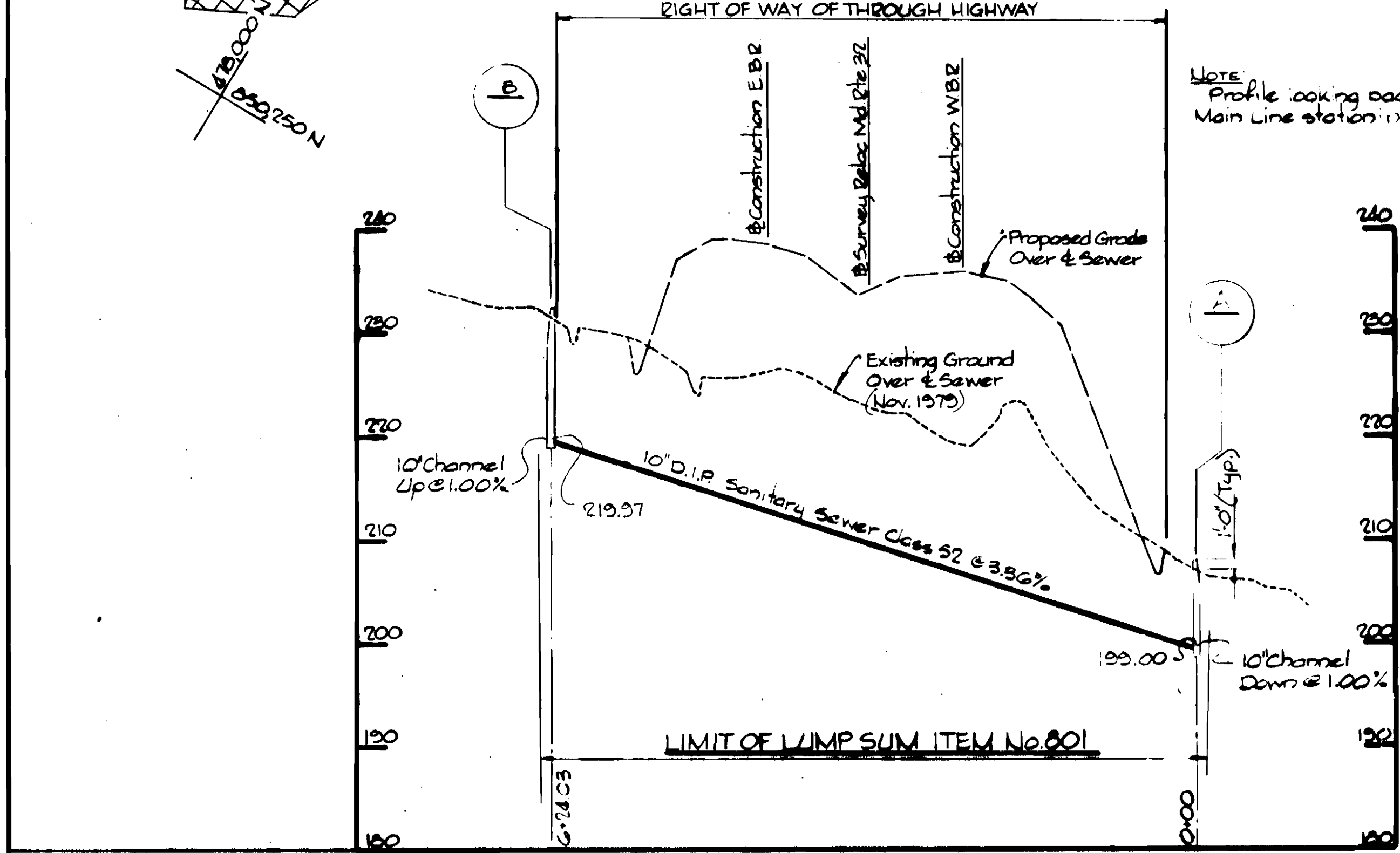
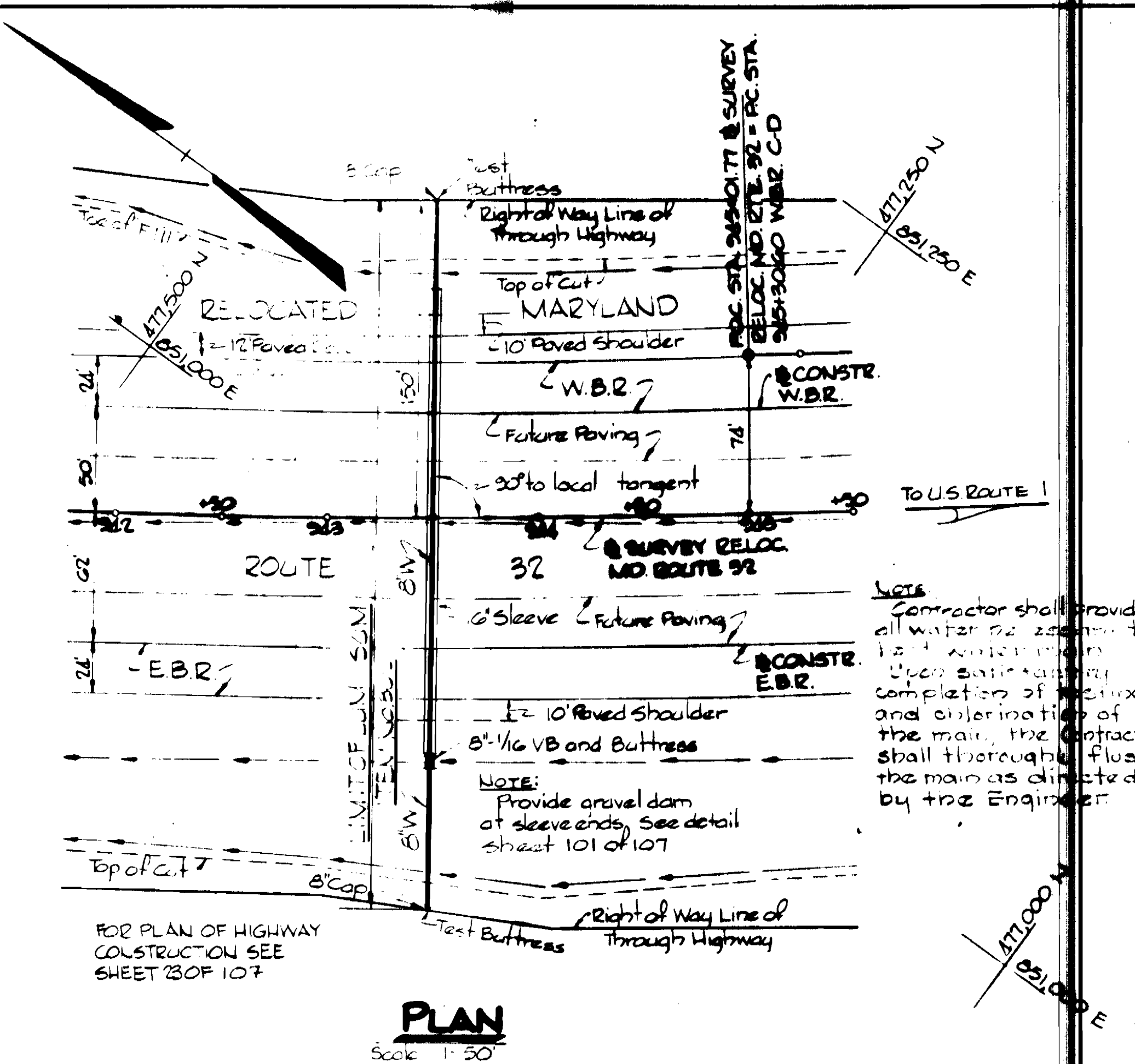
File # 656



BENCH MARK
#940 1/2" Lag Bolt in 30" Dia
White Oak 200' Lt @ Survey
Sta 940+00 Elev 208.771

#931 1/2" Lag Bolt in 12" Dia
Oak 220' Lt @ Survey Sta
930+50 Elev 249.014

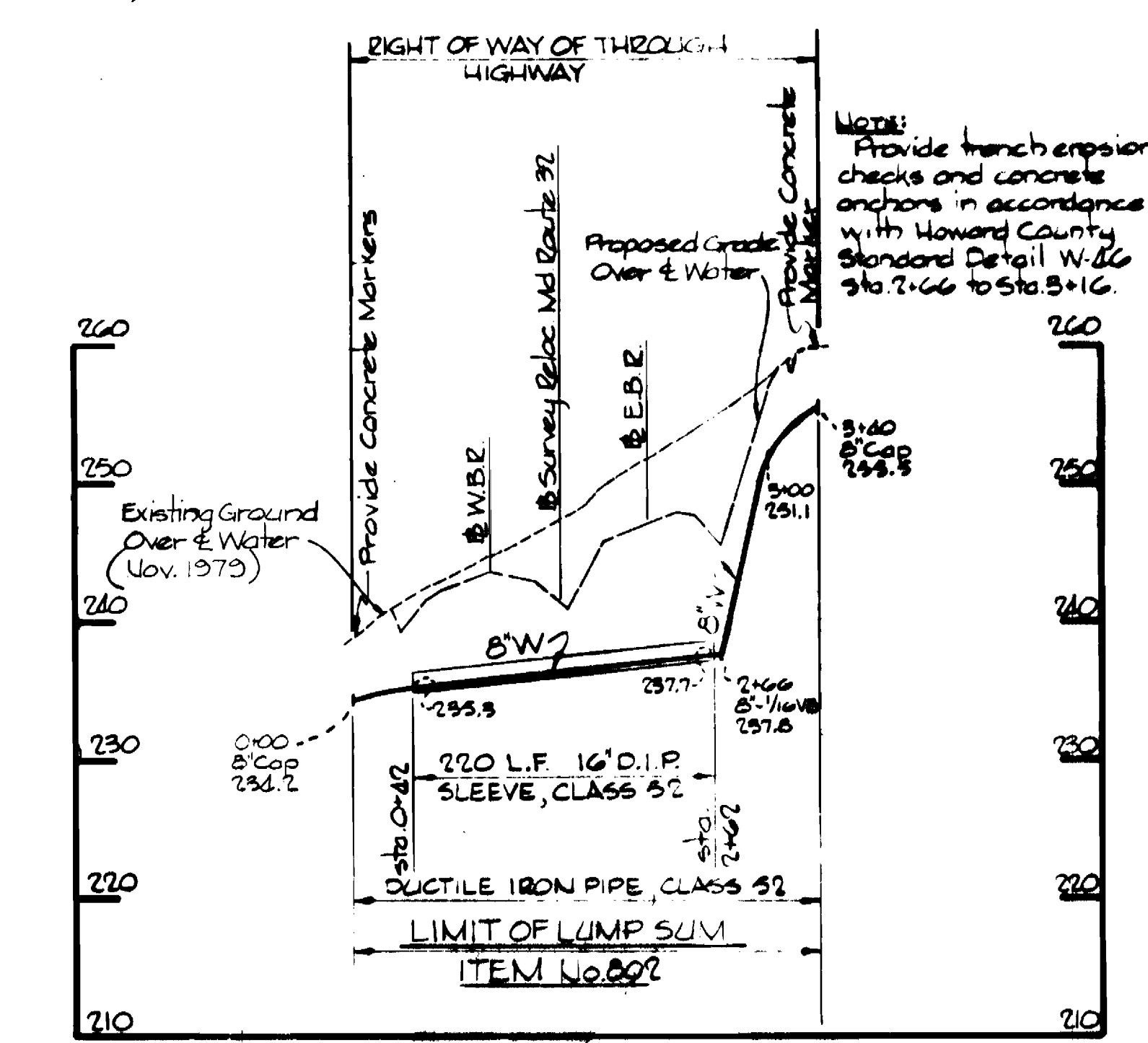
FOR SIZES AND NOTES
SEE SHEET 101 OF 107



QUANTITIES		
ITEM	PROPOSED	AS-BUILT
10' D.I.P. Sewer Main	623 L.F.	
Manholes	2 EA.	
8" D.I.P. Water Main	340 L.F.	
10' D.I.P. Sleeve	220 L.F.	

TYPE OF BUILDINGS N/A
NUMBER OF LOTS N/A
NUMBER OF W.H.C. 0
NUMBER OF S.H.C. 0
DRAINAGE AREA SAVAGE WWTP

WATER AND SEWER CODE
WATER No. 201
SEWER No. 5090000



DEPARTMENT OF PUBLIC WORKS
HOWARD COUNTY, MARYLAND

CENTURY ENGINEERING, INC.
CONSULTING ENGINEERS - PLANNERS
TOWSON, MARYLAND

DEPARTMENT OF PUBLIC WORKS
HOWARD COUNTY, MARYLAND
CONTRACT # 0292-033-770
CAPITAL PROJECT W-8-8117

PLAN AND PROFILE OF
SEWER AND WATER FACILITIES
CROSSING STA. 936+ AND STA. 943+

RELOCATED MARYLAND ROUTE 32
I-95 TO HOWARD / ANNE ARUNDEL
COUNTY LINE

DRAWING NO. 95 OF 107
SCALE AS SHOWN