

SEQUENCE OF CONSTRUCTION
STATION 14+ TO STATION 27+

1. PLACE STRAW BALE DIKE (SBD) AND/OR SILT FENCE (SF) FOR STAGING AREAS. PLACE SBD TO PROTECT ALL AREAS WITH 5% CROSS SLOPE WHICH ARE TO BE GRADED.
2. CLEAR STAGING AREAS AND WORKING AREAS.
3. CONSTRUCT PVC, STATION 27+ TO STATION 22+.
4. CONSTRUCT LOG SUPPORT FOR FILL, STATION 22+ TO STATION 18+.
5. CONSTRUCT FLEXIBLE PIPE, STATION 22+ TO STATION 18+.
6. PLACE SBD, STATION 22+ TO STATION 18+ (THIS MAY BE A SHORT DIKE PROTECTING WORK AREA AND MOVED AHEAD AS FILL IS STABILIZED).
7. REMOVE SBD, STATION 22+ TO STATION 18+. PLACE SBD, STATION 18+ TO STATION 14+.
8. CONSTRUCT FLEXIBLE PIPE, STATION 18+ TO STATION 14+. STABILIZE GROUND.
9. RESTORE STAGING AREAS.
10. REMOVE ALL SBD AND/OR SF.

GENERAL NOTES

1. APPROXIMATE LOCATION OF EXISTING MAINS ARE SHOWN. THE CONTRACTOR SHALL TAKE ALL NECESSARY PRECAUTIONS TO PROTECT EXISTING MAINS AND SERVICES AND MAINTAIN UNINTERRUPTED SUPPLY. ANY DAMAGE INCURRED SHALL BE REPAIRED IMMEDIATELY TO THE SATISFACTION OF THE ENGINEER, AT THE CONTRACTOR'S EXPENSE.
2. ALL PIPE ELEVATIONS SHOWN ARE INVERT ELEVATIONS.
3. CONTRACTOR SHALL LOCATE EXISTING UTILITIES A MINIMUM OF TWO WEEKS IN ADVANCE OF CONSTRUCTION OPERATIONS IN THE VICINITY OF UTILITIES AT HIS EXPENSE.
4. FOR DETAILS NOT SHOWN ON THE DRAWINGS, USE HOWARD COUNTY STANDARD DETAILS.
5. FOR MATERIALS AND CONSTRUCTION REQUIREMENTS, USE HOWARD COUNTY STANDARD SPECIFICATIONS, EXCEPT AS SHOWN.
6. ALL HORIZONTAL CONTROLS ARE BASED ON MARYLAND STATE COORDINATES.
7. ALL VERTICAL CONTROLS ARE BASED ON USGS DATUM.
8. CONTRACTOR SHALL NOTIFY THE FOLLOWING UTILITIES OR AGENCIES AT LEAST FIVE (5) WORKING DAYS BEFORE STARTING WORK SHOWN ON THESE PLANS.
STATE HIGHWAY ADMINISTRATION - 581-5538
BALTIMORE GAS AND ELECTRIC COMPANY
UNDERGROUND ELECTRIC AND GAS DISTRIBUTION-CUSTOMER SERVICE-695-0123
DAMAGE CONTROL - 296-5621
"MISS UTILITY" - 1 - 588-0100
BUREAU OF UTILITIES HOWARD COUNTY - 992-2366
9. TREES ARE TO BE PROTECTED FROM DAMAGE TO MAXIMUM EXTENT.
10. CONTRACTOR SHALL REMOVE TREES, STUMPS AND ROOTS ALONG LINE OF EXCAVATION AS DIRECTED BY THE ENGINEER.
11. ALL SEWER MAINS SHALL BE P.V.C. UNLESS OTHERWISE NOTED. CRUSHED STONE ENVELOPE (SECTION 37.06-3) IS NOT REQUIRED.

FOR AS-BUILTS, SEE DRAWINGS 4, 5, 6 or 6

Middle Patuxent Interim Sewer Village of Kings Contrivance Contract No. 30-0999-D

SEDIMENT CONTROL MEASURES FOR THIS CONTRACT WILL BE IMPLEMENTED IN ACCORDANCE WITH ARTICLE 15, STANDARD SPECIFICATIONS

REVIEWED FOR HOWARD SOIL CONSERVATION DISTRICT AND MEETS TECHNICAL REQUIREMENT
SIGNATURE: [Signature] DATE: 7-15-81
U.S. SOIL CONSERVATION SERVICE

THIS DEVELOPMENT PLAN IS APPROVED FOR SOIL EROSION AND SEDIMENT CONTROL BY THE HOWARD COUNTY CONSERVATION DISTRICT.
APPROVED: [Signature] DATE: 7-15-81
HOWARD S.C.D.

DEPARTMENT OF PUBLIC WORKS
HOWARD COUNTY, MARYLAND
DIRECTOR OF PUBLIC WORKS - DATE: 7-15-81
CHIEF - BUREAU OF UTILITIES - DATE: 7-15-81
CHIEF - BUREAU OF ENGINEERING - DATE: 7-15-81
CHIEF - LAND DEVELOPMENT - DIVISION - DATE: 7-15-81

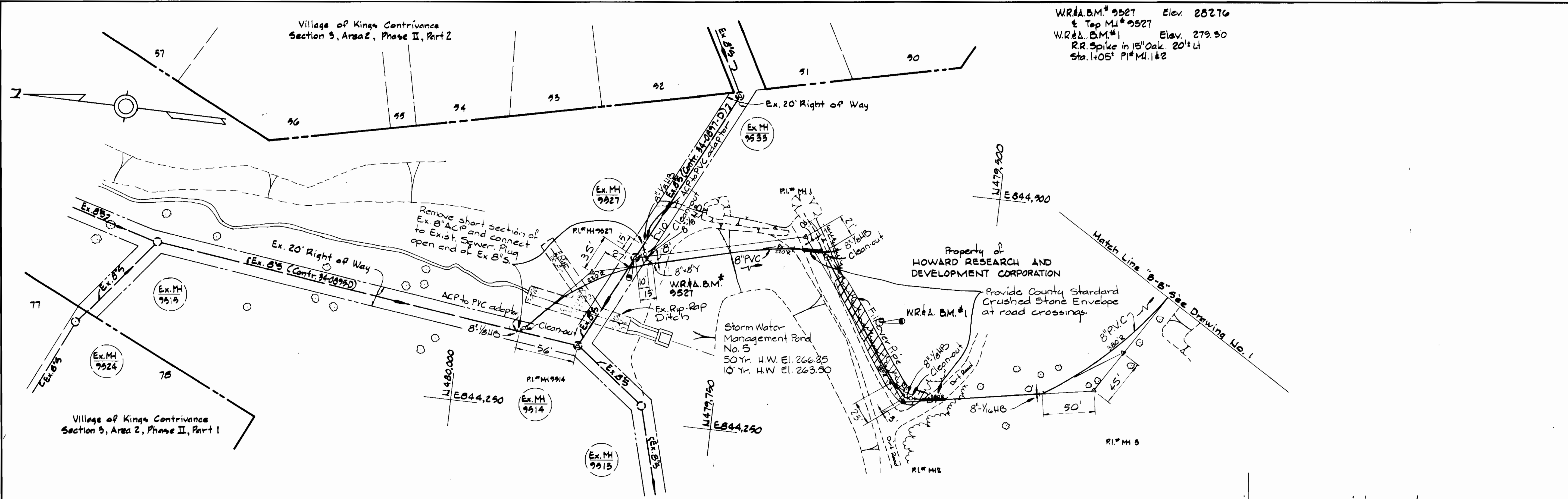
WR&A B.M.#2 Elev. 220.95
R.R. Spike in 18' Oak, 15" Lt.
Sta. 0+30', P.I.# M1 d&S.
WR&A B.M.#3 Elev. 241.52
R.R. Spike in 10' Walnut, 50" R.
Sta. 0+85', P.I.# M1 d&S.
WR&A B.M.#4 Elev. 221.24
R.R. Spike in 40' Beech, 15" R.
P.I.# 10
WR&A B.M.#5 Elev. 217.85
R.R. Spike in 20' Oak, 4" Lt.
P.I.# 15
WR&A B.M.#6 Elev. 215.55
R.R. Spike in 15' Pop., 5" R.
Sta. 0+75', P.I.# 115&116.

WHITMAN, REQUARDT AND ASSOCIATES
ENGINEERS
2315 ST. PAUL ST.
BALTIMORE, MARYLAND

CONTRACT NO. 30-0999-D PLAN OF SEWER MAINS

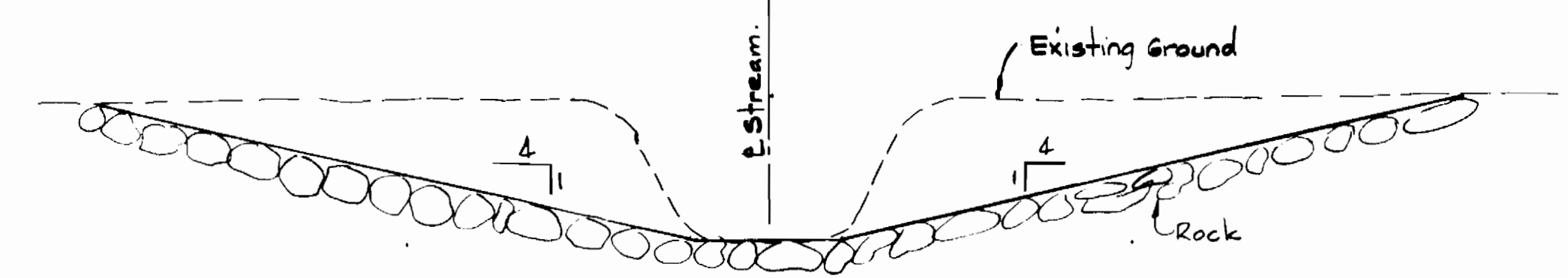
COLUMBIA
VILLAGE OF KINGS CONTRIVANCE
ELECTION DISTRICT GUILFORD NO. 6

DRAWING NO. 1 OF 6 AS SHOWN
SCALE AS SHOWN

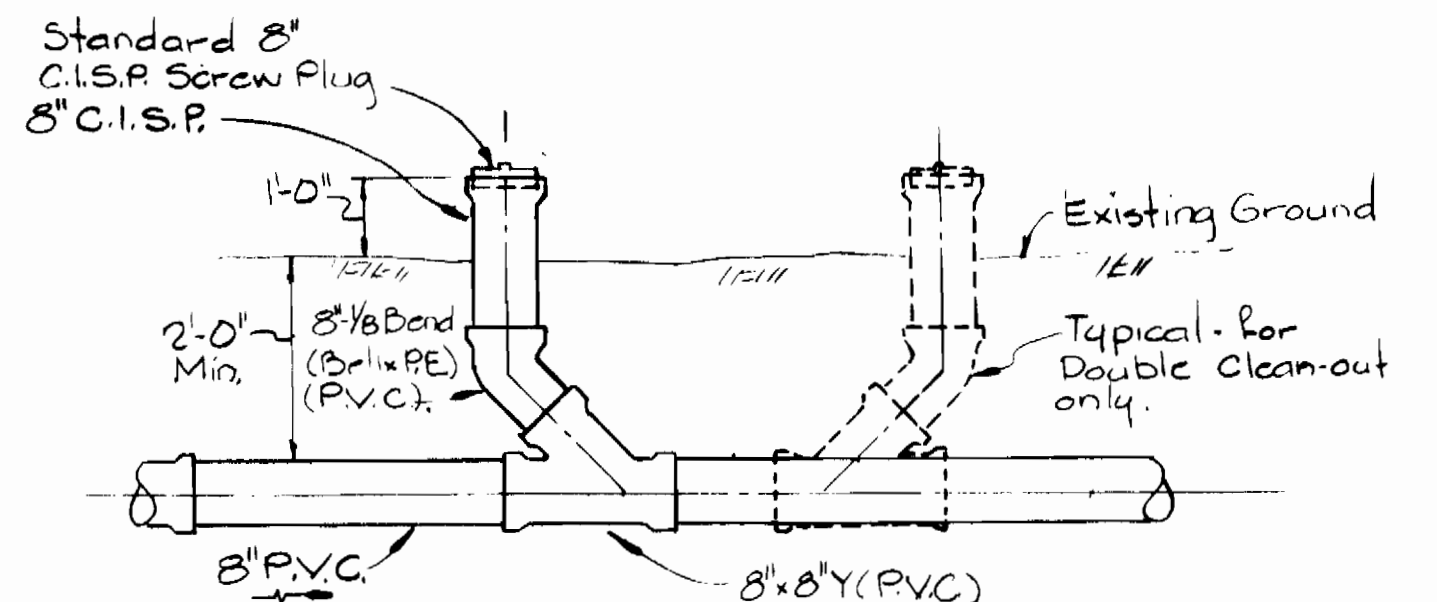


W.R.A. B.M. # 9527 Elev. 282.76
 & Top M.I. # 9527
 W.R.A. B.M. # 1 Elev. 279.50
 R.R. Spike in 15' Oak 20' Lt
 Sta. 1+05' P.I. # M.I. 142

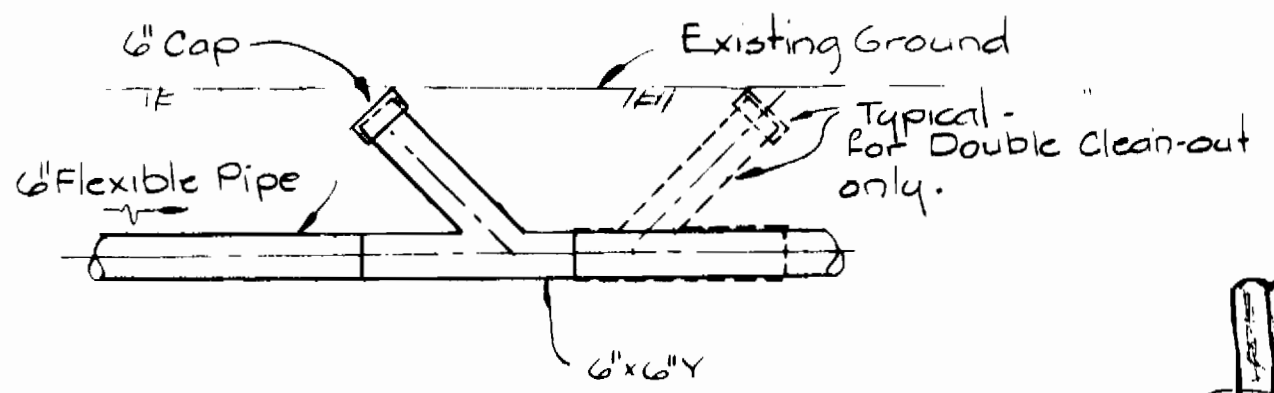
PLAN
Scale: 1" = 30'



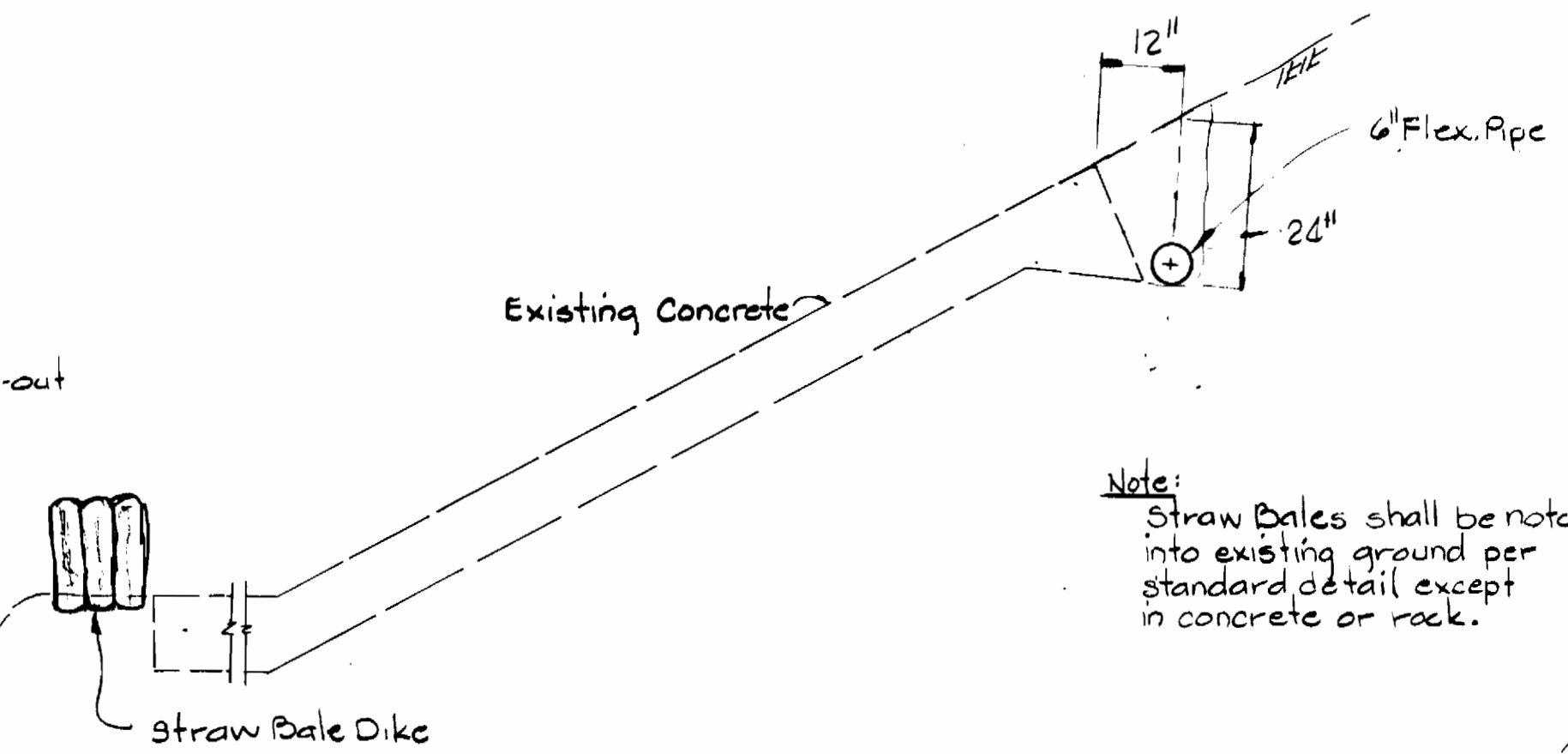
CONSTRUCTION FORD DETAIL
Scale 1/2" = 1'-0"



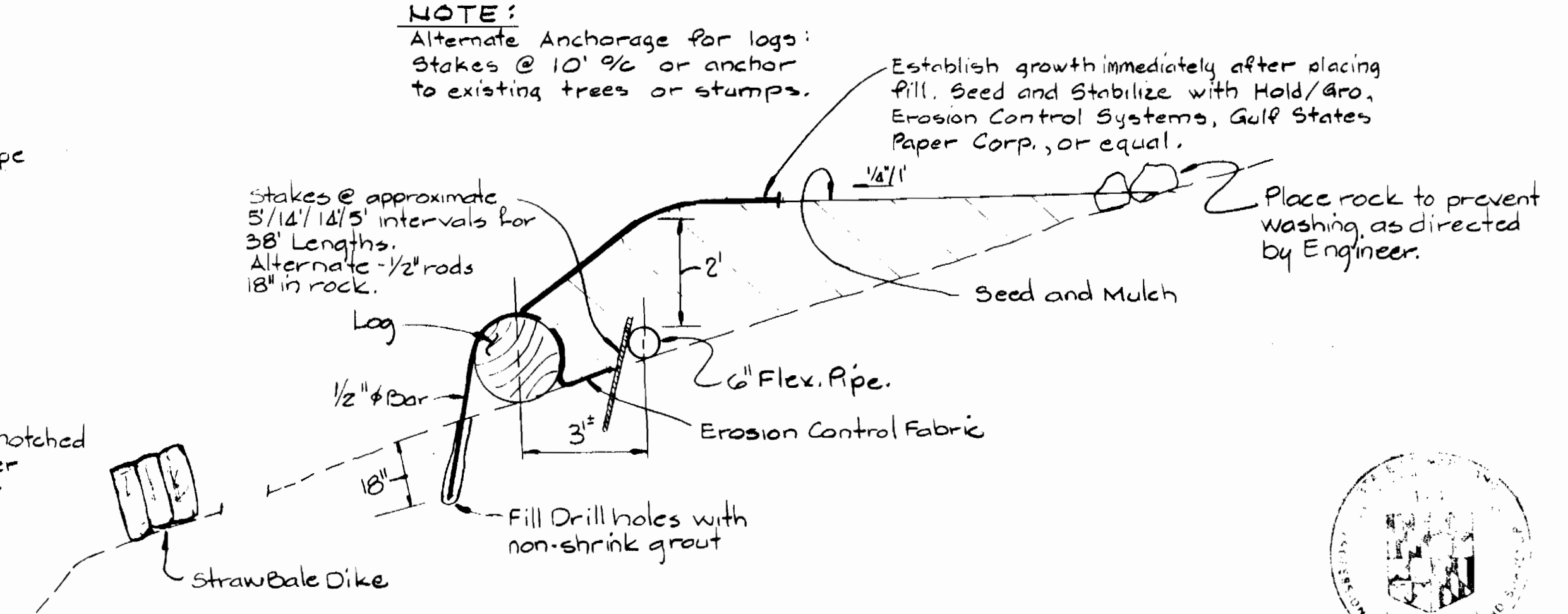
CLEAN-OUT DETAIL
Scale 1/2" = 1'-0"



CLEAN-OUT DETAIL
Scale 1/2" = 1'-0"



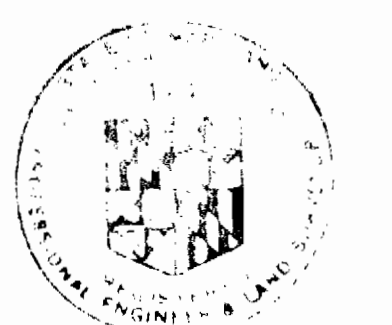
TRENCH DETAIL
STATION 13+70 TO 17+80
Scale 1/2" = 1'-0"



FILL OVER AND ANCHOR DETAIL
STATION 18+00 TO 22+00
Scale 1/2" = 1'-0"

NOTE:
Alternate Anchorage for logs:
Stakes @ 10' 9/2" or anchor
to existing trees or stumps.

Establish growth immediately after placing
Fill. Seed and Stabilize with Hold/aro,
Erosion Control Systems, Gulf States
Paper Corp., or equal.



Handwritten signature

FOR AS-BUILTS, SEE
DRAWINGS 4, 5 & 6 OF 6

Middle Patuxent
Interim Sewer
Village of Kings Contrivance
Contract No. 30-0999-D

DEPARTMENT OF PUBLIC WORKS
 HOWARD COUNTY, MARYLAND
 Director of Public Works - DATE 7-15-81
 Chief - Bureau of Engineering - DATE 7-15-81
 Chief - Bureau of Utilities - DATE 7-15-81
 Chief - Land Development Division - DATE 7-15-81

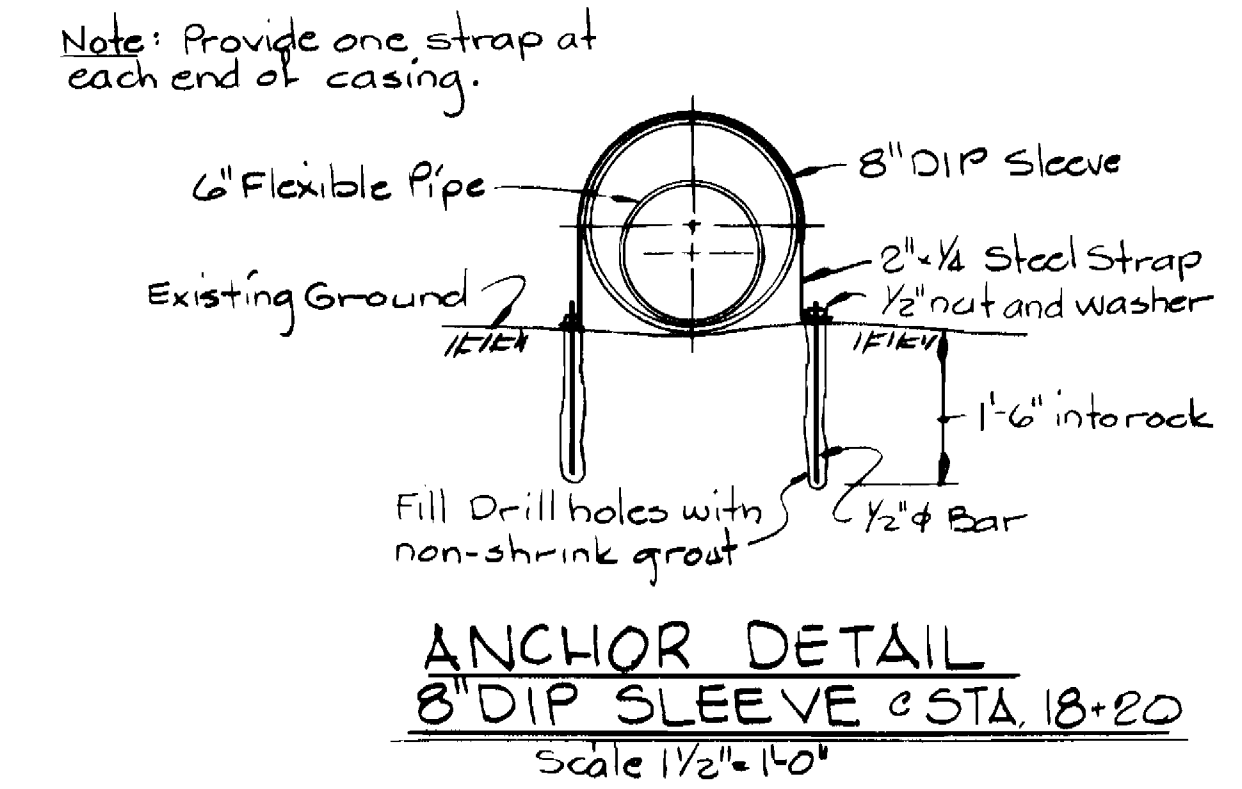
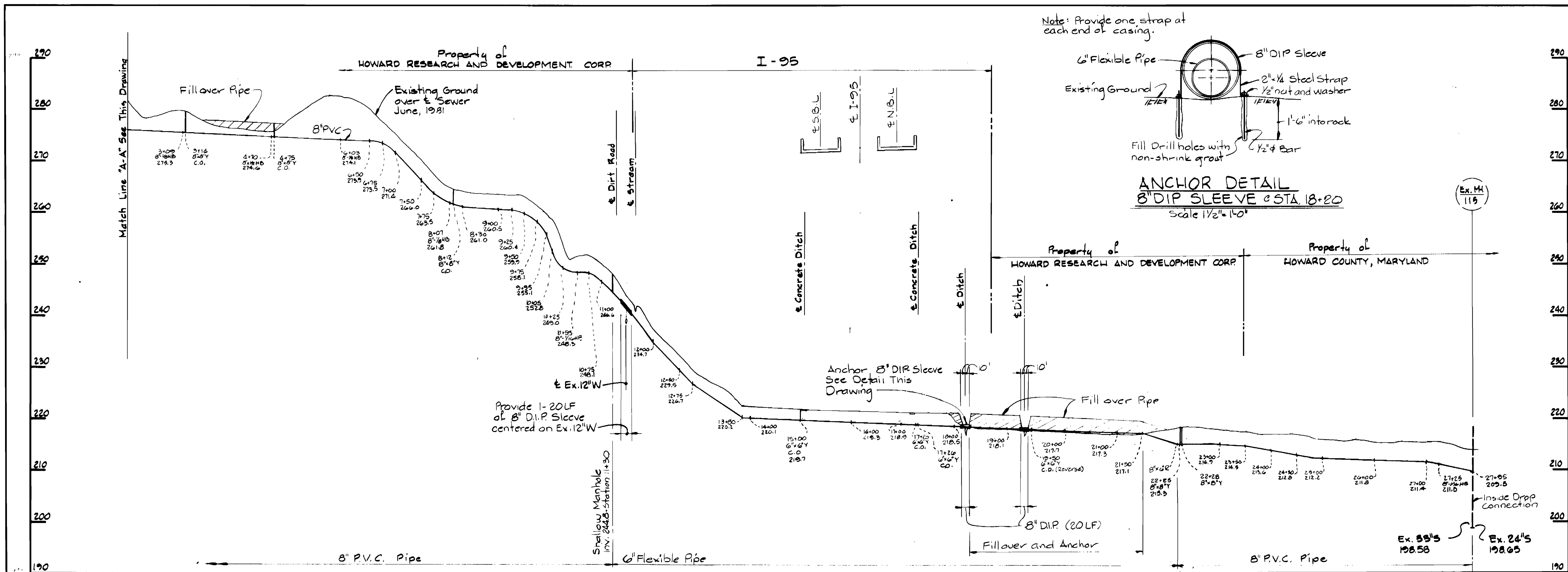
WHITMAN, REQUARDT AND ASSOCIATES
ENGINEERS
 2315 ST. PAUL ST
 BALTIMORE, MARYLAND

CONTRACT NO. 30-0999-D

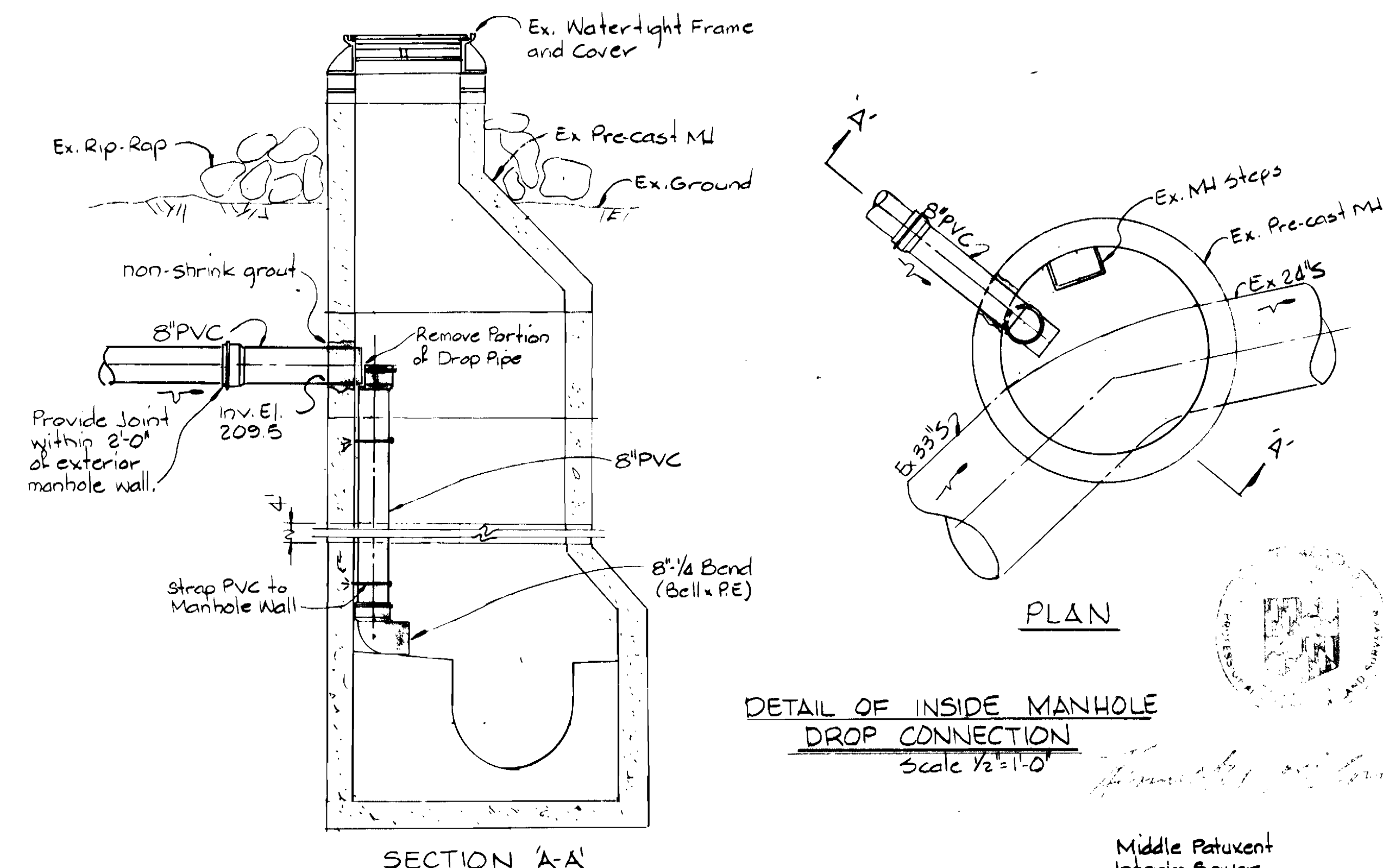
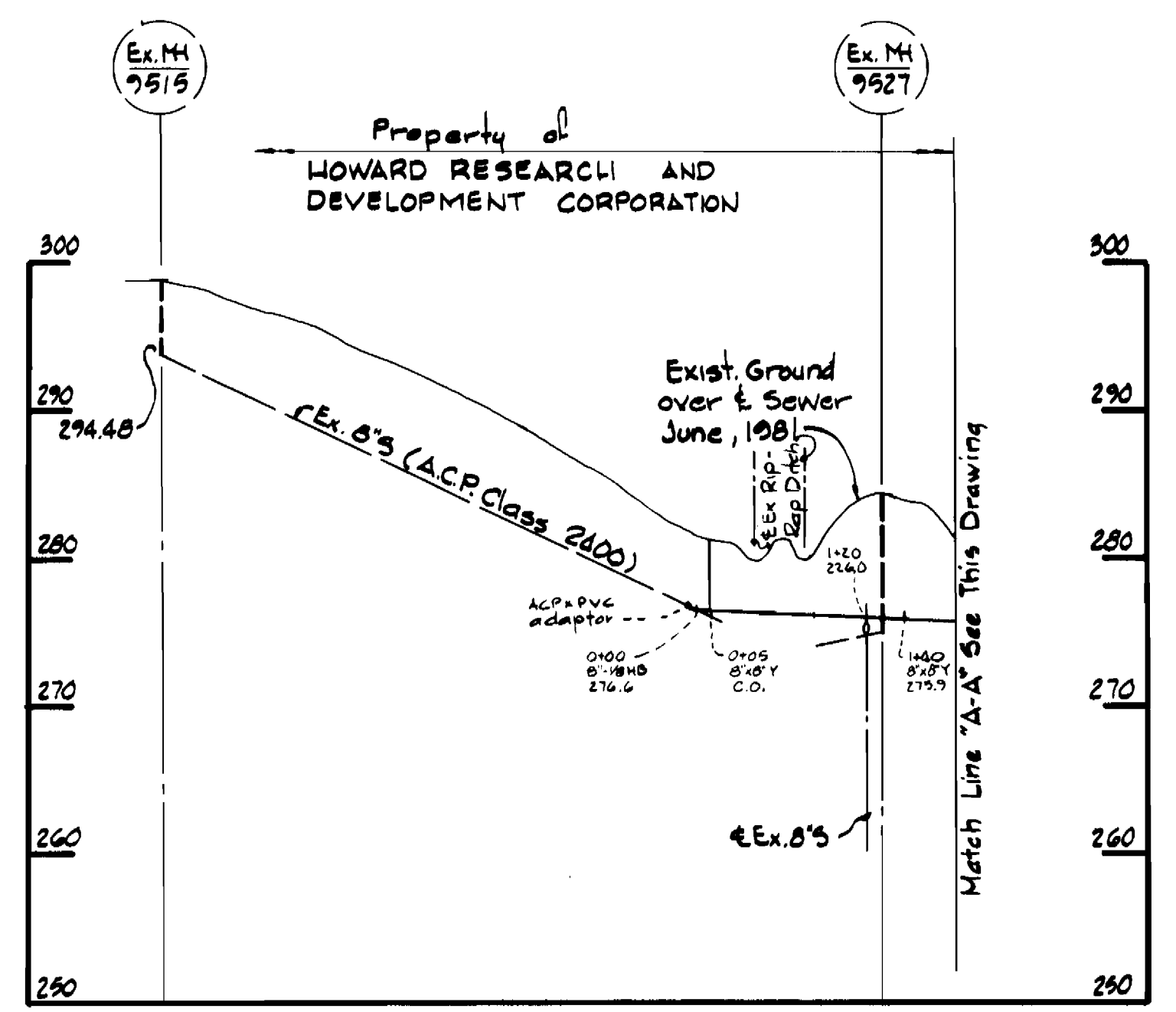
**PLAN & DETAILS OF
SEWER MAINS**

COLUMBIA
VILLAGE OF KINGS CONTRIVANCE
ELECTION DISTRICT GUILFORD NO. 6

DRAWING
NO. 2
OF 6
SCALE
AS
SHOWN



- Notes:
- Flexible Pipe shall be High Density Polyethylene, Driscopipe 7600, manufactured by Phillips Petroleum Company, Inc., Nipak P.E. Pipe, or approved equal. (Class SDR-26).
 - Mortar each end of 8" DIP Sleeve.
 - Snake 6" Flexible Pipe in trench where possible to allow for expansion.
 - Paint all exposed steel with 2 coats Mobile Asphalt 35-J-11 or approved equal.



DEPARTMENT OF PUBLIC WORKS
 HOWARD COUNTY, MARYLAND

Director of Public Works - DATE
 Chief - Bureau of Engineering - DATE
 Chief - Bureau of Utilities - DATE
 Chief - Land Development Division - DATE

WHITMAN, REQUARDT AND ASSOCIATES
 ENGINEERS
 2315 ST. PAUL ST.
 BALTIMORE, MARYLAND

CONTRACT NO. 30-0999-D

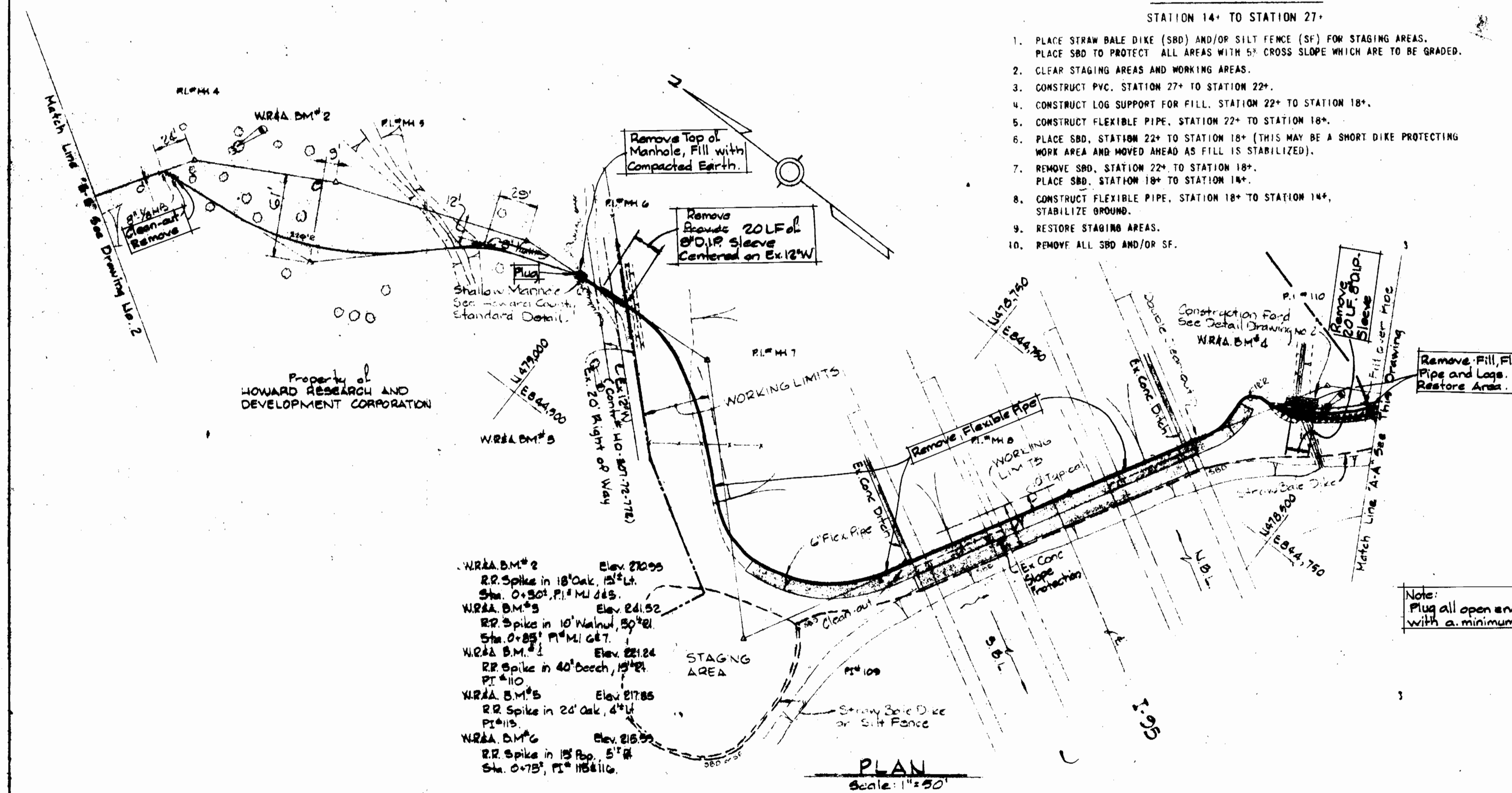
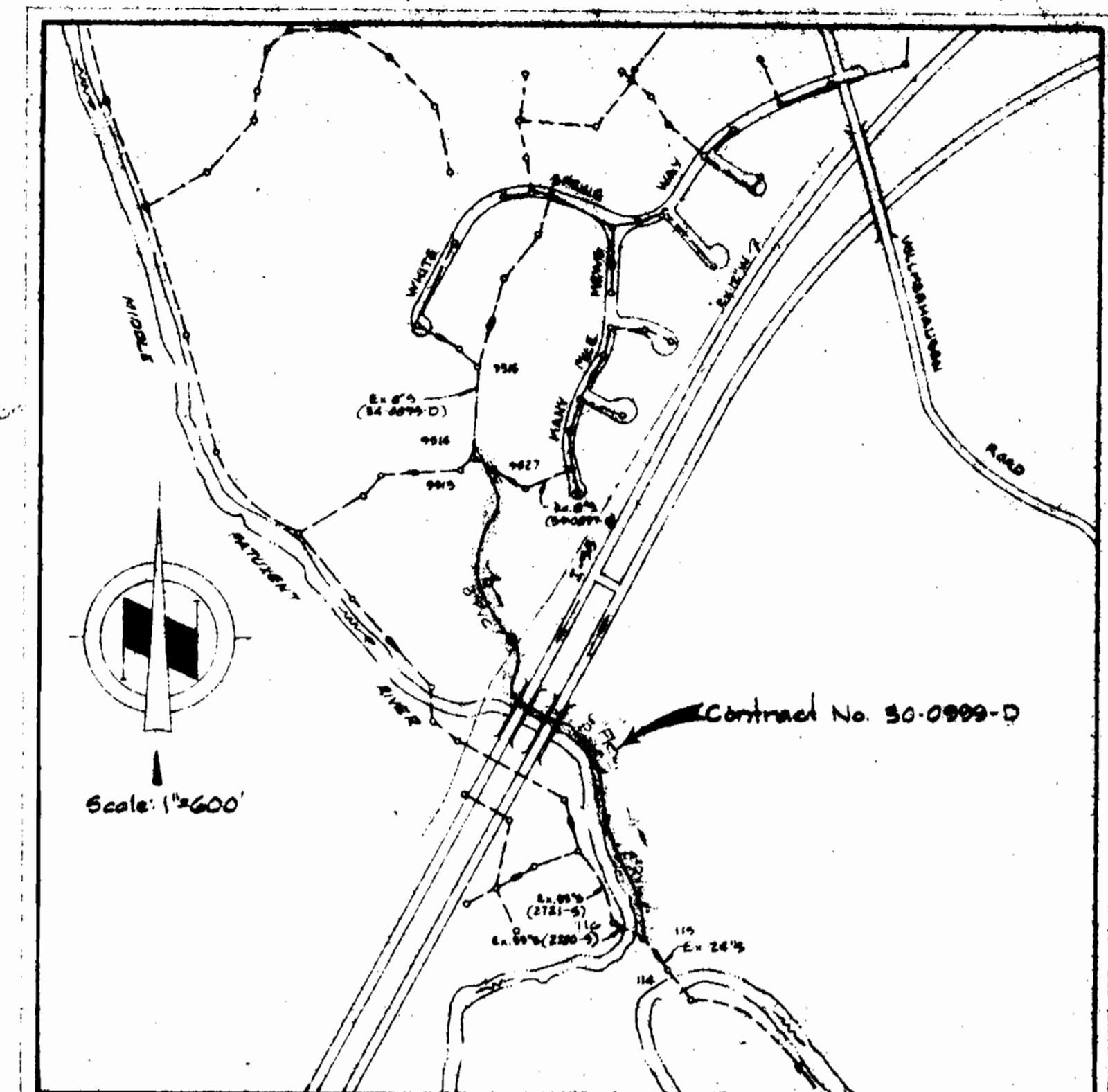
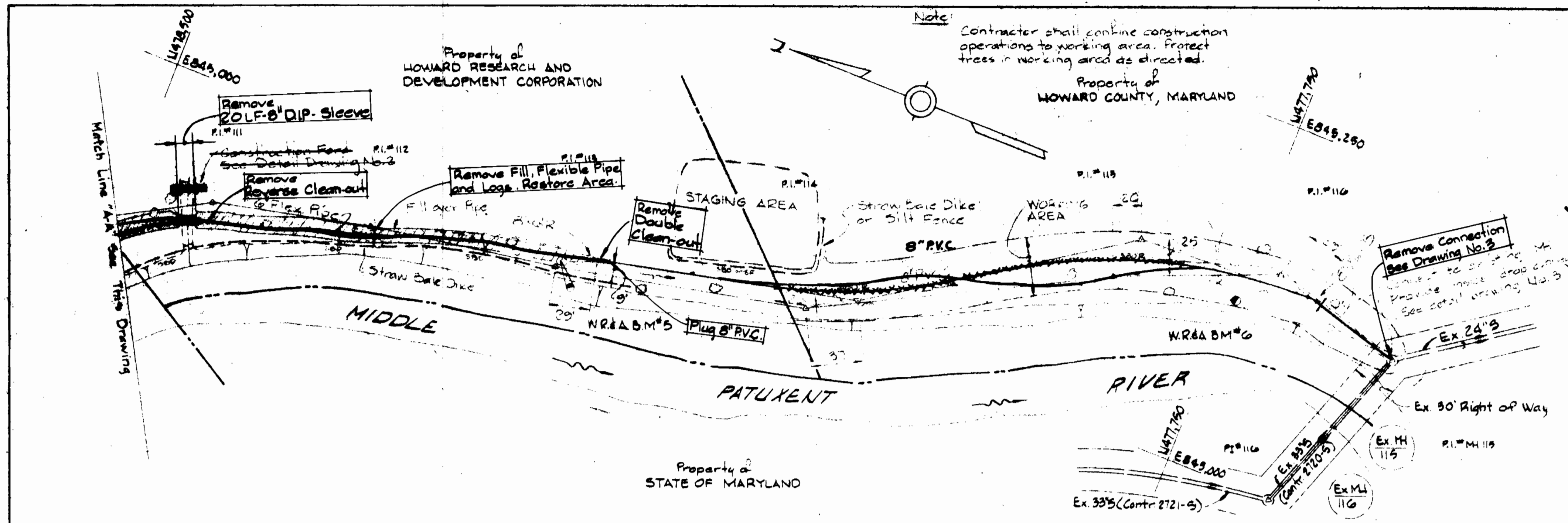
PROFILE OF
 SEWER MAINS

COLUMBIA
 VILLAGE OF KINGS CONTRIVANCE
 ELECTION DISTRICT GUILFORD NO. 6

DRAWING NO. 3 OF 6
 SCALE H=1"=100' V=1"=50'

FOR AS-BUILTS, SEE DRAWINGS 4, 5, 6 & 6

Middle Patuxent Interim Sewer Village of Kings Contrivance Contract No. 30-0999-D



- SEQUENCE OF CONSTRUCTION**
STATION 14+ TO STATION 27+
1. PLACE STRAW BALE DIKE (SBD) AND/OR SILT FENCE (SF) FOR STAGING AREAS. PLACE SBD TO PROTECT ALL AREAS WITH 5% CROSS SLOPE WHICH ARE TO BE GRADED.
 2. CLEAR STAGING AREAS AND WORKING AREAS.
 3. CONSTRUCT PVC, STATION 27+ TO STATION 22+.
 4. CONSTRUCT LOG SUPPORT FOR FILL, STATION 22+ TO STATION 18+.
 5. CONSTRUCT FLEXIBLE PIPE, STATION 22+ TO STATION 18+.
 6. PLACE SBD, STATION 22+ TO STATION 18+ (THIS MAY BE A SHORT DIKE PROTECTING WORK AREA AND MOVED AHEAD AS FILL IS STABILIZED).
 7. REMOVE SBD, STATION 22+ TO STATION 18+.
 8. CONSTRUCT FLEXIBLE PIPE, STATION 18+ TO STATION 14+.
 9. RESTORE STAGING AREAS.
 10. REMOVE ALL SBD AND/OR SF.

- GENERAL NOTES**
1. APPROXIMATE LOCATION OF EXISTING MAINS ARE SHOWN. THE CONTRACTOR SHALL TAKE ALL NECESSARY PRECAUTIONS TO PROTECT EXISTING MAINS AND SERVICES AND MAINTAIN UNINTERRUPTED SUPPLY. ANY DAMAGE INCURRED SHALL BE REPAIRED IMMEDIATELY TO THE SATISFACTION OF THE ENGINEER, AT THE CONTRACTOR'S EXPENSE.
 2. ALL PIPE ELEVATIONS SHOWN ARE INVERT ELEVATIONS.
 3. CONTRACTOR SHALL LOCATE EXISTING UTILITIES A MINIMUM OF TWO WEEKS IN ADVANCE OF CONSTRUCTION OPERATIONS IN THE VICINITY OF UTILITIES AT HIS EXPENSE.
 4. FOR DETAILS NOT SHOWN ON THE DRAWINGS, USE HOWARD COUNTY STANDARD DETAILS.
 5. FOR MATERIALS AND CONSTRUCTION REQUIREMENTS, USE HOWARD COUNTY STANDARD SPECIFICATIONS, EXCEPT AS NOTED.
 6. ALL HORIZONTAL CONTROLS ARE BASED ON MARYLAND STATE COORDINATES.
 7. ALL VERTICAL CONTROLS ARE BASED ON USGS DATUM.
 8. CONTRACTOR SHALL NOTIFY THE FOLLOWING UTILITIES OR AGENCIES AT LEAST FIVE (5) WORKING DAYS BEFORE STARTING WORK SHOWN ON THESE PLANS.
STATE HIGHWAY ADMINISTRATION - 531-5533
BALTIMORE GAS AND ELECTRIC COMPANY
UNDERGROUND ELECTRIC AND GAS DISTRIBUTION-CUSTOMER SERVICE-685-0123
DAMAGE CONTROL - 234-5621
"MISS UTILITY" - 1 - 559-0100
BUREAU OF UTILITIES HOWARD COUNTY - 992-2368
 9. TREES ARE TO BE PROTECTED FROM DAMAGE TO MAXIMUM EXTENT.
 10. CONTRACTOR SHALL REMOVE TREES, STUMPS AND ROOTS ALONG LINE OF EXCAVATION AS DIRECTED BY THE ENGINEER.
 11. ALL SEWER MAINS SHALL BE P.V.C. UNLESS OTHERWISE NOTED. CRUSHED STONE ENVELOPE (SECTION 37.06-3) IS NOT REQUIRED.

Note:
Plug all open ends of PVC pipe with a minimum 8" concrete.

AS BUILT
STAKEOUT & DIARY
IN FB. # 6593

ABANDONED OF INTERIM SEWER

Supplement to
Middle Patuxent
Interim Sewer
Village of Kings Contrivance
Contract No. 30-0999-D

EXHIBIT II

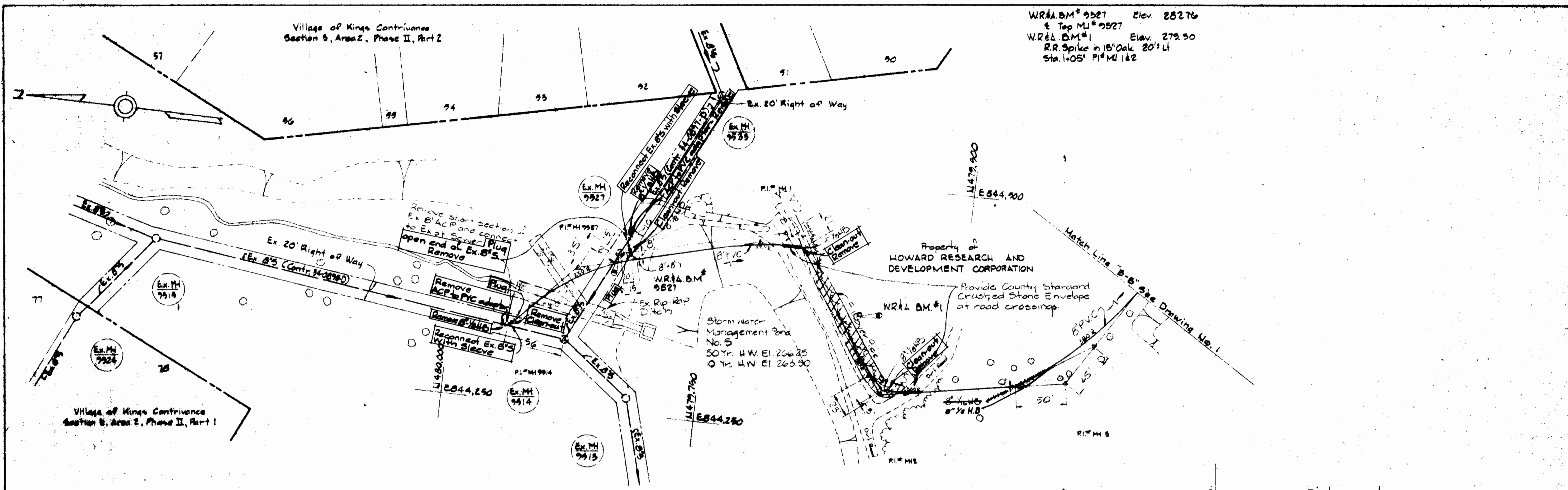
DEPARTMENT OF PUBLIC WORKS
HOWARD COUNTY, MARYLAND
J. F. NUNN, Jr. 7-23-81
DIRECTOR OF PUBLIC WORKS, DATE
R. M. ... 7-23-81
CHIEF, BUREAU OF UTILITIES, DATE

WHITMAN, REQUARDT AND ASSOCIATES
ENGINEERS
2315 ST. PAUL ST.
BALTIMORE, MARYLAND

CONTRACT NO. 30-0999-D PLAN OF SEWER MAINS

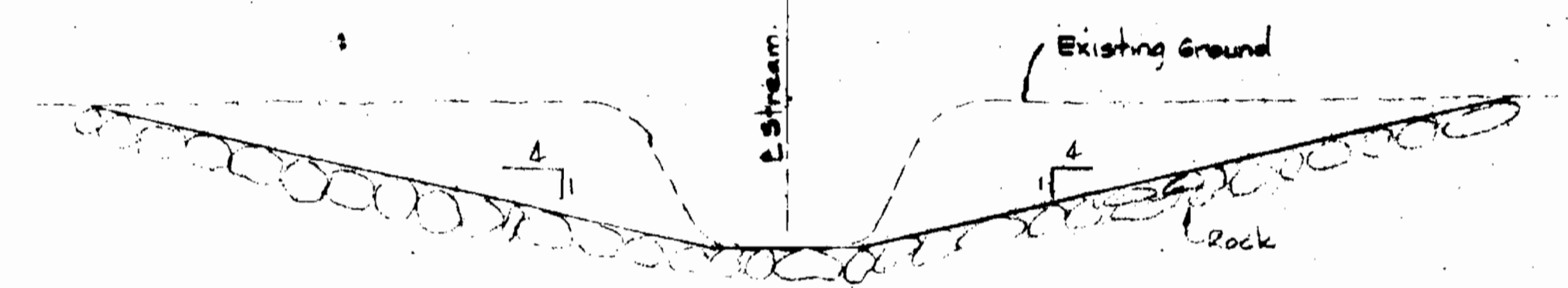
COLUMBIA
VILLAGE OF KINGS CONTRIVANCE
ELECTION DISTRICT GUILFORD NO. 6

DRAWING NO. 34 OF 36 SCALE AS SHOWN

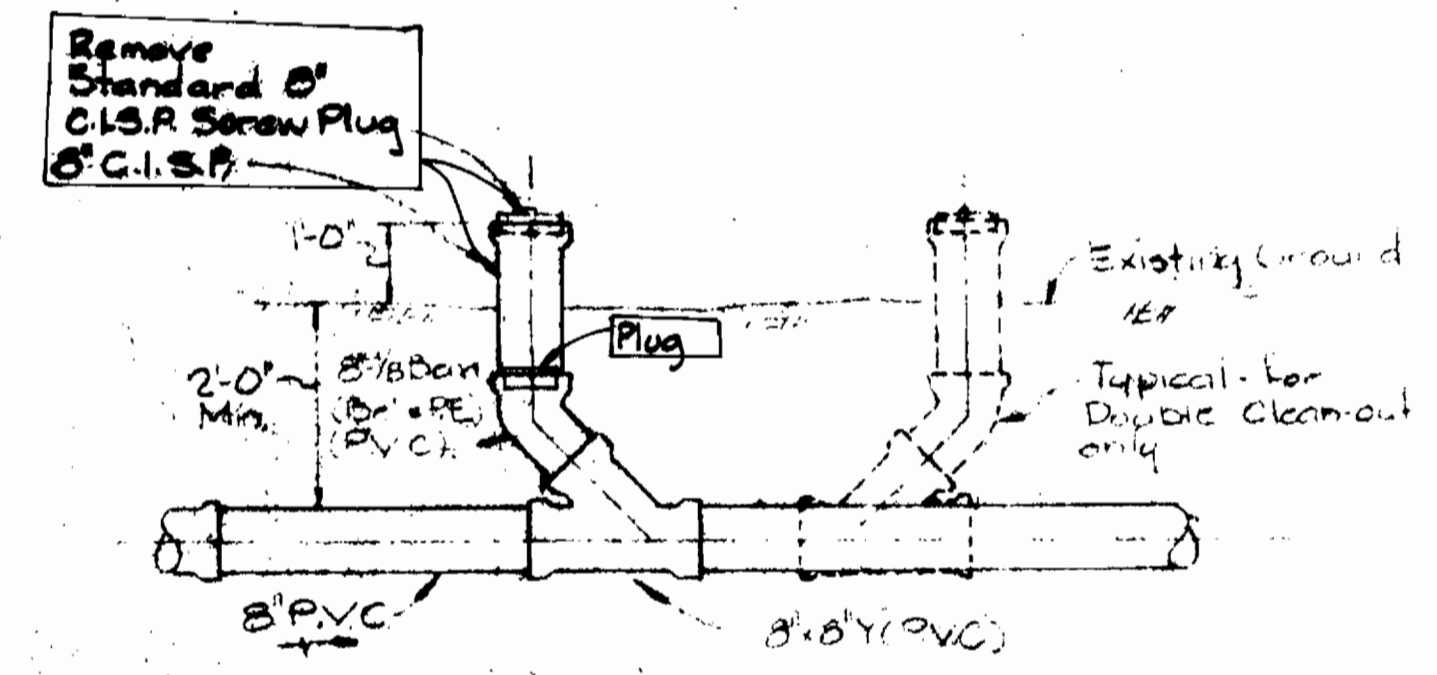


WRA BM# 9527 Elev. 282.76
 & Top M.L.# 9527
 WRA BM# 1 Elev. 279.50
 R.R. Spike in 15' Oak 20' LI
 Sta. 1405' P.I.# M 142

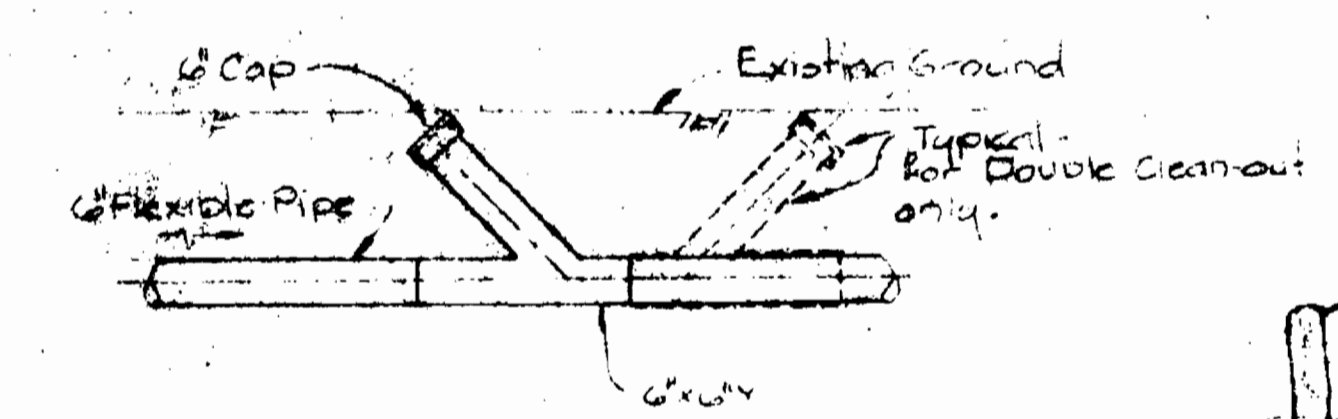
PLAN
Scale: 1"=50'



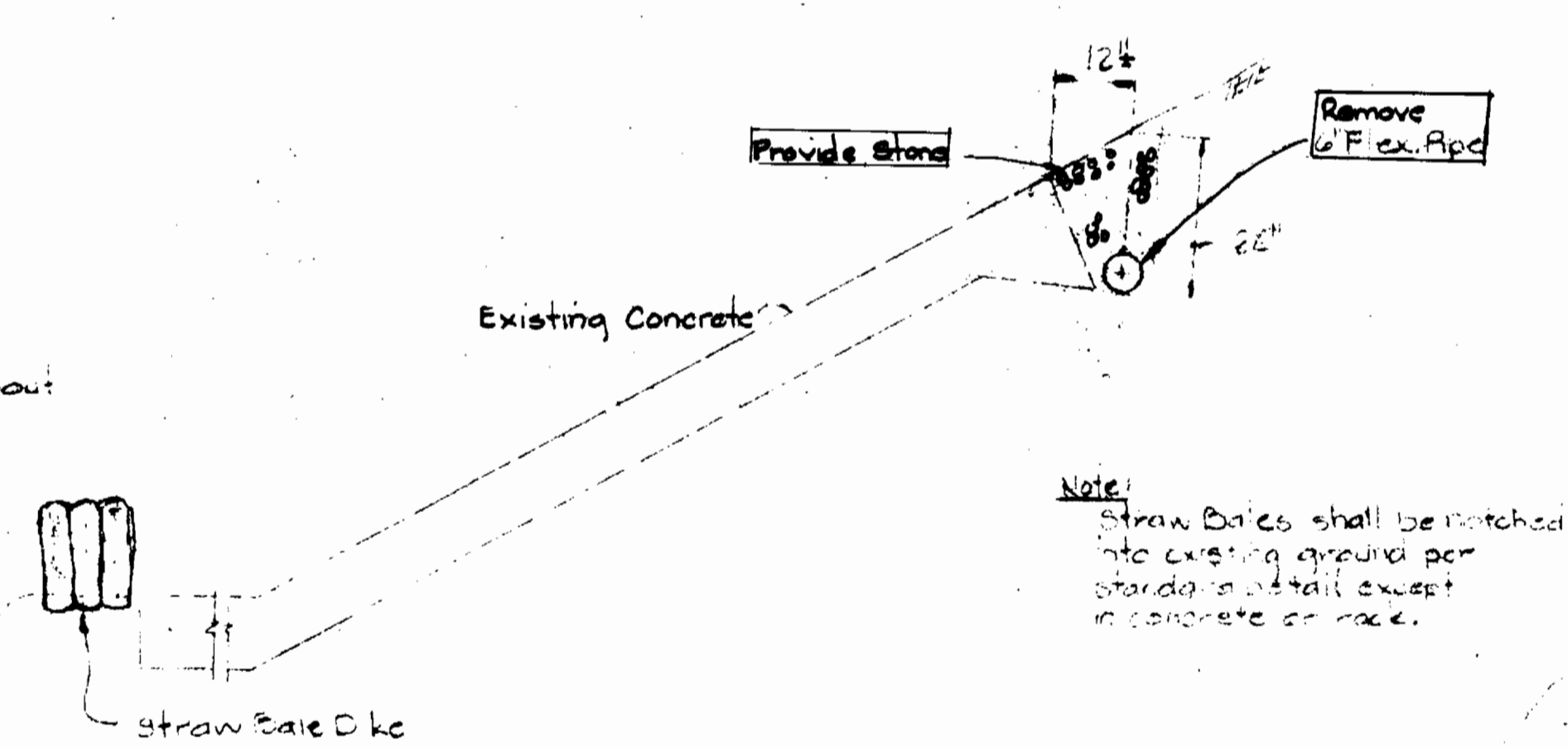
CONSTRUCTION FORD DETAIL
Scale 1/2"=1'-0"



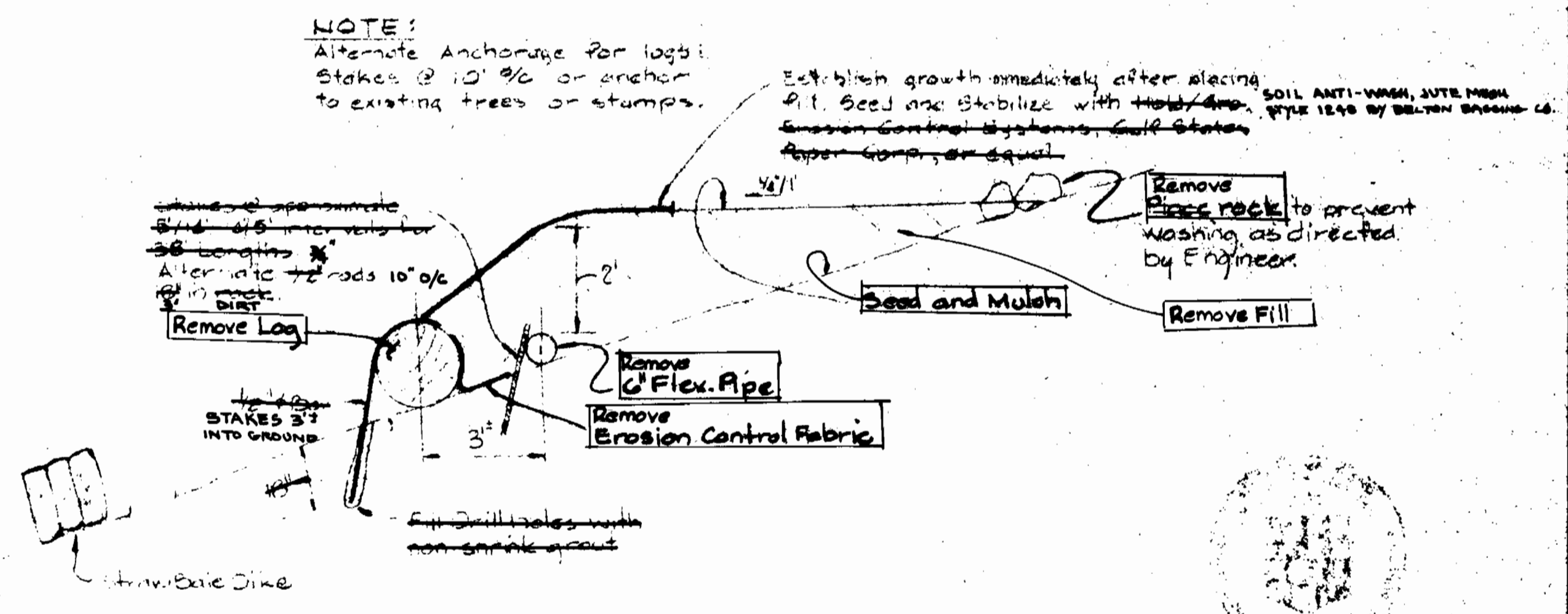
CLEAN-OUT DETAIL
Scale 1/2"=1'-0"



CLEAN-OUT DETAIL
Scale 1/2"=1'-0"



TRENCH DETAIL
STATION 15+70 TO 17+80
Scale 1/2"=1'-0"



FILL OVER AND ANCHOR DETAIL
STATION 18+00 TO 22+00
Scale 1/2"=1'-0"

NOTE:
 Alternate Anchorage for logs:
 Stakes @ 10' @ or anchor
 to existing trees or stumps.

Establish growth immediately after placing
 pit. Seed and stabilize with **SOIL ANTI-WASH, JUTE MESH**
TYPE 1540 BY DELTON ENGINEER CO.
 Erosion Control Systems, Soil Stabilizer
 Paper Company, or equal.

Remove **Flex. Pipe**
 to prevent
 washing, as directed
 by Engineer.

Supplement to
 Middle Potomac
 Interim Sewer
 Village of Kings Contrivance
 Contract No. 30-0999-D

EXHIBIT II

DEPARTMENT OF PUBLIC WORKS
 HOWARD COUNTY, MARYLAND
 Director of Public Works - DATE: 7/23/81
 Chief - Bureau of Engineering - DATE: 7/23/81
 Chief - Bureau of Utilities - DATE: 7/23/81
 Chief - Land Development Division - DATE: 7/23/81

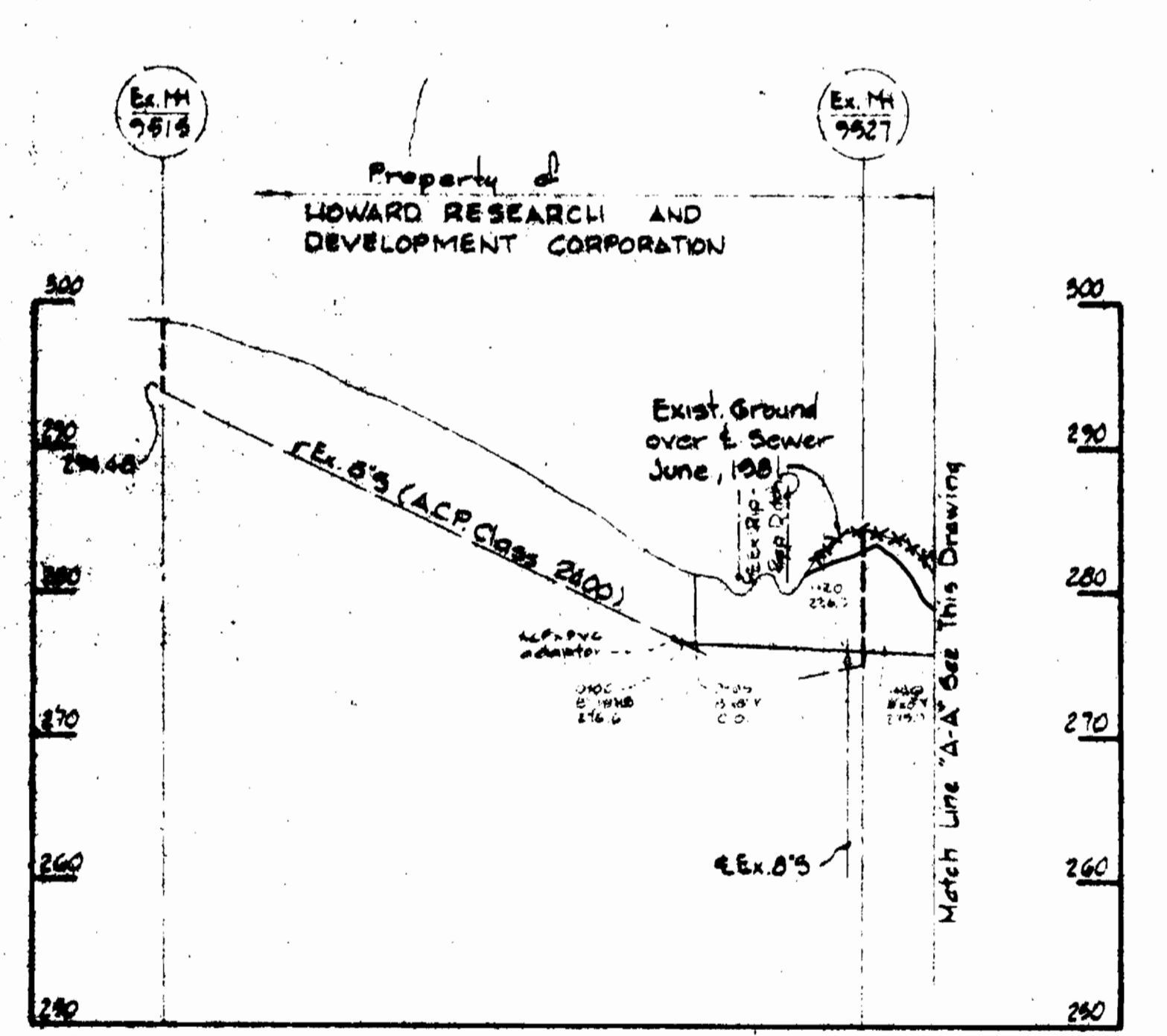
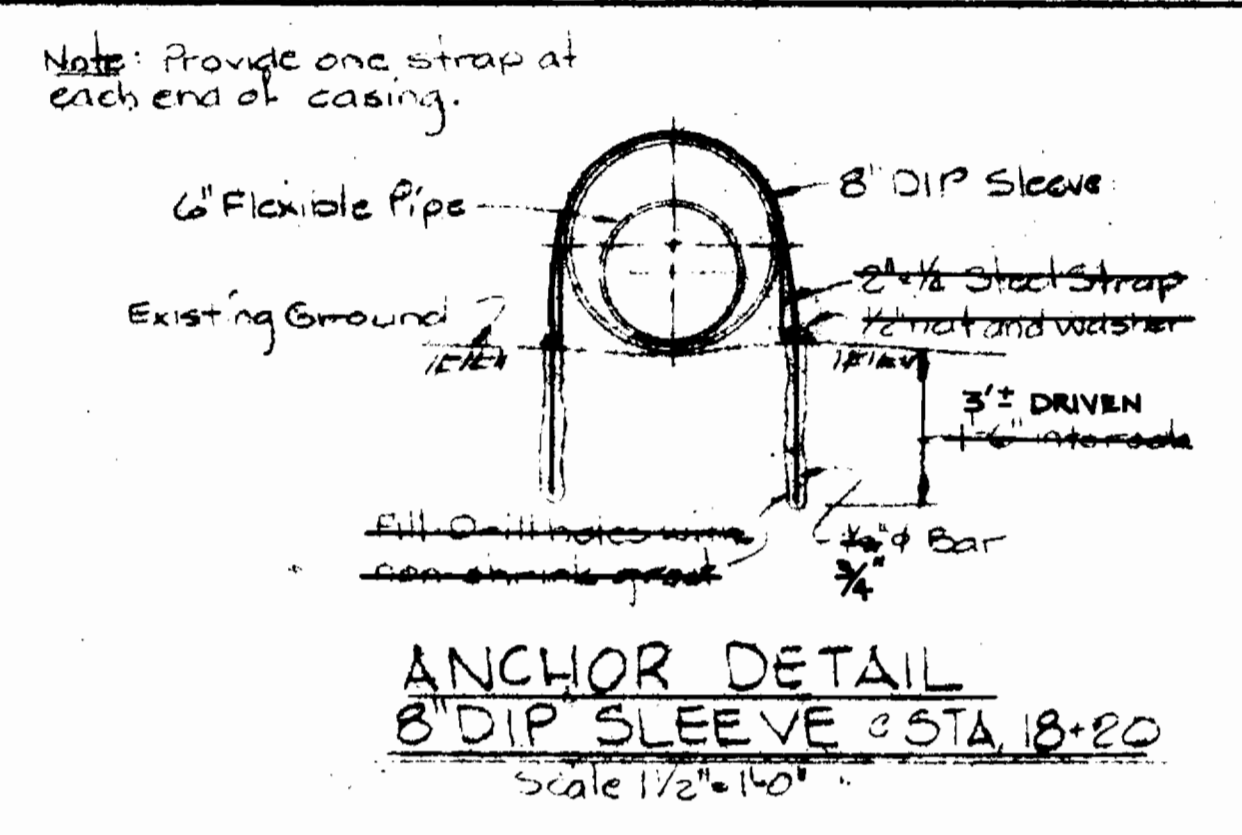
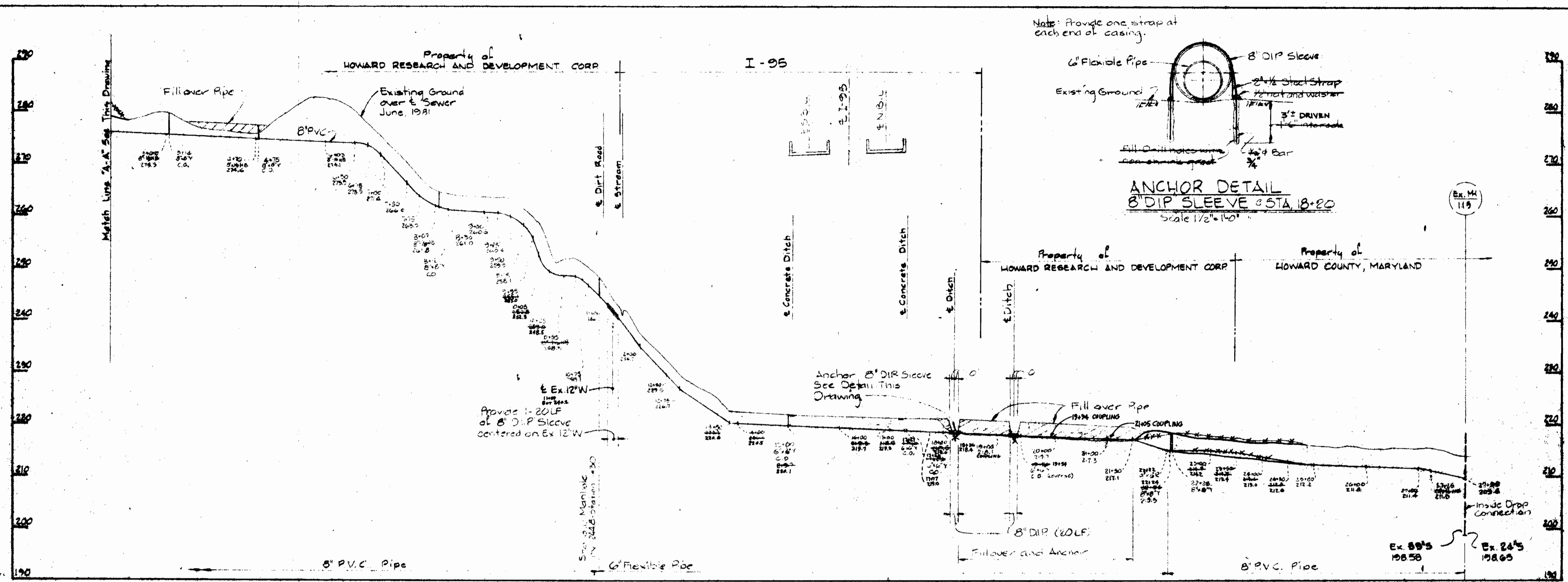
WHITMAN, REQUARDT AND ASSOCIATES
ENGINEERS
 2315 ST. PAUL ST.
 BALTIMORE, MARYLAND

CONTRACT NO. 30-0999-D

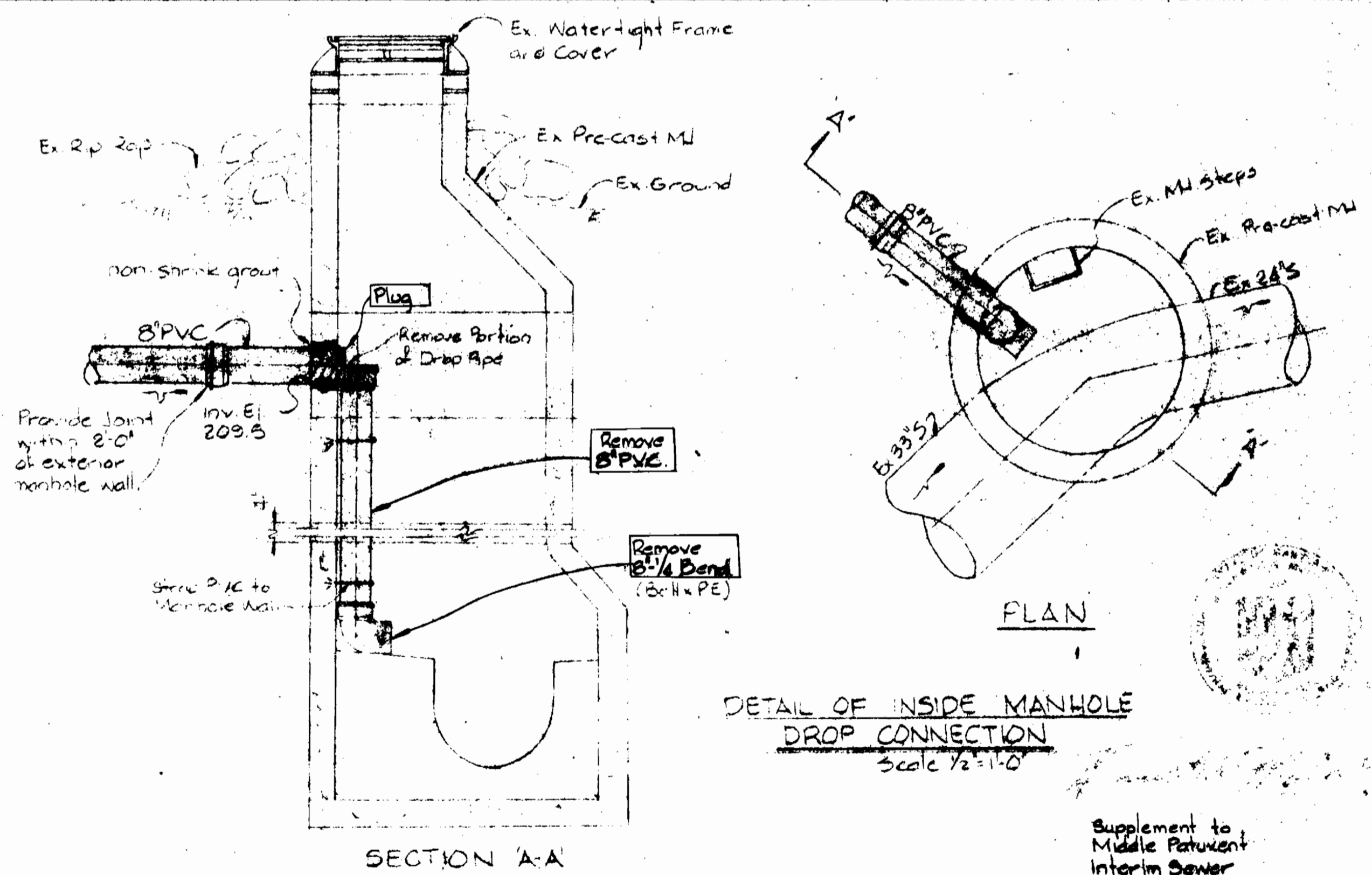
PLAN & DETAILS OF
SEWER MAINS

COLUMBIA
VILLAGE OF KINGS CONTRIVANCE
ELECTION DISTRICT GUILFORD NO. 6

DRAWING NO. 25
OF 26
SCALE AS SHOWN



- Notes:
- Flexible Pipe shall be High Density Polyethylene (HDPE) or equivalent.
 - Material each end of 8" DIP Sleeve.
 - Snake 6" Flexible Pipe in trench where possible to allow for expansion.
 - Paint all exposed steel with 2 coats Mobile Asphalt or approved equal.



DEPARTMENT OF PUBLIC WORKS HOWARD COUNTY, MARYLAND Director of Public Works: <i>John F. Nunn</i> Chief, Bureau of Engineering: <i>Richard A. ...</i> Chief, Bureau of Utilities: <i>...</i>	WHITMAN, REQUARDT AND ASSOCIATES ENGINEERS 2315 ST. PAUL ST. BALTIMORE, MARYLAND	CONTRACT NO. 30-0999-D	PROFILE OF SEWER MAINS	COLUMBIA VILLAGE OF KINGS CONTRIVANCE ELECTION DISTRICT, GUILFORD NO. 6	DRAWING NO. <i>16</i>	SCALE <i>1" = 100'</i>
					OF <i>16</i>	<i>1" = 50'</i>