

SEDIMENT CONTROL NOTES

1. FOR SEDIMENT CONTROL FOR THIS CONTRACT SEE THE APPROVED ROAD CONSTR. PLANS FOR FILE F-80-96.
2. MATERIAL FROM TRENCH EXCAVATION TO BE PLACED ON UPHILL SIDE OF TRENCH.
3. CONTRACTOR TO BACKFILL, COMPACT AND STABILIZE IMMEDIATELY AFTER INSTALLATION OF PIPE. NO TRENCHES WILL BE LEFT OPEN AT THE END OF EACH DAY, EXCEPT THAT PORTION WHERE WORK HAS STOPPED.
4. ANY SEDIMENT CONTROL FACILITIES ENCOUNTERED DURING PIPE CONSTRUCTION TO BE RETURNED TO ORIGINAL CONDITION IMMEDIATELY UPON COMPLETION OF THAT PORTION OF THE WORK.

VILLAGE OF KINGS CONTRIVANCE

SECTION 2, AREA 3, PHASE III, PART 2

CONTRACT NO. 34-0985-D

DEPARTMENT OF PUBLIC WORKS HOWARD COUNTY, MARYLAND

GENERAL NOTES

1. APPROXIMATE LOCATION OF EXISTING MAINS ARE SHOWN. THE CONTRACTOR SHALL TAKE ALL NECESSARY PRECAUTIONS TO PROTECT EXISTING SERVICES AND MAINTAIN UNINTERRUPTED SUPPLY. ANY DAMAGE INCURRED SHALL BE REPAIRED IMMEDIATELY.
2. ALL PIPE ELEVATIONS SHOWN ARE INVERT ELEVATIONS.
3. ALL WATER MAINS TO BE C.I.P. OR D.I.P. UNLESS OTHERWISE NOTED.
4. THE CONTRACTOR SHALL LOCATE EXISTING UTILITIES A MINIMUM OF TWO WEEKS IN ADVANCE OF CONSTRUCTION OPERATIONS IN VICINITY OF UTILITIES.
5. ALL WATER HOUSE CONNECTIONS SHALL BE FOR INSIDE METER SETTING.
6. FOR DETAILS NOT SHOWN ON THE DRAWINGS USE HOWARD COUNTY STANDARDS DETAILS.
7. THE CONTRACTOR SHALL PROVIDE A JOINT IN ALL SEWER MAINS WITHIN 2'-0" OF EXTERIOR MANHOLE WALLS.
8. FOR MATERIALS AND CONSTRUCTION METHODS USE HOWARD COUNTY STANDARD SPECIFICATIONS.
9. ALL HORIZONTAL AND VERTICAL CONTROLS ARE BASED ON MARYLAND STATE DATUM.
10. PLACE REGULATION "MEN WORKING" AND WARNING SIGN AS REQUIRED TO COMPLY WITH MARYLAND STATE HIGHWAY ADMINISTRATION MANUAL OF TRAFFIC CONTROL FOR HIGHWAY CONSTRUCTION AND MAINTENANCE OPERATIONS.
11. ALL WATER MAINS TO HAVE A MINIMUM OF 3 1/2' COVER UNLESS OTHERWISE NOTED.
12. TREES ARE TO BE PROTECTED FROM DAMAGE TO MAXIMUM EXTENT. TREES LOCATED WITHIN THE CONSTRUCTION STRIP ARE NOT TO BE REMOVED OR DAMAGED BY THE CONTRACTOR.
13. CLEAR ALL UTILITIES BY A MINIMUM OF 12 INCHES.
14. ALL FIRE HYDRANTS SHALL BE STRAPPED TO TEES AND SHALL BE BUTTRESSED WITH CONCRETE IN ACCORDANCE WITH STANDARD DETAILS.
15. CONTRACTOR SHALL REMOVE TREES, STUMPS, AND ROOTS ALONG LINE OF EXCAVATION AS DIRECTED BY THE ENGINEER.
16. WHERE SEWER DEPTH EXCEEDS 12 FEET, USE CLASS 3900 A.C.P.
17. ALL SEWERS SHALL BE V.C.P.X., C.S.P.X., PVC OR A.C.P., CLASS 2400 UNLESS OTHERWISE NOTED.
18. ALL MANHOLES SHALL BE 4'-0" INSIDE DIAMETER UNLESS OTHERWISE NOTED.
19. PROFILE STATIONS SHALL BE ADJUSTED AS NECESSARY TO CONFORM TO PLAN DIMENSIONS.
20. BLOCK ALL FITTINGS WITH CONCRETE. SEE STANDARDS BOUND IN SPECIFICATIONS.
21. BURY LINE ELEVATIONS ON FIRE HYDRANTS SHALL BE SET TO THE ELEVATIONS SHOWN ON DRAWINGS.
22. ALL TWF TWIN WATER HOUSE CONNECTIONS SHALL BE 1-INCH SIZE, SINGLE WATER HOUSE CONNECTIONS SHALL BE 3/4" COPPER PIPE.
23. CONTRACTOR SHOULD NOTIFY THE FOLLOWING UTILITIES OR AGENCIES AT LEAST FIVE (5) DAYS BEFORE STARTING WORK SHOWN ON THESE PLANS:
 CHESAPEAKE AND POTOMAC TELEPHONE CO. 725-9976
 BALTIMORE GAS AND ELECTRIC CO.
 -UNDERGROUND ELECTRIC DISTRIBUTION ENGR., 234-5691
 -DAMAGE CONTROL 559-0100
 -UNDERGROUND GAS DISTRIBUTION ENGR. 393-3649
 BELL TELEPHONE SYSTEM 393-3649
 LONG DISTANCE CABLE DIVISION 393-3553
 BUREAU OF UTILITIES 992-2366
 SEDIMENT CONTROL MEASURES FOR THIS CONTRACT WILL BE IMPLEMENTED IN ACCORDANCE WITH SECTION 14 OF THE SPECIFICATIONS AND ROAD CONSTRUCTION PLAN F-81-89

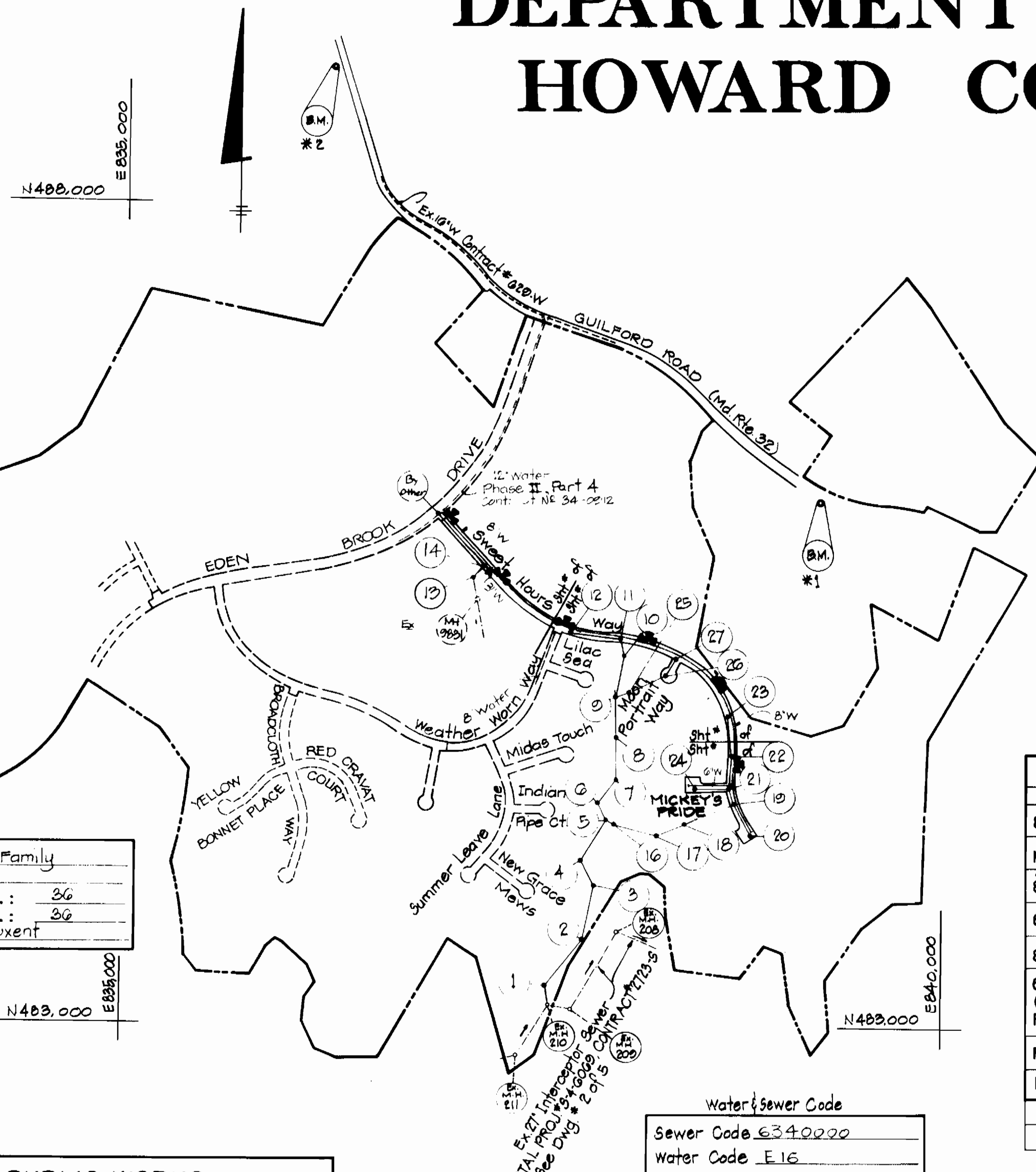
NOTES (Continued)

24. THE TOP ELEVATION OF ALL OUTFALL MANHOLES SHOULD BE SET A MINIMUM OF 18" ABOVE EXISTING GROUND AS SHOWN ON STANDARD DETAIL S-1.58.
25. ALL PVC PIPE IS TO BE INSTALLED IN ACCORDANCE WITH MANUFACTURER'S AND HOWARD COUNTY SPECIFICATIONS.
26. WATERMAIN AND WATERHOUSE CONNECTIONS MUST HAVE AT LEAST ONE FOOT SEPARATION FROM THE SEWER MAIN AND SEWER HOUSE CONNECTION AS THEY PASS ABOVE IT.

- *1 BENCH MARK
 B.M. #2240001 Elev. 329.607
 Description
 Concrete Monument 10" x 6" x 6"
 S. Edge Rd. N 48° 00' 00" E 83° 08' 11" 306
- *2 BENCH MARK
 B.M. #2340002-R Elev. 302.011
 Description
 R.B. 15' x 15' W. of W. Edge Rd.
 7' Below Surface N 48° 00' 00" E 83° 08' 02" 302

QUANTITIES				
ITEM	UNIT	ESTIMATED	AS-BUILT	MATERIAL/SUPPLIER
8" SEWER	L.F.	5,951	3,935	P.V.C. (E.T.I.)
MANHOLE	NO.	26	21	ATLANTIC
8" DIP SEWER	L.F.	577	577	DIP
8" WATER	L.F.	3,074	2,742	GRIFFIN
6" WATER	L.F.	520	795	GRIFFIN
8" VALVE	NO.	3	3	USP
6" VALVE (Excluding F.H. Valves)	NO.	4	3	USP
FIRE HYDRANT	NO.	6	6	USP
10" SEWER	L.F.	131	131	P.V.C. E.T.I.
8" S.I. VALVE	NO.	3	3	
ES-PACER	Ea.	1	3	

TYPE OF BUILDING: Single Family
 NO. OF LOTS: 26
 NUMBER OF WATERHOUSE CONN.: 26
 NUMBER OF SEWERHOUSE CONN.: 26
 DRAINAGE AREA: Middle Patuxent



Water & Sewer Code
 Sewer Code E340220
 Water Code E16

PLAN
 Scale: 1"=60'

REVIEWED FOR HOWARD SOIL CONSERVATION DISTRICT AND MEETS TECHNICAL REQUIREMENT.
 Signature: [Signature]
 U.S. SOIL CONSERVATION SERVICE
 Date: 10-14-81

THIS DEVELOPMENT PLAN IS APPROVED FOR SOIL EROSION AND SEDIMENT CONTROL BY THE HOWARD COUNTY CONSERVATION DISTRICT.
 APPROVED: [Signature]
 HOWARD S.D.D.
 Date: 10-14-81

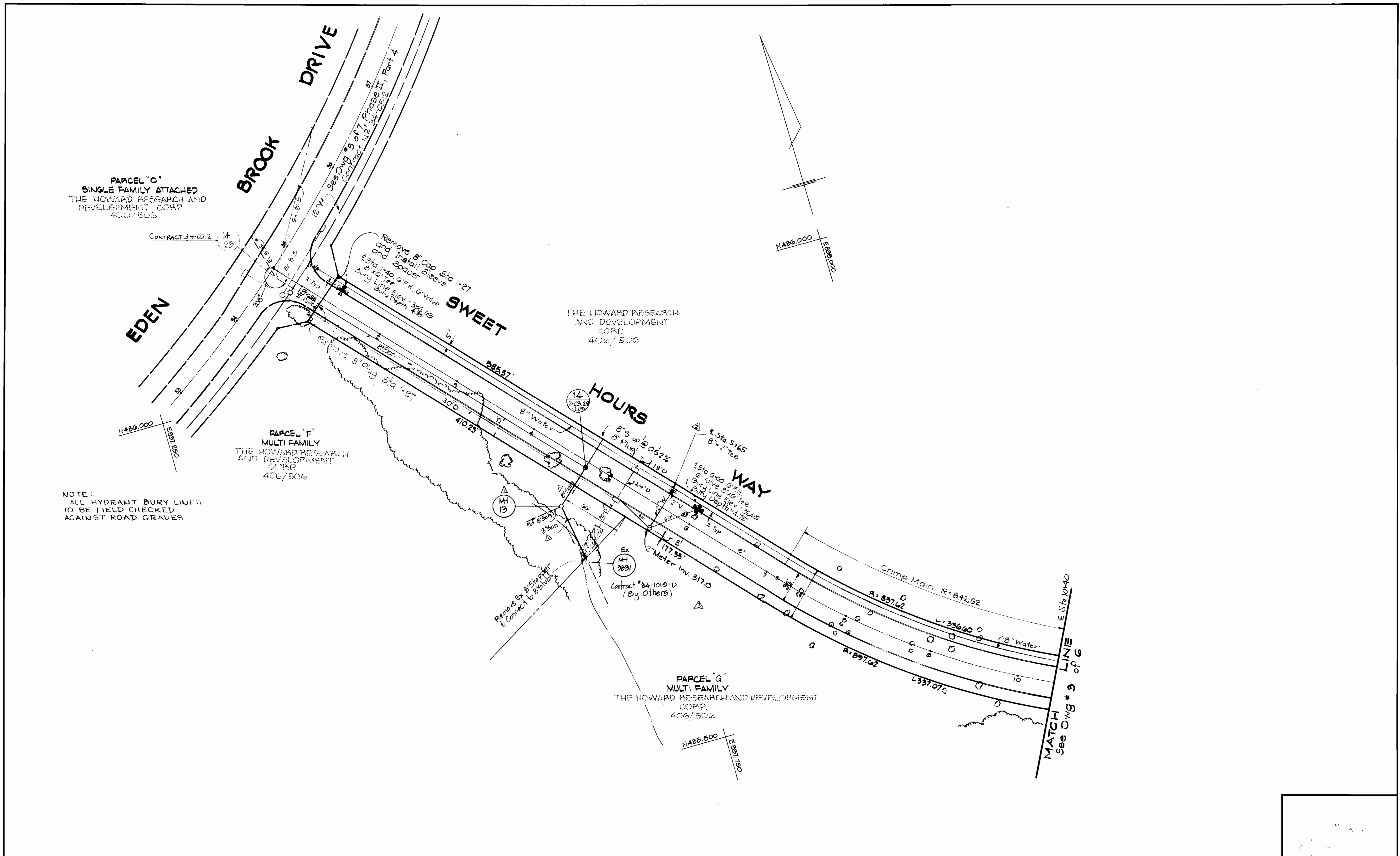
DEPARTMENT OF PUBLIC WORKS
 HOWARD COUNTY, MARYLAND
 Robert M. Reingers 10-30-81
 CHIEF BUREAU OF UTILITIES DATE CHIEF LAND DEVELOPMENT DIVISION DATE

DEPARTMENT OF PUBLIC WORKS
 HOWARD COUNTY, MARYLAND
 James H. Linn 11/6/81
 DIRECTOR OF PUBLIC WORKS DATE
 [Signature] 11/2/81
 CHIEF BUREAU OF ENGINEERING DATE

CONTRACT NO. 34-0985-D
 TITLE SHEET

VILLAGE OF KINGS CONTRIVANCE
 SECTION 2, AREA 3, PHASE III, PART 2
 6TH ELECTION DISTRICT, HOWARD COUNTY, MARYLAND

DRAWING NO. 1 OF 6
 SCALE As Shown



PARCEL "C"
SINGLE FAMILY ATTACHED
THE HOWARD RESEARCH AND
DEVELOPMENT CORP.
406/506

PARCEL "F"
MULTI FAMILY
THE HOWARD RESEARCH AND
DEVELOPMENT CORP.
406/506

THE HOWARD RESEARCH
AND DEVELOPMENT
CORP.
406/506

PARCEL "G"
MULTI FAMILY
THE HOWARD RESEARCH AND DEVELOPMENT
CORP.
406/506

NOTE:
ALL HYDRANT BURY LINES
TO BE FIELD CHECKED
AGAINST ROAD GRADES

DEPARTMENT OF PUBLIC WORKS
HOWARD COUNTY, MARYLAND
12-30-81
CHIEF BUREAU OF UTILITIES, DATE CHIEF LAND DEVELOPMENT DIVISION, DATE

CENTURY ENGINEERING, INC.
CONSULTING ENGINEERS - PLANNERS
TOWSON, MARYLAND 21204

DEPARTMENT OF PUBLIC WORKS
HOWARD COUNTY, MARYLAND
11/13/81
DIRECTOR OF PUBLIC WORKS DATE CHIEF BUREAU OF ENGINEERING DATE

CONTRACT NO. 34-0985-D

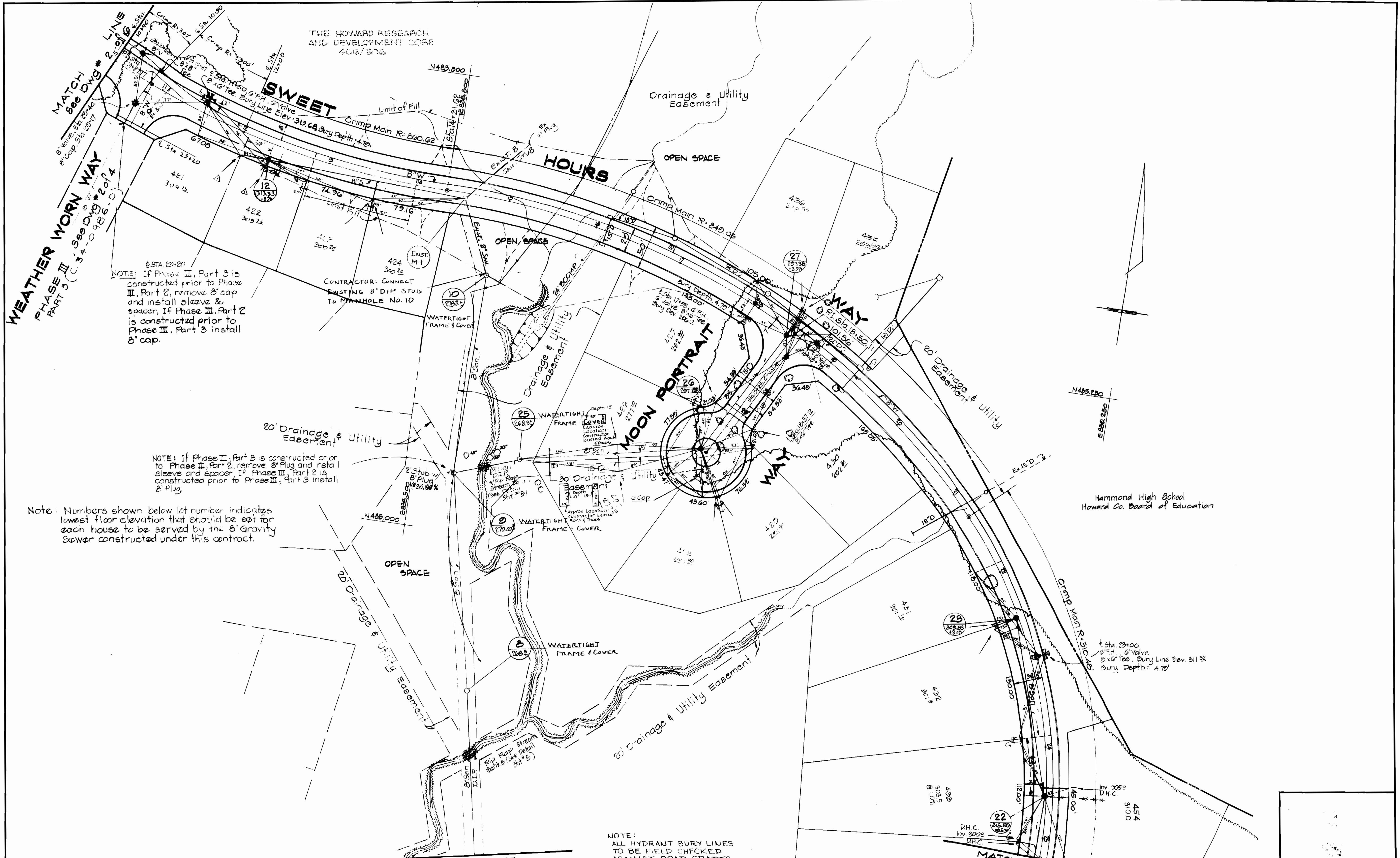
PLAN OF
WATER AND SEWER MAINS

VILLAGE OF KINGS CONTRIVANCE
SECTION 2, AREA 3, PHASE III, PART 2
6TH ELECTION DISTRICT, HOWARD COUNTY, MARYLAND

DRAWING
NO. 2
OF 6

SCALE
1"=50'

9/14/84	Changed W.H.C. and Water Meter from 2" to 2" on Sweet Hrs. Wy @ 5165	△
4/19/83	Changed 2" W to 3" W @ Rd. Sta. 5+65 f added 3" Meter	△
11/1/82	Relocated Manhole 13 and added connection to Ex MH 2001	△



NOTE: If Phase III, Part 3 is constructed prior to Phase III, Part 2, remove 8" cap and install sleeve & spacer. If Phase III, Part 2 is constructed prior to Phase III, Part 3 install 8" cap.

NOTE: If Phase II, Part 3 is constructed prior to Phase II, Part 2, remove 8" Plug and install sleeve and spacer. If Phase II, Part 2 is constructed prior to Phase II, Part 3 install 8" Plug.

Note: Numbers shown below lot number indicates lowest floor elevation that should be set for each house to be served by the 8" Gravity Sewer constructed under this contract.

NOTE: ALL HYDRANT BURY LINES TO BE FIELD CHECKED AGAINST ROAD GRADES

DEPARTMENT OF PUBLIC WORKS
 HOWARD COUNTY, MARYLAND
 Robert M. ... 10-20-01
 CHIEF BUREAU OF UTILITIES, DATE CHIEF LAND DEVELOPMENT DIVISION, DATE

CENTURY ENGINEERING, INC.
 CONSULTING ENGINEERS - PLANNERS
 TOWSON, MARYLAND 21204

DEPARTMENT OF PUBLIC WORKS
 HOWARD COUNTY, MARYLAND
 ... 11/1/02
 DIRECTOR OF PUBLIC WORKS DATE CHIEF BUREAU OF ENGINEERING DATE

CONTRACT NO. 34-0985-D
 PLAN OF WATER AND SEWER MAINS

9/14/04 Provide D.H.C. for Lots 454, 433
 11/1/02 Removed sewer pipe (W) out of MH 12 relocated SHC for Lots 421, 422

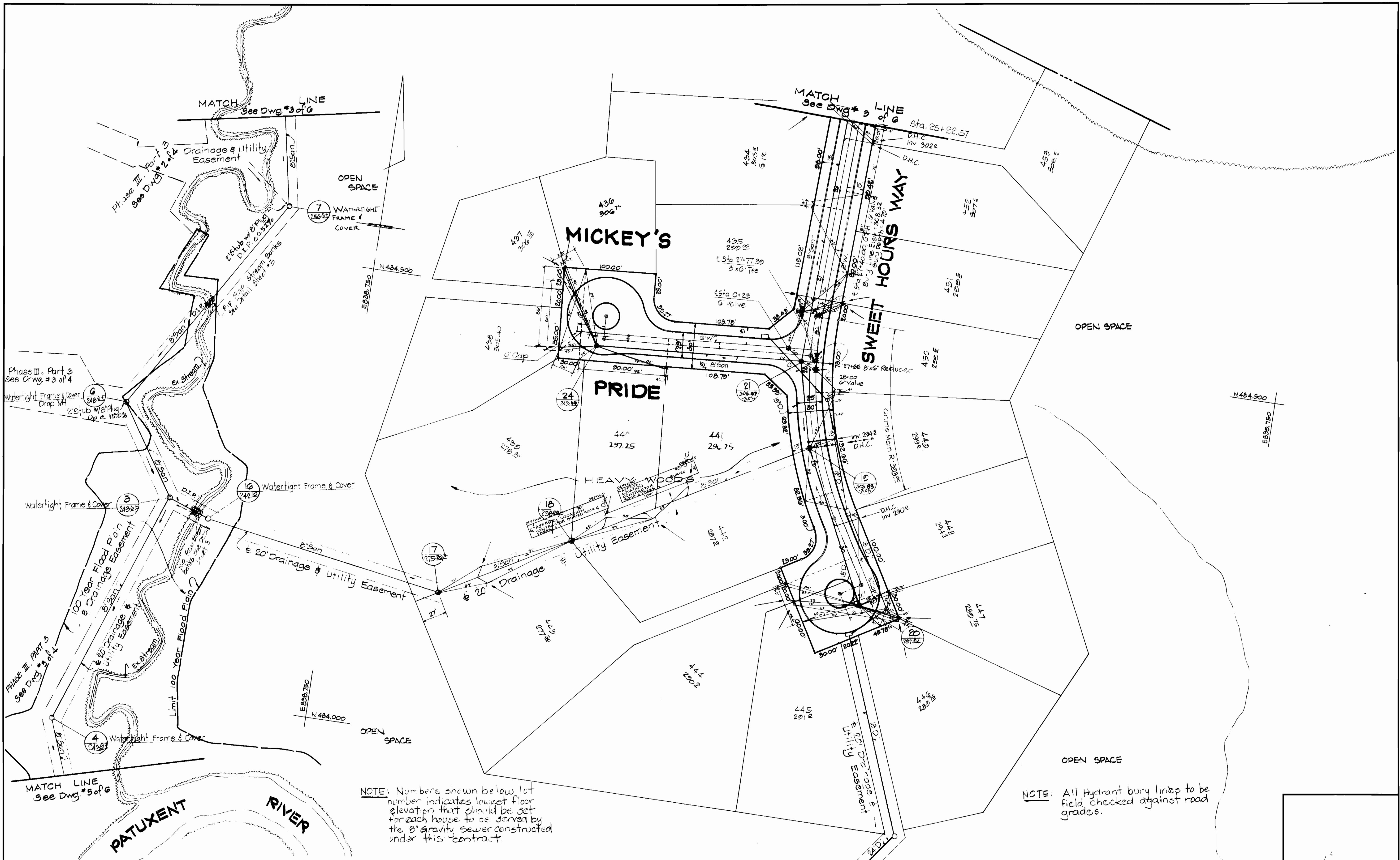
VILLAGE OF KINGS CONTRIVANCE
 SECTION 2, AREA 3, PHASE III, PART 2
 6TH ELECTION DISTRICT, HOWARD COUNTY, MARYLAND

DRAWING NO. 3 OF 6
 SCALE 1" = 30'

As Built - December 1904

As Built - December 1904

As Built - December 1904



NOTE: Numbers shown below lot number indicates lowest floor elevation that should be set for each house to be served by the 6" gravity sewer constructed under this contract.

NOTE: All Hydrant bury lines to be field checked against road grades.

DEPARTMENT OF PUBLIC WORKS
 HOWARD COUNTY, MARYLAND
 R. H. ... 10-30-81
 CHIEF BUREAU OF UTILITIES DATE CHIEF LAND DEVELOPMENT DIVISION DATE

CENTURY ENGINEERING, INC.
 CONSULTING ENGINEERS - PLANNERS
 TOWSON, MARYLAND 21204

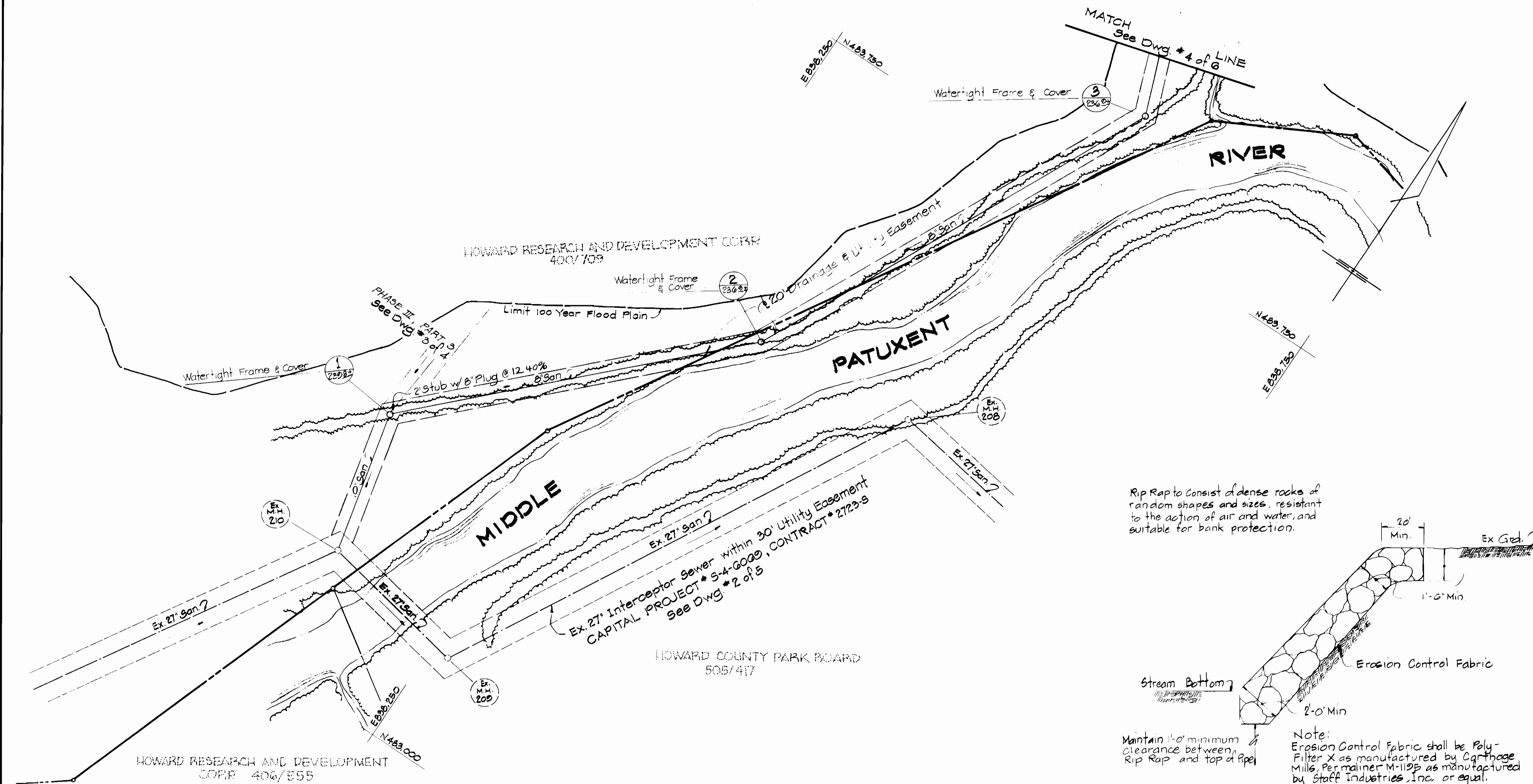
DEPARTMENT OF PUBLIC WORKS
 HOWARD COUNTY, MARYLAND
 ... 11/1/81
 DIRECTOR OF PUBLIC WORKS DATE CHIEF BUREAU OF ENGINEERING DATE

3/14/84 Provide D.H.C. for Lot: 453, 434, 452, 443, 448
 CONTRACT NO. 34-0985-D

PLAN OF
 WATER AND SEWER MAINS

VILLAGE OF KINGS CONTRIVANCE
 SECTION 2, AREA 3, PHASE III, PART 2
 6TH ELECTION DISTRICT, HOWARD COUNTY, MARYLAND

DRAWING NO. 4 OF 6 SCALE 1"=50'



Rip Rap to consist of dense rocks of random shapes and sizes, resistant to the action of air and water, and suitable for bank protection.

Stream Bottom

Erosion Control Fabric

2'-0" Min

1'-0" Min

2'-0" Min

Note: Erosion Control Fabric shall be Poly-Filter X as manufactured by Carthage Mills, Permaliner M-112P as manufactured by Staff Industries, Inc. or equal.

Maintain 1'-0" minimum clearance between Rip Rap and top of Pipe

Detail
STREAM CROSSING SLOPE PROTECTION

DEPARTMENT OF PUBLIC WORKS
HOWARD COUNTY, MARYLAND

Robert B. ... 10/30/81
CHIEF, BUREAU OF UTILITIES, DATE CHIEF, LAND DEVELOPMENT DIVISION, DATE

CENTURY ENGINEERING, INC.
CONSULTING ENGINEERS - PLANNERS
TOWSON, MARYLAND 21204

DEPARTMENT OF PUBLIC WORKS
HOWARD COUNTY, MARYLAND

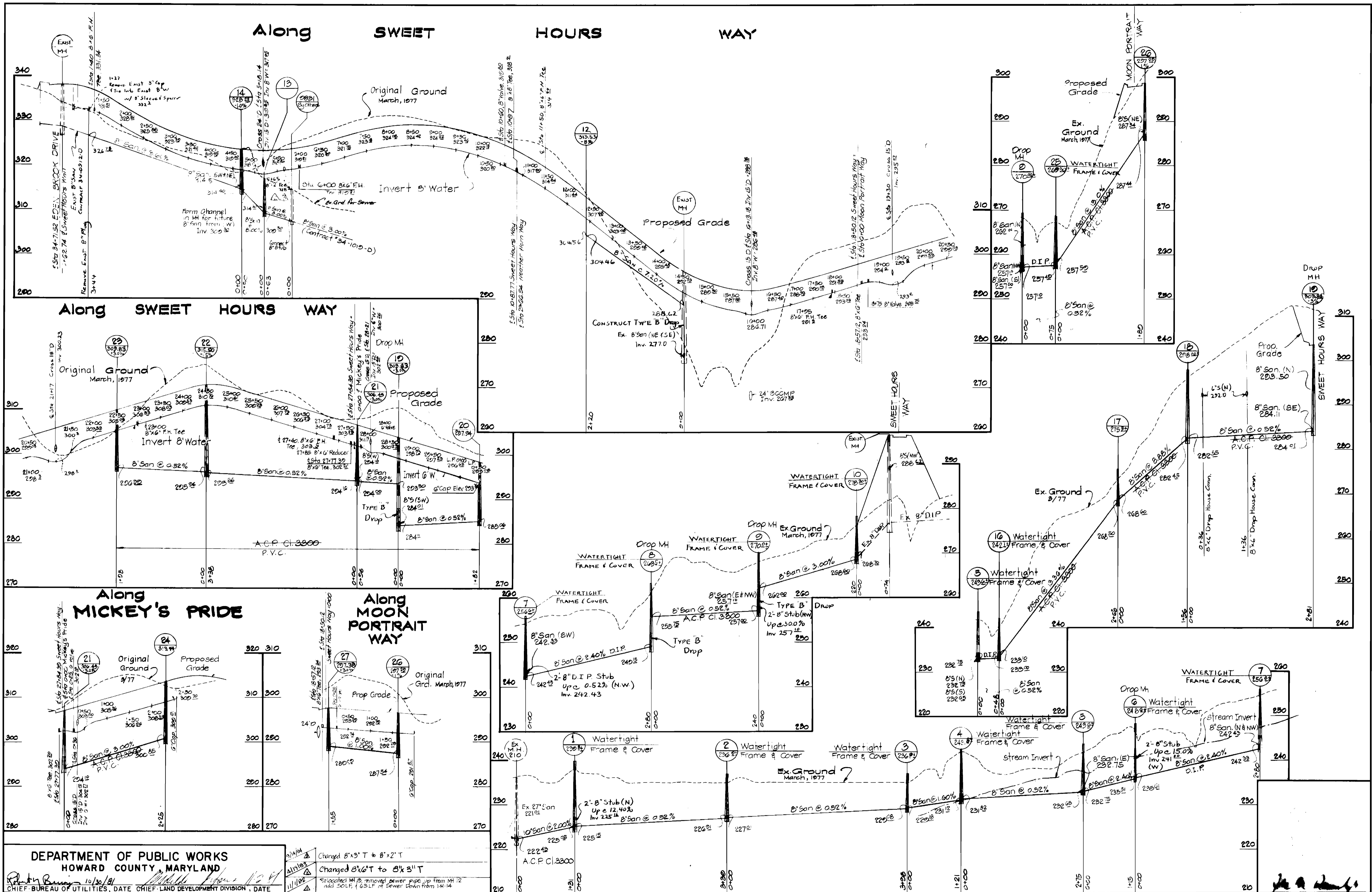
James ... 11/2/81 *William E. ...* 11/2/81
DIRECTOR OF PUBLIC WORKS, DATE CHIEF, BUREAU OF ENGINEERING, DATE

CONTRACT NO. 34-0985-D

PLAN OF
WATER AND SEWER MAINS

VILLAGE OF KINGS CONTRIVANCE
SECTION 2, AREA 3, PHASE III, PART 2
6 ELECTION DISTRICT, HOWARD COUNTY, MARYLAND

DRAWING NO. 5 OF 6	SCALE
--------------------	-------



DEPARTMENT OF PUBLIC WORKS
 HOWARD COUNTY, MARYLAND
 Chief Bureau of Utilities, Date: 10/30/81
 Chief Land Development Division, Date: 11/1/81
 CENTURY ENGINEERING, INC.
 CONSULTING ENGINEERS - PLANNERS
 TOWSON, MARYLAND 21204

DEPARTMENT OF PUBLIC WORKS
 HOWARD COUNTY, MARYLAND
 Director of Public Works, Date: 11/1/81
 Chief Bureau of Engineering, Date: 11/1/81
 CHANGED 8" x 3" T to 8" x 2" T
 CHANGED 8" x 6" T to 8" x 3" T
 Relocated MH 12, removed sewer pipe up from MH 12 and 50 LF of 6" LF of sewer down from 141.14

CONTRACT NO. 34-0985-D

PROFILE OF
 WATER AND SEWER MAINS

VILLAGE OF KINGS CONTRIVANCE
 SECTION 2, AREA 3, PHASE III, PART 2
 6TH ELECTION DISTRICT, HOWARD COUNTY, MARYLAND

DRAWING NO. 6
 OF 9
 SCALE
 Horiz: 1"=100'
 Vert: 1"=10'