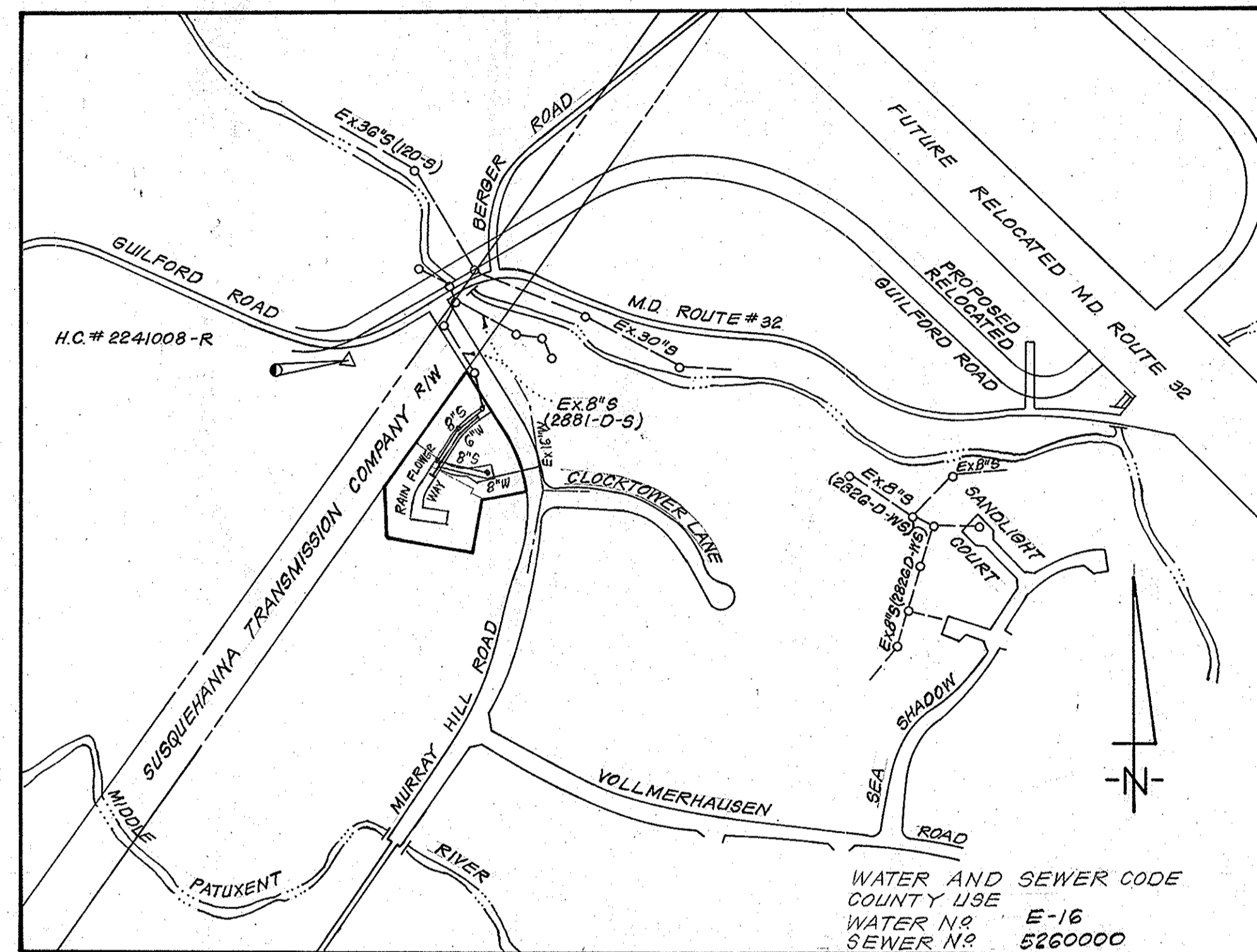


Type of Buildings	Residential Townhouses
Number of Lots	48
Number of Water House Connections	50
Number of Sewer House Connections	48
Drainage Area	Little Patuxent



VICINITY MAP
Scale: 1" = 600'

GENERAL NOTES

- Approximate location of existing mains are shown. The contractor shall take all necessary precautions to protect existing mains and services and maintain uninterrupted supply. Any damage incurred shall be repaired immediately to the satisfaction of the Inspector, at the Contractor's expense.
- All horizontal controls are based on Maryland State Coordinates.
- All vertical controls are based on U.S.G.S. Datum.
- All pipe elevations shown are invert elevations.
- Clear all utilities by a minimum of 6" Clear all poles by 2'-0" minimum or tunnel as required. Any cost incurred to the Contractor for tunneling or bracing at poles shall be included in unit prices bid for excavation and backfill.
- For details not shown on the drawings use Howard County Standard Details.
- For materials and construction methods use Howard County Standard Specifications.
- Contractor shall locate existing utilities a minimum of two (2) weeks in advance of construction operations in the vicinity of proposed utilities at his own expense.
- Contractor shall notify the following utilities or agencies at least five (5) working days before starting work shown on these plans.
 - State Highway Administration - 531-5533
 - Baltimore Gas & Electric Company - Underground Electric Distribution Customer Service - 685-0123
 - Baltimore Gas & Electric Company - Underground Gas Distribution Customer Service - 685-0123
 - Engineering - Damage Control - 234-5821
 - "Miss Utility" - 1-559-0100
 - Chesapeake & Potomac (C&P) Telephone Company - 725-2076
 - American Telephone and Telegraph - Cable Location Division - 393-3553
 - Colonial Pipeline Company - 781-4641
 - Bureau of Utilities Howard County - 902-2360
- Trees are to be protected from damage to maximum extent. Trees located within the construction strip are not to be removed or damaged by the contractor.
- Contractor shall remove trees, stumps and roots along line of excavation as directed by the Inspector. Payment for such removal shall be included in the unit price bid for excavation and backfill.
- Place regulation "Men Working" and warning signs as required to comply with Maryland State Highway Administration Manual of Traffic Control for Highway Construction and Maintenance Operations.
- All water mains to be C.I.P. or D.I.P. unless otherwise noted.
- Top of all water mains to have a minimum of 3'-1/2' cover unless otherwise noted.
- Valves adjacent to tees shall be strapped to tees.
- Block all fittings with concrete.
- Bury line elevations on Fire hydrants shall be set to the elevations shown on the drawings. All fire hydrants shall be strapped and buttressed with concrete in accordance with standard details. Soil around the fire hydrant to be compacted in accordance with the details of the Standard Specifications.
- All water house connections shall be for an inside meter setting.
- The contractor shall not operate any water main valves on the existing system.
- All sewer mains shall be C.S.P.X., Y.C.P.X., or A.C.P. Class 2400 unless otherwise noted.
- The contractor shall provide a joint in all sewer mains within 2'-0" of exterior manhole wall.
- All manholes shall be 4'-0" inside diameter, unless otherwise noted.
- Water mains and Water house connection lines must have at least one foot of separation from the sanitary sewer and sewer house connections as they pass above it.

QUANTITIES			
ITEM	ESTM'D.	AS-BUILT	MATERIAL/SUPPLIER
8" S	936 LF	1060 LF	V.C.P./LOGAN - A1P
6" W	277 LF	277 LF	D.I.P./GRIFFIN - A1P
8" W	737 LF	737 LF	D.I.P./GRIFFIN - A1P
PH	2 Ea.	2 Ea.	DRESSER - M1H/ FLOW INDUSTRIES
6" (Excl. PH)	1 Ea.	1 Ea.	" " " "
16" B" T94V	1 Ea.	1 Ea.	" " " "
8" V	1 Ea.	2 Ea.	" " " "
MANHOLE			ATLANTIC PRECAST



g. h. z. ek.
10-4-82.

COLUMBIA
LOTS C-1 THRU C-13 & C-63 THRU C-97
VILLAGE OF KINGS CONTRIVANCE
SECTION 3 AREA 2
PART I
C. 24-0983-D

Sediment Control Measures will be implemented in accordance with Article No. 15 of the Specifications and Road Construction Plans F-83-19.

REVIEWED FOR HOWARD SOIL CONSERVATION DISTRICT AND MEETS TECHNICAL REQUIREMENT
 Signature: *James M. [unclear]* DATE: 10-26-82
 U.S. SOIL CONSERVATION SERVICE

This Development Plan is approved for Soil Erosion and Sediment Control by the Howard Soil Conservation District.
 APPROVED: *[Signature]* DATE: 10-26-82
 Howard S.C.D.

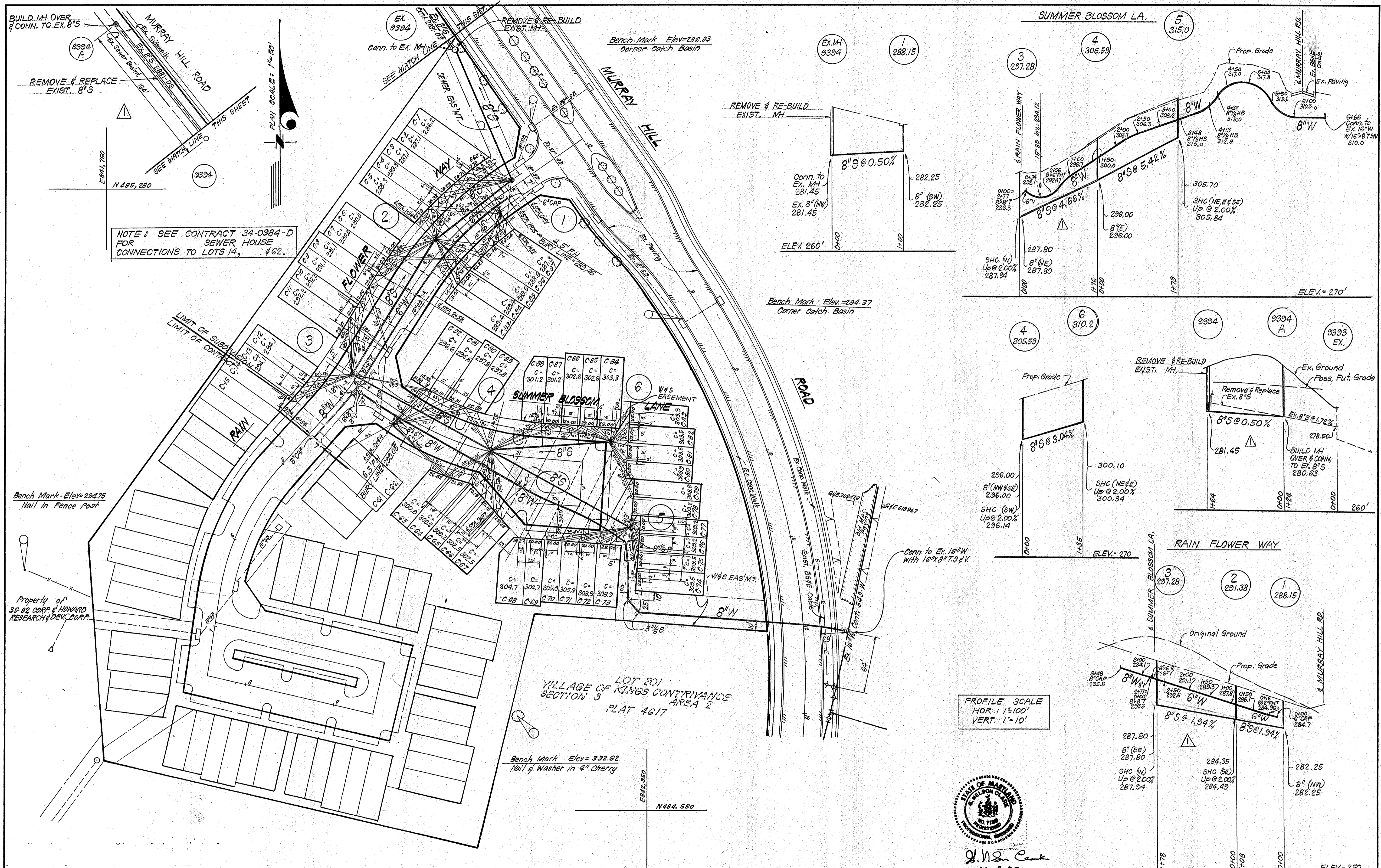
CONTRACT NO. 24-0983-D W&S
 VILLAGE OF KINGS CONTRIVANCE
 SECTION 3 AREA 2
 HOWARD COUNTY, MARYLAND

DEPARTMENT OF PUBLIC WORKS

CLARK • FINEFROCK & SACKETT ENGINEERS • PLANNERS • SURVEYORS 11315 LOCKWOOD DRIVE • SILVER SPRING, MARYLAND • (301) 593-3400	DEPARTMENT OF PUBLIC WORKS HOWARD COUNTY, MARYLAND Director of Public Works: <i>John F. Neuman</i> DATE: 10-28-82 Chief, Bureau of Engineering: <i>[Signature]</i> DATE: 10-28-82 Chief, Bureau of Utilities: <i>[Signature]</i> DATE: 10-27-82 Chief, Land Development: <i>[Signature]</i> DATE: 10-28-82	CONTRACT NO. 24-0983-D	TITLE SHEET	COLUMBIA VILLAGE OF KINGS CONTRIVANCE 6TH ELECTION DISTRICT	DRAWING NO. 1 OF 2 SCALE: As Shown
	AS-BUILT JULY, 1983				

983/1 WS

983/2 WS



NOTE: SEE CONTRACT 34-0984-D FOR SEWER HOUSE CONNECTIONS TO LOTS 14, 15 & 16.

PROFILE SCALE
HOR. 1"=100'
VERT. 1"=10'



J. N. Cant
10-4-82

DEPARTMENT OF PUBLIC WORKS
HOWARD COUNTY, MARYLAND
Director of Public Works: J. F. N...
Chief Bureau of Engineering: ...
Chief Bureau of Utilities: ...
Chief Land Development Div.: ...

1-21-14	CURED-IN-PLACE-PIPE LINING THE ENTIRE CONTRACT	11-26-82	Lowered 8" between MH 1 thru 4. Added Const. of 164' 8"
No.	DATE	REVISION	REVISION

CONTRACT NO. 24-0983-D
PLAN & PROFILES OF
WATER & SEWER MAINS

COLUMBIA
VILLAGE OF KINGS CONTRIVANCE
6th ELECTION DISTRICT

DRAWING NO. 2 OF 2
SCALE AS SHOWN

CLARK • FINEFROCK & SACKETT
ENGINEERS • PLANNERS • SURVEYORS
11315 LOCKWOOD DRIVE • SILVER SPRING, MARYLAND • (301) 593-3400

AS-BUILT JULY, 1983