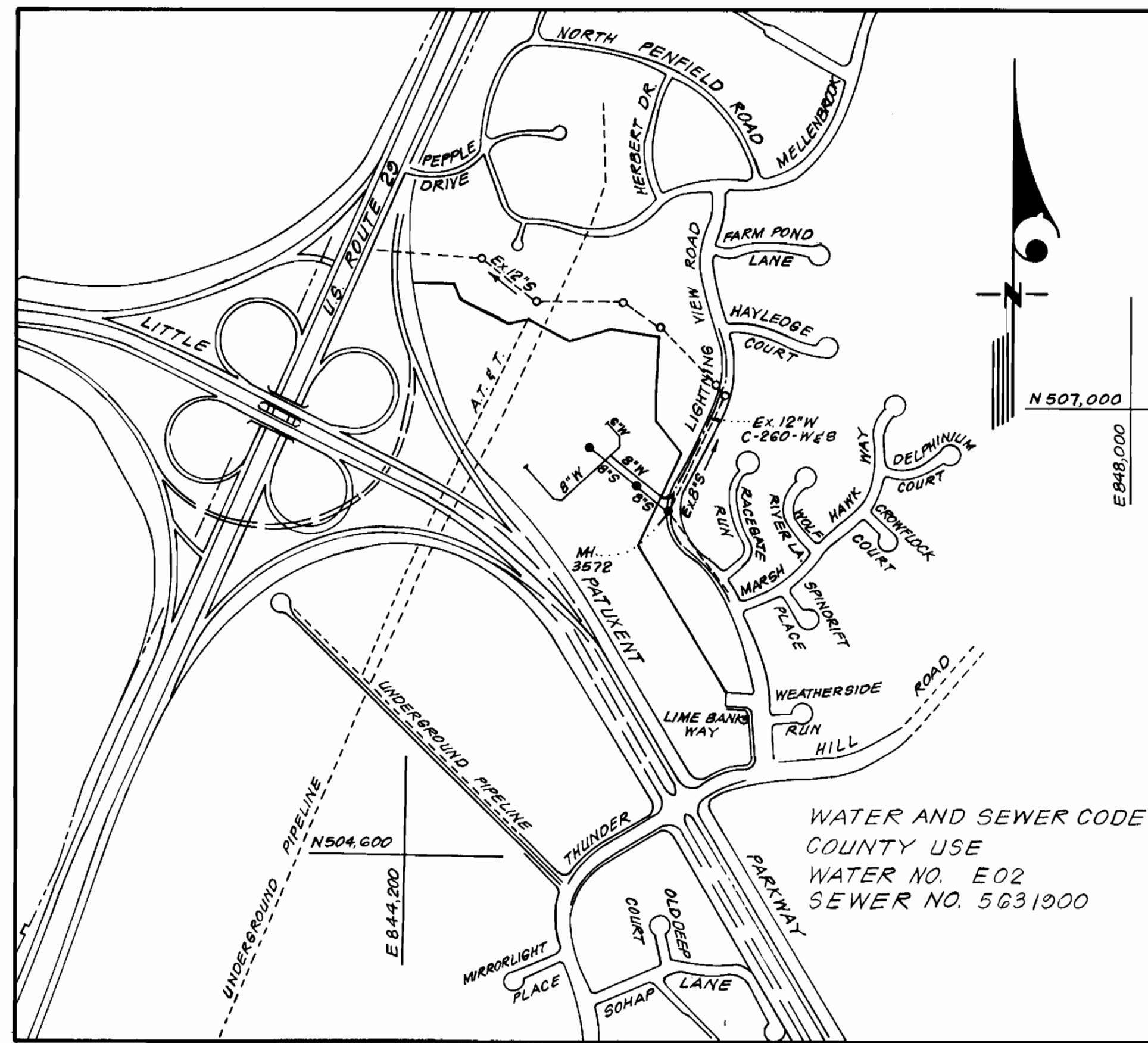


Type of Buildings	Office
Number of Lots	2
Number of Water House Connections	2
Number of Sewer House Connections	2
Drainage Area	Little Patuxent



VICINITY MAP
Scale: 1"=600'

GENERAL NOTES

1. Approximate location of existing mains are shown. The contractor shall take all necessary precautions to protect existing mains and services and maintain uninterrupted supply. Any damage incurred shall be repaired immediately to the satisfaction of the Inspector, at the Contractor's expense.
2. All horizontal controls are based on Maryland State Coordinates.
3. All vertical controls are based on U.S.G.S. Datum.
4. All pipe elevations shown are invert elevations.
5. Clear all utilities by a minimum of 6" Clear all poles by 2'-0" minimum or tunnel as required. Any cost incurred to the Contractor for tunneling or bracing at poles shall be included in unit prices bid for excavation and backfill.
6. For details not shown on the drawings use Howard County Standard Details.
7. For materials and construction methods use Howard County Standard Specifications.
8. Contractor shall locate existing utilities a minimum of two (2) weeks in advance of construction operations in the vicinity of proposed utilities at his own expense.
9. Contractor shall notify the following utilities or agencies at least five (5) working days before starting work shown on these plans:
 State Highway Administration - 531-5533
 Baltimore Gas & Electric Company - Underground Electric Distribution Customer Service - 685-0123
 Baltimore Gas & Electric Company - Underground Gas Distribution Customer Service - 685-0123
 Engineering - Damage Control - 234-5621
 "Miss Utility" - 1-550-0100
 Chesapeake & Potomac (C&P) Telephone Company - 725-9076
 American Telephone and Telegraph - Cable Location Division - 303-3553
 Colonial Pipeline Company - 781-4641
 Bureau of Utilities Howard County - 902-2360
10. Trees are to be protected from damage to maximum extent. Trees located within the construction strip are not to be removed or damaged by the contractor.
11. Contractor shall remove trees, stumps and roots along line of excavation as directed by the Inspector. Payment for such removal shall be included in the unit price bid for excavation and backfill.
12. Place regulation "Men Working" and warning signs as required to comply with Maryland State Highway Administration Manual of Traffic Control for Highway Construction and Maintenance Operations.
13. All water mains to be D.I.P. unless otherwise noted.
14. Top of all water mains to have a minimum of 3'-1/2' cover unless otherwise noted.
15. Valves adjacent to trees shall be strapped to trees.
16. Black all fittings with concrete.
17. Bury line elevations on fire hydrants shall be set to the elevations shown on the drawings. All fire hydrants shall be strapped and buttressed with concrete in accordance with standard details. Soil around the fire hydrant to be compacted in accordance with Section 5-15 of the Standard Specifications.
18. All water house connections shall be for an inside meter setting.
19. The contractor shall not operate any water main valves on the existing system.
20. All sewer mains shall be C.S.P.X., Y.C.P.X., or A.C.P. Class 2400 unless otherwise noted.
21. The contractor shall provide a joint in all sewer mains within 2'-0" of exterior manhole wall.
22. All manholes shall be 4'-0" inside diameter, unless otherwise noted.
23. Water main and water house connection lines must have one foot separation from the sanitary sewer and sewer house connections as they pass above it.

Sediment Control Measures will be implemented in accordance with Article No. 15 of the Specifications and Site Development Plan SDP-81-138.

REVIEWED FOR HOWARD SOIL CONSERVATION DISTRICT AND MEETS TECHNICAL REQUIREMENT
Darryl J. Reichen 6-2-81
 SIGNATURE DATE

U.S. SOIL CONSERVATION SERVICE
 This Development Plan is approved for Soil Erosion and Sediment Control by the Howard Soil Conservation District.

APPROVED:
W. S. Clark 6-28-81
 Howard S.C.D. DATE

CONTRACT NO. 24-0982-DW&S
 VILLAGE OF OAKLAND MILLS
 SECTION 3 AREA 2
 HOWARD COUNTY, MARYLAND
 DEPARTMENT OF PUBLIC WORKS

QUANTITIES			
ITEM	ESTM'D	AS-BUILT	MATERIAL SUPPLIER
8" Sewer	605'	600'	P.V.C./Midco Utilities Supply Inc.
8" Water	1068'	1135'	D.I.P./Atlantic States Cast Iron Pipe Co.
6" Water	265'	229'	D.I.P./Flow Industries Inc.
8" T.S. & V.	1	1	" " " "
6" Valves (Excluding Ed. Valves)	2	2	" " " "
8" Valves	2	3	" " " "
Fire Hydrants	3	3	" " " "

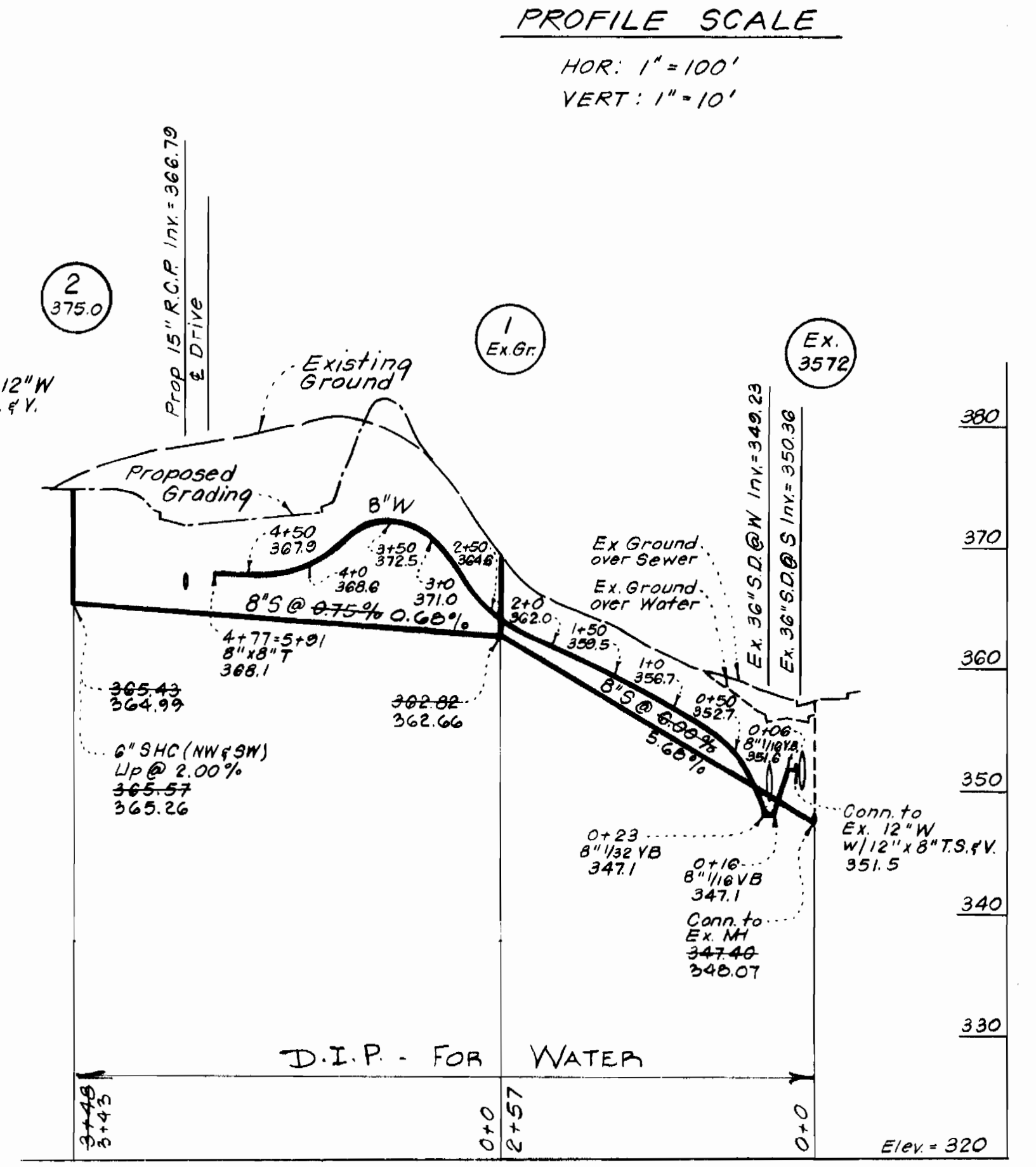
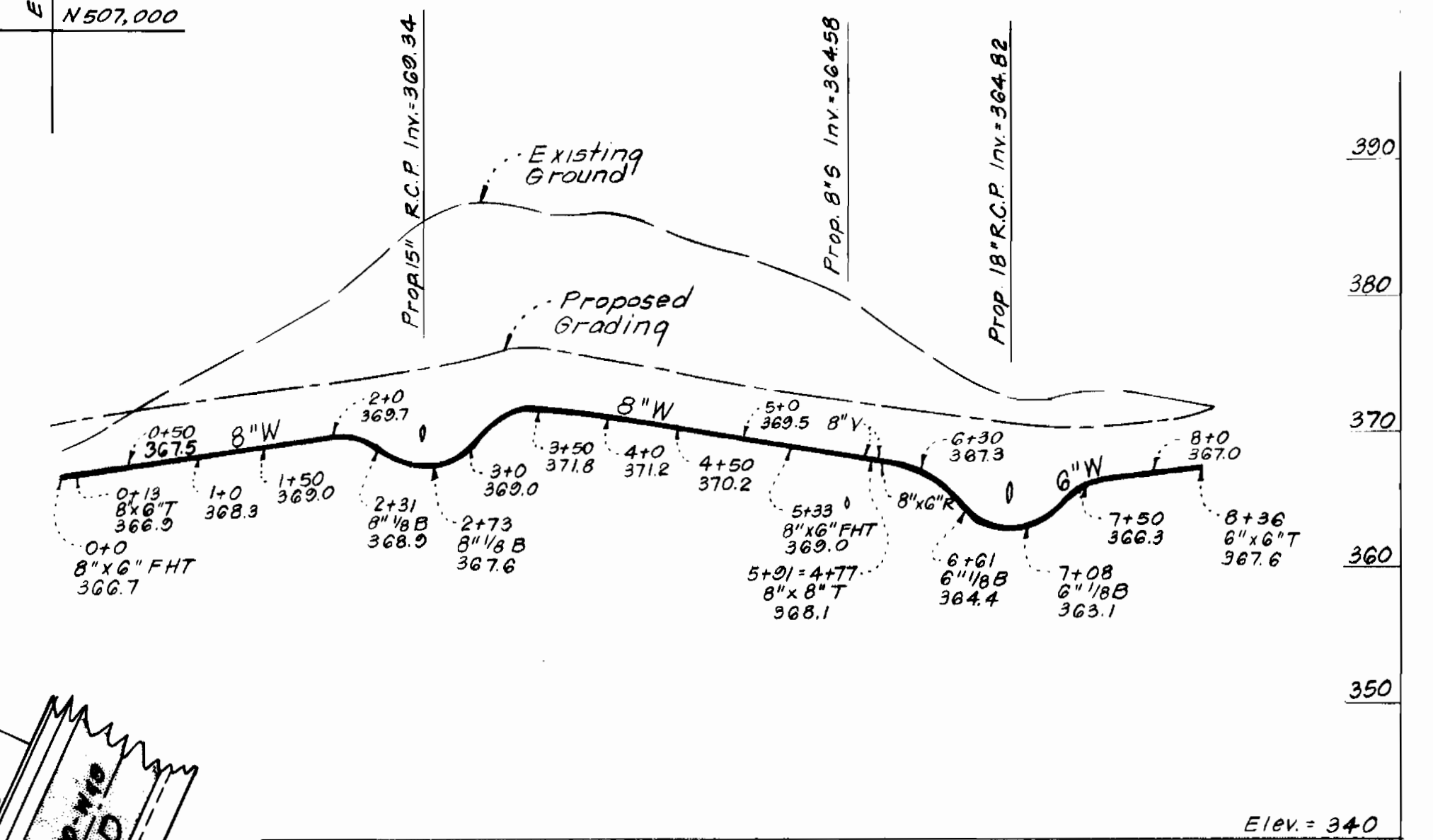
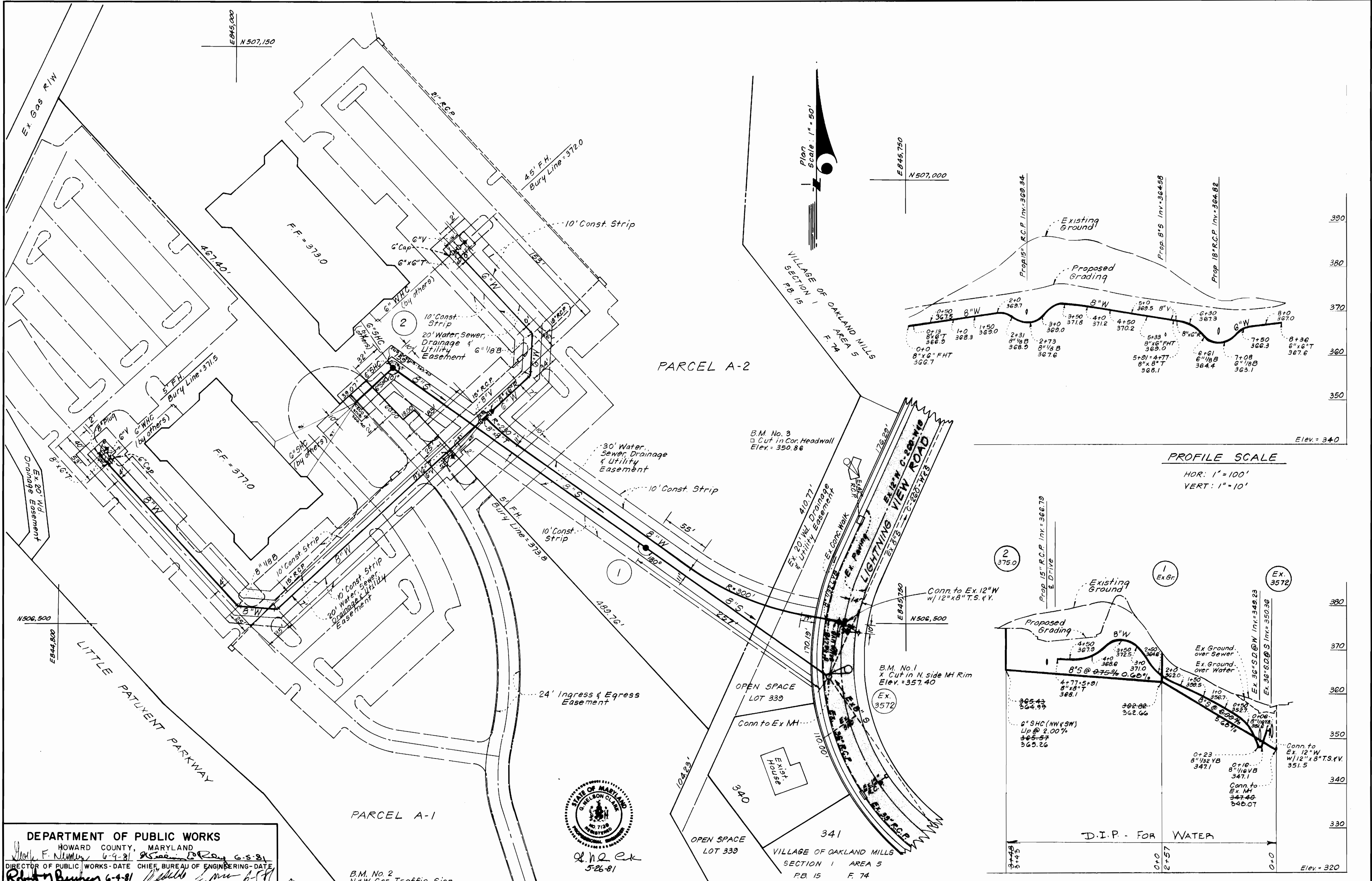


COLUMBIA
 RESUBDIVISION OF PARCEL "A"
 SECTION 3 AREA 2
 PARCELS A-1 & A-2
 Contract No. 24-0982 DW&S

DEPARTMENT OF PUBLIC WORKS
 HOWARD COUNTY, MARYLAND
 Director of Public Works - DATE 6-9-81
 Chief, Bureau of Engineering - DATE 6-5-81
 Chief, Bureau of Utilities - DATE 6-4-81
 Chief, Land Development Division - DATE 6-5-81

CLARK • FINEFROCK & SACKETT
 ENGINEERS • PLANNERS • SURVEYORS
 11315 LOCKWOOD DRIVE • SILVER SPRING, MARYLAND • (301) 593-3400

CONTRACT NO. 24-0982-D	TITLE SHEET	COLUMBIA VILLAGE OF OAKLAND MILLS 6TH ELECTION DISTRICT	DRAWING NO. 1 OF 2	SCALE As Shown
------------------------	-------------	---	--------------------	----------------



DEPARTMENT OF PUBLIC WORKS
 HOWARD COUNTY, MARYLAND
 F. N. N. 6-9-81
 DIRECTOR OF PUBLIC WORKS - DATE
 CHIEF, BUREAU OF ENGINEERING - DATE
 R. B. B. 6-9-81
 CHIEF, BUREAU OF UTILITIES - DATE
 CHIEF, LAND DEVELOPMENT - DATE

B.M. No. 2
 N.E. Cor. Traffic Sign
 Elev. = 389.66



CONTRACT NO. 24-0982-D

PLAN & PROFILES OF WATER & SEWER MAINS

COLUMBIA
 VILLAGE OF OAKLAND MILLS
 6TH ELECTION DISTRICT

DRAWING NO. 2 OF 2
 SCALE As Shown

As Built - November 1981