

GENERAL NOTES

PART I

1. Approximate location of existing mains are shown. The contractor shall take all necessary precautions to protect existing mains and services and maintain uninterrupted supply. Any damage incurred shall be repaired immediately to the satisfaction of the Engineer, at the Contractor's expense.
2. All horizontal controls are based on Maryland State Coordinates.
3. All vertical controls are based on U.S.G.S. Datum.
4. All pipe elevations shown are invert elevations.
5. Clear all utilities by a minimum of 6". Clear all poles by 2'0" minimum or tunnel as required. Any cost incurred to the contractor for tunneling or bracing at poles shall be included in unit prices bid for installation of mains.
6. For details not shown on the drawings, use Howard County Standard Details.
7. For materials and construction methods, use Howard County Standard Specifications.
8. Contractor shall locate existing utilities a minimum of two (2) weeks in advance of construction operations in the vicinity of proposed utilities at his own expense.
9. Contractor shall notify the following utilities or agencies at least five (5) working days before starting work shown on these plans:

State Highway Administration	531-5533
Baltimore Gas & Electric Company- Underground Electric Distribution Customer Service	685-0123
Baltimore Gas & Electric Company- Underground Gas Distribution Customer Service	685-0123
Engineering-"Damage Control"	234-5621
"Miss Utility"	1-559-0100
Chesapeake & Potomac (C&P) Telephone Company	725-9976
American Telephone and Telegraph- Cable Location Division	393-3553
Colonial Pipeline Company	781-4641
Bureau of Utilities, Howard County	992-2366

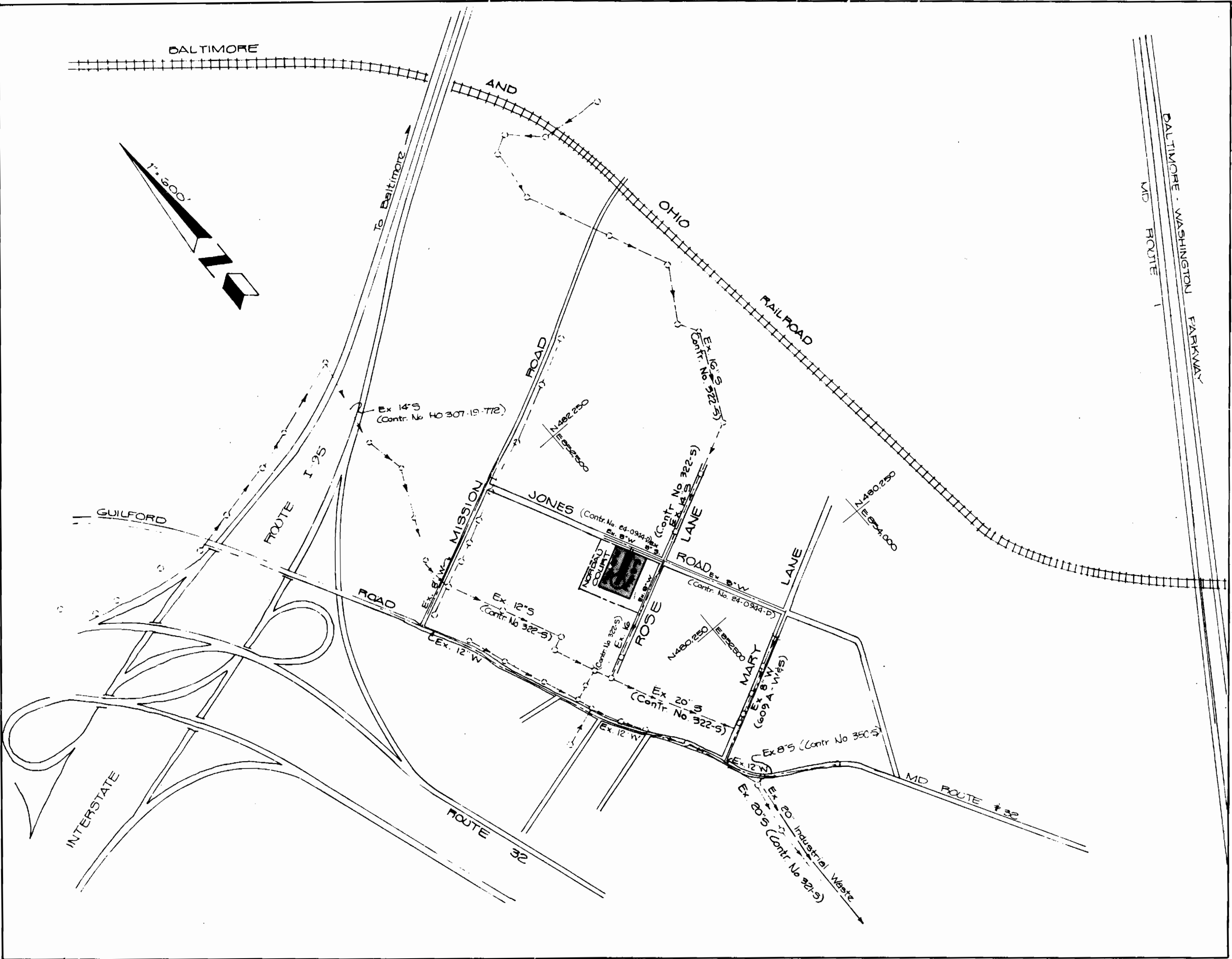
10. Trees are to be protected from damage to maximum extent. Trees located within the construction strip are not to be removed or damaged by the contractor.
11. Contractor shall remove trees, stumps and roots along line of excavation as directed by the Engineer. Payment for such removal shall be included in the unit price bid for excavation and backfill.
12. Place regulation "Men Working" and warning signs as required to comply with Maryland State Highway Administration Manual of Traffic Control for Highway Construction and Maintenance Operations.

WATER - PART II

1. All water mains to be C.I.P. or D.I.P. unless otherwise noted.
2. Top of all water mains to have a minimum of 34" cover unless otherwise noted.
3. Valves adjacent to tees shall be strapped to tees.
4. Block all fittings with concrete.
5. Bury line elevations on fire hydrants shall be set to the elevations shown on the drawings. All fire hydrants shall be strapped and buttressed with concrete in accordance with standard details. Soil around the fire hydrant to be compacted in accordance with Article 37.01 of the Standard Specifications.
6. All water house connections shall be for an inside meter setting.
7. The Contractor shall not operate any water main valves on the existing system.

SEWER - PART III

1. All sewer mains shall be C.S.P.X., P.V.C., V.C.P.X., or A.C.P. Class 2400 unless otherwise noted.
2. The Contractor shall provide a joint in all sewer mains within 2'0" of exterior manhole wall.
3. All manholes shall be 4'0" inside diameter unless otherwise noted.
4. Force mains shall be D.I.P. only.
5. Manholes shown with 12" and 16" walls are brick manholes only.
6. Manholes designated W.T. in plan and profile shall have watertight frame and covers, Standard Details 3-1.4B. Where watertight manhole frame and cover is used, set top of frame 1'6" above finished grade.
7. House(s) with the symbol "C.N.S." indicates that cellar cannot be served.



NOTES

Type of Buildings - Single Family
 Number of Lots - 10
 Number of WHC - 10
 Drainage Area - Little Potomac Water Quality Management Center

Water Zone B-03
 Sewer Zone 4400000

QUANTITIES

Item	Estimated	As-Built	Material/Supplier
8" S	291 LF		
6" W	280 LF		
6" SHC	175 LF		
6" Y Conn	4 each		
3/4" WHC	230 LF		
3/4" Y Conn	5 each		
6" x 6" FHT	1 each		
FH	1 each		
6" Cap	1 each		
4' dia. MH	1 each		
6" V	1 each		

**CONTRACT NO. 24-0979
 NORDAU COURT
 WATER AND SEWER EXTENSIONS
 HOWARD COUNTY, MARYLAND**

DEPARTMENT OF PUBLIC WORKS

PREPARED UNDER THE SUPERVISION OF
George J. Shea
 GEORGE J. SHEA
 5414
 P.E. No. 4-21-81
 DATE
 DEPARTMENT OF PUBLIC WORKS
 HOWARD COUNTY, MARYLAND
George F. Nalley
 DIRECTOR OF PUBLIC WORKS
 DATE
William S. Brown
 CHIEF, BUREAU OF ENGINEERING
 DATE
Allen S. Brown
 CHIEF, UTILITY DIVISION
 DATE



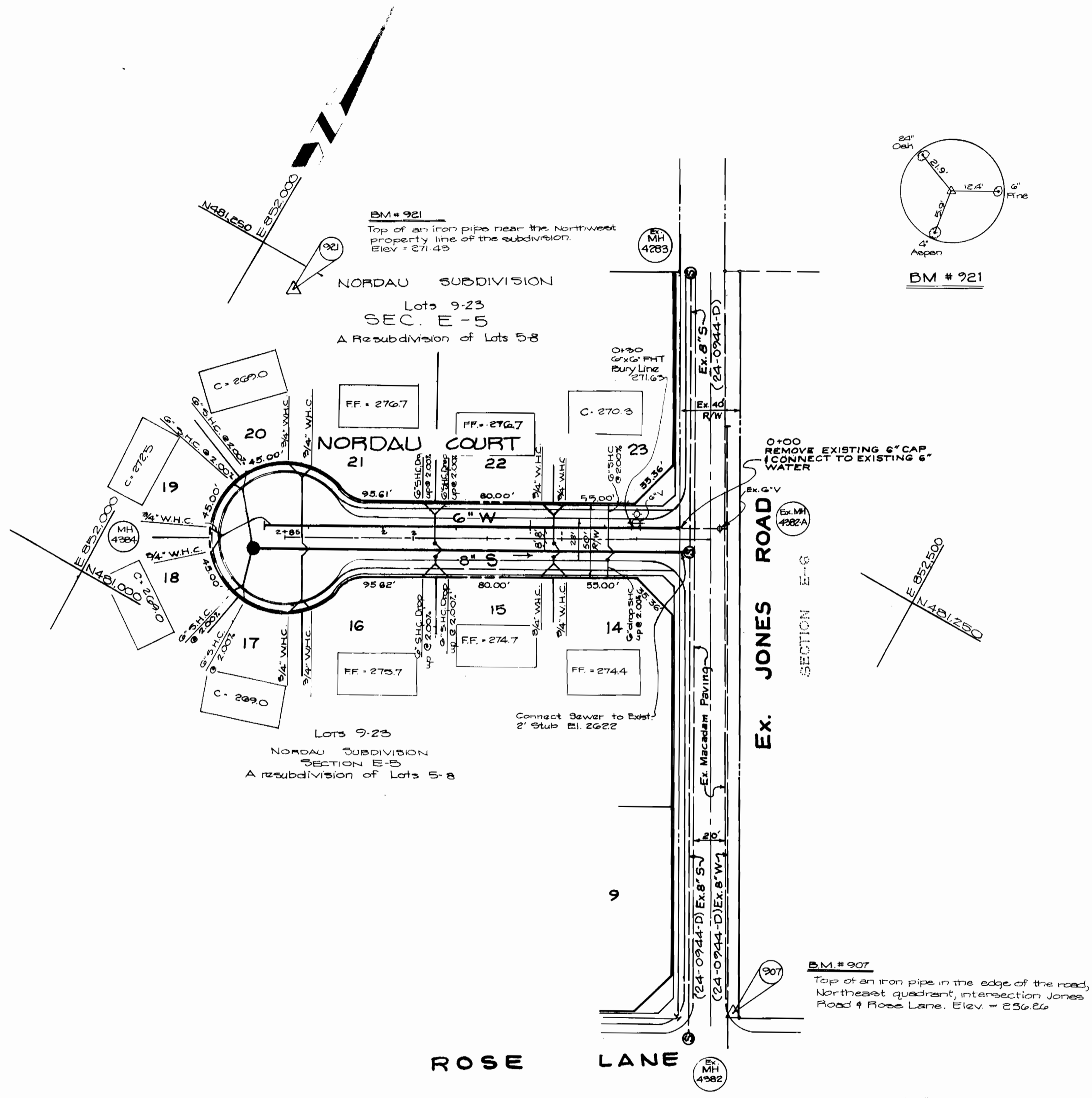
PRC TOUJPS
 ENGINEERS, PLANNERS, SURVEYORS
 1370 PICCARD DRIVE
 ROCKVILLE, MARYLAND 20850
 301-840-1500

CONTRACT No. 24-0979
 CAPITAL PROJECT
 No U-9-7086

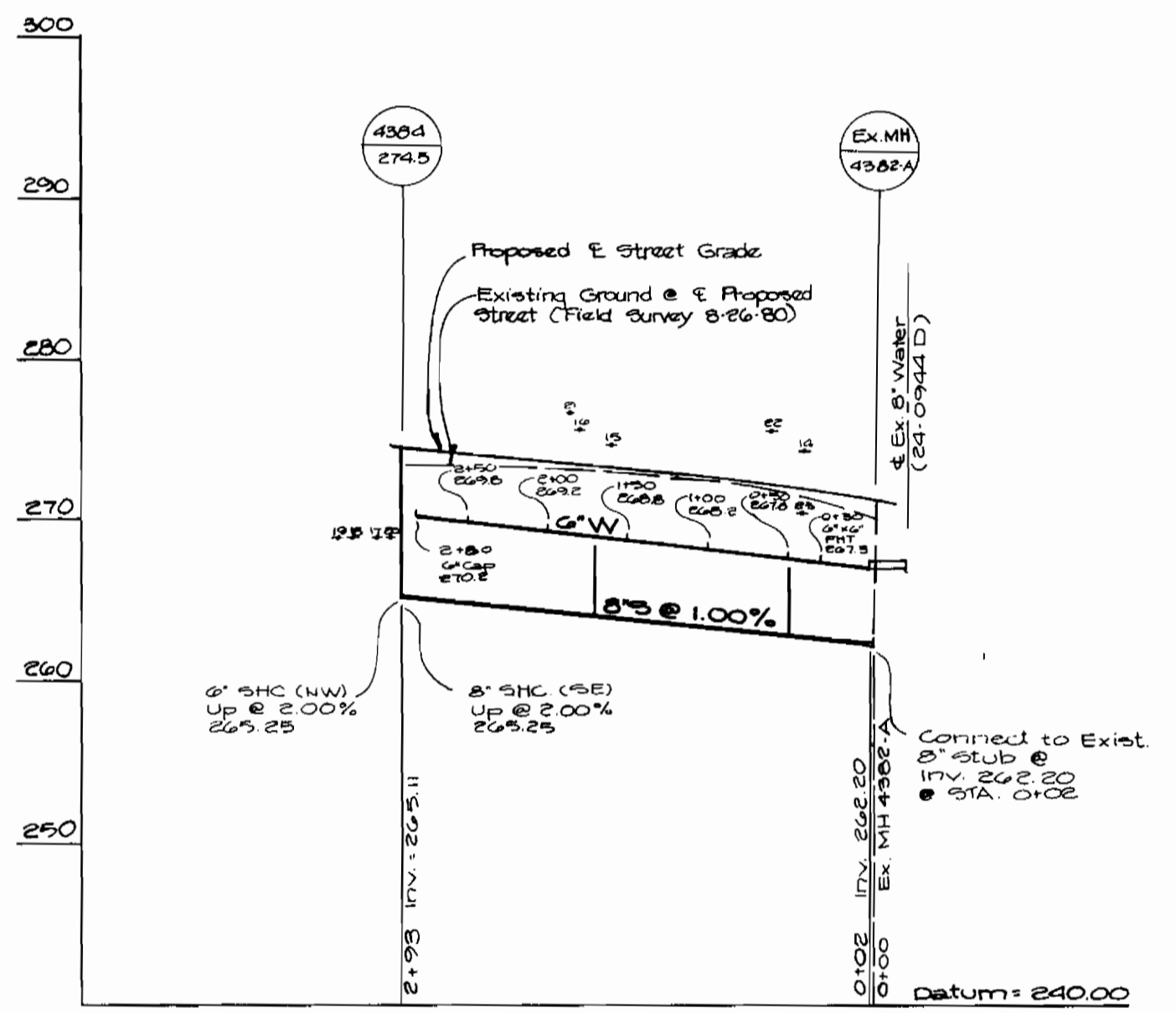
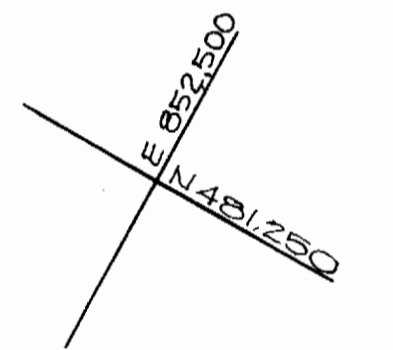
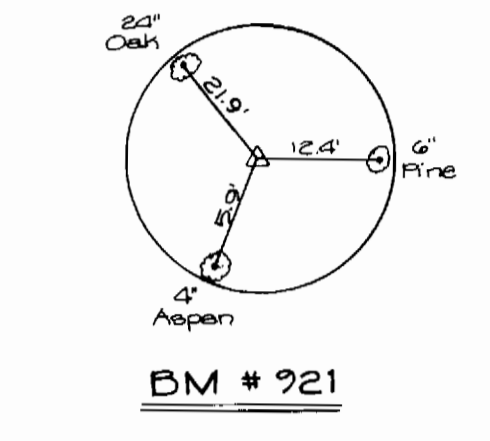
COVER SHEET

CONTRACT No. 24-0979
 NORDAU SUBDIVISION
 to Serve Nordau Court
 NORDAU SUBDIVISION
 ELECTION DISTRICT GUILFORD No 6
 HOWARD COUNTY, MARYLAND
 To Serve Nordau Court beginning at the intersection
 of Jones Road and Nordau Court extending on Nordau Court.
 Date: 5-13-81

DRAWING NO.	1	SCALE	1"=600'
OF	2		



PLAN
Scale: 1" = 50'

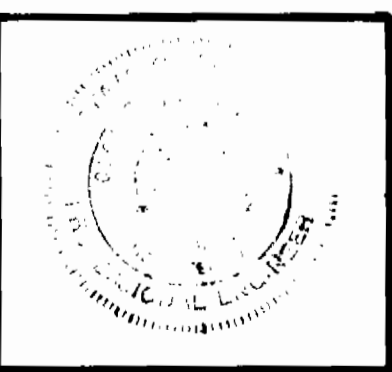


PROFILE
Vert. 1" = 10'
Horz. 1" = 100'

NOTES
All lots fronting on Rose Lane have been previously serviced by water and sewer connections on Contract No. 24-0944-D.

OWNER
Howard County
3430 Court House Drive
Ellicott City, Maryland
21043

PREPARED UNDER THE SUPERVISION OF
George Shea
5414 PENR DATE 4-21-81
DEPARTMENT OF PUBLIC WORKS
HOWARD COUNTY, MARYLAND
William F. Nunley 6-16-81 DATE
DIRECTOR OF PUBLIC WORKS
William E. Reid 6/16/81 DATE
CHIEF, BUREAU OF ENGINEERING
Allen & Brown 6/16/81 DATE
CHIEF, BUREAU OF UTILITIES



PRC TOUPS
ENGINEERS, PLANNERS, SURVEYORS
1370 FICCARD DRIVE
ROCKVILLE, MARYLAND 20850
301 - 840 - 1300

CONTRACT No 24-0979
CAPITAL PROJECT
No U-9-708G

WATER AND SEWER
PLAN & PROFILE

NORDAU SUBDIVISION
ELECTION DISTRICT GUILFORD No. 6
HOWARD COUNTY, MARYLAND
TO SERVE NORDAU COURT

DRAWING
NO. 2
OF 2
SCALE
AS SHOWN

Revised 5-15-81