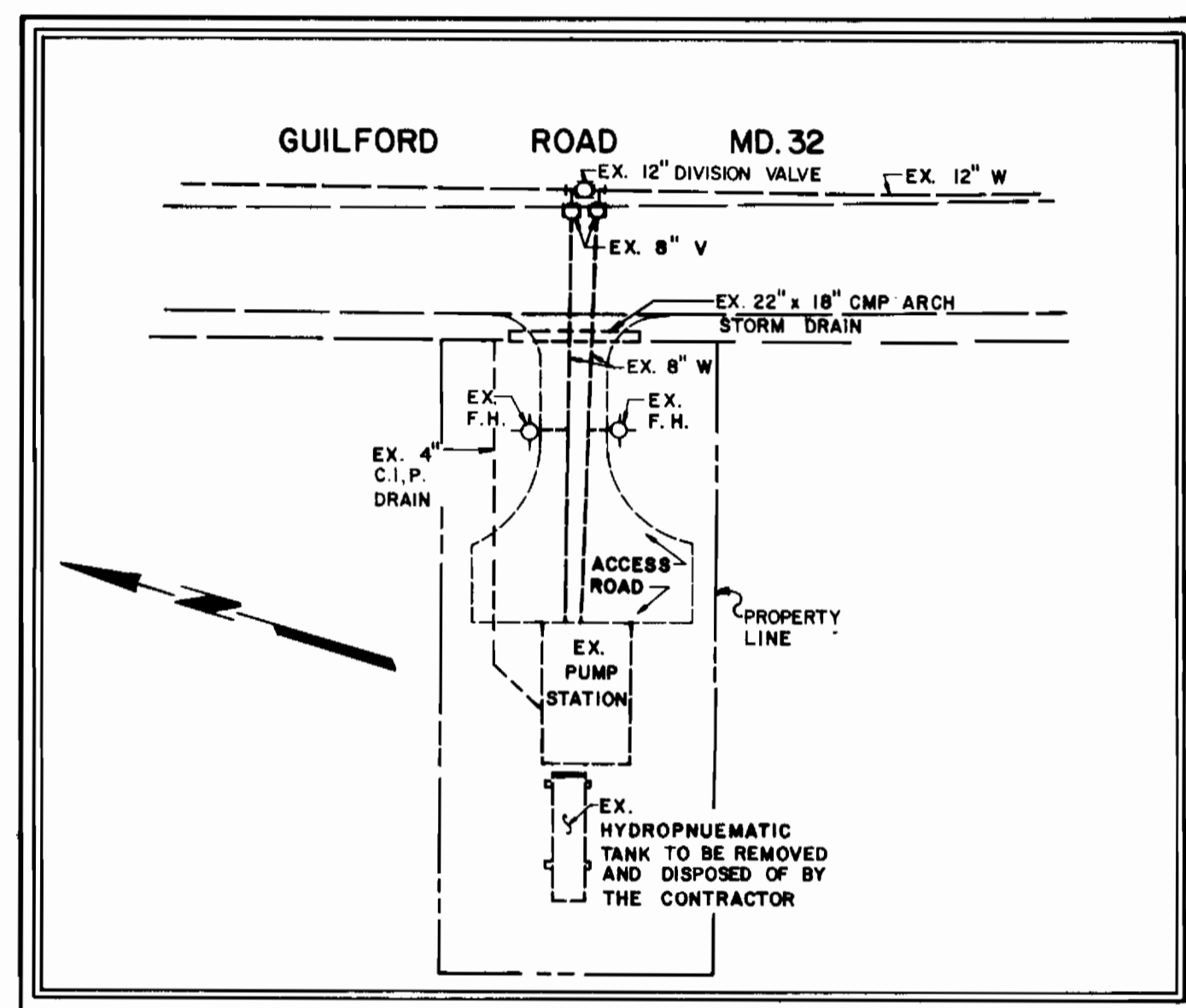
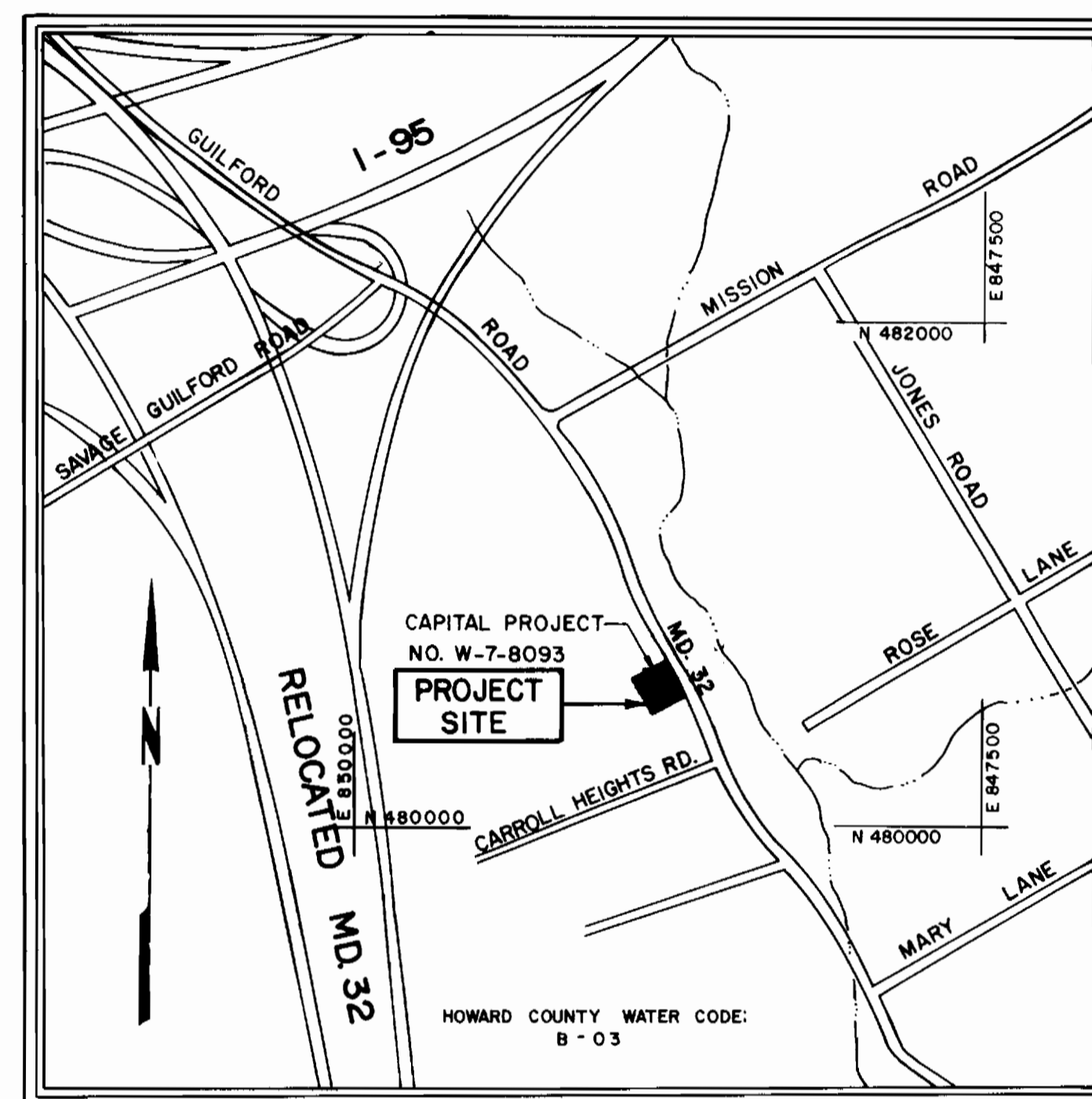


HOWARD COUNTY, MARYLAND

DEPARTMENT OF PUBLIC WORKS



SITE PLAN
Scale: 1"=30'



VICINITY MAP
Scale: 1"=600'

INDEX OF SHEETS	
SHEET NO.	DESCRIPTION
1	TITLE SHEET & VICINITY MAP
2	MECHANICAL DETAILS
3	ELECTRICAL DETAILS

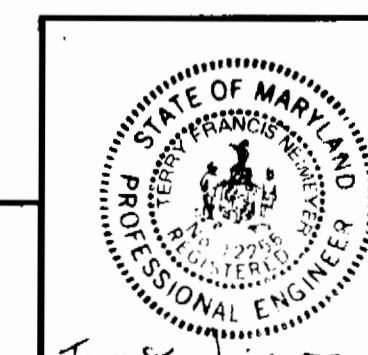
NOTE: THE GENERAL NOTES ARE LOCATED ON SHEET 2.

ROUTE 32 WATER PUMPING STATION MODIFICATIONS

ELECTION DISTRICT : 6

RECORD DRAWING
BY
KIDDE CONSULTANTS, INC.
DATE: FEB. 8, 1989

ROUTE 32 WATER PUMPING
STATION MODIFICATIONS
ELECTION DISTRICT : 6



DES: T.F.N.
DWN: R.W.
CHKD: W.P.W.

KIDDE CONSULTANTS, INC.
ENGINEERS • ARCHITECTS • PLANNERS
BALTIMORE, MARYLAND

DEPARTMENT OF PUBLIC WORKS
HOWARD COUNTY, MARYLAND

1-18-82
DIRECTOR, DEPARTMENT OF PUBLIC WORKS

1-18-82
CHIEF, BUREAU OF ENGINEERING

1-18-82
CHIEF, UTILITY DIVISION

CAPITAL PROJECT NO. W-7-8093
CONTRACT NO. 44-0970

TITLE SHEET & VICINITY MAP

DRAWING
NO. 1
OF 3

SCALE
NONE

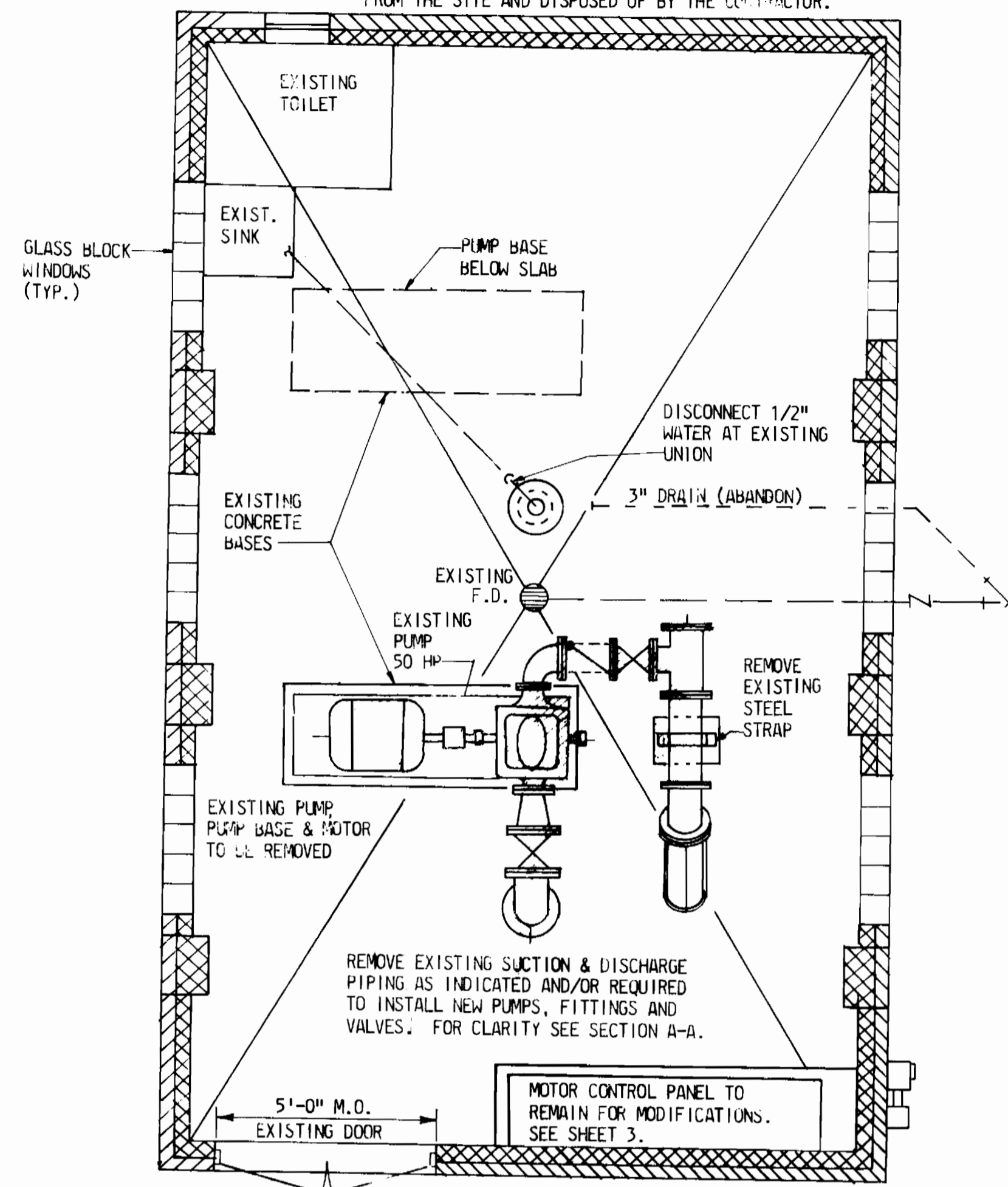
DATE: JULY, 1981

KCI. J.O. NO. 1-80098A

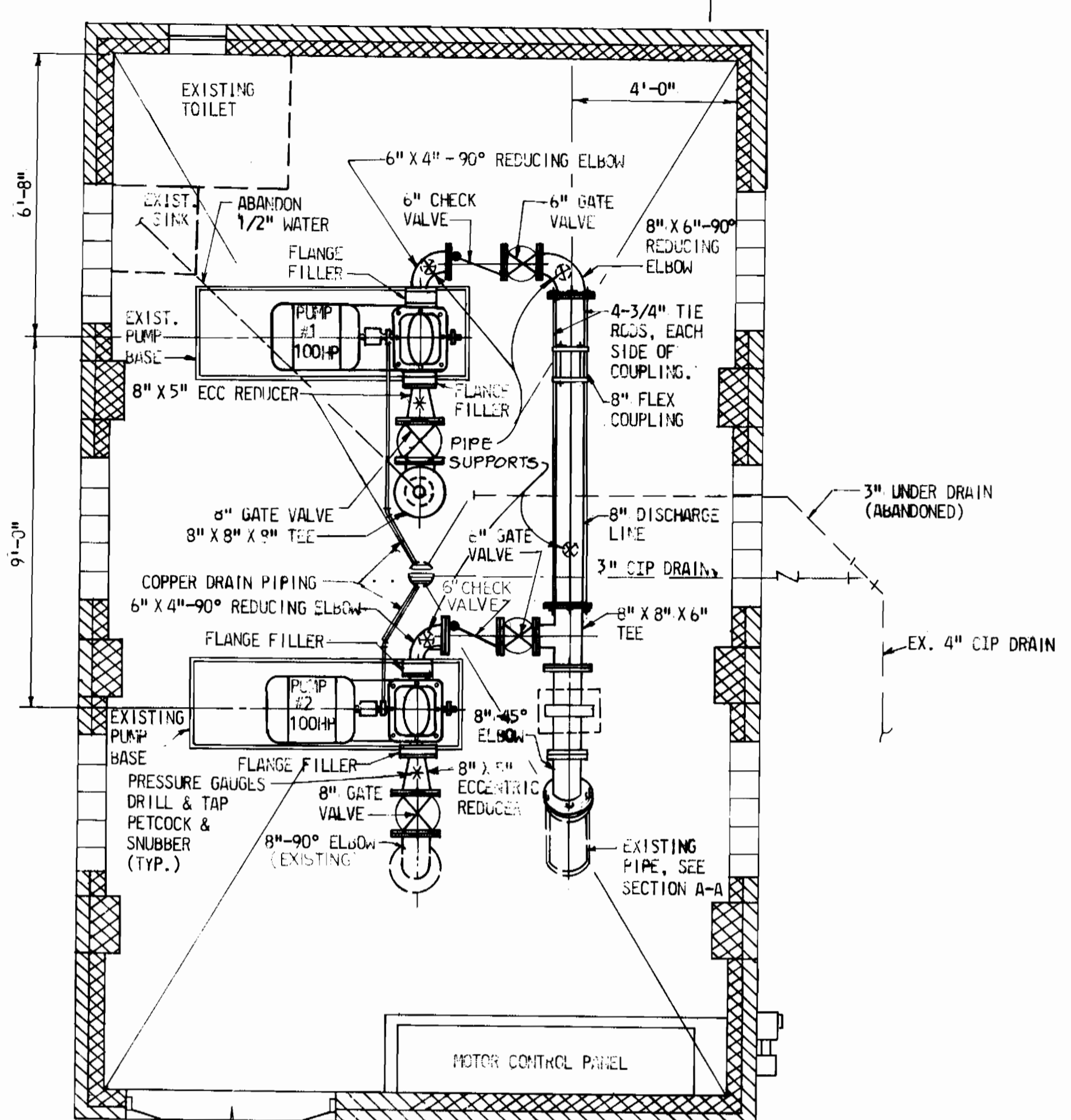
1 / W - 066
SW

WS 970 - W / 2

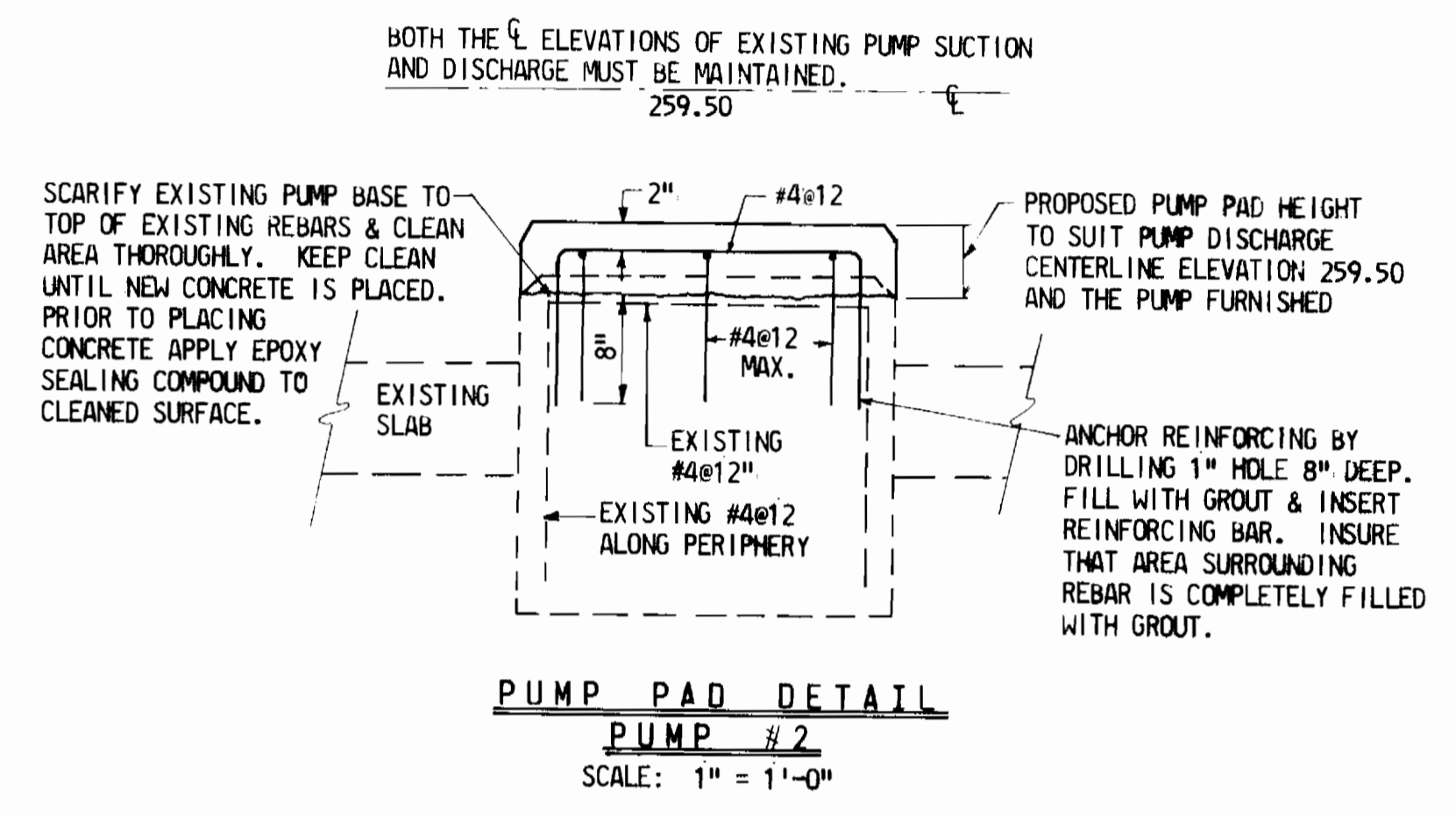
NOTE: EXISTING HYDRO-PNEUMATIC TANK LOCATED APPROXIMATELY 5 FEET WEST OF THE EXISTING STATION SHALL BE REMOVED FROM THE SITE AND DISPOSED OF BY THE CONTRACTOR.



EXISTING & DEMOLITION PLAN AT PUMP STATION
SCALE: 3/8" = 1'-0"



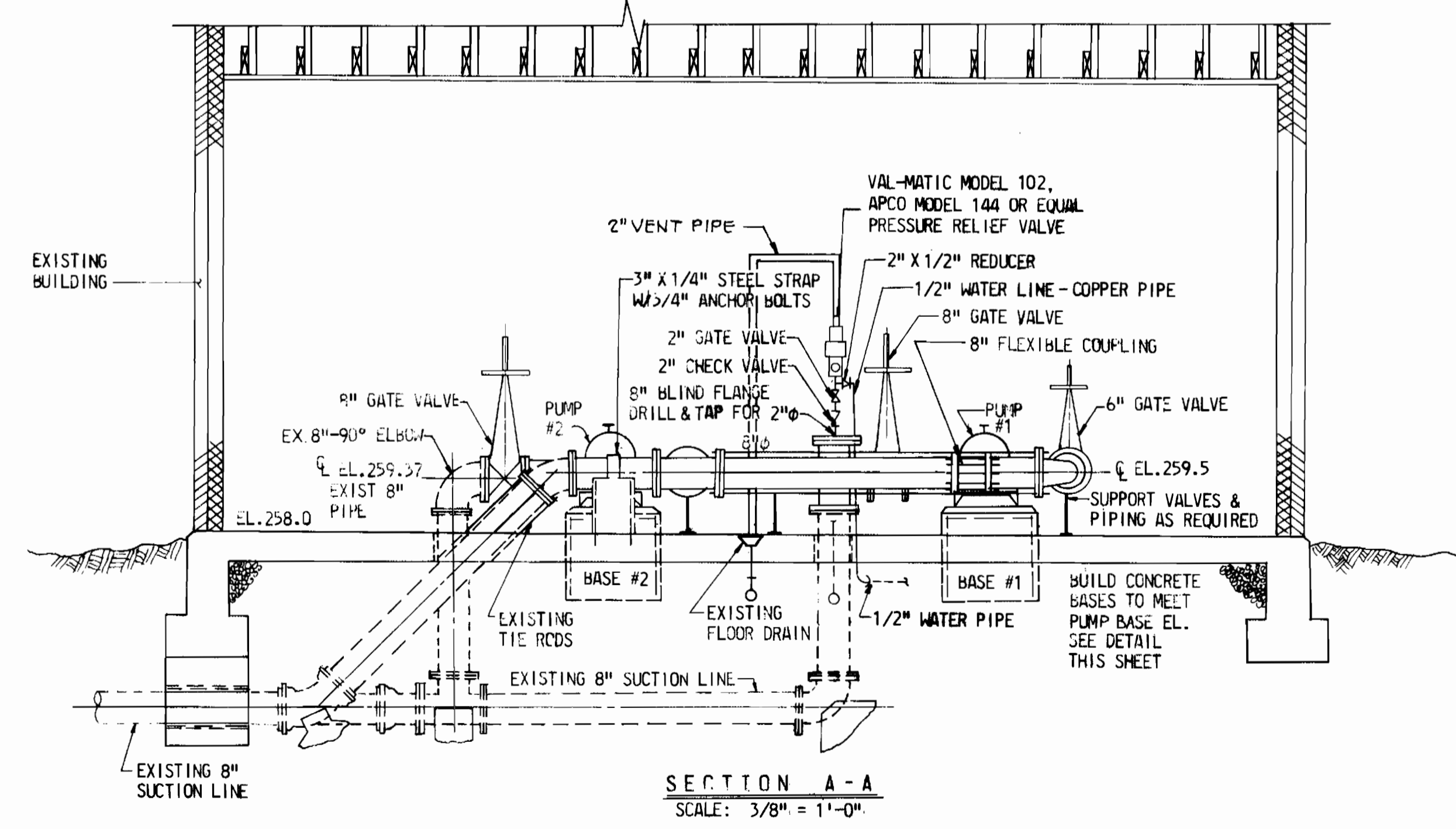
PLAN AT PROPOSED PUMP STATION
SCALE: 3/8" = 1'-0"



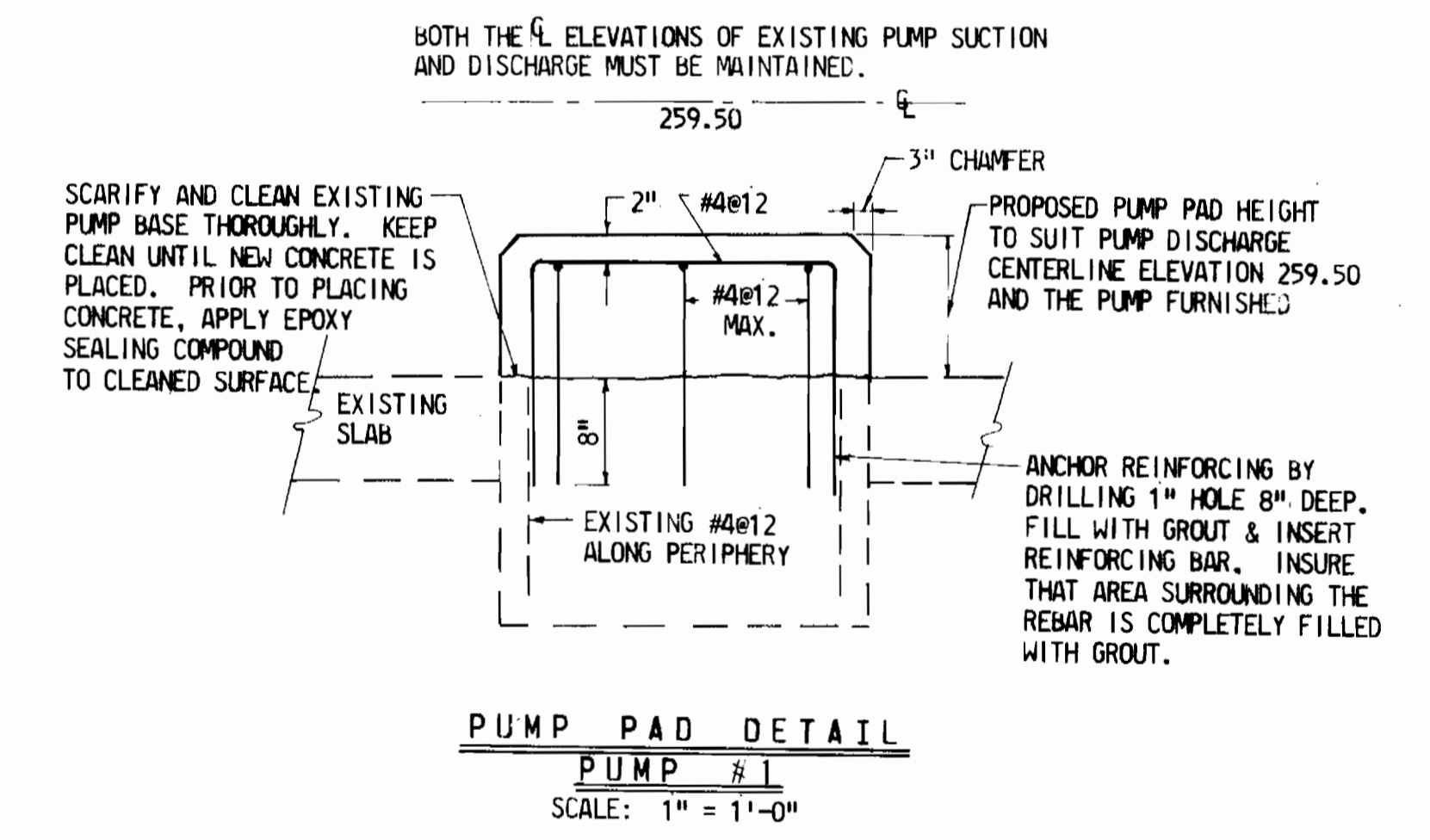
PUMP PAD DETAIL
PUMP #2
SCALE: 1" = 1'-0"

GENERAL NOTES

- CONTRACTOR - NOTIFY "MISS UTILITY" AT 559-0100 AT LEAST 3 DAY IN ADVANCE OF CONSTRUCTION.
- ALL WORK TO BE DONE IN ACCORDANCE WITH THE HOWARD COUNTY STANDARD SPECIFICATIONS FOR CONSTRUCTION AND THE HOWARD COUNTY STANDARD DETAILS FOR CONSTRUCTION.
- CONTRACTOR - NOTIFY THE ENGINEER AND HOWARD COUNTY BUREAU OF UTILITIES AT LEAST 3 DAYS BEFORE EXISTING PUMP STATION IS DISMANTLED.
- ALL EQUIPMENT, PUMP, ETC. TO BE REMOVED ARE INDICATED BY . . . ALL REMOVED EQUIPMENT IS THE PROPERTY OF HOWARD COUNTY. DEMOLITION WORK SHALL BE PERFORMED BY UNBOLTING FLANGES AND ANCHOR BOLTS AND REMOVING EACH PIECE OF EQUIPMENT, PIPE OR VALVES IN ONE PIECE. UNLESS DIRECTED BY THE ENGINEER, THE CONTRACTOR SHALL NOT CUT ANY PIPES OR VALVES. ALL EQUIPMENT REMOVED SHALL BE DELIVERED TO THE BUREAU OF UTILITIES.
- ANY EXTERIOR DISTURBED AREAS NOT PAVED SHALL BE FINE GRADED, TOPSOILED, SEEDED AND MULCHED. ALL DISTURBED AREAS SHALL BE RETURNED TO THEIR ORIGINAL CONDITION.
- CONCRETE AND REINFORCING SHALL CONFORM TO THE HOWARD COUNTY STANDARD SPECIFICATION. ALL CONCRETE SHALL BE STATE HIGHWAY ADMINISTRATION MIX NO. 3, 3500 P.S.I..
- CONTRACTOR - NOTIFY BUREAU OF UTILITIES AT 992-2366 AT LEAST 5 DAYS IN ADVANCE OF CONSTRUCTION.
- APPROXIMATE LOCATION OF EXISTING MAINS ARE SHOWN. THE CONTRACTOR SHALL TAKE ALL NECESSARY PRECAUTIONS TO PROTECT EXISTING MAINS AND SERVICES AND MAINTAIN UNINTERRUPTED SUPPLY. ANY DAMAGE INCURRED SHALL BE REPAIRED IMMEDIATELY TO THE SATISFACTION OF THE ENGINEER, AT THE CONTRACTOR'S EXPENSE.
- ALL HORIZONTAL CONTROLS ARE BASED ON MARYLAND STATE COORDINATES.
- ALL VERTICAL CONTROLS ARE BASED ON U.S.G.S. DATUM.
- ALL PIPE ELEVATIONS SHOWN ARE INVERT ELEVATIONS UNLESS OTHERWISE NOTED.
- CONTRACTOR SHALL LOCATE EXISTING UTILITIES A MINIMUM OF TWO (2) WEEKS IN ADVANCE OF CONSTRUCTION OPERATIONS IN THE VICINITY OF PROPOSED UTILITIES AT HIS OWN EXPENSE.
- ALL WATER MAINS TO BE C.I.P. OR D.I.P. UNLESS OTHERWISE NOTED.
- THE CONTRACTOR SHALL NOT OPERATE ANY WATER MAIN VALVES ON THE EXISTING SYSTEM.



SECTION A-A
SCALE: 3/8" = 1'-0"



PUMP PAD DETAIL
PUMP #1
SCALE: 1" = 1'-0"

RECORDED
BY
FEB 9 1983

ROUTE 32 WATER PUMPING STATION MODIFICATIONS ELECTION DISTRICT : 6

DES: LCH
DWN: RW
CHKD: TFM

DATE: JULY, 1981

KIDDE CONSULTANTS, INC.
ENGINEERS • ARCHITECTS • PLANNERS
BALTIMORE, MARYLAND

DEPARTMENT OF PUBLIC WORKS
HOWARD COUNTY, MARYLAND

1-18-82
1/18/82

1-18-82
1/18/82

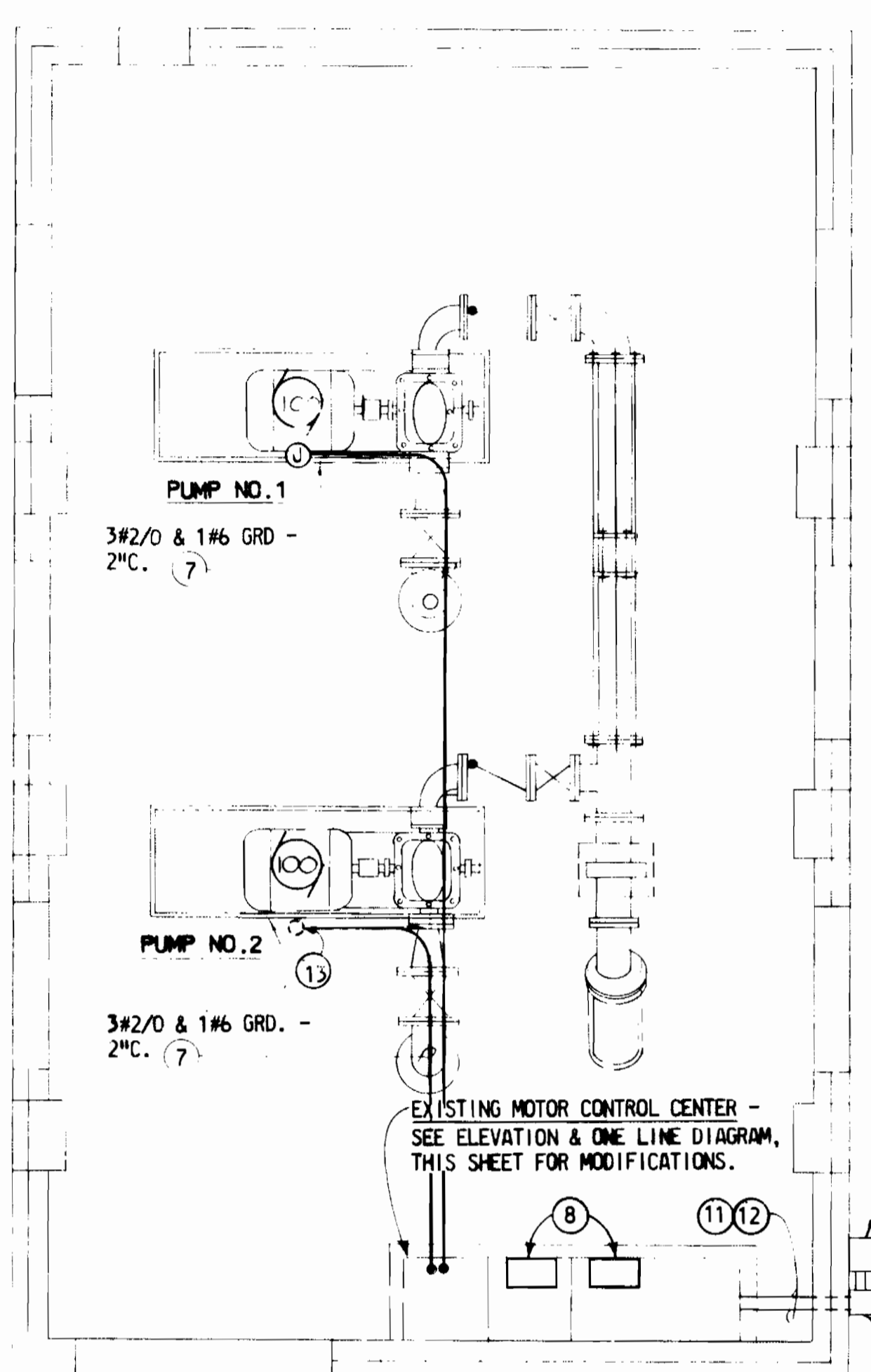
CAPITAL PROJECT NO. W-7-8093
CONTRACT NO. 44-0970

MECHANICAL DETAILS

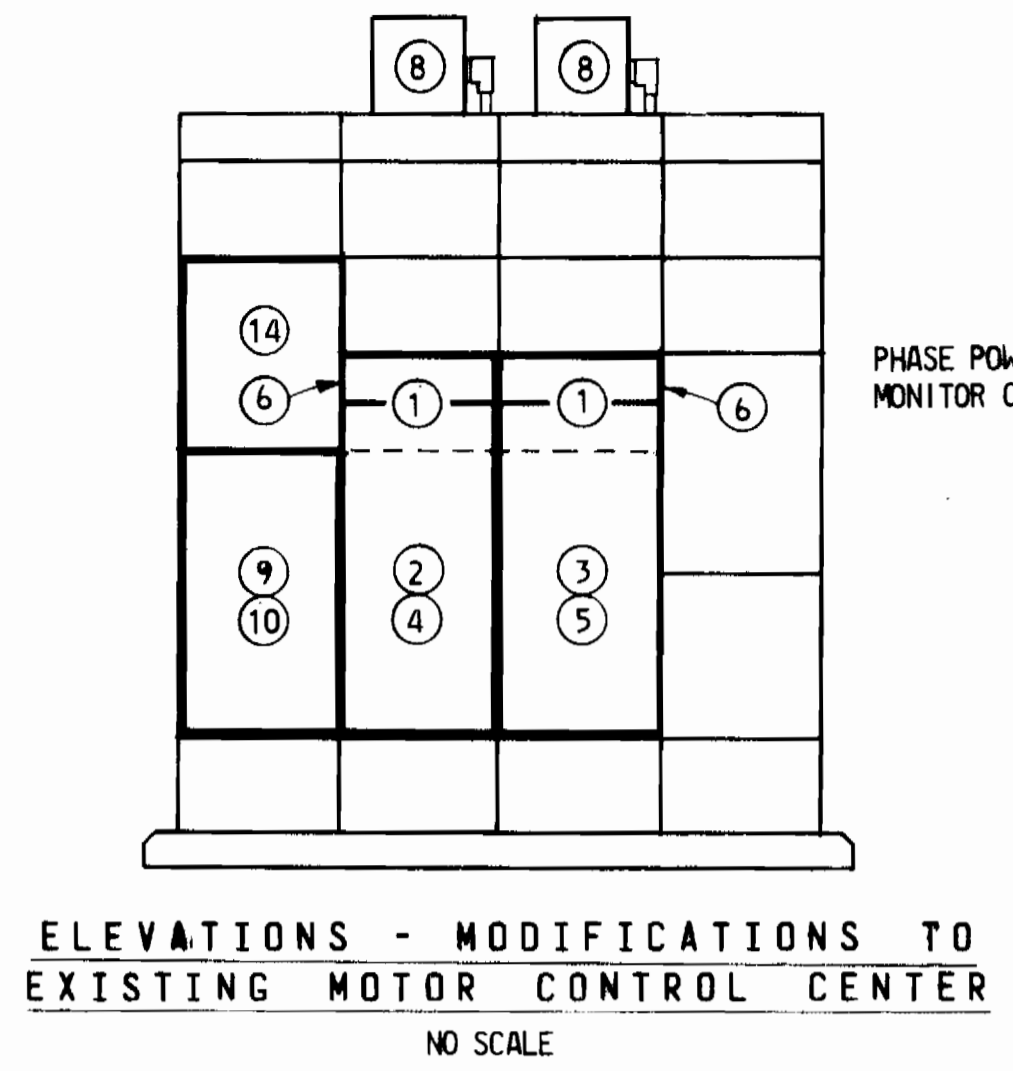
DRAWING NO. 2 OF 3
SCALE AS SHOWN

DRAWING NOTES

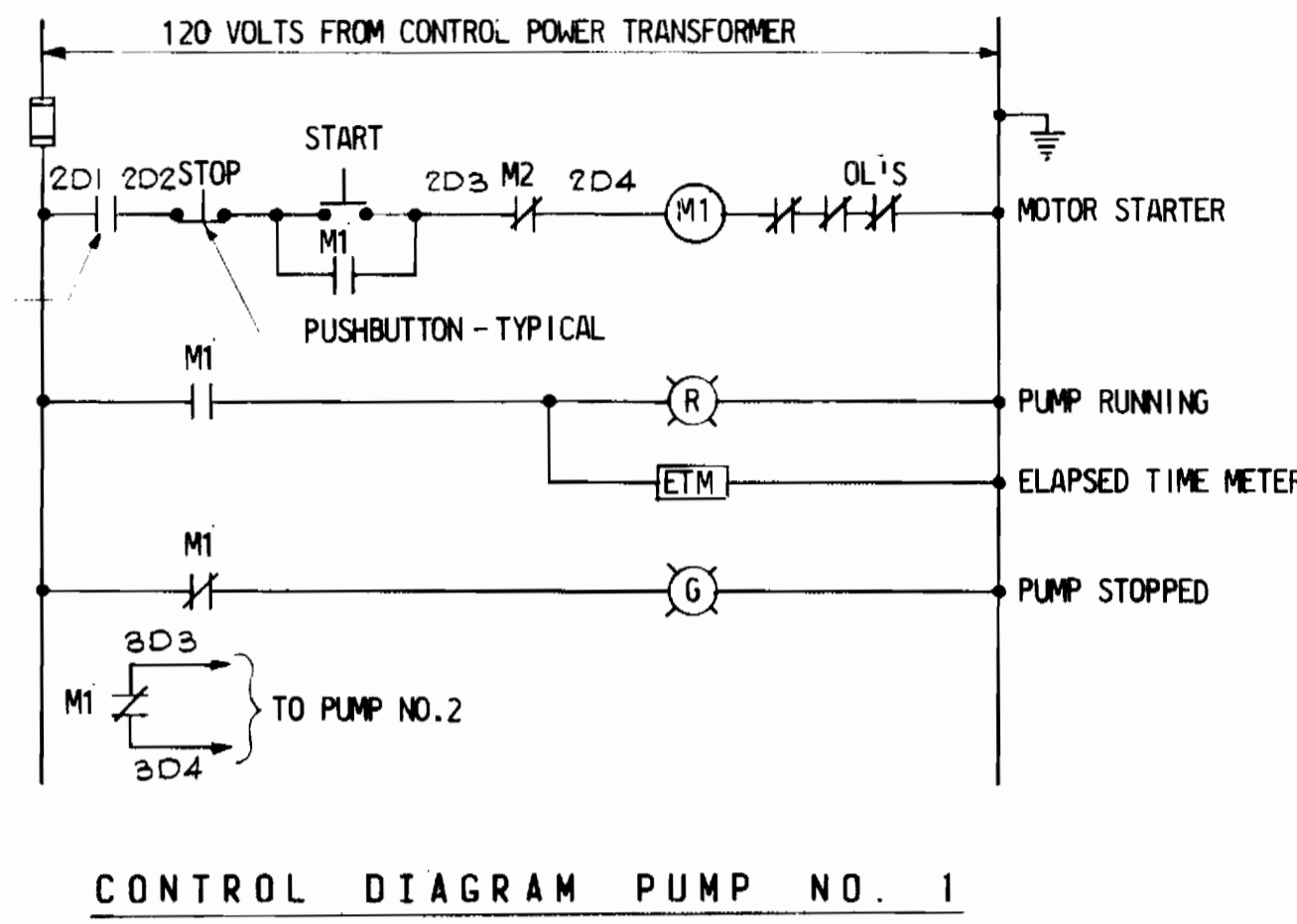
- ① DISCONNECT AND REMOVE EXISTING SPARE MOTOR STARTER AND TURN-OVER TO HOWARD COUNTY.
- ② DISCONNECT AND REMOVE EXISTING PUMP NO. 1 MOTOR STARTER AND TURN-OVER TO HOWARD COUNTY.
- ③ DISCONNECT AND REMOVE EXISTING PUMP NO. 2 MOTOR STARTER AND TURN-OVER TO HOWARD COUNTY. DISCONNECT AND REMOVE ALL EXISTING WIRING FEEDING EXISTING PUMP NO. 2.
- ④ FURNISH AND INSTALL A NEW NEMA SIZE 4 FULL VOLTAGE, NON-REVERSING MOTOR STARTER IN THE EXISTING MOTOR CONTROL CENTER FOR NEW PUMP NO. 1. FURNISH AND INSTALL A NEW NAMEPLATE ON THE NEW MOTOR STARTER. THE NEW NAMEPLATE SHALL MATCH THE EXISTING NAMEPLATES AND READ AS FOLLOWS: PUMP NO. 1.
- ⑤ FURNISH AND INSTALL A NEW NEMA SIZE 4 FULL VOLTAGE, NON-REVERSING MOTOR STARTER IN THE EXISTING MOTOR CONTROL CENTER FOR NEW PUMP NO. 2. FURNISH AND INSTALL A NEW NAMEPLATE ON THE NEW MOTOR STARTER. THE NEW NAMEPLATE SHALL MATCH THE EXISTING NAMEPLATES AND READ AS FOLLOWS: PUMP NO. 2.
- ⑥ FURNISH AND INSTALL A NEW BLANK, HINGED CUBICLE COVER PLATE. FURNISH AND INSTALL A NEW NAMEPLATE ON THE CUBICLE COVER. THE NEW NAMEPLATE SHALL MATCH THE EXISTING NAMEPLATES AND READ AS FOLLOWS: SPACE AND BUS.
- ⑦ SURFACE RUN NEW CONDUIT ON CEILING
- ⑧ POWER FACTOR CORRECTION CAPACITORS, SURFACE MOUNT ON TOP OF EXISTING MOTOR CONTROL CENTER.
- ⑨ DISCONNECT AND REMOVE EXISTING 400 AMPERE FRAME, 250 AMPERE TRIP MAIN CIRCUIT BREAKER AND TURN-OVER TO HOWARD COUNTY.
- ⑩ FURNISH AND INSTALL A NEW 400 AMPERE, 300 AMPERE TRIP MAIN CIRCUIT BREAKER IN THE EXISTING MOTOR CONTROL CENTER.
- ⑪ DISCONNECT AND REMOVE EXISTING #4/0 & 1#2 GROUND AND 2 1/2" CONDUIT FROM THE EXISTING METERING EQUIPMENT TO THE EXISTING MAIN CIRCUIT BREAKER.
- ⑫ FURNISH AND INSTALL NEW #350 MCM & 1#2 GROUND IN 2 1/2" CONDUIT AND CONNECT TO EXISTING METERING EQUIPMENT AND TO THE NEW MAIN CIRCUIT BREAKER.
- ⑬ CUT EXISTING CONDUIT FLUSH WITH FLOOR AND FILL WITH GROUT.
- ⑭ INSTALL PHASE POWER MONITOR UNIT IN METER CUBICLE OF MOTOR CONTROL CENTER.



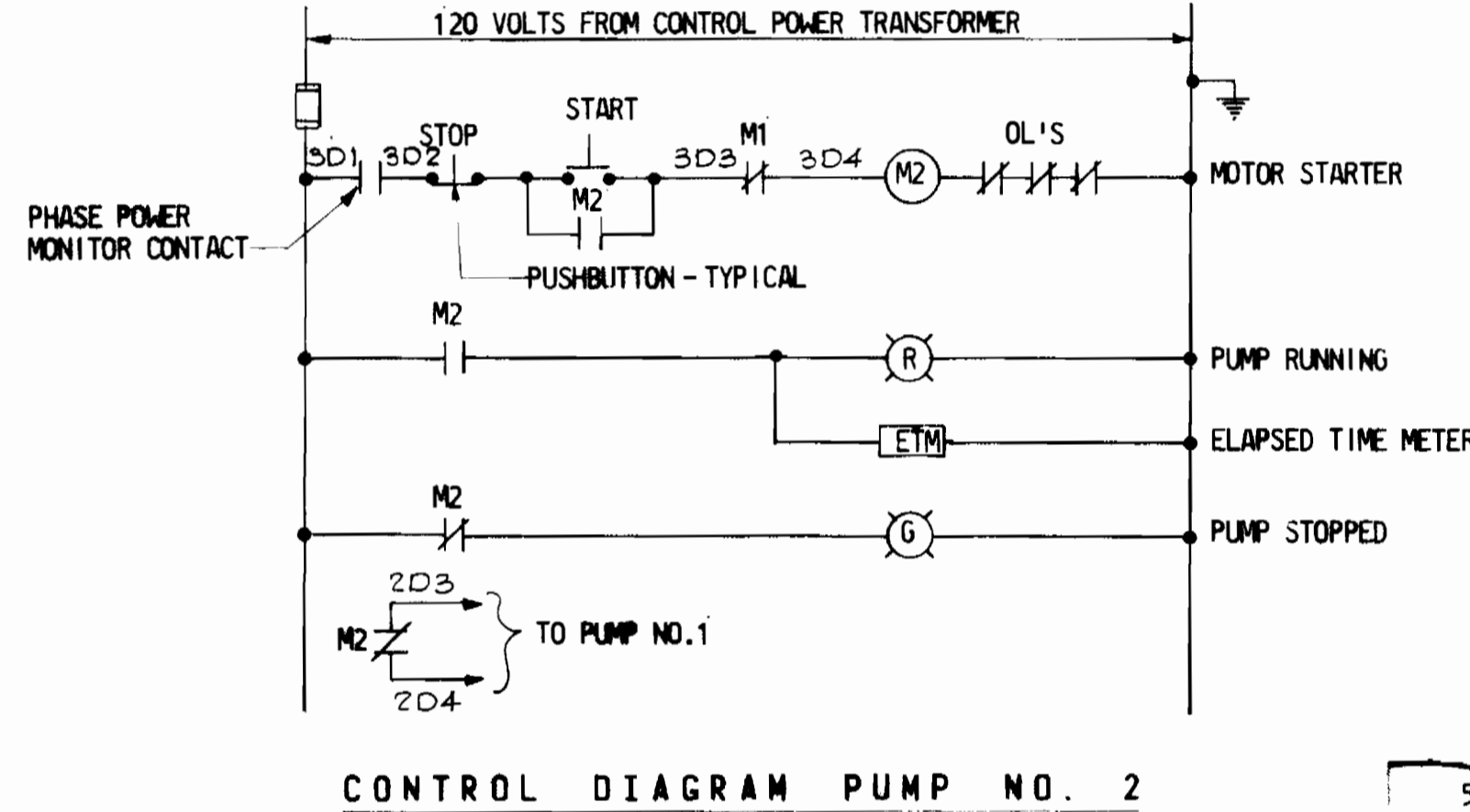
PLAN - PUMPING STATION
SCALE: 3/8" = 1'-0"



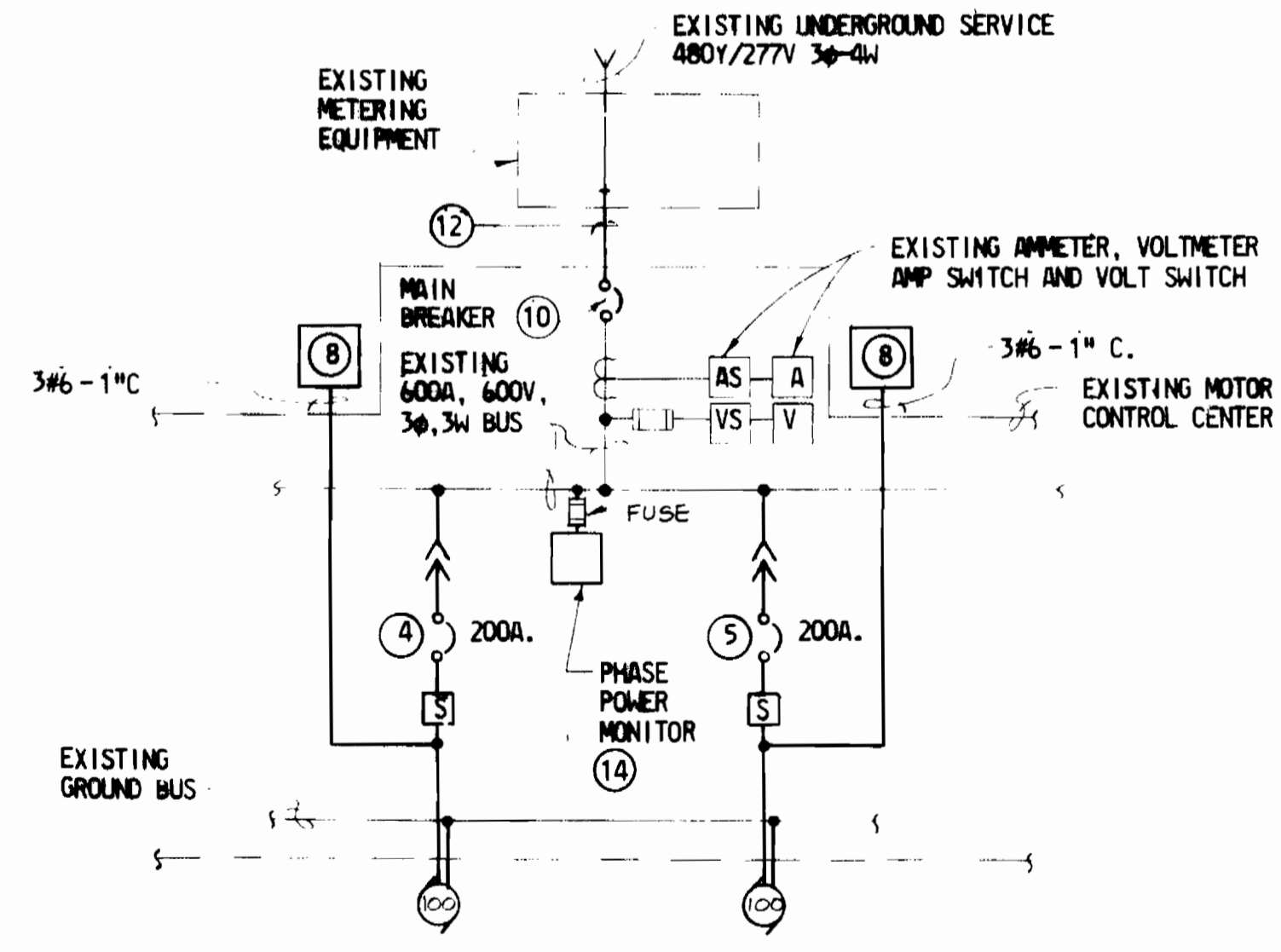
ELEVATIONS - MODIFICATIONS TO EXISTING MOTOR CONTROL CENTER
NO SCALE



CONTROL DIAGRAM PUMP NO. 1

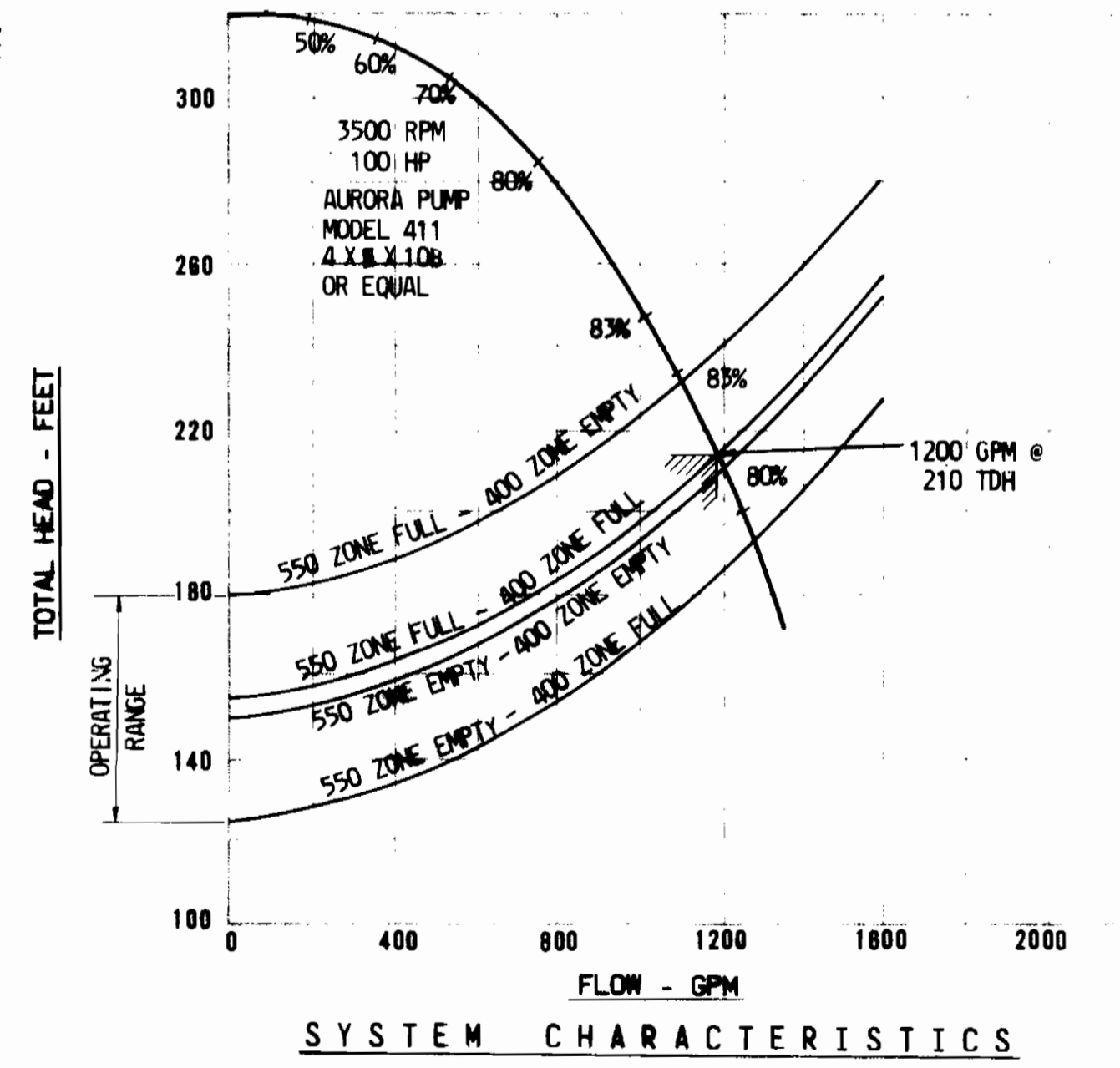


CONTROL DIAGRAM PUMP NO. 2



ONE LINE DIAGRAM - MODIFICATIONS TO EXISTING MOTOR CONTROL CENTER
NO SCALE

- ELECTRICAL LEGEND**
- MOLDDED CASE CIRCUIT BREAKER
 - (S) MAGNETIC STARTER - FULL VOLTAGE
 - (100) MOTOR - HORSEPOWER AS INDICATED
 - (8) SEE NOTE OF SAME NUMBER
 - (J) JUNCTION BOX
 - (R) RED INDICATING LIGHT
 - (G) GREEN INDICATING LIGHT
 - CONDUIT ON CEILING OR WALLS
 - FUSE
 - CURRENT TRANSFORMER
 - C. CONDUIT
 - GRD. GROUND
 - (A), (AS) AMMETER, AMMETER SWITCH
 - (V), (VS) VOLTMETER, VOLTMETER SWITCH



RECORD DRAWING
BY
KIDDE CONSULTANTS, INC.
DATE: FEB 8, 1983



ROUTE 32 WATER PUMPING STATION MODIFICATIONS ELECTION DISTRICT : 6

KIDDE CONSULTANTS, INC.
ENGINEERS • ARCHITECTS • PLANNERS
BALTIMORE, MARYLAND

DEPARTMENT OF PUBLIC WORKS
HOWARD COUNTY, MARYLAND
1-18-82
DIRECTOR DEPARTMENT OF PUBLIC WORKS DATE: 1/18/82
CHIEF BUREAU OF ENGINEERING DATE: 1/18/82

Robert M. Bevington 1-18-82
CHIEF, BUREAU OF UTILITIES DATE: 1/18/82
Allen J. Brown DATE: 1/18/82
CHIEF, UTILITY DIVISION

CAPITAL PROJECT NO. W-7-8093
CONTRACT NO. 44-0970

ELECTRICAL DETAILS

DRAWING NO. 3 OF 3
SCALE AS NOTED
DES: J.P.S.
DWN: M.A.R.
CHKD: C.E.C.

DATE: JULY, 1981