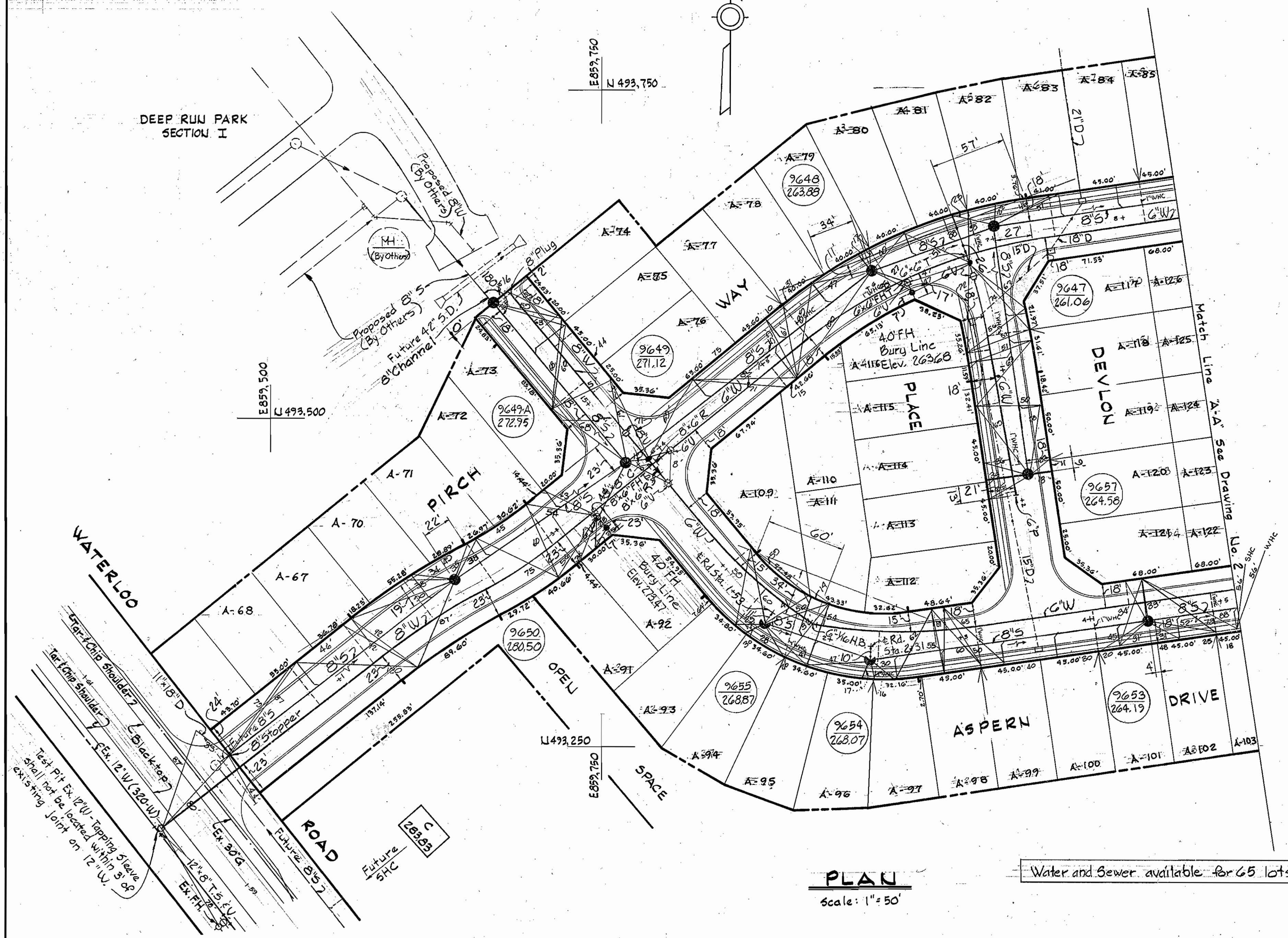


BENCH MARKS

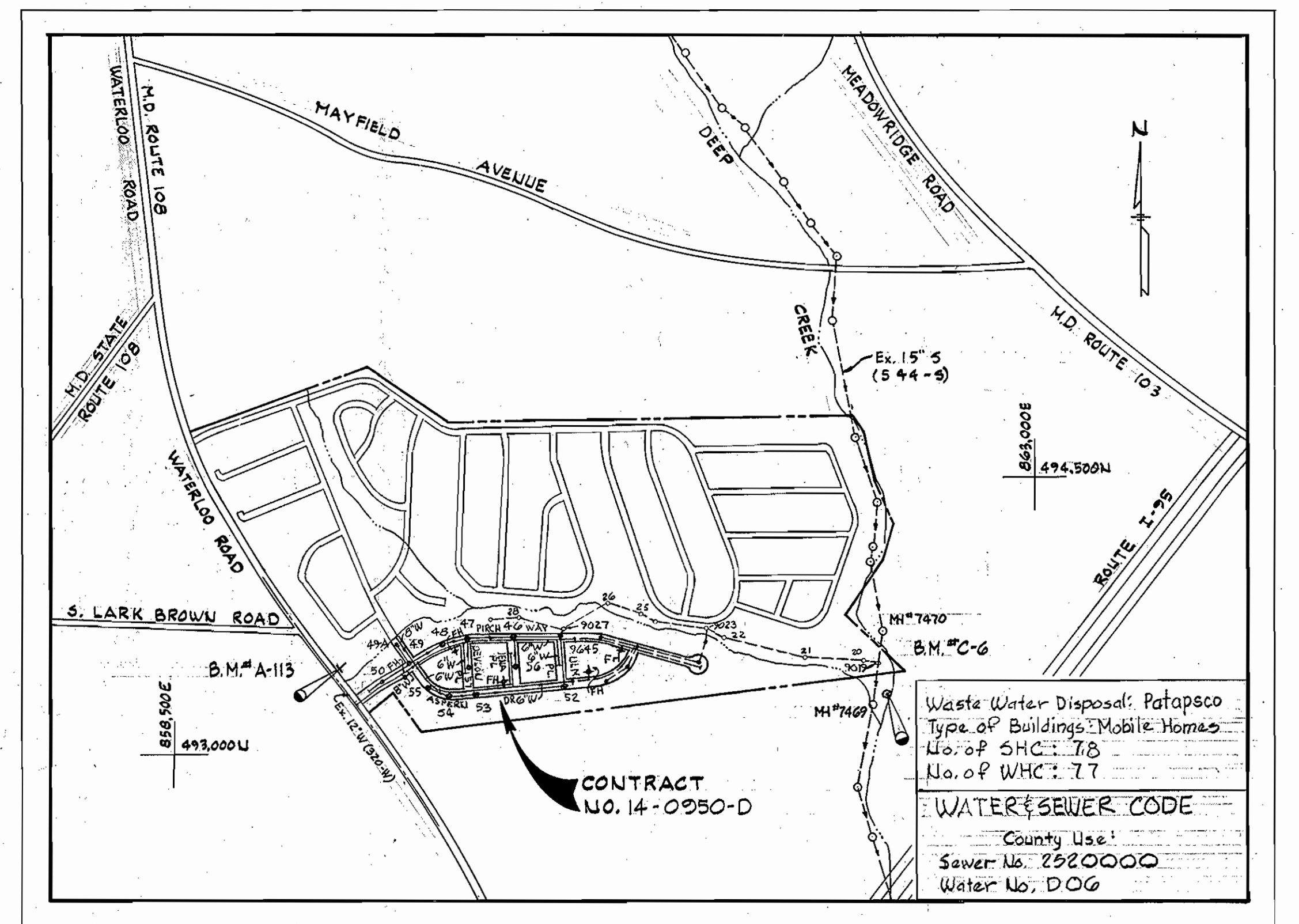
W.R. (A.B.M. #C-6 Elev. 209.54
 R.R. Spike in 8' Cherry, 32' N. of
 MH#7469 to MH#7470. 150' East.
 MAPS B.M. #A-113 Elev. 290.19
 60 Penny Spike Base of Pole No.
 245473 E. side of State Rt. 108,
 300' S. of S. Lark Brown Road.

DEEP RUN PARK
 SECTION I



PLAN
 Scale: 1" = 50'

Water and Sewer available for 65 lots



VICINITY MAP
 Scale: 1" = 600'

Waste Water Disposal: Patapsco
 Type of Buildings: Mobile Homes
 No. of SHC: 78
 No. of WHC: 77
WATER & SEWER CODE
 County Use:
 Sewer No. 2520000
 Water No. 000

GENERAL NOTES

- APPROXIMATE LOCATION OF EXISTING MAINS ARE SHOWN. THE CONTRACTOR SHALL TAKE ALL NECESSARY PRECAUTIONS TO PROTECT EXISTING MAINS AND SERVICES AND MAINTAIN UNINTERRUPTED SUPPLY. ANY DAMAGE INCURRED SHALL BE REPAIRED IMMEDIATELY.
- ALL PIPE ELEVATIONS SHOWN ARE INVERT ELEVATIONS.
- THE CONTRACTOR SHALL LOCATE EXISTING UTILITIES A MINIMUM OF TWO WEEKS IN ADVANCE OF CONSTRUCTION OPERATIONS IN VICINITY OF UTILITIES.
- THE CONTRACTOR SHALL NOTIFY THE FOLLOWING UTILITIES OR AGENCIES AT LEAST FIVE DAYS BEFORE STARTING WORK SHOWN ON THESE PLANS:
 BALTIMORE GAS AND ELECTRIC COMPANY - UNDERGROUND ELECTRIC DISTRIBUTION ENGINEERING DAMAGE CONTROL 234-5691
 UNDERGROUND GAS DISTRIBUTION ENGINEERING 234-5621
 CHESAPEAKE AND POTOMAC TELEPHONE COMPANY 393-3648.
 MISS UTILITY - 1 - 559-0100.
- FOR ALL STANDARD DETAILS SEE STANDARDS BOUND IN SPECIFICATIONS.
- ALL HORIZONTAL AND VERTICAL CONTROLS ARE BASED ON MARYLAND STATE DATUM.
- CLEAR ALL UTILITIES BY A MINIMUM OF 6".
- BLOCK ALL FITTINGS WITH CONCRETE, SEE STANDARDS BOUND IN SPECIFICATIONS.
- ALL WATER MAINS SHALL HAVE A MINIMUM OF 3 1/2' COVER.
- ALL WATER MAINS SHALL BE C.I.P. OR D.I.P. UNLESS OTHERWISE NOTED.
- ALL VALVES SHALL BE STRAPPED TO TEES WHERE APPLICABLE IN ACCORDANCE WITH THE STANDARD DETAILS.
- ALL FIRE HYDRANTS SHALL BE STRAPPED AND BUTTRESSED IN ACCORDANCE WITH THE STANDARD DETAILS. SOIL AROUND THE HYDRANTS SHALL BE COMPACTED IN ACCORDANCE WITH SECTION 5-15 OF THE STANDARD SPECIFICATIONS.
- PAYMENTS FOR STRAPPING FIRE HYDRANTS AND VALVES WILL BE INCLUDED IN UNIT PRICE BID FOR FURNISHING AND LAYING WATER MAINS.
- BURY LINE ELEVATIONS ON FIRE HYDRANTS SHALL BE SET TO THE ELEVATIONS SHOWN ON THE DRAWINGS.
- ALL W.H.C.'S. SHALL BE 3/4" DIAMETER UNLESS OTHERWISE NOTED.
- WATER SERVICES SHALL BE FOR INSIDE METER SETTINGS.
- ALL SEWER MAINS SHALL BE C.S.P.X., V.C.P.X. OR A.C.P. CLASS 2400 UNLESS OTHERWISE NOTED.
- ALL MANHOLES SHALL BE 4'-0" INSIDE DIAMETER.
- THE CONTRACTOR SHALL PROVIDE A JOINT IN ALL SEWER MAINS WITHIN 2'-0" OF EXTERIOR MANHOLE WALLS.

REVIEWED FOR HOWARD SOIL CONSERVATION DISTRICT AND MEETS TECHNICAL REQUIREMENT
 Signature: *James M. Williams* DATE: 12/11/80
 U.S. SOIL CONSERVATION SERVICE

Sediment Control Measures for this Contract will be implemented in accordance with Road Construction Plans F-81209

This Development Plan is approved for Soil Erosion and Sediment Control by the Howard County Conservation District
 APPROVED: *William T. Rowe* DATE: 12-7-80
 HOWARD S.C.D.

WRA 42	Revision of lot numbers	12-17
BY NO.	REVISION	DATE

ITEM	BID	AS BUILT	MATERIAL/SUPPLIER
8" Sewer	2,720 LF	2,727	CERTAINTEED ACP 2400
Manholes	90 V.F.	94.5	ATLANTIC PRE-CAST
8" Water	640 LF	638	GRIFFEN DIP
6" Water	2,370 LF	2,375	GRIFFEN DIP
6" Sewer		1,545	CERTAINTEED ACP 2400
8" Valves	2	2	AMERICAN VALVE & F.H.
6" V (Excluding F.H.)	3	3	AMERICAN VALVE & F.H.
Fire Hydrants	3	3	AMERICAN DARK LOG

DEPARTMENT OF PUBLIC WORKS
 HOWARD COUNTY, MARYLAND
 Director: *James E. Nimmer* DATE: 12-18-80
 Chief-Bureau of Engineering: *William J. Cline* DATE: 12-17-80
 Chief-Bureau of Utilities: *James L. Cline* DATE: 12/16/80
 Chief-Land Development Division: *William J. Cline* DATE: 12-17-80

WHITMAN REQUARDT AND ASSOCIATES
 ENGINEERS
 1304 ST. PAUL ST.
 BALTIMORE, MARYLAND

CONTRACT NO. 14-0950-D

PLAN OF
 WATER & SEWER DRAINS

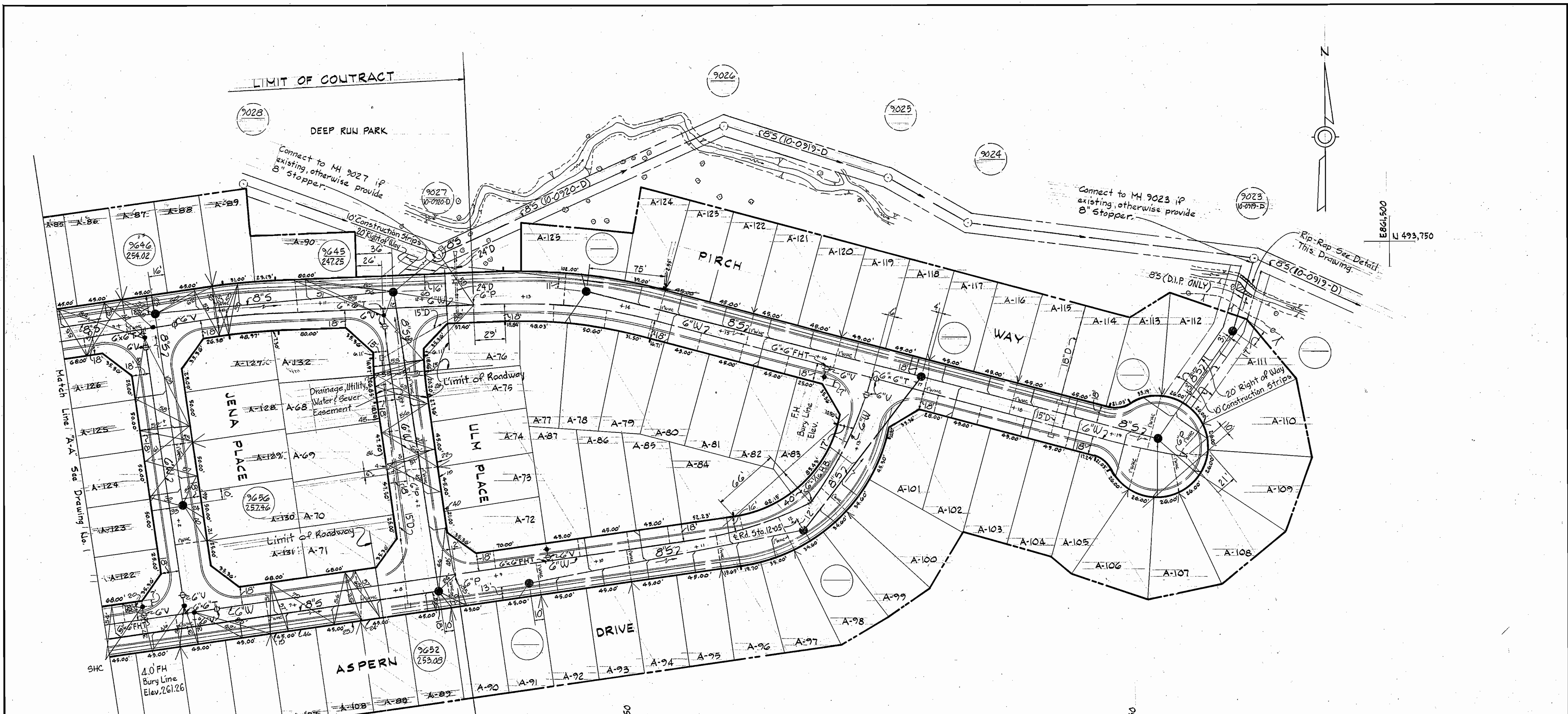
ELECTION DISTRICT
 ELKRIDGE NO. 1

DRAWING NO. 1 OF 3 AS SHOWN
 37-493-860
 37-493-861.5



Kenneth A. McCord
 Registered Engineer & Land Surveyor

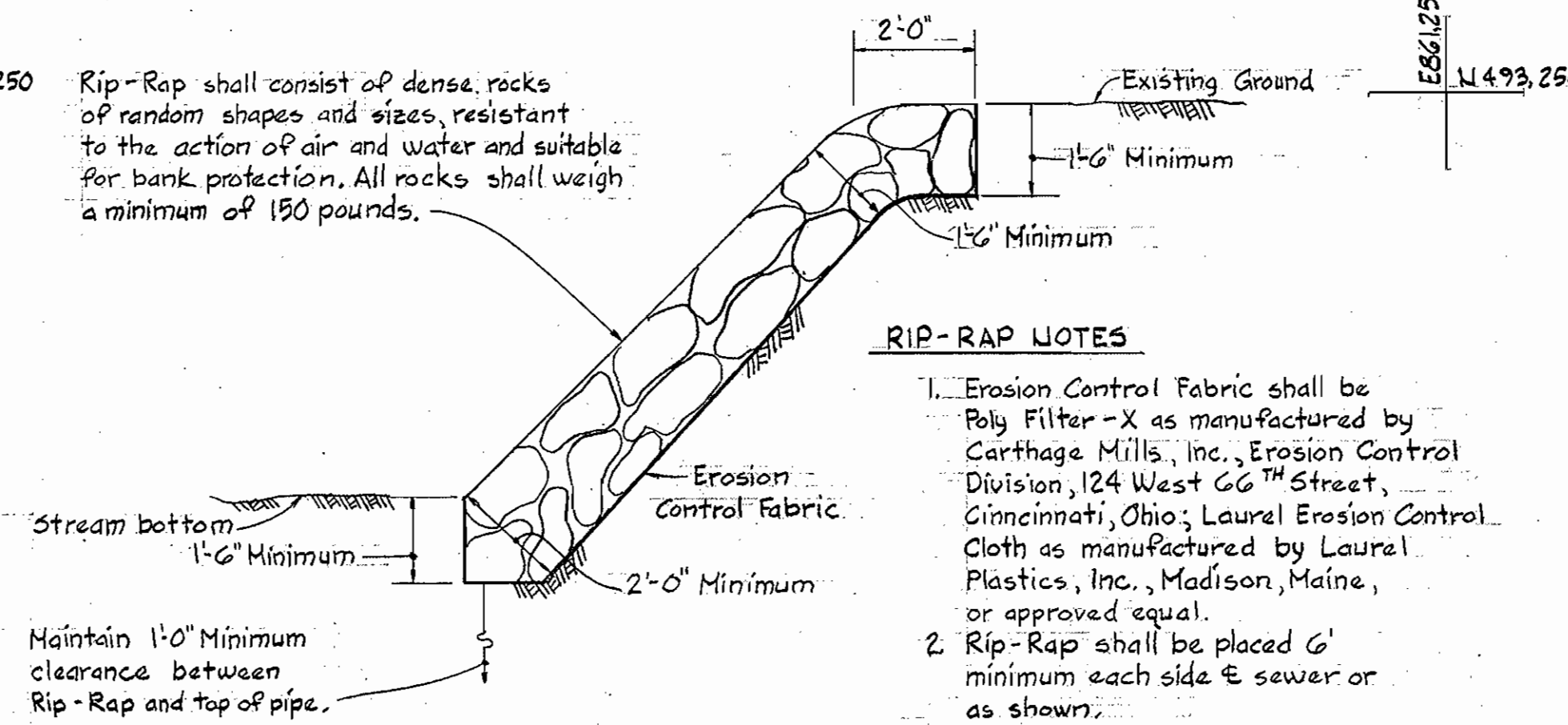
Village of Deep Run
 Section I, Part I
 Contract No. 14-0950-D



PLAN

Scale: 1" = 50'

Rip-Rap shall consist of dense rocks of random shapes and sizes, resistant to the action of air and water and suitable for bank protection. All rocks shall weigh a minimum of 150 pounds.



RIP-RAP DETAIL

Scale: 3/8" = 1'-0"

RIP-RAP NOTES

- Erosion Control Fabric shall be Poly Filter-X as manufactured by Carthage Mills, Inc., Erosion Control Division, 124 West 66th Street, Cincinnati, Ohio; Laurel Erosion Control Cloth as manufactured by Laurel Plastics, Inc., Madison, Maine, or approved equal.
- Rip-Rap shall be placed 6' minimum each side & sewer or as shown.

BY	NO.	REVISION	DATE
WRA	23	Revision of lot numbers	1-17

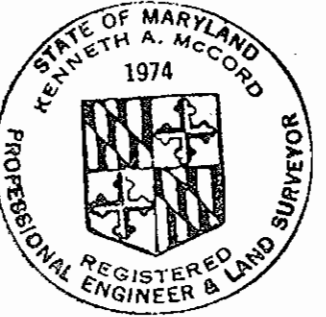
WHITMAN REQUARDT AND ASSOCIATES ENGINEERS
 1304 ST. PAUL ST.
 BALTIMORE, MARYLAND

CONTRACT NO. 14-0950-D

PLAN & DETAIL OF WATER & SEWER MAINS

ELECTION DISTRICT ELKRIDGE NO. 1

DRAWING NO. 2 OF 3	SCALE AS SHOWN	37-493-860 37-493-861,5
--------------------	----------------	----------------------------



Kenneth A. McCord

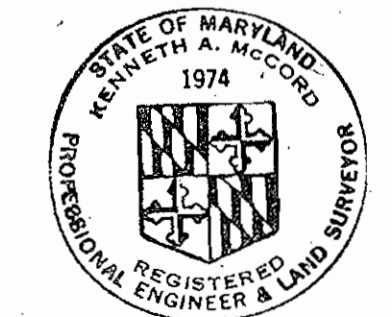
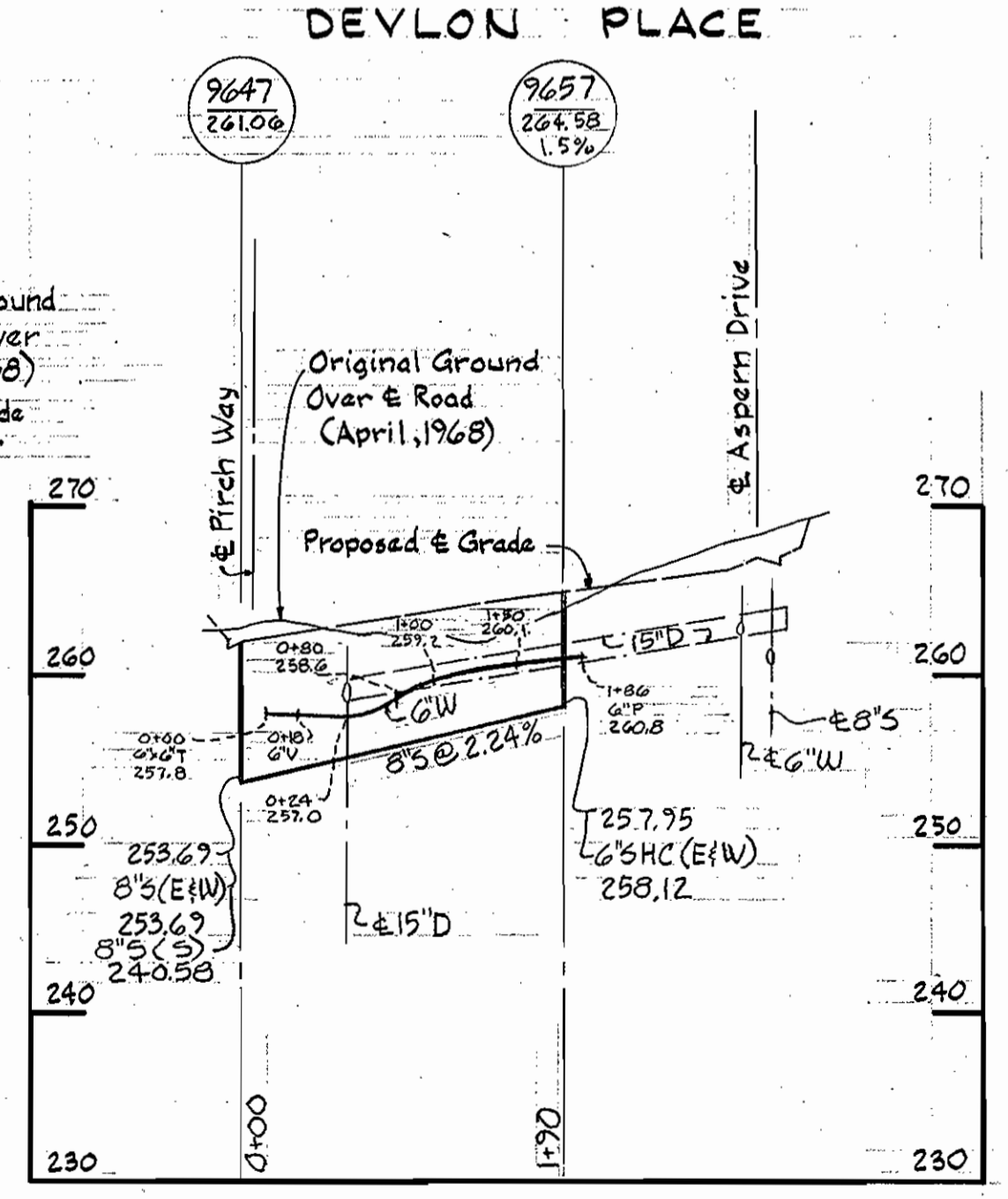
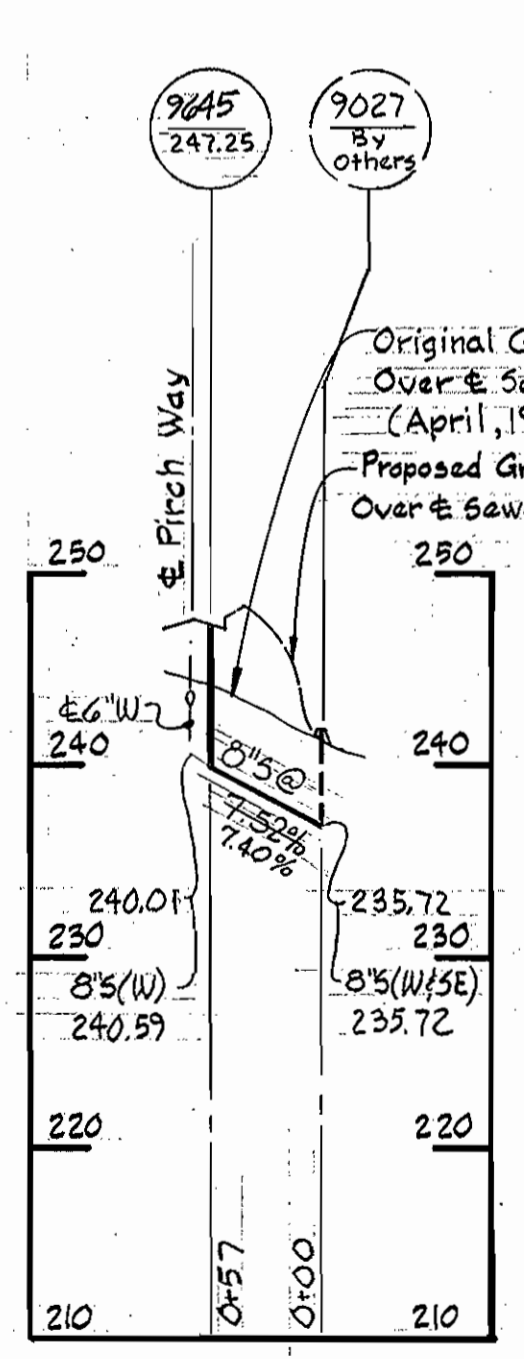
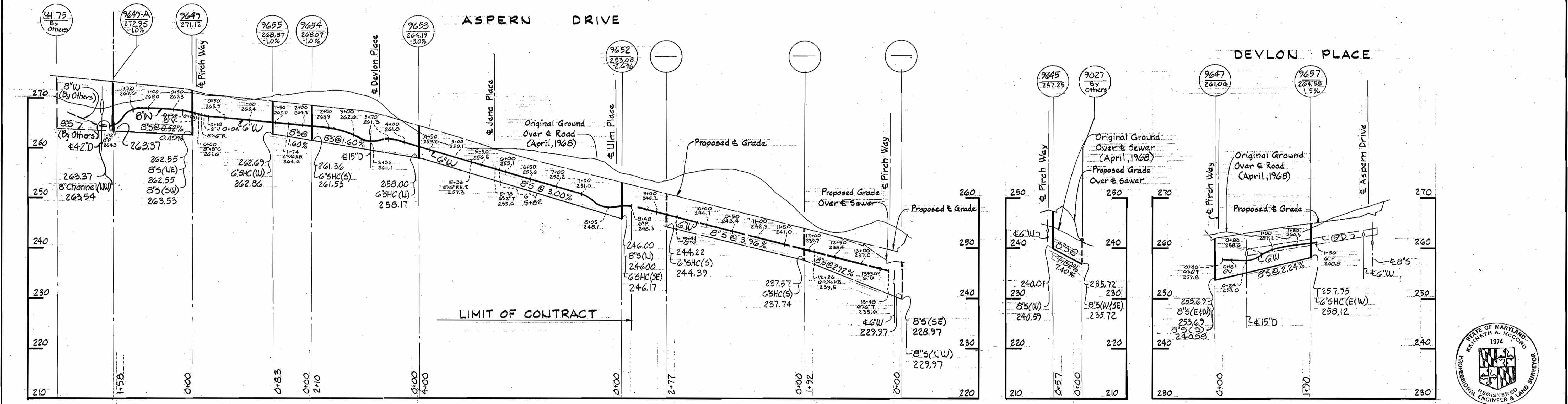
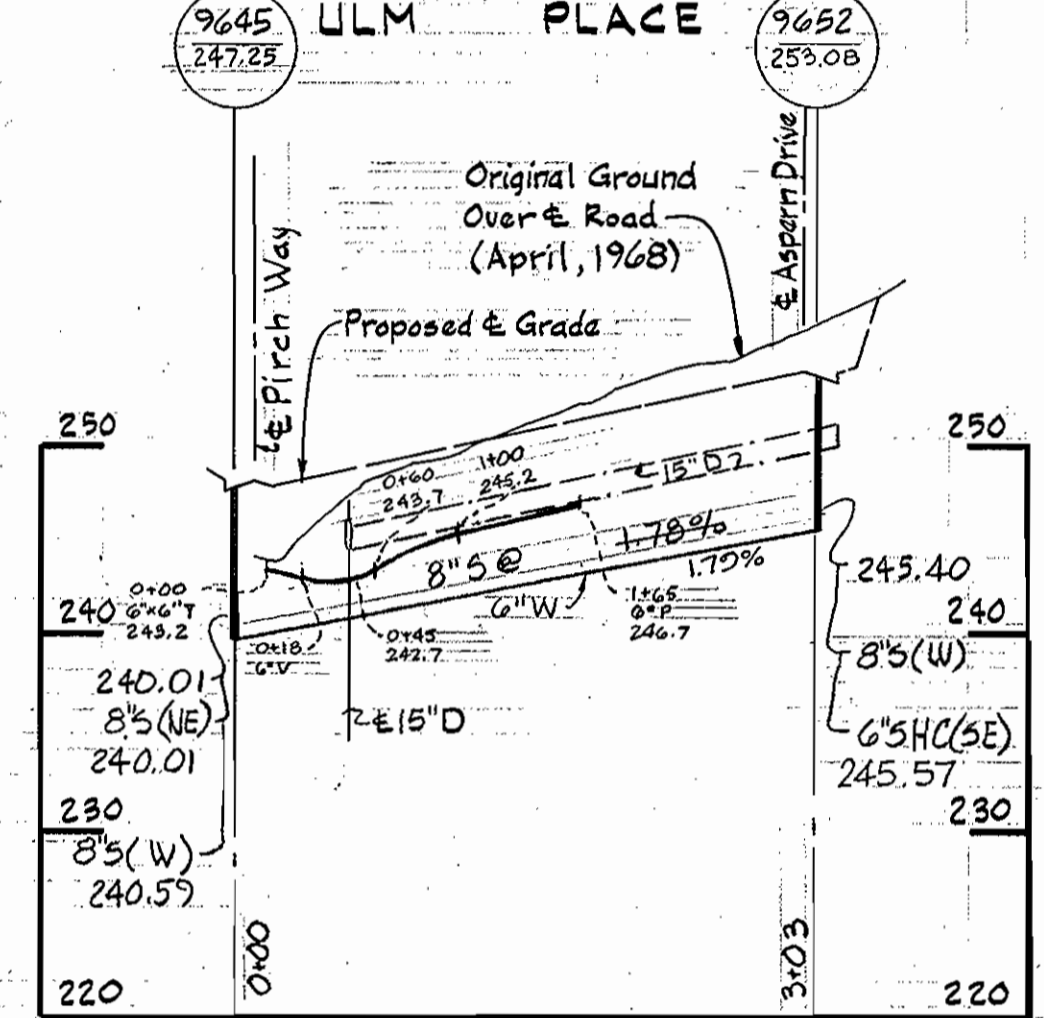
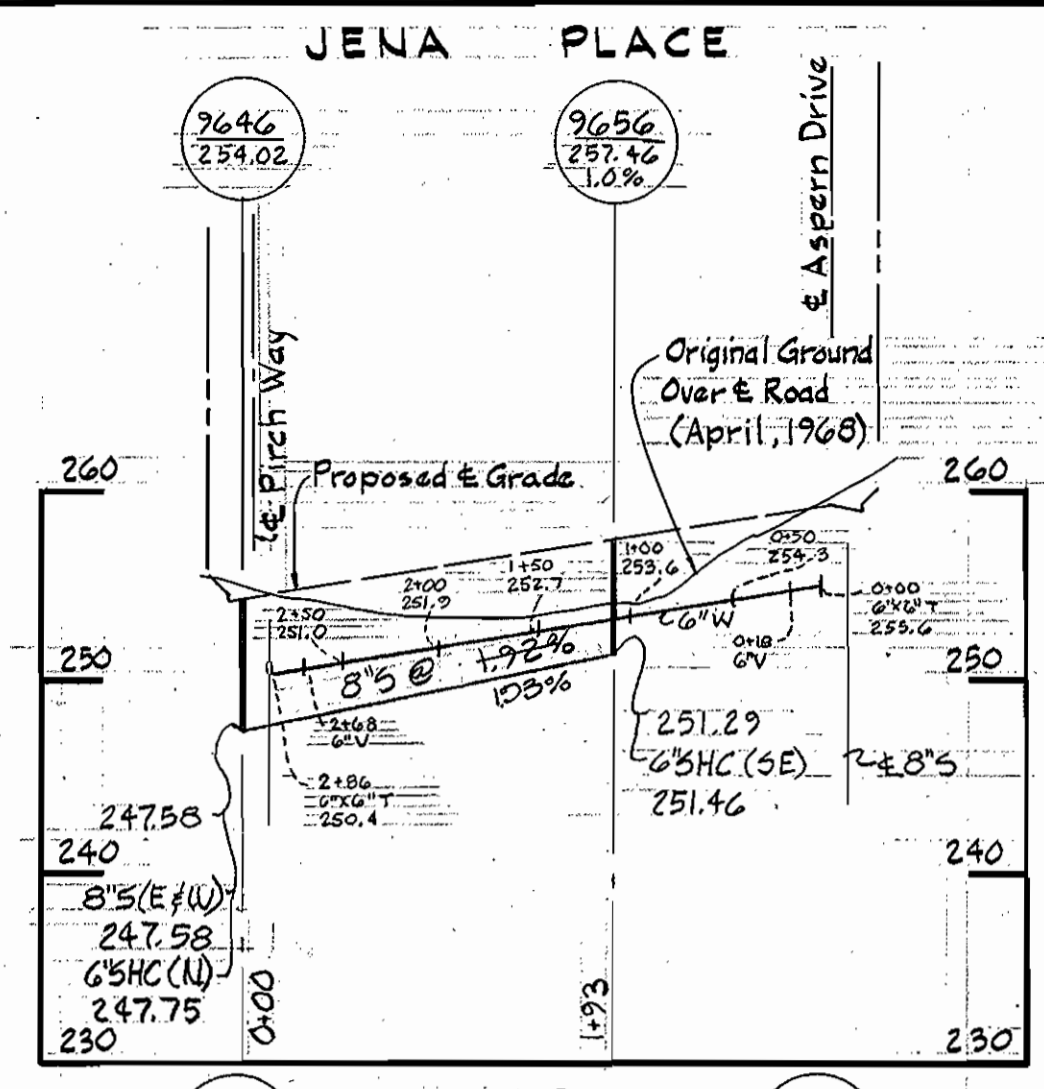
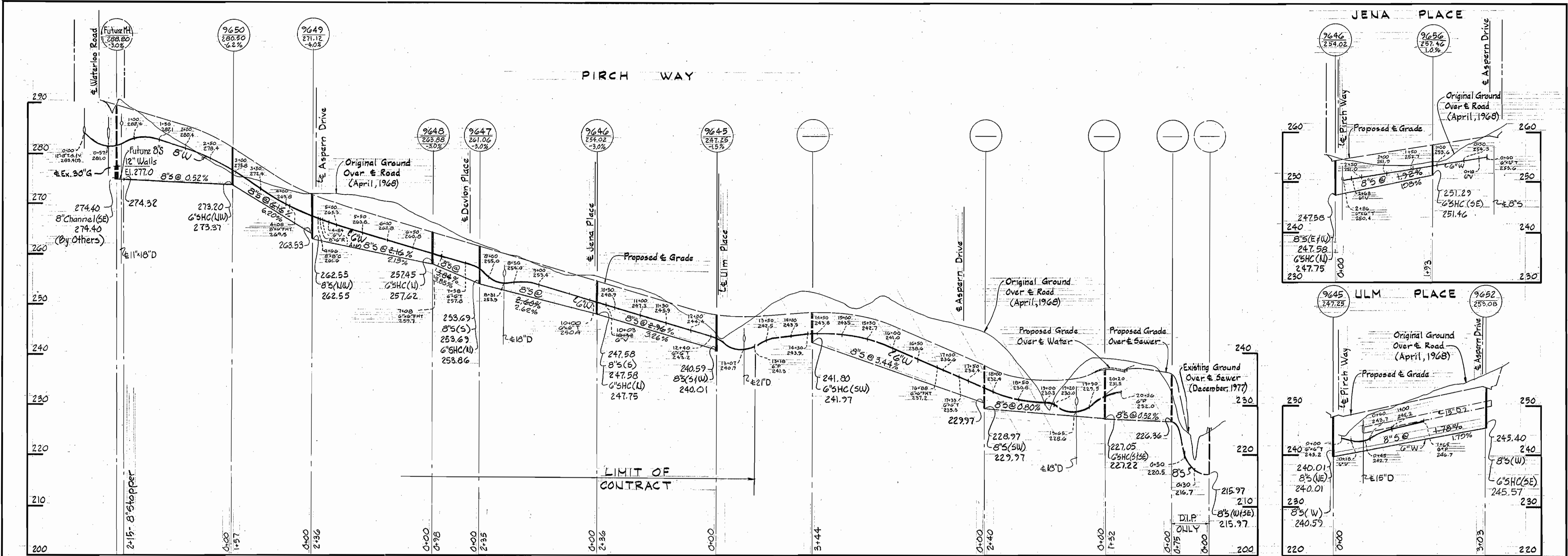
Village of Deep Run
 Section I, Part 1
 Contract No. 14-0950-D

DEPARTMENT OF PUBLIC WORKS
 HOWARD COUNTY, MARYLAND

James L. G. Lee 12/16/80
 CHIEF - BUREAU OF UTILITIES - DATE

William E. R. Ryan 12-17-80
 CHIEF - BUREAU OF ENGINEERING - DATE

Michelle L. ... 11-12-80
 CHIEF - LAND DEVELOPMENT DIVISION - DATE



DEPARTMENT OF PUBLIC WORKS
 HOWARD COUNTY, MARYLAND
 Director of Public Works: *James L. Glick* 12-18-80
 Chief - Bureau of Engineering: *James L. Glick* 12-18-80
 Chief - Bureau of Utilities: *James L. Glick* 12-18-80
 Chief - Land Development Division: *James L. Glick* 12-18-80

WHITMAN REQUARDT AND ASSOCIATES
 ENGINEERS
 1304 ST. PAUL ST.
 BALTIMORE, MARYLAND

CONTRACT NO. 14-0950-D

PROFILES OF
 WATER & SEWER MAINS

ELECTION DISTRICT
 ELKRIDGE NO. 1

Village of Deep Run
 Section I, Part 1
 Contract No. 14-0950-D
 DRAWING NO. 3 OF 3
 SCALE H: 1"=100'
 V: 1"=10'