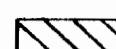
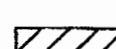
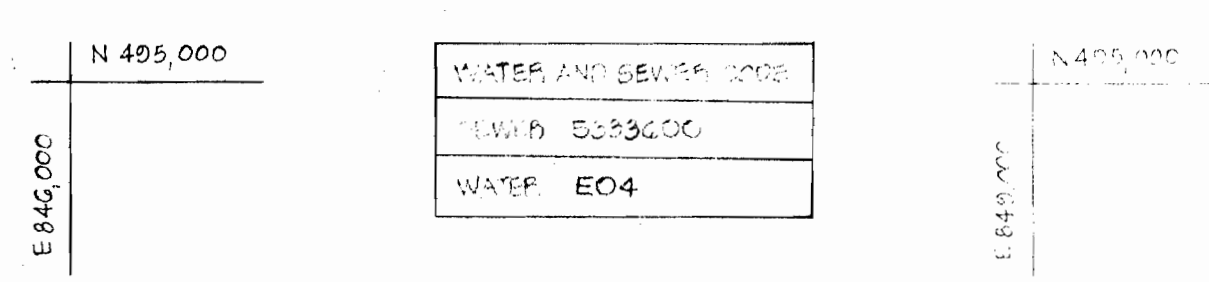
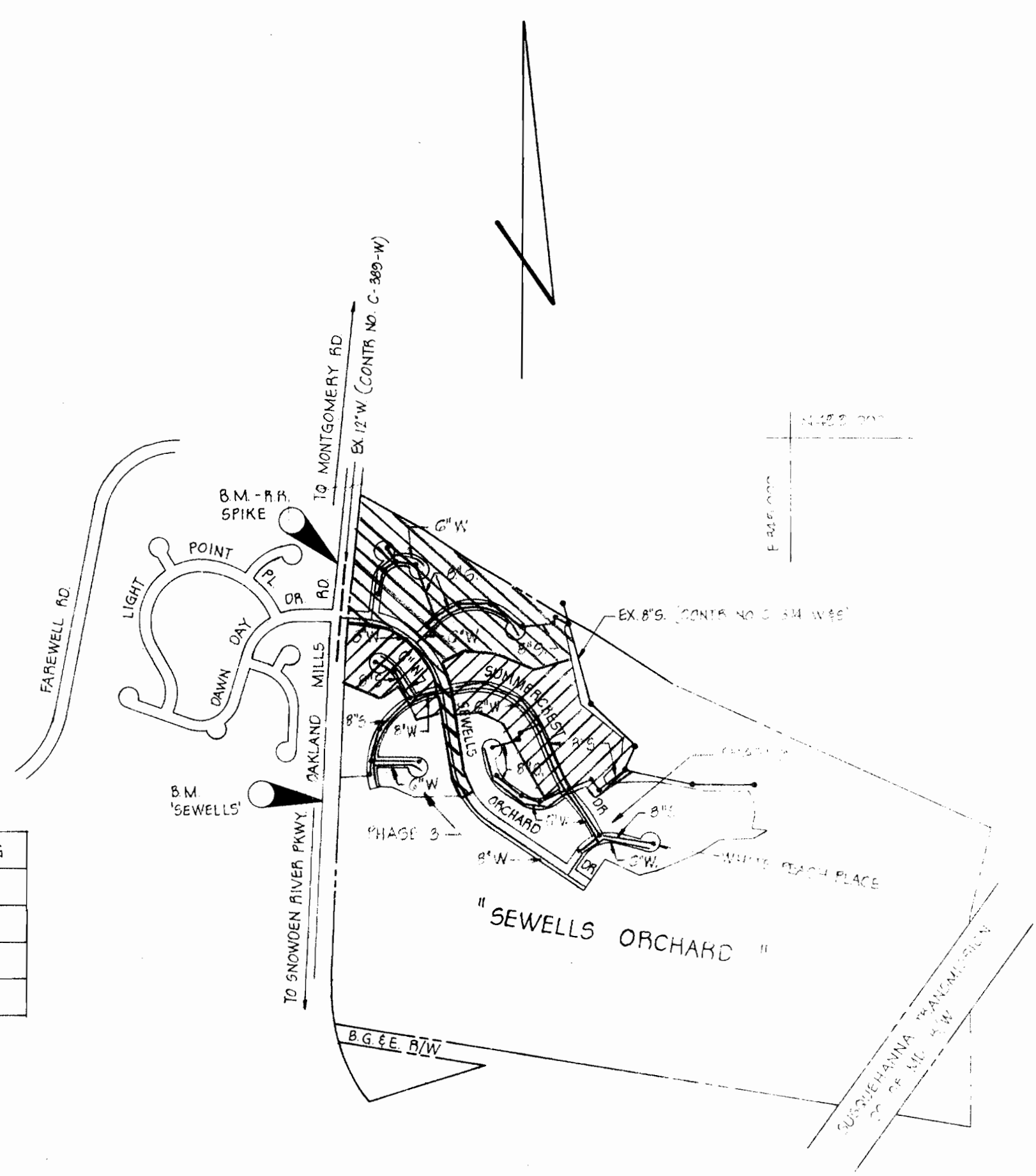


GENERAL NOTES

- APPROXIMATE LOCATIONS OF EXISTING MAINS ARE SHOWN. THE CONTRACTOR SHALL TAKE ALL NECESSARY PRECAUTIONS TO PROTECT THE EXISTING MAINS AND SERVICES AND MAINTAIN UNINTERRUPTED SERVICE. ANY DAMAGE INCURRED SHALL BE REPAIRED IMMEDIATELY.
- ALL PIPE ELEVATIONS SHOWN ARE INVERT ELEVATIONS.
- THE CONTRACTOR SHALL LOCATE EXISTING UTILITIES A MINIMUM OF TWO WEEKS IN ADVANCE OF CONSTRUCTION OPERATIONS IN VICINITY OF UTILITIES.
- FOR ALL STANDARD DETAILS, SEE STANDARDS BOUND IN SPECIFICATIONS.
- CLEAR ALL UTILITIES BY A MINIMUM OF 6" CLEARANCE ALL POLES BY A MINIMUM OF 2'0" OR TUNNEL AS REQUIRED.
- ALL WATER MAINS SHALL BE D.I.P., D.I.P. OR ASBESTOS CEMENT UNLESS OTHERWISE NOTED AND HAVE A MINIMUM OF 3' COVER.
- BLOCK ALL FITTINGS WITH CONCRETE. SEE STANDARDS BOUND IN SPECIFICATIONS.
- RUN LINE ELEVATIONS ON FIRE HYDRANTS SHALL BE SET TO ELEVATION SHOWN ON DRAWINGS.
- ALL FIRE HYDRANTS SHALL BE STRAPPED AND BUTTRESSED IN ACCORDANCE WITH STANDARD DETAILS. SOIL AROUND FIRE HYDRANTS SHALL BE COMPACTED IN ACCORDANCE WITH SECTION 6-18 OF THE STANDARDS SPECIFICATIONS.
- ALL VALVES SHALL BE STRAPPED TO TEES WHERE APPLICABLE IN ACCORDANCE WITH THE STANDARDS BOUND IN SPECIFICATIONS.
- COST OF STRAPPING FIRE HYDRANTS AND VALVES TO TEES IS TO BE INCLUDED IN THE UNIT PRICE BID FOR FURNISHING AND LAYING OF WATER MAIN.
- WATER SERVICES SHALL BE FOR INSIDE METER SETTING.
- ALL SEWER MAINS SHALL BE CC P.V.C.P. OR ASBESTOS CEMENT CLASS 2407 UNLESS OTHERWISE NOTED.
- ALL MANHOLES SHALL BE 4'-0" INSIDE DIAMETER.
- THE CONTRACTOR SHALL PROVIDE A JOINT IN ALL MAINS WITHIN 2'0" OF EXTERIOR MANHOLE WALLS.
- MINIMUM CELLAR ELEVATIONS SHOWN ARE THE MINIMUM ELEVATIONS WHICH CAN BE SERVICED BY SEWER MAINS.
- ELEVATIONS ARE BASED UPON MARYLAND STATE DATUM. COORDINATE VALUES SHOWN ON DRAWINGS ARE IN THE MARYLAND STATE GRID SYSTEM.
- THE CONTRACTOR SHALL NOTIFY THE FOLLOWING UTILITIES OR AGENCIES AT LEAST FIVE (5) DAYS PRIOR TO STARTING WORK SHOWN ON THESE PLANS:
BALTIMORE GAS AND ELECTRIC COMPANY 685-1123
UNDERGROUND ELECTRIC 992-2366
BUREAU OF UTILITIES, HOWARD COUNTY 1-7-8076
CAND P TELEPHONE COMPANY 303-3648
MISS UTILITY
- TWIN W.H.C. SHALL BE COMPOSED OF 1" COPPER FROM THE CORPORATION TO THE "Y" BRANCH AND 5' OF 3/4" COPPER TO EACH CURB SERVICE BOX. SEE STANDARD W-50 BOUND IN SPECIFICATIONS CURB STOPS TO BE SET 5' OFF OF PROPERTY CORNERS.
- THE CONTRACTOR SHALL NOT OPERATE ANY WATER MAIN VALVES ON THE EXISTING SYSTEM.

LEGEND
 PHASE 1
 PHASE 2

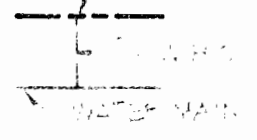
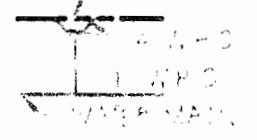
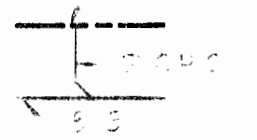

TYPE OF BUILDINGS	SINGLE FAMILY DWELLING
NUMBER OF LOTS	72
NUMBER OF WATER HOUSE CONNECTIONS	72
NUMBER OF SEWER HOUSE CONNECTIONS	72
DRAINAGE AREA	LITTLE PATUXENT



VICINITY MAP
SCALE: 1" = 600'

BENCH MARKS
 B.M. MONUMENT "SEWELL" ELEV. = 403.21'
 CONCRETE MONUMENT - BRONZE DISC ON TOP 25'± LEFT OF
 & OAKLAND MILLS ROAD (WEST SIDE) 900'± SOUTH OF & DAWN DAY DRIVE
 B.M. RAILROAD SPIKE ELEV. = 411.75'
 R.R. SPIKE IN SIDE OF B.G. & E. POLE # 169272

LEGEND

-  SINGLE W.H.C.
-  TWIN W.H.C. (SEE GENERAL NOTE 19)
-  SINGLE S.H.C.
-  TWIN S.H.C.

NOTE: SEDIMENT CONTROL MEASURES FOR THIS CONTRACT WILL BE IMPLEMENTED IN ACCORDANCE WITH SECTION 14 OF THE SPECIFICATIONS AND ROAD CONSTRUCTION PLAN F 80-105.

**SEWELLS ORCHARD
 SECTION I PHASE 3
 HOWARD COUNTY, MARYLAND
 DEPARTMENT OF PUBLIC WORKS**

ITEM	QUANTITIES		MATERIAL / SUPPLIER
	ESTIMATED	AS BUILT	
8" SEWER	1888 LF	1837.7	LOGAN CLAY PIPE
MANHOLES	12	12	ATLANTIC PRE-CAST
6" WATER	1112 LF	1175.2	U.S. PIPE (D.I.P.)
4" WATER	1643 LF	1727.3	U.S. PIPE (D.I.P.)
6" VALVES	2	2	U.S. PIPE FOUNDRY
4" VALVES	3	5	U.S. PIPE FOUNDRY
FIRE HYDRANTS	4	4	U.S. PIPE SMITH TYPE

* SEE NOTE (EXCLUDES F.H. VALVES)
 * SEE NOTE

NOTE: SOME 6" WATER AND VALVES AT SUMMERSET DR AND SUNHIGH PLACE WERE COMPLETED ON THIS PHASE INSTEAD OF PHASE

REVIEWED FOR HOWARD S.C.D. AND MEETS TECHNICAL REQUIREMENTS

James M. Hebe 9-18-80
 US SOIL CONSERVATION SERVICE DATE

THIS DEVELOPMENT IS APPROVED SOIL EROSION AND SEDIMENT CONTROL BY THE HOWARD SOIL CONSERVATION DISTRICT.

William J. Paine 9-18-80
 SOIL CONSERVATION DISTRICT DATE

DEPARTMENT OF PUBLIC WORKS
 HOWARD COUNTY, MARYLAND

DIRECTOR OF PUBLIC WORKS DATE
 CHIEF BUREAU OF ENGINEERING DATE
 CHIEF BUREAU OF UTILITIES DATE
 CHIEF LAND DEVELOPMENT DIVISION DATE

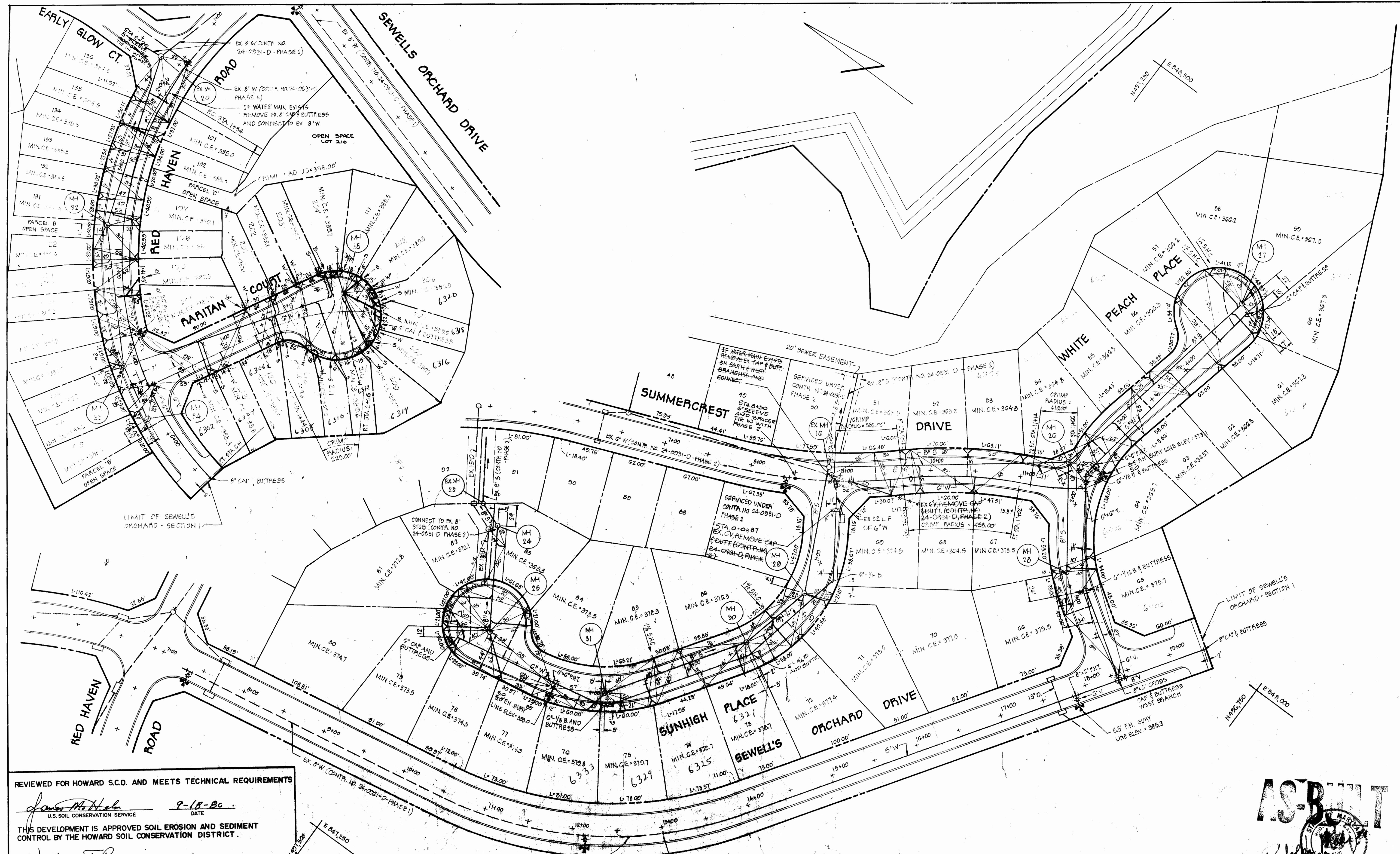
BOENDER ASSOCIATES, INC.
 ENGINEERS, PLANNERS, SURVEYORS
 BALTIMORE, MD. SALISBURY, MD.
 465-7777 749-1288

CONTRACT NO. 24-0932-D

SEWELLS ORCHARD SECTION I PHASE 3
 ELECTION DISTRICT NO. 6

DRAWING NO. 1 OF 3
 SCALE AS SHOWN
 DES. JJB
 DRW. JJB
 CHK. RLM
 1-15-80
 79/88

AS-BUILT APRIL 25 1981



REVIEWED FOR HOWARD S.C.D. AND MEETS TECHNICAL REQUIREMENTS

James M. Mahan 9-18-80
 U.S. SOIL CONSERVATION SERVICE DATE

THIS DEVELOPMENT IS APPROVED SOIL EROSION AND SEDIMENT CONTROL BY THE HOWARD SOIL CONSERVATION DISTRICT.

William J. Rame 9-18-80
 SOIL CONSERVATION DISTRICT DATE

DEPARTMENT OF PUBLIC WORKS
 HOWARD COUNTY, MARYLAND

James J. Mahan 9-22-80
 DIRECTOR OF PUBLIC WORKS DATE

William J. Rame 9-22-80
 CHIEF BUREAU OF UTILITIES DATE

Robert J. Boender 9-22-80
 CHIEF BUREAU OF ENGINEERING DATE

William J. Rame 9-22-80
 CHIEF LAND DEVELOPMENT DIVISION DATE

BOENDER ASSOCIATES, INC.
 ENGINEERS, PLANNERS, SURVEYORS
 BALTIMORE MD. SALISBURY MD.

CONTRACT NO. 24-0932-D

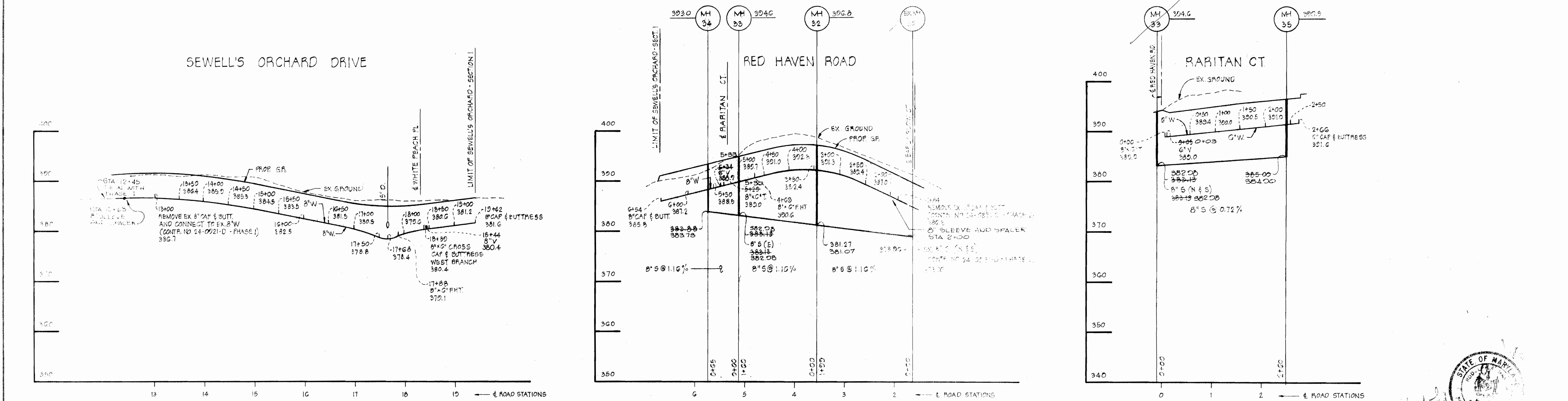
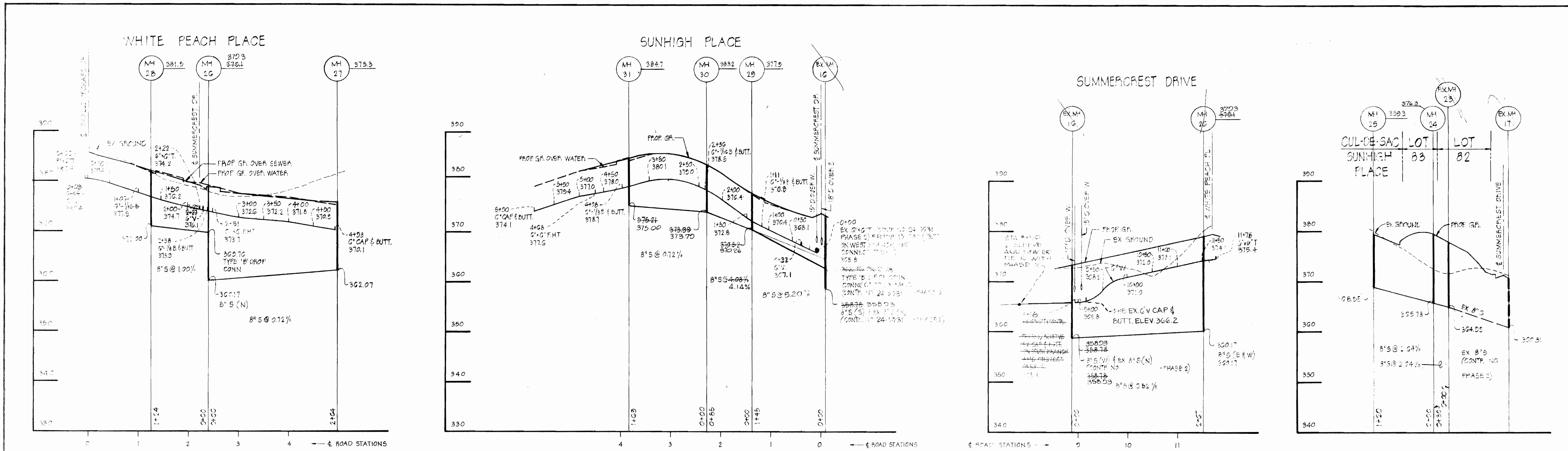
PLAN

SEWELLS ORCHARD SECTION I PHASE 3
 ELECTION DISTRICT NO. 6

DRAWING NO. 2 OF 3
 SCALE AS SHOWN
 DES: J.J.B.
 DRW: J.J.B.
 CHK: R.L.M.
 7/15/80



SEWELLS ORCHARD SECTION I PHASE 3
 CONTR. NO. 24-0932-D 9-15-80



DEPARTMENT OF PUBLIC WORKS
 HOWARD COUNTY, MARYLAND

DIRECTOR OF PUBLIC WORKS _____ DATE _____
 CHIEF BUREAU OF UTILITIES _____ DATE _____

CHIEF BUREAU OF ENGINEERING _____ DATE _____
 CHIEF LAND DEVELOPMENT DIVISION _____ DATE _____

BOENDER ASSOCIATES, INC.
 ENGINEERS, PLANNERS, SURVEYORS
 BALTIMORE, MD. 465-7777
 SALISBURY, MD. 749-1286

CONTRACT NO. 24-0932-D

PROFILES

SEWELLS ORCHARD SECTION I PHASE 3
 ELECTION DISTRICT NO. 6

DRAWING NO. 3 OF 3
 SCALE AS SHOWN
 DES: J.J.B.
 DRW: J.J.B.
 CHK: B.L.M.
 10156