

LEGEND  
 [Hatched Box] PHASE I

TYPES OF BUILDINGS: SINGLE FAMILY DWELLING
NUMBER OF LOTS: 43
NUMBER OF WATER HOUSE CONNECTIONS: 43
NUMBER OF SEWER HOUSE CONNECTIONS: 43
DRAINAGE AREA: LITTLE PATUXENT

WATER AND SEWER CODE
SEWER 5333 G00
WATER E04

VICINITY MAP  
 SCALE 1" = 600'

**GENERAL NOTES**

- APPROXIMATE LOCATIONS OF EXISTING MAINS ARE SHOWN. THE CONTRACTOR SHALL TAKE ALL NECESSARY PRECAUTIONS TO PROTECT THE EXISTING MAINS AND SERVICES AND MAINTAIN UNINTERRUPTED SERVICE. ANY DAMAGE INCURRED SHALL BE REPAIRED IMMEDIATELY.
- ALL PIPE ELEVATIONS SHOWN ARE INVERT ELEVATIONS.
- THE CONTRACTOR SHALL LOCATE EXISTING UTILITIES A MINIMUM OF TWO WEEKS IN ADVANCE OF CONSTRUCTION OPERATIONS IN VICINITY OF UTILITIES.
- FOR ALL STANDARD DETAILS, SEE STANDARDS BOUND IN SPECIFICATIONS.
- CLEAR ALL UTILITIES BY A MINIMUM OF 6", CLEAR ALL POLES BY A MINIMUM OF 2'-0" OR TUNNEL AS REQUIRED.
- ALL WATER MAINS SHALL BE C.I.P., D.I.P. OR ASBESTOS CEMENT UNLESS OTHERWISE NOTED AND HAVE A MINIMUM OF 3.5' COVER.
- BLOCK ALL FITTINGS WITH CONCRETE, SEE STANDARDS BOUND IN SPECIFICATIONS.
- BURY LINE ELEVATIONS ON FIRE HYDRANTS SHALL BE SET TO ELEVATION SHOWN ON DRAWINGS.
- ALL FIRE HYDRANTS SHALL BE STRAPPED AND BUTTRESSED IN ACCORDANCE WITH STANDARD DETAILS. SOIL AROUND FIRE HYDRANTS SHALL BE COMPACTED IN ACCORDANCE WITH SECTION 5-15 OF THE STANDARD SPECIFICATIONS.
- ALL VALVES SHALL BE STRAPPED TO TEES WHERE APPLICABLE IN ACCORDANCE WITH THE STANDARDS BOUND IN SPECIFICATIONS.
- COST OF STRAPPING FIRE HYDRANTS AND VALVES TO TEES IS TO BE INCLUDED IN THE UNIT PRICE BID FOR FURNISHING AND LAYING OF WATER MAIN.
- WATER SERVICES SHALL BE FOR INSIDE METER SETTING.
- ALL SEWER MAINS SHALL BE C.S.P.X., V.C.P.X. OR ASBESTOS CEMENT CLASS 2400 UNLESS OTHERWISE NOTED.
- ALL MANHOLES SHALL BE 4'-0" INSIDE DIAMETER.
- THE CONTRACTOR SHALL PROVIDE A JOINT IN ALL MAINS WITHIN 2'-0" OF EXTERIOR MANHOLE WALLS.
- MINIMUM CELLAR ELEVATIONS SHOWN ARE THE MINIMUM ELEVATIONS WHICH CAN BE SERVICED BY SEWER MAINS.
- ELEVATIONS ARE BASED UPON MARYLAND STATE DATUM. COORDINATE VALUES SHOWN ON DRAWINGS ARE IN THE MARYLAND STATE GRID SYSTEM.
- THE CONTRACTOR SHALL NOTIFY THE FOLLOWING UTILITIES AGENCIES AT LEAST FIVE (5) DAYS PRIOR TO STARTING WORK SHOWN ON THESE PLANS:  
 BALTIMORE GAS AND ELECTRIC COMPANY  
 UNDERGROUND ELECTRIC & GAS 685-0123  
 BUREAU OF UTILITIES, HOWARD COUNTY 992-2300  
 C AND P TELEPHONE COMPANY 727-9976  
 MISS UTILITY 393-3646
- TWIN W.H.C. SHALL BE COMPOSED OF 1" COPPER FROM THE CORPORATION TO THE "Y" BRANCH AND 5/8" COPPER TO EACH CURB SERVICE BOX. SEE STANDARD W-50 BOUND IN SPECIFICATIONS. CURB STOPS TO BE SET 5' OFF OF PROPERTY CORNERS.
- THE CONTRACTOR SHALL NOT OPERATE ANY WATER MAIN VALVES ON THE EXISTING SYSTEM.

**LEGEND**

- SINGLE W.H.C.
- TWIN W.H.C. (SEE GENERAL NOTE 10)
- SINGLE S.H.C.
- TWIN S.H.C.

**BENCH MARKS**

- B.M. MONUMENT "SEWELL" ELEV. 403.21  
 CONCRETE MONUMENT - BRONZE DISC ON TOP, 25'± LEFT OF  
 & OAKLAND MILLS ROAD (WEST SIDE), 800'± SOUTH OF  
 & DAWN DAY DRIVE.
- B.M. RAILROAD SPIKE ELEV. 411.75  
 R.R. SPIKE IN SIDE OF B.G. & E. POLE # 169272

**SEWELLS ORCHARD  
 SECTION I PHASE 2  
 HOWARD COUNTY, MARYLAND  
 DEPARTMENT OF PUBLIC WORKS**

QUANTITIES			
ITEM	ESTIMATED	AS-BUILT	MATERIAL / SUPPLIER
8" SEWER	1749 LF	1745.5	LOGAN CLAY PIPE YC.PX
MANHOLES	10	10	ATLANTIC PRE-CAST
8" WATER	180 LF	186.3	U.S. PIPE (D.I.P.)
6" WATER	1274 LF	1167.2	U.S. PIPE (D.I.P.) * SEE NOTE
8" VALVES	1	1	U.S. PIPE & FOUNDRY
6" VALVES	4	2	U.S. PIPE & FOUNDRY * SEE NOTE
FIRE HYDRANTS	3	3	SMITH U.S. PIPE & FOUNDRY

NOTE: DIFFERENCE BETWEEN ESTIMATED QUANTITY AND AS-BUILT QUANTITY WILL BE INCLUDED ON PHASE III (24-0932-D) CONTRACT.

*Robert May Jr.*  
 SEWELLS ORCHARD  
 SECTION I PHASE 2  
 CONTR. NO. 24-0931-D

DEPARTMENT OF PUBLIC WORKS  
 HOWARD COUNTY, MARYLAND

*Joseph F. Nimmer* 9-18-80  
 DIRECTOR OF PUBLIC WORKS DATE

*William S. Ray* 9-18-80  
 CHIEF BUREAU OF ENGINEERING DATE

*James L. Ellis* 9/16/80  
 CHIEF BUREAU OF UTILITIES DATE

*William H. Hui* 9-17-80  
 CHIEF LAND DEVELOPMENT DIVISION DATE

**BOENDER ASSOCIATES, INC.**  
 ENGINEERS, PLANNERS, SURVEYORS  
 BALTIMORE, MD. SALISBURY, MD.  
 468-7777 749-1289

CONTRACT NO. 24-0931-D

SEWELLS ORCHARD  
 SECTION I PHASE 2  
 ELECTION DISTRICT NO. 6

DRAWING NO.  
 1 OF 3

SCALE  
 AS  
 SHOWN

DES. J.J.B.  
 DRW. J.J.B.  
 CHK. R.L.M.  
 70150



REVIEWED FOR HOWARD S.C.D. AND MEETS TECHNICAL REQUIREMENTS  
 DATE 7-12-80  
 U.S. SOIL CONSERVATION SERVICE

THIS DEVELOPMENT IS APPROVED SOIL EROSION AND SEDIMENT CONTROL BY THE HOWARD SOIL CONSERVATION DISTRICT.

DATE 9-12-80  
 SOIL CONSERVATION DISTRICT

DEPARTMENT OF PUBLIC WORKS  
 HOWARD COUNTY, MARYLAND

DATE 2-18-80  
 DATE 2-18-80  
 DIRECTOR OF PUBLIC WORKS  
 CHIEF BUREAU OF ENGINEERING

DATE 9-12-80  
 CHIEF BUREAU OF UTILITIES  
 CHIEF LAND DEVELOPMENT DIVISION

NOTE:  
 SEDIMENT CONTROL MEASURES FOR THIS CONTRACT WILL BE IMPLEMENTED IN ACCORDANCE WITH SECTION 14 OF THE SPECIFICATIONS AND ROAD CONSTRUCTION PLAN F 80-105.

PLAN

SCALE: 1" = 50'

REV.	DATE	DESCRIPTION
1	1-28-80	REVISED LOTS 119 - 192/4 S.H.C. & 3 W.H.C.



CONTR. NO. 24-0931-D  
 SEWELLS ORCHARD  
 SECTION 1 PHASE 2

BOENDER ASSOCIATES, INC.  
 ENGINEERS, PLANNERS, SURVEYORS  
 BALTIMORE, MD. 465-7777  
 SALISBURY, MD. 749-1286

CONTRACT NO. 24-0931-D

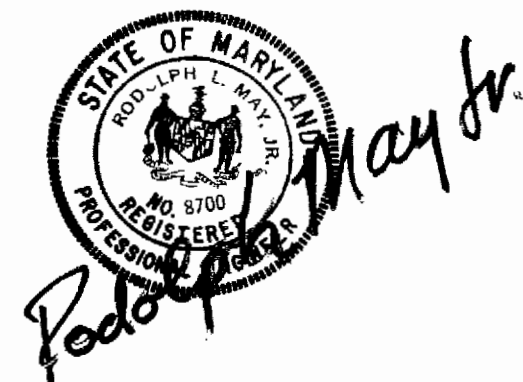
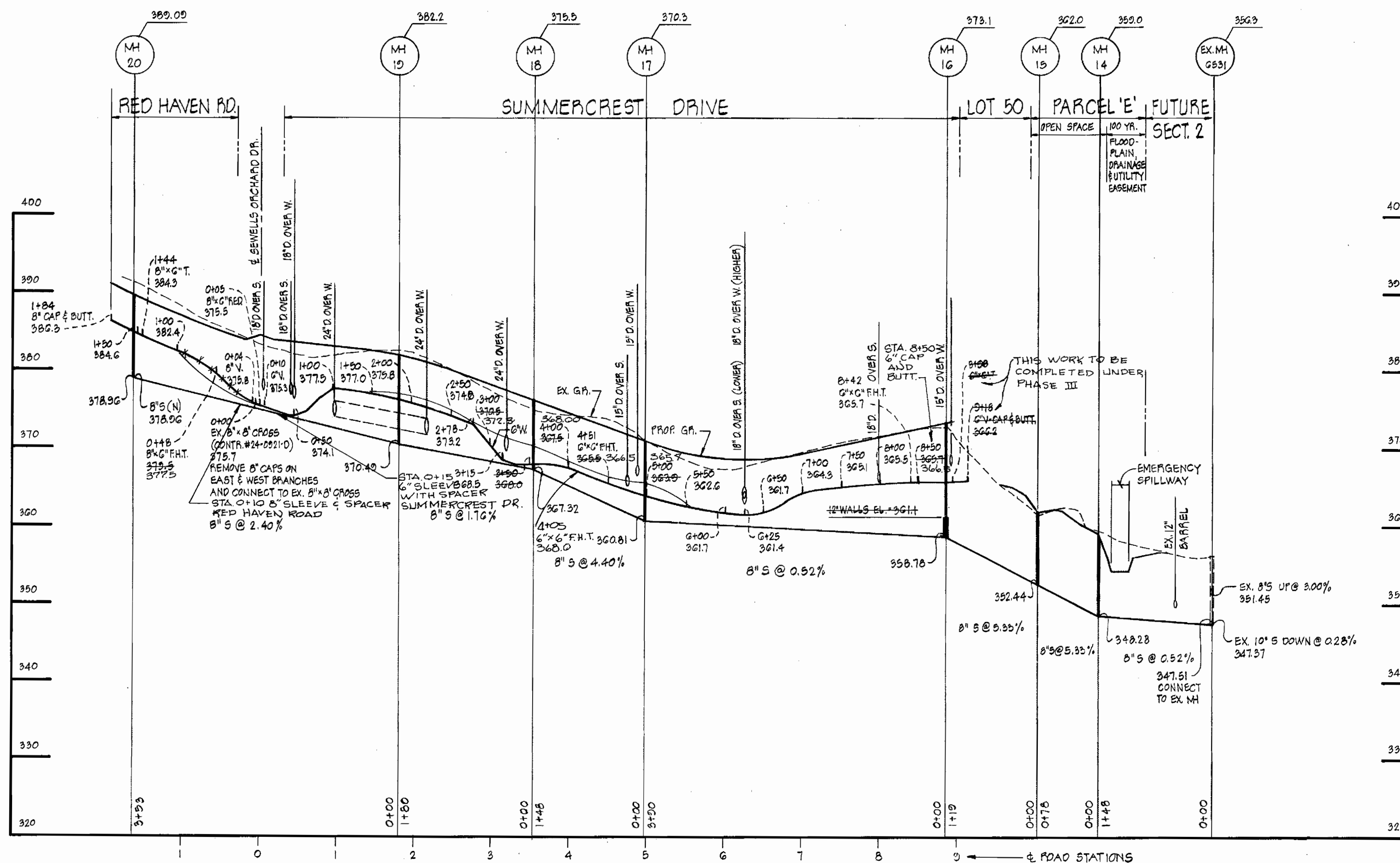
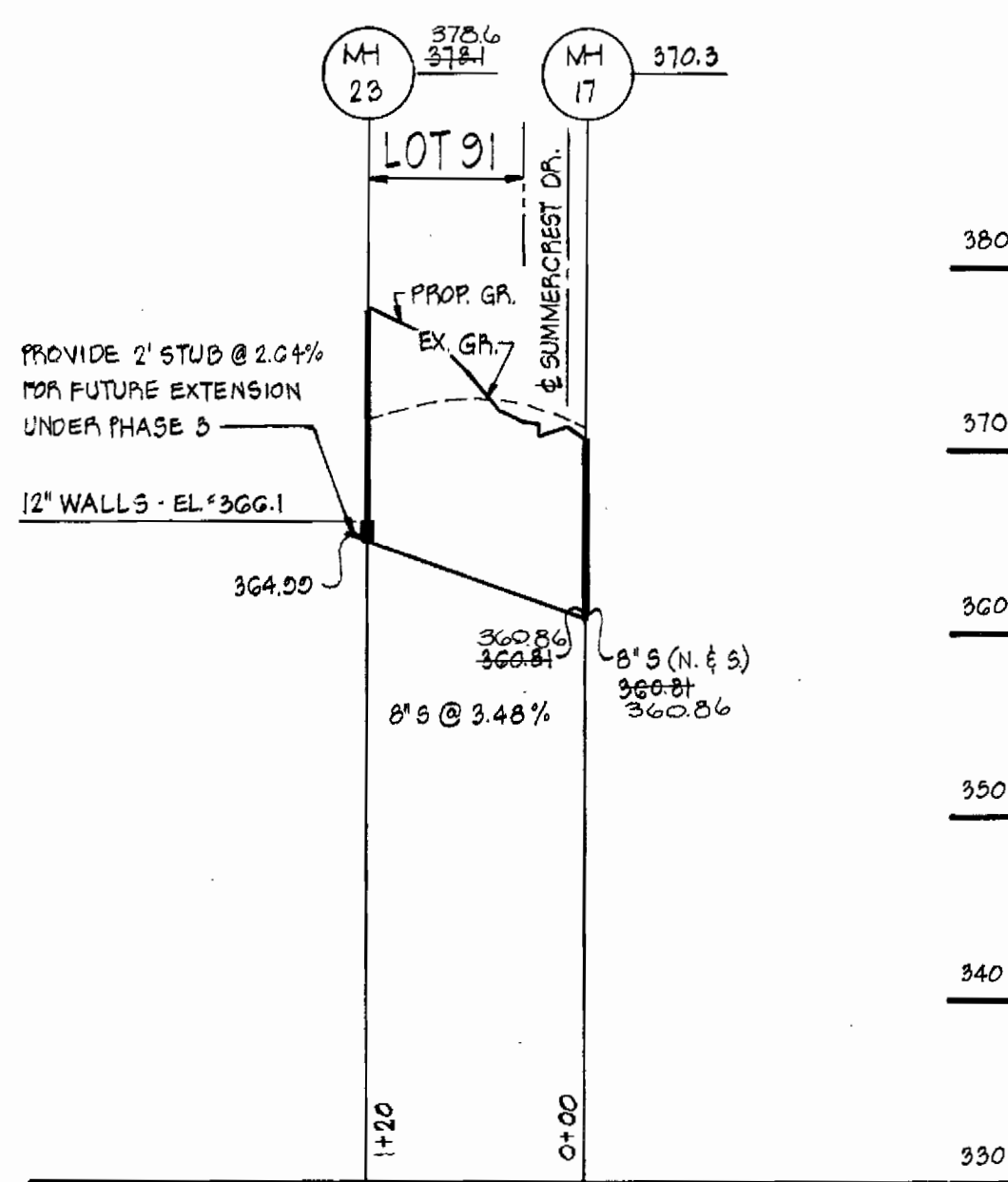
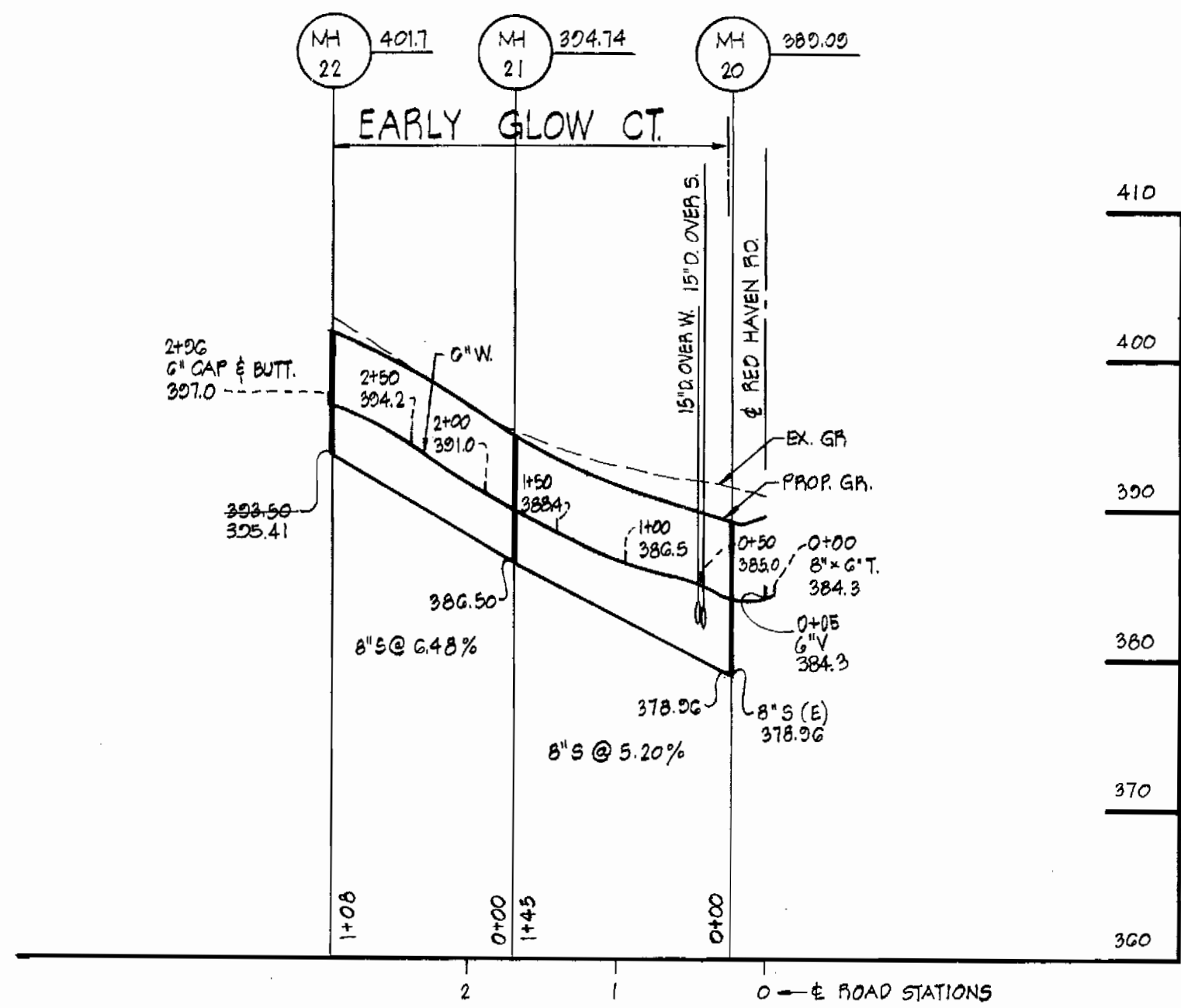
PLAN

SEWELLS ORCHARD  
 SECTION 1 PHASE 2  
 ELECTION DISTRICT NO. 6

DRAWING NO.  
 2 OF 3

SCALE AS SHOWN  
 DES: J.J.B.  
 DRW: J.J.B.  
 CHK: B.L.M.  
 7/1/80

THESE PLANS REVISED TO MAY 1983  
 AS-BUILT APRIL 28, 1981



DEPARTMENT OF PUBLIC WORKS  
HOWARD COUNTY, MARYLAND

*James F. Nimmey* 9-18-80  
DIRECTOR OF PUBLIC WORKS DATE

*William S. Reay* 2-18-80  
CHIEF BUREAU OF ENGINEERING DATE

*James L. Orlin* 9-18-80  
CHIEF BUREAU OF UTILITIES DATE

*William S. Reay* 9-18-80  
CHIEF LAND DEVELOPMENT DIVISION DATE

**BOENDER ASSOCIATES, INC.**  
ENGINEERS, PLANNERS, SURVEYORS  
BALTIMORE, MD. 465-7777  
SALISBURY, MD. 749-1286

**PROFILES**  
SCALE: HORIZ. 1"=100'  
VERT. 1"=10'

CONTRACT NO. 24-0931-D

**PROFILES**

SEWELLS ORCHARD  
SECTION I PHASE 2  
ELECTION DISTRICT NO. 6

DRAWING NO. 3 OF 3  
SCALE AS SHOWN  
DES: J.J.B.  
DRW: J.J.B.  
CHK: P.L.M.  
19156