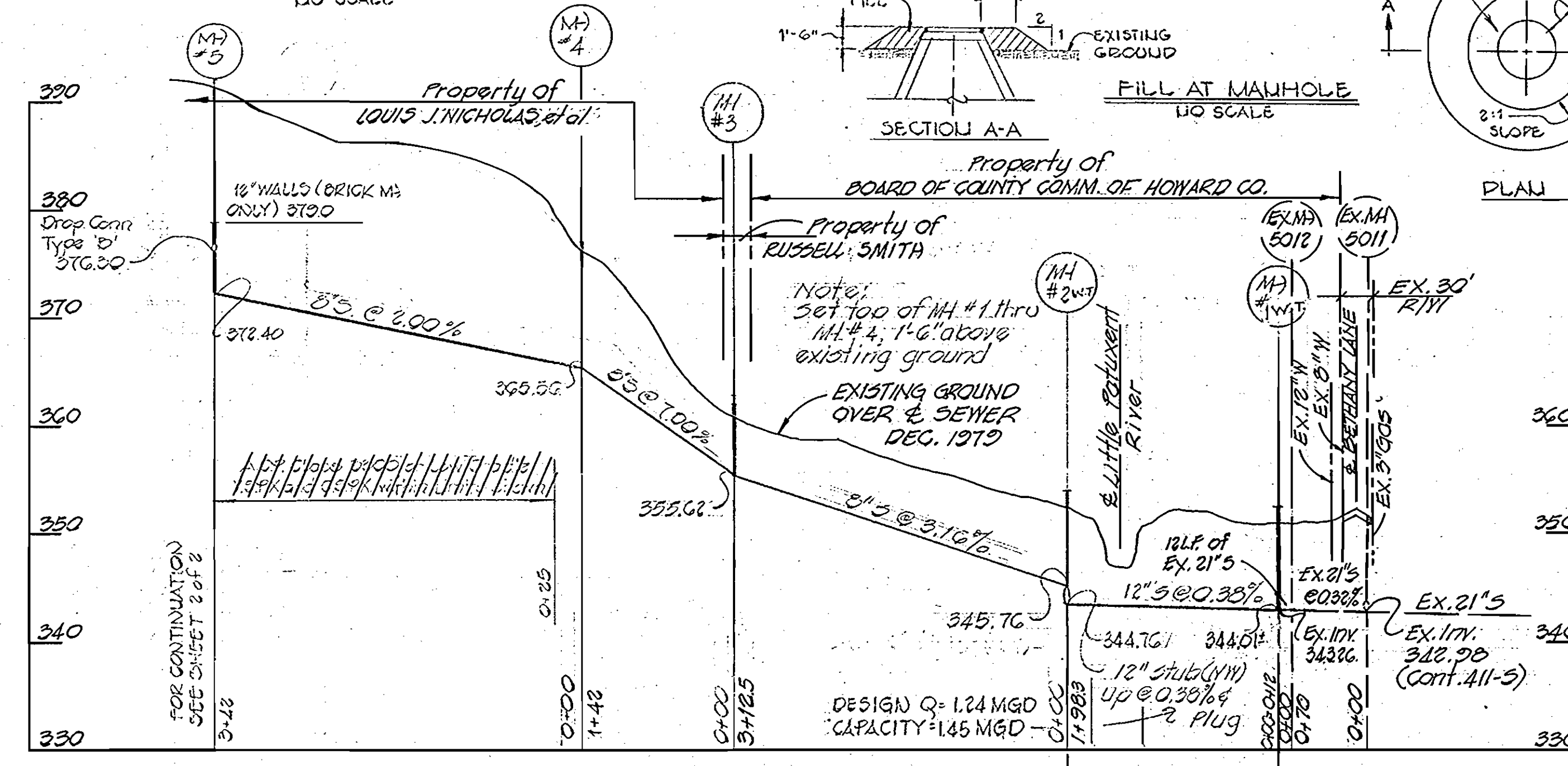
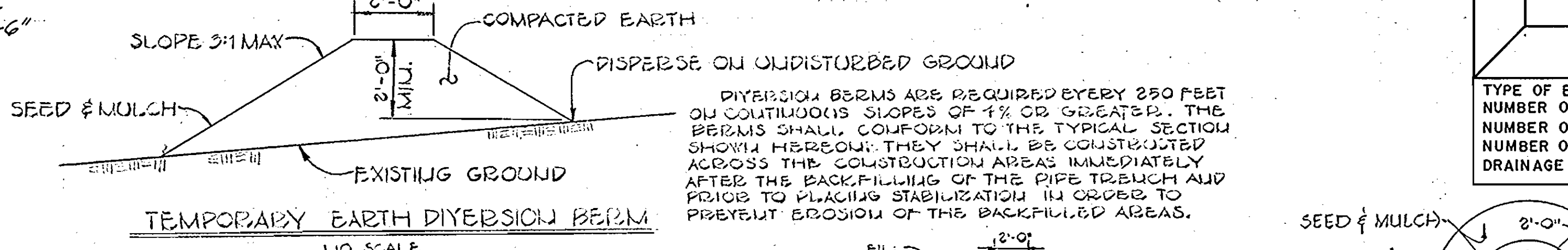
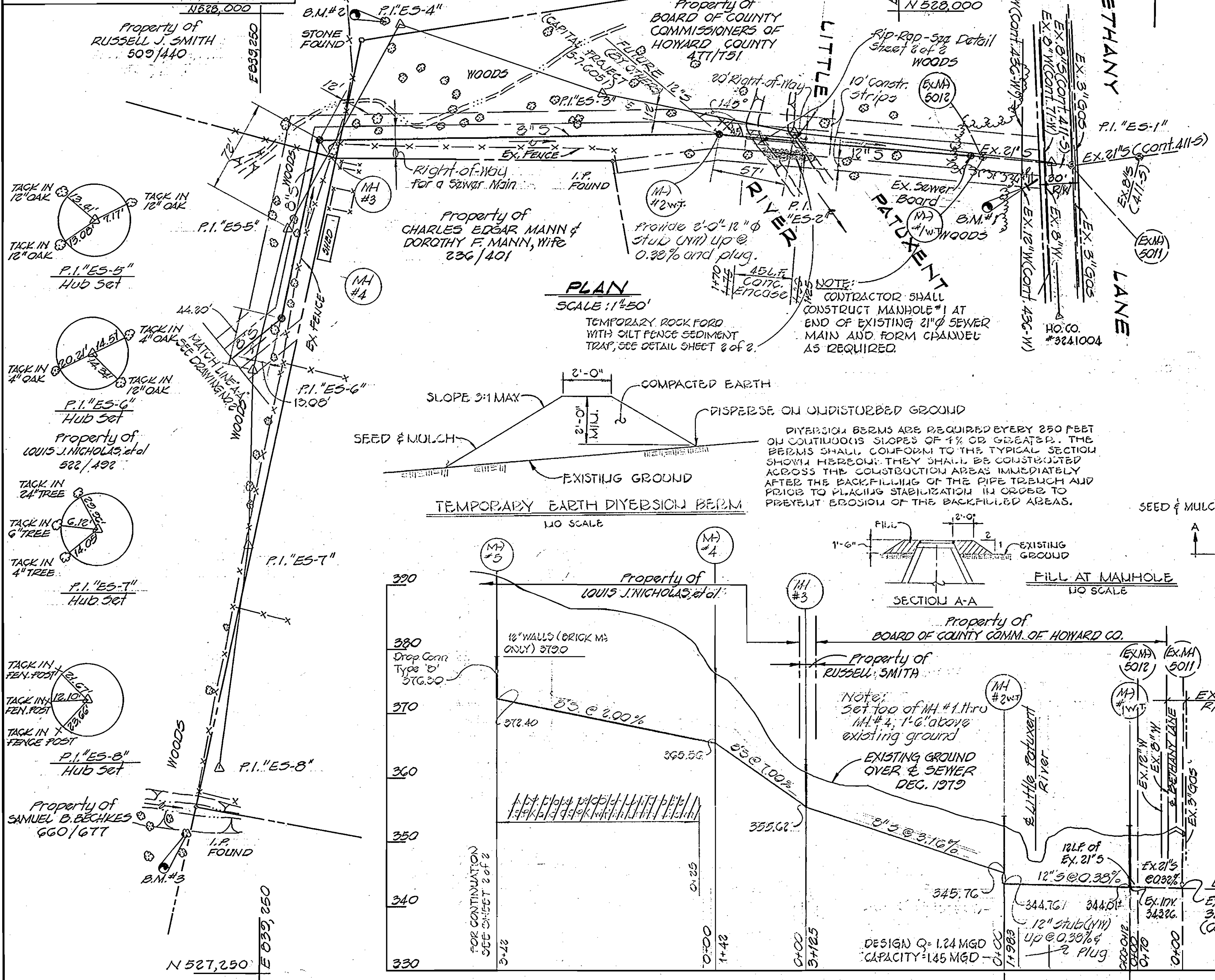
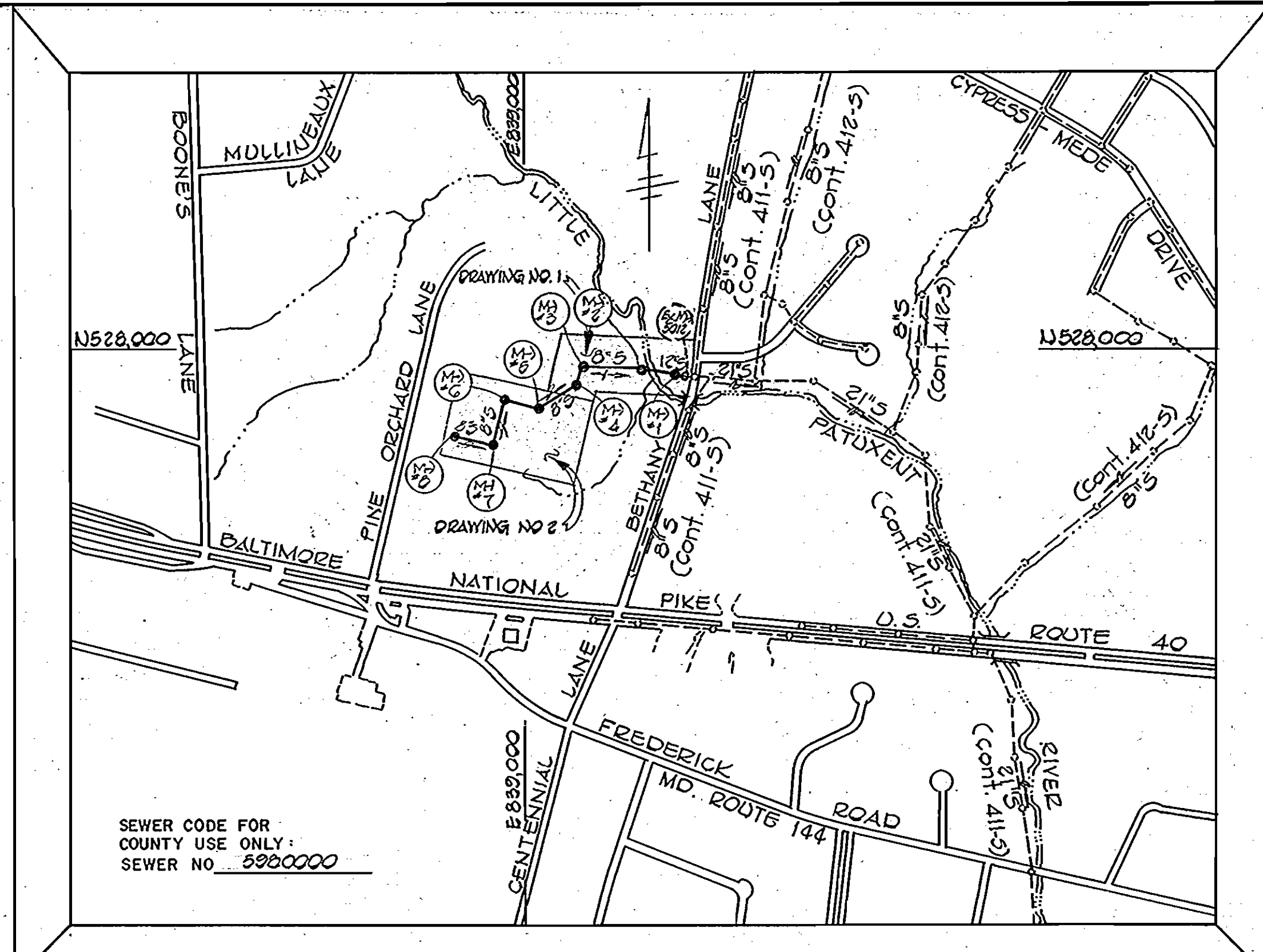


REVIEWED FOR HOWARD COUNTY SOIL CONSERVATION DISTRICT AND MEETS TECHNICAL REQUIREMENTS.
 James M. Helms, Jr. DATE 5-21-81
 U.S. SOIL CONSERVATION SERVICE
 THIS DEVELOPMENT PLAN IS APPROVED FOR EROSION AND SEDIMENT CONTROL BY THE HOWARD COUNTY SOIL CONSERVATION DISTRICT APPROVED
 Howard Soil Conservation District DATE 5-21-81



BENCH MARKS

F.C.C.B.M.#1	ELEV. 359.71
NAIL IN COP POLE NO. 11	100' FR. CONTROL POINT #321004.
F.C.C.B.M.#2	ELEV. 359.29
R.R. SPIKE IN 16" OAK 12' NW OF P.I. "ES-4"	
F.C.C.B.M.#3	ELEV. 373.56
R.R. SPIKE IN 24" OAK 150' SW FROM P.I. "ES-8"	



TYPE OF BUILDINGS: ZOLVED: 2-1
 NUMBER OF LOTS: 2 PARCELS
 NUMBER OF WATER HOUSE CONNS.: --
 NUMBER OF SEWER HOUSE CONNS.: --
 DRAINAGE AREA: LITTLE PATUXENT

VICINITY MAP SCALE: 1"=600'

GENERAL NOTES

- APPROXIMATE LOCATIONS OF EXISTING UTILITIES ARE SHOWN. THE CONTRACTOR SHALL TAKE ALL NECESSARY PRECAUTIONS TO PROTECT EXISTING MAINS AND SERVICES AND MAINTAIN UNINTERRUPTED SUPPLY. ANY DAMAGE INCURRED SHALL BE REPAIRED IMMEDIATELY TO THE SATISFACTION OF THE ENGINEER, AT THE CONTRACTORS EXPENSE.
- ALL PIPE ELEVATIONS SHOWN ARE INVERT ELEVATIONS.
- THE CONTRACTOR SHALL LOCATE EXISTING UTILITIES A MINIMUM OF TWO WEEKS IN ADVANCE OF CONSTRUCTION OPERATIONS IN VICINITY OF PROPOSED UTILITIES AT HIS OWN EXPENSE.
- FOR ALL STANDARD DETAILS, SEE STANDARDS BOUND IN THE SPECIFICATIONS.
- CLEAR ALL UTILITIES BY A MINIMUM OF 6 INCHES; CLEAR ALL POLES BY 2'-0" MIN. OR TUNNEL, AS REQUIRED. ANY COSTS INCURRED TO THE CONTRACTOR FOR TUNNELING OR BRACING AT POLES SHALL BE INCLUDED IN UNIT PRICES BID FOR EXCAVATION.
- THE CONTRACTOR SHALL PROVIDE A JOINT IN ALL SEWER MAINS WITHIN 2'-0" OF EXTERIOR MANHOLE WALLS.
- ALL MANHOLES SHALL BE 4'-0" INSIDE DIAMETER UNLESS OTHERWISE NOTED.
- TREES ARE TO BE PROTECTED FROM DAMAGE TO MAXIMUM EXTENT. TREES LOCATED WITHIN THE CONSTRUCTION STRIPS ARE NOT TO BE REMOVED OR DAMAGED BY THE CONTRACTOR.
- THE CONTRACTOR SHALL NOTIFY THE FOLLOWING UTILITIES OR AGENCIES AT LEAST FIVE (5) WORKING DAYS BEFORE STARTING WORK SHOWN ON THESE DRAWINGS:
 - BALTIMORE GAS & ELECTRIC - UNDERGROUND ELECTRIC DISTRIBUTION: CUSTOMER SERVICE (685-0123)
 - BALTIMORE GAS & ELECTRIC - UNDERGROUND GAS DISTRIBUTION: CUSTOMER SERVICE (685-0123)
 - ENGINEERING - "DAMAGE CONTROL" - (234-5621)
 - "MISS UTILITY" - (1-559-0100), FAX: (410) 381-2450, UNITS: 2450
 - CHESAPEAKE & POTOMAC (C&P) TELEPHONE - (725-9976)
 - BUREAU OF UTILITIES, HOWARD COUNTY (992-2366) ON MARYLAND STATE DATUM.
- ALL SEWER MAINS SHALL BE C.S.P.X., V.S.P.X. OR A.C.P. CLASS 2400, UNLESS OTHERWISE NOTED.
- ALL HORIZONTAL CONTROLS ARE BASED ON MARYLAND STATE DATUM.
- ALL VERTICAL CONTROLS ARE BASED ON U.S.G.S. DATUM.
- FOR MATERIAL AND CONSTRUCTION METHODS USE HOWARD COUNTY STANDARD SPECIFICATIONS.
- CONTRACTOR SHALL REMOVE TREES, STUMPS AND ROOTS ALONG LINE OF EXCAVATION AS DIRECTED BY THE ENGINEER. PAYMENT FOR SUCH REMOVAL SHALL BE INCLUDED IN THE UNIT PRICE BID FOR EXCAVATION AND BACKFILL.
- PLACE REGULATION "MEN WORKING" & WARNING SIGNS AS REQUIRED TO COMPLY WITH MARYLAND STATE-HIGHWAY ADMINISTRATION MANUAL-OF TRAFFIC CONTROL FOR HIGHWAY CONSTRUCTION & MAINTENANCE OPERATIONS.

ITEM	EST'D	AS-BUILT	SUPPLIER
12" SEWER	138 L.F.	194'	FLOW-DIP-USA
8" SEWER	1611 L.F.	1619'	FLOW-DIP-USA
MANHOLES	92 V.F.	98'	ATLANTIC-PRC CAST
6" SEWER	15 L.F.	13'	FLOW-DIP-USA

CONTRACT NO. 20-0923-D
 HOWARD ASSOCIATES
 MAP 24 - PAR. 10, 11 & 12
 SEWER MAIN EXTENSION

DEPARTMENT OF PUBLIC WORKS
 HOWARD COUNTY, MARYLAND
 Director of Public Works: James F. Newman, Jr. DATE 5-21-81
 Chief, Bureau of Engineering: William E. Roney DATE 5/22/81
 Chief, Bureau of Utilities: Robert B. Bennett DATE 5-20-81
 Chief, Land Development Division: William F. Price DATE 5/21/81

FISHER, COLLINS AND CARTER, INC.
 CIVIL ENGINEERS AND LAND SURVEYORS
 8388 COURT AVENUE
 ELLICOTT CITY, MARYLAND 21043

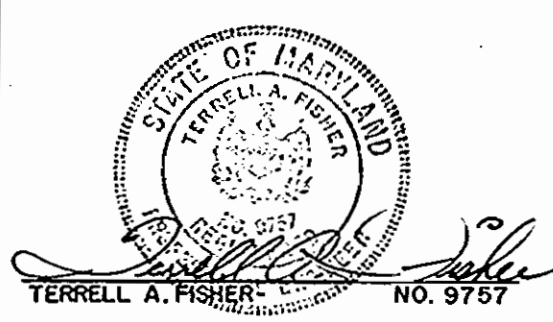
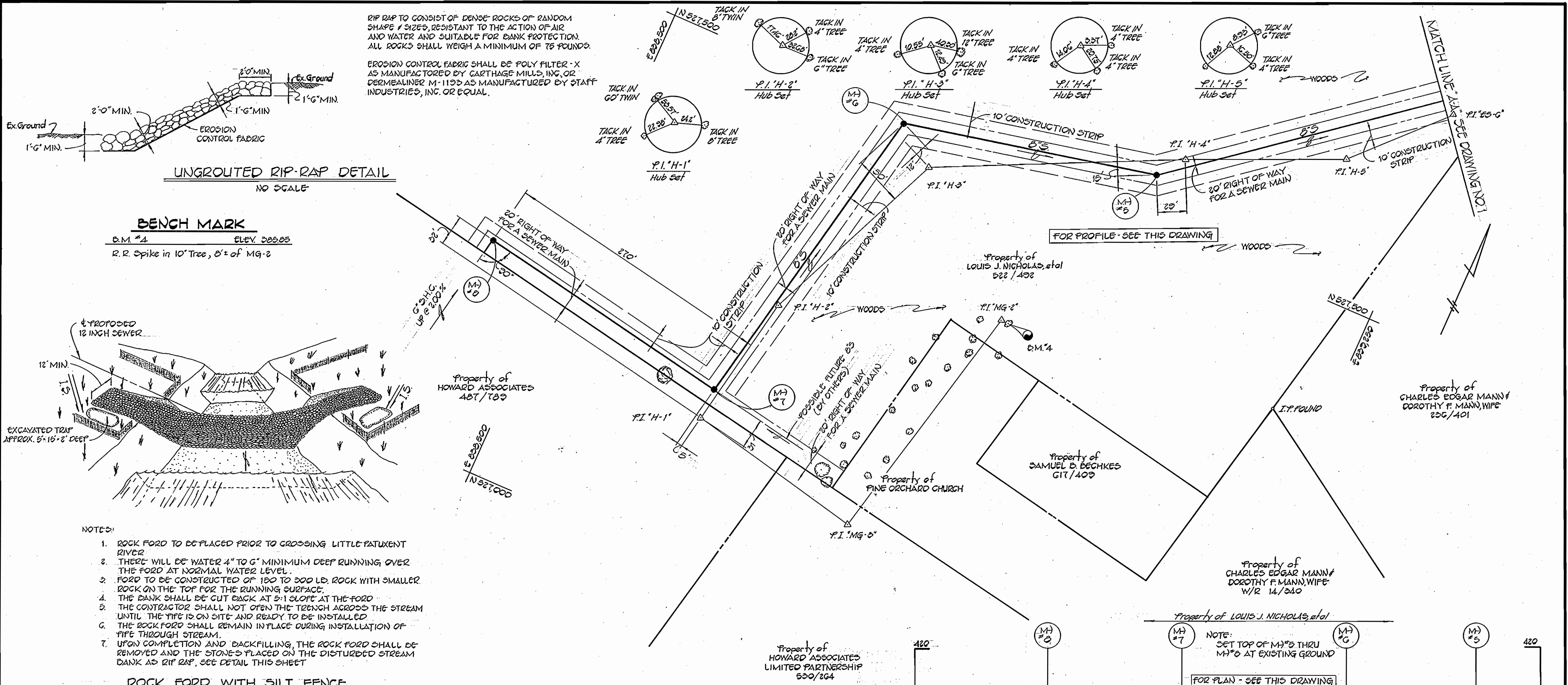
CONTRACT NO. 20-0923-D

PLAN & PROFILE OF SEWER MAINS

HOWARD ASSOCIATES
 MAP 24 - PARCELS 10, 11 & 12
 ELECTION DISTRICT ELLICOTT CITY NO. 2

DRAWING NO. 1 OF 2
 SCALE AS SHOWN
 DES: R.D.B.
 DRAFT: R.D.B.
 CHK: T.A.F.

WS 923-S/1



DEPARTMENT OF PUBLIC WORKS
 HOWARD COUNTY, MARYLAND
 Director of Public Works
 Chief, Bureau of Engineering
 Chief, Bureau of Utilities
 Chief, Land Development Division

FISHER, COLLINS AND CARTER, INC.
 CIVIL ENGINEERS AND LAND SURVEYORS
 8388 COURT AVENUE
 ELLICOTT CITY, MARYLAND 21043

CONTRACT NO. 20-0923 D

PLAN & PROFILE
 OF SEWER MAINS

HOWARD ASSOCIATES
 MAP 24 - PARCELS 10, 11 & 12
 ELECTION DISTRICT ELLICOTT CITY NO. 2

CONTRACT NO. 20-0923 D
 HOWARD ASSOCIATES
 MAP 24 - PAR. 10, 11, & 12
 SEWER MAIN EXTENSION

DRAWING NO. 2 OF 2
 SCALE AS SHOWN

DES: T.A.F.
 DRAFT: D.B.S.
 CHK: T.A.F.

WS 923-512