

TYPES OF BUILDINGS	SINGLE FAMILY DWELLING
NUMBER OF LOTS	30
NUMBER OF WATER HOUSE CONNECTIONS	30
NUMBER OF SEWER HOUSE CONNECTIONS	30
DRAINAGE AREA	LITTLE PATUXENT

WATER AND SEWER CODE
SEWER 5333G00
WATER E04

VICINITY MAP
SCALE 1" = 600'

GENERAL NOTES

- APPROXIMATE LOCATIONS OF EXISTING MAINS ARE SHOWN. THE CONTRACTOR SHALL TAKE ALL NECESSARY PRECAUTIONS TO PROTECT THE EXISTING MAINS AND SERVICES AND MAINTAIN UNINTERRUPTED SERVICE. ANY DAMAGE INCURRED SHALL BE REPAIRED IMMEDIATELY.
- ALL PIPE ELEVATIONS SHOWN ARE INVERT ELEVATIONS.
- THE CONTRACTOR SHALL LOCATE EXISTING UTILITIES A MINIMUM OF TWO WEEKS IN ADVANCE OF CONSTRUCTION OPERATIONS IN VICINITY OF UTILITIES.
- FOR ALL STANDARD DETAILS, SEE STANDARDS BOUND IN SPECIFICATIONS.
- CLEAR ALL UTILITIES BY A MINIMUM OF 6", CLEAR ALL POLES BY A MINIMUM OF 2'-0" OR TUNNEL AS REQUIRED.
- ALL WATER MAINS SHALL BE C.I.P., D.I.P. OR ASBESTOS CEMENT UNLESS OTHERWISE NOTED AND HAVE A MINIMUM OF 3'-6" COVER.
- BLOCK ALL FITTINGS WITH CONCRETE, SEE STANDARDS BOUND IN SPECIFICATIONS.
- BURY LINE ELEVATIONS ON FIRE HYDRANTS SHALL BE SET TO ELEVATION SHOWN ON DRAWINGS.
- ALL FIRE HYDRANTS SHALL BE STRAPPED AND BUTTRESSED IN ACCORDANCE WITH STANDARD DETAILS. SOIL AROUND FIRE HYDRANTS SHALL BE COMPACTED IN ACCORDANCE WITH SECTION 5-15 OF THE STANDARD SPECIFICATIONS.
- ALL VALVES SHALL BE STRAPPED TO TEES WHERE APPLICABLE IN ACCORDANCE WITH THE STANDARDS BOUND IN SPECIFICATIONS.
- COST OF STRAPPING FIRE HYDRANTS AND VALVES TO TEES IS TO BE INCLUDED IN THE UNIT PRICE BID FOR FURNISHING AND LAYING OF WATER MAIN.
- WATER SERVICES SHALL BE FOR INSIDE METER SETTING.
- ALL SEWER MAINS SHALL BE C.C.P.X., V.C.P.X. OR ASBESTOS CEMENT CLASS 2400 UNLESS OTHERWISE NOTED.
- ALL MANHOLES SHALL BE 4'-0" INSIDE DIAMETER.
- THE CONTRACTOR SHALL PROVIDE A JOINT IN ALL MAINS WITHIN 2'-0" OF EXTERIOR MANHOLE WALLS.
- MINIMUM CELLAR ELEVATIONS SHOWN ARE THE MINIMUM ELEVATIONS WHICH CAN BE SERVICED BY SEWER MAINS.
- ELEVATIONS ARE BASED UPON MARYLAND STATE DATUM. COORDINATE VALUES SHOWN ON DRAWINGS ARE IN THE MARYLAND STATE GRID SYSTEM.
- THE CONTRACTOR SHALL NOTIFY THE FOLLOWING UTILITIES OR AGENCIES AT LEAST FIVE (5) DAYS PRIOR TO STARTING WORK SHOWN ON THESE PLANS:
BALTIMORE GAS AND ELECTRIC COMPANY
UNDERGROUND ELECTRIC & GAS 685-0125
BUREAU OF UTILITIES, HOWARD COUNTY 292-2366
C&D TELEPHONE COMPANY 717-8076
MISS UTILITY 302-3648
- TWIN W.H.C. SHALL BE COMPOSED OF 1" COPPER FROM THE CORPORATION TO THE "Y" BRANCH AND 5/8" COPPER TO EACH CURB SERVICE BOX. SEE STANDARD W-50 BOUND IN SPECIFICATIONS. CURB STOPS TO BE SET 5' OFF OF PROPERTY CORNERS.
- TREES ARE TO BE PROTECTED FROM DAMAGE TO MAXIMUM EXTENT. TREES LOCATED WITHIN THE CONSTRUCTION STRIP ARE NOT TO BE REMOVED OR DAMAGED BY THE CONTRACTOR.
- CONTRACTOR SHALL REMOVE TREES, STUMPS AND ROOTS ALONG LINE OF EXCAVATION AS DIRECTED BY THE ENGINEER. PAYMENT FOR SUCH REMOVAL SHALL BE INCLUDED IN THE UNIT PRICE BID FOR EXCAVATION AND BACKFILL FOR WATER AND SEWER MAINS.
- PLACE REGULATION "MEN WORKING" AND WARNING SIGNS AS REQUIRED TO COMPLY WITH MARYLAND STATE HIGHWAY ADMINISTRATION MANUAL OF TRAFFIC CONTROL FOR HIGHWAY CONSTRUCTION AND MAINTENANCE OPERATIONS.
- THE CONTRACTOR SHALL NOT OPERATE ANY WATER MAIN VALVES ON THE EXISTING SYSTEM.

LEGEND

- SINGLE W.H.C.
- TWIN W.H.C. (SEE GENERAL NOTE 10)
- WATER MAIN
- SINGLE S.H.C.
- TWIN S.H.C.

REVIEWED FOR HOWARD S.C.D. AND METS TECHNICAL REQUIREMENTS.

Samuel R. ... 9-12-80
U.S. SOIL CONSERVATION SERVICE DATE

THIS DEVELOPMENT IS APPROVED SOIL EROSION AND SEDIMENT CONTROL BY THE HOWARD SOIL CONSERVATION DISTRICT.

William V. Rame 9-12-80
SOIL CONSERVATION DISTRICT DATE

BENCH MARKS

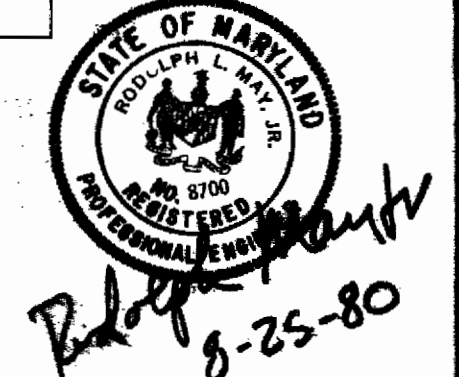
- B.M. MONUMENT "SEWELL" ELEV. 40321
CONCRETE MONUMENT - BRONZE DISC ON TOP, 25' ± LEFT OF & OAKLAND MILLS ROAD (WEST SIDE), 900' ± SOUTH OF & DAWN DAY DRIVE.
- B.M. RAILROAD SPIKE ELEV. 41175
R.R. SPIKE IN SIDE OF D.G. & E. POLE # 162272

SEDIMENT CONTROL MEASURES FOR THIS CONTRACT WILL BE IMPLEMENTED IN ACCORDANCE WITH SECTION 1A OF THE SPECIFICATIONS, AND ROAD CONSTRUCTION PLAN F 80-105

SEWELLS ORCHARD SECTION I PHASE I HOWARD COUNTY, MARYLAND DEPARTMENT OF PUBLIC WORKS

QUANTITIES			
ITEM	ESTIMATED	AS-BUILT	MATERIAL SUPPLIER
8" SEWER	1410 LF	1408.5	LOGAN V.C.P.X.
MANHOLES	13	13	PRE-CAST (ATLANTIC)
8" WATER	1300 LF	1247.5	U.S. PIPE
6" WATER	1282 LF	1281.4	U.S. PIPE
8" VALVES	2	3	U.S. PIPE & FOUNDRY
6" VALVES	2	3	U.S. PIPE & FOUNDRY
FIRE HYDRANTS	3	3	SMITH, U.S. P & F

EXCLUDES FH VALVES



DEPARTMENT OF PUBLIC WORKS
HOWARD COUNTY, MARYLAND

Henry F. Nummy 9-18-80
DIRECTOR OF PUBLIC WORKS DATE

William D. Rhy 9-18-80
CHIEF BUREAU OF ENGINEERING DATE

James L. Ellis 9-17-80
CHIEF BUREAU OF UTILITIES DATE

Malcolm J. ... 9-17-80
CHIEF LAND DEVELOPMENT DIVISION DATE

BOENDER ASSOCIATES, INC.
ENGINEERS, PLANNERS, SURVEYORS
BALTIMORE, MD. 465-7777
SALISBURY, MD. 749-1288

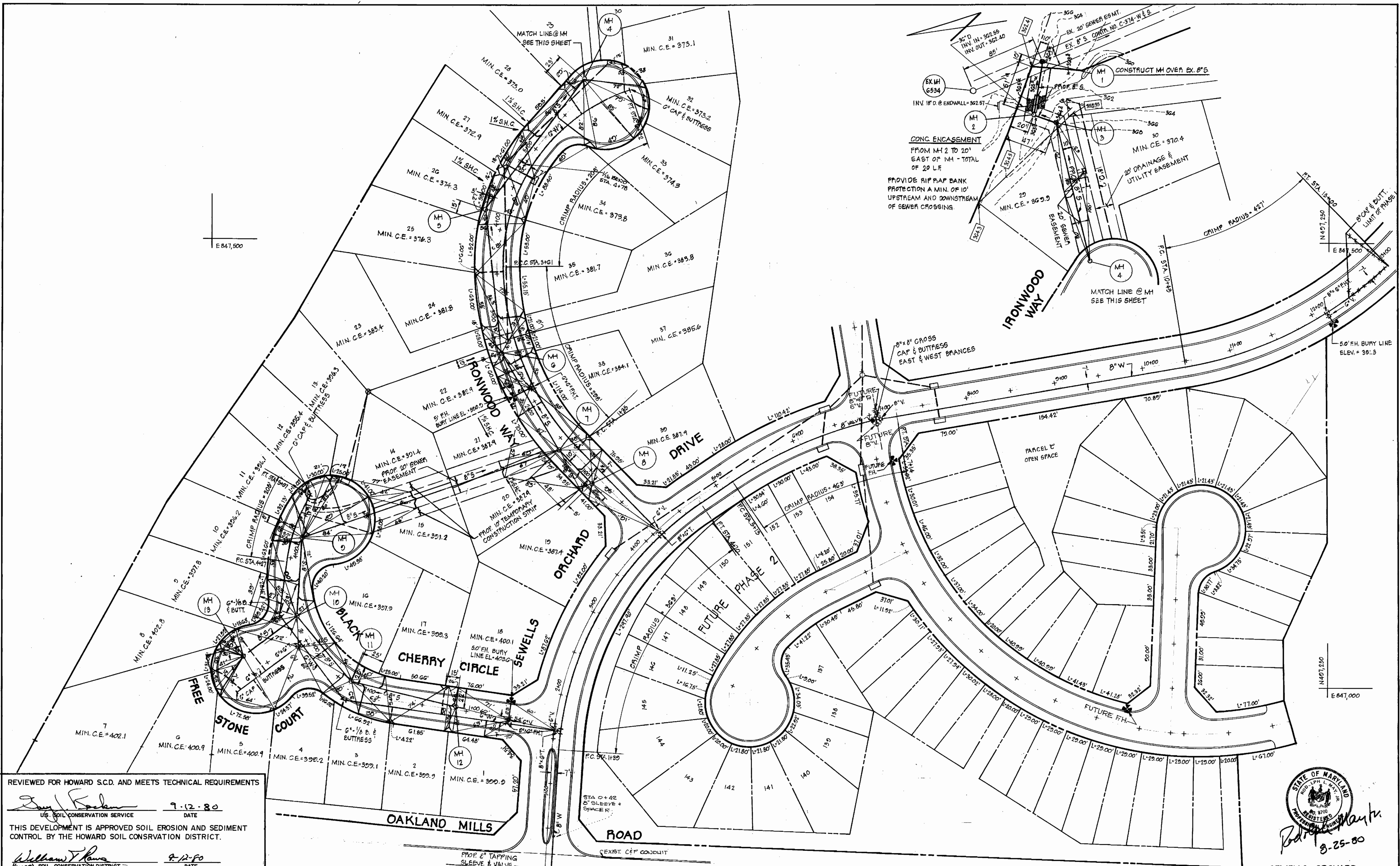
CONTRACT NO. 24-0921-D

VICINITY MAP

SEWELLS ORCHARD
SECTION I PHASE I
ELECTION DISTRICT NO. 6

DRAWING NO.
1 OF 3

SCALE AS SHOWN
DES: J.J.D.
DRW: J.J.D.
CHK: R.L.M.
79/80



REVIEWED FOR HOWARD S.C.D. AND MEETS TECHNICAL REQUIREMENTS

[Signature] 9-12-80
 U.S. SOIL CONSERVATION SERVICE DATE

THIS DEVELOPMENT IS APPROVED SOIL EROSION AND SEDIMENT CONTROL BY THE HOWARD SOIL CONSERVATION DISTRICT.

[Signature] 9-12-80
 HOWARD SOIL CONSERVATION DISTRICT DATE

DEPARTMENT OF PUBLIC WORKS
 HOWARD COUNTY, MARYLAND

[Signature] 9-18-80
 DIRECTOR OF PUBLIC WORKS DATE

[Signature] 9-18-80
 CHIEF BUREAU OF ENGINEERING DATE

[Signature] 9-18-80
 CHIEF BUREAU OF UTILITIES DATE

[Signature] 9-18-80
 CHIEF LAND DEVELOPMENT DIVISION DATE

BOENDER ASSOCIATES, INC.
 ENGINEERS, PLANNERS, SURVEYORS,
 BALTIMORE, MD. SALISBURY MD.
 465-7777 749-1286

CONTRACT NO. 24-0921-D

PLAN
 SCALE: 1"=50'

PLAN

SEWELLS ORCHARD
 SECTION I PHASE I
 ELECTION DISTRICT NO. 6

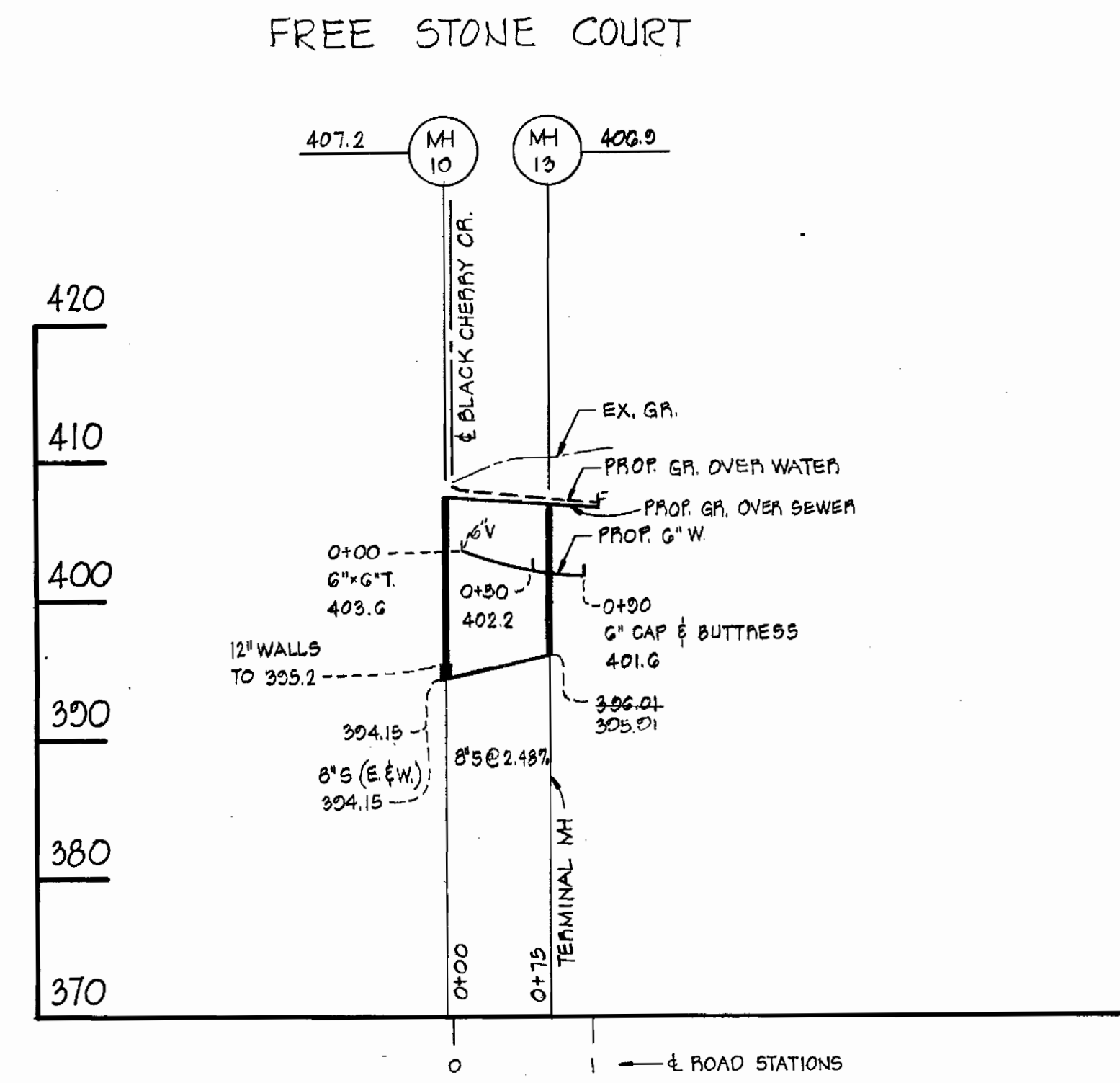
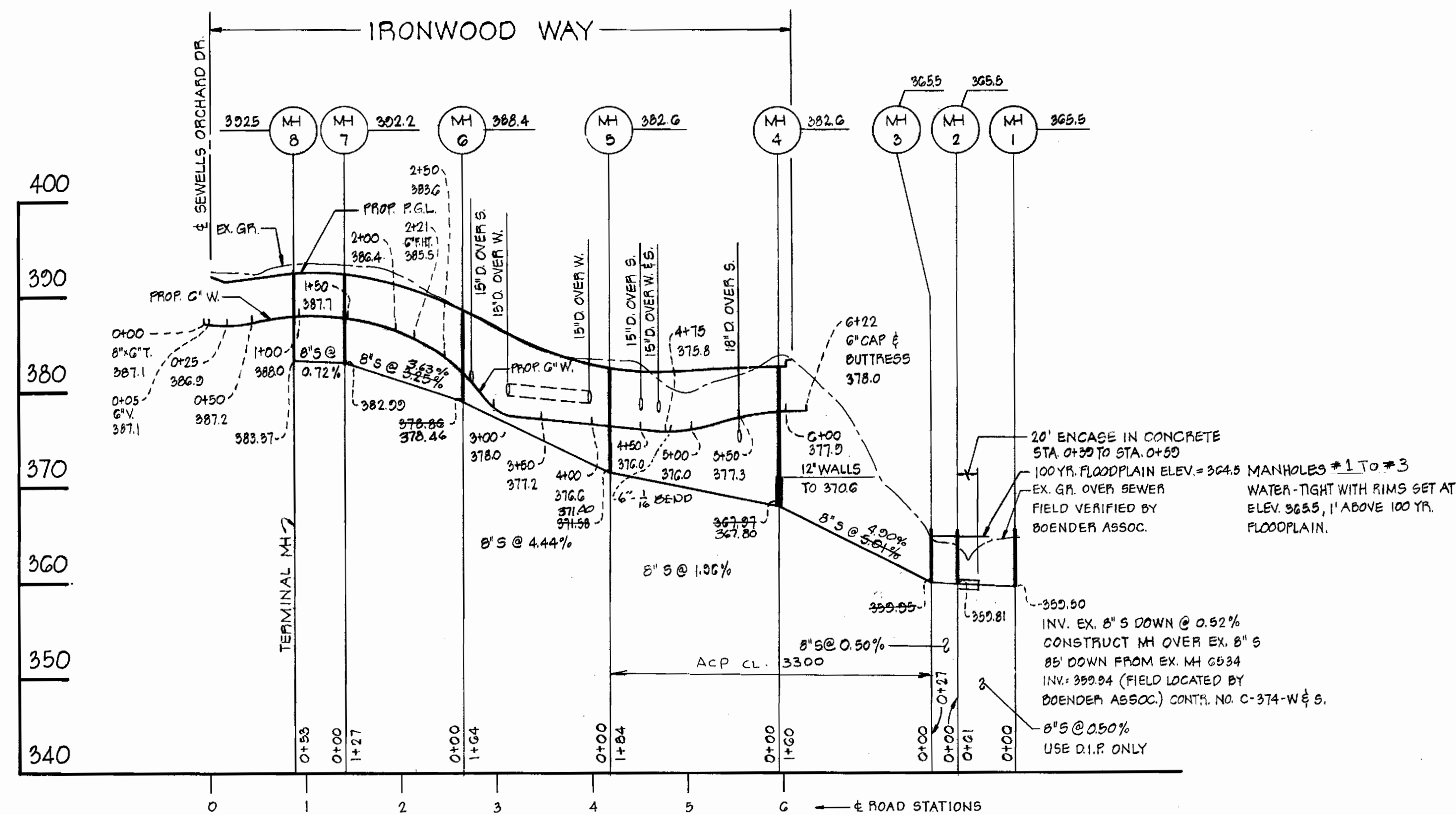
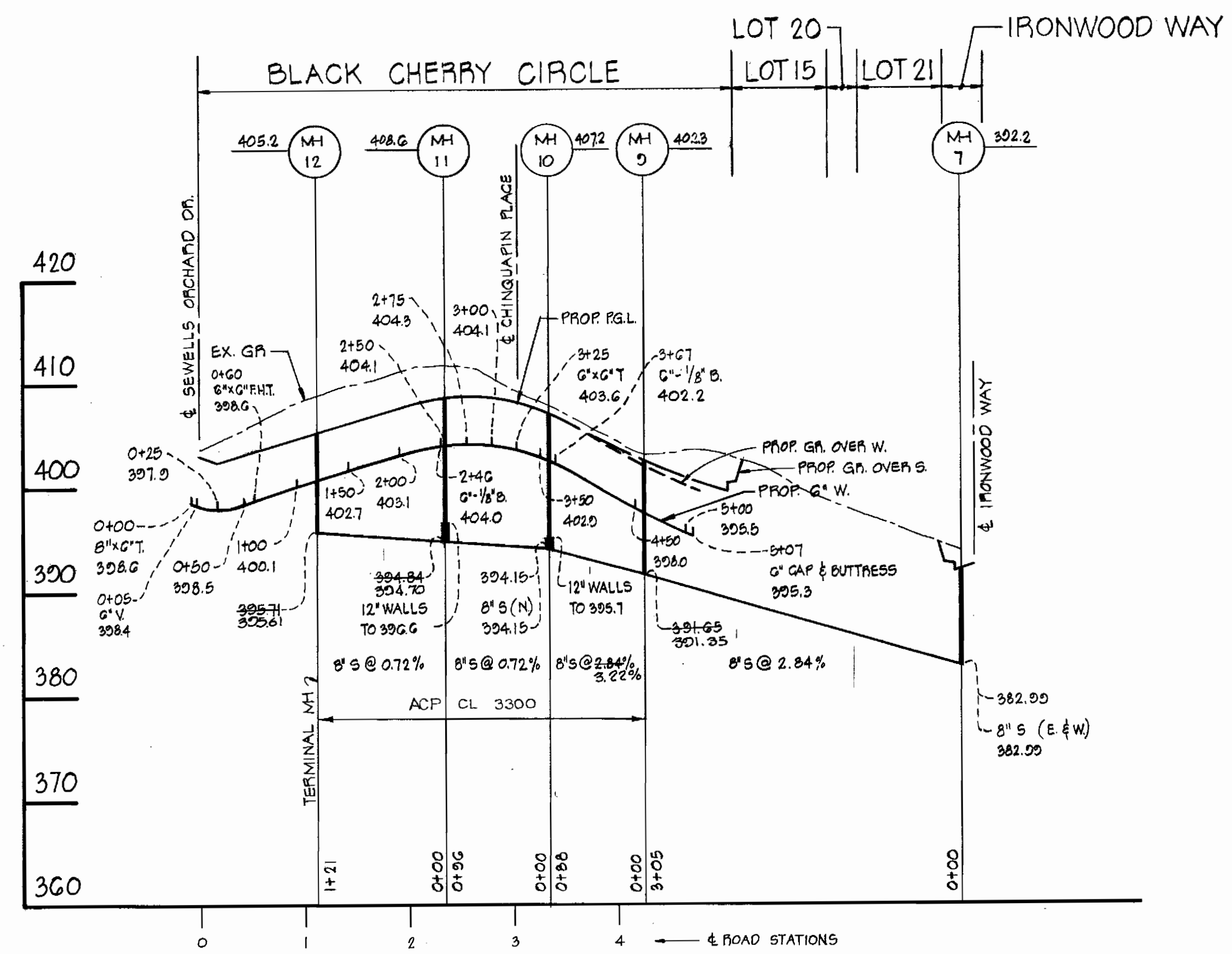
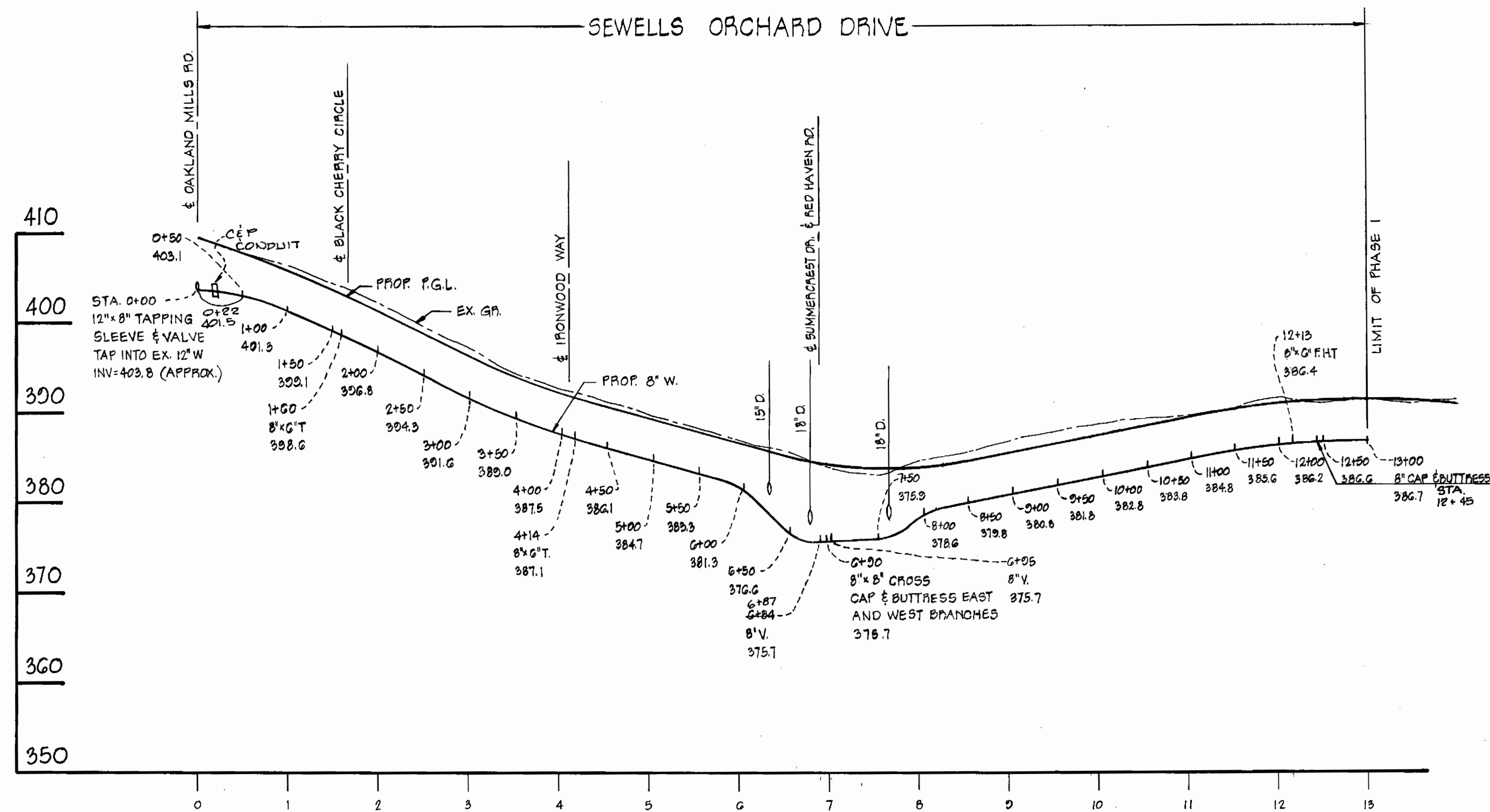
DRAWING NO.
 2 OF 3

SCALE
 AS
 SHOWN

DES: J.J.B.
 DRW: J.J.B.
 CHK: R.L.M.
 79156

STATE OF MARYLAND
 REGISTERED PROFESSIONAL ENGINEER
[Signature]
 9-25-80

SEWELLS ORCHARD
 SECTION I PHASE I
 CONTRACT NO. 24-0921-D



PROFILES

SCALE: HORIZ. 1" = 100'
VERT. 1" = 10'

Robert J. ...
8-23-80

DEPARTMENT OF PUBLIC WORKS
HOWARD COUNTY, MARYLAND

James F. ... 9-18-80
DIRECTOR OF PUBLIC WORKS DATE

William E. ... 9-18-80
CHIEF BUREAU OF ENGINEERING DATE

James L. ... 9-18-80
CHIEF BUREAU OF UTILITIES DATE

William L. ... 9-18-80
CHIEF LAND DEVELOPMENT DIVISION DATE

BOENDER ASSOCIATES, INC.
ENGINEERS, PLANNERS, SURVEYORS.
BALTIMORE, MD. 465-7777

CONTRACT NO. 24-0921-D

PROFILES

SEWELLS ORCHARD
SECTION I PHASE I
ELECTION DISTRICT NO. 6

DRAWING NO.
3 OF 3

SCALE AS SHOWN
DES: J.J.D.
DRW: J.J.D.
CHK: P.L.M.
7/15/80