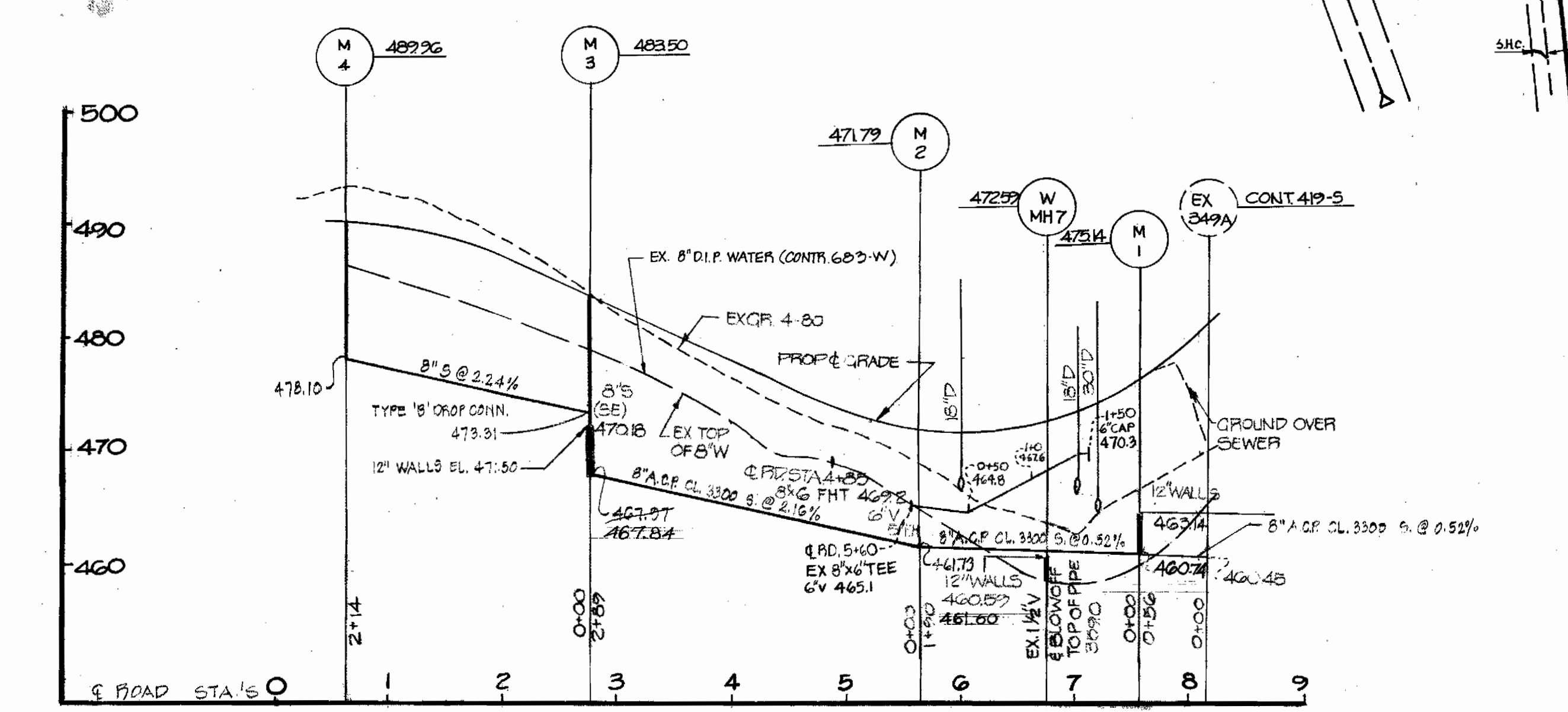
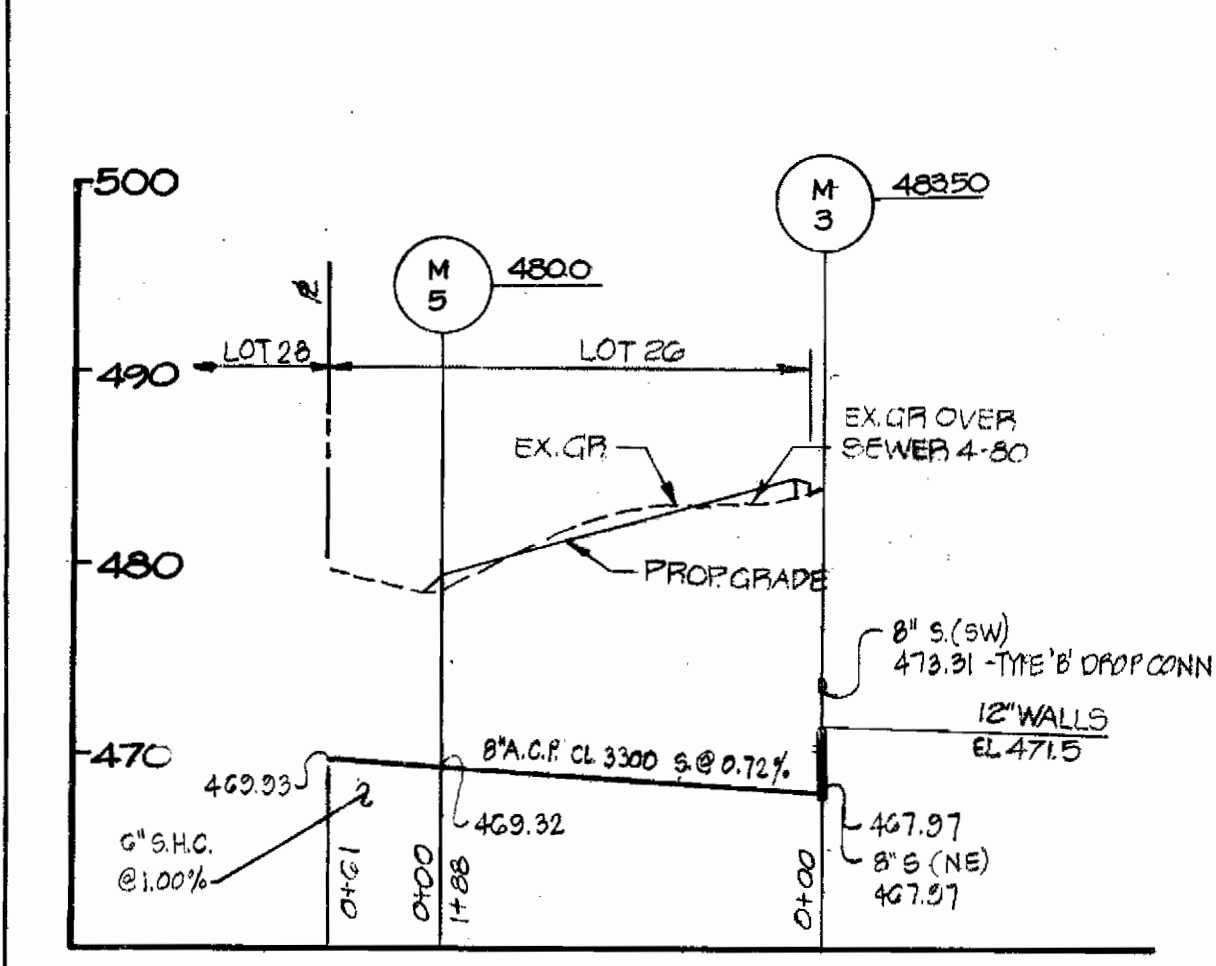


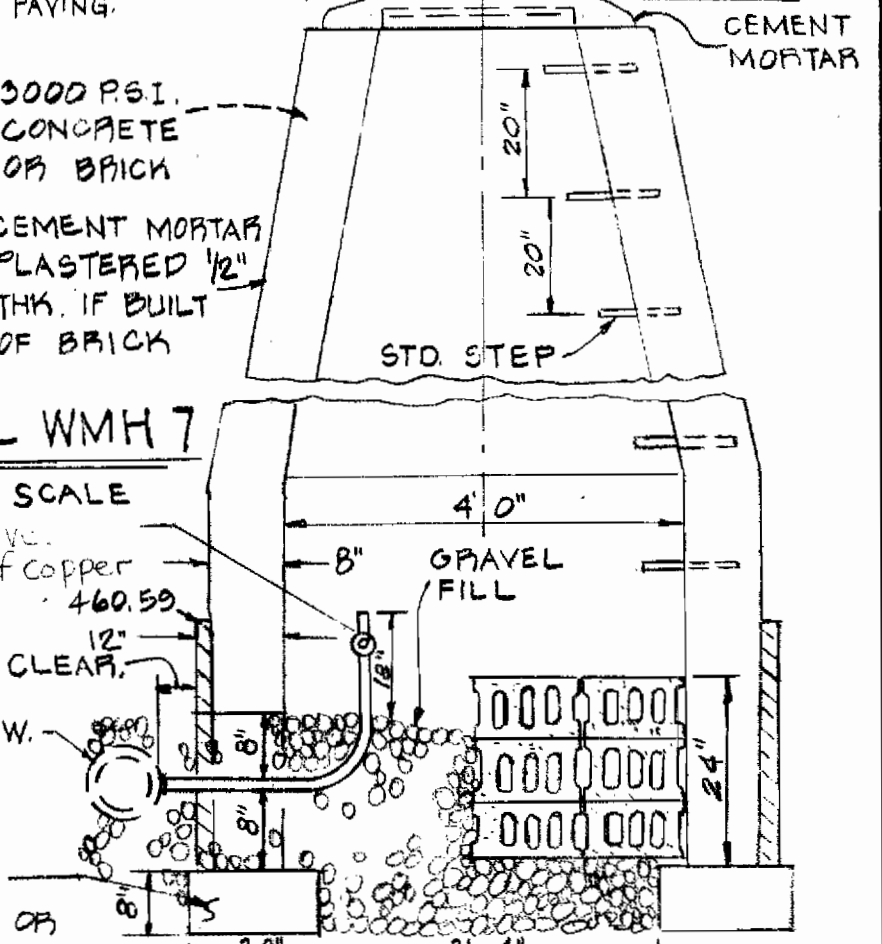
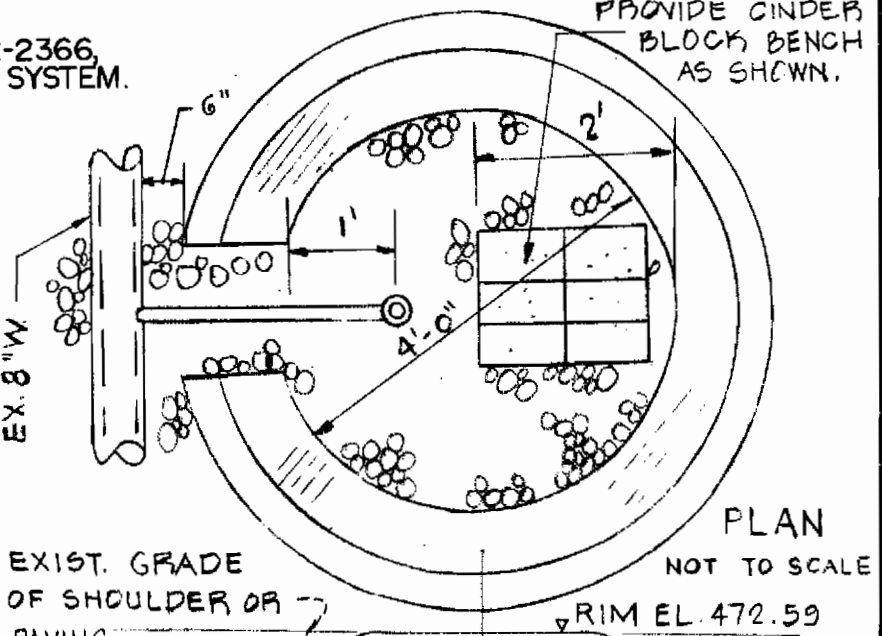
WATER AND SEWER CODE	
SEWER	7031
WATER	601

- ### GENERAL NOTES
- APPROXIMATE LOCATIONS OF EXISTING MAINS ARE SHOWN. THE CONTRACTOR SHALL TAKE ALL NECESSARY PRECAUTIONS TO PROTECT THE EXISTING MAINS AND SERVICES AND MAINTAIN UNINTERRUPTED SERVICE. ANY DAMAGE INCURRED SHALL BE REPAIRED IMMEDIATELY.
  - ALL PIPE ELEVATIONS SHOWN ARE INVERT ELEVATIONS, UNLESS OTHERWISE NOTED.
  - THE CONTRACTOR SHALL LOCATE EXISTING UTILITIES A MINIMUM OF TWO WEEKS IN ADVANCE OF CONSTRUCTION OPERATIONS IN VICINITY OF UTILITIES.
  - FOR ALL STANDARD DETAIL SEE STANDARDS BOUND IN SPECIFICATIONS.
  - ALL SEWER PIPE SHALL BE V.C.P. OR ASBESTOS CEMENT CLASS 2400 UNLESS OTHERWISE NOTED.
  - ALL MANHOLES SHALL BE 4'-0" INSIDE DIAMETER.
  - ALL WATER MAINS ARE TO BE CIP OR D.I.P. AND HAVE A MINIMUM OF 35' OF COVER.
  - BLOCK ALL FITTINGS WITH CONCRETE. SEE STANDARD DETAILS BOUND IN SPECIFICATION.
  - BURY LINE ELEVATIONS ON FIRE HYDRANTS SHALL BE SET TO ELEVATION SHOWN ON DRAWING.
  - ALL FIRE HYDRANTS SHALL BE STRAPPED AND BUTTRESSED IN ACCORDANCE WITH STANDARD DETAILS. SOIL AROUND THE FIRE HYDRANTS SHALL BE COMPACTED IN ACCORDANCE WITH SECTION 5-15 OF THE STANDARD SPECIFICATIONS.
  - CLEAR ALL UTILITIES BY A MINIMUM OF 6'-0" CLEAR ALL POLES BY 2'-0" MINIMUM OR TUNNEL AS REQUIRED.
  - THE CONTRACTOR SHALL PROVIDE A JOINT IN ALL SEWER MAINS WITHIN 2'-0" OF EXTERIOR MANHOLE WALLS.
  - THE CONTRACTOR SHALL NOTIFY THE BUREAU OF UTILITIES, HOWARD COUNTY AT 992-2366 PRIOR TO MAKING ANY TIE TO THE EXISTING SYSTEM.
  - ELEVATIONS ARE BASED UPON MARYLAND STATE DATUM. COORDINATE VALUES SHOWN ON DRAWING ARE THE MARYLAND STATE GRID SYSTEM.
  - WATER SERVICE SHALL BE FOR INSIDE METER SETTING.
  - MINIMUM CELLAR ELEVATIONS SHOWN ARE THE MINIMUM ELEVATIONS WHICH CAN BE SERVED BY SEWER MAINS.
  - THE CONTRACTOR SHALL NOTIFY THE FOLLOWING UTILITIES OR AGENCIES AT FIVE (5) DAYS BEFORE STARTING WORK SHOWN ON THESE PLANS:
    - BALTIMORE GAS AND ELECTRIC COMPANY CUSTOMER SERVICE 685-0123
    - C & P TELEPHONE COMPANY MISS UTILITY 727-9976 393-3648
  - TWIN W.H.C. SHALL BE COMPOSED OF 1" COPPER FROM THE CORPORATION TO THE "Y" BRANCH AND 5' OF 3/4" COPPER TO EACH CURB SERVICE BOX. SEE STANDARD W-50 BOUND IN SPECIFICATIONS. CURB STOP TO BE SET 5' OFF OF PROPERTY LINE.
  - NOTIFY THE BUREAU OF UTILITIES, HOWARD COUNTY, PHONE 992-2366 PRIOR TO MAKING ANY TIE ON THE EXISTING WATER AND SEWER SYSTEM.



ITEM	ESTIMATED	AS BUILT	MATERIAL SUPPLIER
8" SEWER	937 LF	977	
MANHOLES	5 EA	5	ATLANTIC PRE-CAST
6" WATER	185 LF	120	A.P.
6" VALVES (EXCL. PIPE VAL.)	0	0	A.P.
FIRE HYDRANT	1 EA	2	MH-A.P.
6" X 6" TEE	2 EA	2	A.P.
6" SEWER	616 LF	576	J.M.

TYPE OF BUILDINGS - SINGLE FAMILY DWELLING	
NUMBER OF LOTS	27
NUMBER OF WATER HOUSE CONNECTIONS	27
NUMBER OF SEWER HOUSE CONNECTIONS	27
DRAINAGE AREA: PATAPSCO	



REVIEWED FOR HOWARD S.C.D. AND MEETS TECHNICAL REQUIREMENTS.

*John M. Alan* 9-8-80  
 U.S. SOIL CONSERVATION SERVICE DATE

THIS DEVELOPMENT IS APPROVED SOIL EROSION AND SEDIMENT CONTROL BY THE HOWARD SOIL CONSERVATION DISTRICT.

*W. T. Rouse* 9-8-80  
 HOWARD SOIL CONSERVATION DISTRICT DATE

DEPARTMENT OF PUBLIC WORKS  
 HOWARD COUNTY, MARYLAND

*James M. Sloan* 9/10/80  
 DIRECTOR OF PUBLIC WORKS DATE

*William R. Rely* 9-9-80  
 CHIEF BUREAU OF ENGINEERING DATE

*James L. Klein* 9/16/80  
 CHIEF BUREAU OF UTILITIES DATE

*Walter L. Price* 9-9-80  
 CHIEF LAND DEVELOPMENT DIVISION DATE

SEDIMENT CONTROL MEASURES FOR THIS CONTRACT WILL BE IMPLEMENTED IN ACCORDANCE WITH SECTION 4 OF THE SPECIFICATIONS AND ROAD CONSTRUCTION PLAN F-80-137

BOENDER ASSOCIATES, INC.  
 ENGINEERS, PLANNERS, SURVEYORS  
 BALTIMORE, MD. SALISBURY, MD.  
 465-7777 749-1286

CONTRACT NO. 14-0918-D

PLAN AND PROFILE

ORCHARD RIDGE  
 HALE HAVEN DRIVE  
 LOTS 1 THRU 27  
 ELECTION DISTRICT NO. 6

DRAWING NO. 1 OF 1

SCALE AS SHOWN

DES: P.M.  
 DRW: W.C.L.  
 CHK: P.M.  
 78152

AS BUILT