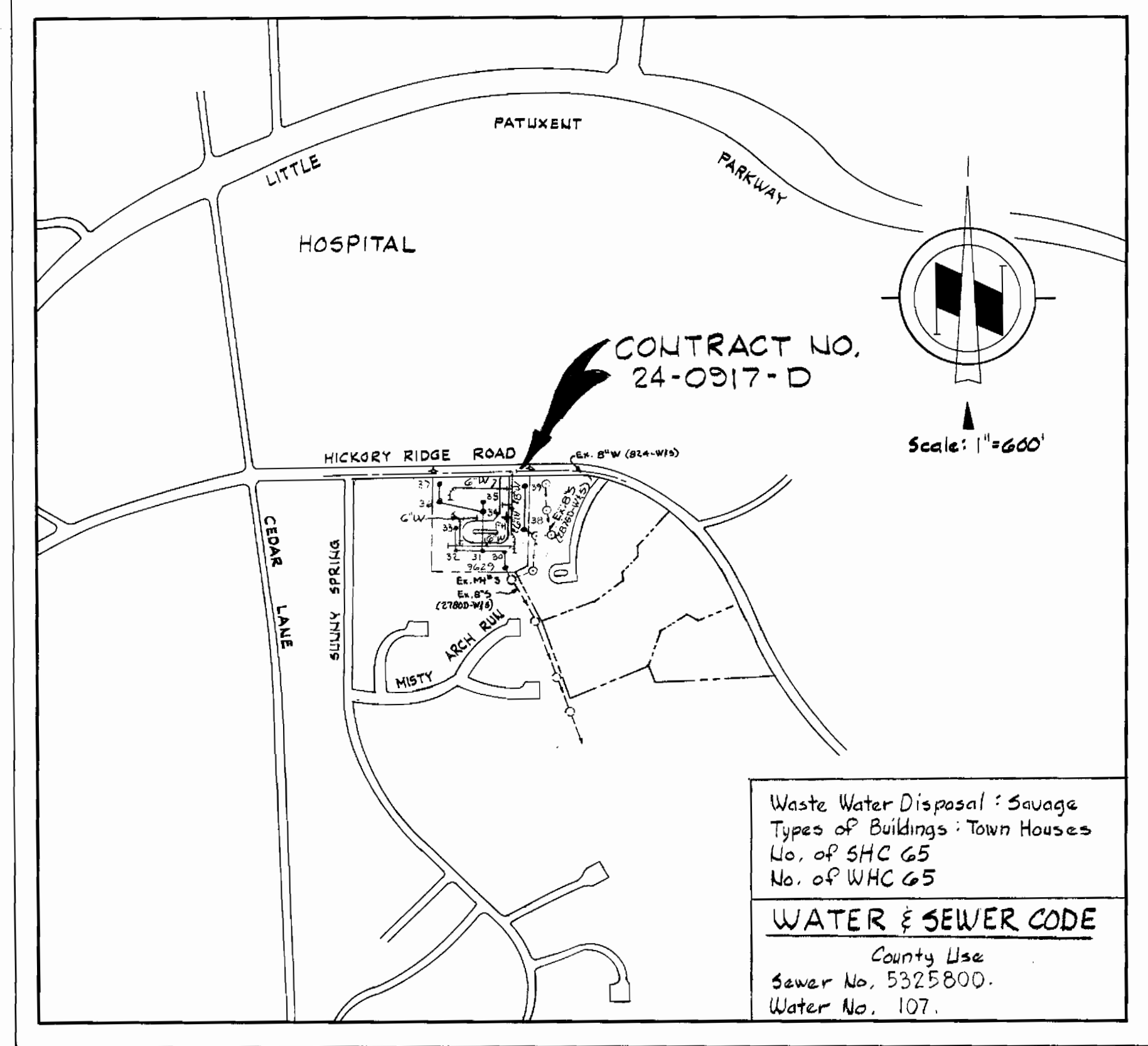


**BENCH MARKS**

- W.R.F.A. B.M. #F-9 Elev. 419.21  
a-cut on NE corner Headwall between lots 22&23, at NE Property Line, Hickory Ridge, Section 1, Area 5.
- W.R.F.A. B.M. #F-10 Elev. 411.02  
a-cut on NE corner Headwall between lots 13&14, at NE Property Line, Hickory Ridge, Section 1, Area 5.
- W.R.F.A. B.M. #F-11 Elev. 439.26  
a-cut top Pipe, 26(0) Right of Sta. 19+80 Hickory Ridge Road.



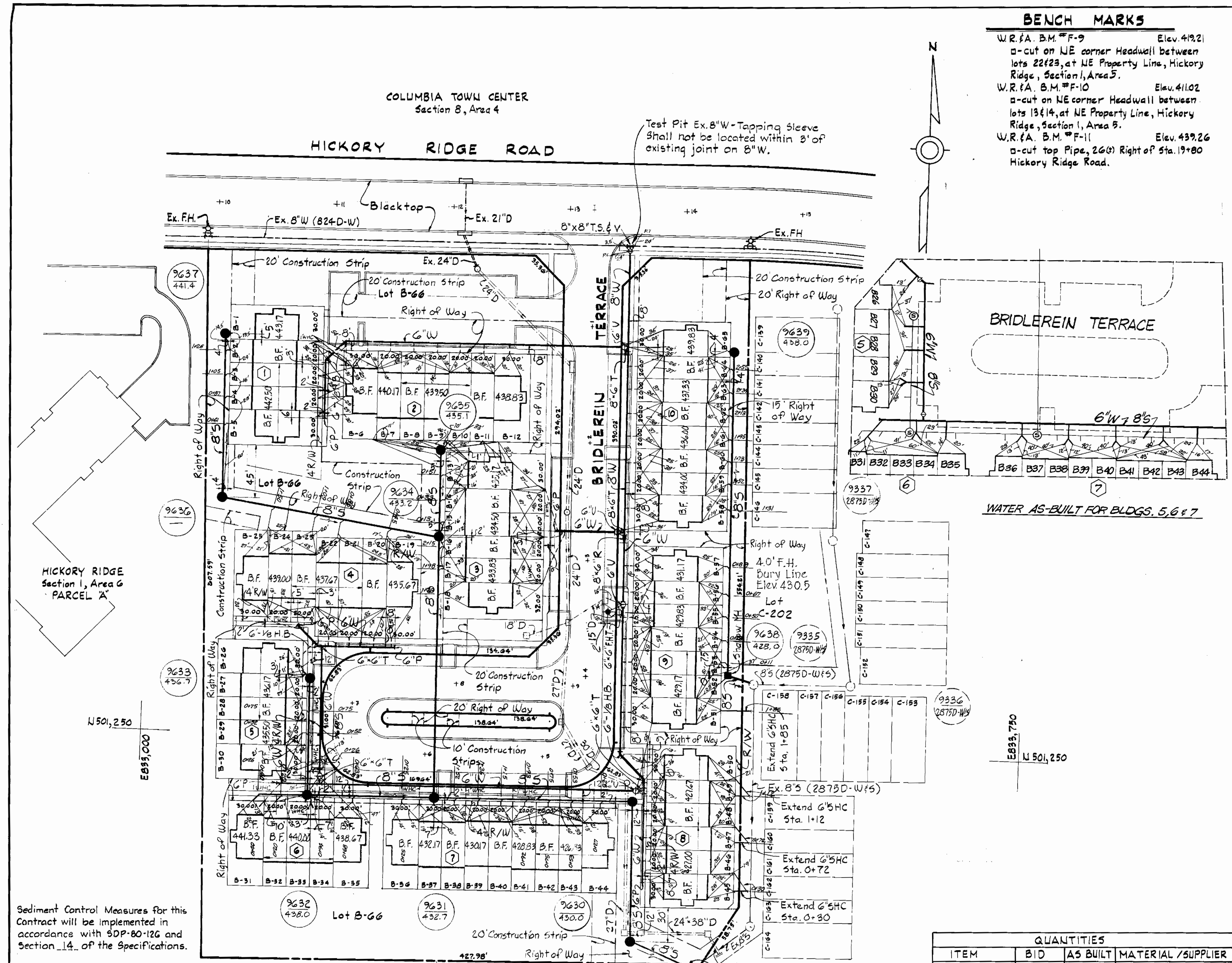
Waste Water Disposal: Sewage  
Types of Buildings: Town Houses  
No. of SHC 65  
No. of WHC 65  
**WATER & SEWER CODE**  
County Use  
Sewer No. 5325800.  
Water No. 107.

**VICINITY MAP**

**GENERAL NOTES**

- APPROXIMATE LOCATION OF EXISTING MAINS ARE SHOWN. THE CONTRACTOR SHALL TAKE ALL NECESSARY PRECAUTIONS TO PROTECT EXISTING MAINS AND SERVICES AND MAINTAIN UNINTERRUPTED SUPPLY. ANY DAMAGE INCURRED SHALL BE REPAIRED IMMEDIATELY.
- ALL PIPE ELEVATIONS SHOWN ARE INVERT ELEVATIONS.
- THE CONTRACTOR SHALL LOCATE EXISTING UTILITIES A MINIMUM OF TWO WEEKS IN ADVANCE OF CONSTRUCTION OPERATIONS IN VICINITY OF UTILITIES.
- THE CONTRACTOR SHALL NOTIFY THE FOLLOWING UTILITIES OR AGENCIES AT LEAST FIVE DAYS BEFORE STARTING WORK SHOWN ON THESE PLANS:  
BALTIMORE GAS AND ELECTRIC COMPANY - UNDERGROUND ELECTRIC DISTRIBUTION ENGINEERING DAMAGE CONTROL 234-5691  
UNDERGROUND GAS DISTRIBUTION ENGINEERING 234-5621  
CHESAPEAKE AND POTOMAC TELEPHONE COMPANY 393-3648.  
MISS UTILITY - 1 - 559-0100
- FOR ALL STANDARD DETAILS SEE STANDARDS BOUND IN SPECIFICATIONS.
- ALL HORIZONTAL AND VERTICAL CONTROLS ARE BASED ON MARYLAND STATE DATUM.
- CLEAR ALL UTILITIES BY A MINIMUM OF 6".
- BLOCK ALL FITTINGS WITH CONCRETE, SEE STANDARDS BOUND IN SPECIFICATIONS.
- ALL WATER MAINS SHALL HAVE A MINIMUM OF 3 1/2" COVER.
- ALL WATER MAINS SHALL BE C.I.P. OR D.I.P. UNLESS OTHERWISE NOTED.
- ALL VALVES SHALL BE STRAPPED TO TEES WHERE APPLICABLE IN ACCORDANCE WITH THE STANDARD DETAILS.
- ALL FIRE HYDRANTS SHALL BE STRAPPED AND BUTTRESSED IN ACCORDANCE WITH THE STANDARD DETAILS. SOIL AROUND THE HYDRANTS SHALL BE COMPACTED IN ACCORDANCE WITH SECTION 5-15 OF THE STANDARD SPECIFICATIONS.
- PAYMENT FOR STRAPPING FIRE HYDRANTS AND VALVES WILL BE INCLUDED IN UNIT PRICE BID FOR FURNISHING AND LAYING WATER MAINS.
- BURY LINE ELEVATIONS ON FIRE HYDRANTS SHALL BE SET TO THE ELEVATIONS SHOWN ON THE DRAWINGS.
- ALL W.H.C.'S. SHALL BE 3/4" DIAMETER UNLESS OTHERWISE NOTED.
- WATER SERVICES SHALL BE FOR INSIDE METER SETTINGS.
- ALL SEWER MAINS SHALL BE C.S.P.X., V.C.P.X. OR A.C.P. CLASS 2400 UNLESS OTHERWISE NOTED.
- ALL MANHOLES SHALL BE 4'-0" INSIDE DIAMETER.
- THE CONTRACTOR SHALL PROVIDE A JOINT IN ALL SEWER MAINS WITHIN 2'-0" OF EXTERIOR MANHOLE WALLS.
- TREES ARE TO BE PROTECTED FROM DAMAGE TO MAXIMUM EXTENT. TREES LOCATED WITHIN THE CONSTRUCTION STRIP ARE NOT TO BE REMOVED OR DAMAGED BY THE CONTRACTOR.

ITEM	BID	AS BUILT	MATERIAL / SUPPLIER
8" Sewer	1460 LF	1460 LF	VCPX-LOGANCLAY PIPE PROD
Manholes	70 V.F.	70 V.F.	PRECAST CONC. - ATLANTIC
8" Water	250 LF	250 LF	GRIFFIN DUCTILE IRON
6" Water	1220 LF	1220 LF	" " "
8" Valves	1	1	M&H
6" V (Excluding F.H.V.)	5	5	M&H
Fire Hydrants	1	1	DRESSER - M&H

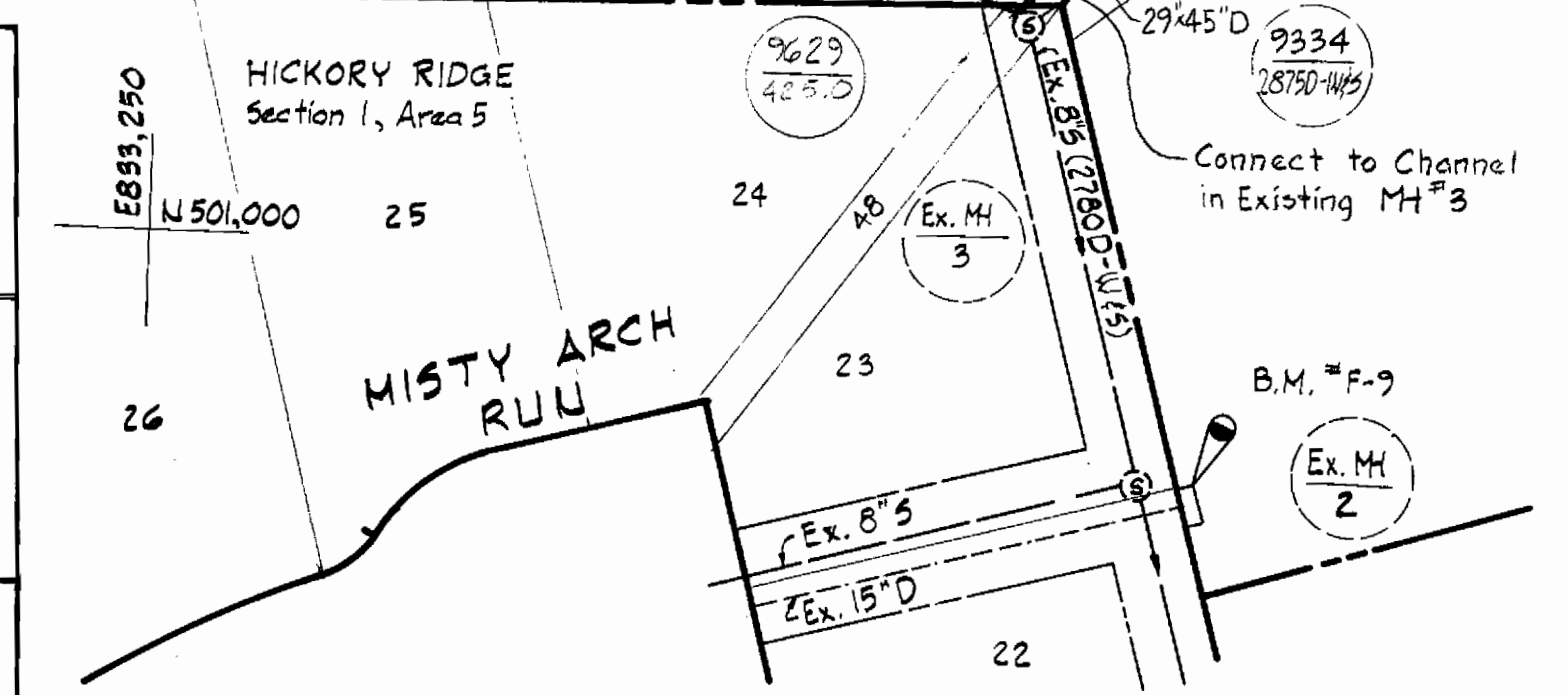


Sediment Control Measures for this Contract will be implemented in accordance with SDP-80-12G and Section 14 of the Specifications.

REVIEWED FOR HOWARD SOIL CONSERVATION DISTRICT AND MEETS TECHNICAL REQUIREMENT  
*James M. Wilson* 6/6/80  
SIGNATURE DATE  
US SOIL CONSERVATION SERVICE

This Development Plan is approved for Soil Erosion and Sediment Control by the Howard County Conservation District  
APPROVED: *William J. Howe* 6/16/80  
HOWARD C.C.D. DATE

DEPARTMENT OF PUBLIC WORKS  
HOWARD COUNTY, MARYLAND  
*James M. Wilson* 6/12/80  
CHIEF-BUREAU OF PUBLIC WORKS - DATE  
*William J. Howe* 6/16/80  
CHIEF-BUREAU OF UTILITIES - DATE  
*William J. Howe* 6/16/80  
CHIEF-LAND DEVELOPMENT DIVISION - DATE



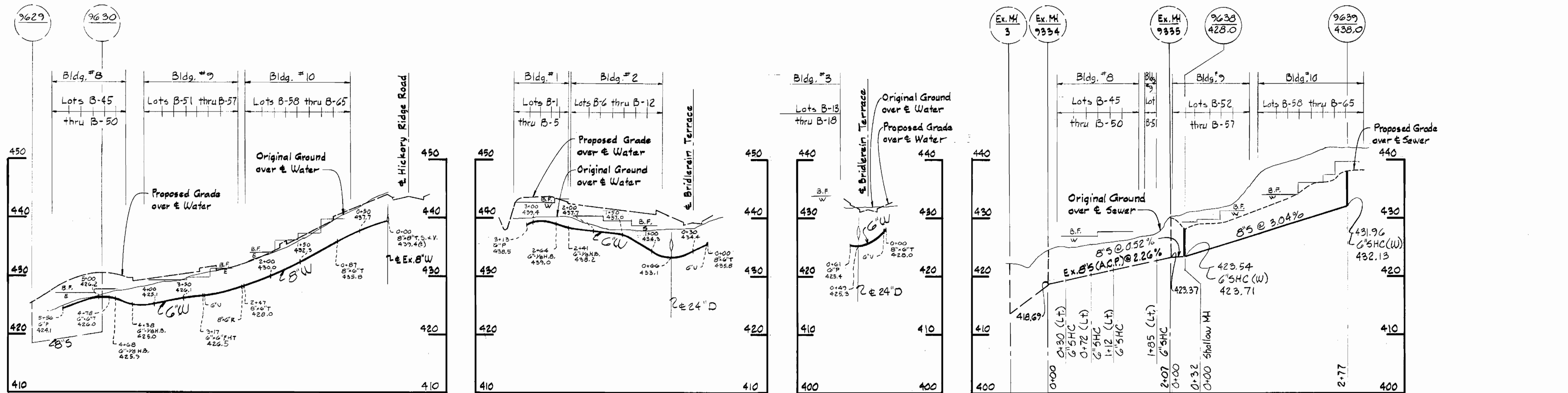
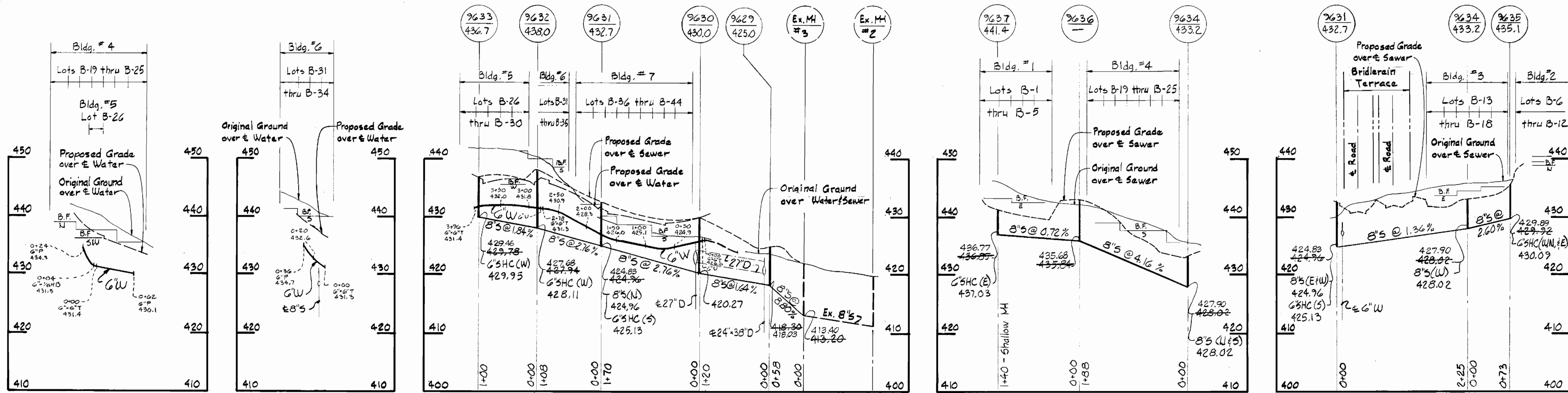
WHITMAN REQUARDT & ASSOCIATES  
ENGINEERS  
1304 ST. PAUL ST.  
BALTIMORE, MARYLAND

CONTRACT NO. 24-0917-D

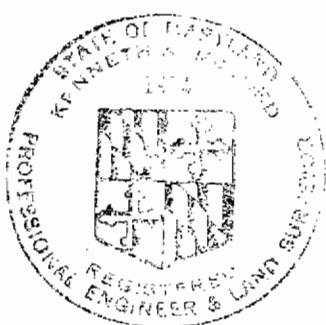
PLAN OF  
WATER & SEWER DRAINS

COLUMBIA  
VILLAGE OF HICKORY RIDGE  
ELECTION DISTRICT - CLARKVILLE NO. 5

DRAWING NO. 1 OF 2 SCALE AS SHOWN 35-501-8945



Note:  
Original Ground over Water and Sewer was taken from Aerial Photography prepared by Maps Incorporated and verified by field survey in February, 1980.



*Kenneth J. Milrod*

Hickory Ridge  
Section 1, Area G  
Parcel B  
Lots B-1 thru B-67  
Contract No. 24-0917-D

DEPARTMENT OF PUBLIC WORKS  
HOWARD COUNTY, MARYLAND

*James L. Glick* 6-17-80  
DIRECTOR OF PUBLIC WORKS - DATE

*William J. Smith* 6-17-80  
CHIEF-BUREAU OF ENGINEERING - DATE

*James L. Glick* 6-17-80  
CHIEF-BUREAU OF UTILITIES - DATE

*William J. Smith* 6-17-80  
CHIEF-LAND DEVELOPMENT DIVISION - DATE

WHITMAN REQUARDT & ASSOCIATES  
ENGINEERS  
1304 ST. PAUL ST.  
BALTIMORE, MARYLAND

CONTRACT NO. 24-0917-D

PROFILES OF  
WATER & SEWER DRAINS

COLUMBIA  
VILLAGE OF HICKORY RIDGE  
ELECTION DISTRICT - CLARKSVILLE NO.5

DRAWING NO. 2	SCALE H: 1"=100'
OF 2	V: 1"=10'