

BENCH MARKS :

BM #1, Elevation 345.39, RR Spike in G & E Pole #46825
 BM #2, Elevation 342.24, RR Spike in G & E Pole #46827
 BM #3, Elevation 333.57, RR Spike in G & E Pole #46830

QUANTITIES

ITEM	ESTIMATED	AS BUILT	MATERIAL/SUPPLIER
8" Sewer	1415 LF	1299 LF	CertainTeed (PVC)
Manholes	49 V.F.	47.2 V.F.	Atlantic Concrete Products Corp.
6" SHC	54 LF	54 LF	CertainTeed (PVC)

TYPE OF BUILDING	Residential
NUMBER OF LOTS	2
NUMBER OF WATER HOUSE CONNECTIONS	N/A
NUMBER OF SEWER HOUSE CONNECTIONS	3
DRAINAGE AREA	Savage

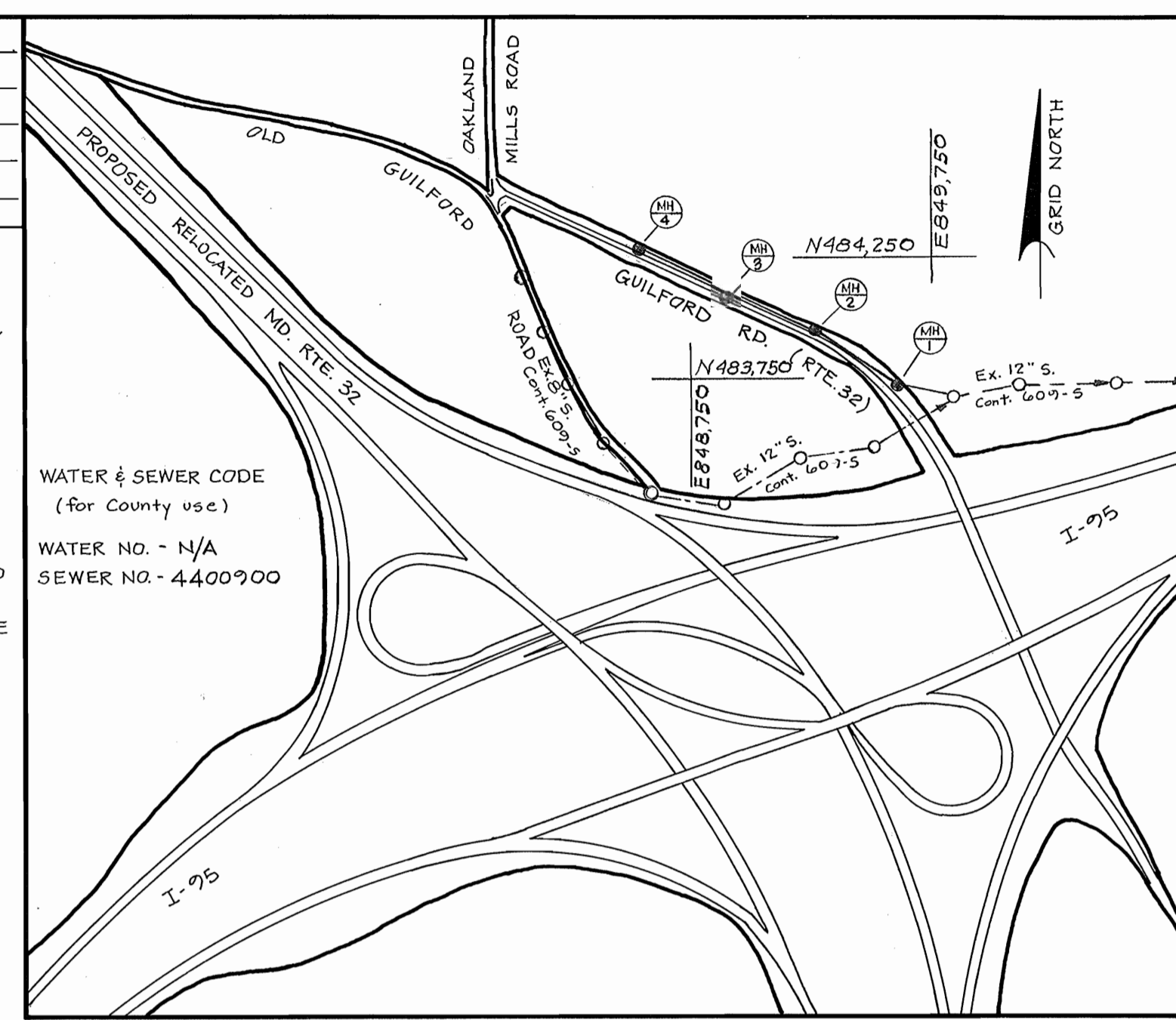
GENERAL NOTES :

- APPROX. LOCATIONS OF EXISTING UTILITIES ARE SHOWN. THE CONTRACTOR SHALL TAKE ALL NECESSARY PRECAUTIONS TO PROTECT EXISTING UTILITIES AND SERVICES AND TO MAINTAIN UNINTERRUPTED SERVICES. ANY DAMAGE INCURRED SHALL BE REPAIRED IMMEDIATELY TO THE SATISFACTION OF THE ENGINEER, AT THE CONTRACTOR'S EXPENSE.
- ALL PIPE ELEVATIONS ARE INVERT ELEVATIONS.
- CONTRACTOR SHALL LOCATE EXISTING UTILITIES (A MINIMUM OF TWO [2] WEEKS) IN ADVANCE OF CONSTRUCTION OPERATIONS IN THE VICINITY OF PROPOSED UTILITIES.
- ALL VERTICAL CONTROLS ARE BASED ON U.S.G.S. DATUM.
- CLEAR ALL UTILITIES BY A MIN. OF 6". CLEAR ALL POLES BY A 2'-0" MIN. OR TUNNEL AS REQUIRED. ANY COSTS INCURRED BY THE CONTRACTOR FOR TUNNELING OR BRACING POLES SHALL BE INCLUDED IN THE UNIT PRICE BID FOR EXCAVATION AND BACKFILL.
- THE CONTRACTOR SHALL PROVIDE A JOINT IN ALL SEWER MAINS WITHIN 2'-0" OF EXTERIOR MANHOLE WALLS.
- ALL MANHOLES SHALL BE 4'-0" INSIDE DIAMETER UNLESS OTHERWISE NOTED.
- CONTRACTOR SHALL REMOVE TREES, STUMPS AND ROOTS ALONG LINE OF EXCAVATION AS DIRECTED BY THE ENG. PAYMENT FOR SUCH REMOVAL SHALL BE INCLUDED IN THE UNIT PRICE BID FOR EXCAVATION AND BACKFILL.
- PLACE REGULATION "MEN WORKING" AND "WARNING" SIGNS AS REQUIRED TO COMPLY WITH MD. STATE HIGHWAY ADMIN. MANUAL OF TRAFFIC CONTROL FOR HIGHWAY CONSTRUCTION AND MAINTENANCE OPERATIONS.
- ALL HORIZONTAL CONTROLS ARE BASED ON MD. STATE COORDINATES.
- ALL SEWER MAINS SHALL BE C.S.P., V.C.P. OR A.C.P. CLASS 2400 UNLESS OTHERWISE NOTED.
- FOR DETAILS NOT SHOWN ON THE DRAWINGS USE HO. CO. STD. DETAILS.
- FOR MATERIALS AND CONSTRUCTION METHODS USE HO. CO. STD. SPECIFICATIONS.
- TREES ARE TO BE PROTECTED FROM DAMAGE TO MAX. EXTENT. TREES LOCATED WITHIN THE CONSTRUCTION STRIP ARE NOT TO BE REMOVED OR DAMAGED BY THE CONTRACTOR.
- CONTRACTOR SHALL NOTIFY THE FOLLOWING UTILITIES OR AGENCIES AT LEAST FIVE (5) WORKING DAYS BEFORE STARTING WORK SHOWN ON THESE PLANS :

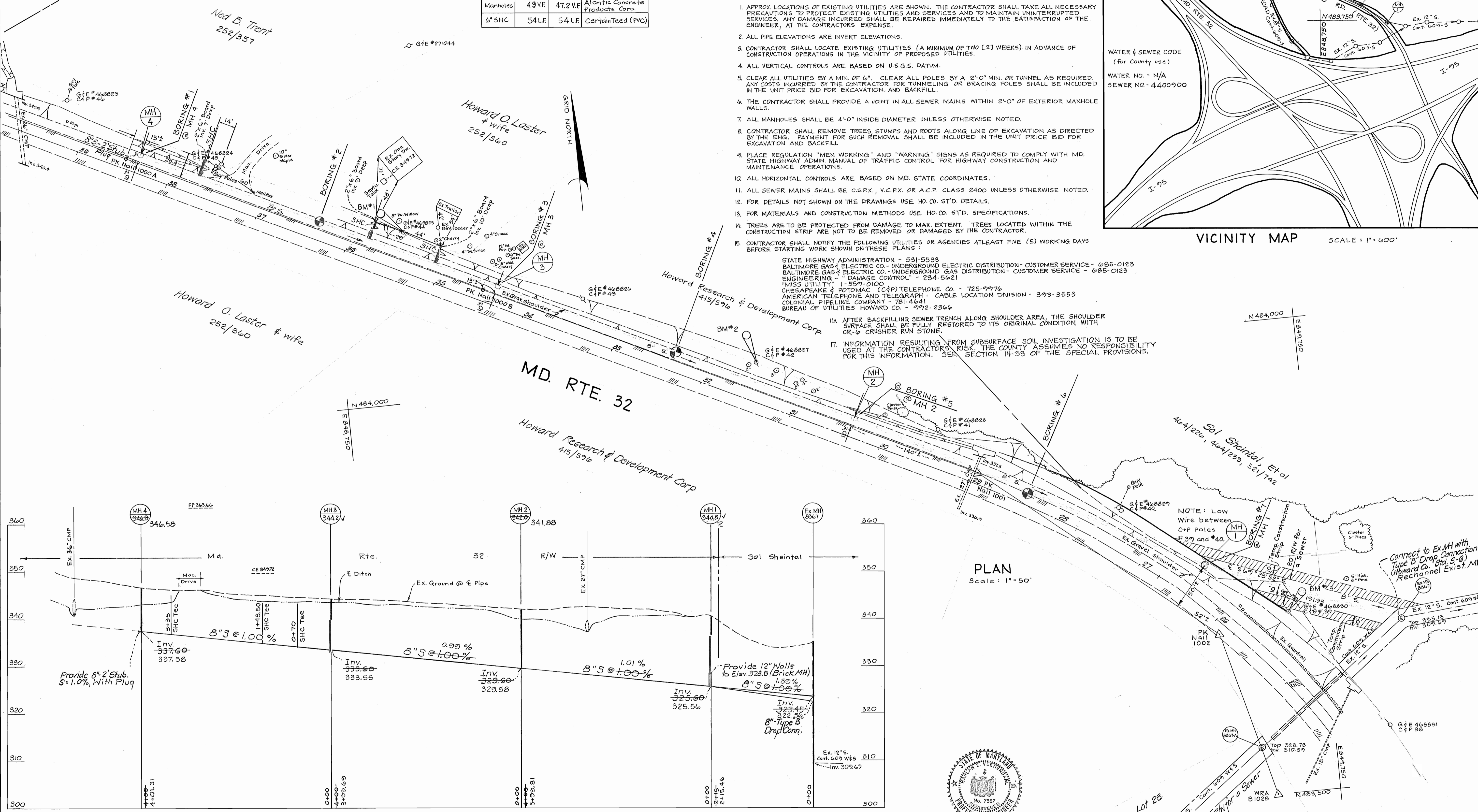
STATE HIGHWAY ADMINISTRATION - 531-5533
 BALTIMORE GAS & ELECTRIC CO. - UNDERGROUND ELECTRIC DISTRIBUTION - CUSTOMER SERVICE - 685-0123
 BALTIMORE GAS & ELECTRIC CO. - UNDERGROUND GAS DISTRIBUTION - CUSTOMER SERVICE - 685-0123
 ENGINEERING - "DAMAGE CONTROL" - 234-5621
 "MISS UTILITY" - 1-557-0100
 CHESAPEAKE & POTOMAC (C&P) TELEPHONE CO. - 725-7976
 AMERICAN TELEPHONE AND TELEGRAPH - CABLE LOCATION DIVISION - 373-3553
 COLONIAL PIPELINE COMPANY - 781-4641
 BUREAU OF UTILITIES HOWARD CO. - 772-2344

16. AFTER BACKFILLING SEWER TRENCH ALONG SHOULDER AREA, THE SHOULDER SURFACE SHALL BE FULLY RESTORED TO ITS ORIGINAL CONDITION WITH CR-6 CRUSHER RUN STONE.

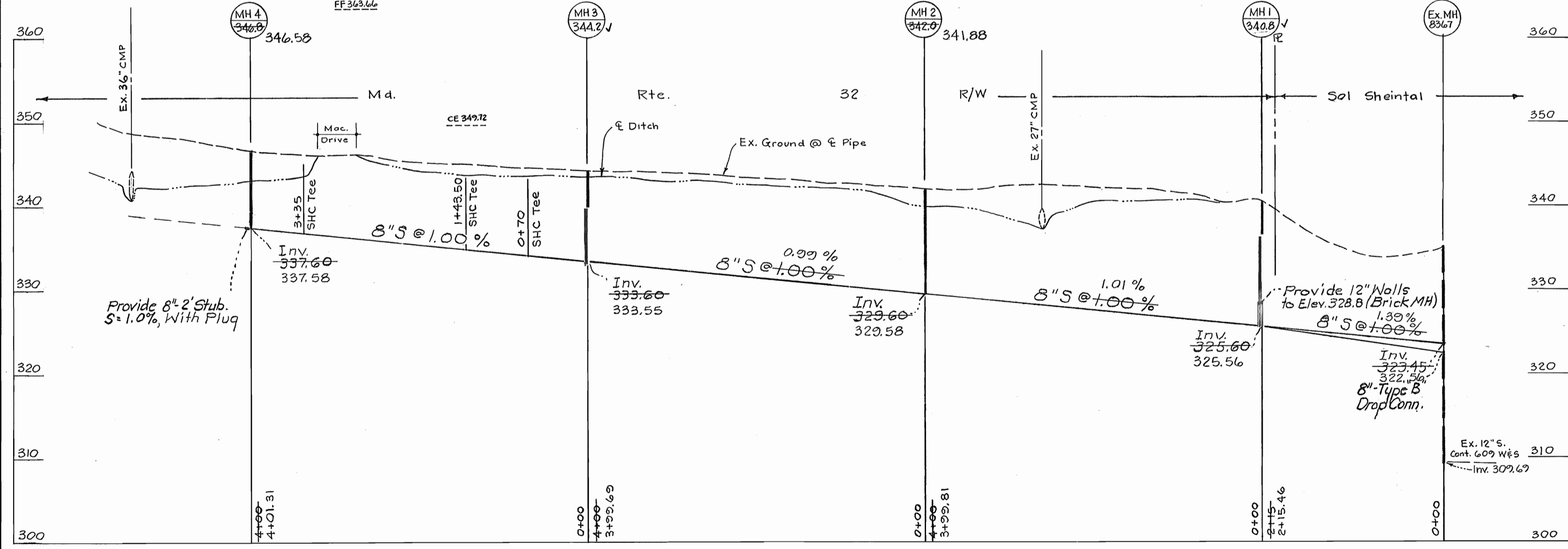
17. INFORMATION RESULTING FROM SUBSURFACE SOIL INVESTIGATION IS TO BE USED AT THE CONTRACTOR'S RISK. THE COUNTY ASSUMES NO RESPONSIBILITY FOR THIS INFORMATION. SEE SECTION 14-33 OF THE SPECIAL PROVISIONS.



VICINITY MAP SCALE: 1" = 600'



PLAN Scale: 1" = 50'



SEWER PROFILE Scale: Horiz. 1" = 100' Vert. 1" = 10'

DEPARTMENT OF PUBLIC WORKS
 HOWARD COUNTY, MARYLAND
 James L. Blair, CHIEF, BUREAU OF UTILITIES
 Richard P. Browne ASSOCIATES
 ENGINEERS SURVEYORS PLANNERS ARCHITECTS
 COLUMBIA, MD.
 Wilde Lake Village Green Suite 207

DEPARTMENT OF PUBLIC WORKS
 HOWARD COUNTY, MARYLAND
 James F. Neuman, DIRECTOR OF PUBLIC WORKS
 CONTRACT NO. 20-0907
 Capital Project No. S-7-6074

PLAN & PROFILE
 SEWER EXTENSION
 H. E. Ureandaol, PROFESSIONAL ENGINEER
 No. 7307
 5-23-80

GUILFORD SEWER
 6th ELECTION DISTRICT
 HOWARD COUNTY, MD.

DRAWING NO. 1 OF 1
 SCALE: As shown
 DES: F.M.S.
 DRAWN: M.K.
 CHK: H.E.V.
 DATE: 5-23-80

AS BUILT December 12, 1980