

GENERAL NOTES CONTINUED

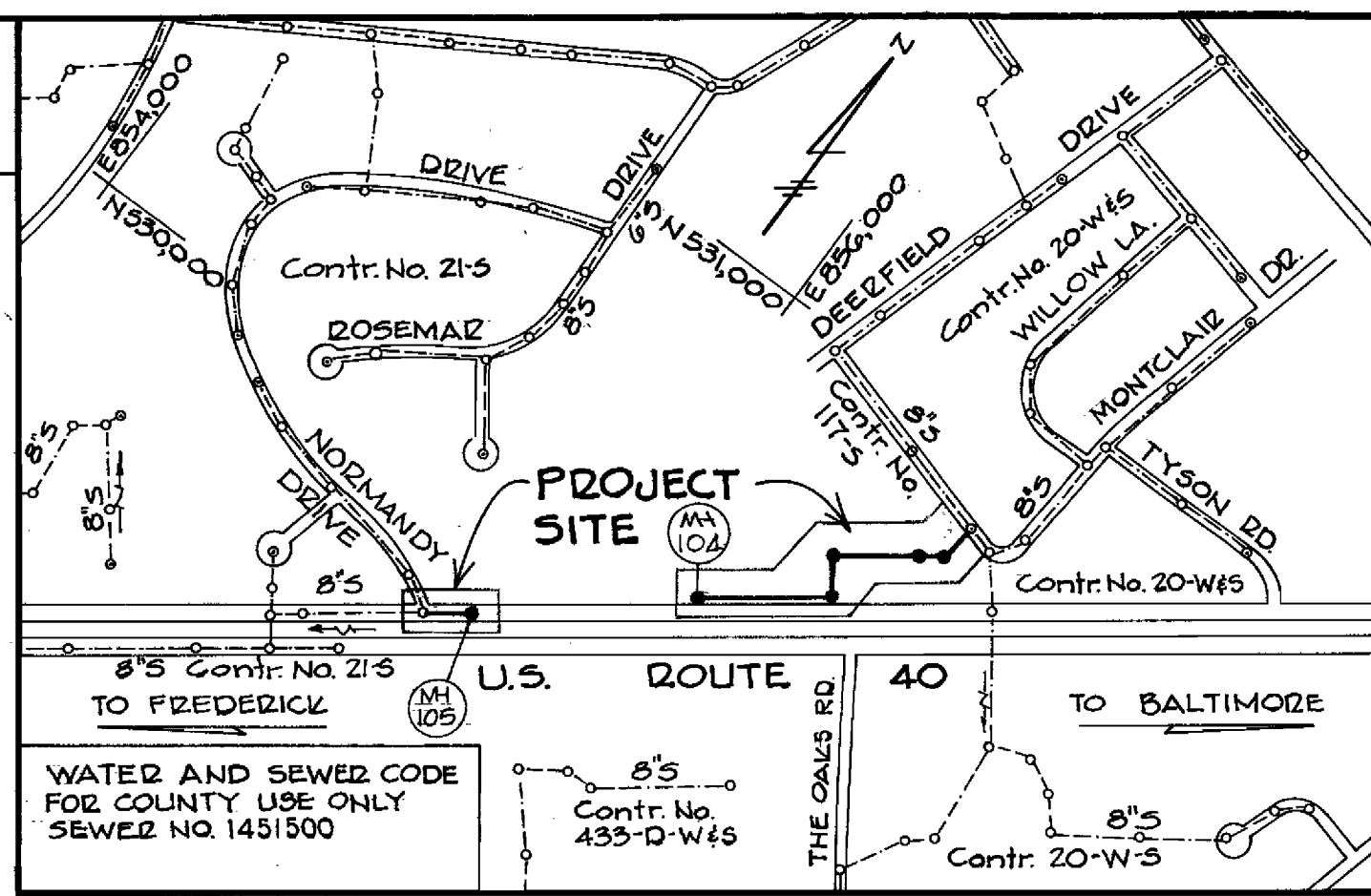
15. The Contractor shall notify the following utilities and agencies at least five (5) working days before starting work on shown on these plans.
- State Highway Administration - 531-5533
 - Baltimore Gas and Electric Company - Underground Electric Distribution Customer Service - 685-0123
 - Baltimore Gas and Electric Company - Underground Gas Distribution Customer Service - 685-0123
 - Engineering - "Damage Control" - 234-5621
 - "Miss Utility" - 1-559-0100
 - Chesapeake and Potomac (C&P) Telephone Company - 725-9976
 - American Telephone and Telegraph - Cable Location Division - 393-3553
 - Colonial Pipeline Company - 781-4641
 - Bureau of Utilities - Howard County - 992-2366

16. For materials and construction methods, use Howard County Standard Specifications.

BENCH MARK
 B.M. "F4" Elev. 394.62
 Cross Cut in roadside bonnet bolt 75'± East of P.I. 3+10
 B.M. "MH 226" Elev. 412.55
 X-cut in rim 21'± West of P.I. A-1

Type of Buildings Served- RE/COMM.
 Number of Lots Served - 6
 Number of Sewer House Connections-3

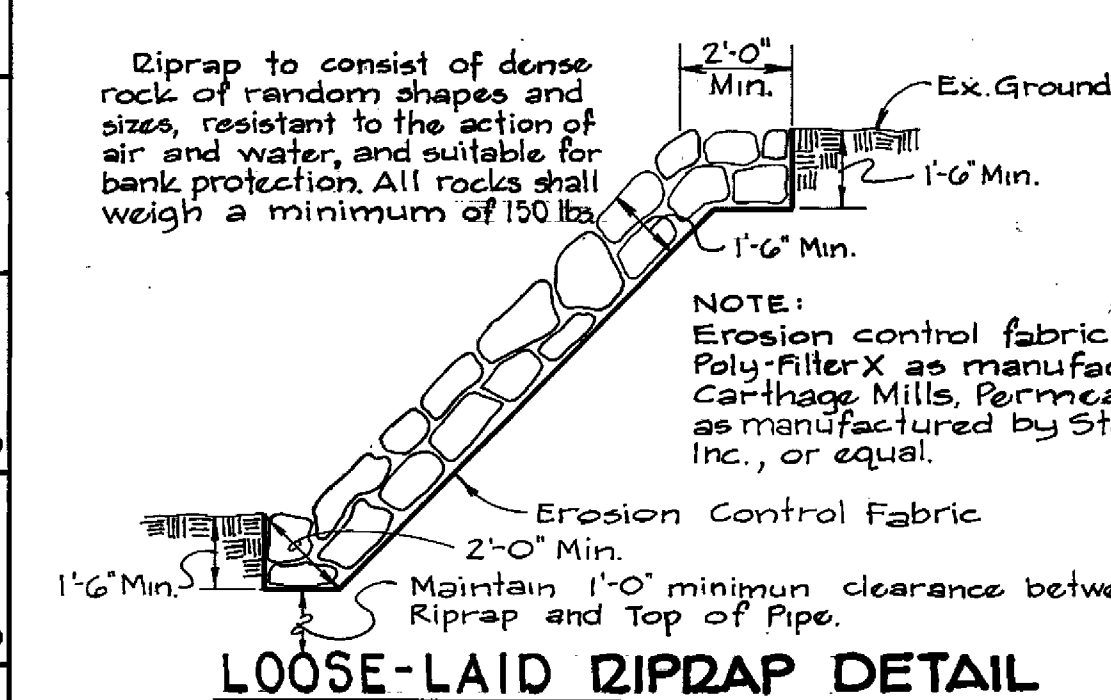
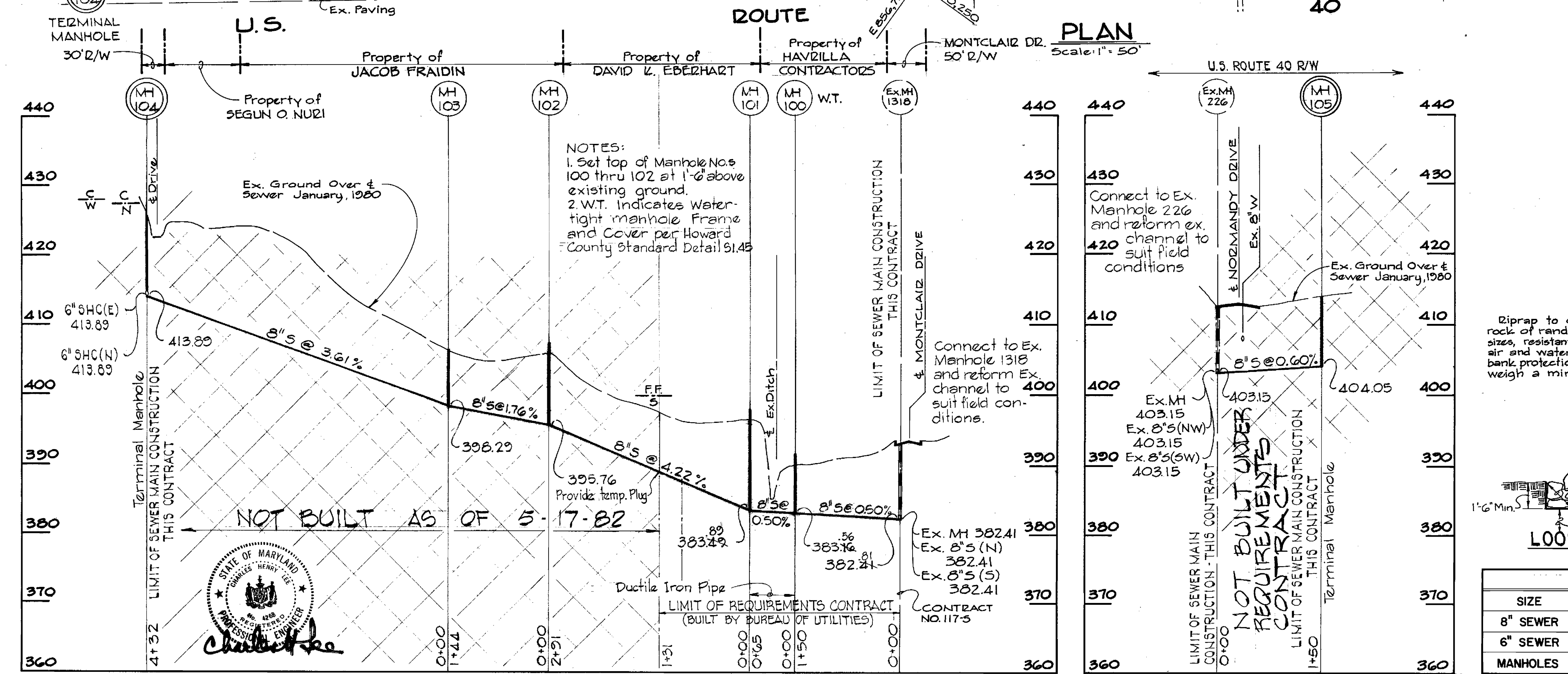
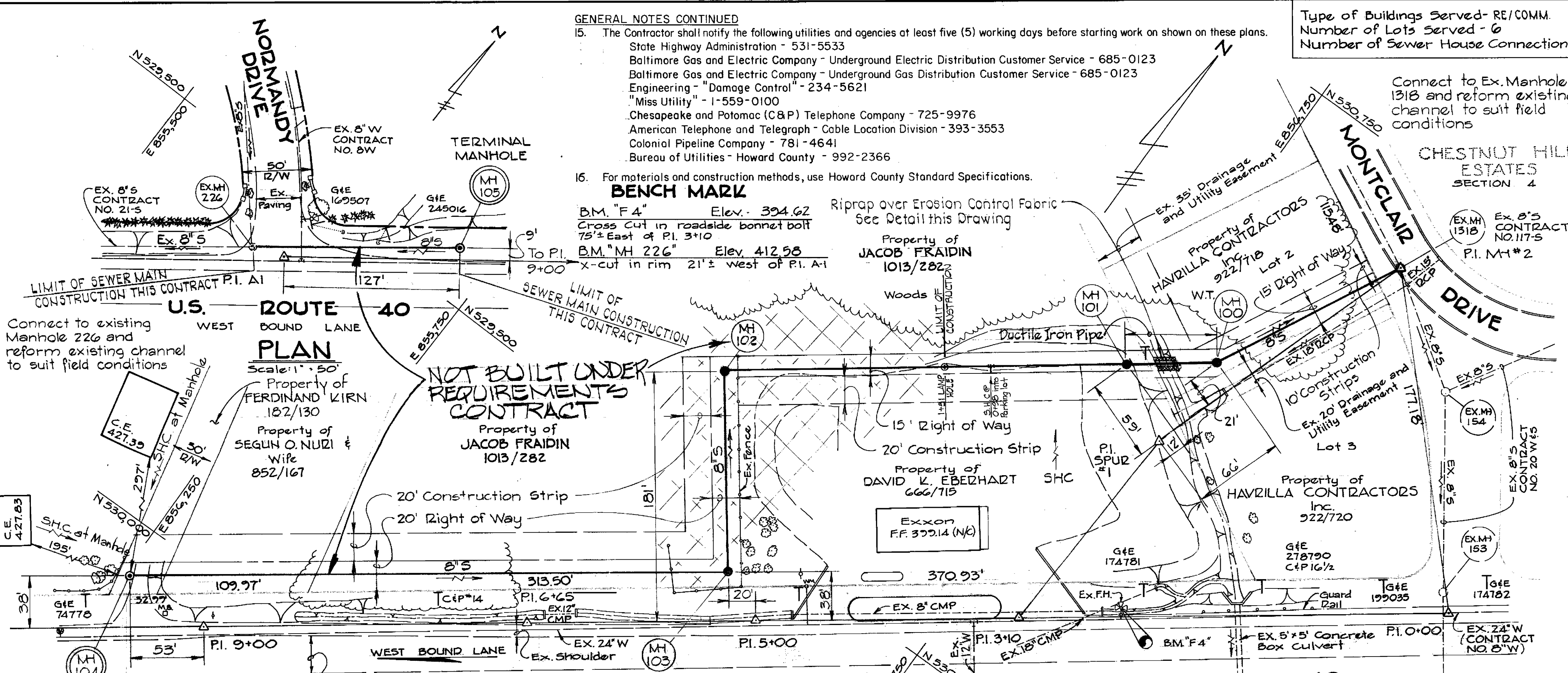
Connect to Ex. Manhole 1318 and reform existing channel to suit field conditions



VICINITY MAP
 Scale: 1"=600'

GENERAL NOTES

- The approximate locations of existing utilities are shown. The Contractor shall take all necessary precautions to protect the existing utilities and to maintain uninterrupted service. Any damage incurred due to the Contractor's operation shall be repaired immediately at the Contractor's expense.
- All horizontal controls are based on Maryland State Coordinates.
- All vertical controls are based on U.S.G.S. Datum.
- All pipe elevations shown are invert elevations.
- All utilities shall be cleared by a minimum of 6" vertically. All utility poles shall be cleared by a minimum of 2'-0" horizontally or tunneled if required. Cost for tunneling or bracing poles shall be included in the unit prices bid for excavation and backfill for sewer mains.
- For all standard details, use Howard County Standard Details.
- The Contractor shall locate existing utilities in advance of construction operations in the vicinity of proposed utilities.
- Trees shall be protected from damage to the maximum extent. Trees located within construction strips shall not be removed or damaged by the Contractor.
- The Contractor shall remove trees, stumps, and roots along the line of excavation as directed by the Engineer. The cost for such removal shall be included in the unit prices bid for excavation and backfill for sewer mains.
- The Contractor shall place regulation "Men Working" and warning signs as required to comply with Maryland State Highway Administration Manual of Traffic Control for Highway Construction and Maintenance Operations.
- All sewer mains shall be C.S.P.X., V.C.P.X., P.V.C., H.D.P.E., D.I.P., C.T.P., or A.C.P. d.2400 unless otherwise noted.
- The Contractor shall provide a joint in all sewer mains within 2'-0" of the manhole exterior walls.
- All manholes shall be 4'-0" inside diameter, unless otherwise noted.
- Manholes designated W.T. in plan and profile shall have watertight frames and covers. Where watertight frame and cover is used, set top of frame 1'-6" above finished grade.



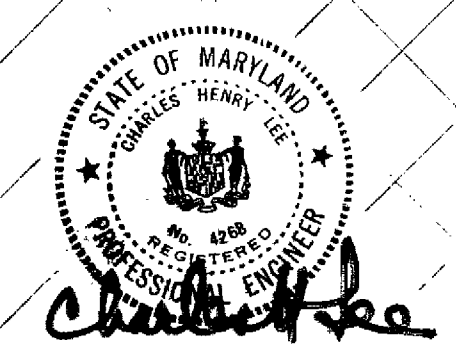
NOTE: Riprap to consist of dense rock of random shapes and sizes, resistant to the action of air and water, and suitable for bank protection. All rocks shall weigh a minimum of 150 lbs.

NOTE: Erosion control fabric shall be Poly-Filler-X as manufactured by Carthage Mills, Permacaliner M-195 as manufactured by Staff Industries Inc., or equal.

NOTE: Maintain 1'-0" minimum clearance between Riprap and Top of Pipe.

QUANTITIES			
SIZE	ESTIMATED	"AS BUILT"	SUPPLIER
8" SEWER	1235 L.F.	*336 L.F.	ACP/CertainTeed
6" SEWER	25 L.F.	5'	ACP/CertainTeed
MANHOLES	6 EA	2 EA	Atlantic Precast

* 61' L.F. D.I.P. + 265' L.F. ACP. = 326' L.F. Total.



PURDUM & JESCHKE
 ENGINEERS
 1023 N. CALVERT ST.
 BALTIMORE, MARYLAND

DEPARTMENT OF PUBLIC WORKS
 HOWARD COUNTY, MARYLAND
 CHIEF-BUREAU OF UTILITIES
 DATE 10-19-81
 DIRECTOR OF PUBLIC WORKS-DATE 10-19-81
 CHIEF-BUREAU OF ENGINEERING-DATE

CONTRACT NO. 10-0905
 CAPITAL PROJECT NO. S-8-6100

PLAN AND PROFILE
 FOR
 SEWER MAIN

REV. NO.	REV. DATE	REVISION DESCRIPTION
1	10-16-81	CHANGE CONC. ENCASUREMENT TO D.I.P., MH TO MH

ROUTE 40 COLLECTOR SEWER
 ELECTION DISTRICT NO. 2
 HOWARD COUNTY, MARYLAND

DRAWING NO. 1 OF 1
 SCALE AS SHOWN
 Designed PWR
 Drafted PWR
 Checked REP