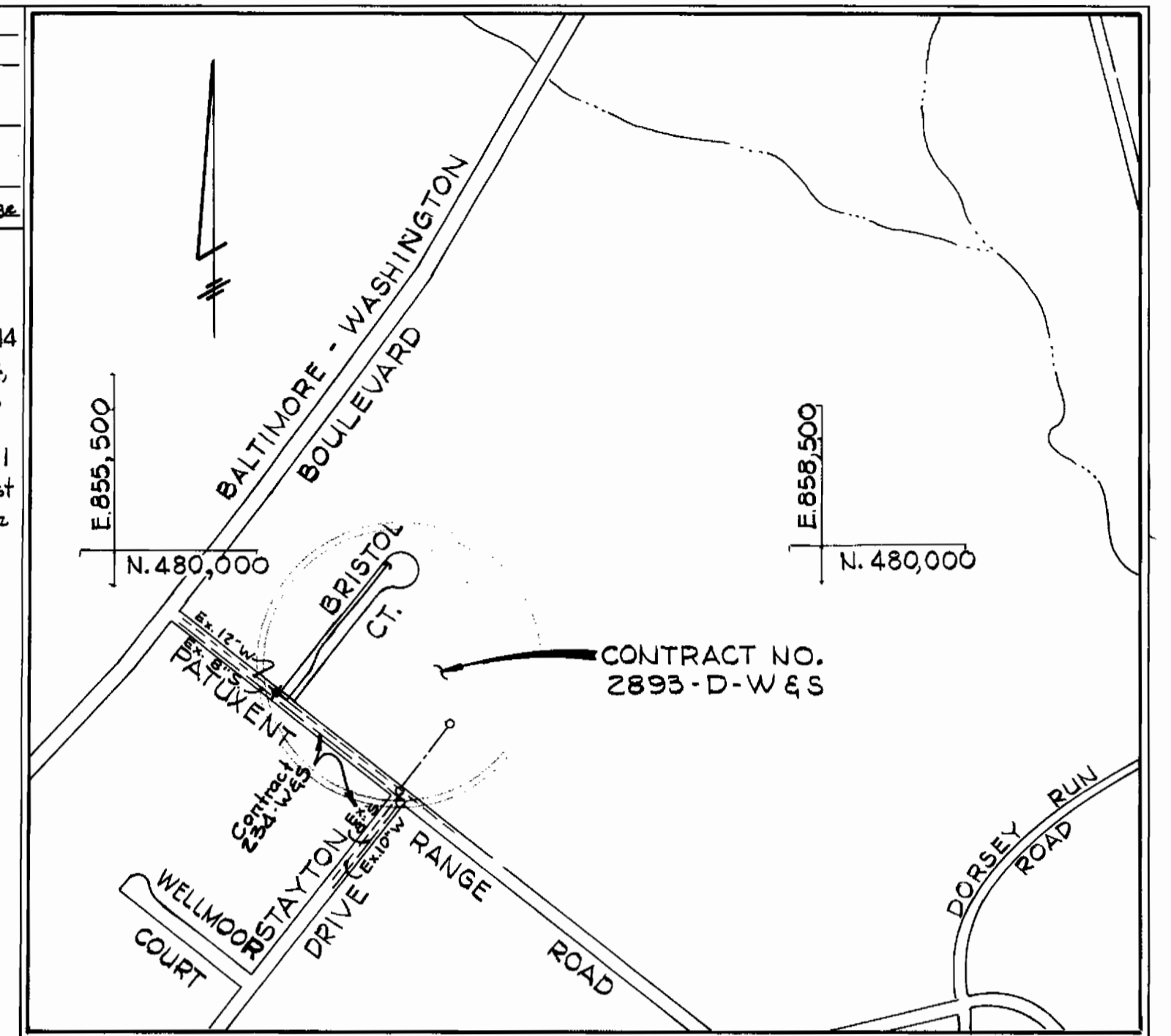


QUANTITIES			
ITEM	ESTIMATED	AS-BUILT	MATERIAL SUPPLIER
8" Sewer	428 L.F.		
Manholes	2		
6" Water	60 L.F.		
12" Water	740 L.F.		
12" Valves	1		
Fire Hydrants & Valves	1		
Tapping Sleeves & Valve	1		
1/4" x 5/8"	1		

TYPE OF BUILDINGS Industrial
 NUMBER OF LOTS 4
 NUMBER OF WATER HOUSE CONNECTIONS -
 NUMBER OF SEWER HOUSE CONNECTIONS 4
 DRAINAGE AREA Little Patuxent/Savage

BENCH MARKS
 W.R. & A. B.M. #8 ELEV. 278.14
 Railroad Spike In Power Pole #334744,
 180' South From Patuxent Range Drive
 On Washington Boulevard.
 W.R. & A. B.M. #8-4 ELEV. 263.11
 80 Penny Nail In 36" Oak 345' West
 From Stayton Drive. On Patuxent Range
 Drive.



VICINITY MAP
 SCALE: 1"=600'
 WATER & SEWER CODES (COUNTY USE)
 WATER NO. 802
 SEWER NO. 4202600

Sediment Control Measures For This Project Will Be Implemented In Accordance With Section 14- Of The Approved Specifications.

Reviewed For Howard Soil Conservation District And Meets Technical Requirements
James M. Hahn 4-8-80
 Signature Date
 U.S. Soil Conservation Service

This Construction Plan Is Approved For Soil Erosion & Sediment Control By The Howard Soil Conservation District
Approved 4-8-80
 Howard S.C.D.

BALTIMORE-WASHINGTON INDUSTRIAL PARK BRISTOL COURT HOWARD COUNTY, MD. DEPARTMENT OF PUBLIC WORKS

- GENERAL NOTES**
- 1) Approximate Location Of Existing Mains Are Shown. The Contractor Shall Take All Necessary Precautions To Protect Existing Mains & Services And Maintain Uninterrupted Supply. Any Damage Incurred Shall Be Repaired Immediately.
 - 2) All Horizontal Controls Are Based On Maryland State Coordinates.
 - 3) All Vertical Controls Are Based On U.S.G.S. Datum.
 - 4) All Sewer Mains Shall Be C.S.P.X., V.C.P.X., Or A.C.P. Class 2400 Unless Otherwise Noted.
 - 5) The Contractor Shall Provide A Joint In All Sewer Mains Within 2'-0" Of Exterior Manhole Wall.
 - 6) All Manholes Shall Be 4'-0" Inside Diameter, Unless Otherwise Noted.
 - 7) All Sewer Main Elevations Shown Are Invert Elevations. All Water Main Elevations Shown Are Top Of Pipe Elevations.
 - 8) Clear All Utilities By A Minimum Of 6". Clear All Poles 2'-0" Minimum Or Tunnel As Required.
 - 9) For All Standard Details, See Standards Bound In Specifications.
 - 10) Contractor Shall Locate Existing Utilities In Advance Of Construction Operations In The Vicinity Of Proposed Utilities.
 - 11) Contractor Shall Notify The Following Utilities Or Agencies At Least Five (5) Days Before Starting Work Shown On These Plans:
 State Highway Administration : 531-5533
 Balto. Gas & Elec. Co. - Underground Elec. Distribution Engineering : 355-0123
 Balto. Gas & Elec. Co. - Underground Gas Distribution Engineering : 355-0123
 Chesapeake & Potomac Telephone Co : 725-9976
 American Telephone & Telegraph - Cable Location Division : (301)-1-393-3553
 Colonial Pipeline Company : 781-4641
 - 12) Trees Are To Be Protected From Damage To Maximum Extent. Trees Located Within The Construction Area Not To Be Removed Or Damaged By Contractor.
 - 13) Contractor Shall Remove Trees, Stumps & Roots Along Line Of Excavation As Directed By The Engineer. Payment For Such Removal Shall Be Included In The Unit Price Bid For Excavation And Backfill For Water & Sewer Mains.
 - 14) Place Regulation "Men Working" And Warning Signs As Required To Comply With Maryland State Highway Administration Manual Of Traffic Control For Highway Construction & Maintenance Operations.
 - 15) All Water Mains To Be C.I.P. Or D.I.P. Unless Otherwise Noted.
 - 16) Top Of All Water Mains To Have A Minimum Of 3.5' Cover Unless Otherwise Noted.
 - 17) All Valves Shall Be Strapped To Trees In Accordance With Standard Details.
 - 18) Block All Fittings With Concrete, See Standards Bound In Specifications.
 - 19) Bury Line Elevations On Fire Hydrants Shall Be Set To The Elevations Shown On The Drawings. All Fire Hydrants Shall Be Strapped And Buttrassed With Concrete In Accordance With Standard Details. Soil Around The Fire Hydrant To Be Compacted In Accordance With Section 5-15 Of The Standard Specifications.
 - 20) The Contractor Shall Make The Proposed Water Connection To The Existing Water Main In Patuxent Range Drive During Off-Time And/or Week-Ends Only.

Robert Charney 5-11-80
 REGISTERED PROFESSIONAL ENGINEER
 E&C #8930

DEPARTMENT OF PUBLIC WORKS
 HOWARD COUNTY, MARYLAND
James J. Ellis 4-8-80
 CHIEF - BUREAU OF UTILITIES - DATE
William E. R. R. 4-8-80
 CHIEF - BUREAU OF ENGINEERING - DATE
GEORGE W. STEPHENS & ASSOCIATES, INC.
 CONSULTING ENGINEERS
 303 ALLEGHENY AVENUE
 TOWSON, MD. 21204

DEPARTMENT OF PUBLIC WORKS
 HOWARD COUNTY, MARYLAND
Mark F. Newman 4-8-80
 DIRECTOR OF PUBLIC WORKS DATE

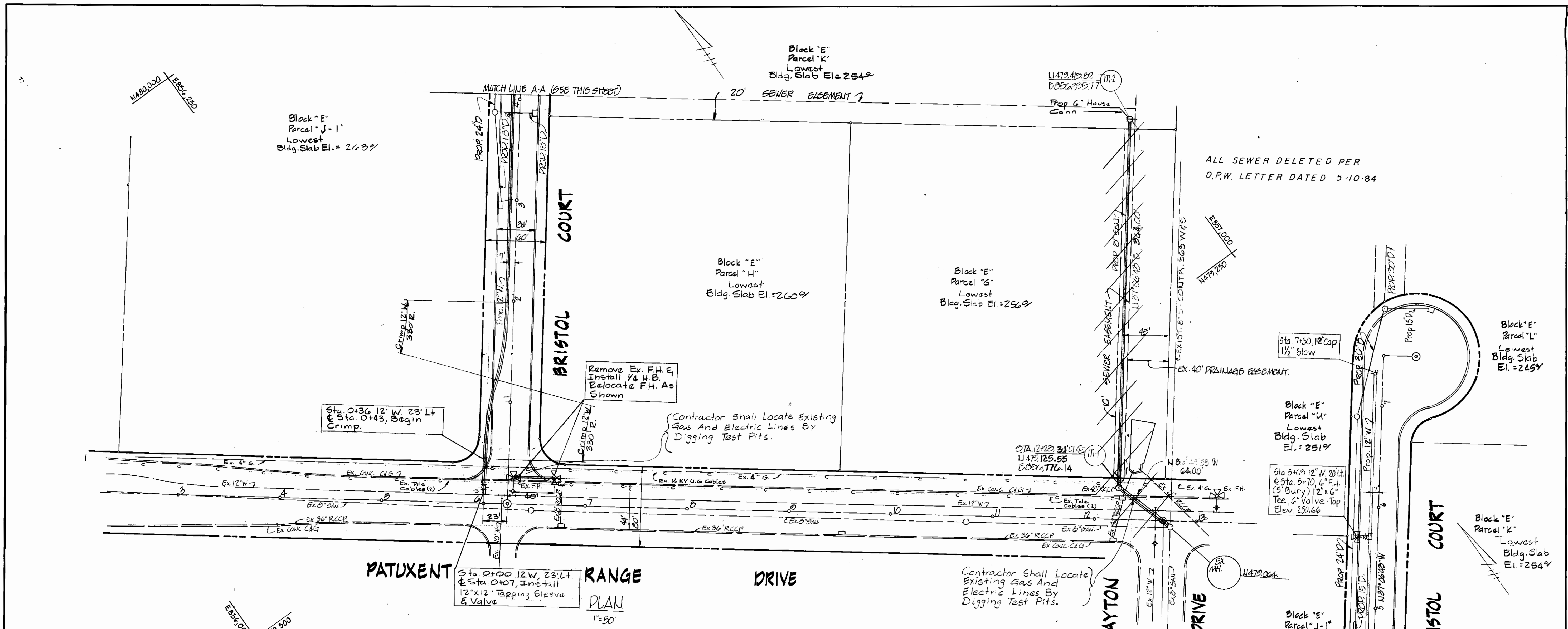
CONTRACT NO. 2893-D-W&S

LOCATION MAP
WATER & SEWER
MAINS

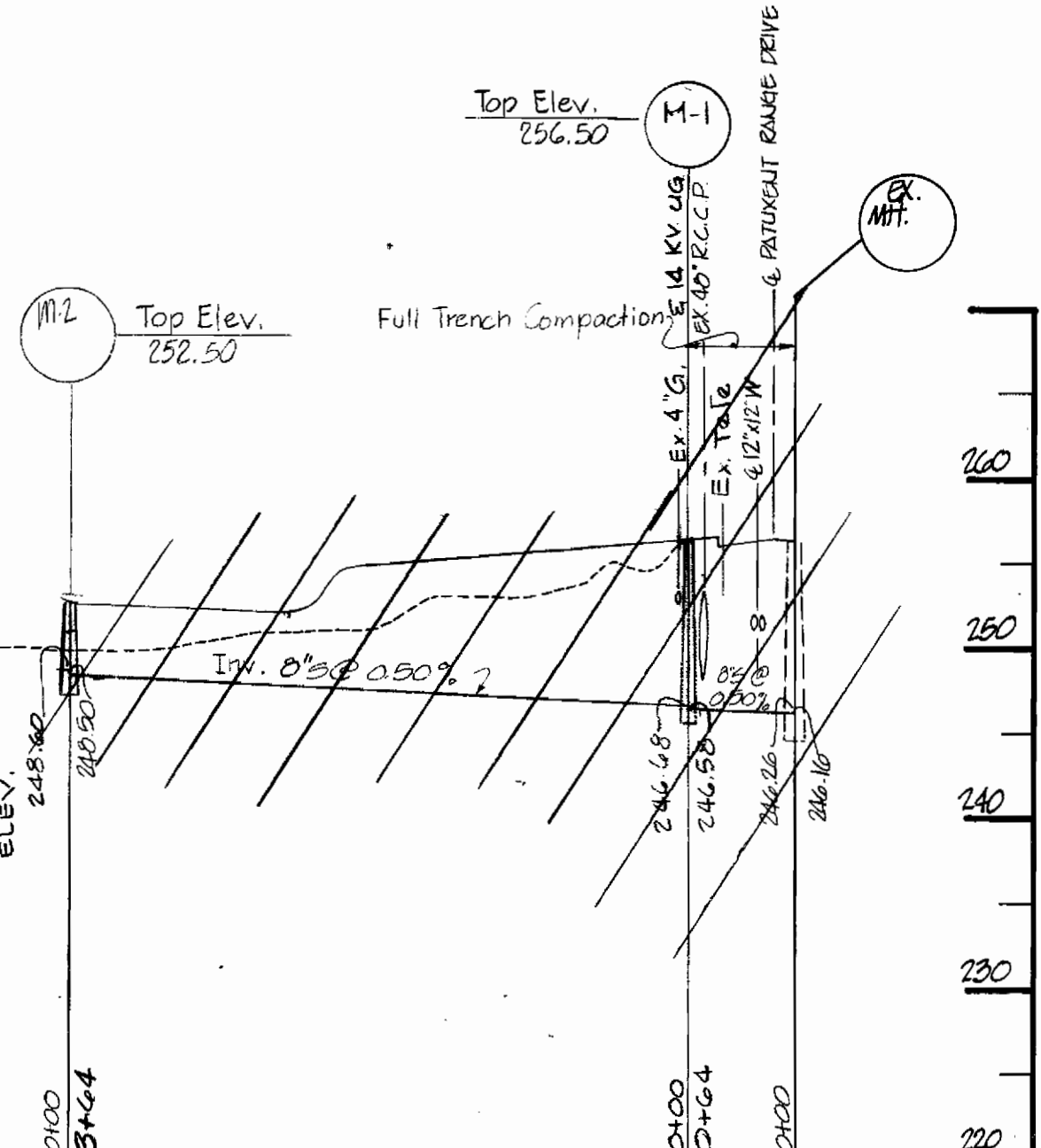
BALTIMORE-WASHINGTON
INDUSTRIAL PARK
BRISTOL COURT
 HOWARD CO., MD. ELECT. DIST. #6 FEB. 10, 1980

DRAWING
 NO. 1
 OF 2
SCALE
 AS SHOWN

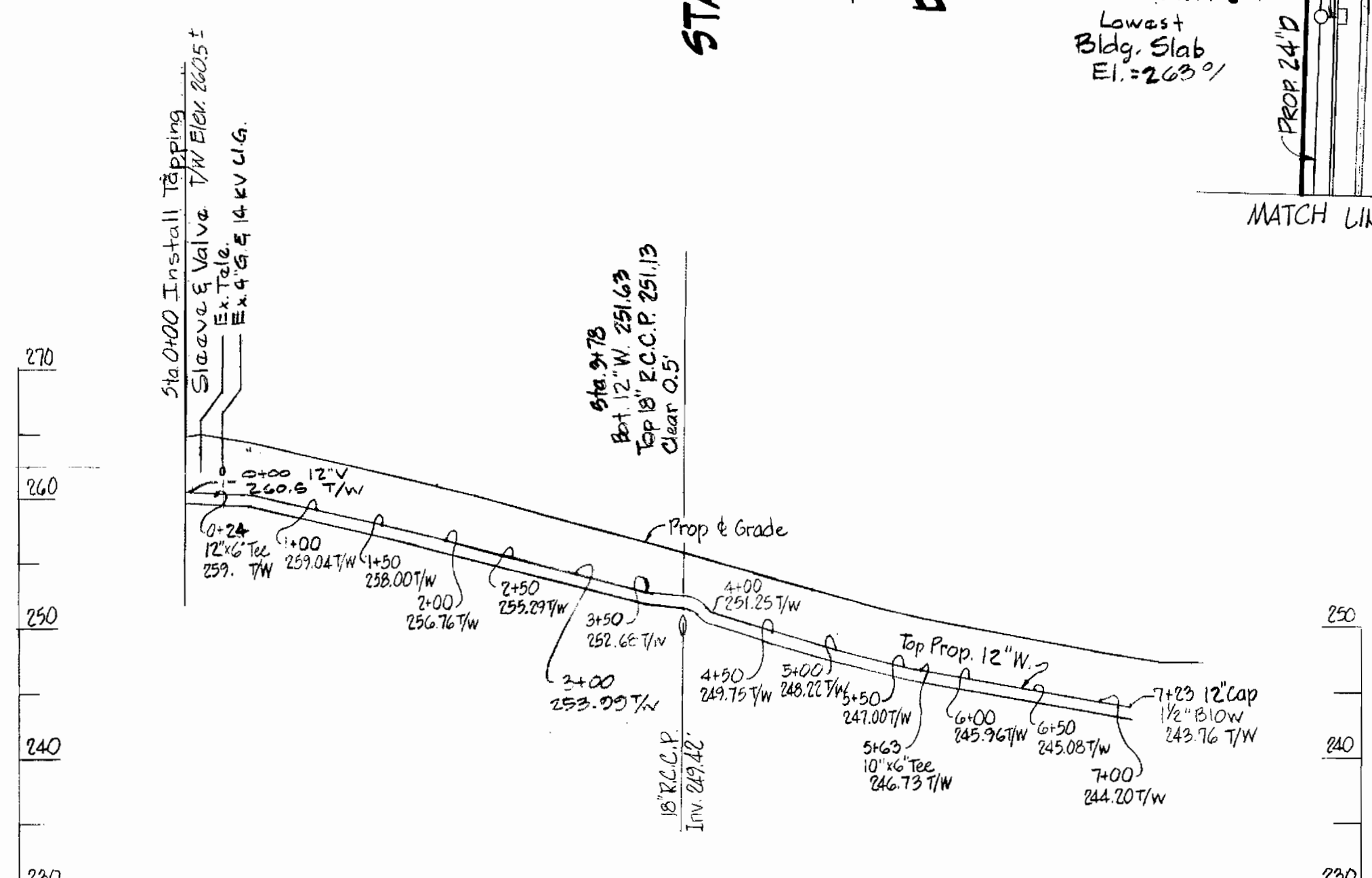
Revised 4/30/81



PATUXENT RANGE DRIVE
PLAN
 1"=50'



SANITARY SEWER PROFILE
 SCALE: HOR: 1"=100'
 VERT: 1"=10'



WATER PROFILE
 SCALE: HOR: 1"=100'
 VERT: 1"=10'

DEPARTMENT OF PUBLIC WORKS
 HOWARD COUNTY, MARYLAND
 James L. Ellis, Chief - Bureau of Utilities - DATE
 George W. Stephens & Associates, Inc., Consulting Engineers
 303 ALLEGHENY AVE.
 TOWSON, MD 21204

DEPARTMENT OF PUBLIC WORKS
 HOWARD COUNTY, MARYLAND
 Chief - Bureau of Engineering - DATE
 George W. Stephens & Associates, Inc., Consulting Engineers
 303 ALLEGHENY AVE.
 TOWSON, MD 21204

CONTRACT NO. 8993-D-WES

PLAN OF SEWER & WATER MAINS

BALTIMORE WASHINGTON INDUSTRIAL PARK BRISTOL COURT
 HOWARD CO. MD. ELECT. DIST. #6
 JUNE 30, 1977

DRAWING NO. 2 OF 2
SCALE AS SHOWN
 Japobrate Clark, Professional Engineer
 REG. NO. 8930
 STATE OF MARYLAND PROFESSIONAL ENGINEER

REVISED - 6/20/84 - SEWER DELETED - C.B.S.

Revised 4/30/81