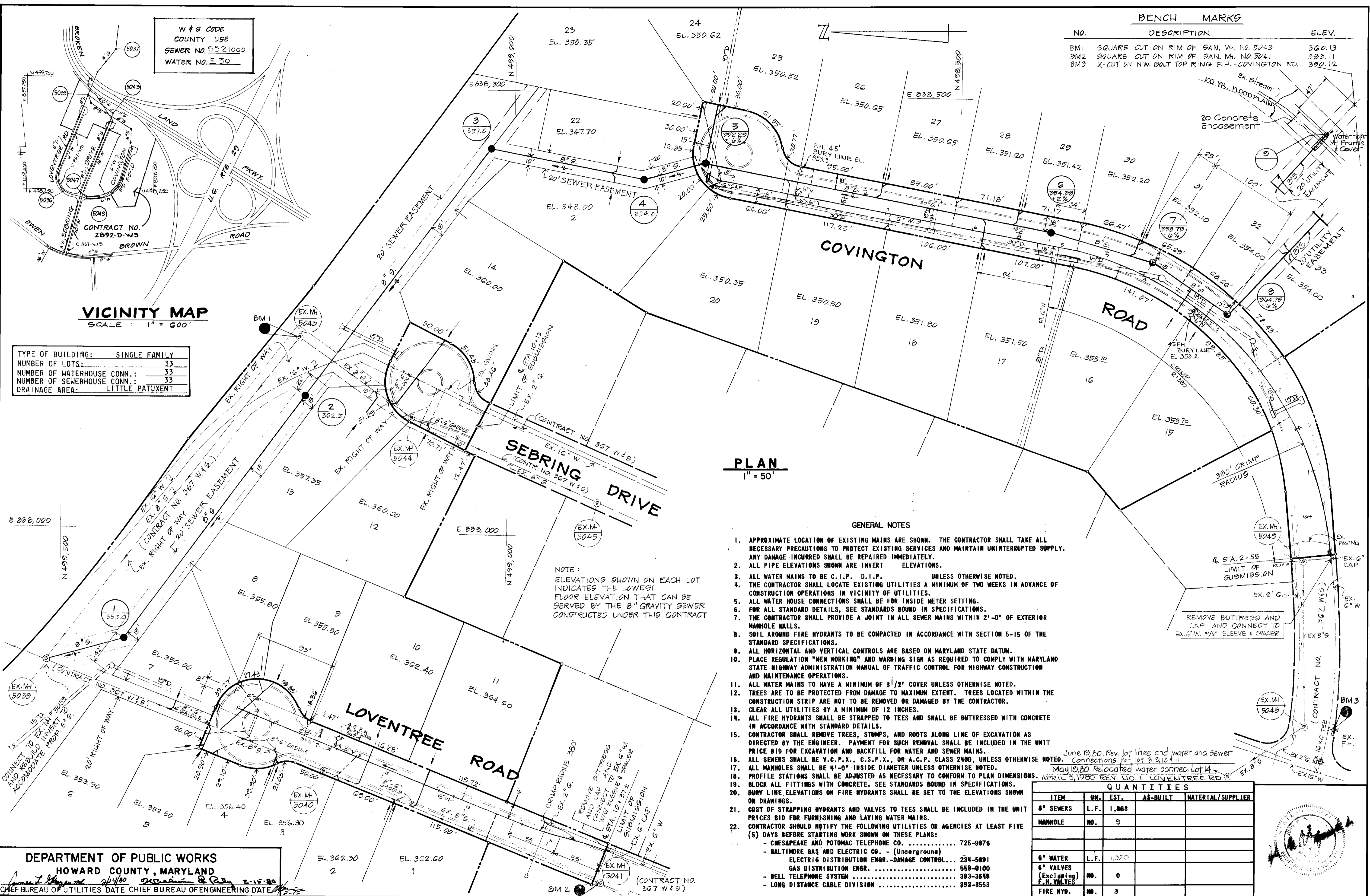


W & S CODE
COUNTY USE
SEWER NO. 5521000
WATER NO. E 30

BENCH MARKS		
NO.	DESCRIPTION	ELEV.
BM1	SQUARE CUT ON RIM OF SAN. MH. NO. 5043	360.13
BM2	SQUARE CUT ON RIM OF SAN. MH. NO. 5041	383.11
BM3	X-CUT ON N.W. BOLT TOP RING F.H. - COVINGTON RD.	320.12



VICINITY MAP
SCALE: 1" = 600'

TYPE OF BUILDING:	SINGLE FAMILY
NUMBER OF LOTS:	33
NUMBER OF WATERHOUSE CONN.:	33
NUMBER OF SEWERHOUSE CONN.:	33
DRAINAGE AREA:	LITTLE PATUXENT

PLAN
1" = 50'

GENERAL NOTES

- APPROXIMATE LOCATION OF EXISTING MAINS ARE SHOWN. THE CONTRACTOR SHALL TAKE ALL NECESSARY PRECAUTIONS TO PROTECT EXISTING SERVICES AND MAINTAIN UNINTERRUPTED SUPPLY. ANY DAMAGE INCURRED SHALL BE REPAIRED IMMEDIATELY.
- ALL PIPE ELEVATIONS SHOWN ARE INVERT ELEVATIONS.
- ALL WATER MAINS TO BE C.I.P. D.I.P. UNLESS OTHERWISE NOTED.
- THE CONTRACTOR SHALL LOCATE EXISTING UTILITIES A MINIMUM OF TWO WEEKS IN ADVANCE OF CONSTRUCTION OPERATIONS IN VICINITY OF UTILITIES.
- ALL WATER HOUSE CONNECTIONS SHALL BE FOR INSIDE METER SETTING.
- FOR ALL STANDARD DETAILS, SEE STANDARDS BOUND IN SPECIFICATIONS.
- THE CONTRACTOR SHALL PROVIDE A JOINT IN ALL SEWER MAINS WITHIN 2'-0" OF EXTERIOR MANHOLE WALLS.
- SOIL AROUND FIRE HYDRANTS TO BE COMPACTED IN ACCORDANCE WITH SECTION 5-15 OF THE STANDARD SPECIFICATIONS.
- ALL HORIZONTAL AND VERTICAL CONTROLS ARE BASED ON MARYLAND STATE DATUM.
- PLACE REGULATION "MEN WORKING" AND WARNING SIGN AS REQUIRED TO COMPLY WITH MARYLAND STATE HIGHWAY ADMINISTRATION MANUAL OF TRAFFIC CONTROL FOR HIGHWAY CONSTRUCTION AND MAINTENANCE OPERATIONS.
- ALL WATER MAINS TO HAVE A MINIMUM OF 3 1/2' COVER UNLESS OTHERWISE NOTED.
- TREES ARE TO BE PROTECTED FROM DAMAGE TO MAXIMUM EXTENT. TREES LOCATED WITHIN THE CONSTRUCTION STRIP ARE NOT TO BE REMOVED OR DAMAGED BY THE CONTRACTOR.
- CLEAR ALL UTILITIES BY A MINIMUM OF 12 INCHES.
- ALL FIRE HYDRANTS SHALL BE STRAPPED TO TEES AND SHALL BE BUTTRESSED WITH CONCRETE IN ACCORDANCE WITH STANDARD DETAILS.
- CONTRACTOR SHALL REMOVE TREES, STUMPS, AND ROOTS ALONG LINE OF EXCAVATION AS DIRECTED BY THE ENGINEER. PAYMENT FOR SUCH REMOVAL SHALL BE INCLUDED IN THE UNIT PRICE BID FOR EXCAVATION AND BACKFILL FOR WATER AND SEWER MAINS.
- ALL SEWERS SHALL BE V.C.P.X., C.S.P.X., OR A.C.P. CLASS 2400, UNLESS OTHERWISE NOTED.
- ALL MANHOLES SHALL BE 4'-0" INSIDE DIAMETER UNLESS OTHERWISE NOTED.
- PROFILE STATIONS SHALL BE ADJUSTED AS NECESSARY TO CONFORM TO PLAN DIMENSIONS.
- BLOCK ALL FITTINGS WITH CONCRETE. SEE STANDARDS BOUND IN SPECIFICATIONS.
- BURY LINE ELEVATIONS ON FIRE HYDRANTS SHALL BE SET TO THE ELEVATIONS SHOWN ON DRAWINGS.
- COST OF STRAPPING HYDRANTS AND VALVES TO TEES SHALL BE INCLUDED IN THE UNIT PRICES BID FOR FURNISHING AND LAYING WATER MAINS.
- CONTRACTOR SHOULD NOTIFY THE FOLLOWING UTILITIES OR AGENCIES AT LEAST FIVE (5) DAYS BEFORE STARTING WORK SHOWN ON THESE PLANS:
 - CHESAPEAKE AND POTOMAC TELEPHONE CO. 725-9976
 - BALTIMORE GAS AND ELECTRIC CO. (Underground) 234-5691
 - ELECTRIC DISTRIBUTION ENGR. - DAMAGE CONTROL... 559-0100
 - GAS DISTRIBUTION ENGR. 393-3649
 - BELL TELEPHONE SYSTEM 393-3649
 - LONG DISTANCE CABLE DIVISION 393-3553

NOTE:
ELEVATIONS SHOWN ON EACH LOT INDICATES THE LOWEST FLOOR ELEVATION THAT CAN BE SERVED BY THE 8" GRAVITY SEWER CONSTRUCTED UNDER THIS CONTRACT

QUANTITIES			
ITEM	UN.	EST.	AS-BUILT MATERIAL/SUPPLIER
8" SEWERS	L.F.	1,063	
MANHOLE	NO.	9	
6" WATER	L.F.	1,320	
6" VALVES (Excl. w/ing)	NO.	0	
F.H. VALVES	NO.	3	

DEPARTMENT OF PUBLIC WORKS
HOWARD COUNTY, MARYLAND
CHIEF BUREAU OF UTILITIES DATE 2-15-80

DEPARTMENT OF PUBLIC WORKS
HOWARD COUNTY, MARYLAND
CONTRACT NO. 8892-D-W5
DATE 2-15-80

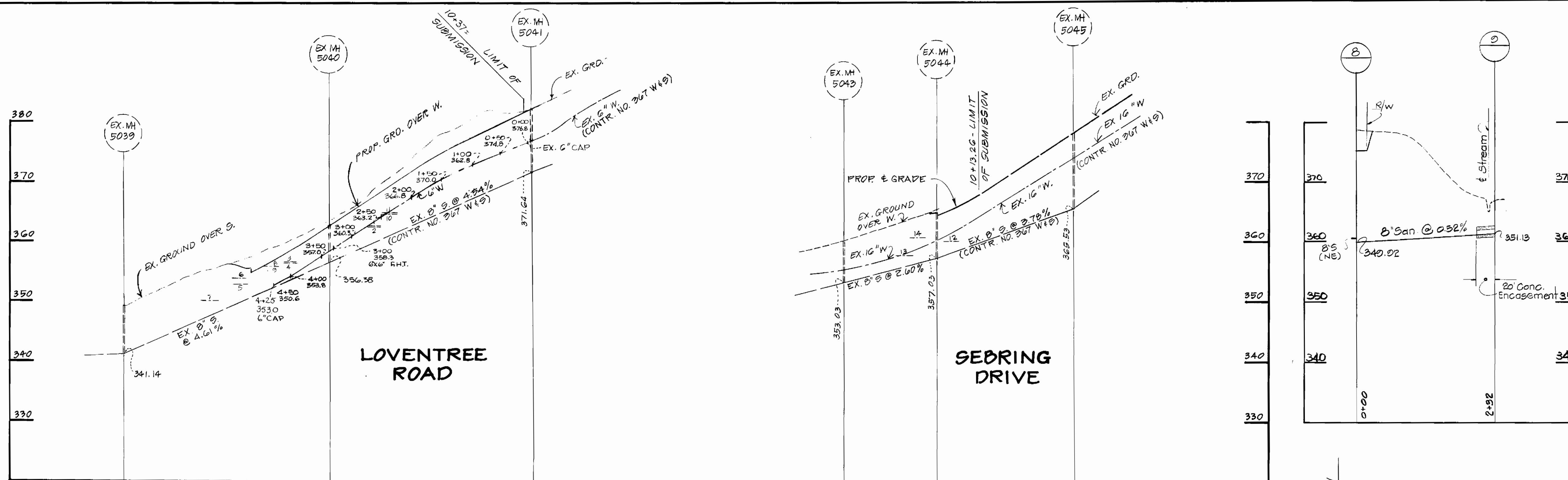
CONTRACT NO. 8892-D-W5

PLAN OF
WATER AND SEWER MAINS

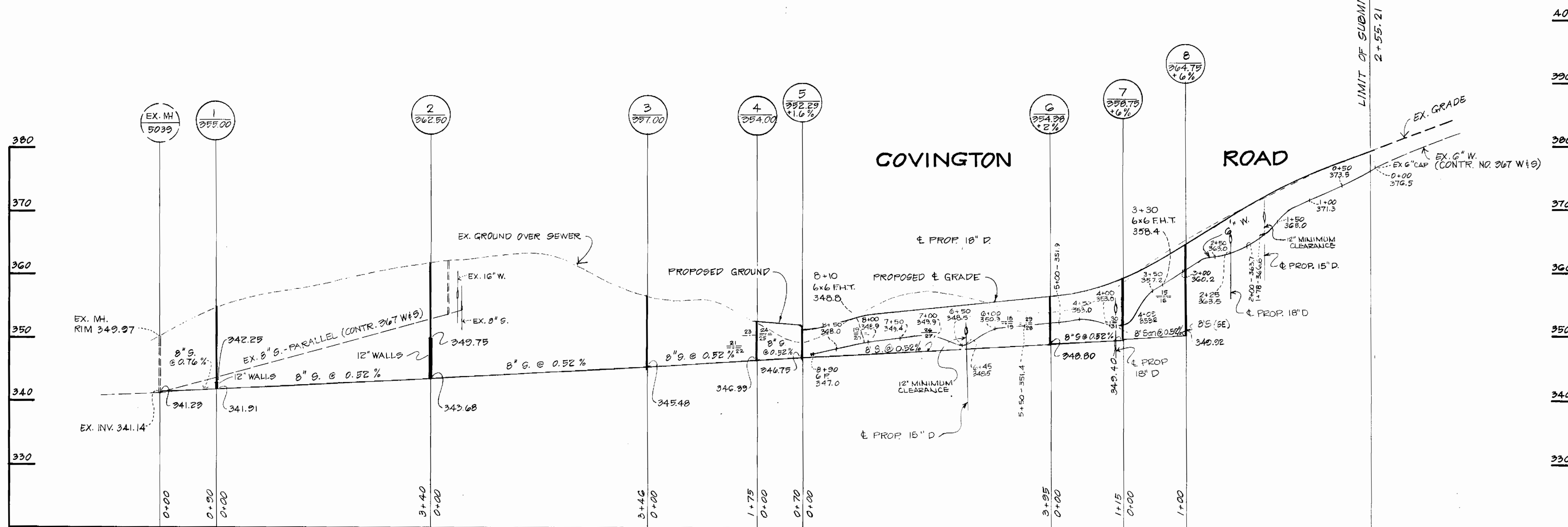
VILLAGE OF HICKORY RIDGE
WATER AND SEWER EXTENSIONS
5TH ELECTION DISTRICT

DRAWING NO. 1 OF 2
SCALE AS SHOWN





WATER AND SEWER PROFILES



WATER AND SEWER PROFILES

DEPARTMENT OF PUBLIC WORKS
HOWARD COUNTY, MARYLAND

APRIL 3, 1980 REVISION NO. 1 LOVENTREE ROAD
VILLAGE OF HICKORY RIDGE SEC. 2 AREA I
SEBRING
C. 2892-D-WS

CENTURY ENGINEERING, INC.
CONSULTING ENGINEERS - PLANNERS
TOWSON, MARYLAND 21204

DEPARTMENT OF PUBLIC WORKS
HOWARD COUNTY, MARYLAND

CONTRACT NO. 2892-D-WS

PROFILES OF
WATER AND SEWER MAINS

VILLAGE OF HICKORY RIDGE
WATER AND SEWER EXTENSIONS
5TH ELECTION DISTRICT

DRAWING
NO. 2
OF 2

SCALE
HOR. 1"=100'
VERT. 1"=10'

