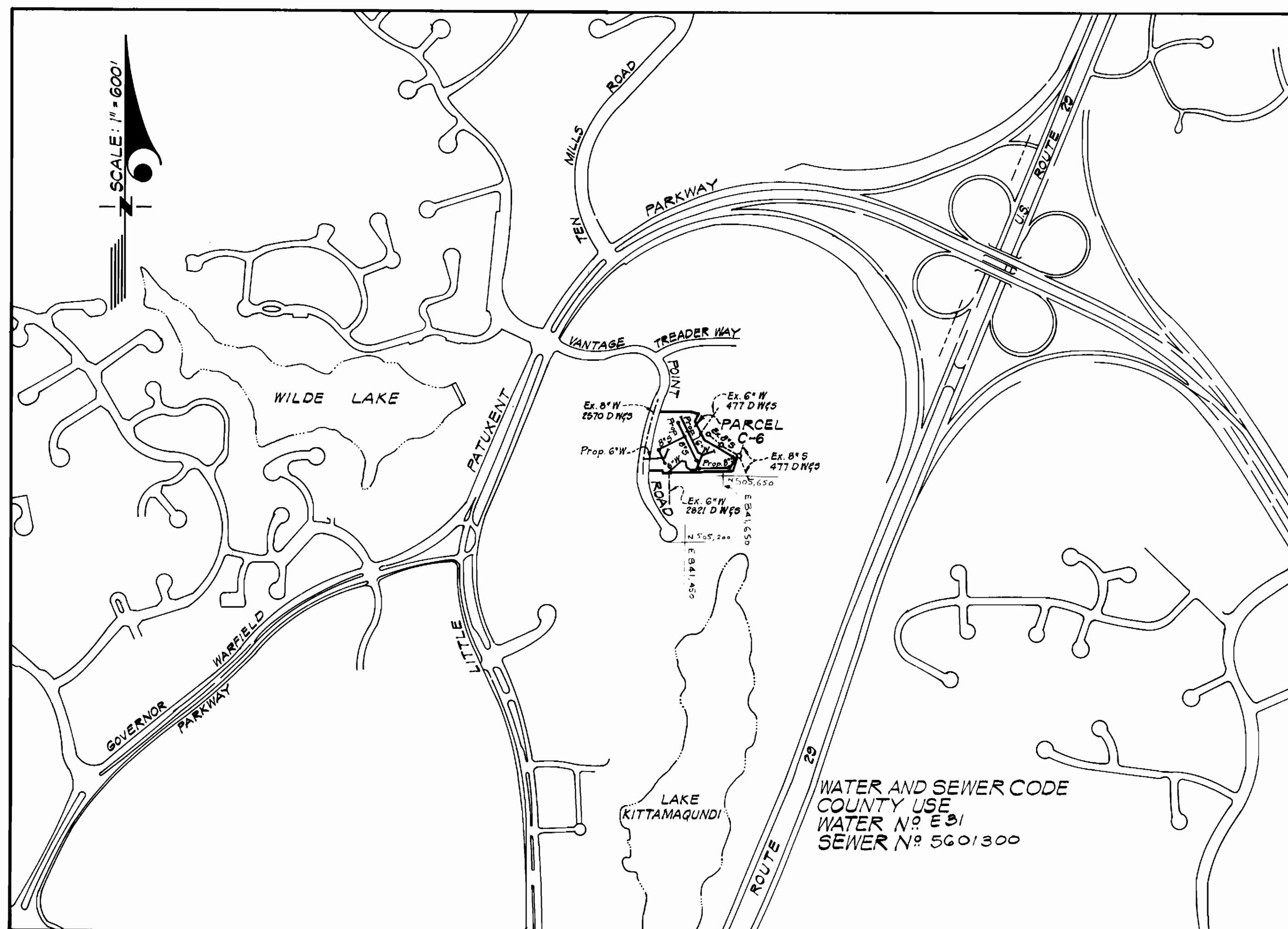


Type of Buildings	Single Family Attached
Number of Lots	35
Number of Water House Connections	35
Number of Sewer House Connections	35
Drainage Area	Little Patuxent



GENERAL NOTES

- All water mains to be C.I.P., D.I.P. unless otherwise shown.
- Top of all water mains to have a minimum of 3.5 ft. cover unless otherwise noted.
- All valves shall be strapped to face in accordance with standard details.
- Block all fittings with concrete, see standards bound in specifications.
- Bury line elevations on fire hydrants shall be set to the elevations shown on the drawings. All fire hydrants shall be strapped and buttressed with concrete in accordance with standard details. Soil around the fire hydrants to be compacted in accordance with Section 5-15 of the Standard Specifications.
- All sewer mains shall be C.S.P.X., V.C.F.X., or A.C.P. Class 2400 unless otherwise noted.
- The contractor shall provide a joint in all sewer mains within 2'-0" of exterior manhole wall.
- All manholes shall be 4'-0" inside diameter, unless otherwise noted.
- Approximate locations of existing mains are shown. The contractor shall take all necessary precautions to protect existing mains and services and maintain uninterrupted supply. Any damage incurred shall be reported immediately.
- All horizontal controls are based on Maryland State Coordinates.
- All vertical controls are based on U.S.G.S. Datum.
- All pipe elevations shown are invert elevations.
- Clear all utilities by a minimum of 6", clear all poles by 2'-0" minimum or tunnel as required.
- For all standard details see standards bound in specifications.
- Contractor shall locate existing utilities in advance of construction operations in the vicinity of proposed utilities.
- Contractor shall notify the following utilities or agencies at least five (5) days before starting work shown on these plans.
 State Highway Administration - 531-5533
 Baltimore Gas and Electric Company - Underground Electric Distribution Engineering, "Damage Control" - 234-5681.
 Baltimore Gas and Electric Company - Underground Gas Distribution Engineering - 559-0100
 Chesapeake and Potomac Telephone Co. - 725-9376
 American Telephone and Telegraph - Cable Location Division - 301-392-3553.
 Colonial Pipeline Company - 781-4641.
- Trees are to be protected from damage to maximum extent. Trees located within the construction strip are not to be removed or damaged by the contractor.
- Contractor shall remove trees, stumps and rocks along line of excavation as directed by the Engineer. Payment for such removal shall be included in the unit price bid for excavation and backfill for water and sewer mains.
- Place regulation "Men Working" and warning signs as required to comply with Maryland State Highway Administration Manual of Traffic Control for Highway Construction and Maintenance Operations.

WATER AND SEWER CODE
 COUNTY USE
 WATER N^o E 31
 SEWER N^o 5601300



H. Nelson Clark
 10-15-79

CONTRACT NO. ~~879~~ - D W&S
 TOWN CENTER
 HOWARD COUNTY, MARYLAND
 DEPARTMENT OF PUBLIC WORKS

ITEM	QUANTITIES		
	ESTIM'D	AS-BUILT	MATERIAL/SUPPLIER
8" Sewer	892 LF		
Manhole	46 V.F.		
6" Water	972 LF		
6" Valve (Excluding) E.H. Valves	4		
Fire Hydrants	2		

TOWN CENTER - SECT. 7, AREA 7
 C 2879-D-W&S

DEPARTMENT OF PUBLIC WORKS
 HOWARD COUNTY, MARYLAND
James F. Finefrock 10/14/79
 CHIEF-BUREAU OF UTILITIES DATE
Allen S. Brown 11/17/79
 CHIEF-BUREAU OF ENGINEERING DATE

CLARK • FINEFROCK & SACKETT
 ENGINEERS • PLANNERS • SURVEYORS
 11315 LOCKWOOD DRIVE • SILVER SPRING, MARYLAND • (301) 593-3400

DEPARTMENT OF PUBLIC WORKS
 HOWARD COUNTY, MARYLAND
Neil F. Neumann 11-1-79
 DIRECTOR OF PUBLIC WORKS DATE

CONTRACT NO. ~~879~~ - D W&S

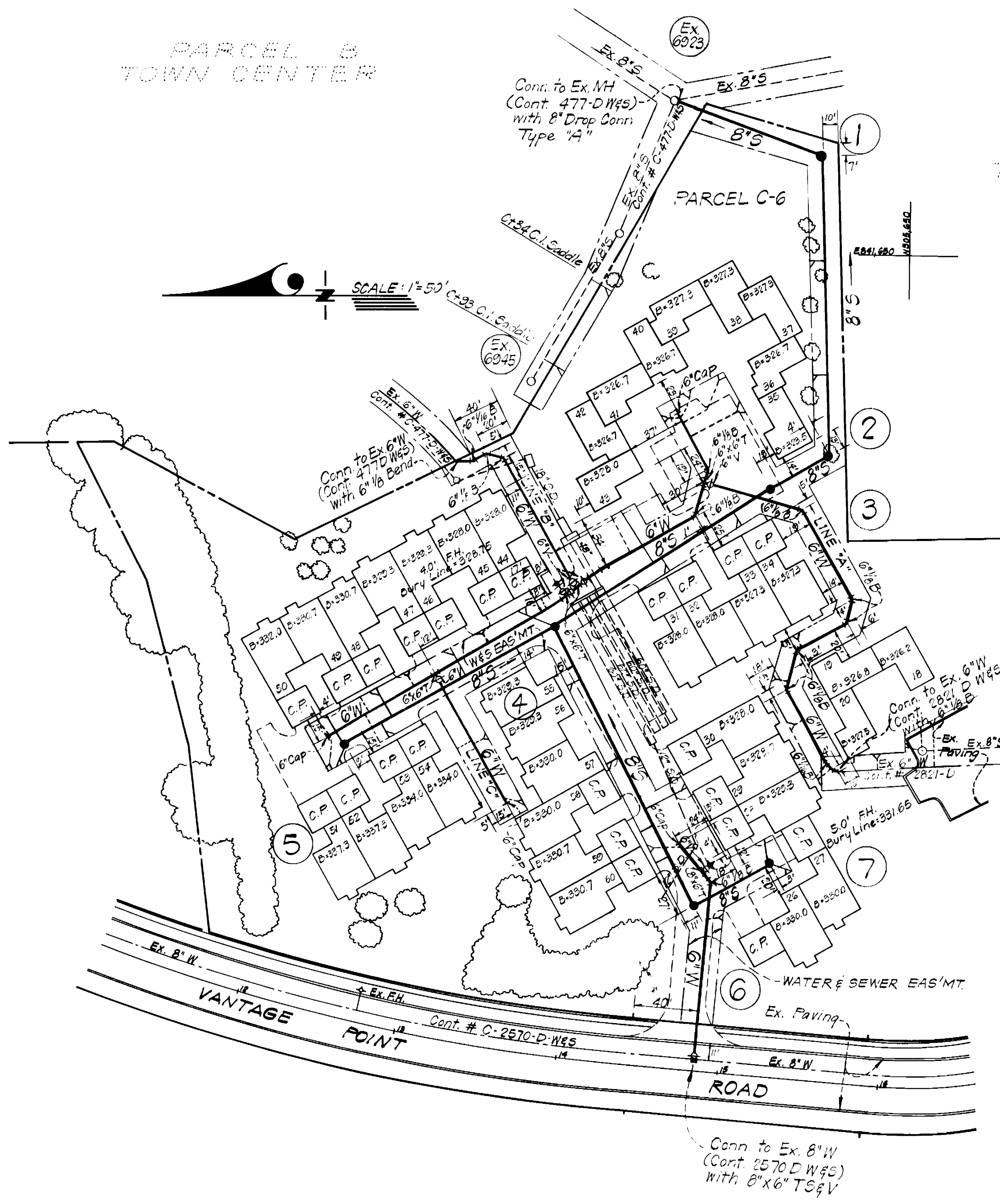
PLAN OF
 WATER & SEWER MAINS

COLUMBIA
 TOWN CENTER
 ELECTION DISTRICT CLARKSVILLE NO. 5

DRAWING NO. 1 OF 2
 SCALE

PARCEL B
TOWN CENTER

LOT C-3
TOWN CENTER

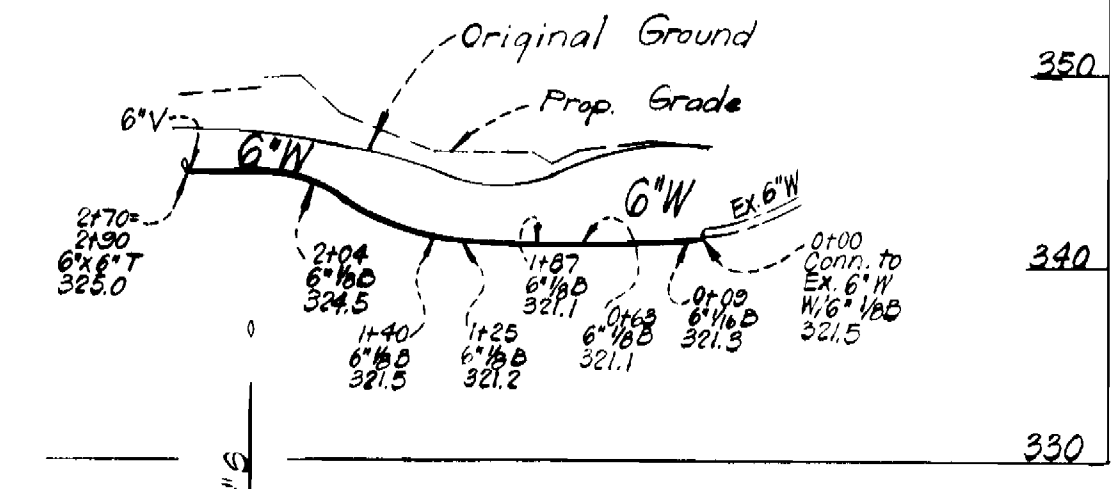


SCALE: 1" = 50'

LINE "A"

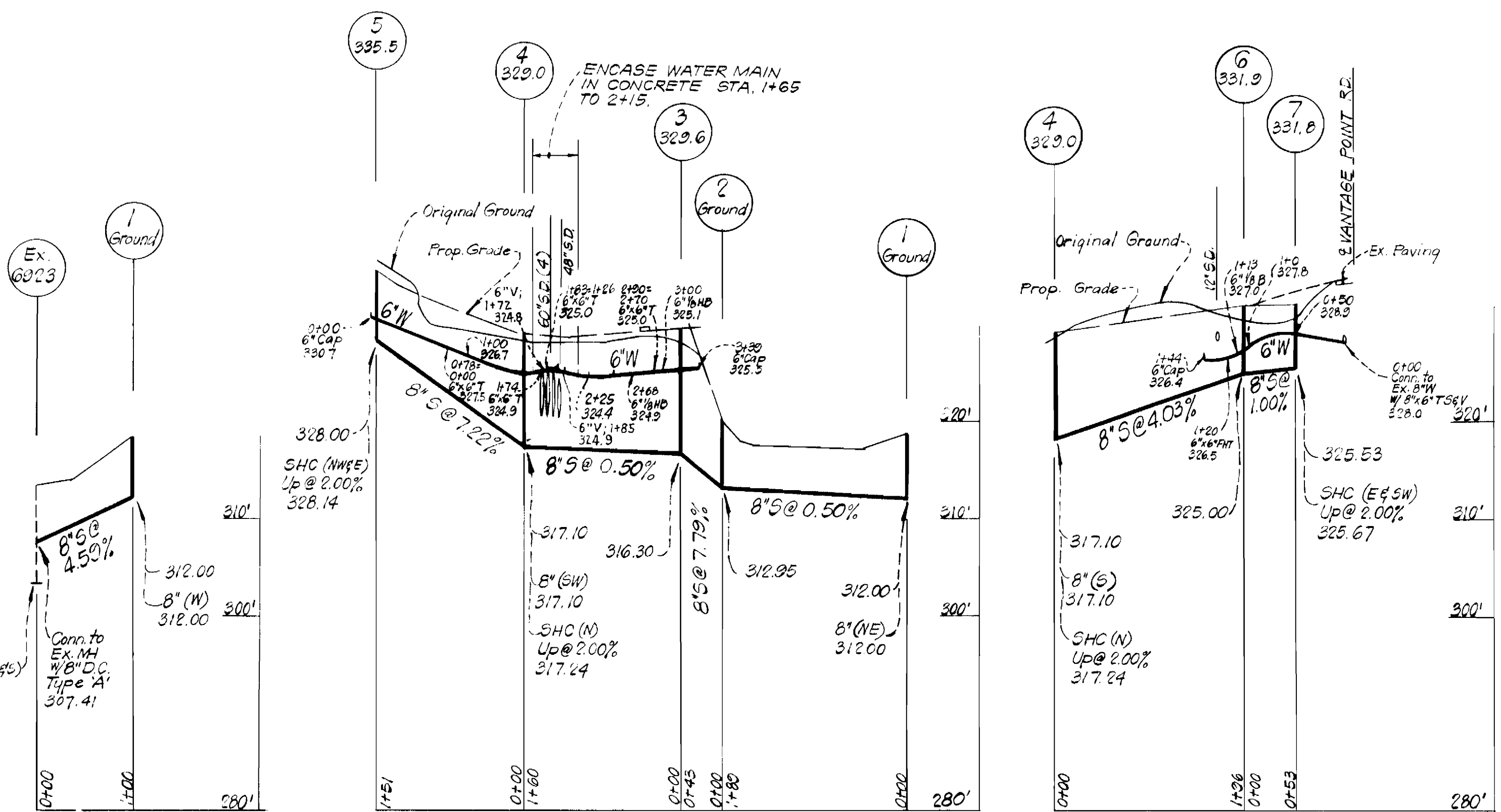
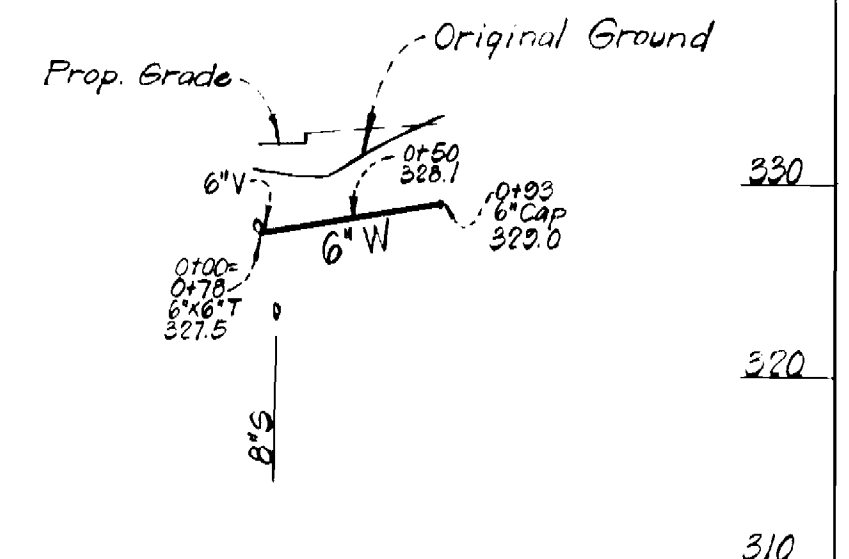
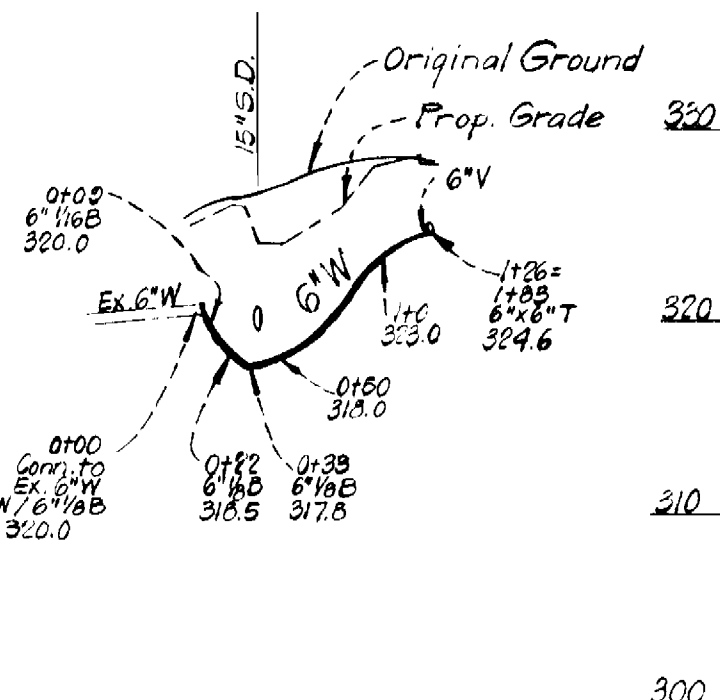
PROFILE SCALE

HOR. 1" = 100'
VER. 1" = 10'



LINE "B"

LINE "C"



J. N. Cook
10-15-79

DEPARTMENT OF PUBLIC WORKS
HOWARD COUNTY, MARYLAND
Amos J. ...
CHIEF BUREAU OF UTILITIES DATE 8/29
Allen J. ...
CHIEF BUREAU OF ENGINEERING DATE 11/19

CLARK • FINEFROCK & SACKETT
ENGINEERS • PLANNERS • SURVEYORS
11315 LOCKWOOD DRIVE • SILVER SPRING, MARYLAND • (301) 593-3400

DEPARTMENT OF PUBLIC WORKS
HOWARD COUNTY, MARYLAND
Walter F. ...
DIRECTOR OF PUBLIC WORKS DATE 11-1-79

CONTRACT NO. 2879 D WES

PLANS AND PROFILES FOR
WATER AND SEWER MAINS

COLUMBIA
TOWN CENTER
ELECTION DISTRICT - CLARKSVILLE NO. 5

DRAWING NO. 2 OF 2
SCALE AS SHOWN

TOWN CENTER - SECT 7, AREA 7
C 2879-D-W-5