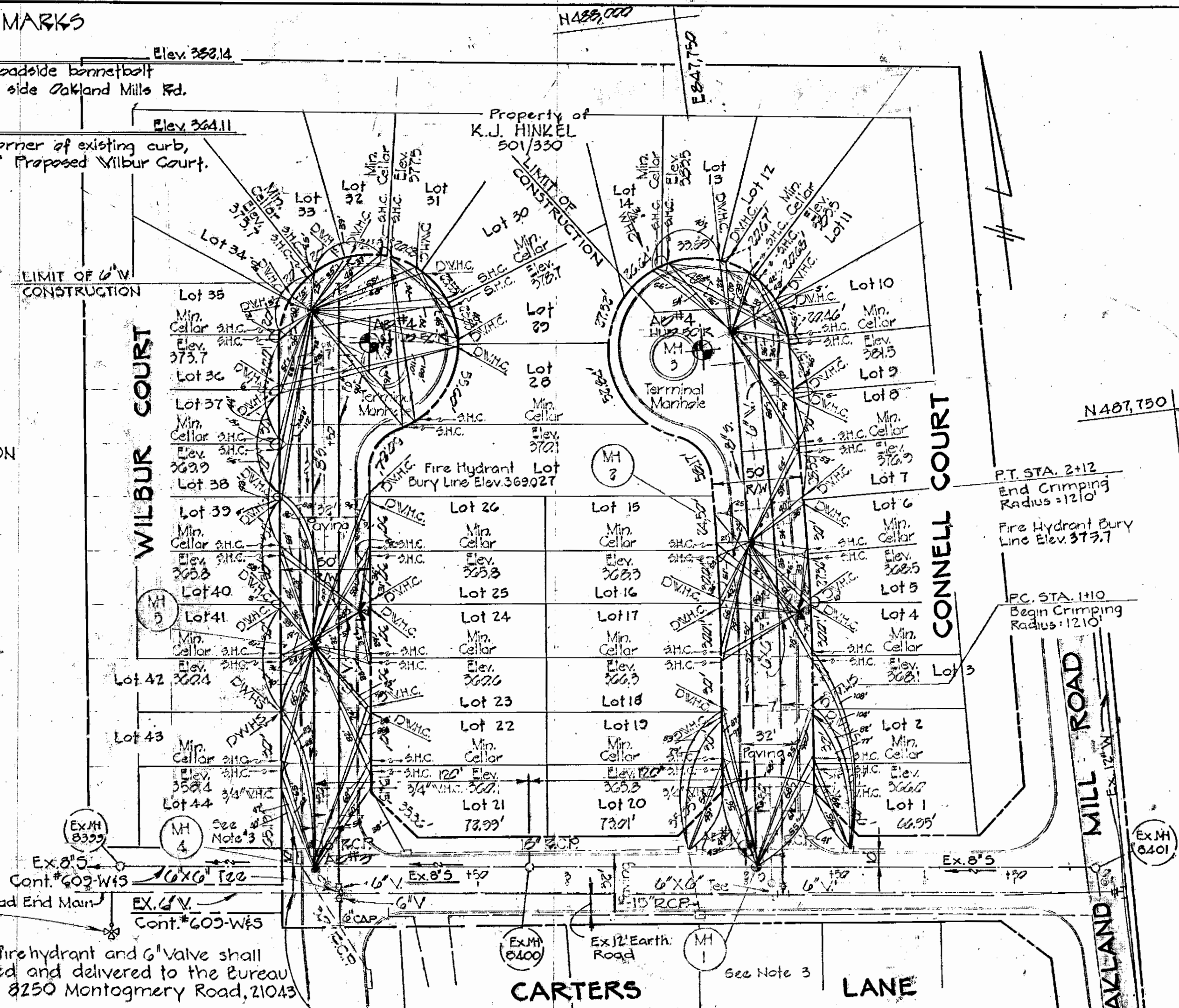


BENCH MARKS

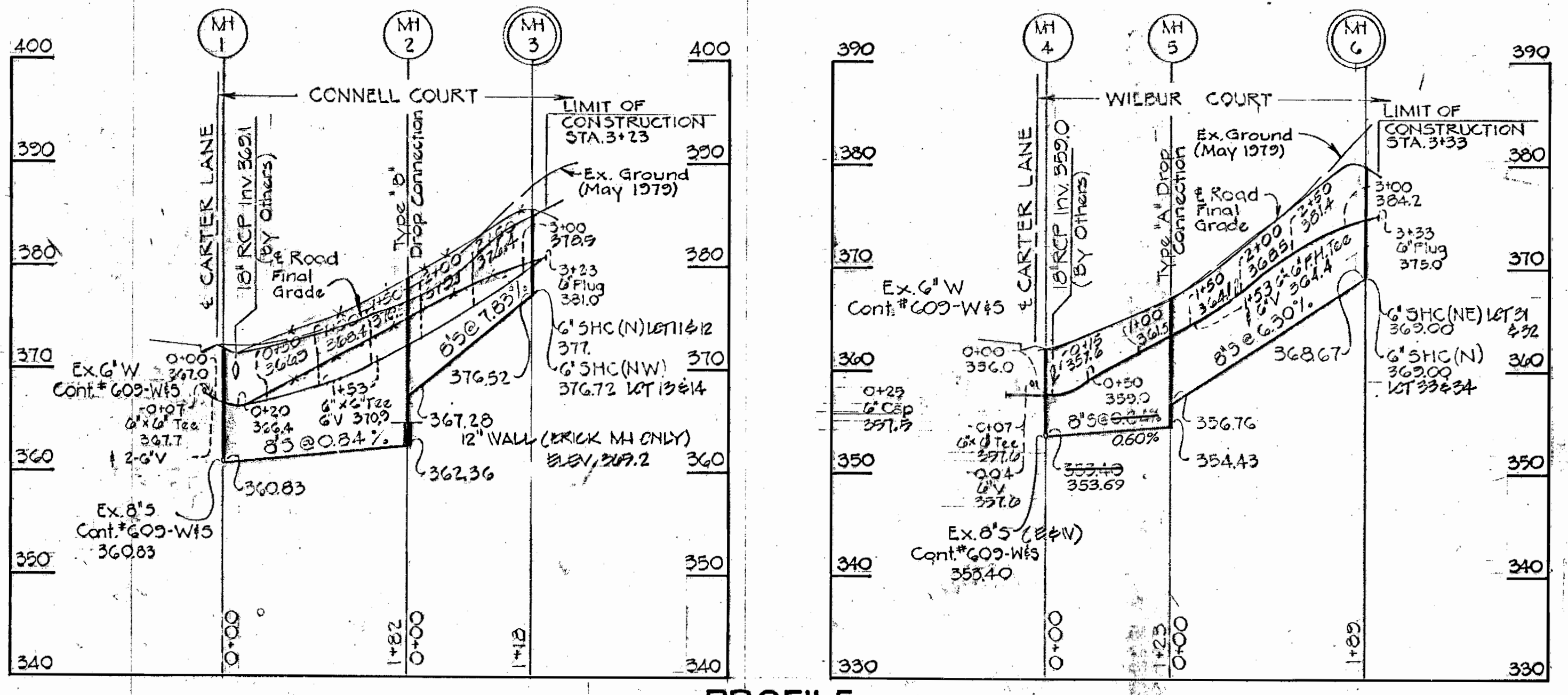
- DM #2 Elev 352.14
X-Cut on roadside benchmark on R.H., East side Oakland Mills Rd.
- DM #3 Elev 344.11
□-Cut on corner of existing curb, West side of Proposed Wilbur Court.

Property of E.G.U. SUBDIVISION 21/89



Note: The fire hydrant and G Valve shall be removed and delivered to the Bureau of Utilities, 8250 Montgomery Road, 21043

PLAN
Scale: 1"=50'

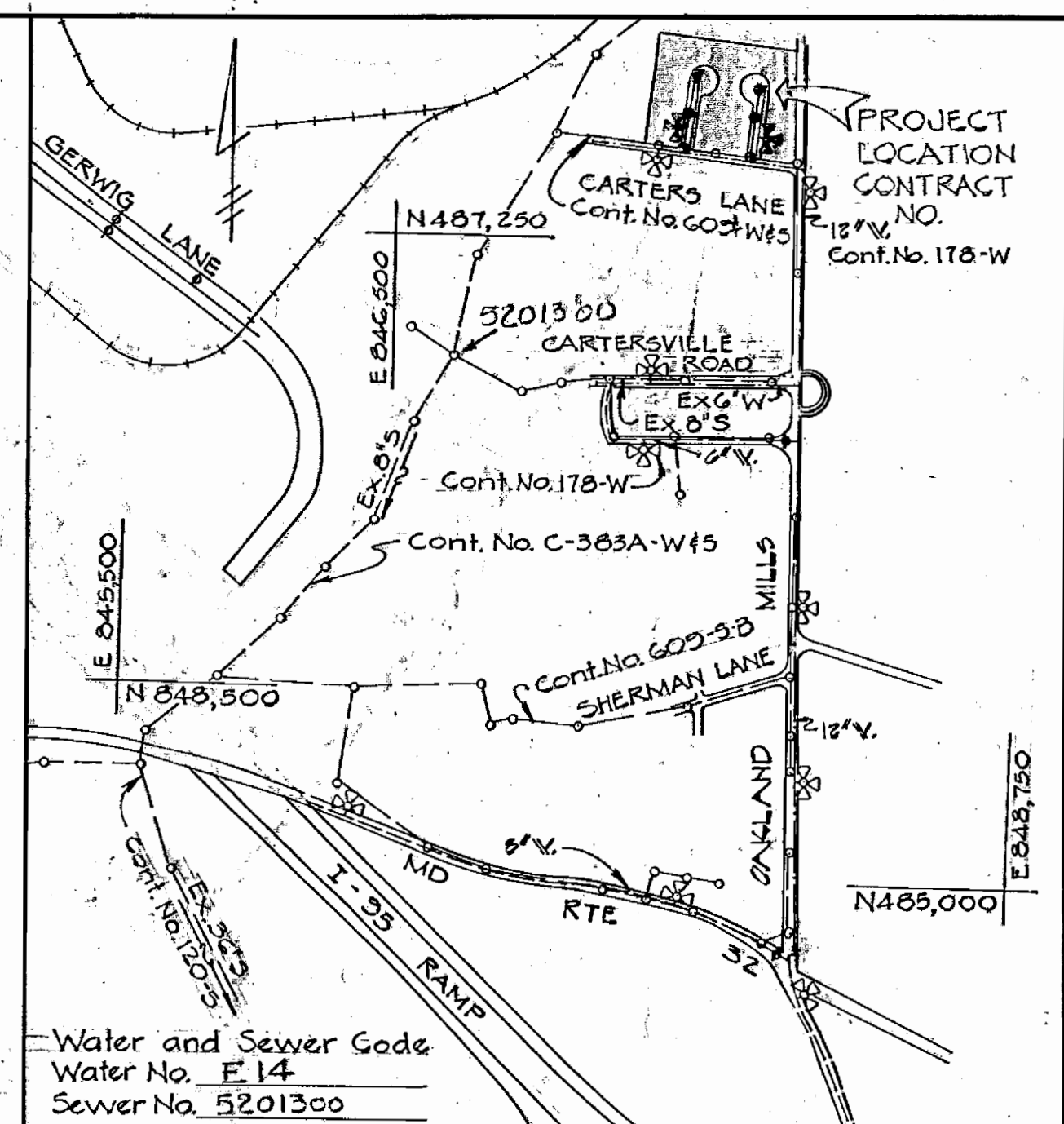


PROFILE
Scale: Horiz. 1"=100'
Vert. 1"=10'

Type of Buildings	Semi-Detached
Number of Lots	44
Number of Water House Connections	44
Number of Sewer House Connections	44
Drain Area: 40A ⁶ LITTLE PATENT	Total Lot Area: 3.299 Ac.±

- Note:
- Water main station correspond to Road Stations.
 - All site grading, paving, curbing, and storm drainage systems, are not included in this contract.
 - Mt's 1 and 4 shall be constructed over existing 8'S.
 - Manhole frames and covers shall be set to final grade.

QUANTITIES			
ITEM	PROPOSED	AS BUILT	SUPPLIER
8'S	612	596	JOHNS MANVILLE
Terminal MH	2	2	JOHNS MANVILLE
Type 'A' Drop MH	1	1	JOHNS MANVILLE
Type 'B' Drop MH	1	1	JOHNS MANVILLE
Standard MH	2	2	QMC PROD. OF AMERICA
G'W	694	687	GRIFFIN-20
F.H.	2	2	DRESSER
G'V	5	5	DRESSER



VICINITY MAP
Scale: 1"=600'

GENERAL NOTES

- The approximate locations of existing utilities are shown. The Contractor shall take all necessary precautions to protect existing utilities and to maintain uninterrupted service. Any damage incurred due to the Contractor's operation shall be repaired immediately at the Contractor's expense.
- All horizontal controls are based on Maryland State Coordinates.
- All vertical controls are based on U.S.C.S. Datum.
- All pipe elevations shown are invert elevations.
- All utilities shall be cleared by a minimum of 6". All utility poles shall be cleared by a minimum of 2'-0" or tunneled if required. Cost for tunneling or braising poles shall be included in the unit prices bid for excavation and backfill for water mains.
- For all standard details see standards bound in the specifications.
- The Contractor shall locate existing utilities in advance of construction operations in the vicinity of proposed utilities.
- The Contractor shall notify the following utilities or agencies at least five (5) days before starting work shown on these drawings:
 Baltimore Gas and Electric Company - Underground Electric Distribution Engineering - 234 - 5691
 Miss Utility - 559 - 0180
 Baltimore Gas and Electric Company - Underground Gas Distribution Engineering - 234 - 3533
 Chesapeake and Potomac Telephone Company - 725-5978
- Trees shall be protected from damage to the maximum extent. Trees located within construction strips shall not be removed or damaged by the Contractor.
- The Contractor shall remove trees, stumps and roots along the line of excavation as directed by the Engineer. Cost for such removal shall be included in the unit prices bid for excavation and backfill for water mains and sewer mains.
- The Contractor shall place regulation "Men Working" and warning signs as required to comply with Maryland State Highway Administration Manual of Traffic Control for Highway Construction and Maintenance Operations.
- All water mains shall be C.I.P., D.I.P., unless otherwise noted.
- The top of all water mains shall have a minimum of 3'-8" cover unless otherwise noted.
- All valves shall be strapped to the tees in accordance with the standard details.
- All water main fittings shall be buttressed or anchored with concrete in accordance with standard details.
- All fire hydrants shall be strapped to the tees and shall be buttressed with concrete in accordance with the standard details. The cost of strapping fire hydrants and valves shall be included in the unit price bid for furnishing and installing fire hydrants. The soil ground fire hydrants shall be compacted in accordance with section 5-15 of the standard specifications. Fire hydrant bury line elevations shall be set to the elevations shown on the drawings.
- All water house connections shall be for inside meter settings.
- All sewer mains shall be C.S.P.X., V.C.P.X., or A.C.P. Glass 2400 unless otherwise noted.
- The Contractor shall provide a joint in all sewer mains within 2'-0" of the exterior manhole walls.
- All manholes shall be 4'-0" inside diameter, unless otherwise noted.
- All Dual Water House Connection (DWHC) shall be 5.8 meter setting in accordance with Standard Detail W-59.



CONTRACT NO. 874-D-W8S
GUILFORD SQUARE
WATER & SEWER MAINS

REVISED 1-2-80 M.M.

DEPARTMENT OF PUBLIC WORKS
HOWARD COUNTY, MARYLAND
Steve F. Neumann, 11-8-79
DIRECTOR OF PUBLIC WORKS DATE
Allen S. Brown, 11/8/79
CHIEF-BUREAU OF ENGINEERING DATE
James L. Ellis, 11/8/79
CHIEF-BUREAU OF UTILITIES DATE

PURDUM & JESCHKE
ENGINEERS
1023 N. CALVERT ST.
BALTIMORE, MARYLAND

CONTRACT NO. 874-D-W8S

PLAN & PROFILE
WATER AND SEWER MAINS

GUILFORD SQUARE
6TH ELECTION DISTRICT
HOWARD CO., MARYLAND

DRAWING NO. 1 OF 1
SCALE AS SHOWN
Designed: P.W.R.
Drafted: P.W.R.
Checked: R.H.B.
10/7/79