

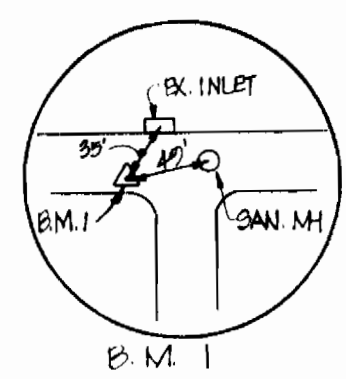
**GENERAL NOTES**

- APPROXIMATE LOCATION OF EXISTING MAINS ARE SHOWN. THE CONTRACTOR SHALL TAKE ALL NECESSARY PRECAUTIONS TO PROTECT EXISTING MAINS AND SERVICES AND MAINTAIN UNINTERRUPTED SUPPLY. ANY DAMAGE INCURRED SHALL BE REPAIRED IMMEDIATELY TO THE SATISFACTION OF THE ENGINEER, AT THE CONTRACTOR'S EXPENSE.
- ALL HORIZONTAL CONTROLS ARE BASED ON MARYLAND STATE COORDINATES.
- ALL VERTICAL CONTROLS ARE BASED ON U.S.G.S. DATUM.
- ALL PIPE ELEVATIONS SHOWN ARE INVERT ELEVATIONS.
- CLEAR ALL UTILITIES BY A MINIMUM OF 6'. CLEAR ALL POLES BY 2'-0" MINIMUM OR TUNNEL AS REQUIRED. ANY COST INCURRED TO THE CONTRACTOR FOR TUNNELING OR BRACING AT POLES SHALL BE INCLUDED IN UNIT PRICES BID FOR CONSTRUCTION OF THE MAIN.
- FOR DETAILS NOT SHOWN ON THE DRAWINGS USE HOWARD COUNTY STANDARD DETAILS.
- FOR MATERIALS AND CONSTRUCTION METHODS USE HOWARD COUNTY STANDARD SPECIFICATIONS.
- CONTRACTOR SHALL LOCATE EXISTING UTILITIES A MINIMUM OF TWO (2) WEEKS IN ADVANCE OF CONSTRUCTION OPERATIONS IN THE VICINITY OF PROPOSED UTILITIES AT HIS OWN EXPENSE.
- CONTRACTOR SHALL NOTIFY THE FOLLOWING UTILITIES OR AGENCIES AT LEAST FIVE (5) WORKING DAYS BEFORE STARTING WORK SHOWN ON THESE PLANS:
 

STATE HIGHWAY ADMINISTRATION	531-5533	AMERICAN TELEPHONE & TELEGRAPH - CABLE LOCATION DIV.	303-3553
ENGINEERING - "DAMAGE CONTROL"	234-5621	COLONIAL PIPELINE CO.	761-4641
"MISS UTILITY"	1-559-0100	BUREAU OF UTILITIES HOWARD COUNTY	292-2364
C & P TELEPHONE CO.	725-2976	BALTO. G & E CO. - UNDERGROUND GAS DIST. CUSTOMER SERVICE	685-0125
BALTO. G & E CO. - UNDERGROUND ELECTRIC DIST. CUSTOMER SERVICE	685-0125		
- TREES ARE TO BE PROTECTED FROM DAMAGE TO MAXIMUM EXTENT. TREES LOCATED WITHIN THE CONSTRUCTION STRIP ARE NOT TO BE REMOVED OR DAMAGED BY THE CONTRACTOR.
- CONTRACTOR SHALL REMOVE TREES, STUMPS, AND ROOTS ALONG LINE OF EXCAVATION AS DIRECTED BY THE ENGINEER. PAYMENT FOR SUCH REMOVAL SHALL BE INCLUDED IN THE UNIT PRICE BID FOR CONSTRUCTION OF THE MAIN.
- PLACE REGULATION "MEN WORKING" AND WARNING SIGNS AS REQUIRED TO COMPLY WITH M.S.H.A. MANUAL OF TRAFFIC CONTROL FOR HIGHWAY CONSTRUCTION & MAINTENANCE OPERATIONS.
- ALL WATER MAINS TO BE C.I.P. OR D.I.P. UNLESS OTHERWISE NOTED.
- TOP OF ALL WATER MAINS TO HAVE A MINIMUM OF 3'-6" COVER UNLESS OTHERWISE NOTED.
- VALVES ADJACENT TO TREES SHALL BE STRAPPED TO TREES.
- BLOCK ALL FITTINGS WITH CONCRETE.
- BURY LINE ELEV. ON FIRE HYDRANTS SHALL BE SET TO ELEV. SHOWN ON THE DWGS. ALL FIRE HYDRANTS SHALL BE STRAPPED & BUTTRESSED WITH CONCRETE IN ACCORDANCE WITH STD. DETAILS. SOIL AROUND THE FIRE HYDRANT TO BE COMPACTED IN ACCORDANCE WITH SECT 37.01 & 37.05 OF THE STD. SPECS.
- ALL WATER HOUSE CONNECTIONS SHALL BE FOR AN INSIDE METER SETTING.
- THE CONTRACTOR SHALL NOT OPERATE ANY WATER MAIN VALVES ON THE EXISTING SYSTEM.
- ALL SEWER MAINS SHALL BE C.S.P., R.C.S.P., V.C.P.X., A.C.P. CLASS 2400 OR P.V.C. UNLESS OTHERWISE NOTED.
- THE CONTRACTOR SHALL PROVIDE A JOINT IN ALL SEWER MAINS WITHIN 2' OF EXTERIOR MANHOLE WALL.
- ALL MANHOLES SHALL BE 4' INSIDE DIAMETER, UNLESS OTHERWISE NOTED.
- MANHOLES SHOWN WITH 12" AND 16" WALLS ARE BRICK MANHOLES ONLY.
- MANHOLES DESIGNATED W/T IN PLAN & PROFILE SHALL HAVE WATERTIGHT FRAME & COVERS, STD. DETAIL 81.45. WHERE WATERTIGHT MANHOLE FRAME & COVER IS USED, SET TOP OF FRAME 1'-6" ABOVE FINISHED GRADE.
- HOUSE(S) WITH THE SYMBOL "C.N.S." INDICATED THAT CELLAR CAN NOT BE SERVED.
- FOR ALL COPPER WATER HOUSE CONNECTIONS, UTILIZE FLARED TYPE FITTINGS ONLY.

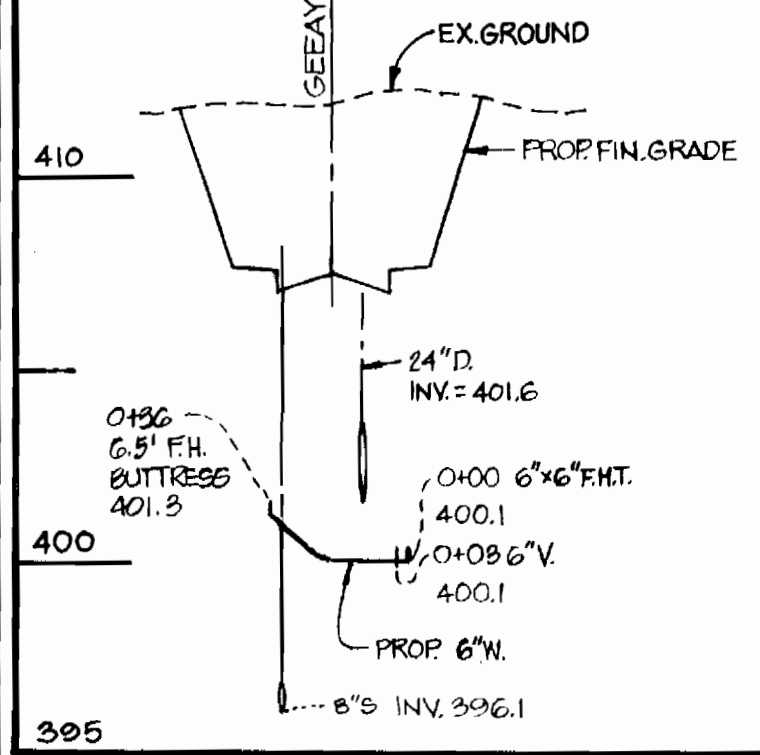
**BENCH MARKS**

- BM. 1 - IRON NAIL SET IN PAVING OF ELDEE DRIVE ELEV. = 399.08
- BM. 2 - HO. CO. CONTROL STA. NO. 3041001 ELEV. = 445.727

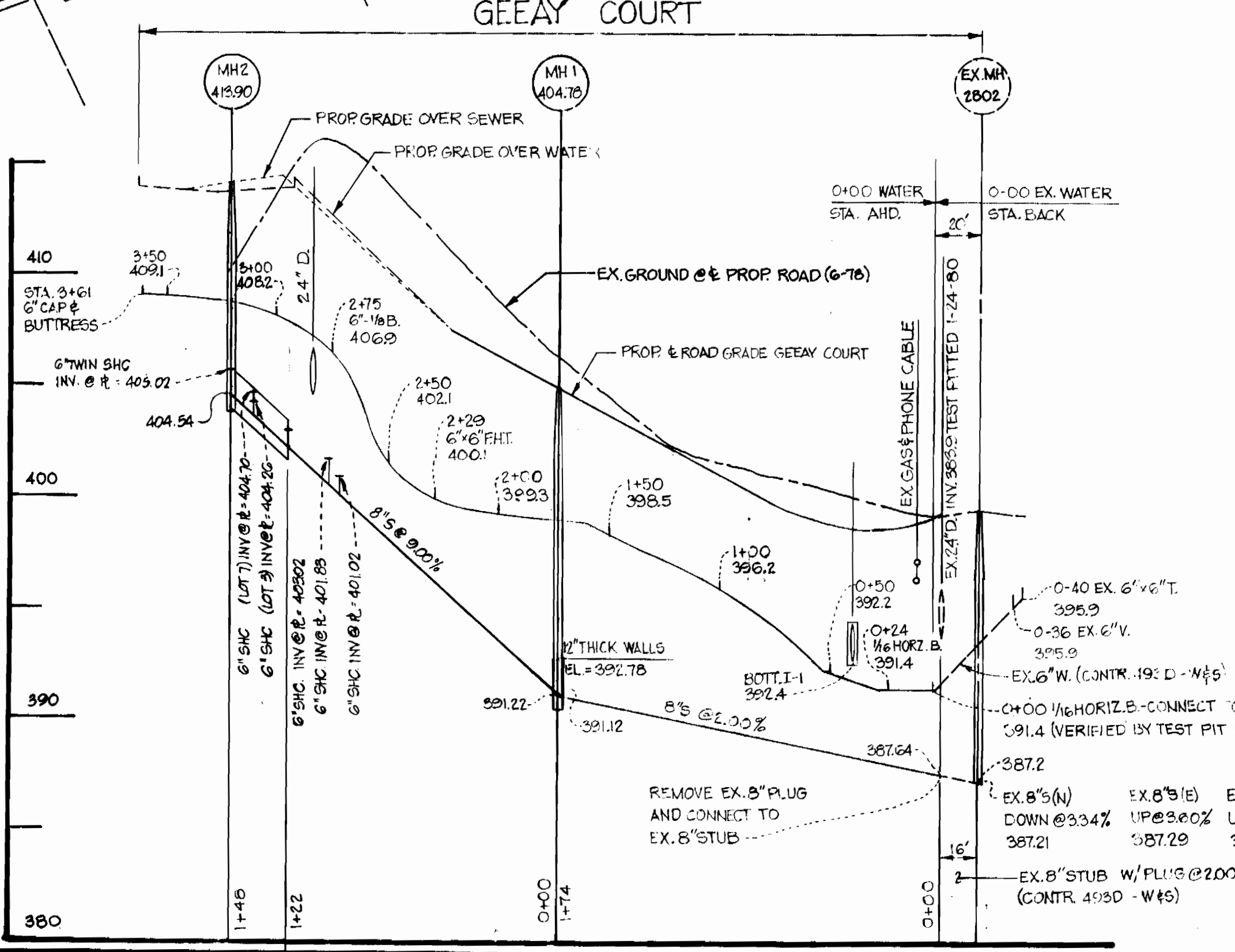


NOTE: SEDIMENT CONTROL MEASURES FOR THIS CONTRACT WILL BE IMPLEMENTED IN ACCORDANCE WITH ARTICLE 15 OF THE SPECIFICATIONS.

REVIEWED FOR HOWARD CO. AND MEETS TECHNICAL REQUIREMENTS.  
 JAMES M. HELMUTZ 7-26-83  
 U.S. SOIL CONSERVATION SERVICE  
 THE DEVELOPMENT IS APPROVED SOIL EROSION AND SEDIMENT CONTROL BY THE HOWARD SOIL CONSERVATION DISTRICT.  
 Wm. R. Kame 7-26-83  
 SOIL CONSERVATION DISTRICT



6" WATER TO FIRE HYDRANT PROFILE  
 SCALE: HORIZ. 1"=50'  
 VERT. 1"=5'



PROFILE  
 SCALE: HORIZ. 1"=50'  
 VERT. 1"=5'

DEPARTMENT OF PUBLIC WORKS  
 HOWARD COUNTY, MARYLAND  
 Director of Public Works: 7-28-83  
 Chief, Bureau of Engineering: 7-27-83  
 Chief, Bureau of Utilities: 7-28-83  
 Chief, Land Development Division: 7-27-83

**BOENDER ASSOCIATES, INC.**  
 ENGINEERS, PLANNERS, SURVEYORS.  
 COURTHOUSE SQUARE, ELLICOTT CITY, MD 21043

CONTRACT NO. 863D-W49

R.J. MUELLER PROPERTY  
 LOTS 1-5, 7, 10 GEEY COURT  
 PLANS & PROFILES

2 ND ELECTION DISTRICT

DRAWING NO. 1 OF 1  
 SCALE AS SHOWN  
 DES. L.L.Y.  
 DRW. D.C.B.  
 CHK. L.L.Y.  
 81016

