

REVIEWED FOR THE HOWARD SOIL CONSERVATION DISTRICT AND MEETS TECHNICAL REQUIREMENTS.

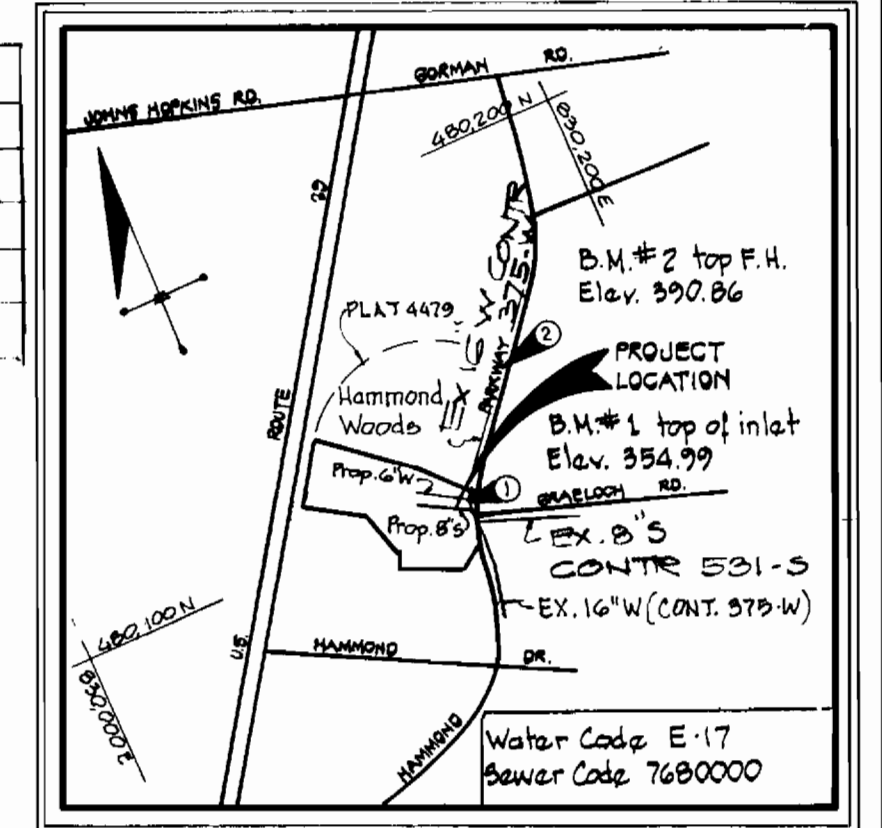
Signature: *[Signature]* DATE: 1-24-81  
 U.S. SOIL CONSERVATION SERVICE

THIS CONSTRUCTION PLAN IS APPROVED FOR SOIL EROSION AND SEDIMENT CONTROL BY THE HOWARD SOIL CONSERVATION DISTRICT.

Signature: *[Signature]* DATE: 1-28-81  
 APPROVED HOWARD SOIL CONSERVATION DISTRICT.

NOTE: Sediment Control Measures for this contract will be implemented in accordance with the Grading and Sediment Control Plan for F-7B-19B

TYPE OF BUILDING - SINGLE FAMILY RESIDENTIAL  
 NUMBER OF LOTS - 6  
 NUMBER OF WATER HOUSE CONNECTIONS - 6 SINGLE  
 NUMBER OF SANITARY HOUSE CONNECTIONS - 3 TWIN  
 DRAINAGE AREA - SAVAGE



VICINITY MAP  
 Scale: 1"=600'

GENERAL NOTES

- Approximate locations of existing utilities are shown. The contractor shall take all necessary precautions to protect the existing utilities and to maintain uninterrupted service. Any damage incurred due to the contractor's operations shall be repaired immediately at the contractor's expense.
- All pipe elevations shown are invert elevations.
- The contractor shall notify Miss Utility (550-0100) at least three (3) days prior to beginning any construction shown hereon.
- See standard details bound in specifications.
- Clear all utilities by a minimum of 6'. Clear all utility poles by 4'-0" minimum or tunnel as required. Any costs incurred to the contractor for tunneling or bracing poles shall be included in the unit price bid for excavation.
- The contractor shall provide a pipe joint in all sewer mains within 2'-0" of exterior manhole walls.
- All manholes shall be 4'-0" inside diameter unless otherwise noted.
- Buttress or anchor all water main fittings with concrete. All valves shall be strapped to trees in accordance with standard details.
- All water mains to have a minimum of 36" cover unless otherwise noted.
- All fire hydrants shall be strapped to trees and shall be buttressed with concrete in accordance with standard details. Cost of strapping fire hydrants and valves to be included in the unit price bid for furnishing and installing fire hydrants. Soil around the fire hydrant to be compacted in accordance with Section 5-15 of the Standard Specifications.
- Bury line elevations on fire hydrants shall be set to the elevations on the plan.
- All horizontal and vertical controls are based on the Maryland State Grid System.
- All water mains to be CIP, DIP unless otherwise shown.
- All valves shall be strapped to face in accordance with standard details.
- Block all fittings with concrete see details bound in specification.
- All sewer mains shall be CSPX, VCPX or ACP Class 2400 unless otherwise noted.
- Contractor shall locate existing utilities in advance of construction operations in the vicinity of proposed utilities.
- Trees are to be protected from damage to maximum extent. Trees located within the construction strip are not to be removed or damaged by the contractor.
- Contractor shall remove trees, stumps and rocks along line of excavation as directed by the Engineer. Payment for such removal shall be included in the unit price bid for Water and Sewer Mains.
- Place regulation "Man Working" and warning signs as required to comply with Maryland State Highway Administration Manual of Traffic Control for Highway Construction and Maintenance Operations.

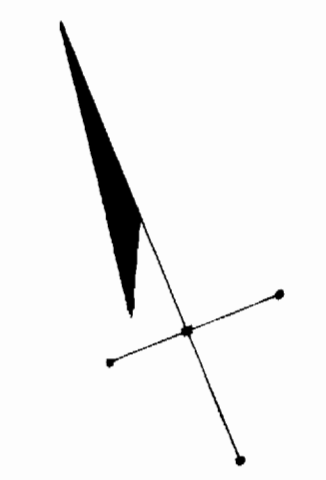
BENCH MARKS

- HUDKINS ASSOC. B.M. #1 Elev. 354.99  
 a-cut in top of inlet at Hammond Parkway & GraeLoch Road.
- HUDKINS ASSOC. B.M. #2 Elev. 390.86  
 Bonnet Nut top exist. F.H., N.E. Corner Lot No. 1 Hammond Woods Cont. 2883 D-W#5.

QUANTITIES

ITEM	ESTM'D.	AS-BUILT	MATERIAL / SUPPLIER
8" SEWER	222 LF	219 LF	CERTAIN-TEED - PVC
6" WATER	254 LF	239 LF	ATLANTIC STATES - DIP
MANHOLES	1-11VE.		
VALVE	1-6"		
FIRE HYDRANT	1 EA.	1 EA.	AMERICAN DARLING

CONTRACT NO. 2861-D-W#5  
 GAVIN WAY  
 GRAELOCH WOODS  
 WATER & SEWER MAIN EXTENSION



U.S. ROUTE 29  
 S.M.A. PLAT #3777A

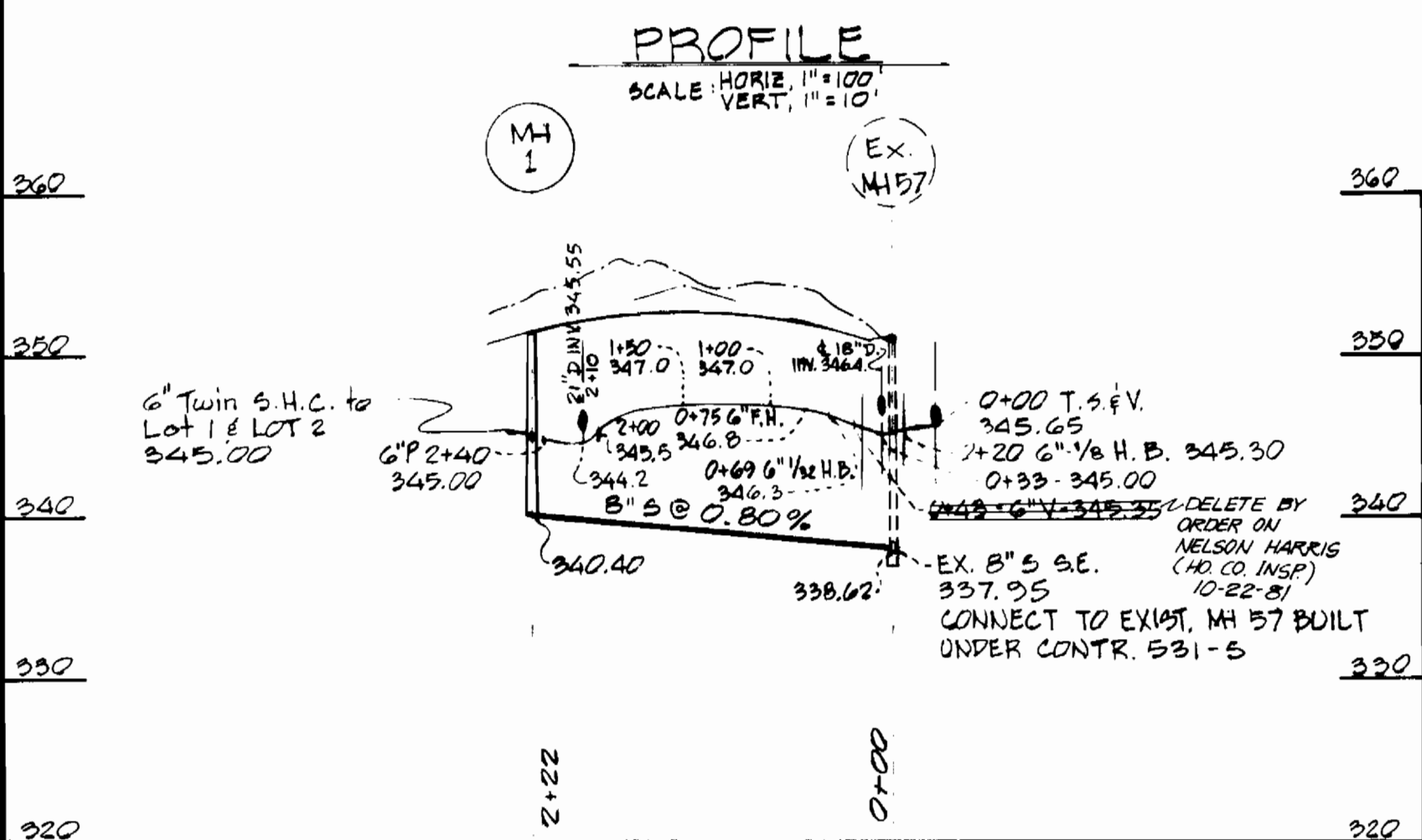
MD. STATE HIGHWAY ADMIN.  
 666/663

STATE ROADS COMM.  
 OF MARYLAND  
 556/230

MD. S.M.A. PLAT # 38620

PLAN  
 SCALE 1"=50'

*[Signature]*  
 1-22-81



DEPARTMENT OF PUBLIC WORKS  
 HOWARD COUNTY, MARYLAND  
 Director of Public Works: *[Signature]* DATE: 1-24-81  
 Chief of Engineering: *[Signature]* DATE: 1-29-81  
 Chief of Utilities: *[Signature]* DATE: 1-28-81  
 Chief of Land Development Division: *[Signature]* DATE: 1-24-81

HUDKINS ASSOCIATES INC.  
 ENGINEERS  
 JOSEPH SQUARE  
 COLUMBIA, MARYLAND

CONTRACT NO. 2861-D-W#5

PLAN HAMMOND BRANCH SEWERS  
 AND WATER EXTENSIONS

GRAELOCH WOODS  
 ELECTION DISTRICT NO. 6 HOWARD COUNTY, MARYLAND

DRAWING NO. 1 OF 1  
 SCALE AS NOTED  
 DES. T.K.S., JR.  
 DRAWN: B.D.B.  
 CHKD: T.K.S., JR.