

Water and Sewer Code County Use	
Sewer No.	N/A
Water No.	DO5, DO6
Waste Water Disposal	N/A
Type of Building	S.F.
No. of SHC	N/A
No. of WHC	11

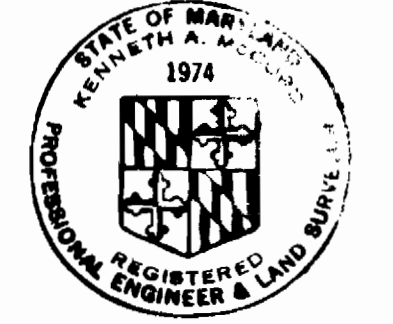
LOCATION MAP
Scale: 1"=600'

GENERAL NOTES

- APPROXIMATE LOCATION OF EXISTING MAINS ARE SHOWN. THE CONTRACTOR SHALL TAKE ALL NECESSARY PRECAUTIONS TO PROTECT EXISTING MAINS AND SERVICES AND MAINTAIN UNINTERRUPTED SUPPLY. ANY DAMAGE INCURRED SHALL BE REPAIRED IMMEDIATELY.
- ALL PIPE ELEVATIONS SHOWN ARE INVERT ELEVATIONS.
- THE CONTRACTOR SHALL LOCATE EXISTING UTILITIES A MINIMUM OF TWO WEEKS IN ADVANCE OF CONSTRUCTION OPERATIONS IN VICINITY OF UTILITIES.
- THE CONTRACTOR SHALL NOTIFY THE FOLLOWING UTILITIES OR AGENCIES AT LEAST FIVE DAYS BEFORE STARTING WORK SHOWN ON THESE PLANS:
BALTIMORE GAS AND ELECTRIC COMPANY - UNDERGROUND ELECTRIC DISTRIBUTION ENGINEERING DAMAGE CONTROL 234-5691
- UNDERGROUND GAS DISTRIBUTION ENGINEERING 234-5621
CHESAPEAKE AND POTOMAC TELEPHONE COMPANY 393-3040.
MISS. UTILITY 1-559-0100
- FOR ALL STANDARD DETAILS SEE STANDARDS BOUND IN SPECIFICATIONS.
- ALL HORIZONTAL AND VERTICAL CONTROLS ARE BASED ON MARYLAND STATE DATUM.
- CLEAR ALL UTILITIES BY A MINIMUM OF 6".
- BLOCK ALL FITTINGS WITH CONCRETE, SEE STANDARDS BOUND IN SPECIFICATIONS.
- ALL WATER MAINS SHALL HAVE A MINIMUM OF 3' COVER.
- ALL WATER MAINS SHALL BE C.I.P., D.I.P. OR A.C.P. UNLESS OTHERWISE NOTED.
- ALL VALVES SHALL BE STRAPPED TO TEES WHERE APPLICABLE IN ACCORDANCE WITH THE STANDARD DETAILS.
- FIRE HYDRANTS SHALL BE STRAPPED AND BUTTRESSED IN ACCORDANCE WITH THE STANDARD DETAILS. SOIL AROUND THE HYDRANTS SHALL BE COMPACTED IN ACCORDANCE WITH SECTION 5-15 OF THE STANDARD SPECIFICATIONS.
- PAYMENT FOR STRAPPING FIRE HYDRANTS AND VALVES WILL BE INCLUDED IN UNIT PRICE BID FOR FURNISHING AND LAYING WATER MAINS.
- CLEAR ALL UTILITIES BY A MINIMUM OF 6", CLEAR ALL POLES 2'-0" MINIMUM OR TUNNEL AS REQUIRED.
- PROFILE STATIONS MAY HAVE TO BE ADJUSTED AS REQUIRED TO CONFORM TO PLAN DIMENSIONS.
- MINIMUM ELEVATION ON FIRE HYDRANTS SHALL BE SET THE SAME AS EDGE OF PAVING, TOP OF CURB, OR AS DIRECTED BY THE ENGINEER IN THE FIELD.
- ALL W.H.C.'S SHALL BE 1/4" DIAMETER UNLESS OTHERWISE NOTED.
- WATER SERVICES SHALL BE FOR INSIDE METER SETTINGS.

PLAN
Scale: 1"=50'

QUANTITIES			
ITEM	BID	AS-BUILT	MATERIAL/SUPPLIER
8" Water	2215 LF	2204 LF	DIP - (Atlantic State)
6" Water	20 LF	192 LF	DIP - (Atlantic State)
Fire Hydrant	4	4	American-Darling



Kenneth J. McLeod

MAYFIELD AVENUE WATER
Project No. W-8-8099
Contract No. 856-W

WHITMAN, REQUARDT & ASSOCIATES
ENGINEERS
1304 ST. PAUL ST.
BALTIMORE, MARYLAND

DEPARTMENT OF PUBLIC WORKS
HOWARD COUNTY, MARYLAND
James F. Newman 5-2-79
DIRECTOR OF PUBLIC WORKS - DATE

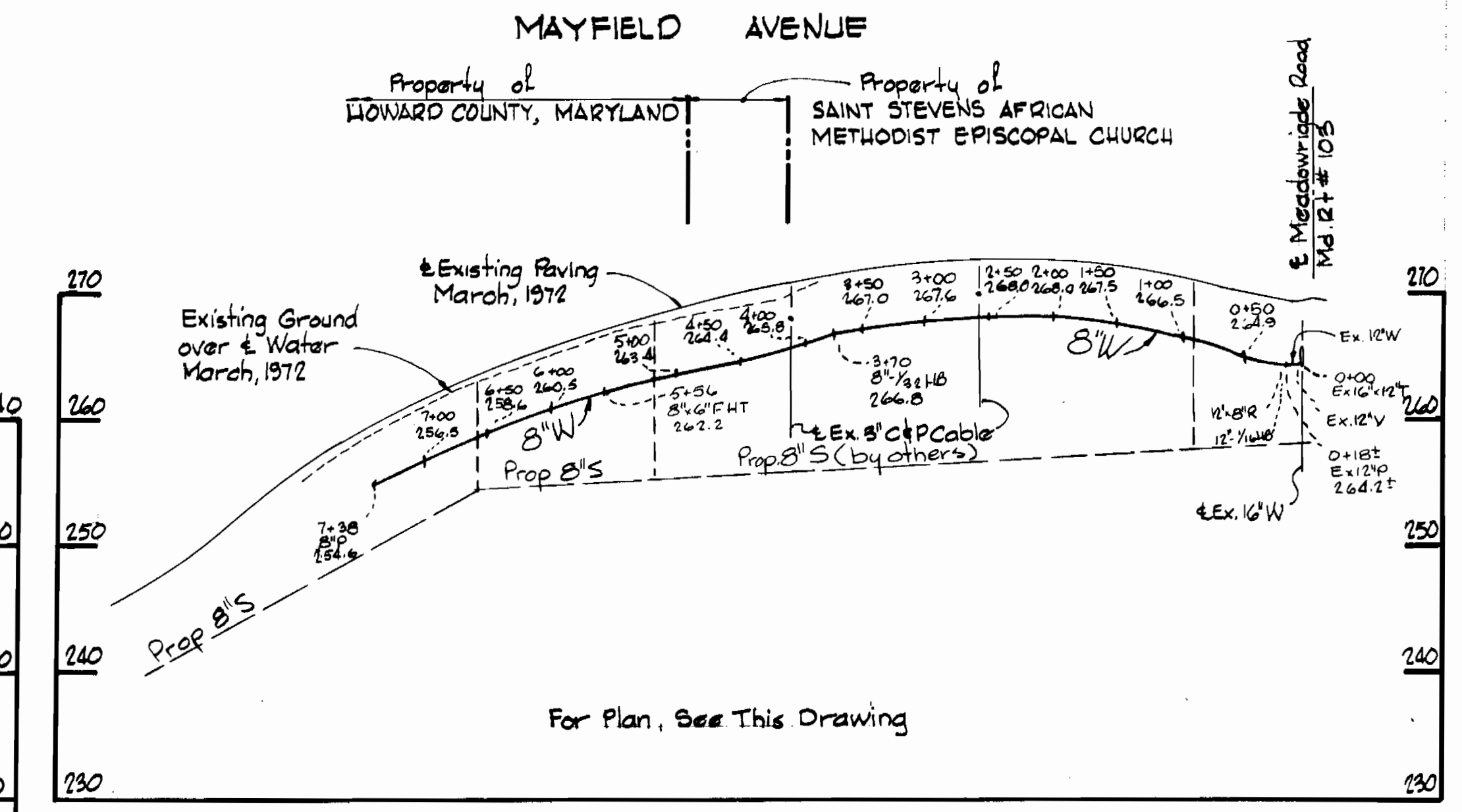
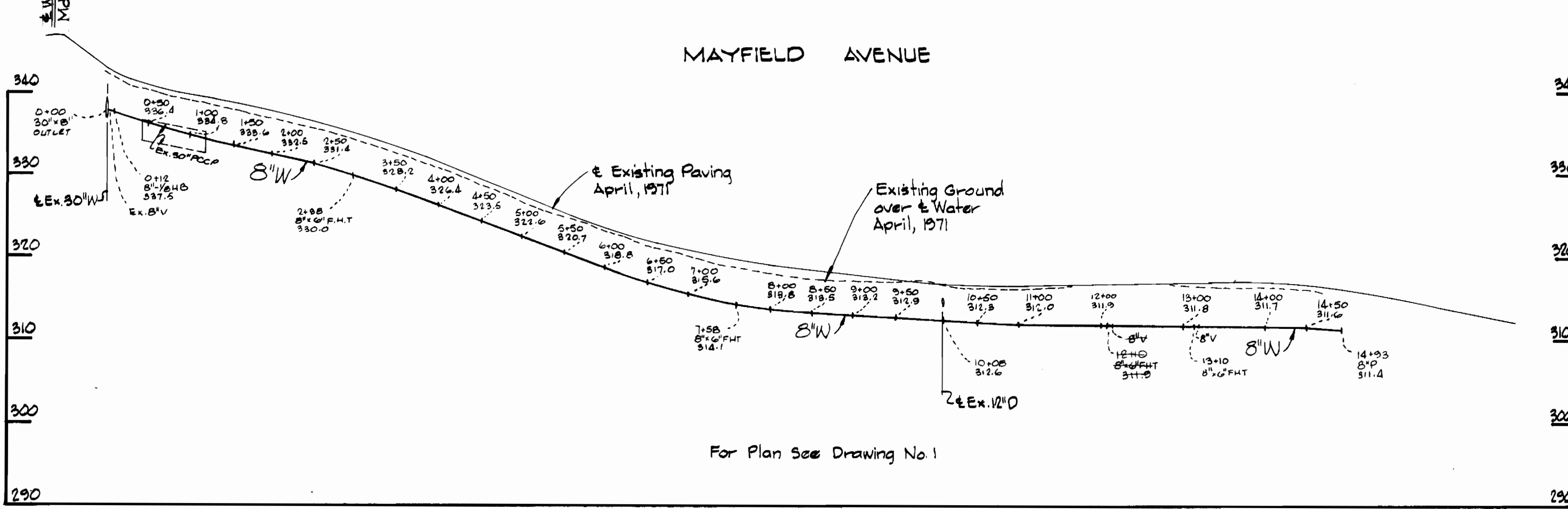
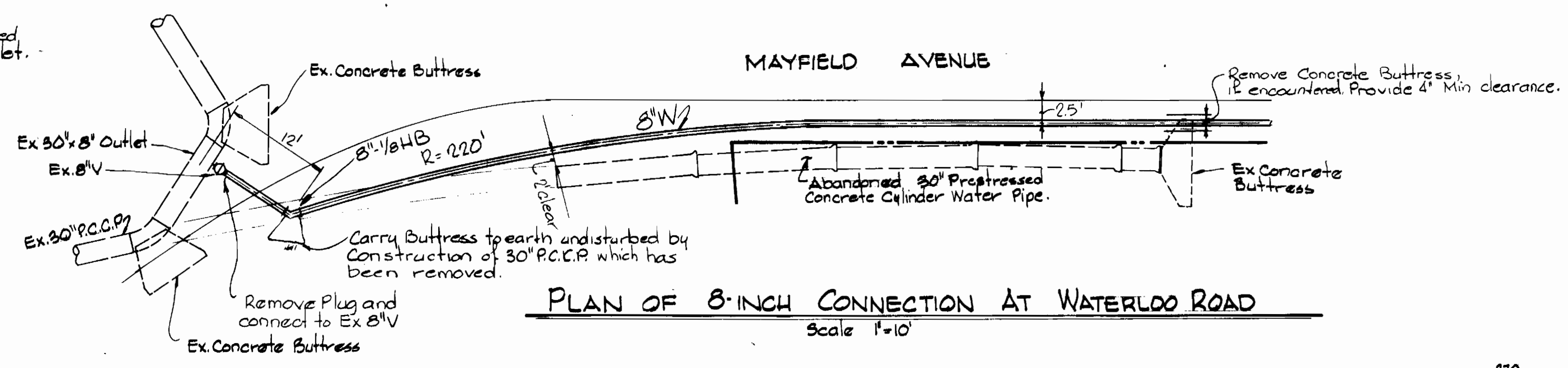
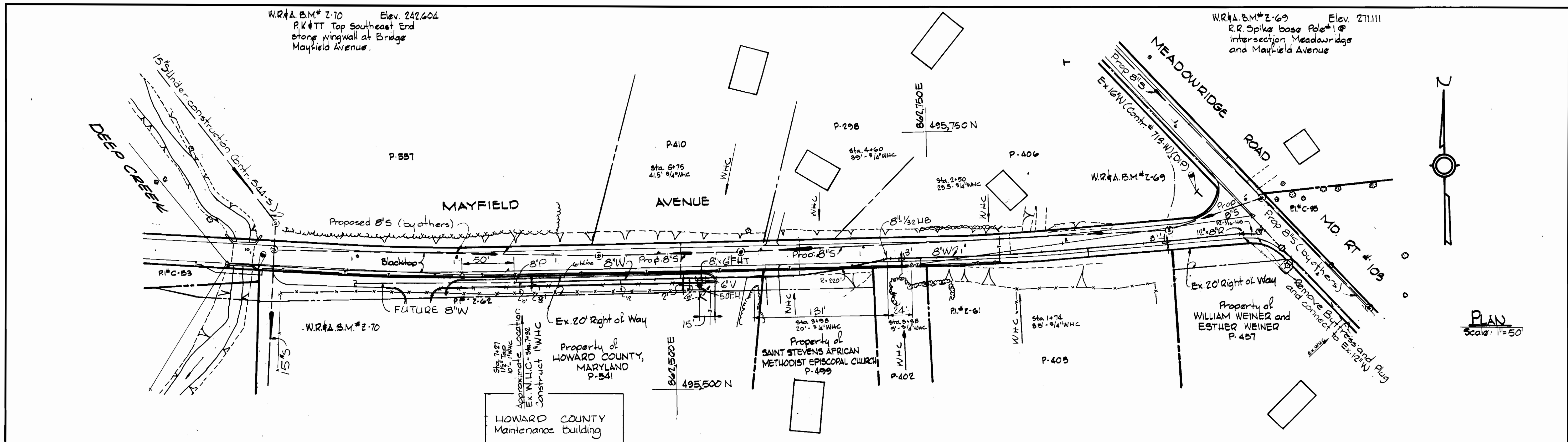
W.O. Lister 5-1-79
CHIEF-BUREAU OF ENGINEERING - DATE

CONTRACT NO. 856-W
PROJECT NO. W-8-8099

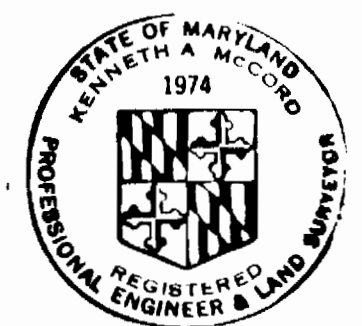
PLAN OF
WATER MAINS

ELECTION DISTRICT
ELKRIDGE NO.1

DRAWING NO. 1 OF 2
SCALE AS SHOWN



PROFILES
Scale: Horizontal: 1"=100'
Vertical: 1"=10'



Kenneth A. McCord

MAYFIELD AVENUE WATER
Project No. W-8-8099
Contract No. 856-W

WHITMAN, REQUARDT & ASSOCIATES ENGINEERS 1304 ST. PAUL ST. BALTIMORE, MARYLAND	DEPARTMENT OF PUBLIC WORKS HOWARD COUNTY, MARYLAND Director of Public Works - DATE <i>Henry F. Nunn</i> 5-2-79	CONTRACT NO. 856-W PROJECT NO. W-8-8099 Chief-Bureau of Engineering - DATE <i>W.D. Pellet</i> 5-1-79	PLAN AND PROFILES OF WATER MAINS	ELECTION DISTRICT ELKRIDGE NO. 1	DRAWING NO. 2	SCALE AS SHOWN	R.B.# 4905 R.B.# 5154 R.B.# 5153 495-10
					OF 2	SHOWN	February 26, 1980 As-Built