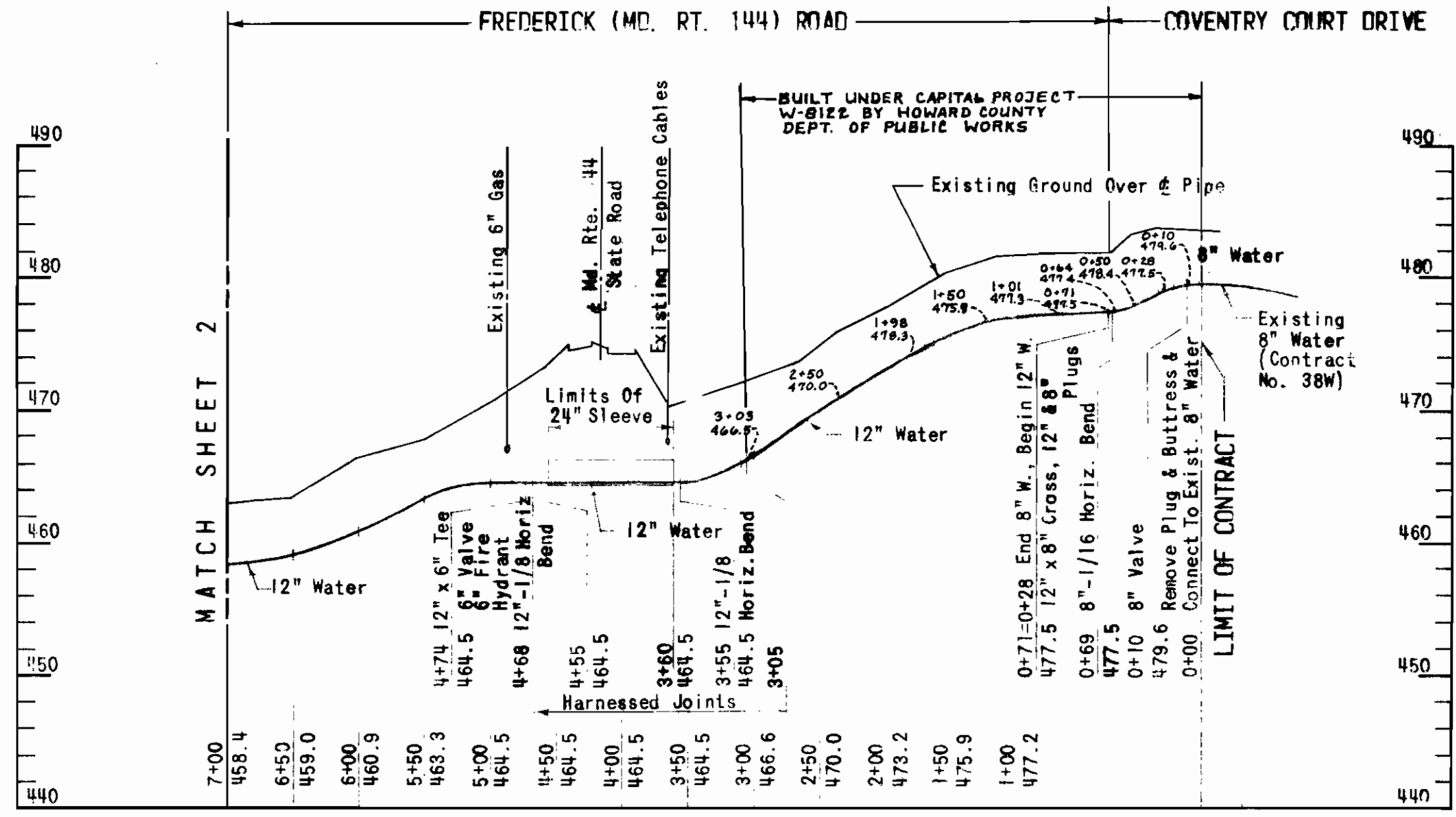


GENERAL NOTES

- For All Construction Work Identified On The Contract Drawings As "Standard Details", Comply With Howard County, Maryland, Department Of Public Works, Standard Details For Water Mains And Sanitary Sewers Bound With The Contract Specifications.
- Existing Utilities Shown On The Contract Drawings Have Been Located From The Best Information Available, But No Guarantee Is Made For The Accuracy Of Horizontal Or Vertical Utility Alignments. The Contractor Shall Verify The Location Of All Existing Utilities In The Vicinity Of Proposed Work A Minimum Of Two Weeks In Advance Of Anticipated Construction Operations.
- The Contractor Shall Notify The Baltimore Gas And Electric Company, By Calling 539-8000, Extension 69, 72 Hours Prior To Any Construction In The Vicinity Of Any Gas And Electric Facilities. The Contractor Shall Notify The C A P Telephone Company, By Calling Collect 685-0400 In Baltimore, 72 Hours Prior To Any Construction In The Vicinity Of Any Telephone Company Facilities.
- The Contractor Shall Take All Necessary Precautions To Protect Existing Utilities And Services And Maintain Uninterrupted Supply. Any Damage Incurred To A Utility Shall Be Immediately Reported To The Utility Owner. Such Damage Shall Be Repaired As Directed By The Utility Owner, At No Additional Cost To Howard County.
- Clear All Existing Utilities By A Minimum of 6" Vertical.
- The Contractor Shall Conduct All Operations In A Manner Which Will Not Impede Existing Drainage Ways Or Structures.
- The Contractor Shall Protect All Drainage Conduits Or Structures In Place Unless Scheduled For Replacement In Contract Drawings.
- Trees And Shrubbery Shall Be Protected From Damage, Unless Marked In The Field For Removal.
- All Horizontal Controls Are Based On Maryland State Plane Coordinate System.
- All Vertical Controls Are Based On U. S. Coast And Geodetic Coordinate System.
- Bench Marks Are Shown Thus:
- Elevations Shown To Right Of Profile Stationing Are Invert Elevations Of Proposed Water Main.
- Proposed Water Mains Shall Have 3.5 Feet Minimum Cover, Measured From Existing Grade Unless Otherwise Shown On Contract Drawing Profiles.
- Fire Hydrant "Bury Lines" Shall Be Set To Elevations Shown On The Contract Drawings.
- House Service Locations Are Shown Schematically On The Contract Drawings. Final House Service Locations Will Be Determined In Field By Howard County Department Of Public Works, In Advance Of Construction.



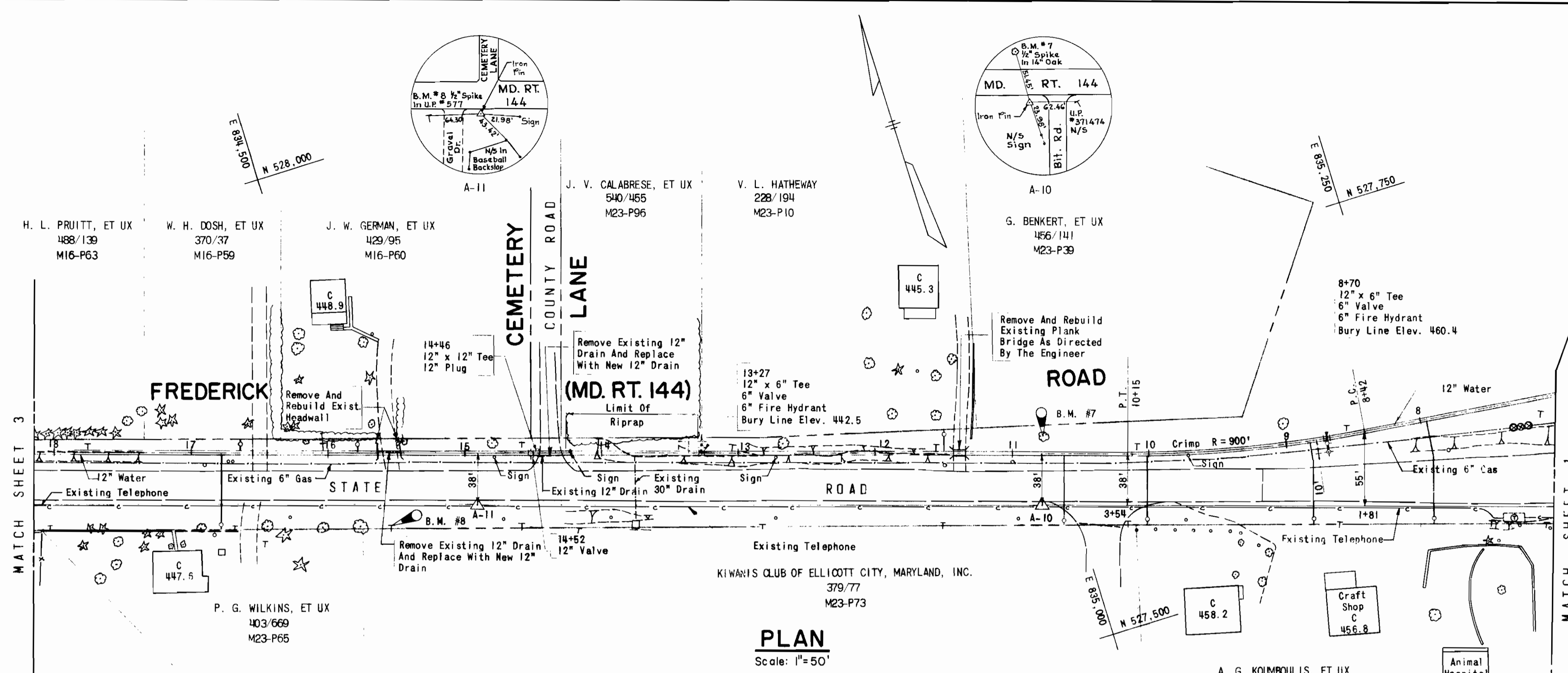
BENCH MARKS

B.M. #5	Elev. 476.90
1/2" Spike In Utility Pole #1, 115.05' Northeast Of Traverse Point A-6 On North Side Of U. S. Route 40.	
B.M. #6	Elev. 472.58
"X" Cut On Guard Post 3.61' South Of Traverse Point A-9 On South Side Of Frederick (Md. Rt. 144) Road.	

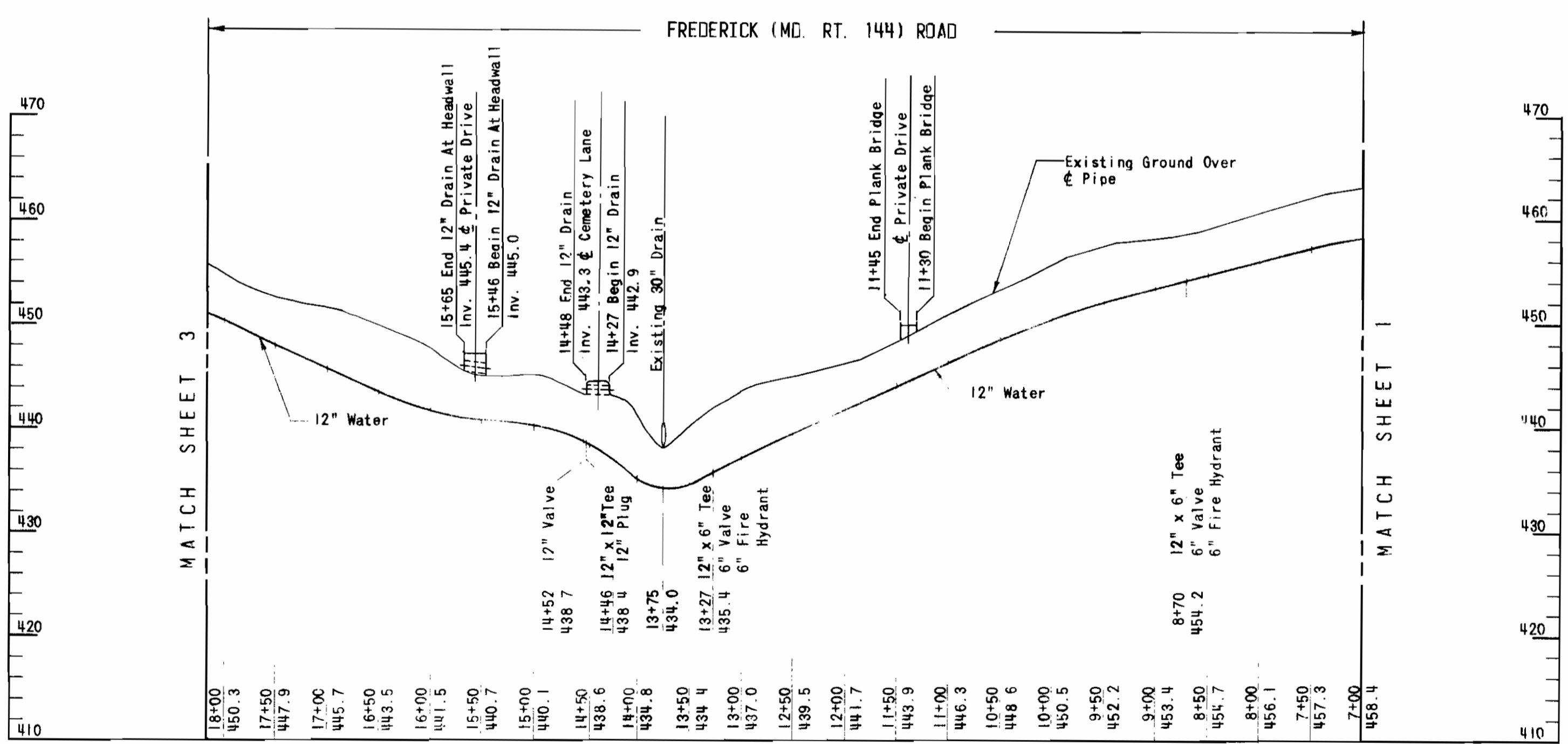
NOTES

- Harness All Pipe And Fitting Joints From Stations 3+05 Thru 4+68, Inclusive, Or To Nearest Joint In Excess Of These Limits.

RUMMEL, KLEPPER & KAHL CONSULTING ENGINEERS BALTIMORE, MARYLAND	DEPARTMENT OF PUBLIC WORKS HOWARD COUNTY, MARYLAND	CONTRACT NO. 848-W	WATER MAIN PLAN AND PROFILE	MARYLAND ROUTE 144 SECOND ELECTION DISTRICT	DRAWING NO. 1	SCALE AS SHOWN
					OF 4	



PLAN
Scale: 1"=50'



PROFILE
Scale: Horiz. 1"=100'
Vert. 1"=10'

BENCH MARKS

B.M. #7	Elev. 452.68
1/2" Spike In 14" Oak 51.45' Northeast Of Traverse Point A-10 On North Side Of Frederick (Md. Rt. 144) Road.	
B.M. #8	Elev. 446.95
1/2" Spike In Utility Pole #577 64.30' West Of Traverse Point A-11 On South Side Of Frederick (Md. Rt. 144) Road.	

RUMMEL, KLEPPER & KAHL
CONSULTING ENGINEERS
BALTIMORE, MARYLAND

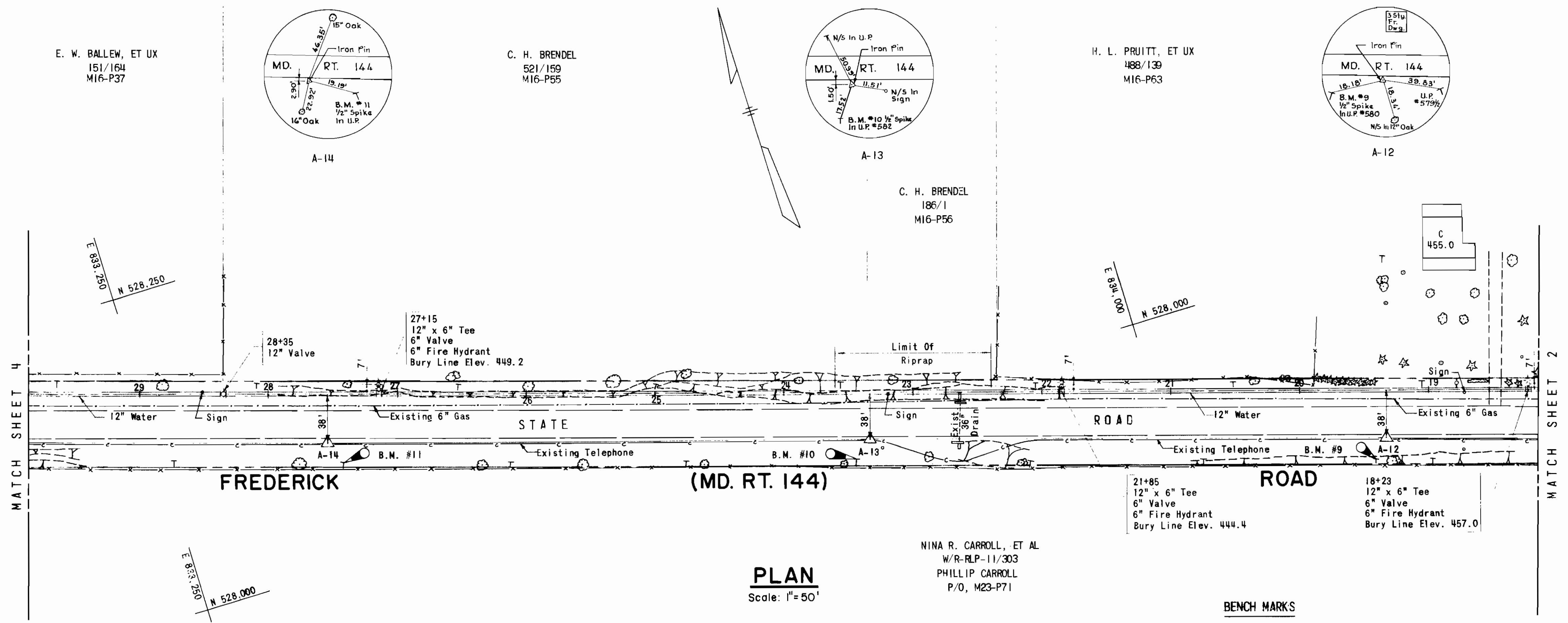
DEPARTMENT OF PUBLIC WORKS
HOWARD COUNTY, MARYLAND

CONTRACT NO. 848-W

**WATER MAIN
PLAN AND PROFILE**

**MARYLAND ROUTE 144
SECOND ELECTION DISTRICT**

DRAWING NO. 2 OF 4 SCALE AS SHOWN

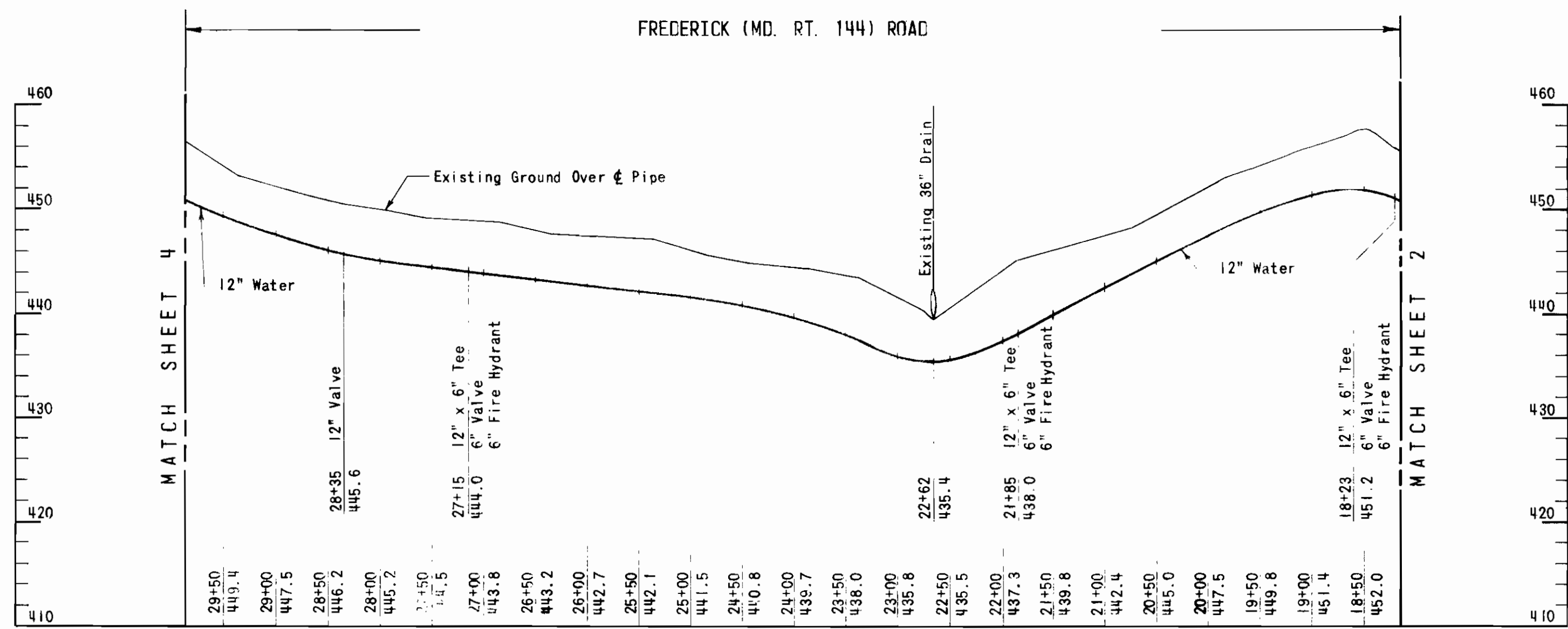


PLAN
Scale: 1"=50'

NINA R. CARROLL, ET AL
W/R-RLP-11/303
PHILLIP CARROLL
P/O, M23-P71

BENCH MARKS

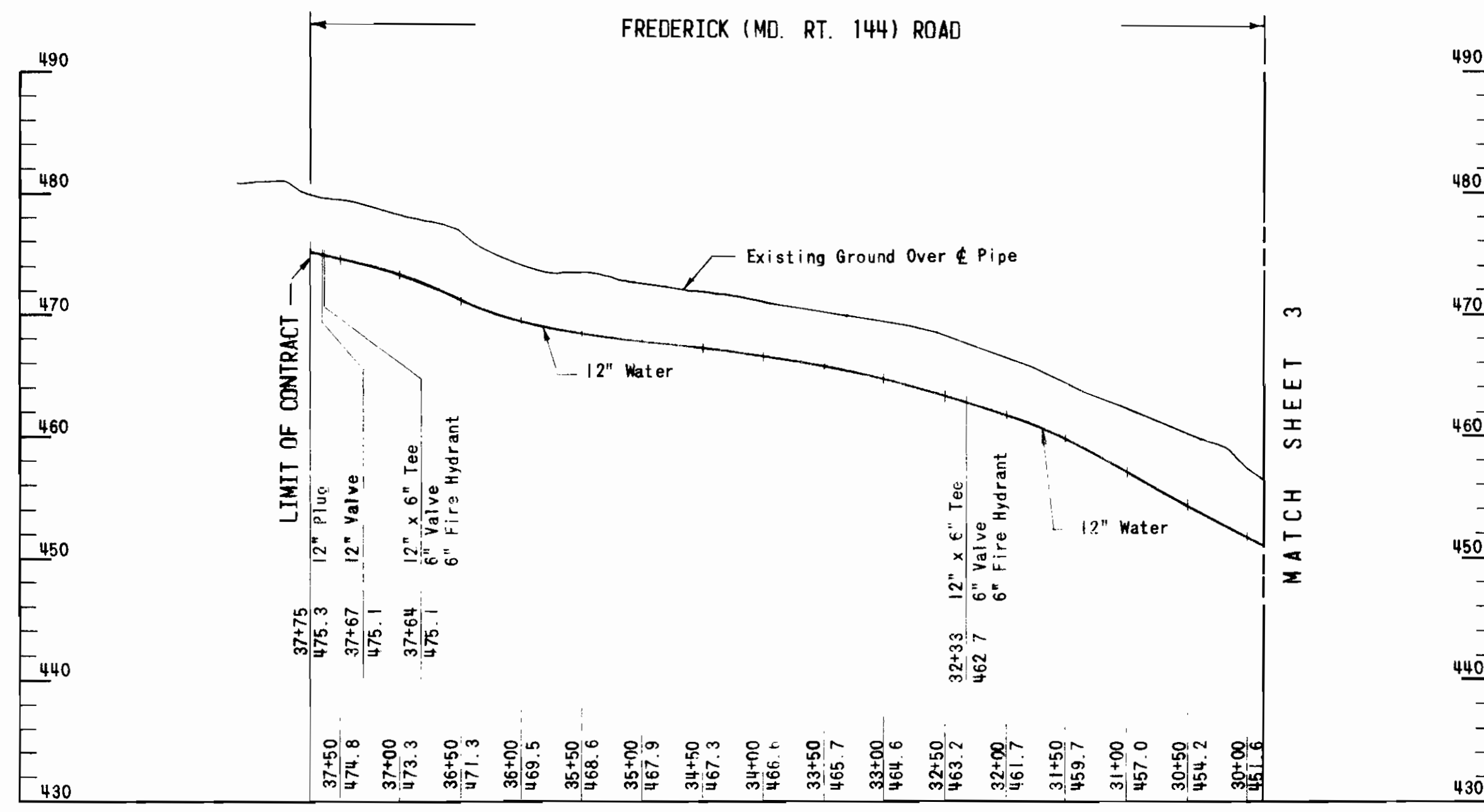
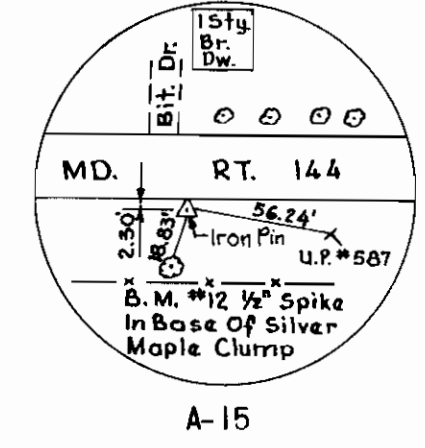
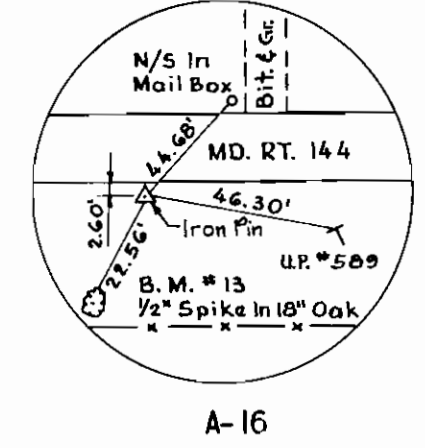
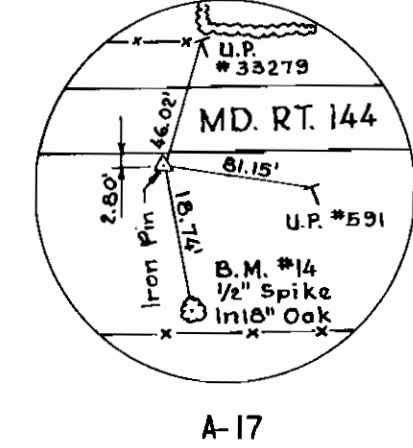
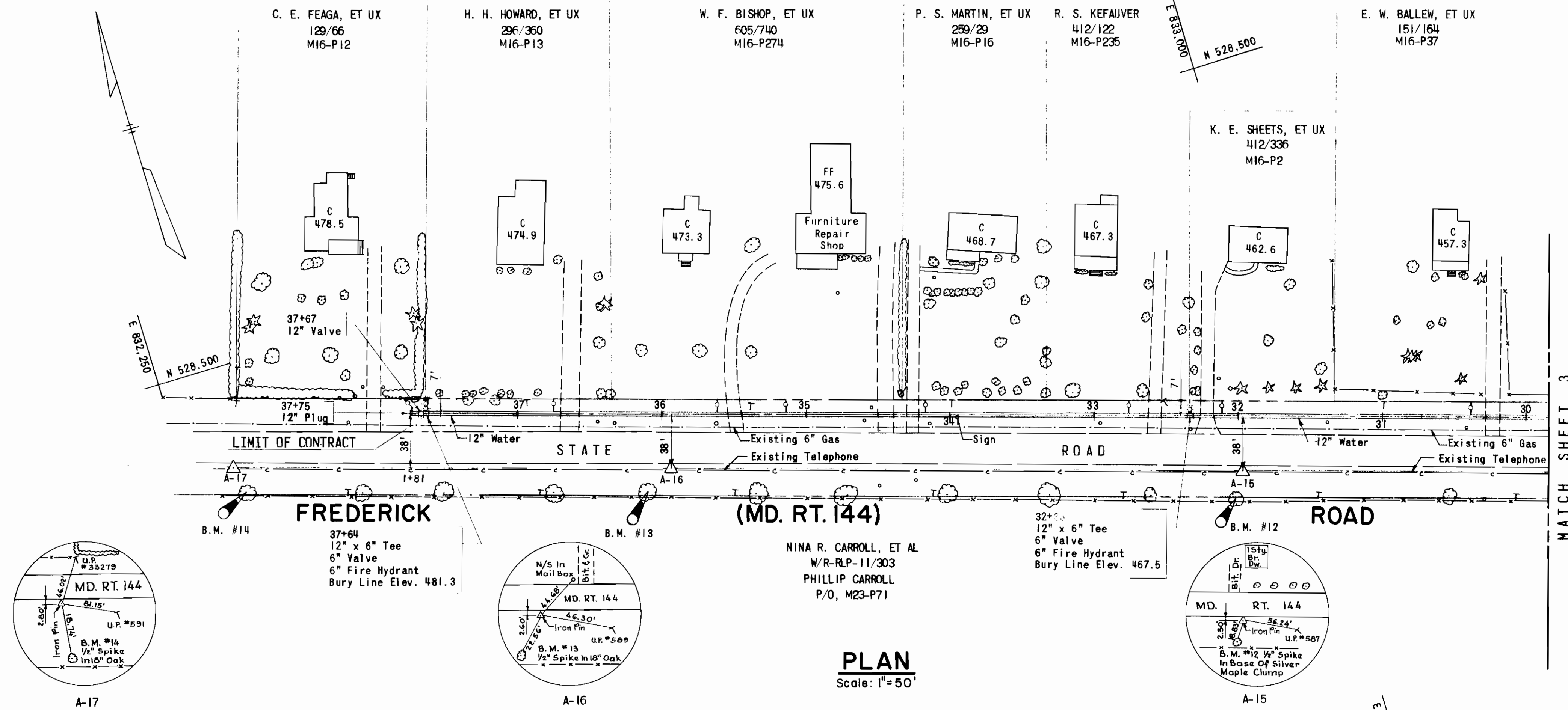
- B.M. #9 Elev. 455.72
1/2" Spike In Utility Pole #580 18.18' Southwest Of Traverse Point A-12 On South Side Of Frederick (Md. Rt. 144) Road.
- B.M. #10 Elev. 447.88
1/2" Spike In Utility Pole #582 17.52' Southwest Of Traverse Point A-13 On South Side Of Frederick (Md. Rt. 144) Road.
- B.M. #11 Elev. 450.28
1/2" Spike In Utility Pole 19.19' South Of Traverse Point A-14 On South Side Of Frederick (Md. Rt. 144) Road.



PROFILE
Scale: Horiz. 1"=100'
Vert. 1"=10'

MARYLAND ROUTE 144
CONTRACT NUMBER 848-W

RUMMEL, KLEPPER & KAHL CONSULTING ENGINEERS BALTIMORE, MARYLAND	DEPARTMENT OF PUBLIC WORKS HOWARD COUNTY, MARYLAND	CONTRACT NO. 848-W	WATER MAIN PLAN AND PROFILE	MARYLAND ROUTE 144 SECOND ELECTION DISTRICT	DRAWING NO. 3	SCALE AS SHOWN
					OF 4	OF 4



BENCH MARKS

B.M. #12	Elev. 467.69
1/2" Spike in Base of Silver Maple Clump 18.83' Southwest of Traverse Point A-15 On South Side of Frederick (Md. Rt. 144) Road.	
B.M. #13	Elev. 475.75
1/2" Spike in 18" Oak 22.56' Southwest of Traverse Point A-16 On South Side of Frederick (Md. Rt. 144) Road.	
B.M. #14	Elev. 484.03
1/2" Spike in 18" Oak 18.74' South of Traverse Point A-17 On South Side of Frederick (Md. Rt. 144) Road.	

RUMMEL, KLEPPER & KAHL
CONSULTING ENGINEERS
BALTIMORE, MARYLAND

DEPARTMENT OF PUBLIC WORKS
HOWARD COUNTY, MARYLAND

CONTRACT NO. 848-W

WATER MAIN
PLAN AND PROFILE

MARYLAND ROUTE 144
SECOND ELECTION DISTRICT

DRAWING NO. 4 OF 4
SCALE AS SHOWN