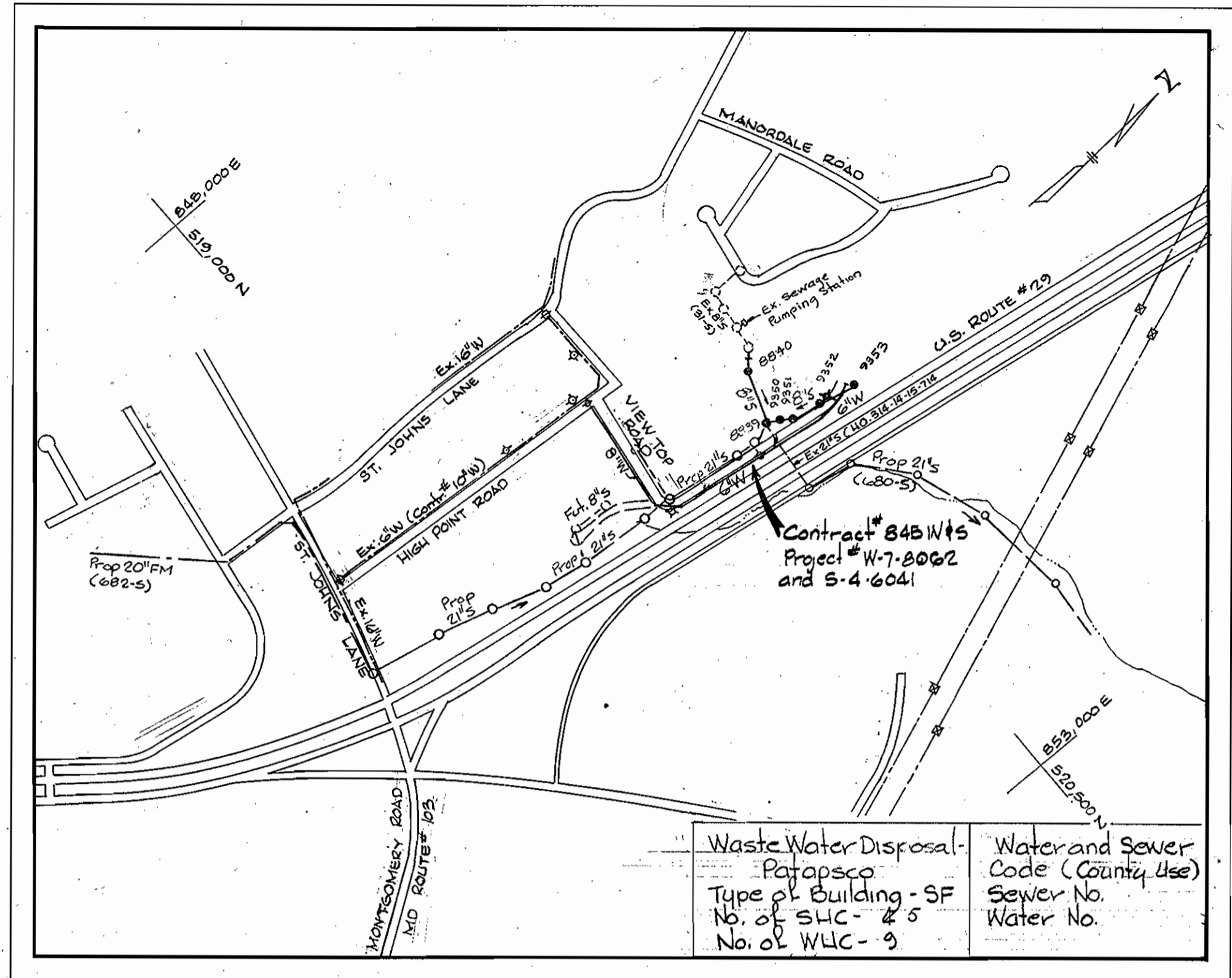


GENERAL NOTES

- APPROXIMATE LOCATION OF EXISTING MAINS ARE SHOWN. THE CONTRACTOR SHALL TAKE ALL NECESSARY PRECAUTIONS TO PROTECT EXISTING MAINS AND SERVICES AND MAINTAIN UNINTERRUPTED SUPPLY. ANY DAMAGE INCURRED SHALL BE REPAIRED IMMEDIATELY.
- ALL PIPE ELEVATIONS SHOWN ARE INVERT ELEVATIONS.
- THE CONTRACTOR SHALL LOCATE EXISTING UTILITIES A MINIMUM OF TWO WEEKS IN ADVANCE OF CONSTRUCTION OPERATIONS IN VICINITY OF UTILITIES.
- THE CONTRACTOR SHALL NOTIFY THE FOLLOWING UTILITIES OR AGENCIES AT LEAST FIVE DAYS BEFORE STARTING WORK SHOWN ON THESE PLANS:
BALTIMORE GAS AND ELECTRIC COMPANY - UNDERGROUND ELECTRIC DISTRIBUTION ENGINEERING DAMAGE CONTROL 234-5691
UNDERGROUND GAS DISTRIBUTION ENGINEERING 234-5621
CHESAPEAKE AND POTOMAC TELEPHONE COMPANY 393-3648.
MISS UTILITY - 1 - 559-0100
- FOR ALL STANDARD DETAILS SEE STANDARDS BOUND IN SPECIFICATIONS.
- ALL HORIZONTAL AND VERTICAL CONTROLS ARE BASED ON MARYLAND STATE DATUM.
- CLEAR ALL UTILITIES BY A MINIMUM OF 6".
- BLOCK ALL FITTINGS WITH CONCRETE, SEE STANDARDS BOUND IN SPECIFICATIONS.
- ALL WATER MAINS SHALL HAVE A MINIMUM OF 3 1/2' COVER.
- ALL WATER MAINS SHALL BE C.I.P., OR D.I.P. UNLESS OTHERWISE NOTED.
- ALL VALVES SHALL BE STRAPPED TO TEES WHERE APPLICABLE IN ACCORDANCE WITH THE STANDARD DETAILS.
- ALL FIRE HYDRANTS SHALL BE STRAPPED AND BUTTRESSED IN ACCORDANCE WITH THE STANDARD DETAILS. SOIL AROUND THE HYDRANTS SHALL BE COMPACTED IN ACCORDANCE WITH SECTION 5-15 OF THE STANDARD SPECIFICATIONS.
- PAYMENT FOR STRAPPING FIRE HYDRANTS AND VALVES WILL BE INCLUDED IN UNIT PRICE BID FOR FURNISHING AND LAYING WATER MAINS.
- BURY LINE ELEVATIONS ON FIRE HYDRANTS SHALL BE SET TO EDGE OF PAVING OR AS DIRECTED BY THE ENGINEER IN THE FIELD.
- ALL W.H.C.'S SHALL BE 3/4" DIAMETER UNLESS OTHERWISE NOTED.
- WATER SERVICES SHALL BE FOR INSIDE METER SETTINGS.
- ALL SEWER MAINS SHALL BE C.S.P.X., V.C.P.X. OR A.C.P. CLASS 2400 UNLESS OTHERWISE NOTED.
- ALL MANHOLES SHALL BE 4'-0" INSIDE DIAMETER, UNLESS OTHERWISE NOTED.
- THE CONTRACTOR SHALL PROVIDE A JOINT IN ALL SEWER MAINS WITHIN 2'-0" OF EXTERIOR MANHOLE WALLS.
- TREES ARE TO BE PROTECTED FROM DAMAGE TO MAXIMUM EXTENT. TREES LOCATED WITHIN THE CONSTRUCTION STRIP ARE NOT TO BE REMOVED OR DAMAGED BY THE CONTRACTOR.



Waste Water Disposal - Patapsco	Water and Sewer Code (County Use)
Type of Building - SF	Sewer No.
No. of SUC - 25	Water No.
No. of WLC - 9	

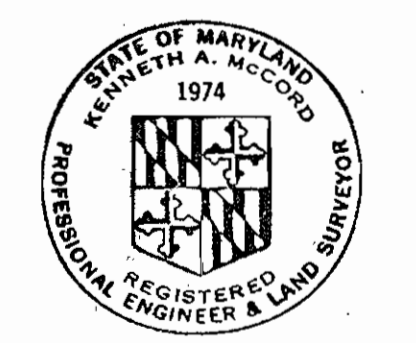
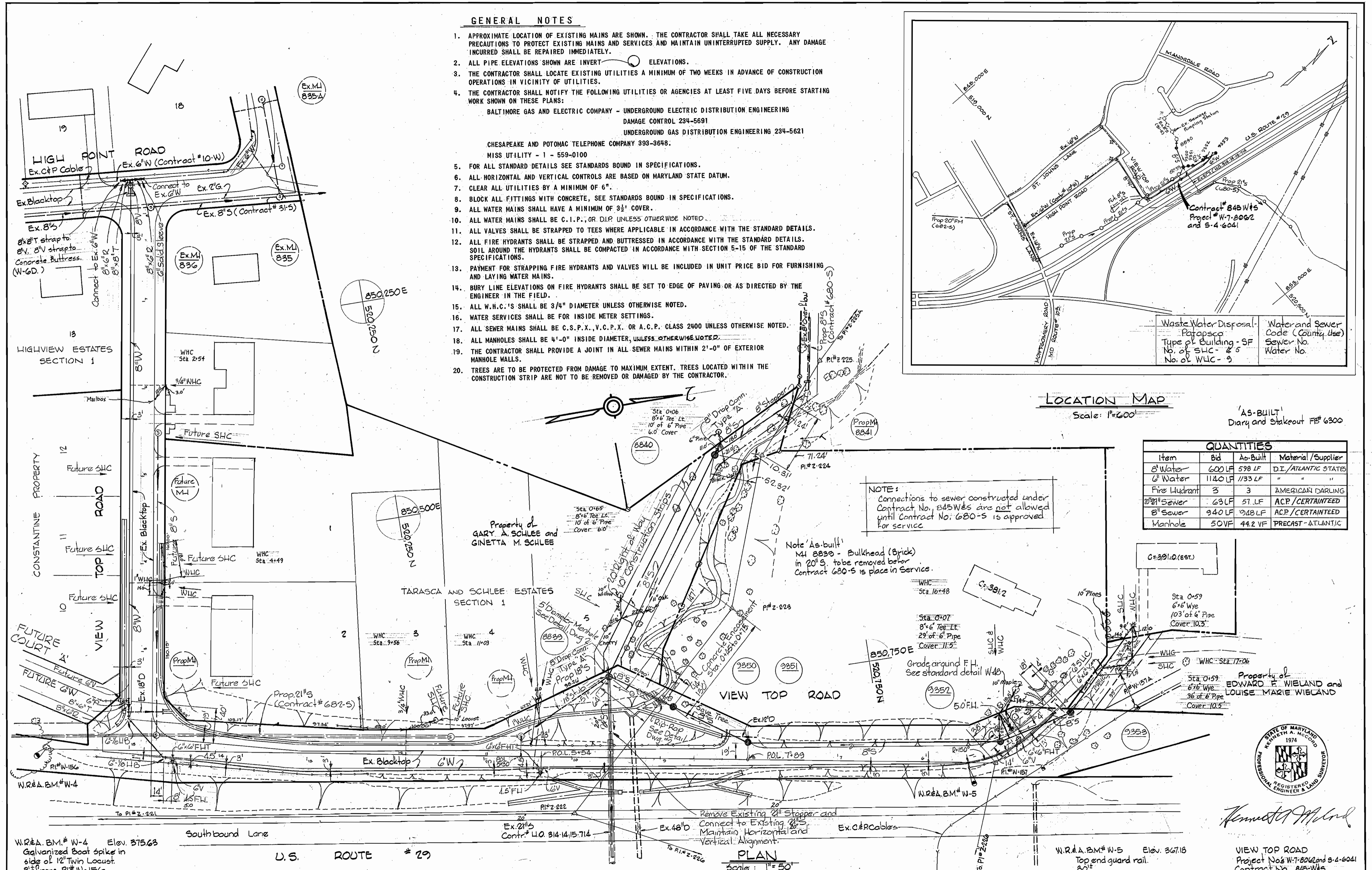
LOCATION MAP
Scale: 1"=600'

'AS-BUILT' Diary and Stakeout FB# 6300

Item	Bid	As-Built	Material/Supplier
8" Water	600 LF	598 LF	D.I./ATLANTIC STATES
6" Water	1140 LF	1133 LF	" " " "
Fire Hydrant	3	3	AMERICAN DARLING
20" Sewer	63 LF	57 LF	ACP/CERTANTEED
8" Sewer	940 LF	948 LF	ACP/CERTANTEED
Manhole	50 VF	44.2 VF	PRECAST-ATLANTIC

NOTE: Connections to sewer constructed under Contract No. 845W8S are not allowed until Contract No. 680-S is approved for service.

Note 'As-built' M4 8830 - Bulkhead (Brick) in 20' S. to be removed before Contract 680-S is placed in service.



Kenneth A. Molod

VIEW TOP ROAD
Project No. W-7-8062 and S-4-6041
Contract No. 845-W8S

WHITMAN, REQUARDT & ASSOCIATES
ENGINEERS
1304 ST. PAUL ST.
BALTIMORE, MARYLAND

DEPARTMENT OF PUBLIC WORKS
HOWARD COUNTY, MARYLAND
Director of Public Works - DATE
Chief-Bureau of Engineering - DATE

CONTRACT NO. 845W8S
PROJECT NO. W-7-8062
S-4-6041

PLAN OF
WATER AND SEWER MAINS

ELECTION DISTRICT
ELLICOTT CITY NO. 2

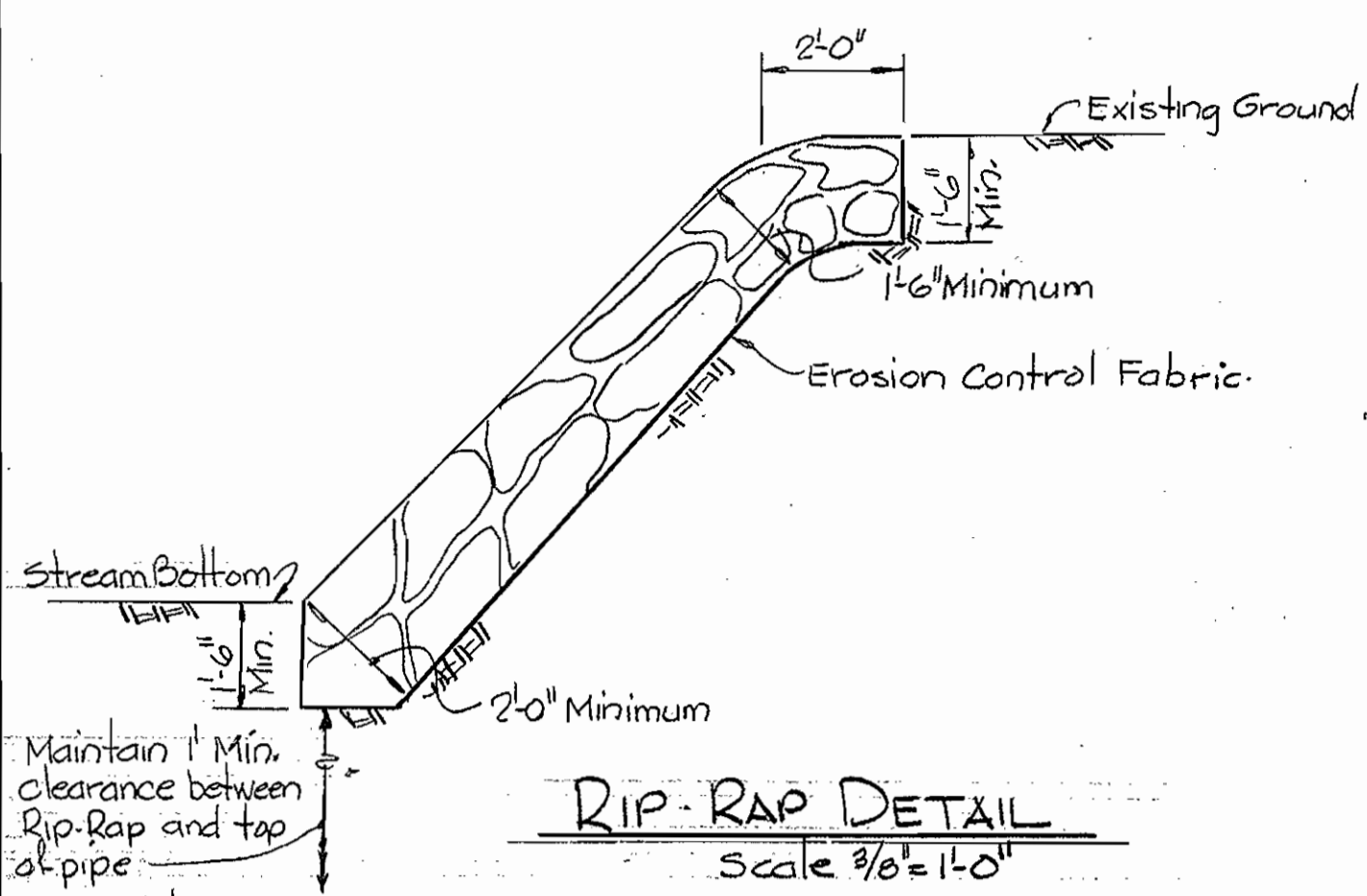
DRAWING NO. 1 OF 2	SCALE AS SHOWN
520-2	519-2

W.O. 3539

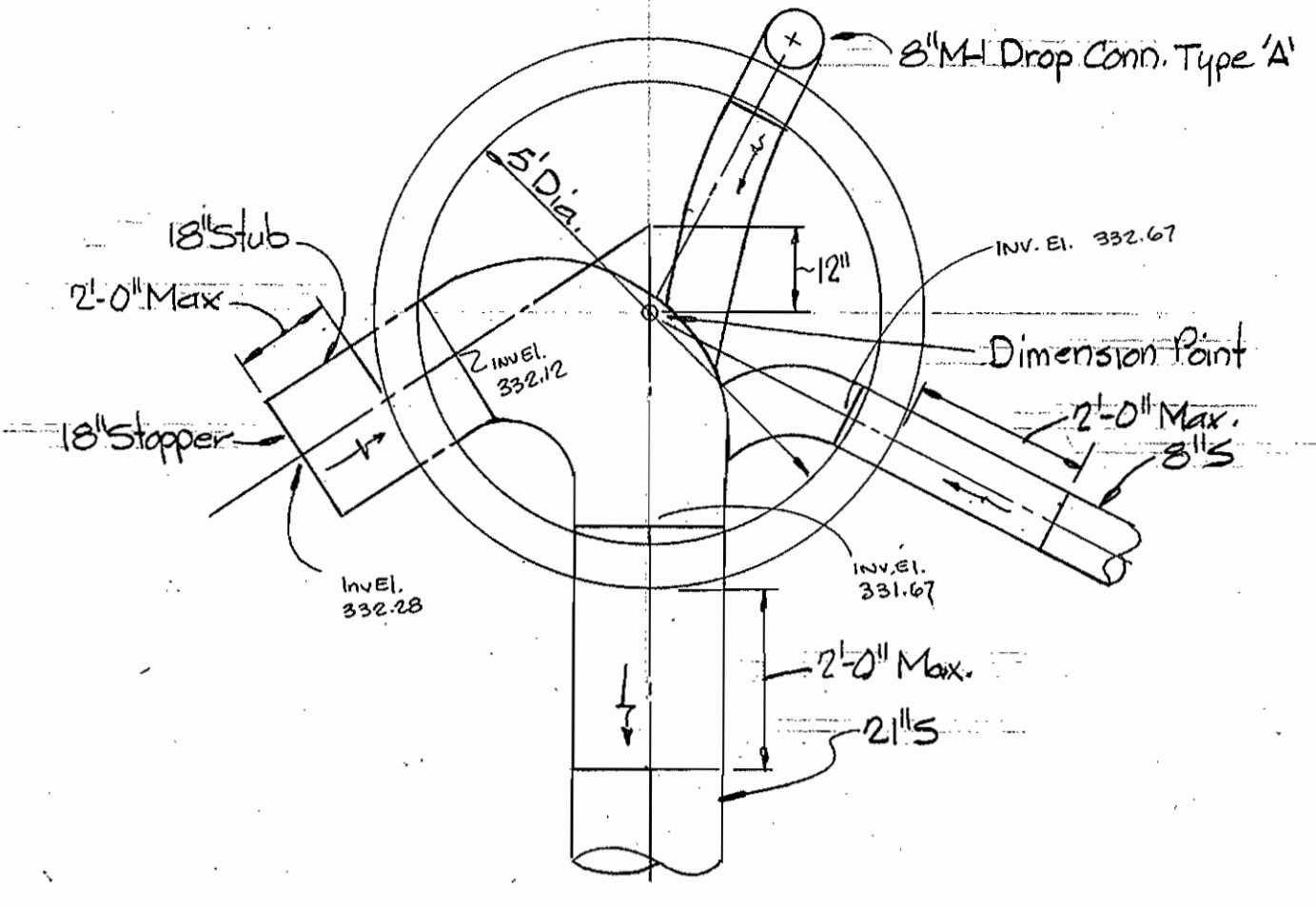
FB# 5343, 5472, 5481, 5787

Jan. 9, 1980
As-Built: May 8, 1980

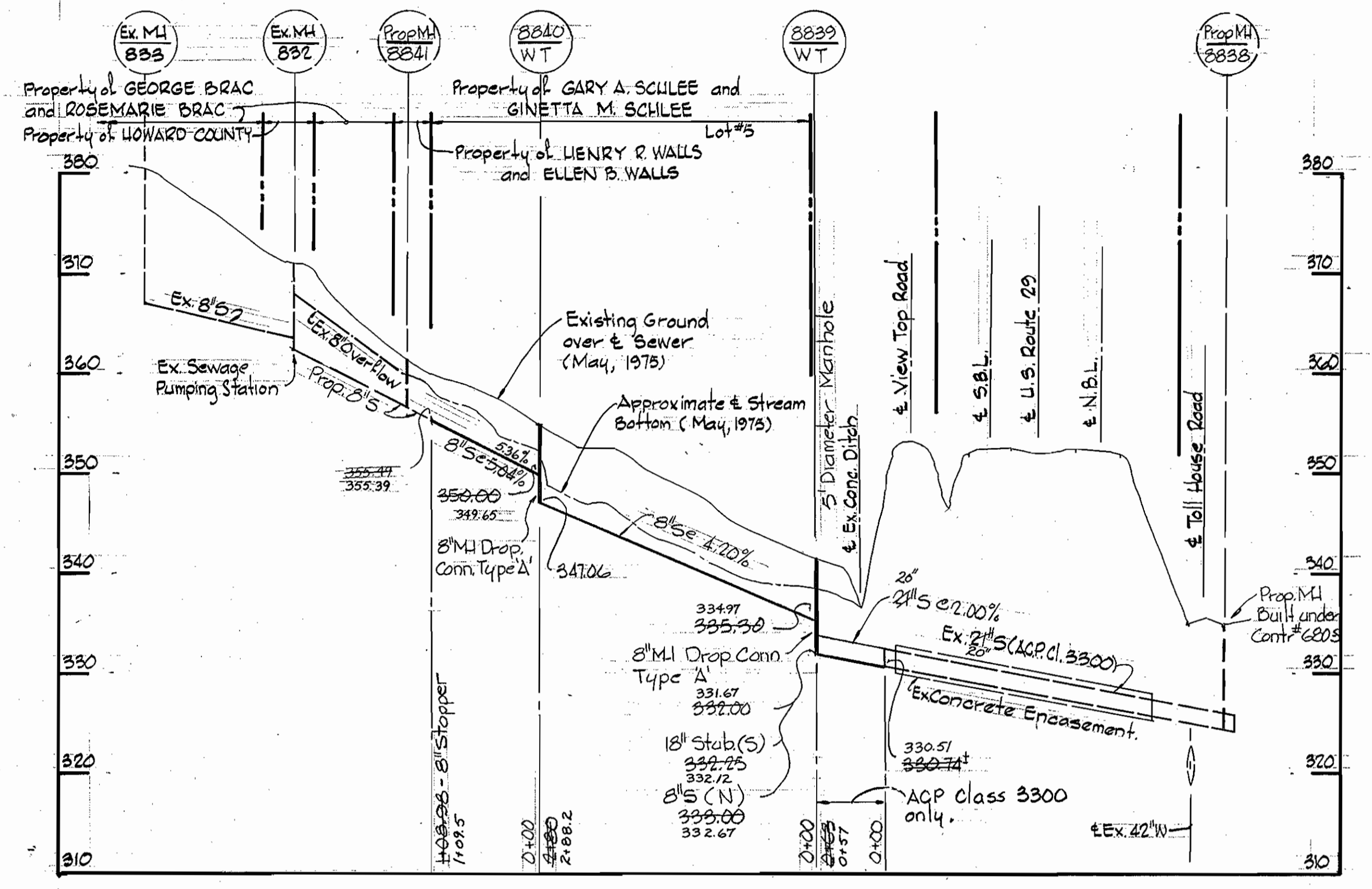
NS 845-W8/1



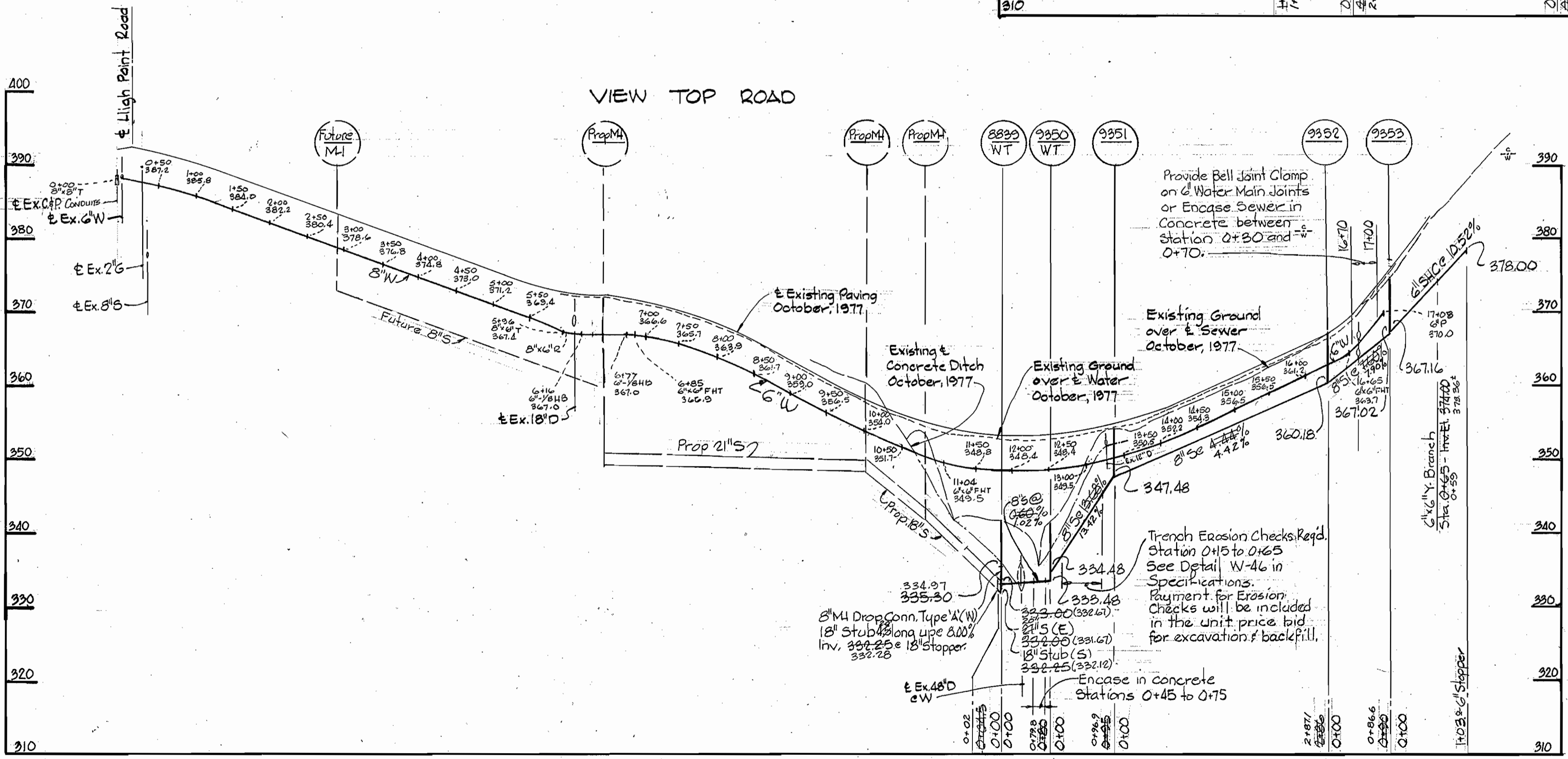
- Notes:
1. Cost of Rip-Rap shall be included in unit price bid for Furnishing and Laying of Sewer Mains.
 2. Rip-Rap shall be placed 6" minimum each side of sewer as shown.
 3. Erosion Control Fabric shall be Poly Filter-X as manufactured by Carthage Mills, Inc., Erosion Control Division, 124 W 66th Street, Cincinnati, Ohio; Laurel Erosion Control Cloth as manufactured by Laurel Plastics, Inc., Madison, Maine, or approved equal.
 4. Rip-Rap shall consist of dense rocks of random shapes and sizes, resistant to the action of air and water and suitable for bank protection. All rocks shall weigh a minimum of 150 pounds.



PLAN - MANHOLE NO. 8839
Scale 1/2" = 1'-0"

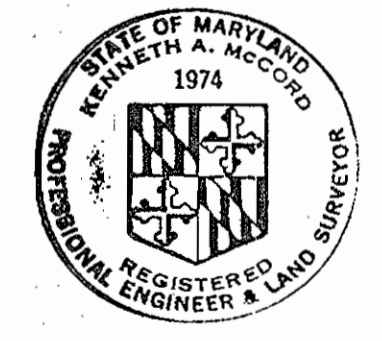


Note: Manhole designated W.T. in Plan and Profile shall have Watertight Frame and Cover.



PROFILES
Scale: Horizontal: 1" = 100'
Vertical: 1" = 10'

Note: Bell Joint Clamps shall be Dresser Style 160 or approved equal.



Kenneth A. McLeod

VIEW TOP ROAD
Project No. W-7-8062 S-4-6041
Contract No. 845-W85

WHITMAN, REQUARDT & ASSOCIATES
ENGINEERS
1304 ST. PAUL ST.
BALTIMORE, MARYLAND

DEPARTMENT OF PUBLIC WORKS
HOWARD COUNTY, MARYLAND
Director: *W. F. Neumy* 3-23-79
Chief-Bureau of Engineering: *W. O. Labort* 3-22-79

CONTRACT NO. 845-W85
PROJECT NO. W-7-8062
S-4-6041

PROFILES AND DETAILS OF
WATER AND SEWER MAINS

ELECTION DISTRICT
ELICOTT CITY NO. 2

DRAWING NO. 2 OF 2
SCALE AS SHOWN

WS 845-W85/2