

**CONTRACT NO. 2844D-W & S**  
**BURLEIGH MANOR**  
**HOWARD COUNTY, MARYLAND**  
**DEPARTMENT OF PUBLIC WORKS**

QUANTITIES			
ITEM	BID	AS-BUILT	MATERIAL / SUPPLIER
8" Sewer	3,670 L.F.	3,604 L.F.	Johns-Manville d. 2400
Manholes	177 V.F.	169.3 V.F.	Precast Concrete
8" Water	1,130 L.F.	1117 L.F.	Griffin D.I.P.
6" Water	1,060 L.F.	1063 L.F.	"
Fire Hydrants	4	4	American Darling

WHITMAN, REQUARDT & ASSOCIATES  
 ENGINEERS  
 1304 ST. PAUL ST.  
 BALTIMORE, MARYLAND

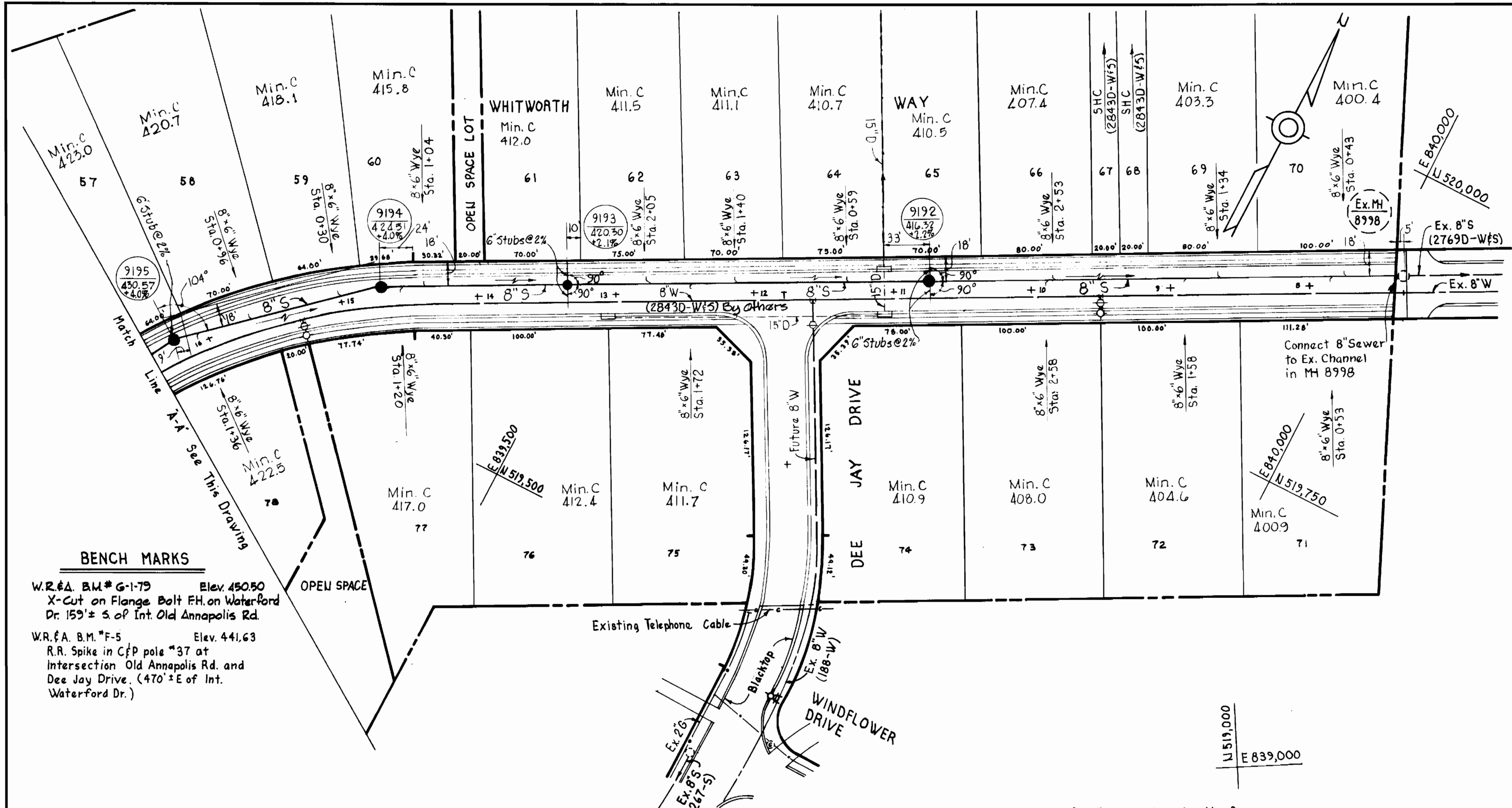
DEPARTMENT OF PUBLIC WORKS  
 HOWARD COUNTY, MARYLAND  
*Director of Public Works* 3/30/79  
*Chief-Bureau of Engineering* 3-30-79

CONTRACT NO. 2844D-W&S

LOCATION MAP OF  
 WATER & SEWER MAINS

BURLEIGH MANOR  
 ELECTION DISTRICT  
 ELLICOTT CITY NO. 2

Burleigh Manor  
 Section 1, Area 2  
 Contract No. 2844D-W&S  
 DRAWING NO. 1 OF 4  
 SCALE 1" = 600'



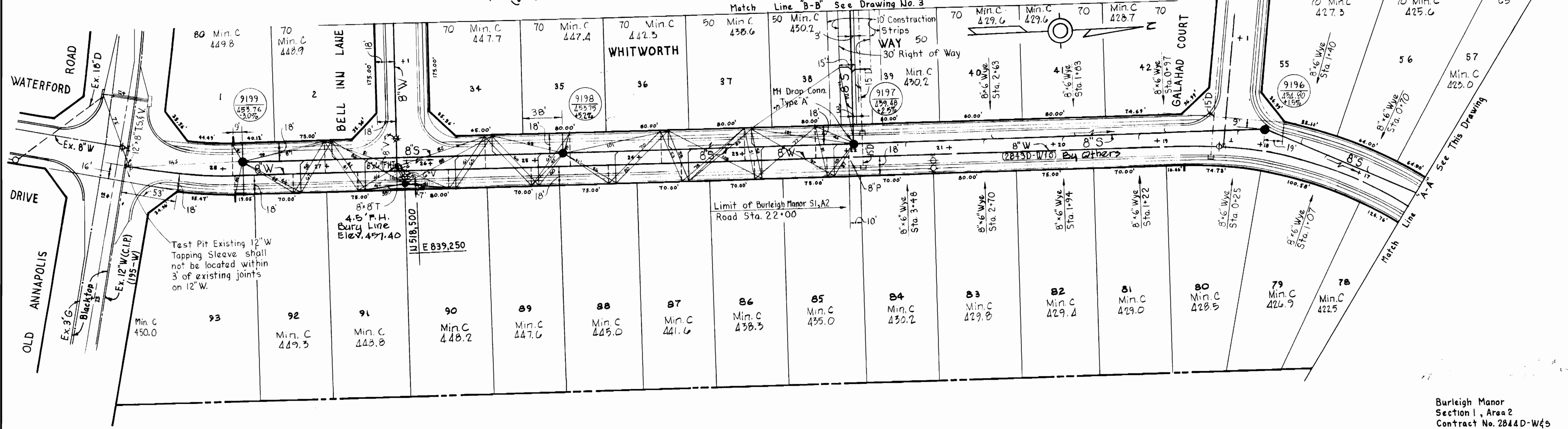
**GENERAL NOTES**

- APPROXIMATE LOCATION OF EXISTING MAINS ARE SHOWN. THE CONTRACTOR SHALL TAKE ALL NECESSARY PRECAUTIONS TO PROTECT EXISTING MAINS AND SERVICES AND MAINTAIN UNINTERRUPTED SUPPLY. ANY DAMAGE INCURRED SHALL BE REPAIRED IMMEDIATELY.
- ALL PIPE ELEVATIONS SHOWN ARE INVERT ELEVATIONS.
- THE CONTRACTOR SHALL LOCATE EXISTING UTILITIES A MINIMUM OF TWO WEEKS IN ADVANCE OF CONSTRUCTION OPERATIONS IN VICINITY OF UTILITIES.
- THE CONTRACTOR SHALL NOTIFY THE FOLLOWING UTILITIES OR AGENCIES AT LEAST FIVE DAYS BEFORE STARTING WORK SHOWN ON THESE PLANS:  
BALTIMORE GAS AND ELECTRIC COMPANY - UNDERGROUND ELECTRIC DISTRIBUTION ENGINEERING DAMAGE CONTROL 234-5691 UNDERGROUND GAS DISTRIBUTION ENGINEERING 224-5621  
CHESAPEAKE AND POTOMAC TELEPHONE COMPANY 393-3648.  
MISS UTILITY - 1 - 559-0100
- FOR ALL STANDARD DETAILS SEE STANDARDS BOUND IN SPECIFICATIONS.
- ALL HORIZONTAL AND VERTICAL CONTROLS ARE BASED ON MARYLAND STATE DATUM.
- CLEAR ALL UTILITIES BY A MINIMUM OF 6".
- BLOCK ALL FITTINGS WITH CONCRETE, SEE STANDARDS BOUND IN SPECIFICATIONS.
- ALL WATER MAINS SHALL HAVE A MINIMUM OF 3/4" COVER.
- ALL WATER MAINS SHALL BE C.I.P., D.I.P. OR A.C.P. UNLESS OTHERWISE NOTED.
- ALL VALVES SHALL BE STRAPPED TO TEES WHERE APPLICABLE IN ACCORDANCE WITH THE STANDARD DETAILS.
- ALL FIRE HYDRANTS SHALL BE STRAPPED AND BUTTRESSED IN ACCORDANCE WITH THE STANDARD DETAILS. SOIL AROUND THE HYDRANTS SHALL BE COMPACTED IN ACCORDANCE WITH SECTION 5-15 OF THE STANDARD SPECIFICATIONS.
- PAYMENT FOR STRAPPING FIRE HYDRANTS AND VALVES WILL BE INCLUDED IN UNIT PRICE BID FOR FURNISHING AND LAYING WATER MAINS.
- BURY LINE ELEVATIONS ON FIRE HYDRANTS SHALL BE SET TO THE ELEVATION SHOWN ON THE DRAWINGS.
- ALL W.H.C.'S SHALL BE 3/4" DIAMETER UNLESS OTHERWISE NOTED.
- WATER SERVICES SHALL BE FOR INSIDE METER SETTINGS.
- ALL SEWER MAINS SHALL BE C.S.P.X., V.C.P.X. OR A.C.P. CLASS 2400 UNLESS OTHERWISE NOTED.
- ALL MANHOLES SHALL BE 4'-0" INSIDE DIAMETER.
- THE CONTRACTOR SHALL PROVIDE A JOINT IN ALL SEWER MAINS WITHIN 2'-0" OF EXTERIOR MANHOLE WALLS.
- MANHOLES SHOWN WITH 12" WALLS ARE FOR BRICK MANHOLES ONLY.
- TREES ARE TO BE PROTECTED FROM DAMAGE TO MAXIMUM EXTENT. TREES LOCATED WITHIN THE CONSTRUCTION STRIP ARE NOT TO BE REMOVED OR DAMAGED BY THE CONTRACTOR.

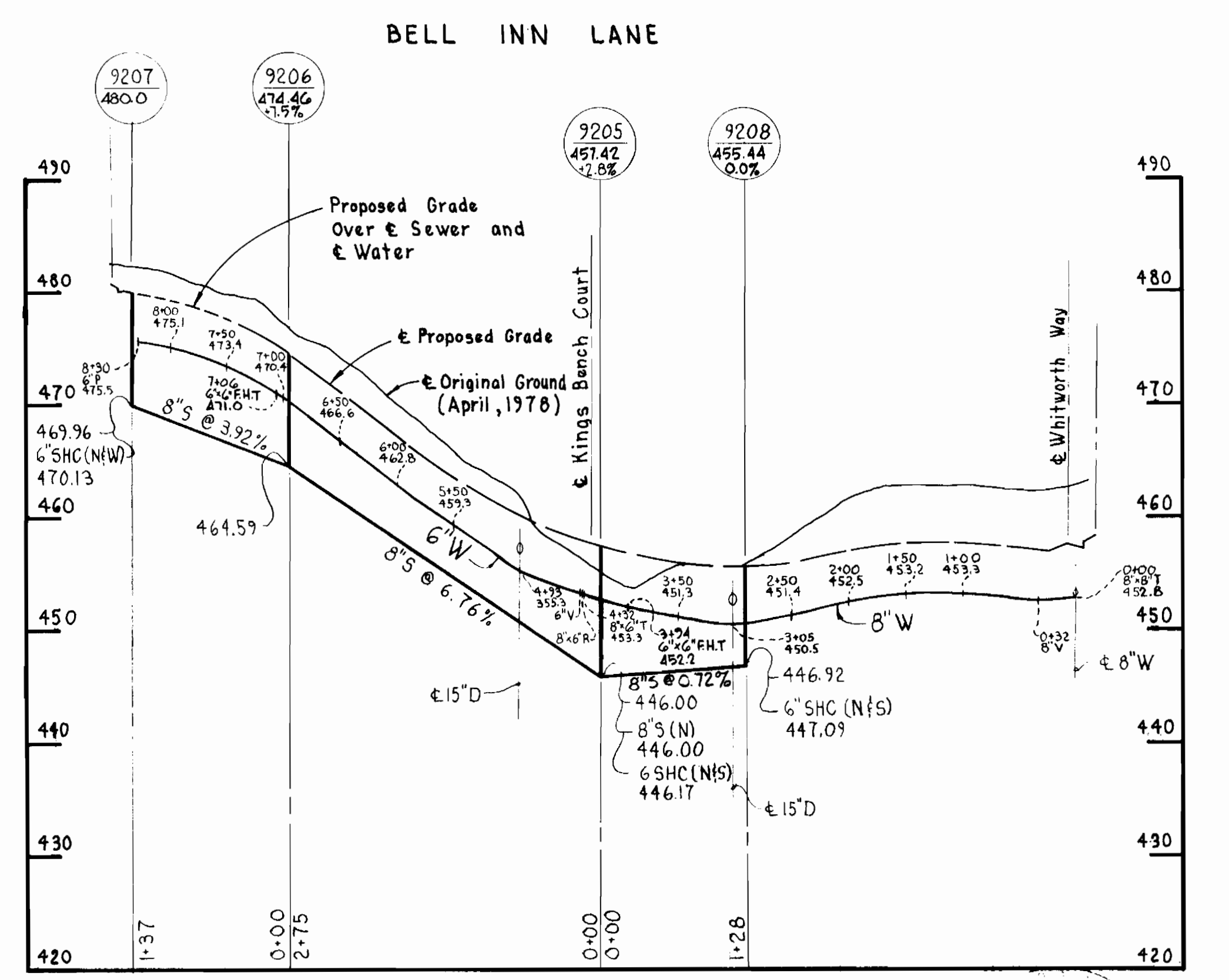
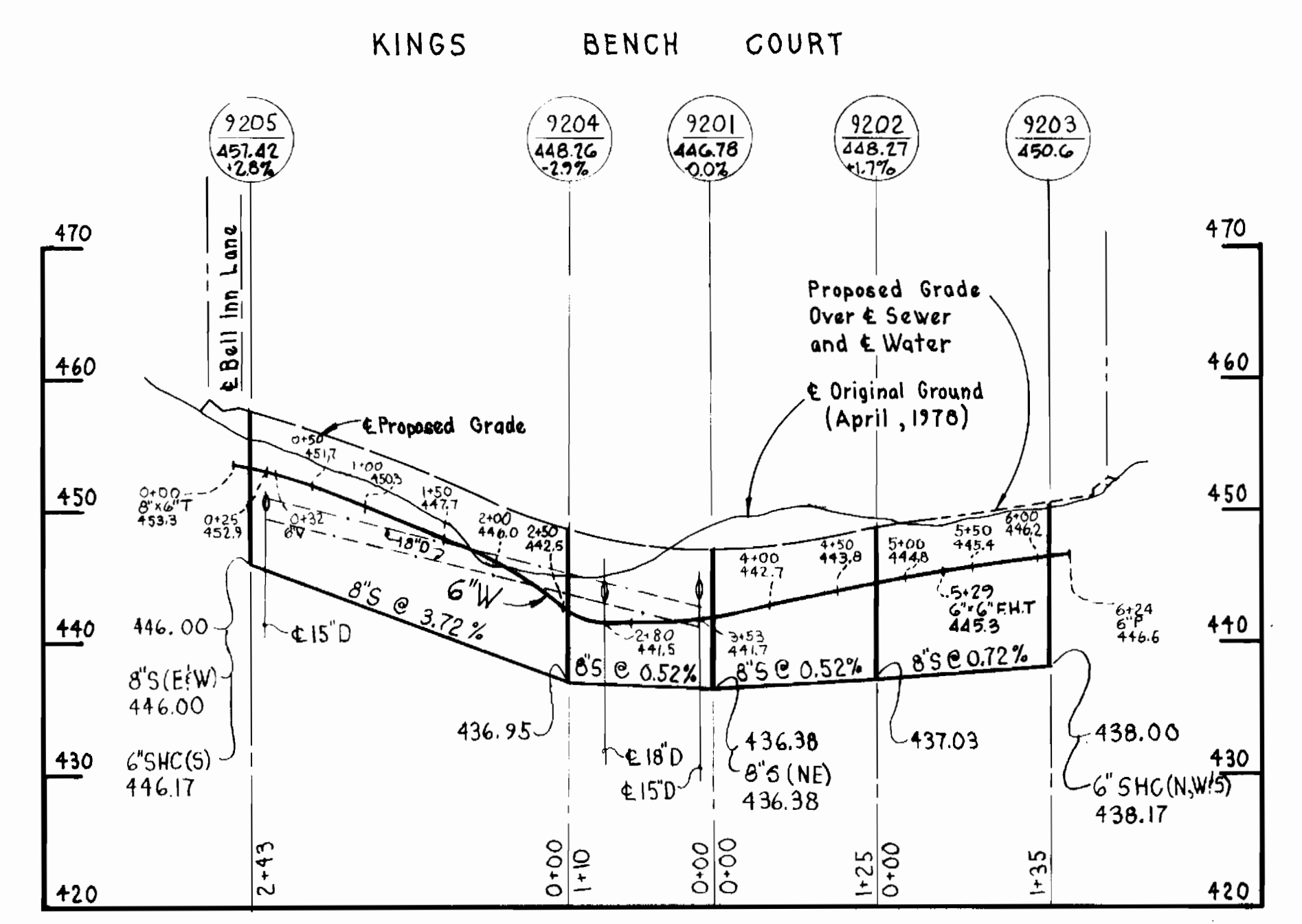
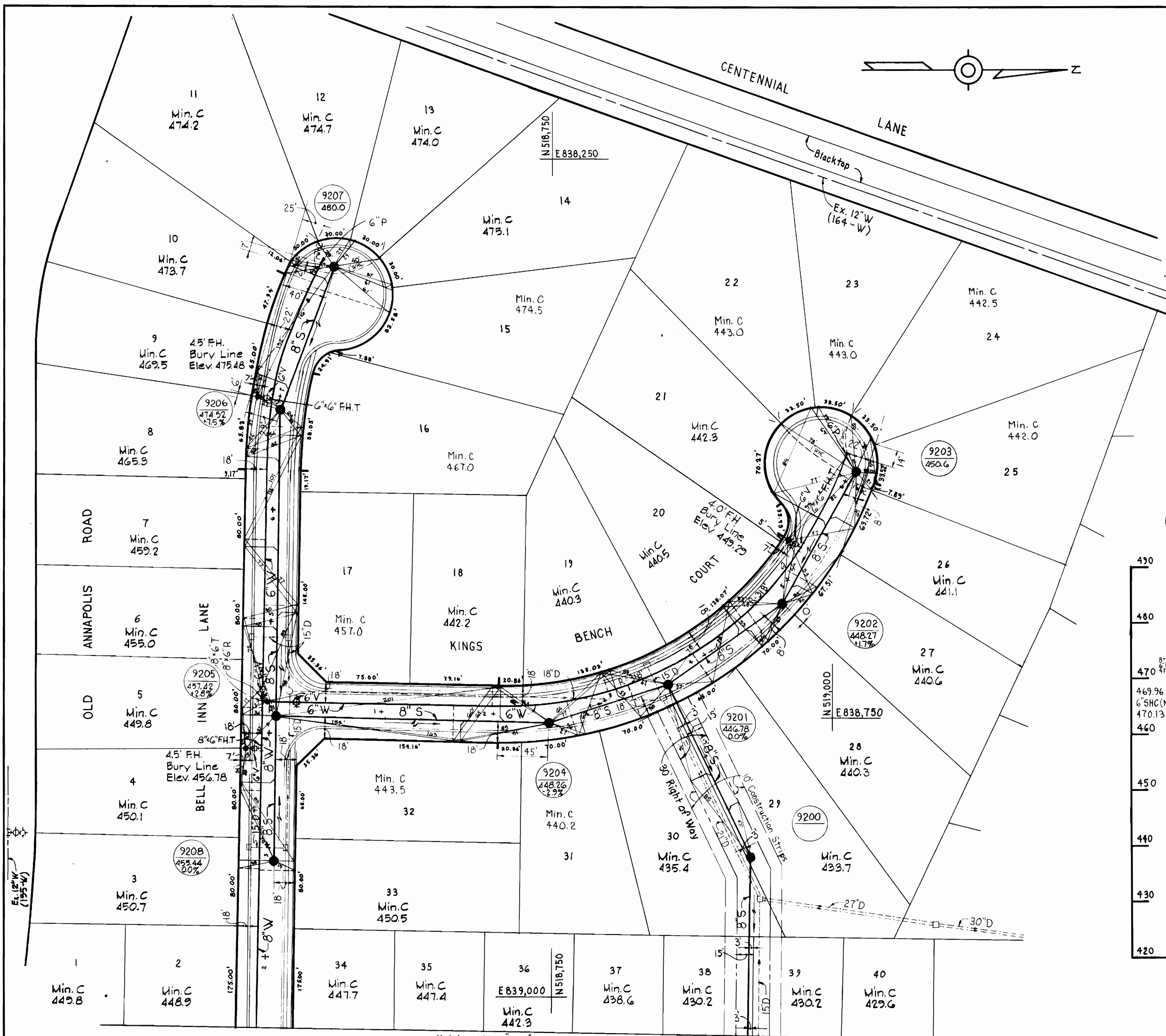
**BENCH MARKS**

W.R.#A. B.M.\*G-175 Elev. 450.50  
X-Cut on Flange Bolt FH on Waterford Dr. 159' ± S. of Int. Old Annapolis Rd.

W.R.#A. B.M.\*F-5 Elev. 441.63  
R.R. Spike in C/P pole #37 at Intersection Old Annapolis Rd. and Dee Jay Drive. (470' ± E of Int. Waterford Dr.)



<p><b>WHITMAN, REARDT &amp; ASSOCIATES</b> ENGINEERS 1304 ST. PAUL ST. BALTIMORE, MARYLAND</p>	<p><b>DEPARTMENT OF PUBLIC WORKS</b> HOWARD COUNTY, MARYLAND Director of Public Works DATE 3/20/79 W.O. Filled 3-30-79 CHIEF-BUREAU OF ENGINEERING - DATE</p>	<p><b>CONTRACT NO. 2844D-WBS</b></p>	<p><b>PLAN OF</b> WATER &amp; SEWER MAINS</p>	<p><b>BURLEIGH MANOR</b> ELECTION DISTRICT ELICOTT CITY NO. 2</p>	<p><b>DRAWING</b> NO. 2 OF 4</p> <p><b>SCALE</b> 1" = 50'</p>
--	---	--------------------------------------	---	---	---



**PROFILES**  
 Scale: Horizontal = 1"=100'  
 Vertical = 1"=10'

Relocate F.H. See Drawing No. 4 Lump Sum Item No. A-G

Match Line "B-B" See Drawing No. 2

**PLAN**  
 Scale 1"=50'

**WHITMAN, REQUARDT & ASSOCIATES**  
 ENGINEERS  
 1304 ST. PAUL ST.  
 BALTIMORE, MARYLAND

**DEPARTMENT OF PUBLIC WORKS**  
 HOWARD COUNTY, MARYLAND  
 Director of Public Works: *W. O. F. Albert* 3/30/79  
 Chief Bureau of Engineering: *W. O. F. Albert* 3-30-79

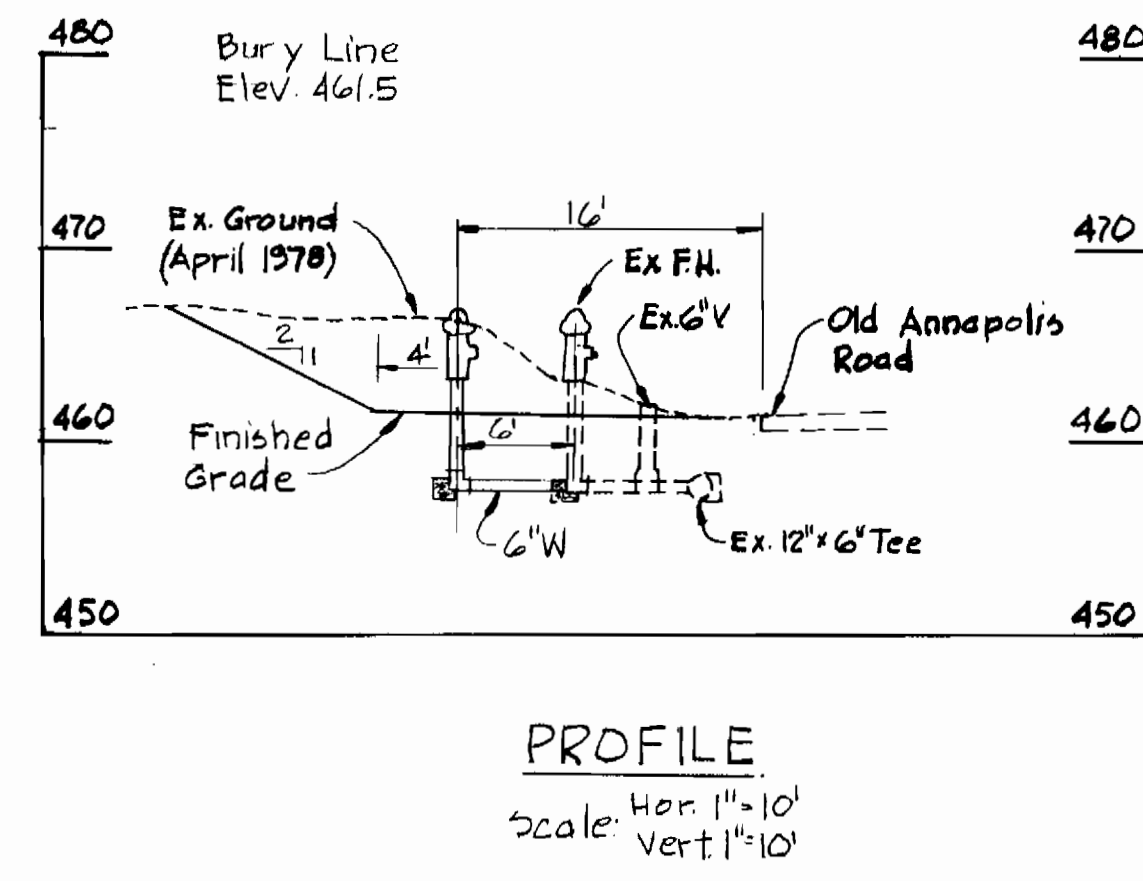
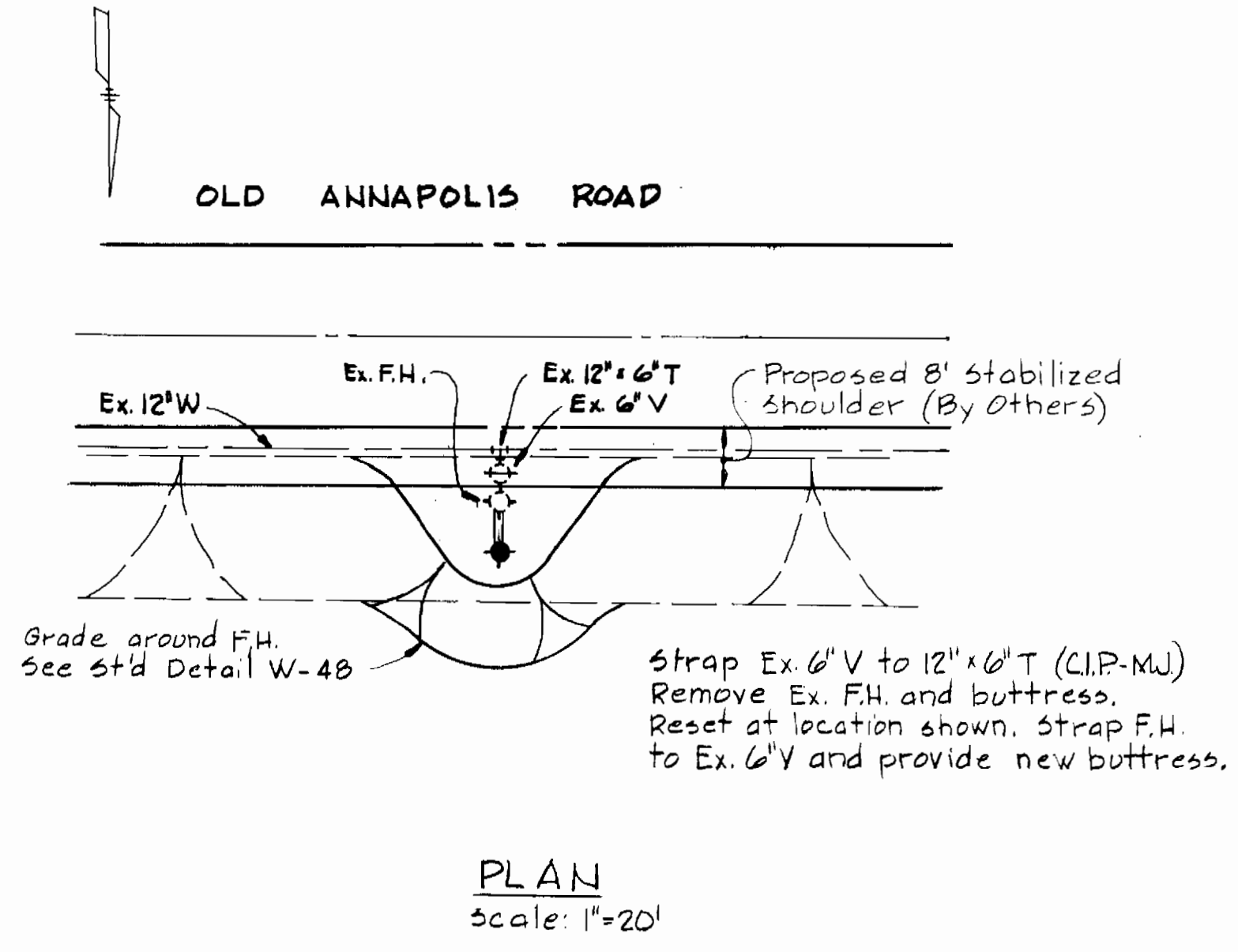
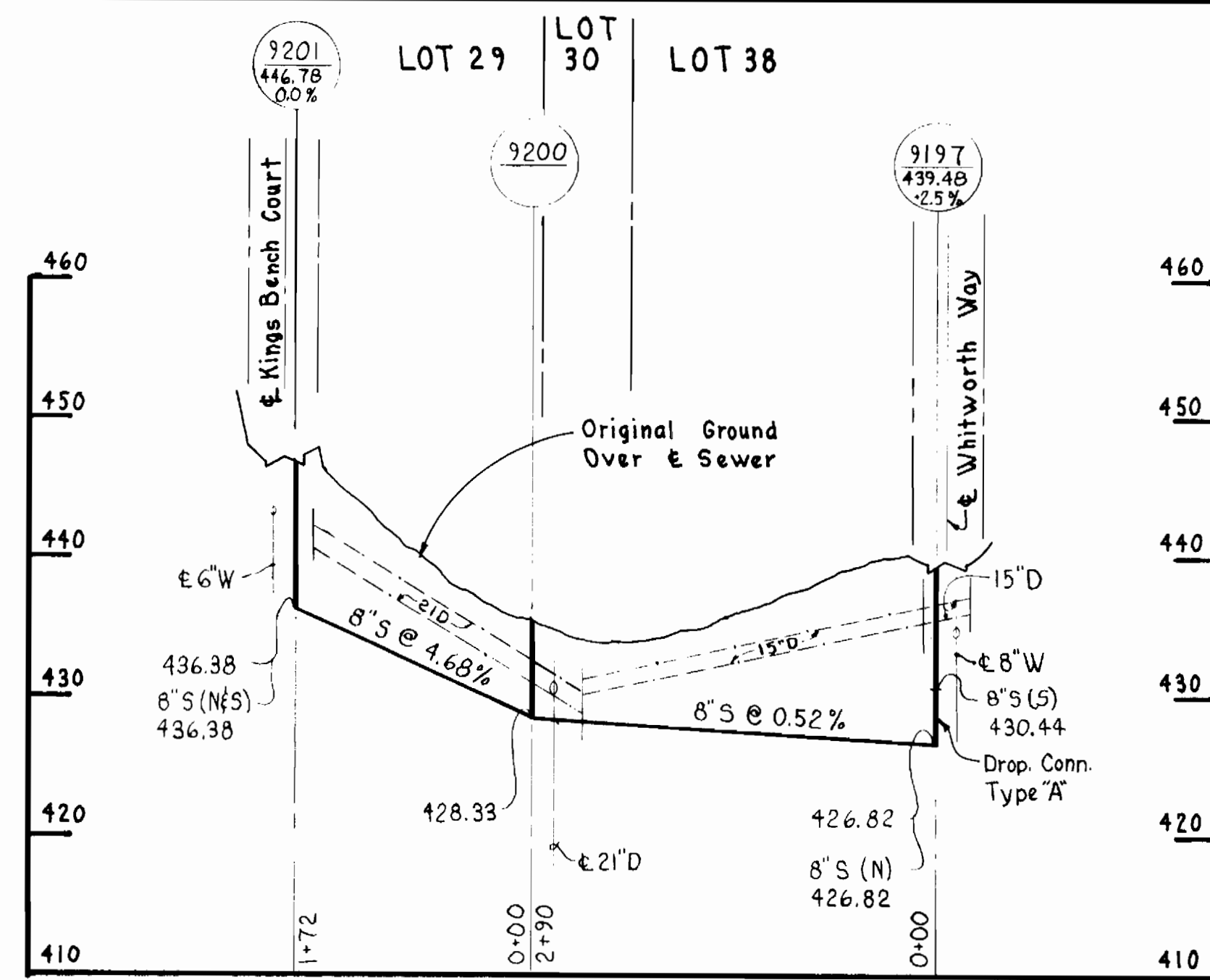
CONTRACT NO. **844D-WAS**

PLAN AND PROFILES OF WATER AND SEWER MAINS

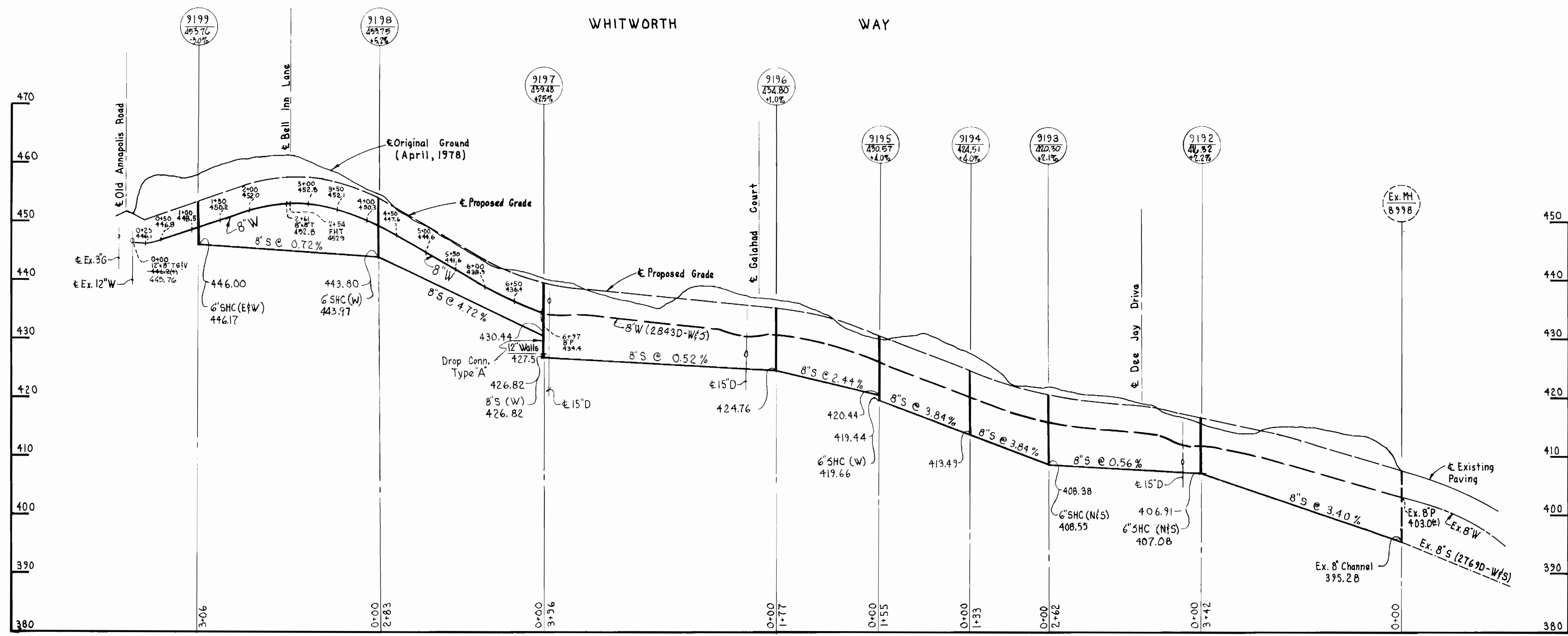
NO.	DATE	REVISION
1	4-17-1979	Ex. Fire Hydrant Relocation Added

Burleigh Manor  
 Section 1, Area 2  
 Contract No. 2644D-W&S

**DRAWING NO. 3 OF 4**  
**SCALE AS SHOWN**



FIRE HYDRANT RELOCATION  
Lump Sum Item No. A-6



*Handwritten signature and initials*

Δ	4-17-1979	Fire Hydrant Relocation Added
No.	DATE	REVISION

Burleigh Manor  
Section 1, Area 2  
Contract No. 28444-W45

WHITMAN, REQUARDT & ASSOCIATES ENGINEERS 1304 ST. PAUL ST. BALTIMORE, MARYLAND	DEPARTMENT OF PUBLIC WORKS HOWARD COUNTY, MARYLAND <i>W. O. Silbert</i> 3-30-79 CHIEF-BUREAU OF ENGINEERING - DATE	CONTRACT NO. 28444-W45	PROFILES OF WATER & SEWER MAINS	BURLEIGH MANOR ELECTION DISTRICT ELLICOTT CITY NO. 2	DRAWING NO. 4	SCALE H: 1"=100' V: 1"=10'
					OF 4	OF 4