

GENERAL NOTES

1. Approximate location of existing mains are shown. The Contractor shall take all necessary precautions to protect existing mains and services and maintain uninterrupted supply. Any damage incurred shall be repaired immediately.
2. All pipe elevations shown are invert elevations.
3. The Contractor shall locate existing utilities a minimum of two weeks in advance of construction operations in vicinity of utilities.
4. The Contractor shall notify the following utilities or agencies at least five days before starting work shown on these plans:
 - Baltimore Gas and Electric Company - Underground Electric Distribution Engineering
 - Damage Control 234-5691
 - Underground Gas Distribution Engineering 234-5621
 - Chesapeake and Potomac Telephone Company 393-3648
 - Miss Utility 1-550-0100
5. For all standard details see standards bound in Specifications.
6. All horizontal and vertical controls are based on Maryland State Datum.
7. Clear all utilities by a minimum of 6".
8. Block all fittings with concrete, see standards bound in Specifications.
9. All water mains shall have a minimum of 36" cover.
10. All water mains shall be C.I.P., or D.I.P., unless otherwise noted.
11. All valves shall be strapped to tees where applicable in accordance with the standard details.
12. All fire hydrants shall be strapped and buttressed in accordance with the standard details. Soil around the hydrants shall be compacted in accordance with Section 5-15 of the standard Specifications.
13. Payment for strapping fire hydrants and valves will be included in unit price bid for furnishing and laying water mains.
14. Bury Line elevations on fire hydrants shall be set to the elevation shown on the drawings.
15. All W.H.C.'s shall be 3/4" diameter unless otherwise noted.
16. Water services shall be for inside meter settings.
17. All sewer mains shall be C.S.P.X., V.C.P.X. or A.C.P. Class 2400 unless otherwise noted.
18. All manholes shall be 4'-0" inside diameter.
19. The Contractor shall provide a joint in all sewer mains within 2'-0" of exterior manhole walls.
20. Manholes shown with 12" Walls are for brick manholes only.

BENCH MARKS

W.R.E.A. B.M.*W-1 Elev. 370.78
Top Flange Bolt Fire Hydrant,
Intersection Font Hill Drive
and Windflower Drive.

W.R.E.A. B.M.*W-2 Elev. 378.43
Galvanized Boat Spike in
root 36" Tree 75' (±) N.E. from
Font Hill Drive sta. 36+25.

QUANTITIES

ITEM	BID	AS-BUILT	MATERIAL/SUPPLIER
8" Sewer	2,220 L.F.	2,224 L.F.	J.M. Eng-Tite Tranecta
Manholes	100 V.F.	99.86 V.F.	ATLANTIC PRE-CAST 'A' lock
8" Water	2,270 L.F.	2,266 L.F.	Griffin D.I.P.
6" Water	490 L.F.	485 L.F.	Griffin D.I.P.
Fire Hydrants	3	3	American Darling
Valves	7	7	American Darling

Font Hill Village
Section 3, Area 4
Contract No. 284-OD-Wf5

WHITMAN, REQUARDT & ASSOCIATES
ENGINEERS
1304 ST. PAUL ST.
BALTIMORE, MARYLAND

DEPARTMENT OF PUBLIC WORKS
HOWARD COUNTY, MARYLAND
3/30/79
DIRECTOR OF PUBLIC WORKS - DATE

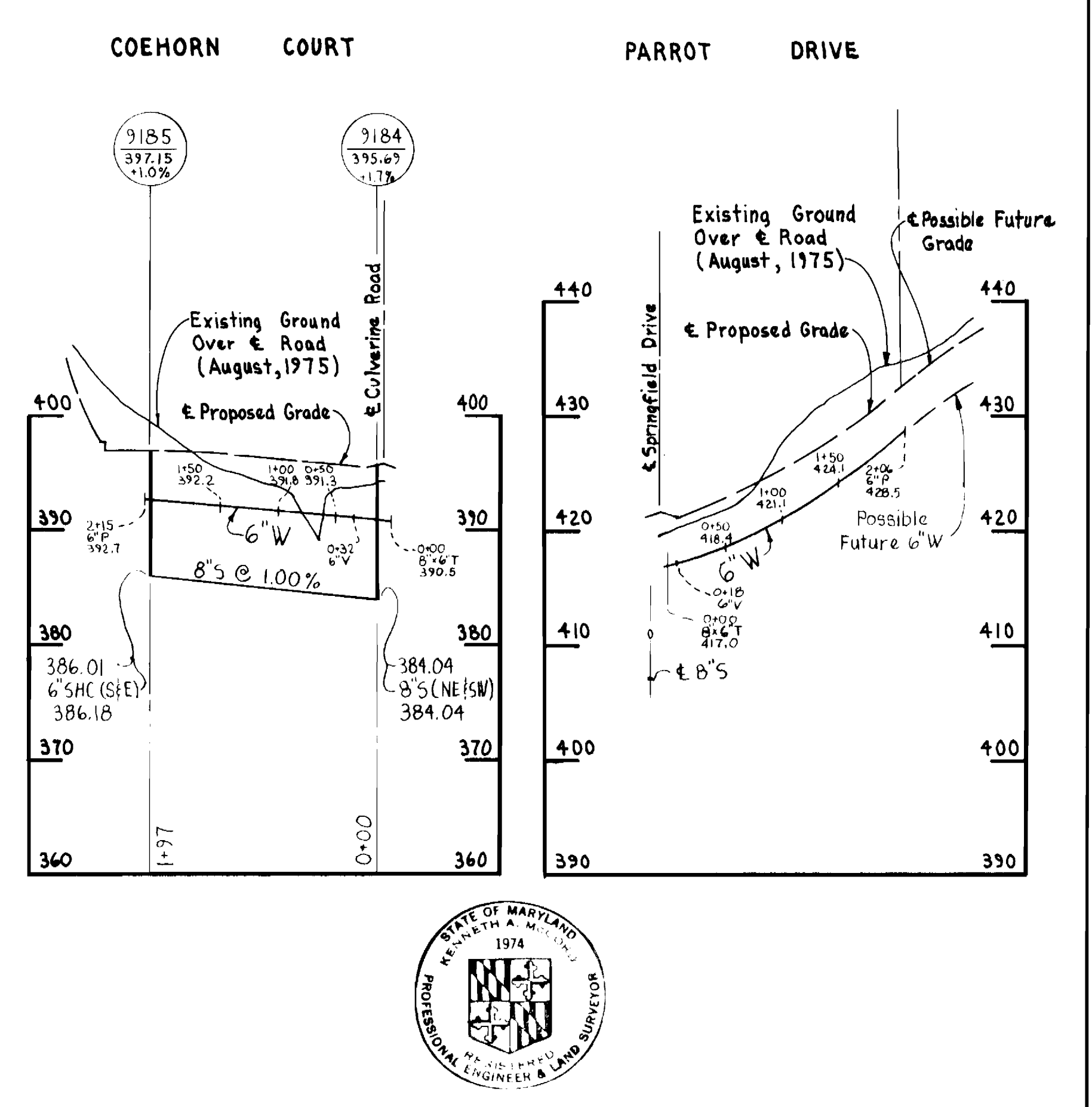
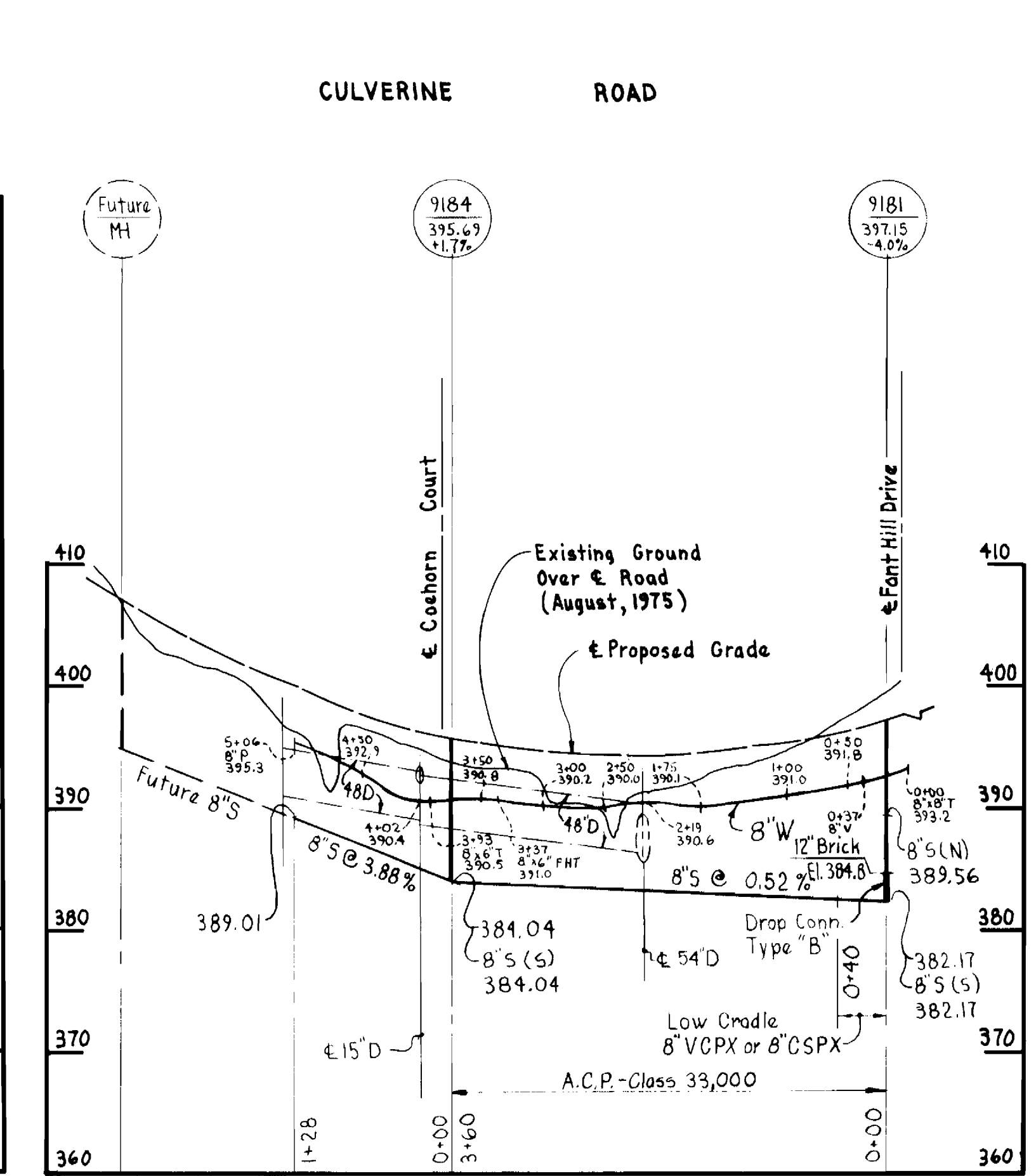
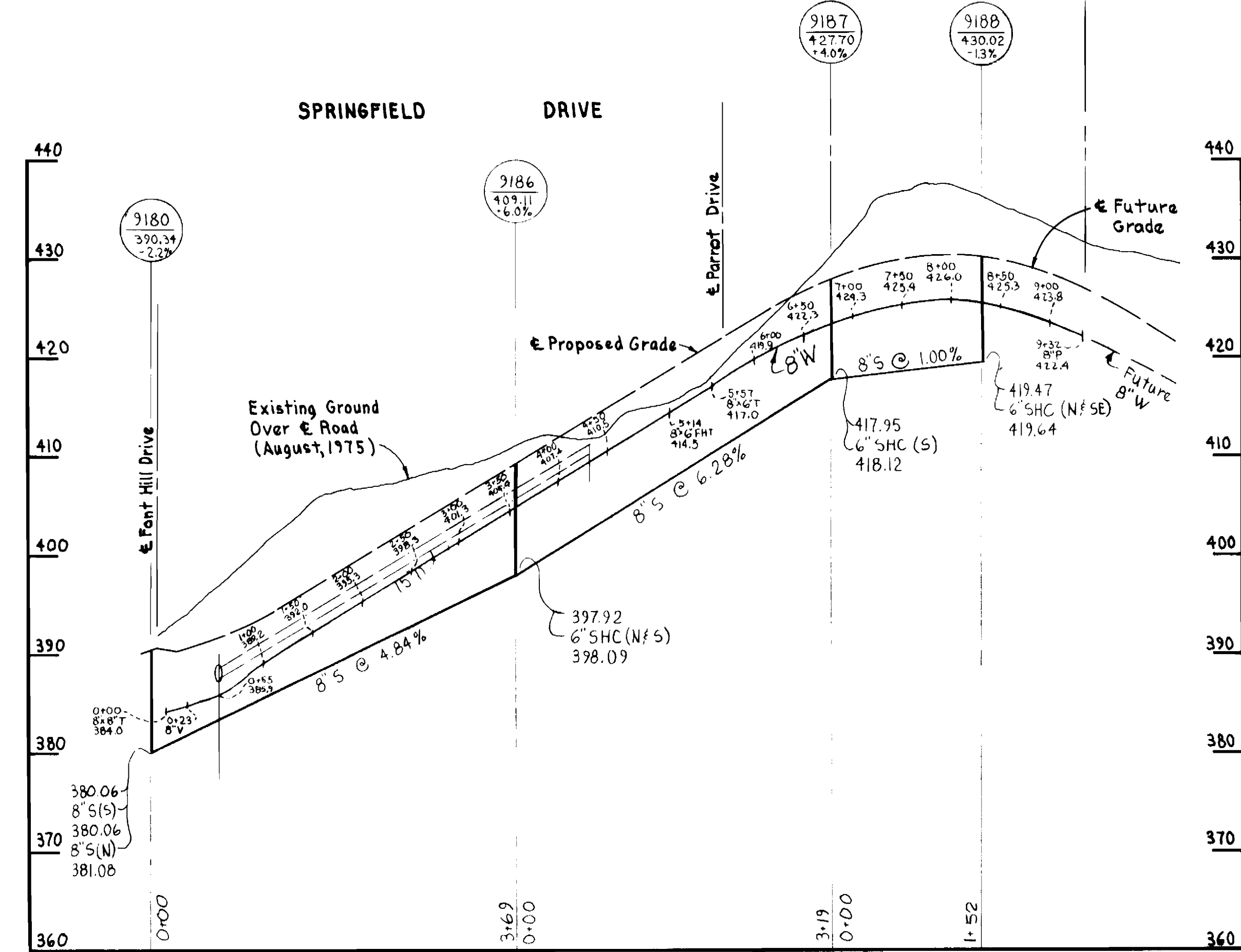
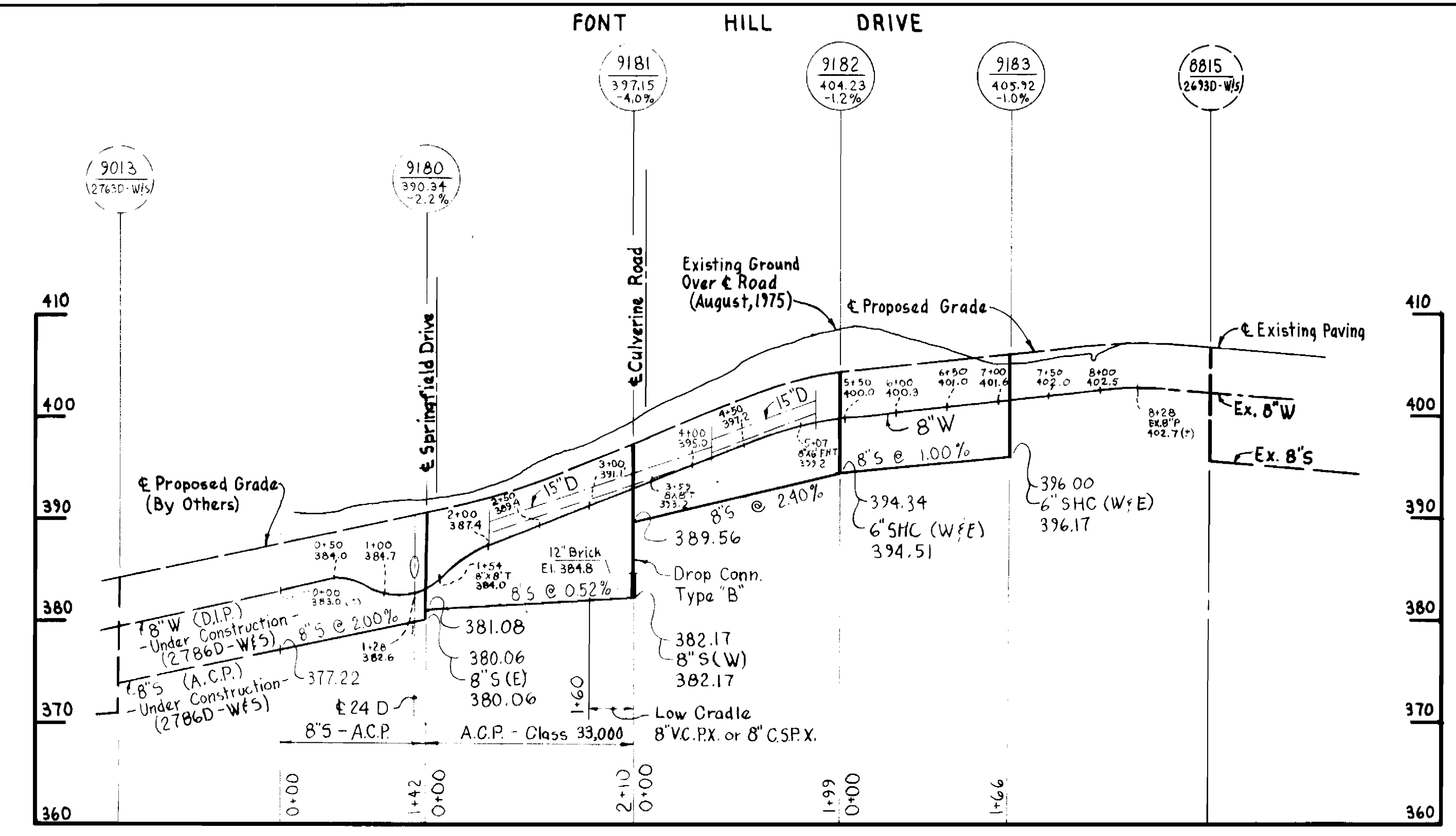
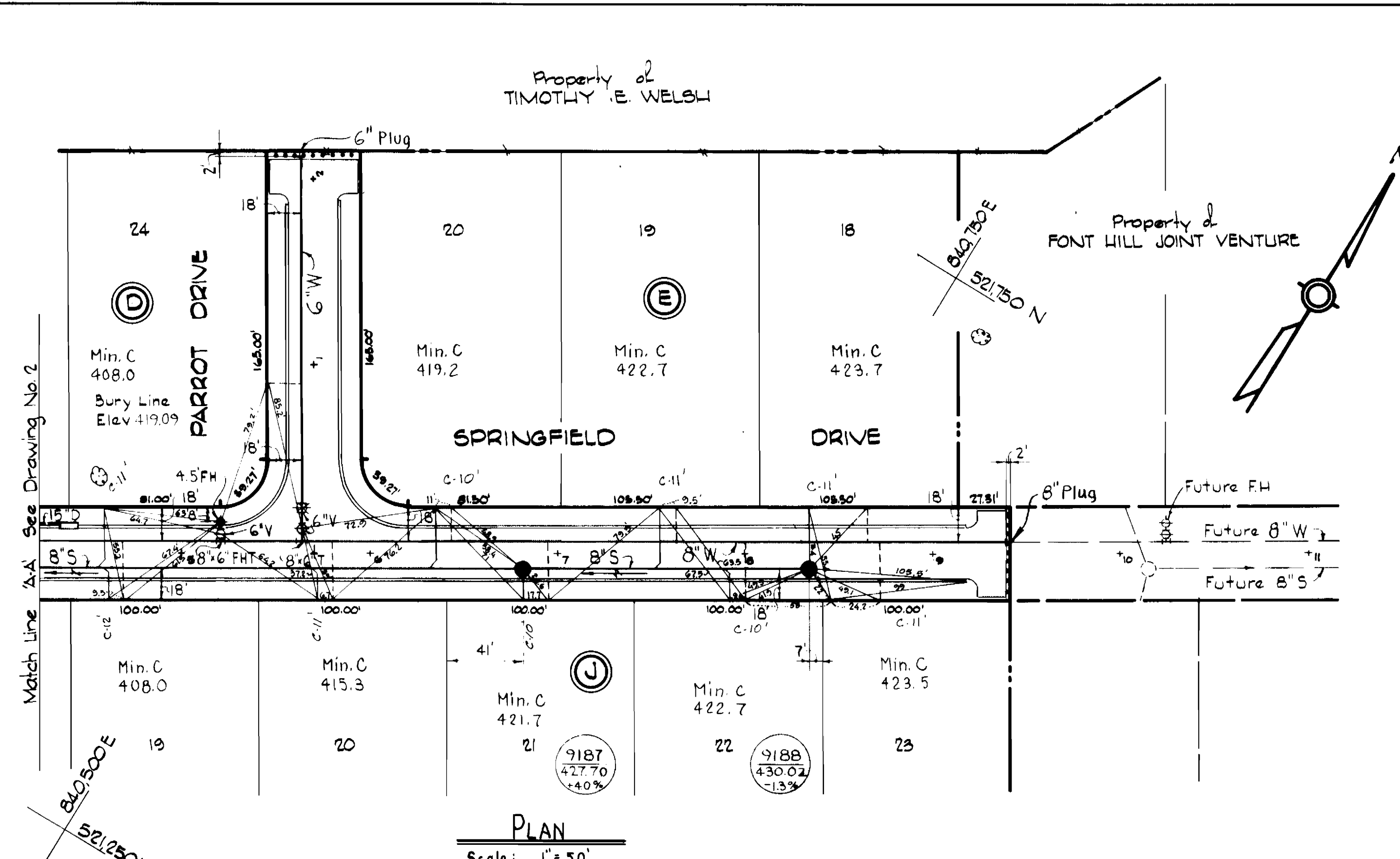
W.O. Libbert 3-30-79
CHIEF-BUREAU OF ENGINEERING - DATE

CONTRACT NO. 284-OD-Wf5

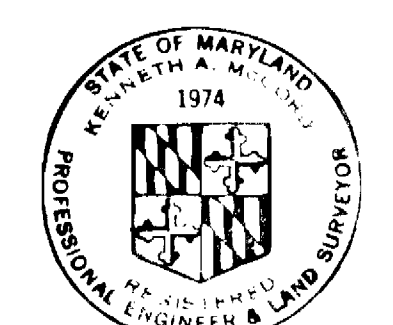
PLAN OF WATER AND SEWER MAINS

ELECTION DISTRICT ELLICOTT CITY NO. 2

DRAWING NO. 1 OF 2 SCALE AS SHOWN



PROFILES
 Scale: Horizontal = 1" = 100'
 Vertical = 1" = 10'



Kenneth A. McLeod

Font Hill Village
 Section 3, Area 4
 Contract No. 2840D-WFS

WHITMAN, REQUARDT & ASSOCIATES ENGINEERS 1304 ST. PAUL ST. BALTIMORE, MARYLAND	DEPARTMENT OF PUBLIC WORKS HOWARD COUNTY, MARYLAND Director: F. Nemoy 3/20/79 Chief-Bureau of Engineering: W.O. Likert 3-30-79	CONTRACT NO. 2840D-WFS	PLAN AND PROFILES OF WATER AND SEWER MAINS	ELECTION DISTRICT ELLICOTT CITY NO. 2	DRAWING NO. 2 OF 2 SCALE AS SHOWN
--	--	-------------------------------	---	--	--