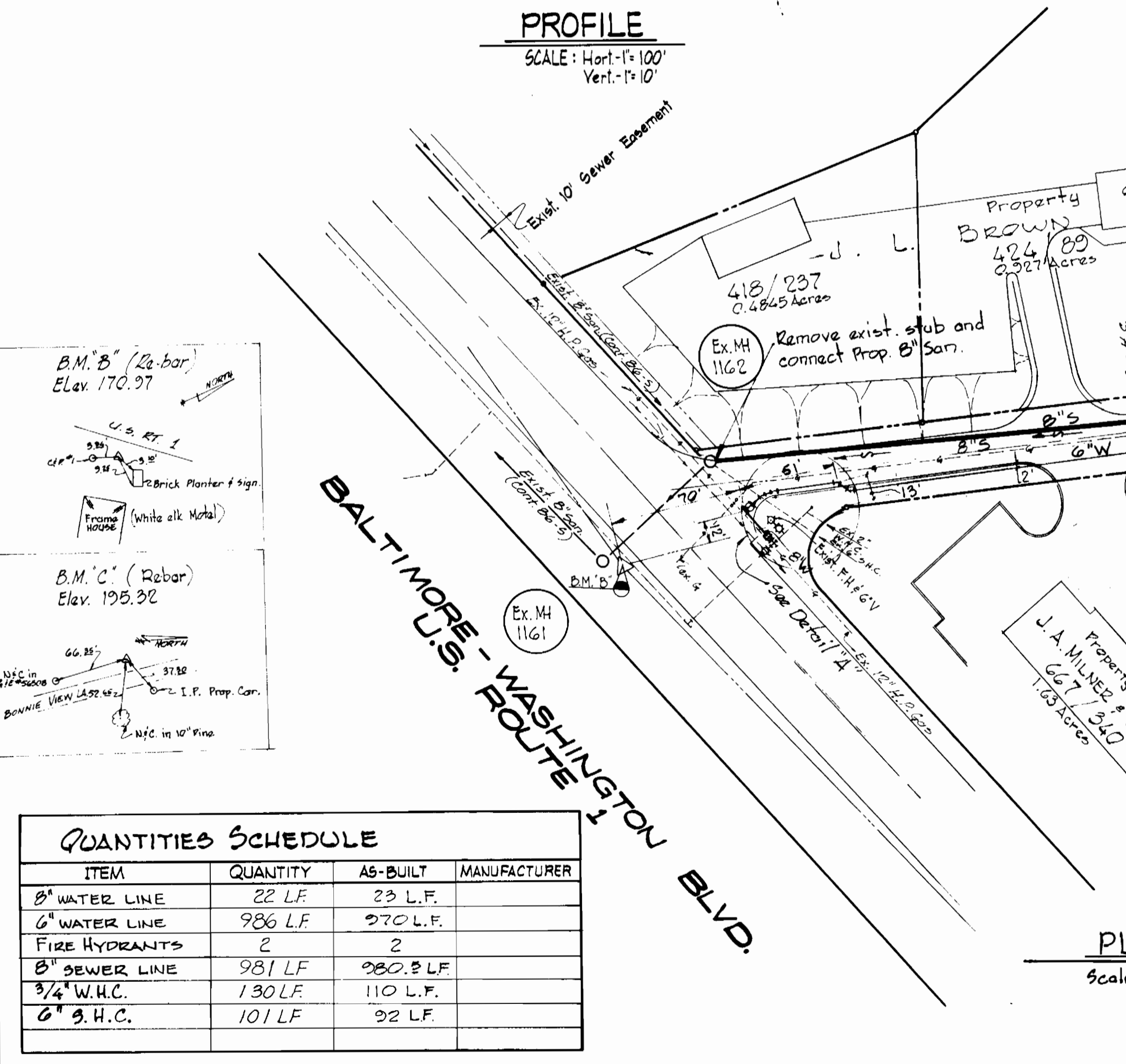
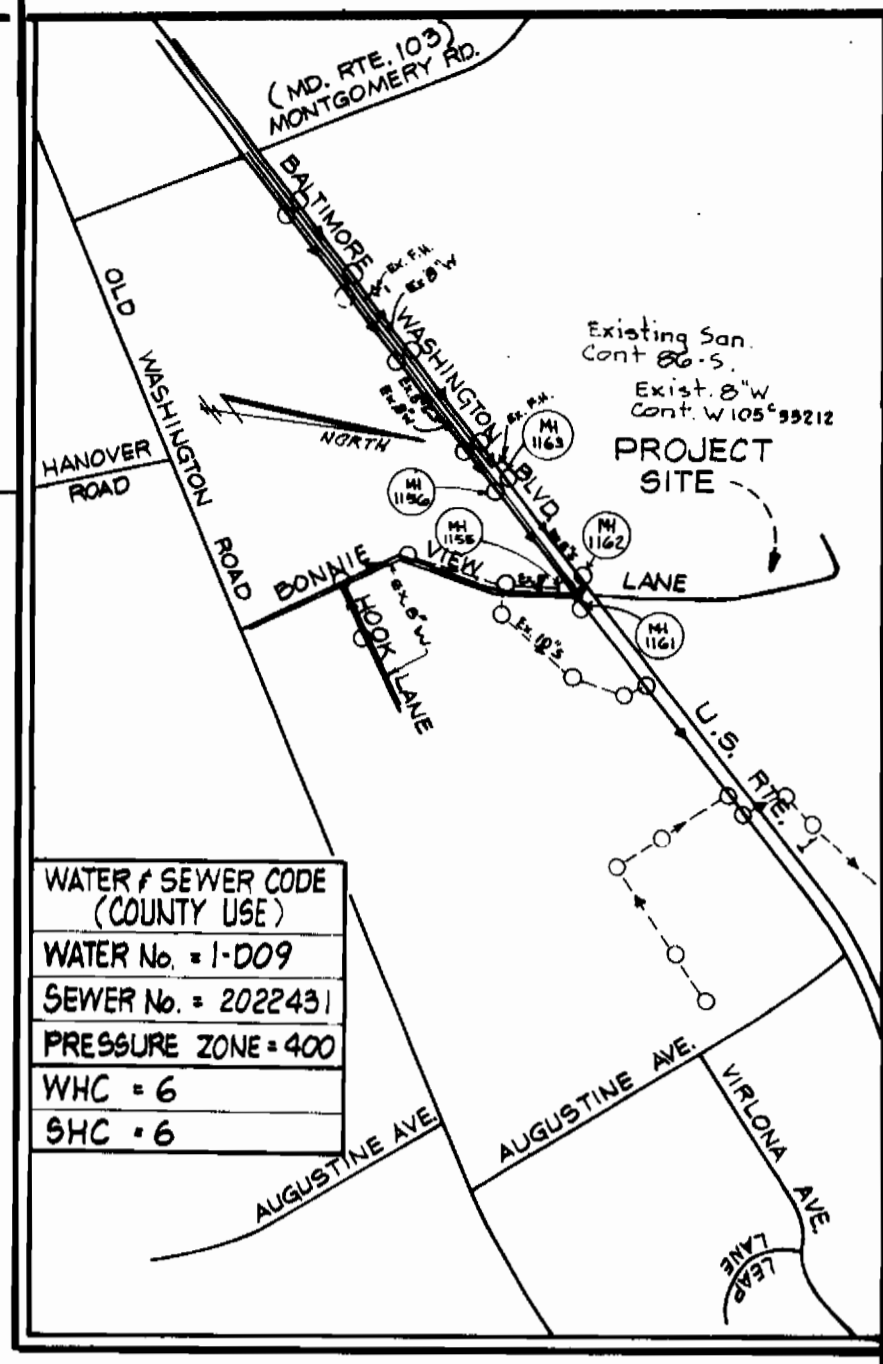
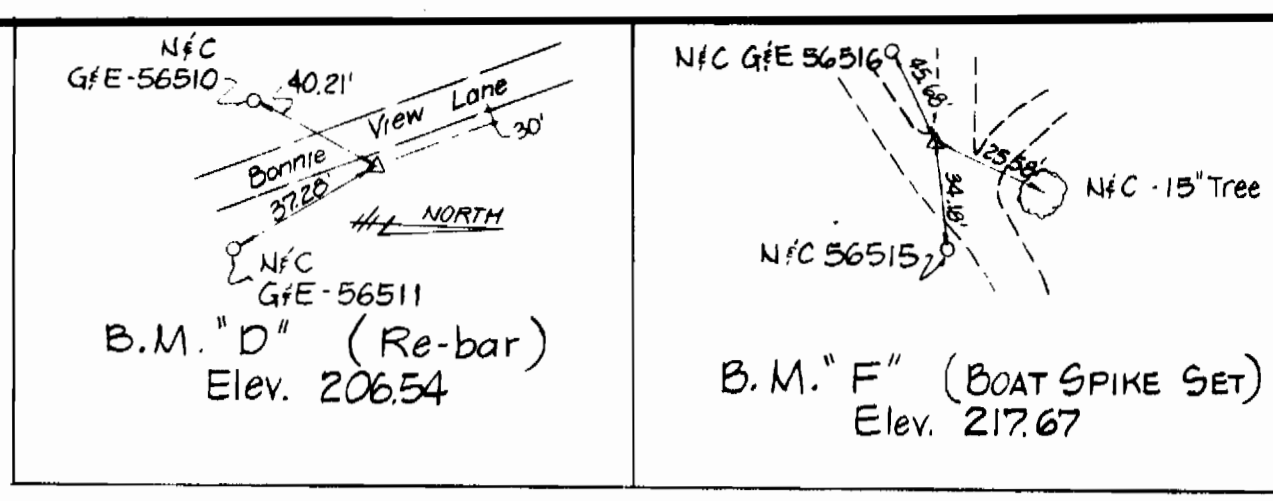


PROFILE
SCALE: Hor. 1"=100'
Vert. 1"=10'



PLAN
Scale 1"=50'



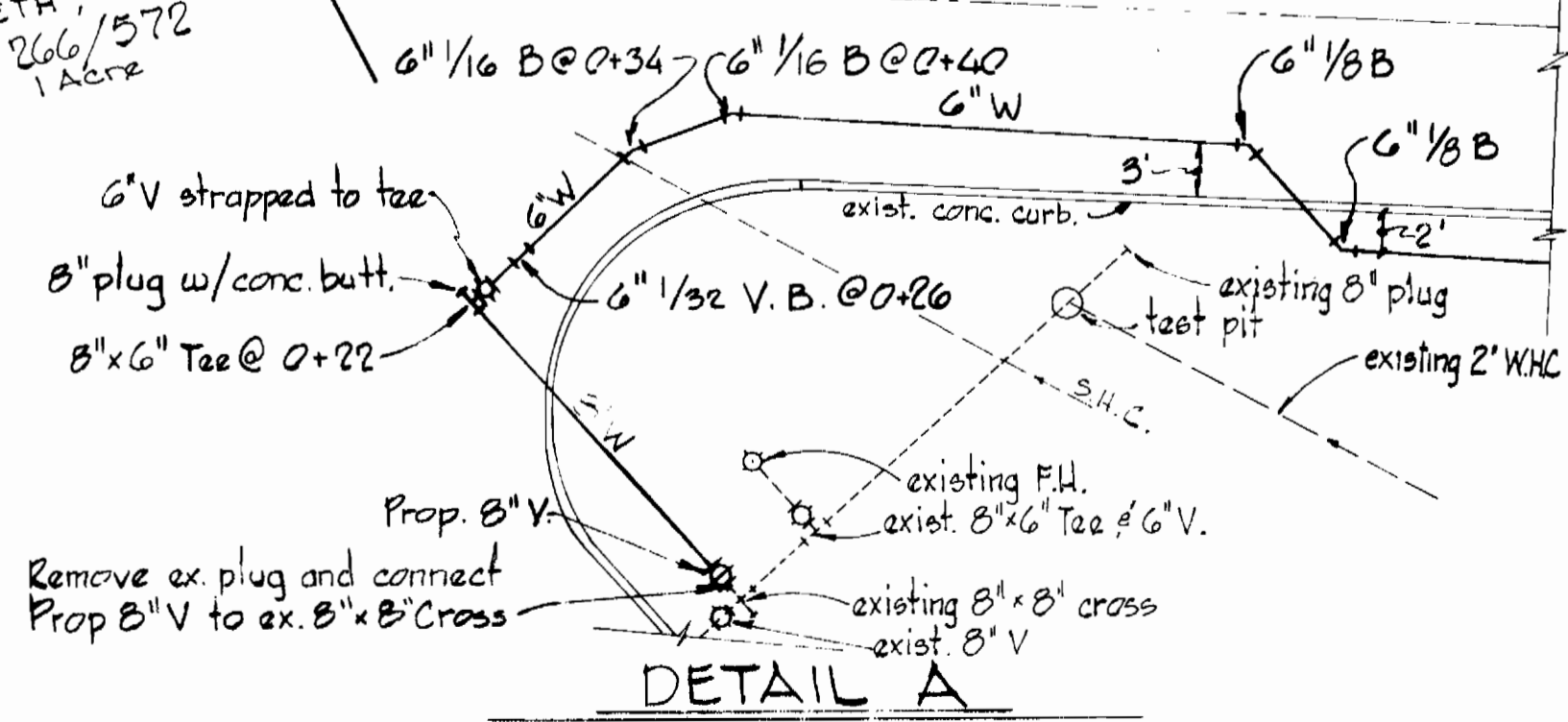
VICINITY MAP
Scale: 1"=600'

GENERAL NOTES

- All water mains to be C.I.P., D.I.P., or A.C.P. unless otherwise shown.
- Top of all water mains to have a minimum of 3.5 ft cover unless otherwise noted.
- All valves shall be strapped to trees in accordance with standard details.
- Block all fittings with concrete see standards bound in specifications.
- Bury line elevations on fire hydrants shall be set to the elevations shown on the drawings. All fire hydrants shall be strapped and buttressed with concrete in accordance with standard details. Soil around the fire hydrants to be compacted in accordance with Section 5-15 of the Standard Specifications.
- All sewer mains shall be C.S.P.X., V.C.P.X. or A.C.P. Class 2400 unless otherwise noted.
- The contractor shall provide a joint in all sewer mains within 2'0" of exterior manhole wall.
- All manholes shall be 4'0" inside diameter unless otherwise noted.
- Approximate locations of existing mains are shown. The contractor shall take all necessary precautions to protect existing mains and services and maintain uninterrupted supply. Any damage incurred shall be repaired immediately.
- All horizontal controls are based on Maryland State Coordinates.
- All vertical controls are based on U.S.G.S. Datum.
- All pipe elevations shown are invert elevations.
- Clear all utilities by a minimum of 6', clear all poles by 2'0" minimum or tunnel as required.
- For all standard details see standards bound in specifications.
- Contractor shall locate existing utilities in advance of construction operations in the vicinity of proposed utilities.
- Contractor shall notify the following utilities or agencies at least five (5) days before starting work shown on these plans.
 - State Highway Administration 531-5533
 - Baltimore Gas & Electric Co. - Underground Electric Distribution Engineering "Damage Control" 754-5621
 - Baltimore Gas & Electric Co. - Underground Gas Distribution Engineering 559-0100
 - C.P. Telephone Co. 725-9976
 - A.T.&T. - Cable Location Division 301-393-3553
 - Colonial Pipeline Co. 781-4641.

Capital Project No. W-7-8094 # S-6-6081
Contract No. 839 W&S

QUANTITIES SCHEDULE			
ITEM	QUANTITY	AS-BUILT	MANUFACTURER
8" WATER LINE	22 L.F.	23 L.F.	
6" WATER LINE	986 L.F.	970 L.F.	
FIRE HYDRANTS	2	2	
8" SEWER LINE	981 L.F.	980.8 L.F.	
3/4" W.H.C.	130 L.F.	110 L.F.	
6" S.H.C.	101 L.F.	92 L.F.	



DETAIL A
SCALE 1"=10'

SEAL
DATE 5-14-79
WILLIAM O. FILBERT
PE No. 5901

Rev No	Date	Revision Description
1	2/17/79	Revised San MH 2 to 6 & Relocated 6" W-6+32 to 9+77

As Built 2/13/80 MW