

CONTRACT NO. 2833D-W&S
VILLAGE OF KINGS CONTRIVANCE
HOWARD COUNTY, MARYLAND
DEPARTMENT OF PUBLIC WORKS

QUANTITIES			
ITEM	BID	AS-BUILT	MATERIAL / SUPPLIER
10" Sewer	170 LF	170 LF	D.I.P. J.M.
8" Sewer	6,080 LF	6,102 LF	D.I.P. " "
Manholes	300 VF	286 VF	Atlantic Precast
6" Water	2,810 LF	2,782 LF	U.S. Pipe & Foundry
8" Water	1,570 LF	1,719 LF	" " " "
Fire Hydrants	8 Ea.	8 Ea.	A.P. Smith
8" Sewer		227 LF	D.I.P.



Kenneth A. Smith
 Village of Kings Contrivance
 Section 3, Area I, Phase IIC
 Contract No. 2833D-W&S

WHITMAN, REQUARDT & ASSOCIATES ENGINEERS 1304 ST. PAUL ST. BALTIMORE, MARYLAND	DEPARTMENT OF PUBLIC WORKS HOWARD COUNTY, MARYLAND <i>Henry F. Nemmer</i> 1/21/79 DIRECTOR OF PUBLIC WORKS - DATE	CONTRACT NO. 2833D-W&S <i>W.O. Smith</i> 2-2-79 CHIEF-BUREAU OF ENGINEERING - DATE	LOCATION MAP OF WATER & SEWER MAINS	COLUMBIA VILLAGE OF KINGS CONTRIVANCE ELECTION DISTRICT GUILFORD NO.6	DRAWING NO. 1 OF 7 SCALE 1"=600'
---	--	--	--	---	-------------------------------------

WS 833-WS/1

SUSPENSE

SUSPENSE

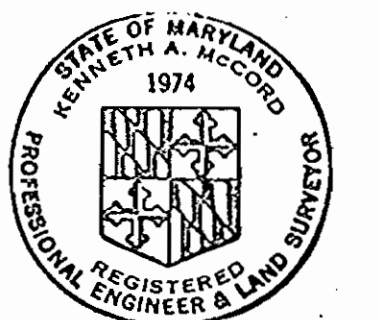
GENERAL NOTES

- APPROXIMATE LOCATION OF EXISTING MAINS ARE SHOWN. THE CONTRACTOR SHALL TAKE ALL NECESSARY PRECAUTIONS TO PROTECT EXISTING MAINS AND SERVICES AND MAINTAIN UNINTERRUPTED SUPPLY. ANY DAMAGE INCURRED SHALL BE REPAIRED IMMEDIATELY.
- ALL PIPE ELEVATIONS SHOWN ARE INVERT ELEVATIONS.
- THE CONTRACTOR SHALL LOCATE EXISTING UTILITIES A MINIMUM OF TWO WEEKS IN ADVANCE OF CONSTRUCTION OPERATIONS IN VICINITY OF UTILITIES.
- THE CONTRACTOR SHALL NOTIFY THE FOLLOWING UTILITIES OR AGENCIES AT LEAST FIVE DAYS BEFORE STARTING WORK SHOWN ON THESE PLANS:
BALTIMORE GAS AND ELECTRIC COMPANY - UNDERGROUND ELECTRIC DISTRIBUTION ENGINEERING DAMAGE CONTROL 234-5691
UNDERGROUND GAS DISTRIBUTION ENGINEERING 234-5621
CHESAPEAKE AND POTOMAC TELEPHONE COMPANY 393-3648.
MISS. UTILITY - 1 - 559-0100
- FOR ALL STANDARD DETAILS SEE STANDARDS BOUND IN SPECIFICATIONS.
- ALL HORIZONTAL AND VERTICAL CONTROLS ARE BASED ON MARYLAND STATE DATUM.
- CLEAR ALL UTILITIES BY A MINIMUM OF 6".
- BLOCK ALL FITTINGS WITH CONCRETE, SEE STANDARDS BOUND IN SPECIFICATIONS.
- ALL WATER MAINS SHALL HAVE A MINIMUM OF 3 1/2' COVER.
- ALL WATER MAINS SHALL BE C.I.P., D.I.P. OR A.C.P. UNLESS OTHERWISE NOTED
- ALL VALVES SHALL BE STRAPPED TO TEES WHERE APPLICABLE IN ACCORDANCE WITH THE STANDARD DETAILS.
- ALL FIRE HYDRANTS SHALL BE STRAPPED AND BUTTRESSED IN ACCORDANCE WITH THE STANDARD DETAILS. SOIL AROUND THE HYDRANTS SHALL BE COMPACTED IN ACCORDANCE WITH SECTION 5-15 OF THE STANDARD SPECIFICATIONS.
- PAYMENT FOR STRAPPING FIRE HYDRANTS AND VALVES WILL BE INCLUDED IN UNIT PRICE BID FOR FURNISHING AND LAYING WATER MAINS.
- BURY LINE ELEVATIONS ON FIRE HYDRANTS SHALL BE SET TO THE ELEVATION SHOWN ON THE DRAWINGS.
- ALL W.H.C.'S SHALL BE 3/4" DIAMETER UNLESS OTHERWISE NOTED.
- WATER SERVICES SHALL BE FOR INSIDE METER SETTINGS.
- ALL SEWER MAINS SHALL BE C.S.P.X., V.C.P.X. OR A.C.P. CLASS 2400 UNLESS OTHERWISE NOTED.
- ALL MANHOLES SHALL BE 4'-0" INSIDE DIAMETER.
- THE CONTRACTOR SHALL PROVIDE A JOINT IN ALL SEWER MAINS WITHIN 2'-0" OF EXTERIOR MANHOLE WALLS.
- MANHOLES SHOWN WITH 12" WALLS ARE FOR BRICK MANHOLES ONLY.
- TREES ARE TO BE PROTECTED FROM DAMAGE TO MAXIMUM EXTENT. TREES LOCATED WITHIN THE CONSTRUCTION STRIP ARE NOT TO BE REMOVED OR DAMAGED BY THE CONTRACTOR.

BENCH MARKS

W.R.&A. B.M. 2 Elev. 334.54
R.R. Spike at side 18" Twin Poplar, 40' ±
right at Vollmerhausen Rd. Sta. 15+35

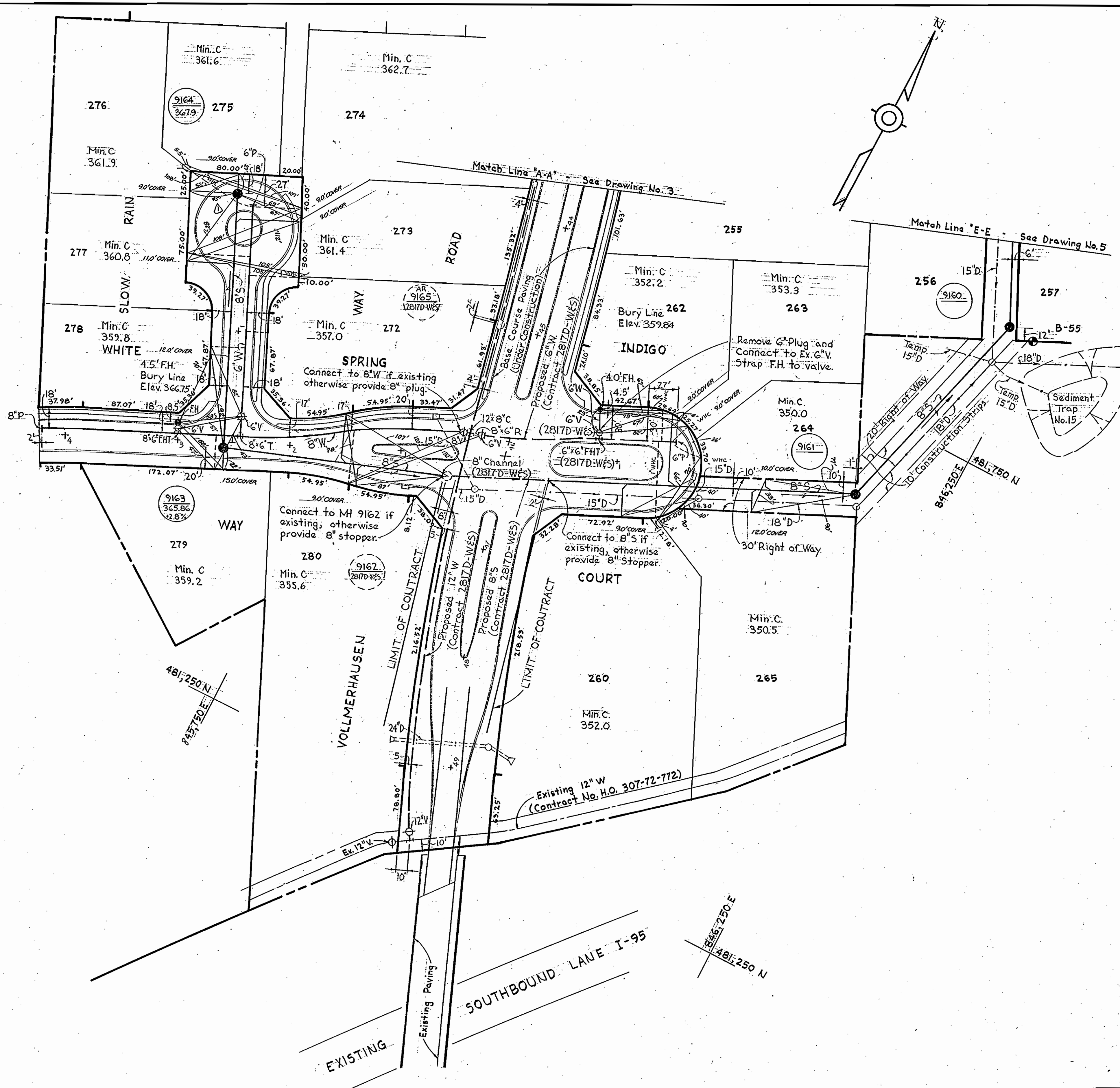
W.R.&A. B.M. 3 Elev. 354.18
R.R. spike at side 16" Poplar, 50' ± left at
Vollmerhausen Rd. Sta. 25+00



Kenneth A. McLeod

Village of Kings Contrivance
Section 3, Area I, Phase III
Contract No. 2833D-W&S

July 26, 79	Revised MH 9164 Rim Elev.
No	Date
	Revision



WHITMAN, REQUARDT & ASSOCIATES
ENGINEERS
1304 ST. PAUL ST.
BALTIMORE, MARYLAND

DEPARTMENT OF PUBLIC WORKS
HOWARD COUNTY, MARYLAND
Mark F. Norman 2/2/79
DIRECTOR OF PUBLIC WORKS - DATE

W.O. Lambert 2-2-79
CHIEF BUREAU OF ENGINEERING - DATE

CONTRACT NO. 2833D-W&S

PLAN OF WATER & SEWER MAINS

COLUMBIA
VILLAGE OF KINGS CONTRIVANCE
ELECTION DISTRICT GUILFORD NO.6

DRAWING NO. 2 OF 7
SCALE 1" = 50'

W.O. 7263-2E

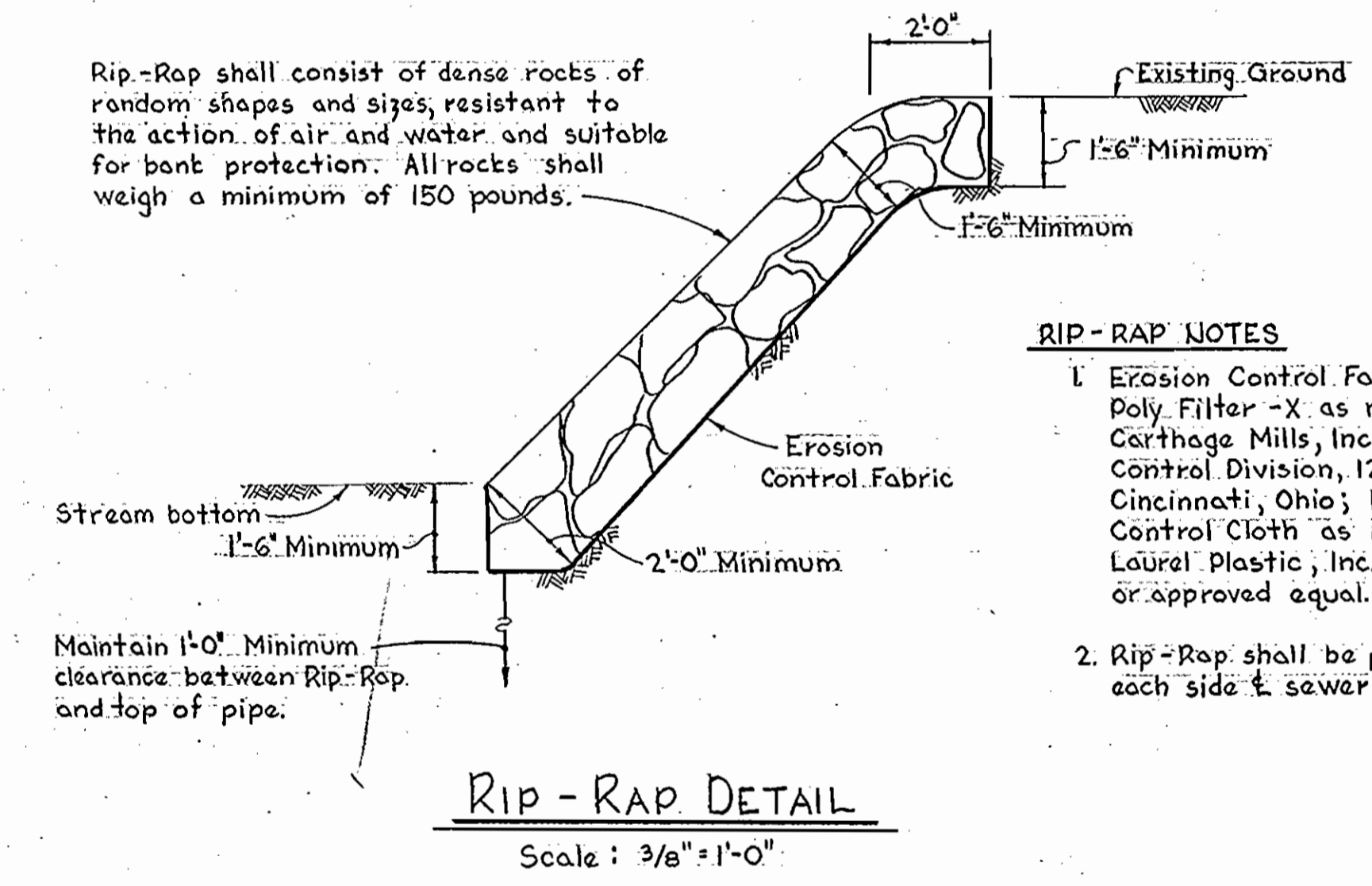
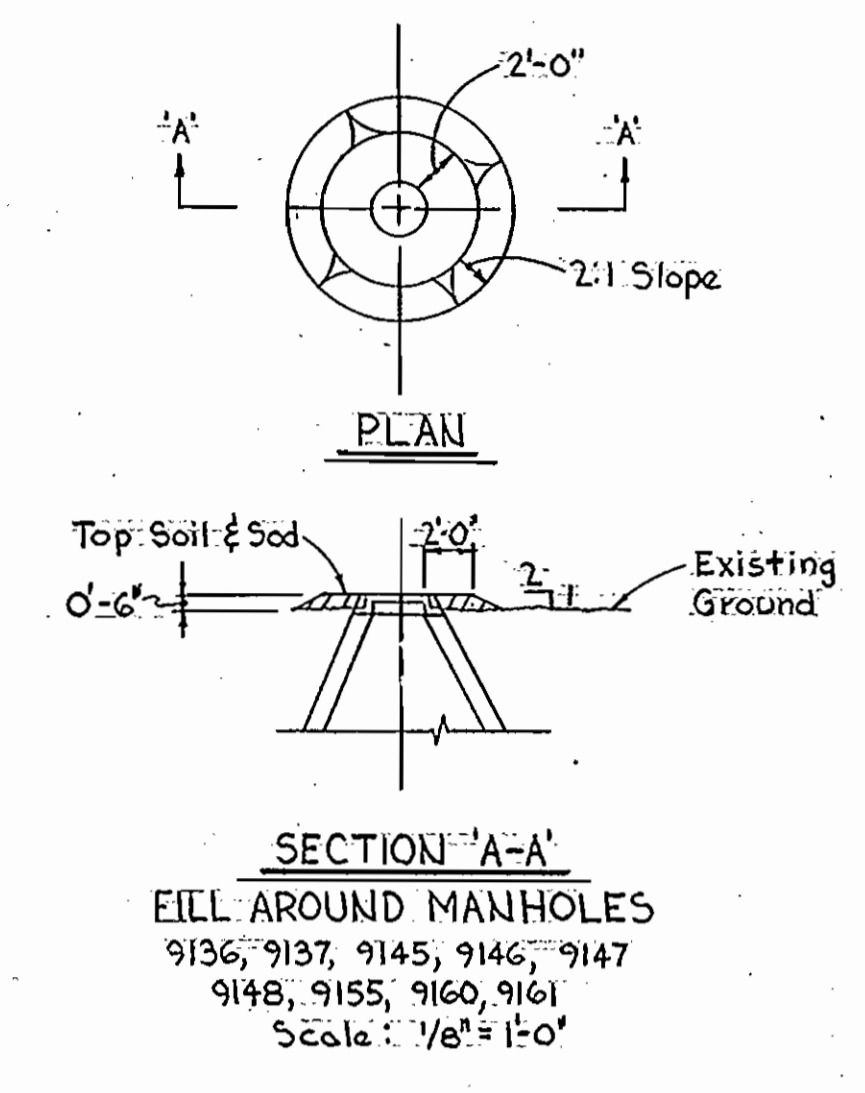
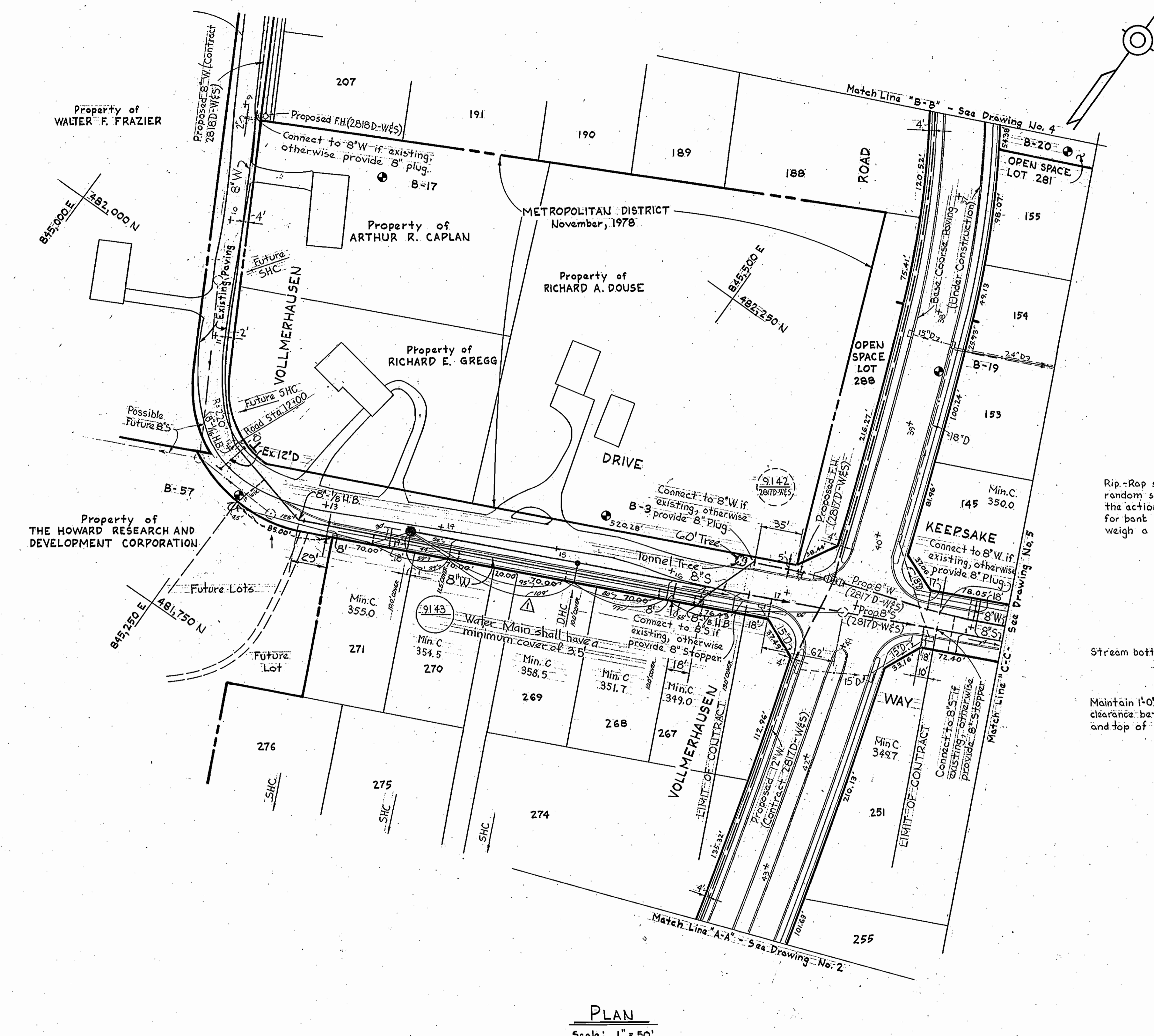
JANUARY 17, 1979

AS-BUILT SEPT. 18, 1979

WS 833-WS/2

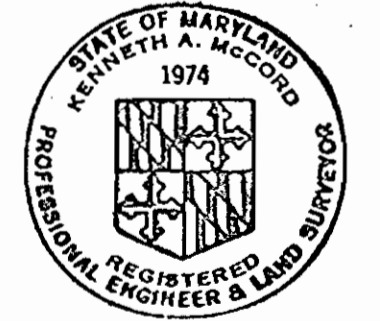
SUPERSEDES

SUPERSEDES



- RIP-RAP NOTES**
- Erosion Control Fabric shall be Poly Filter -X as manufactured by Carthage Mills, Inc., Erosion Control Division, 124 West 66th Street, Cincinnati, Ohio; Laurel Erosion Control Cloth as manufactured by Laurel Plastic, Inc., Madison, Maine, or approved equal.
 - Rip-Rap shall be placed 6" minimum each side of sewer or as shown.

PLAN
Scale: 1" = 50'



Kenneth A. McCord

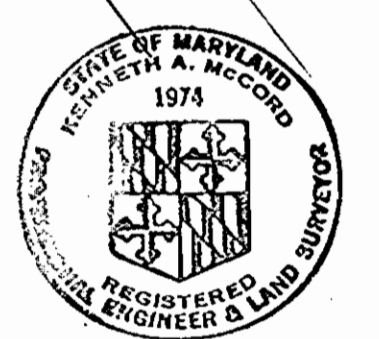
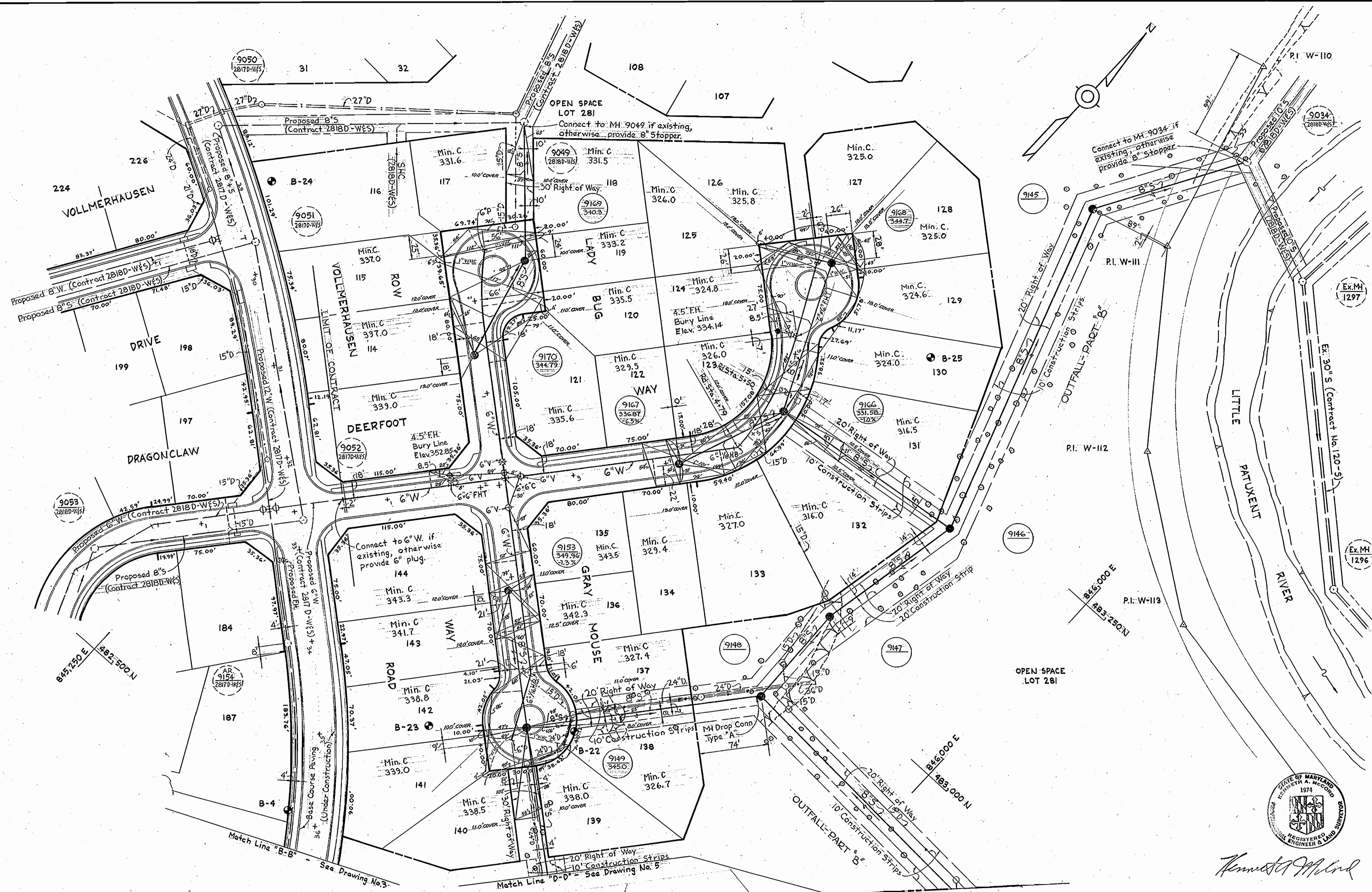
Village of Kings Contrivance
Section 3, Area I, Phase IV
Contract No. 2833D-W&S

9-7-79	Water Location Changed
No.	DATE
	REVISION

WHITMAN, REQUARDT & ASSOCIATES ENGINEERS 1304 ST. PAUL ST. BALTIMORE, MARYLAND	DEPARTMENT OF PUBLIC WORKS HOWARD COUNTY, MARYLAND <i>Walter F. Nimmer</i> 2/2/79 DIRECTOR OF PUBLIC WORKS - DATE	CONTRACT NO. 2833D-W&S <i>W. O. Lambert</i> 2-2-79 CHIEF-BUREAU OF ENGINEERING - DATE	PLAN & DETAILS OF WATER & SEWER MAINS	COLUMBIA VILLAGE OF KINGS CONTRIVANCE ELECTION DISTRICT GUILFORD NO. 6	DRAWING NO. 3 OF 7	SCALE AS SHOWN
					JANUARY 17, 1979	

W.O. 7263-2E

WS 833-WS/3



Kenneth A. McCord

Village of Kings Contrivance
Section 3, Area I, Phase IV
Contract No. 2833D-W&S

WHITMAN, REQUARDT & ASSOCIATES ENGINEERS 1304 ST. PAUL ST. BALTIMORE, MARYLAND	DEPARTMENT OF PUBLIC WORKS HOWARD COUNTY, MARYLAND <i>W. O. Hubert</i> 2-2-79 DIRECTOR OF PUBLIC WORKS - DATE CHIEF-BUREAU OF ENGINEERING - DATE	CONTRACT NO. 2833D-W&S	PLAN OF WATER & SEWER MAINS	COLUMBIA VILLAGE OF KINGS CONTRIVANCE ELECTION DISTRICT GUILFORD NO.6	DRAWING NO. 4 OF 7 SCALE 1" = 50'
---	--	------------------------	--------------------------------	---	--------------------------------------

W.O. 7263-2E

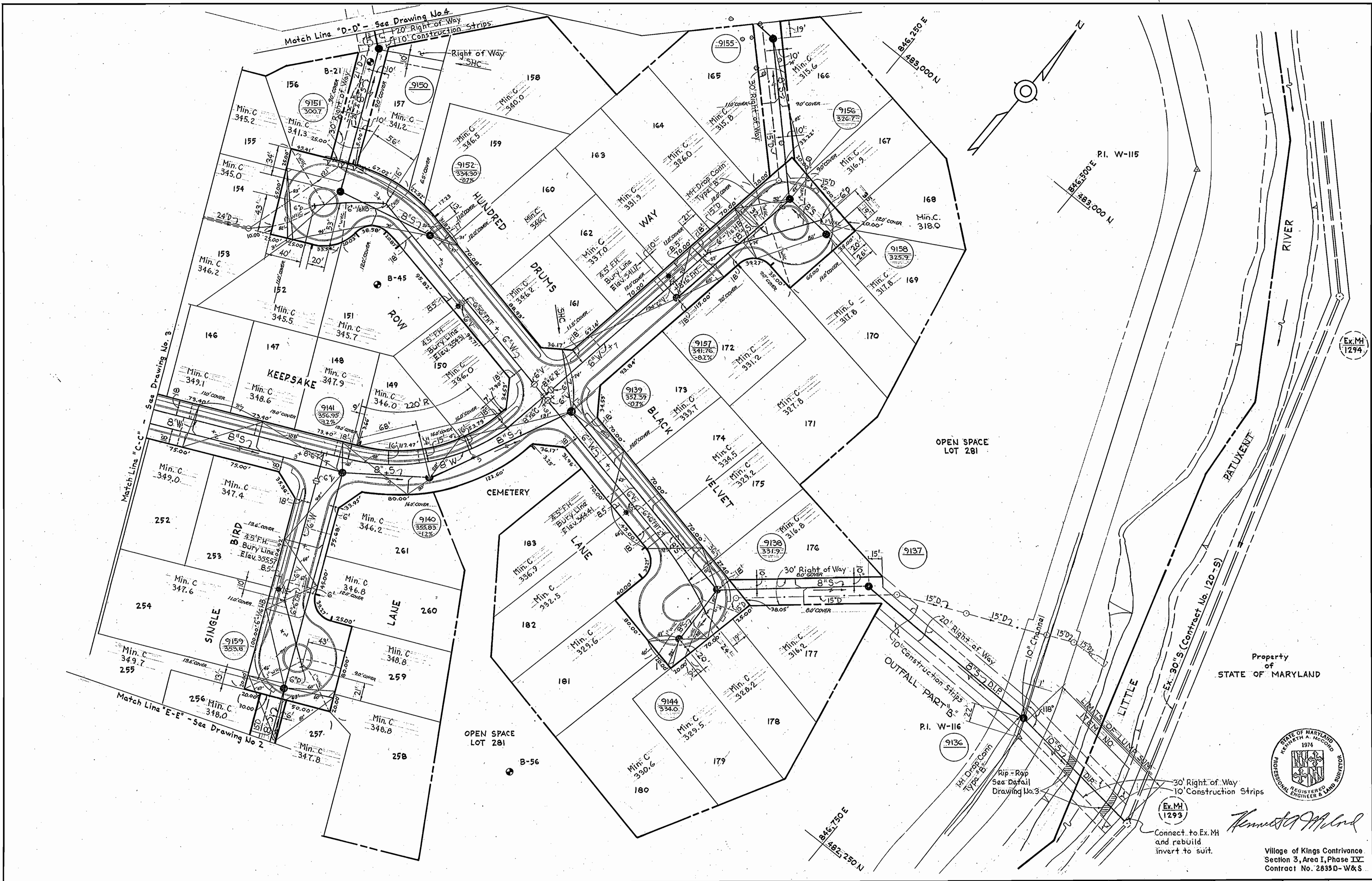
JANUARY 17, 1979

AS-BUILT SEPT. 18, 1979

WS 833-WS/4

SUSPENSE

SUSPENSE



Kenneth A. McLeod
 Connect. to Ex. M and rebuild invert to suit.

Village of Kings Contrivance
 Section 3, Area I, Phase IV
 Contract No. 2833D-W&S

WHITMAN, REQUARDT & ASSOCIATES ENGINEERS 1304 ST. PAUL ST. BALTIMORE, MARYLAND	DEPARTMENT OF PUBLIC WORKS HOWARD COUNTY, MARYLAND <i>W. O. F. ...</i> 2-2-79 DIRECTOR OF PUBLIC WORKS - DATE CHIEF-BUREAU OF ENGINEERING - DATE	CONTRACT NO. 2833D-W&S	PLAN OF WATER & SEWER MAINS	COLUMBIA VILLAGE OF KINGS CONTRIVANCE ELECTION DISTRICT GUILFORD NO. 6	DRAWING NO. 5 OF 7	SCALE 1" = 50'
---	--	------------------------	--------------------------------	--	--------------------------	-------------------

W.O. - 7263 - 2E

JANUARY 17, 1979

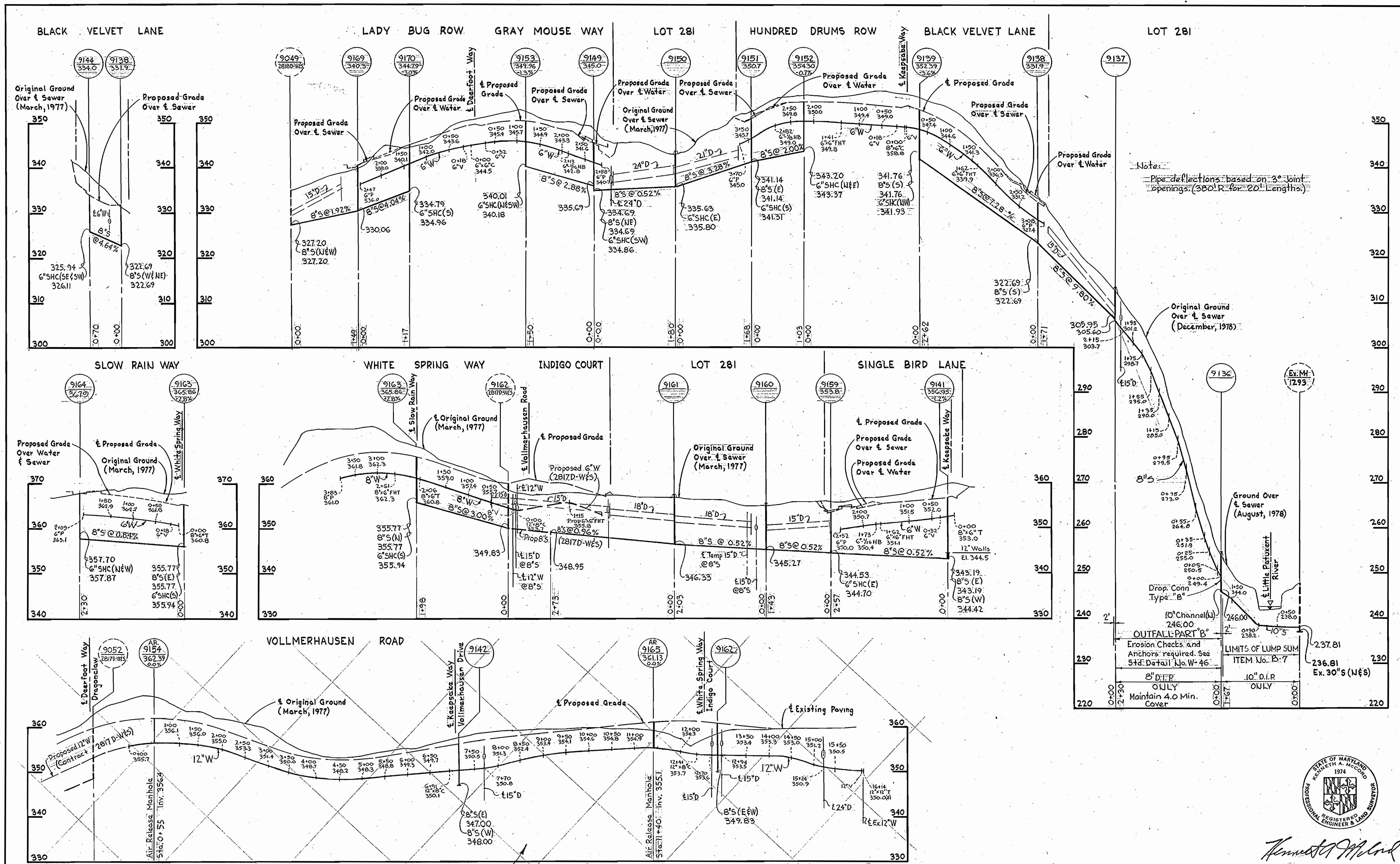
AS-BUILT SEPT 18, 1979

WS 833-WS/5

SUSPENSE

SUSPENSE

SUSPENSE



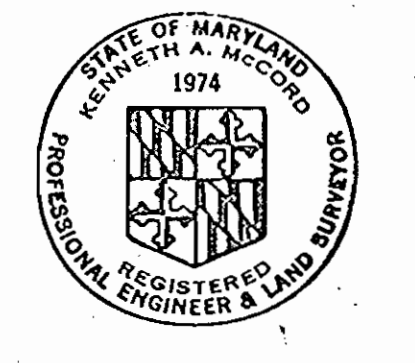
Note:
Pipe deflections based on 3° joint openings (380' R for 20' lengths)

Original Ground Over & Sewer (December, 1978)

Ground Over & Sewer (August, 1978)

OUTFALL-PART B
Erosion Checks and Anchors required. See Std. Detail No. W-46.
LIMITS OF LUMP SUM ITEM No. B-7
237.81
236.81
Ex. 30's (N&S)

NOT INCLUDED IN THIS CONTRACT



Kenneth A. McLeod
REGISTERED PROFESSIONAL ENGINEER & LAND SURVEYOR

Village of Kings Contrivance
Section 3, Area I, Phase IV
Contract No. 2833D-W&S

July 24, 79	Revised Profile - Slow Rain Way
No	Date
	Revisions

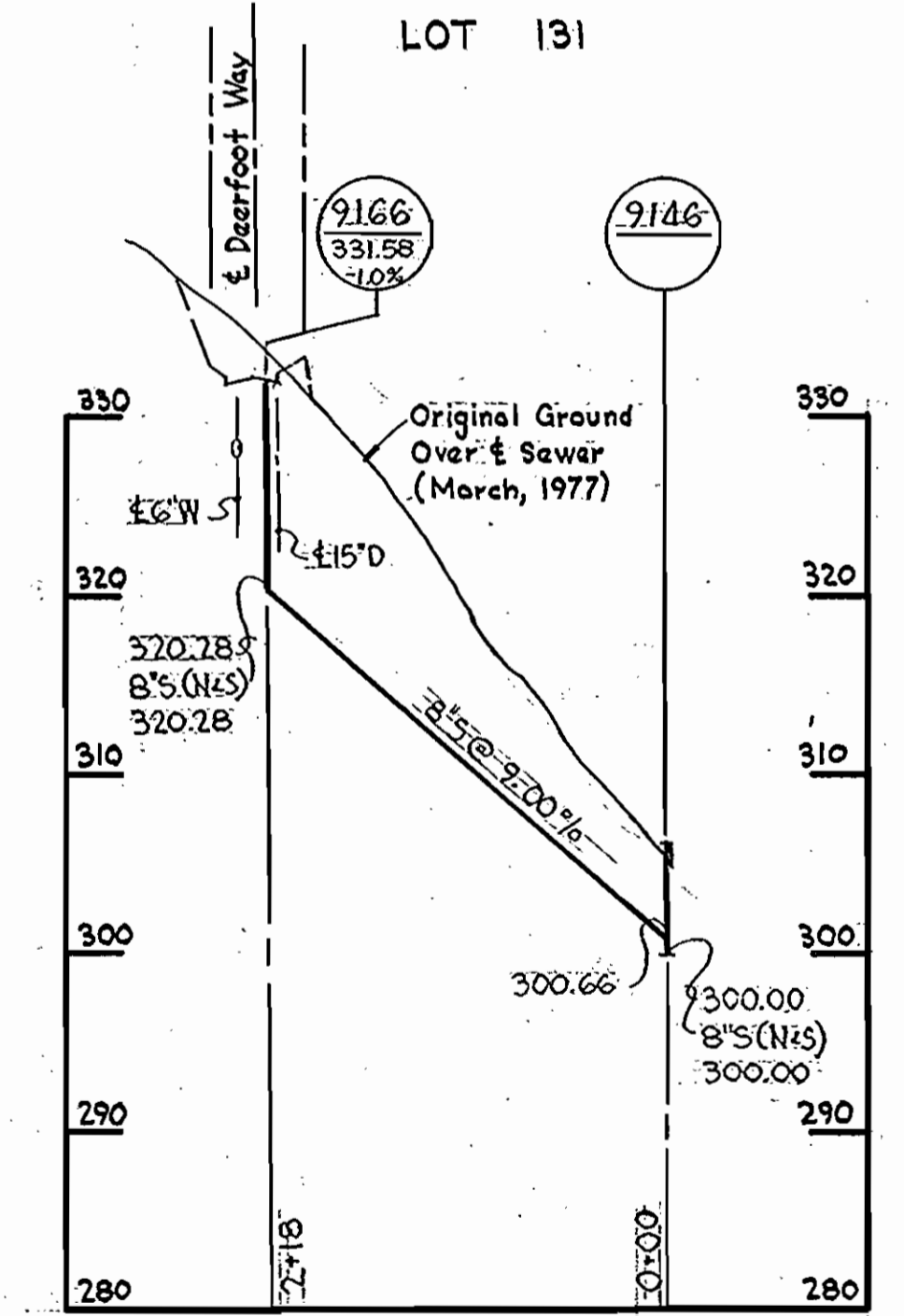
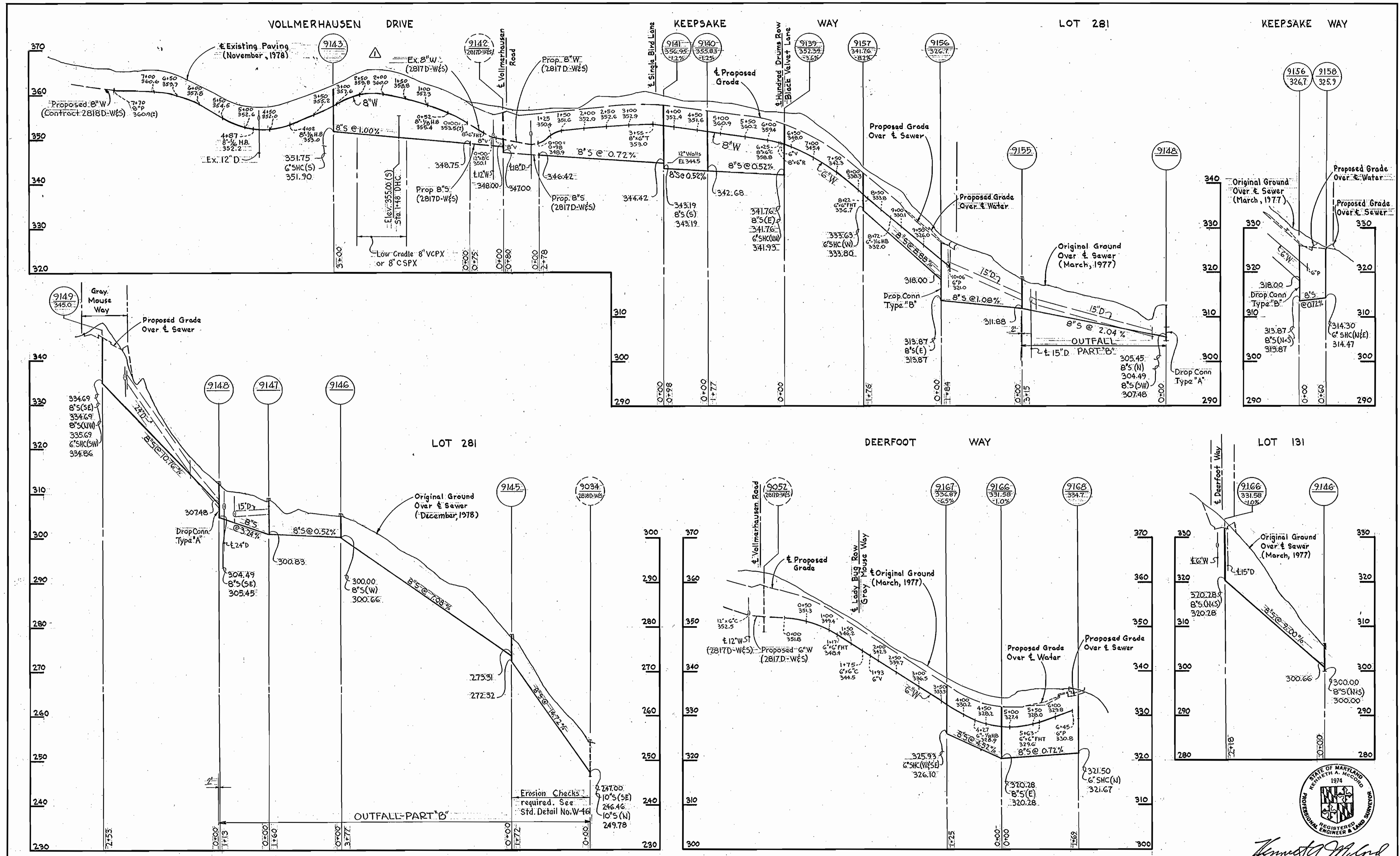
WHITMAN, REQUARDT & ASSOCIATES ENGINEERS 1304 ST. PAUL ST. BALTIMORE, MARYLAND	DEPARTMENT OF PUBLIC WORKS HOWARD COUNTY, MARYLAND <i>Don F. Nemy</i> 2/2/79 DIRECTOR OF PUBLIC WORKS - DATE	CONTRACT NO. 2833D-W&S <i>W. O. Whit</i> 2-2-79 CHIEF-BUREAU OF ENGINEERING - DATE	PROFILES OF WATER & SEWER MAINS	COLUMBIA VILLAGE OF KINGS CONTRIVANCE ELECTION DISTRICT GUILFORD NO. 6	DRAWING NO. 6	SCALE H:V = 1" = 100'
					OF 7	V:1" = 10'

W.O. 7263-2E

JANUARY 17, 1979

AS-BUILT SEPT. 18, 1979

WS 833-WS/6



Kenneth A. McCord
 Village of Kings Contrivance
 Section 3, Area I, Phase II
 Contract No. 2833D-W&S

9-7-79 Water Location Changed
 No. DATE REVISION

WHITMAN, REQUARDT & ASSOCIATES
 ENGINEERS
 1304 ST. PAUL ST.
 BALTIMORE, MARYLAND

DEPARTMENT OF PUBLIC WORKS
 HOWARD COUNTY, MARYLAND
W. O. Lambert 2-2-79
 DIRECTOR OF PUBLIC WORKS - DATE CHIEF-BUREAU OF ENGINEERING - DATE

CONTRACT NO. 2833D-W&S

PROFILES OF
 WATER & SEWER MAINS

COLUMBIA
 VILLAGE OF KINGS CONTRIVANCE
 ELECTION DISTRICT GUILFORD NO. 6

DRAWING NO. 7 OF 7
 SCALE H: 1"=100' V: 1"=10'

WS 833 - WS/7

SUPERSEDES

SUPERSEDES