

Water & Sewer Code
 Water No. F07
 Sewer No. 591000, 590000, 589000

GENERAL NOTES

1. Approximate locations of existing mains are shown. The Contractor shall take all necessary precautions to protect existing mains and services and maintain uninterrupted supply. Any damage incurred shall be repaired immediately.
2. All Horizontal Controls are based on Maryland State Coordinates.
3. All Vertical Controls are based on U.S.G.S. Datum.
4. All pipe elevations as shown are invert elevations.
5. Clear all utilities by a minimum of 6". Clear all poles 2'-0" minimum or tunnel as required.
6. For all Standard Details see Standards bound in Specifications.
7. Contractor shall locate existing utilities in advance of construction operations in the vicinity of proposed utilities.
8. Contractor shall notify the following utilities or agencies at least five (5) days before starting work shown on these plans.
 State Highway Administration 531-5533
 Baltimore Gas and Electric Co. - Underground Electric Distribution Engineering - "Damage Control" - 234-9001
 Baltimore Gas & Electric Company - Underground Gas Distribution Engineering - 559-0100
 Chesapeake and Potomac Telephone Co. - 726-9070
 American Telephone and Telegraph - Cable Location Division - 301-303-3553
 Colonial Pipeline Company - 701-4041
9. Trees are to be protected from damage to maximum extent. Trees located with the construction strip are not to be removed or damaged by the Contractor.
10. Contractor shall remove trees, stumps, and roots along line of excavation as directed by the Engineer. Payment for such removal shall be included in the unit price bid for excavation and backfill for water and sewer mains.
11. Place regulation "Men Working" and warning signs as required to comply with Maryland State Highway Administration Manual of Traffic Control for Highway Construction and Maintenance Operations.
12. All water mains to be C.I.P., D.I.P., or A.C.P. unless otherwise noted.
13. Top of all water mains to have a minimum of 3 1/2' cover unless otherwise noted.
14. All valves shall be strapped to trees in accordance with Standard Details.
15. Block all fittings with concrete. See Standards bound in Specifications.
16. Bury line elevations on fire hydrants shall be set to the elevations shown on the drawings. All fire hydrants shall be strapped and buttressed with concrete in accordance with Standard Details. Soil around the fire hydrants to be compacted in accordance with Sect. 5-15 of Standard Specifications.
17. All water house connections shall be inside meter settings.
18. All water house connections to be 3/4" diameter unless otherwise noted.
19. All sewer mains shall be C.S.P.X., V.C.P.X., or A.C.P. Class 2400 unless otherwise noted.
20. The Contractor shall provide a joint in all sewer mains within 2'-0" of exterior manhole walls.
21. All manholes shall be 4'-0" inside diameter, unless otherwise noted.

QUANTITIES

| Items | Bid | As Built | Material / Supplier |
|-----------|-----------|-----------|--------------------------|
| 8" Sewer | 5292 L.F. | 5206 L.F. | JOHNS MANSVILLE - A.C.P. |
| 6" Water | 1244 L.F. | 1925 L.F. | ATLANTIC STATES D.I.P. |
| 8" Water | 421 L.F. | 421 L.F. | " " " |
| 12" Water | 1845 L.F. | 1842 L.F. | " " " |
| 6" F.H. | 6 | 6 ea. | DRESSER M&H |

CONTRACT 2823 -D-W&S

"GRAY ROCK FARM"

SECTION ONE

Water and Sewer Extension

Howard County, Maryland Department of Public Works



KIDDE CONSULTANTS, INC.
 ENGINEERS • ARCHITECTS • PLANNERS
 BALTIMORE, MARYLAND

DEPARTMENT OF PUBLIC WORKS
 HOWARD COUNTY MARYLAND
 Director: *Don F. Nemy* 3-19-79
 Chief, Bureau of Engineering: *W.O. Lambert* 3-16-79

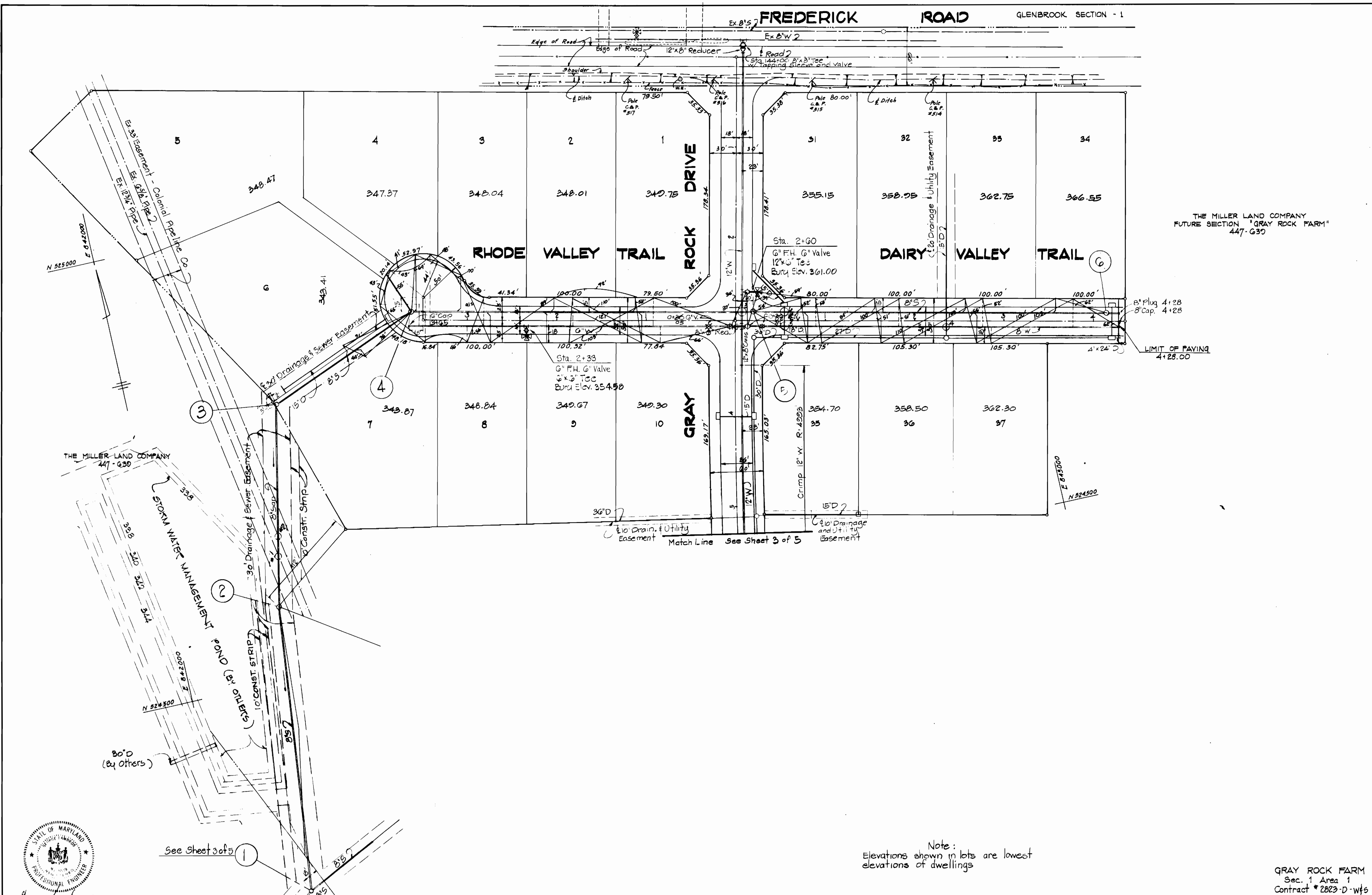
CONTRACT NO. 2823-D-W&S

LOCATION MAP OF
 WATER & SEWER MAINS

GRAY ROCK FARM
 SECTION 1 AREA 1
 ELECTION DISTRICT NUMBER 2

DRAWING NO. 1 OF 3
 SCALE AS SHOWN

Designed By: J.D.C. - Drawn By: K.B.H. - Checked By: T.J.R.III



THE MILLER LAND COMPANY
 FUTURE SECTION "GRAY ROCK FARM"
 447-G30

LIMIT OF PAVING
 4'x25' 00"

Note:
 Elevations shown in lots are lowest
 elevations of dwellings

GRAY ROCK FARM
 Sec. 1 Area 1
 Contract # 2823-D-WFS



KIDDE CONSULTANTS, INC.
 ENGINEERS • ARCHITECTS • PLANNERS
 BALTIMORE, MARYLAND

DEPARTMENT OF PUBLIC WORKS
 HOWARD COUNTY MARYLAND
 Director: *W. F. Nemmer* Date: 3-19-79
 Chief, Bureau of Engineering: *W. L. L. L. L.* Date: 3-16-79

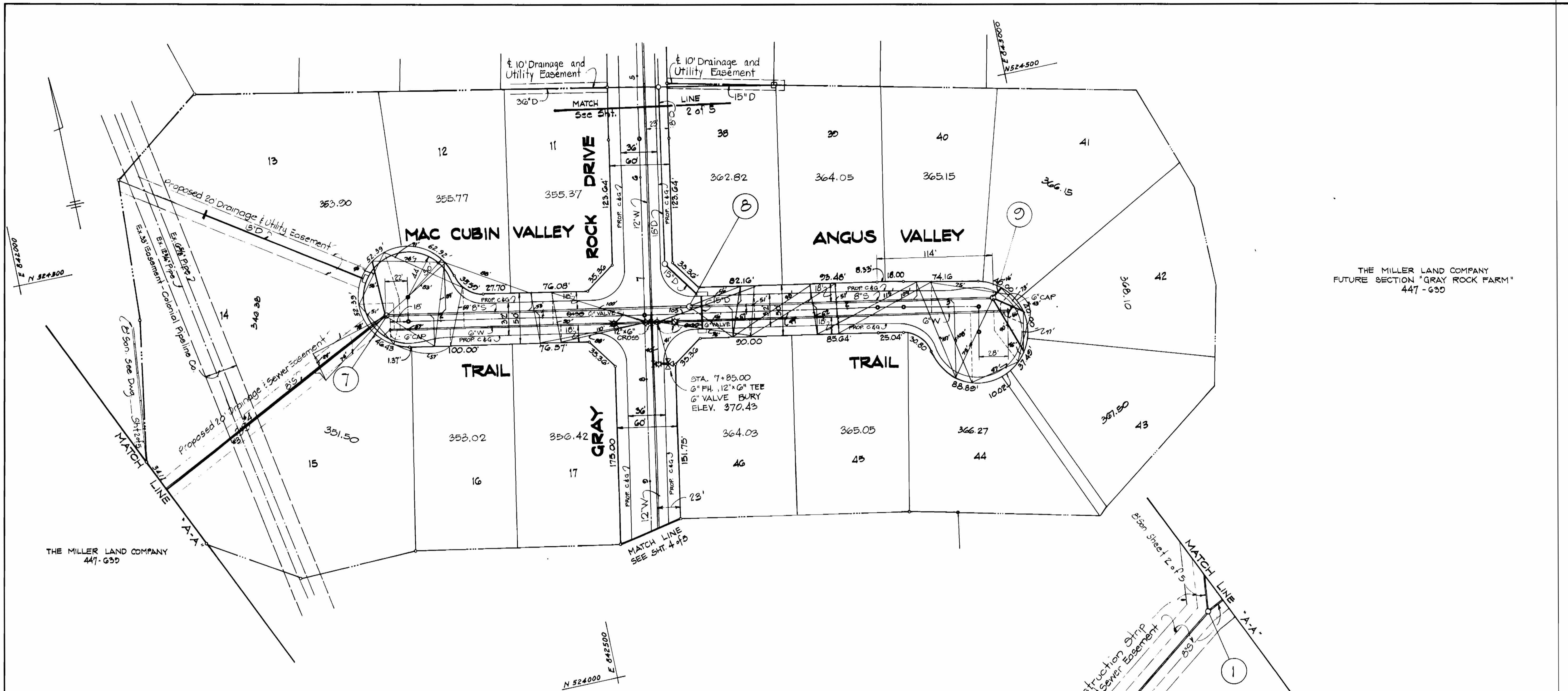
CONTRACT NO. 2823-D-WFS

GRAY ROCK DRIVE
 RHODE VALLEY TRAIL
 DAIRY VALLEY TRAIL

GRAY ROCK FARM
 SECTION 1 AREA 1
 ELECTION DISTRICT NUMBER 2

DRAWING NO. 2 OF 2
 SCALE 1"=50'

Designed By: J.D.C. - Drawn By: K.B.H. - Checked By: T.J.R.II

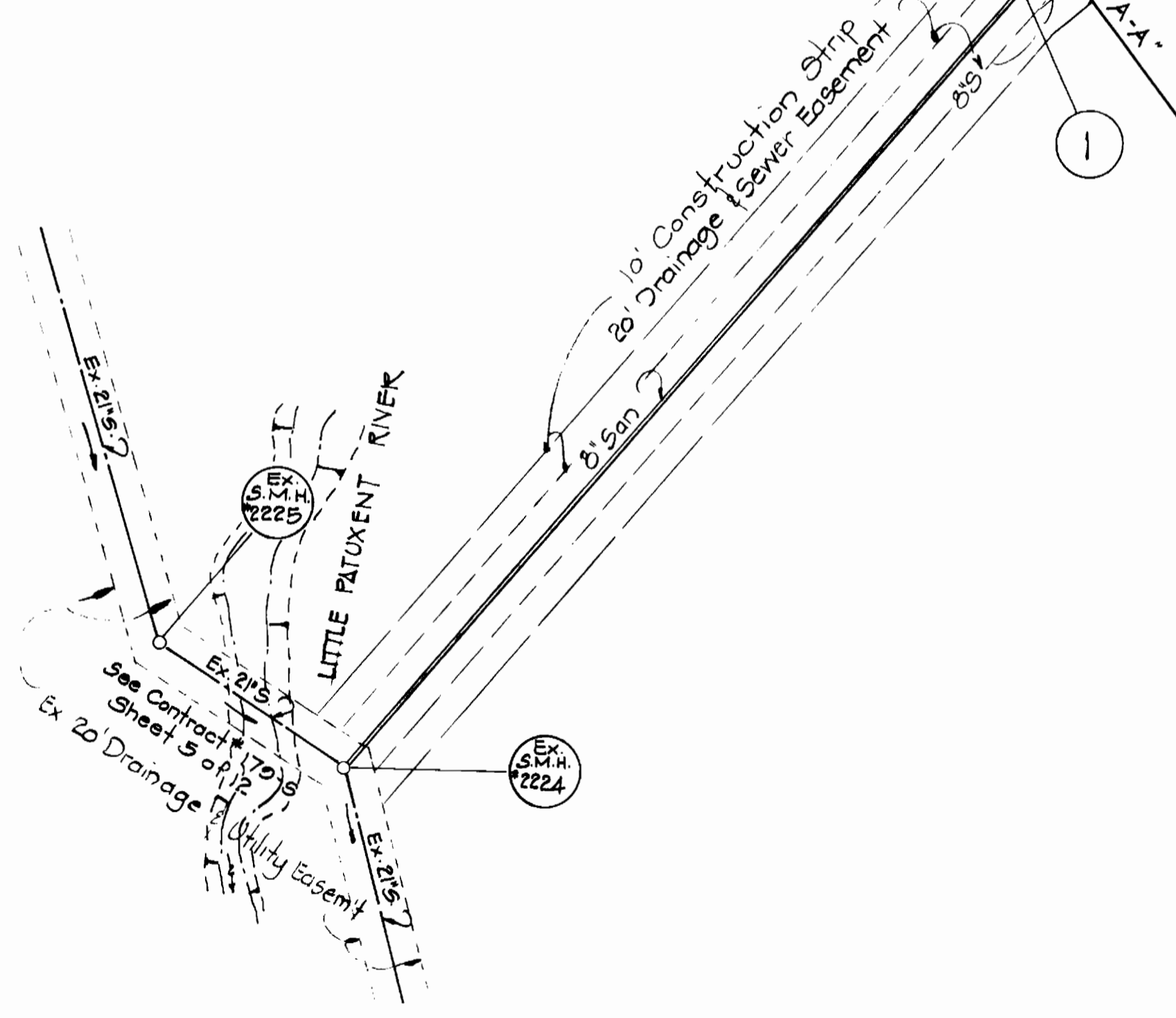


THE MILLER LAND COMPANY
 FUTURE SECTION "GRAY ROCK FARM"
 447-630

THE MILLER LAND COMPANY
 447-630

Note: Lots 13 & 42 Sewer Service Connection @ one percent from Sewer Main.

NOTE
 Elevations shown in lots are lowest elevations of dwellings



GRAY ROCK FARM
 Sec. 1 Area 1
 Contract # 2023-D-W45

KIDDE CONSULTANTS, INC.
 ENGINEERS • ARCHITECTS • PLANNERS
 BALTIMORE, MARYLAND

DEPARTMENT OF PUBLIC WORKS
 HOWARD COUNTY MARYLAND
 Director: George F. Nunn 3-19-79 Date
 Chief, Bureau of Engineering: W. O. Lohr 3-16-79 Date

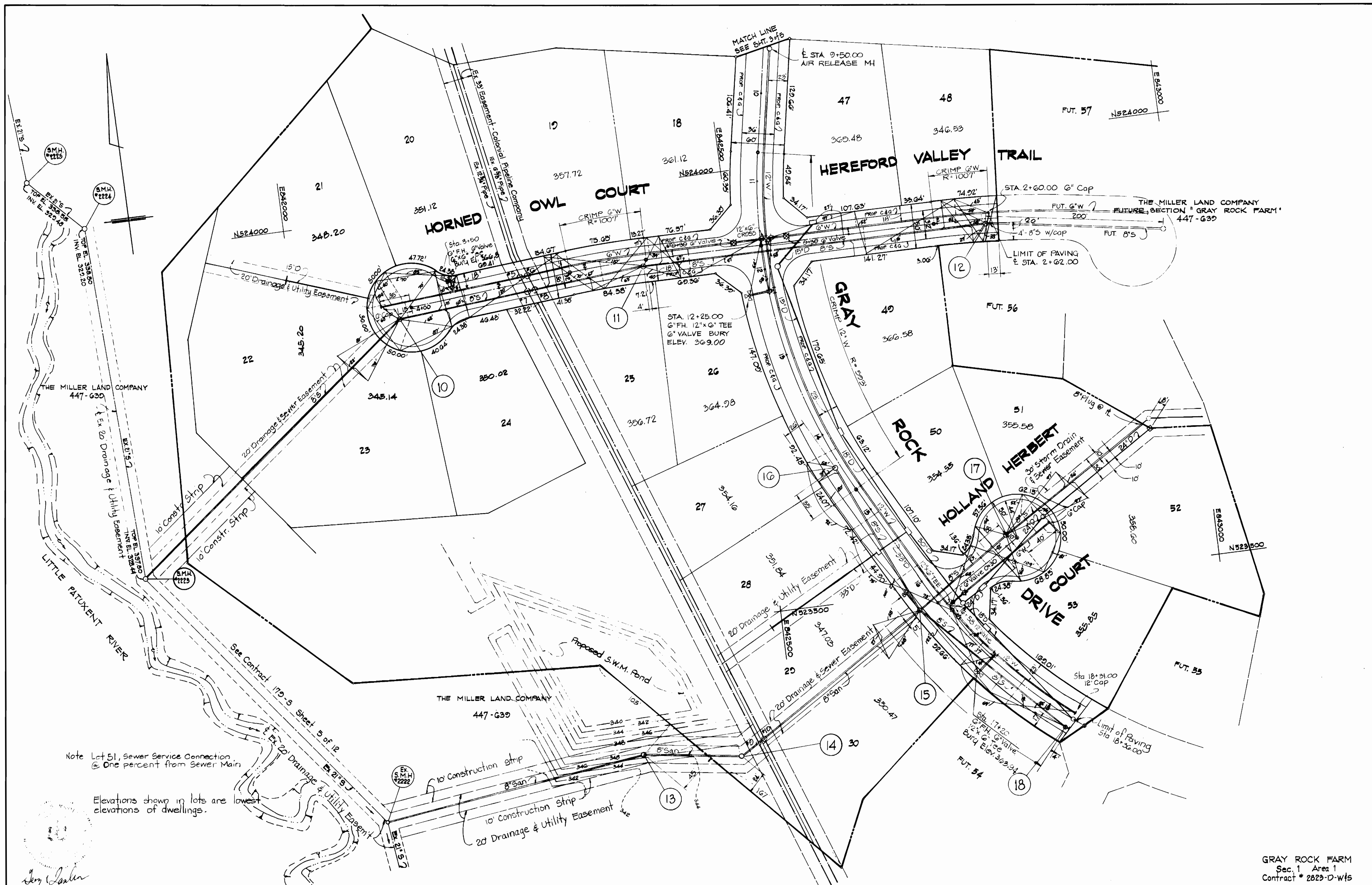
CONTRACT NO. 2023-D-W45

**GRAY ROCK DRIVE
 MAC CUBIN VALLEY TRAIL
 ANGUS VALLEY TRAIL**

GRAY ROCK FARM
 SECTION 1 AREA 1
 ELECTION DISTRICT NUMBER 2

| | |
|----------------------------------|---------------------|
| DRAWING NO. <u>5</u> OF <u>5</u> | SCALE <u>1"=50'</u> |
|----------------------------------|---------------------|

Designed By: JDC - Drawn By: K.B.H. - Checked By: T.J.R.II



KIDDE CONSULTANTS, INC.
 ENGINEERS • ARCHITECTS • PLANNERS
 BALTIMORE, MARYLAND

DEPARTMENT OF PUBLIC WORKS
 HOWARD COUNTY MARYLAND
 Director: *W. F. N...* Date: 3-19-79
 Chief, Bureau of Engineering: *W. F. N...* Date: 3-16-79

CONTRACT NO. 8823-D-W/5

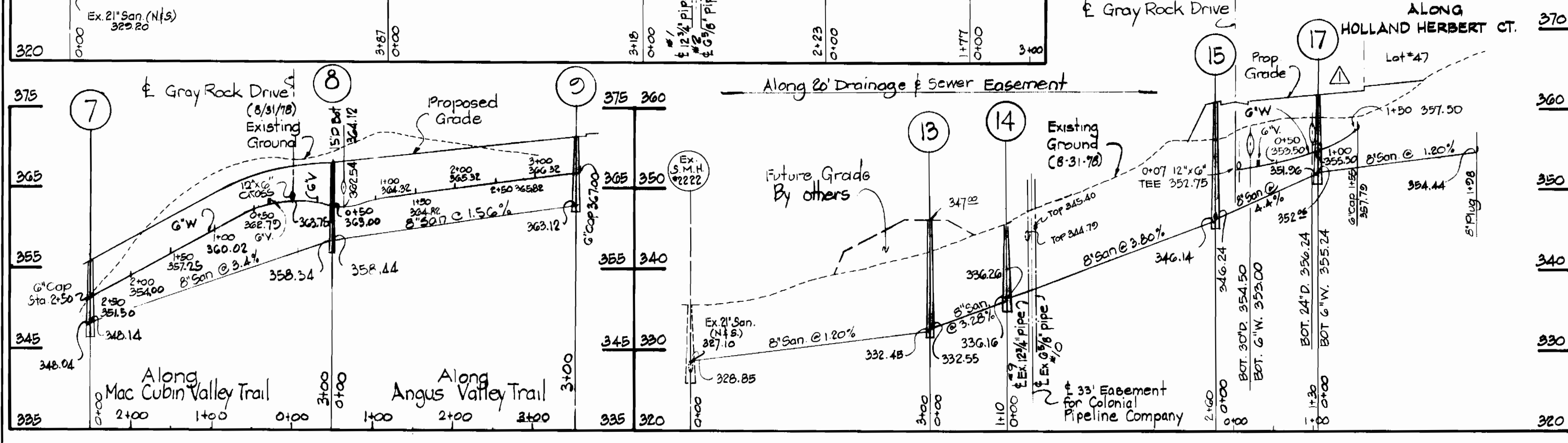
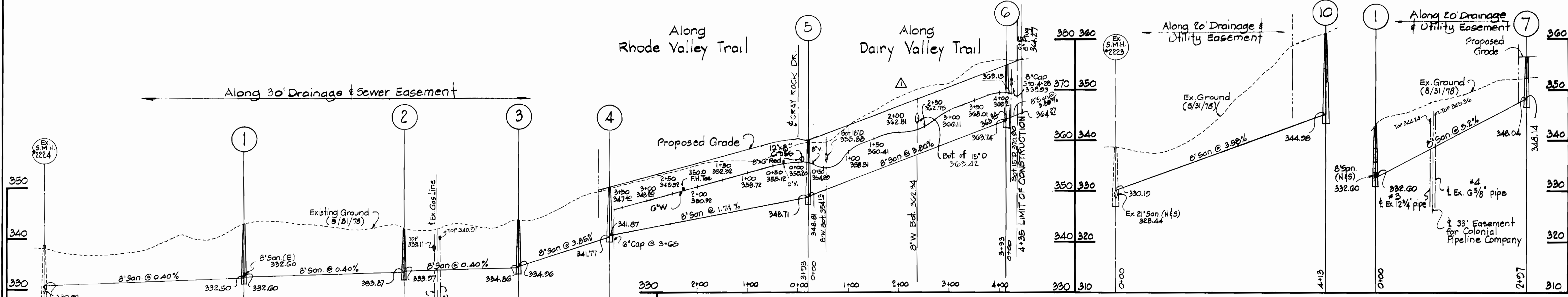
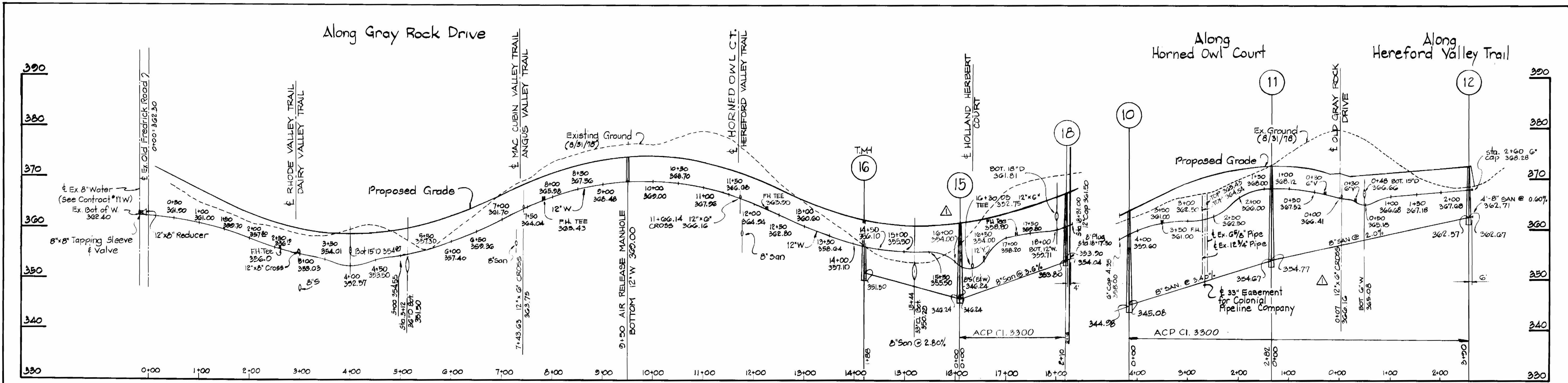
**GRAY ROCK DRIVE
 HEREFORD VALLEY TRAIL
 MUSSELMAN COURT**

GRAY ROCK FARM
 SECTION 1 AREA 1
 ELECTION DISTRICT NUMBER 2

DRAWING NO. 4 OF 5
 SCALE 1"=50'

Designed by J.D.C. - Drawn by: K.B.H. - Checked by: T.J.R.III

AS-BUILT JAN 17, 1980



Handwritten signature

| | |
|--------|---|
| 4-4-79 | Water along Holland Herbert, Dairy Valley & Old Gray Rock |
| No. | DATE |
| | REVISION |

GRAY ROCK FARM
Sec. 1 Area 1
Contract # 2823-D-Wfs

KIDDE CONSULTANTS, INC.
ENGINEERS • ARCHITECTS • PLANNERS
BALTIMORE, MARYLAND

DEPARTMENT OF PUBLIC WORKS
HOWARD COUNTY, MARYLAND
F. N. Nutter 3-19-79
Director Date
W. O. Albert 3-16-79
Chief, Bureau of Engineering Date

CONTRACT NO. 2823-D-Wfs

PROFILES OF SEWER-WATER MAINS

GRAY ROCK FARM
SECTION 1 AREA 1
ELECTION DISTRICT NUMBER 2

DRAWING NO. 5 OF 5
SCALE
Horz: 1"=100'
Vert: 1"=10'

Designed By: J.D.C. - Drawn By: K.B.H. - Checked By: T.J.R.II