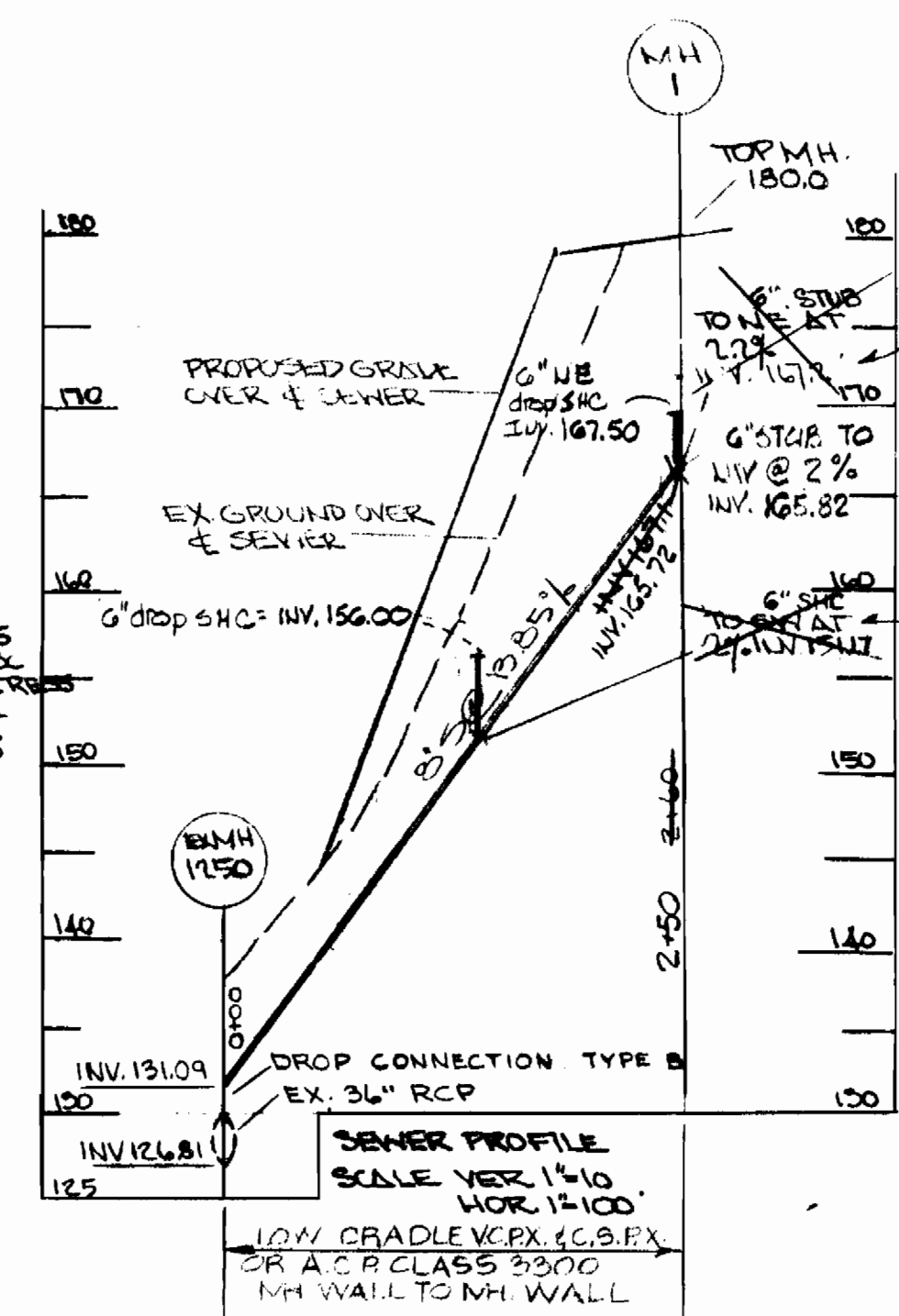
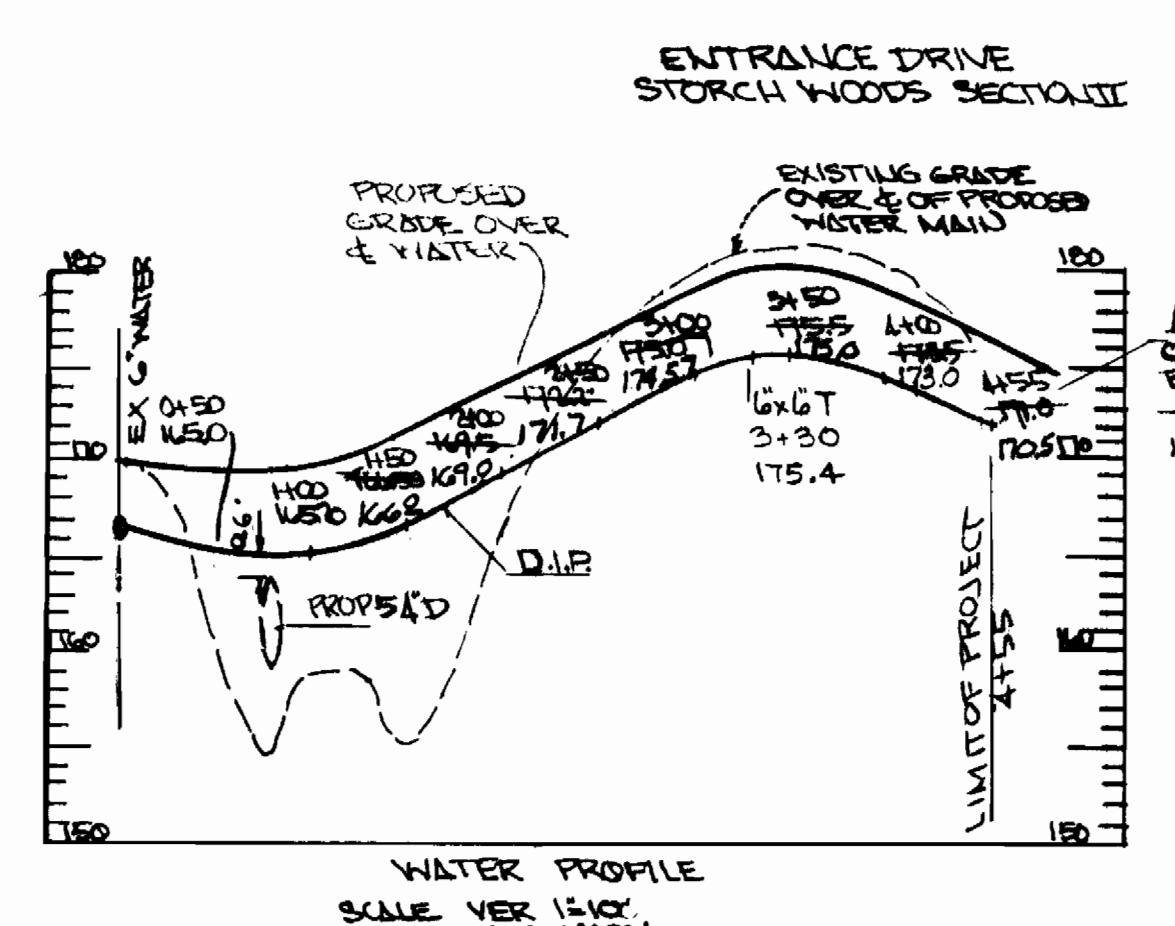


WATER & SEWER CODE
 COUNTY USE
 WATER NO: CO1
 SEWER NO:
 VICINITY SKETCH
 SCALE 1/4"=60'

- GENERAL NOTES.
- APPROXIMATE LOCATION OF EXISTING MAINS ARE SHOWN. THE CONTRACTOR SHALL TAKE ALL NECESSARY PRECAUTIONS TO PROTECT EXISTING MAINS AND SERVICES AND MAINTAIN UNINTERRUPTED SUPPLY. ANY DAMAGE INCURRED SHALL BE REPAIRED IMMEDIATELY.
 - ALL HORIZONTAL CONTROLS ARE BASED ON MARYLAND STATE COORDINATES.
 - ALL VERTICAL CONTROLS ARE BASED ON U.S.G.S. DATUM.
 - ALL PIPE ELEVATIONS SHOWN ARE INVERT ELEVATIONS.
 - CLEAR ALL UTILITIES BY A MINIMUM OF 6'. CLEAR ALL POLES 2'-0" MINIMUM OR TUNNEL AS REQUIRED.
 - FOR ALL STANDARD DETAILS SEE STANDARDS BOUND IN SPECIFICATIONS.
 - CONTRACTOR SHALL LOCATE EXISTING UTILITIES IN ADVANCE OF CONSTRUCTION OPERATIONS IN THE VICINITY OF PROPOSED UTILITIES.
 - CONTRACTOR SHALL NOTIFY THE FOLLOWING UTILITIES OR AGENCIES AT LEAST FIVE (5) DAYS BEFORE STARTING WORK SHOWN ON THESE PLANS.
 STATE HIGHWAY ADMINISTRATION - 551-5533
 BALTIMORE GAS & ELECTRIC COMPANY - UNDERGROUND ELECTRIC DISTRIBUTION ENGINEERING - DAMAGE CONTROL - 234-5491
 BALTIMORE GAS & ELECTRIC COMPANY - UNDERGROUND GAS DISTRIBUTION ENGINEERING - 559-0100
 CHESAPEAKE & POTOMAC TELEPHONE COMPANY - 725-7916
 AMERICAN TELEPHONE & TELEGRAPH - CABLE LOCATION DIVISION - 501-593-3555
 COLOMBIA PIPELINE COMPANY - 781-4641
 - TREES ARE TO BE PROTECTED FROM DAMAGE TO MAXIMUM EXTENT. TREES LOCATED WITHIN THE CONSTRUCTION STRIP ARE NOT TO BE REMOVED OR DAMAGED BY THE CONTRACTOR.
 - CONTRACTOR SHALL REMOVE TREES, STUMPS AND ROOTS ALONG LINE OF EXCAVATION AS DIRECTED BY THE ENGINEER. PAYMENT FOR SUCH REMOVAL SHALL BE INCLUDED IN THE UNIT PRICE BID FOR EXCAVATION AND BACKFILL FOR WATER AND SEWER MAINS.
 - PLACE REGULATORY "MEN WORKING" AND WARNING SIGNS AS REQUIRED TO COMPLY WITH MARYLAND STATE HIGHWAY ADMINISTRATION MANUAL OF TRAFFIC CONTROL FOR HIGHWAY CONSTRUCTION AND MAINTENANCE OPERATIONS.
 - ALL WATER MAINS TO BE C.I.P., D.I.P. OR A.C.P. UNLESS OTHERWISE NOTED.
 - TOP OF ALL WATER MAINS TO HAVE A MINIMUM OF 3/4" COVER UNLESS OTHERWISE NOTED.
 - ALL VALVES SHALL BE STRAPPED TO TEES IN ACCORDANCE WITH STANDARD DETAILS.
 - BLOCK ALL FITTINGS WITH CONCRETE, SEE STANDARD BOUND IN SPECIFICATIONS.
 - BURY LINE ELEVATIONS ON FIRE HYDRANTS SHALL BE SET TO THE ELEVATIONS SHOWN ON THE DRAWINGS. ALL FIRE HYDRANTS SHALL BE STRAPPED AND BUTTRESSED WITH CONCRETE IN ACCORDANCE WITH STANDARD DETAILS. SOIL AROUND THE FIRE HYDRANT TO BE COMPACTED IN ACCORDANCE WITH SECTION 5-15 OF THE STANDARD SPECIFICATIONS.
 - ALL WATER HOUSE CONNECTIONS SHALL BE METER SETTLING FOR INSIDE.
 - ALL SEWER MAINS SHALL BE C.S.P.X., V.C.P.X. OR A.C.P. CLASS 2400 UNLESS OTHERWISE NOTED.
 - THE CONTRACTOR SHALL PROVIDE A JOINT IN ALL SEWER MAINS WITHIN 2'-0" OF EXTERIOR MANHOLE WALL.
 - ALL MANHOLES SHALL BE 1'-0" INSIDE DIAMETER UNLESS OTHERWISE NOTED.



M.H. TYPE	INVERT	TOP	DEPTH
STD-B	167.50	167.50	3'-5"
	165.82	165.72	

	AS-BUILT
2" WATER	30
6" WATER	465
FIRE HYDRANT	1
8" SEWER	260
SEWER MANHOLE	1-12.9 VF



1	8-20-79	REVISED SHC AND WATER LINE ELEV.
10	DATE	REVISION

TYDINGS-OHEIM ASSOC. INC.
 JACK S. FEICK ENGINEER
 8370 COURT AVE. ELLICOTT CITY, MD
 410-0660

DEPARTMENT OF PUBLIC WORKS
 HOWARD COUNTY, MARYLAND
 Richard E. Brudenberg 10/16/78
 DIRECTOR OF PUBLIC WORKS DATE CHIEF BUREAU OF ENGINEERING DATE

CONTRACT NO. B14-D-W&S

PLAN & PROFILE OF
 WATER & SEWER MAINS

STORCH WOODS SECTION II
 ELECTION DISTRICT SAVAGE NO 6

DRAWING NO. 1 OF 1 SCALE 1"=50'